



FAMILY AF-AYR *DISTINCTION* EX91

138AY5602 Reg #: 100578700



SOURCE: DAIRYBULLS.COM
August 2022

Linear Traits:

Trait	Profile	Score
Stature		2.70
Strength		0.10
Body Depth		-0.90
Dairy Form		-0.40
Rump Angle		-0.80
Thurl Width		0.90
R. Legs Side View		-0.10
Foot Angle		1.30
F. Udder Att.		2.50
R. Udder Ht.		2.10
R. Udder Width		0.60
Udder Cleft		1.40
Udder Depth		3.50
F. Teat Place.		0.70
Teat Length		-0.60
ABA, 08/2022	-2 -1 0 +1 +2	

Type Information, ABA, 08/2022 :

PTI	419.97	PTAT	1
Reliability	Daughters	Herds	
90%	119	54	

Production Traits [CDCB 08/2022]: G

% Rel.	Milk Lbs.	% Fat	Fat Lbs.	% Prot.	Prot. Lbs.	NMS	FMS	CMS	GMS	Total Dtrs	Total Hrds	% US Dtrs	Gen. Base
91	-85	-0.06	-15	-0.01	-4	-12	-3	-14	-69.0	186	84	40	USA-1.08/2022

FAMILY AF-AYR *DISTINCTION* EX-91

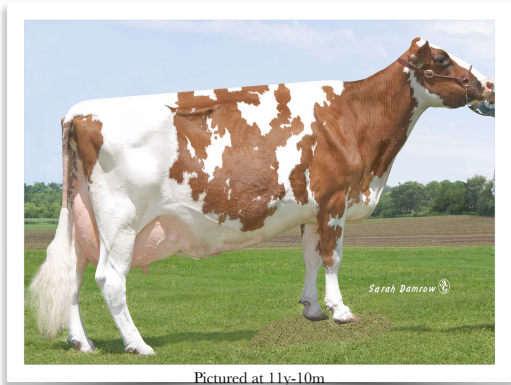
Sire: *Mapleburn Remington*

Dam: Family Af-Ayr Cornelius **DAISY EX-94 5E**
 Lifetime to Date: 222,570 9,262F 4.2% 7,295P 3.3%
 2007 Grand Champion Central National Show
 2007 All-American 2003 & Unanimous All-American
 Res. All-American 2002 & 2004, Nominated All-American 2009



Dam: Family Af-Ayr Cornelius Daisy EX-94 5E

2nd Dam: *Family Af-Ayr DK DESIREE EX 95-4E*
 13-03 365d 27,700 1,122F 4.1% 794P 2.9%
 Lifetime to Date: 183,150 6,990F 3.8% 5,614P 3.1%
 2001 1st 4-Year-Old Central National Jr. Show
 2002 All-American 5-Year-Old & Jr. All-American 5-Year-Old
 2002 Reserve Grand Champion Central National Show
 2002 Grand Champion Central National Jr. Show
 2004 Nominated All-American & Jr. All American Aged Cow



Pictured at 11y-10m

2nd Dam: Family Af-Ayr DK Desiree EX-95 4E

**SEMEN ONLY AVAILABLE FROM
FAMILY AF-AYR FARM**