



# RIYADH DYNAMICS

Autonomous Robotics Solutions



# About Riyadh Dynamics

**Riyadh Dynamics is the first automation robot's manufacturer in the MENA region, based in Riyadh.**

Founded in 2018, Riyadh Dynamics is steadily moving towards a pivotal role in shaping industrial landscapes through its commitment to pioneering advancements in automation technology.

As businesses begin to recognize the potential of the fourth industrial revolution (4IR), Riyadh Dynamics is poised to become a key player in driving this transformation. With a trajectory aimed at delivering unparalleled solutions that redefine the standards of operational excellence on a global scale, Riyadh Dynamics is set to lead the way in the evolving landscape of automation and industrial innovation.





# Our Vision and Mission

## Our Vision

To be the innovator and leading provider of autonomous robotic solutions.

## Our Mission

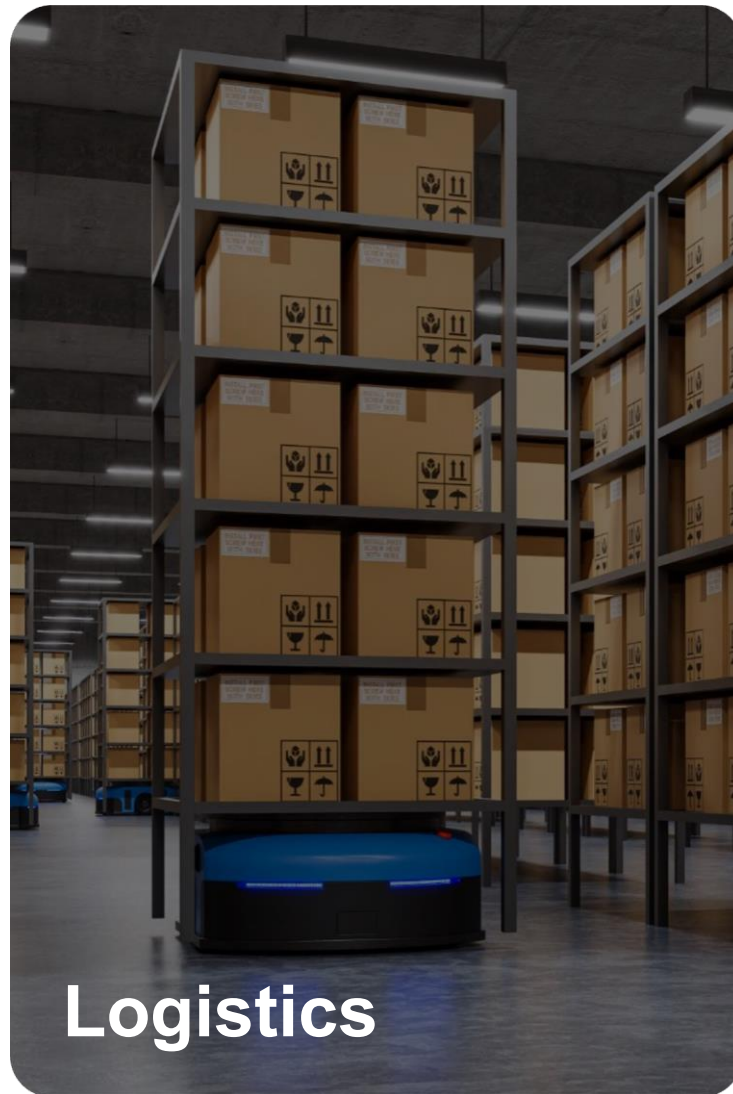
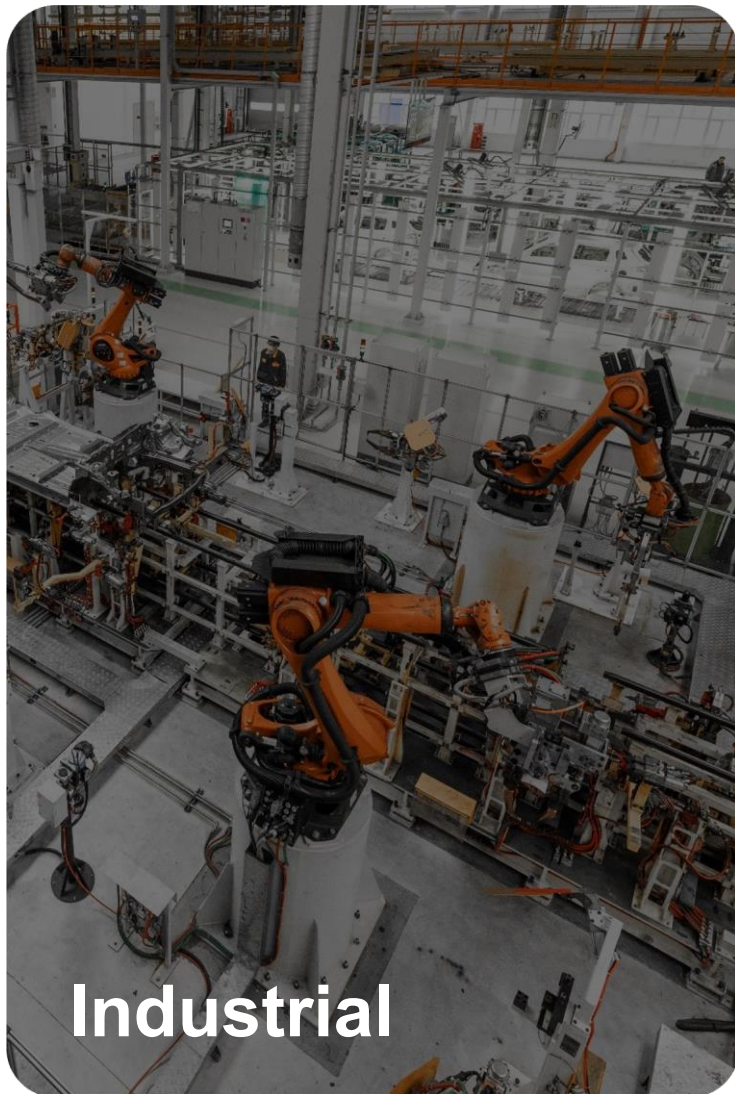
To optimize commercial operations for enhanced efficiency and productivity.



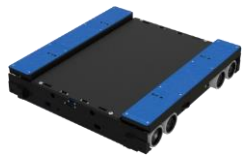




# Divisions



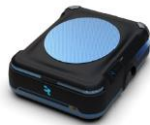
# Our Robotic Solutions



Shuttle



Pallet Mover



Shelf Mover



Mobile Shuttle



Sorter



Pick Assist



Robotic Arm



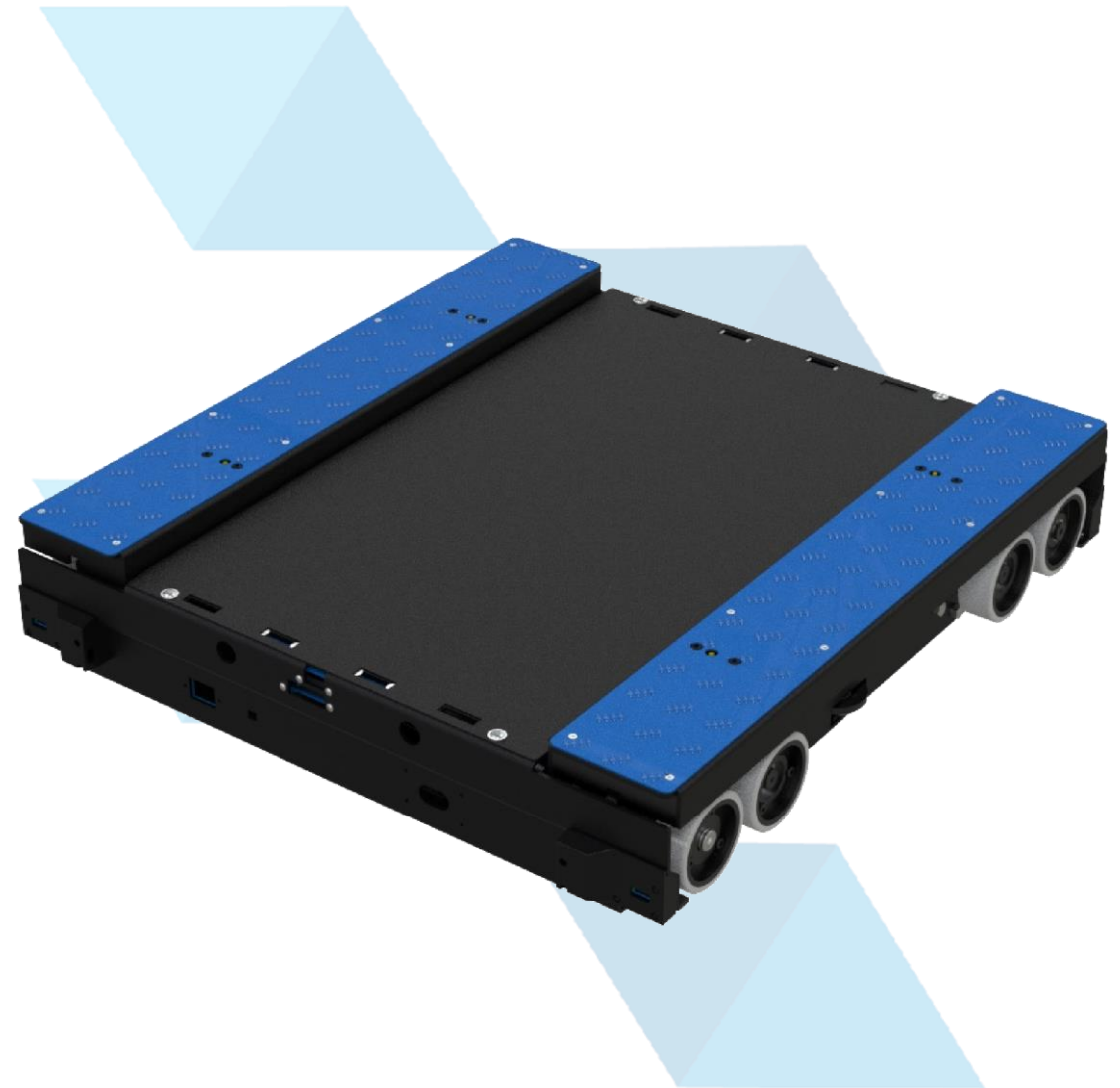
Forklift



# Pallet Shuttle

Shuttle robots play a critical role in modernizing warehouse operations, enhancing efficiency, and meeting the demands of increasingly complex supply chains.

Their ability to automate routine tasks frees up human workers to focus on more value-added activities, making them a valuable asset in the logistics and distribution industry.



## Specifications

Dimensions	1000 x 950 x 200
Max. Load	1000-1200 kg
Max. Speed	0.8 m/s
Battery life	Over 8 hours
Full Charging time	5.5 h



# Pallet Mover

Pallet Mover robot excels in efficiently transporting palletized goods within warehouses. With autonomous navigation and advanced sensors, it navigates aisles, picks up, and delivers pallets with precision.

Integrated seamlessly with warehouse management systems, it enhances productivity by automating tasks and optimizing space utilization, ensuring reliable and safe operations in modern logistics environments.

Specifications	
Dimensions	1400 x 900 x 400 mm
Max. Load	1200 Kg
Max. Speed	1.5 m/s
Battery life	10 h
Full Charging time	1.5 h



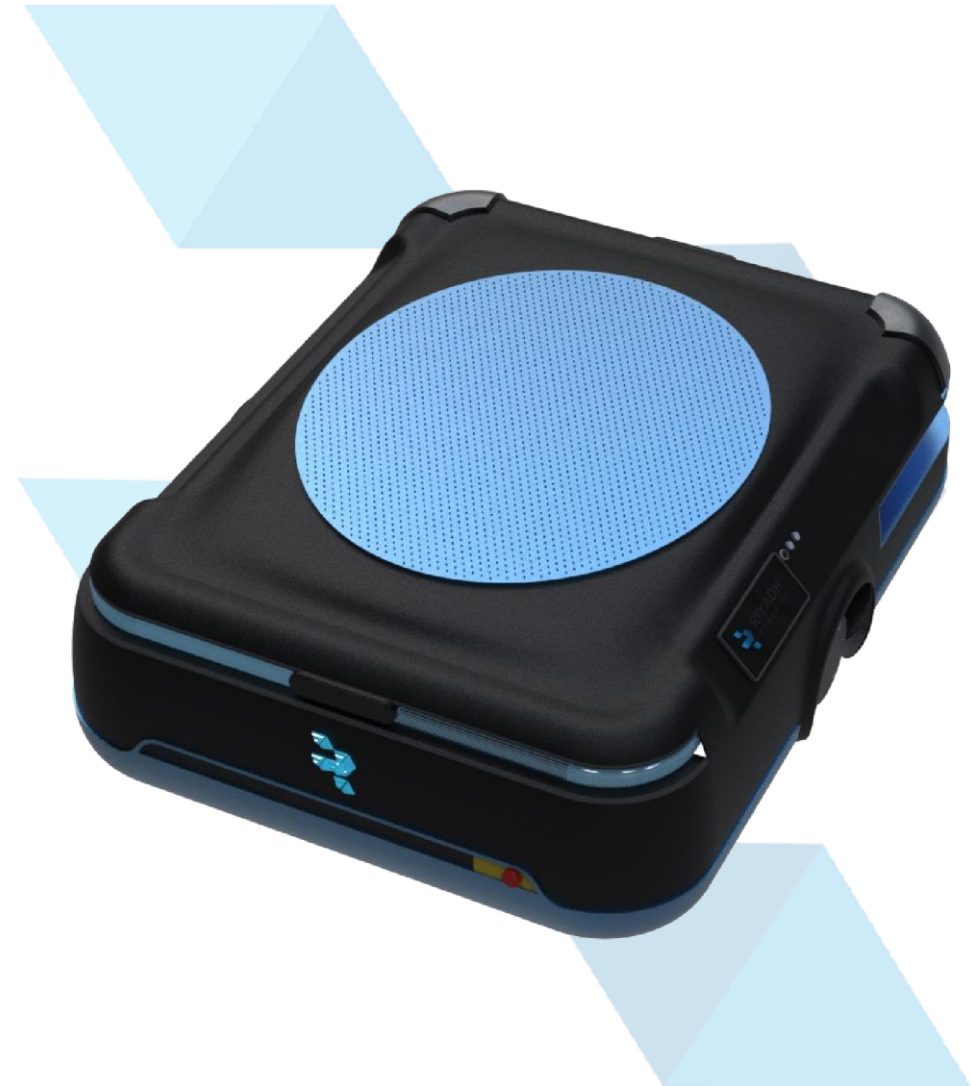




# Shelf Mover

Shelf Mover Robot is an advanced autonomous mobile robot (AMR) engineered to streamline warehouse operations. Designed specifically for ecommerce fulfillment, it excels in efficiently picking up shelves and navigating through warehouse environments.

This capability ensures swift and precise movement of goods, optimizing the fulfillment process and enhancing overall operational efficiency.



## Specifications

Dimensions	1160 x 860 x 245 mm
Max. Load	1500 Kg
Max. Speed	1.5 m/s
Full Charging Time	6 h
Lift Height	2700 mm





# Mobile Shuttle

A cutting-edge solution for streamlined warehouse operations. This autonomous marvel navigates seamlessly, handling tasks from material transport to precise lifting with unmatched efficiency.

Equipped with state-of-the-art sensors and intelligent software, it ensures optimal performance while reducing labor costs and maximizing productivity.

Specifications	
Dimensions	2350 x 988 x 2000 mm
Max. Load	1500 Kg
Max. Speed	1.5 m/s
Full Charging Time	6 h
Lift Height	2700 mm





# Sorter

Sorter robot represents a breakthrough in automated sorting solutions for warehouses and distribution centers. Built for speed and efficiency, our robot processes incoming goods with remarkable precision, categorizing items based on predetermined criteria such as size, weight, or destination.

Equipped with advanced sensors and intelligent routing algorithms, it optimizes throughput and minimizes sorting errors, ensuring rapid and accurate order fulfillment.



## Specifications

Dimensions	2350 x 988 x 2000 mm
Max. Load	1500 Kg
Max. Speed	1.5 m/s
Full Charging Time	6 h
Lift Height	2700 mm



# Pick Assist

Designed to enhance productivity and streamline workflows, our Pick Assist robot integrates seamlessly with existing warehouse management systems, prioritizing tasks and updating inventory in sync with operational demands.

Its robust construction and safety features ensure reliable performance while adhering to the highest industry standards.



Specifications	
Dimensions	2350 x 988 x 2000 mm
Max. Load	1500 Kg
Max. Speed	1.5 m/s
Full Charging Time	6 h
Lift Height	2700 mm

# Forklift

A cutting -edge solution for streamlined warehouse operations. This autonomous marvel navigates seamlessly, handling tasks from material transport to precise lifting with unmatched efficiency.

Equipped with state -of-the-art sensors and intelligent software, it ensures optimal performance while reducing labor costs and maximizing productivity.

Specifications	
Dimensions	2350 x 988 x 2000 mm
Max. Load	1500 Kg
Max. Speed	1.5 m/s
Full Charging Time	6 h
Lift Height	2700 mm







# Robotic Arm

Equipped with intelligent sensors and a user-friendly interface, our systems ensure optimal extraction parameters for a perfect espresso or specialty coffee every time.

Whether in cafes, restaurants, or hospitality settings, our robotic arms redefine the coffee-making experience, combining innovation with reliability to elevate customer satisfaction and operational excellence.



## Specifications

Weight	14 kg
Payload	5 Kg
Max. Speed	2 m/s
Reach	850 mm
Instillation Orientatoin	Any Angle



# Robotic Arm Solution



# Riyadh Dynamics Robotic Arm

Equipped with intelligent sensors and a user-friendly interface, our systems ensure optimal extraction parameters for a perfect espresso or specialty coffee every time.

Whether in cafes, restaurants, or hospitality settings, our robotic arms redefine the coffee-making experience, combining innovation with reliability to elevate customer satisfaction and operational excellence.

## HoReCa Applications:



Tea



Coffee



Mohito



V60



Fries



Cupcake



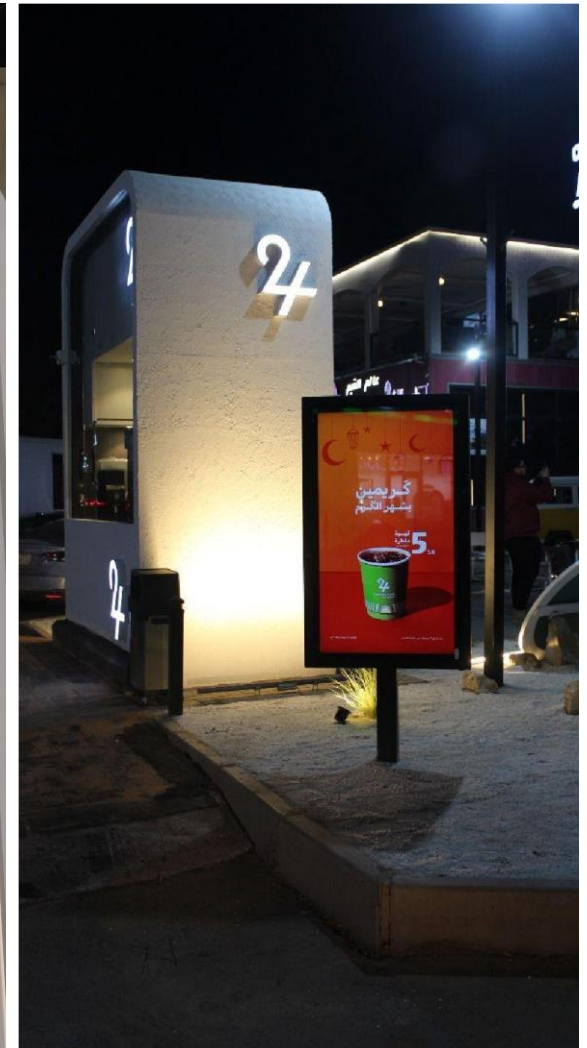
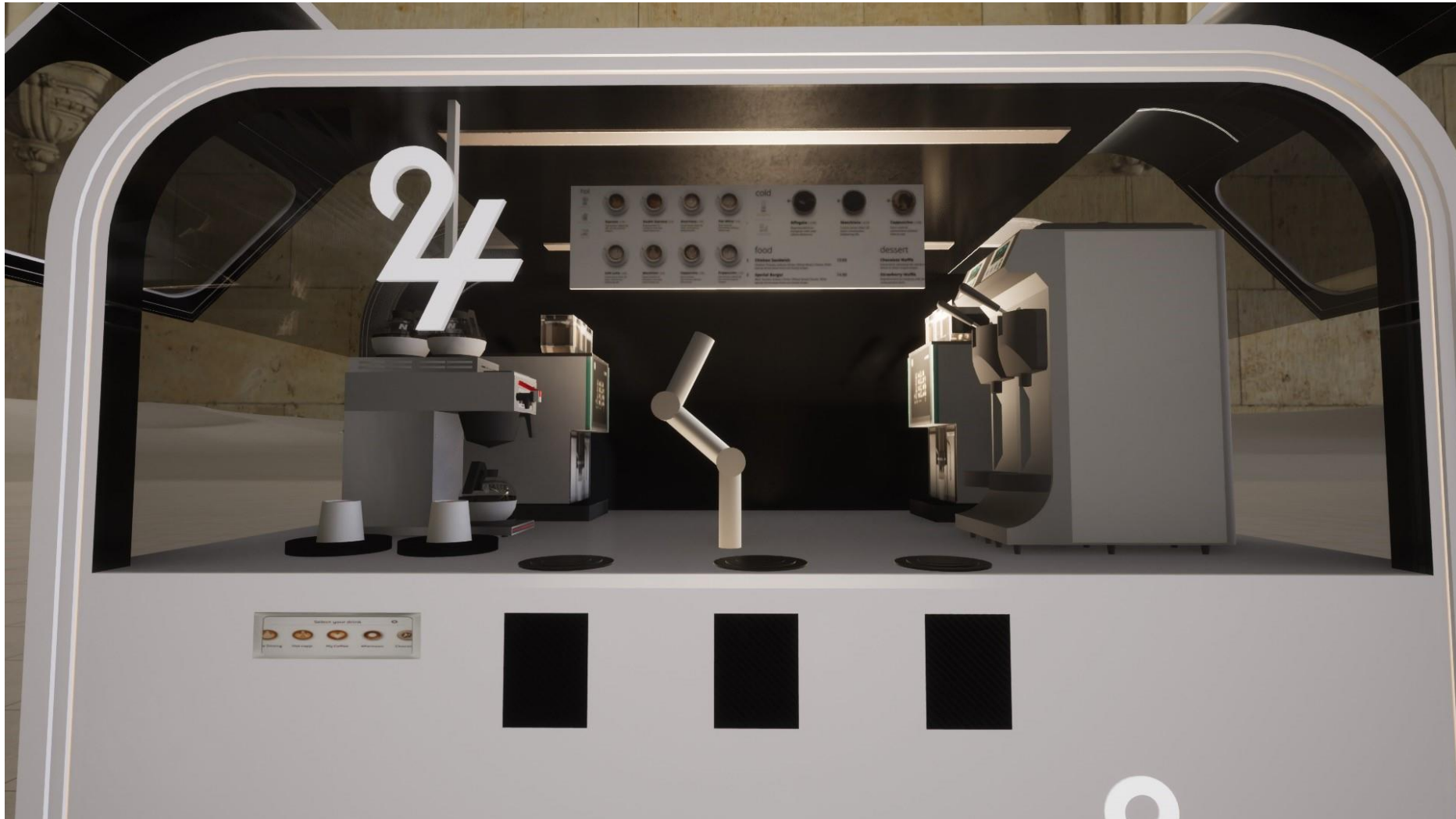
Crepe



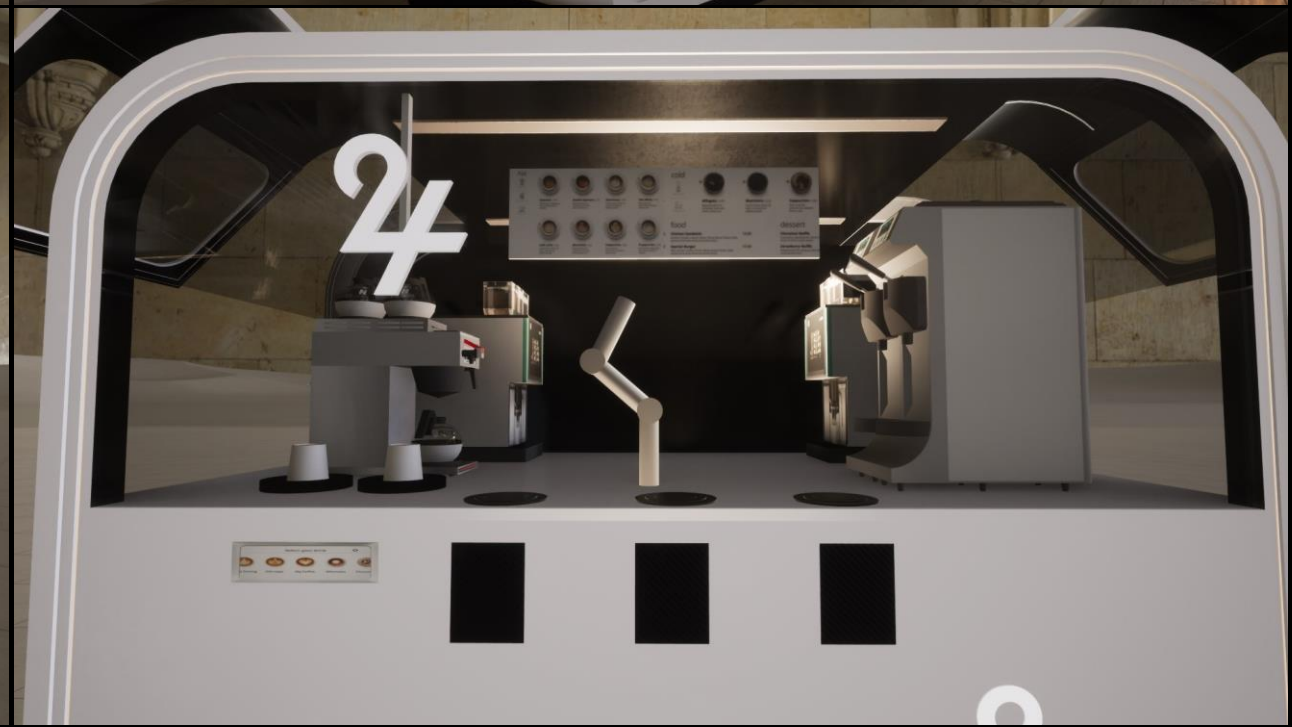
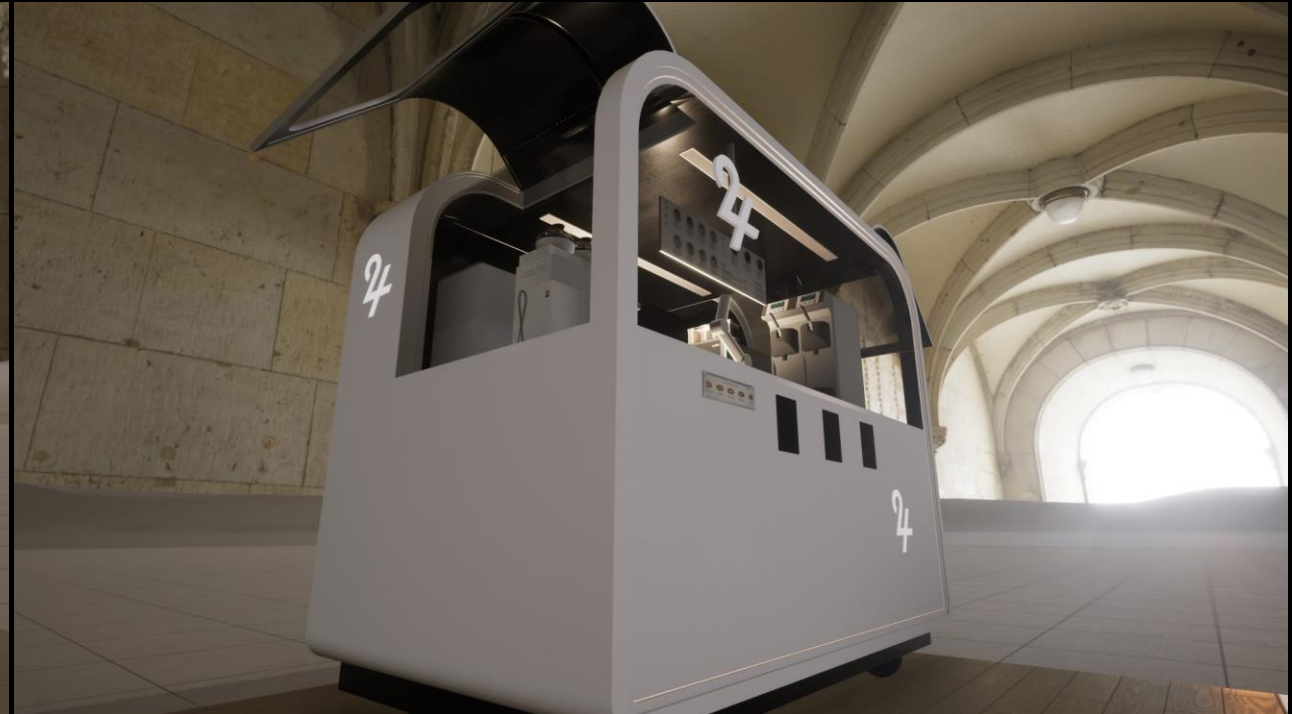
Ice Cream



# 24 Coffee











# Robotic Arm USPs

## 24/7 Performance

Utilize the robotic barista to boost your business round the clock. Capture opportunities in perpetual motion settings like airports, rail stations, and hospitals effortlessly.

## No HR Concerns

While the average barista typically works for 6-12 months, the robotic barista operates continuously without fatigue or illness.

## High Efficiency

The robotic barista makes over 400 cups of specialty beverages within a day, ensuring your customers always enjoy their preferred beverage.

## Fully Automated

The beverage robotic operates entirely autonomously without the need for the manpower to intervene.

## Unique Product

Unlike typical coffee solutions, our robotic arm stands out as a distinctive product designed to deliver specialty beverages using traditional methods.

## Compact Solution

Unlike traditional coffee making, the robotic arm occupies minimal space, making it ideal for hightraffic locations.



# Automation Workflow



## 1 Assessment and Goal Setting

- Identify tasks suitable for automation.
- Define goals: productivity, cost reduction, safety improvements.

## 2 Research and Planning

- Evaluate robotic solutions aligned with needs.
- Develop implementation plan: timelines, budget, resources.

## 3 Design and Integration

- Customize robots to fit workflow requirements.
- Integrate with existing systems (WMS, conveyors).

## 4 Testing and Validation

- Ensure robots meet performance criteria.
- Validate against operational metrics.

## 5 Training and Deployment

- Train partner's staff on robot operation and maintenance.
- Gradual deployment to minimize disruption.





## Success Partners



## Clients





**RIYADH**  
DYNAMICS

# Be Part of the Fourth Industrial Revolution.

Dr. Meshari Alanazi  
CEO  
meshari@riyadhdynamics.com  
+966 56 166 5426

Riyadh Dynamics  
Al Olaya District, Riyadh  
RiyadhDynamics.com