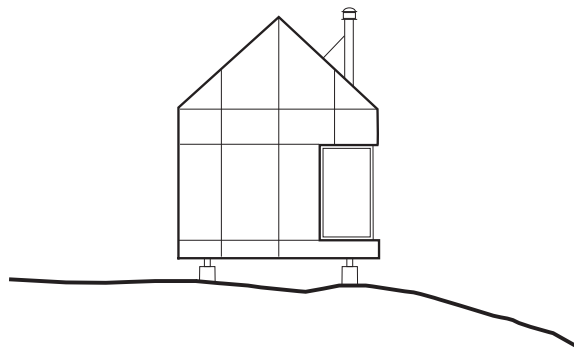


20
24

Re-
claim
Nat-
ure



go-cabn.com

-
- i. introduction
 - ii. design philosophy
 - iii. craftsmanship
 - iv. design overview
 - v. specifications
 - vi. configuration
 - vii. our process
 - viii. ordering
 - ix. your questions

i.

Where wilderness meets luxury

Welcome to CABN: A pre-designed, high-end solution for wilderness dwelling. Each signature unit offers a unique, curated approach to prefabricated construction -one that emphasizes architectural quality and craft while fostering engagement with the outdoors.

Our high-quality architectural cabins are designed to offer an immersive, nature-centric experience without the excess and burden of traditional vacation homes. We cater to discerning clients who value simplicity, elegance, and a profound connection to the environment.

We are currently seeking adventurous, land-owning early adopters and investors to join us in experiencing nature unlike before. Each of our bespoke CABNs is made-to-order in collaboration with our modular partners and comes complete with everything you need to thrive in nature.

“Mini-
mal
Im-
pact.”

Maxi-
mum
Enjoy-
ment.”

ii.

A design philosophy committed to land stewardship

Our philosophy is rooted in the principles of minimal impact and maximum enjoyment.

Each cabin is thoughtfully crafted to blend seamlessly with its surroundings, using sustainable materials and innovative design techniques. We prioritize efficient construction processes to minimize disruption to the landscape and ensure that our cabins are both cost-effective and quick to build.

We understand that true luxury is about more than opulence; it's about creating meaningful, memorable experiences in nature. Our cabins provide a sanctuary where you can unwind, recharge, and reconnect with the world around you, all while knowing you are being a responsible steward of the land.



Sus-
tain-
abil-
ity in
beauty.

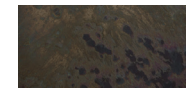


iii.

An exercise in craftsmanship

Nothing is more sustainable than beauty. Our focus on craftsmanship and quality is a marriage of timeless design, carefully curated utility and a robust material selection. Our commitment to meticulous detail ensures that every element, from the carefully selected materials to the precision-engineered construction, harmonizes with the natural environment.

Modular construction is often synonymous with poor design and a questionable aesthetic. Corners are cut, literally, to achieve function and cost-savings at the expense of longevity, durability and beauty. True craft is understanding. Each of our cabins is clad in robust weathered corten steel siding and finished inside with high-grade UV plywood. Our design palette also includes blackened steel-faced millwork and accents, hardy hemlock natural wood soffits and corrugated metal.





iv.

Unparalleled design

- Over thirty-two linear feet of wood-framed glazing.
- A robust, galley-style kitchen flanked by sixteen feet of floor-to-ceiling glazing, with patio door operability to easily configure the space for indoor-outdoor cooking and hosting.
- Wood-burning or bioethanol fireplace in the primary sleeping quarters.
- Induction range, fridge/freezer, and combination microwave-oven.
- Additional loft-style sleeping space ideal for guests or children located above the entry foyer.
- Integrated millwork-desk space for remote work.
- Separate indoor and outdoor shower space.
- Dual-zone ductless mini-split conditioning system.
- Indoor and outdoor shower with privacy screen.
- Integrated Sonos audio system.
- Integrated rolling-shades for all floor-to-ceiling glazing.

v.

Curated specificity

- Bedroom 1 + 1 (loft) - 12' 0" x 10' 0" with freestanding bioethanol or wood burning fireplace: floor mounted on steel finish plate
- 4' 0" x 8' 0" Water Closet Faucet - Dornbracht TARA (Chrome/Matte Black/ Brushed Dark Platinum) with custom-built brushed steel and wood vanity; Toto Dual Flush Wall Hung toilet (1.2 & 0.8 GPF).
- Shower 4' 0" x 8' 0" (indoor); brushed steel shower finish with Dornbracht showerhead and mounted wand.
- Shower - 4' 0" x 8' 0" (outdoor); Outdoor Shower Company Pull-chain self-closing outdoor shower in chrome plated brass valves and stainless steel body, chain & rain (outdoor rated).
- Galley Kitchen 10' 0" - SMEG Steel Fridge/freezer (Brushed Stainless - 10.0 cu. ft.); SMEG Induction Cooktop; SMEG combination microwave/oven (Brushed Stainless).
- Bocci 22 System outlets and LED lighting throughout.
- Jeld-wen Siteline Aluminium-clad pine wood windows and doors with Low E Tempered glass.



SONOS

ZIPsystem™
SHEATHING & TAPE

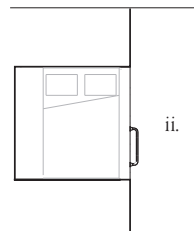
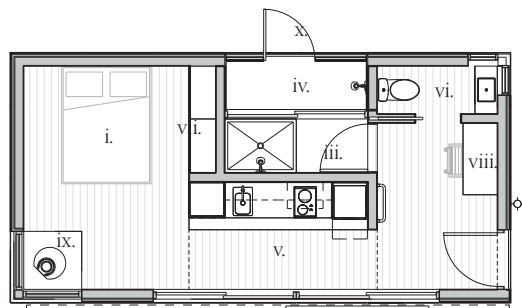


TOTO®



vi.

Configuration



i. primary
vi. water closet

ii. sleeping loft
vii. storage

iii. shower
viii. workspace

iv. outdoor shower
ix. fireplace

v. kitchen
x. privacy screen





vii.

Our process

- Contact us with your site location .
- Sign our preconstruction agreement (PCA) form and submit your order deposit.
- We work with you and your local contractor to prepare the foundation and land to receive your CABN. We are happy to consult on any additional porches, structures, roadways, paths or vision you have for your landscape.
- We will send you updates from our factory partner .
- Throughout the process, our payment scheme breakdown is as follows: 1 - preconstruction deposit (40%); 2 -rough-in (20%); 3 - substantial completion (20%).
- Close to substantial completion, our shipping invoice will be sent along separately. We include a shipping estimate in our preconstruction agreement.
- Your unit will ship and be installed with a rough 6-8 month lead time from contract signing.



viii.

Be the first to experience nature -redefined

- At this time we are offering preorders of our signature CABN unit in partnership with some of the most sophisticated and experienced builders in America. We are actively seeking adventurous, early adopters with serviced land interested in purchasing our unit.
- Pricing starts at \$570,000.00 USD.
- Please note that our pricing does not include foundation or site work, or any necessary site modifications.
- Shipping costs vary depending upon site location and access: a shipping estimate will be provided.
- All units will be made-to-order: as our capacity is limited at launch, we are giving multi-unit orders a preference in production.
- We do not have the capacity to serve dense urban areas or HOAs.

Your questions

How many units do you have available for sale?

At this time our units are built-to-order in collaboration with one of our factory partners.

Are you able to facilitate large, multi-unit orders?

Yes. Contact us with your order size and site location to obtain a quote and production time frame.

Can I see your factory or walk through a unit?

As we are a newly launching company, we are only offering our units built-to-order for early adopters. Each unit is custom-fabricated for each of our clients. Check-in later or contact us at info@go-cabn.com.

Can I customize my finishes?

Absolutely. We are happy to customize the finish-out of our units for our early adopters.



Your questions - cont'd.

Are all CABNs off-grid?

No. We offer off-grid options as a cost-add depending upon your location and needs. We have specifications and strategies for off-grid versions, including RV-style connections and the possibility of a mobile foundation. Contact us for more information.

Do you offer financing?

We do not offer in-house financing at this time. Depending upon your location we have partners which can facilitate financing options.

Why do I need a builder?

Our prefabricated units require a site contractor to prepare the foundation to the necessary specification and assist in receiving and installing the unit.

Do you sell plans?

No, we do not sell drawing packages for our units.

How long will it take to receive my CABN?

This will vary depending upon your location and order size; generally, we estimate a 6 - 8 month lead time from contract signing.

What is the interior finish?

Our interiors are UV treated plywood with CNC routed electrical and lighting connections. Our goal at CABN is to make the highest-quality and most sustainable/healthy product, so we have eliminated the use of gypsum board and paint.

Can CABN units be customized?

Depending upon the scope of the changes, yes. Contact us at info@go-cabn.com for more information.



go-cabn.com