



ATOM
Acquisition and Total Optimisation Management

Data Acquisition, Billing and Optimisation Management Tool

Overview

Innotech® ATOM is a comprehensive Data Acquisition, Billing and Optimisation Management Tool. ATOM enables you to analyse historic data, generate reports and billing information while helping you to analyse and monitor the performance of your building and environmental impact.

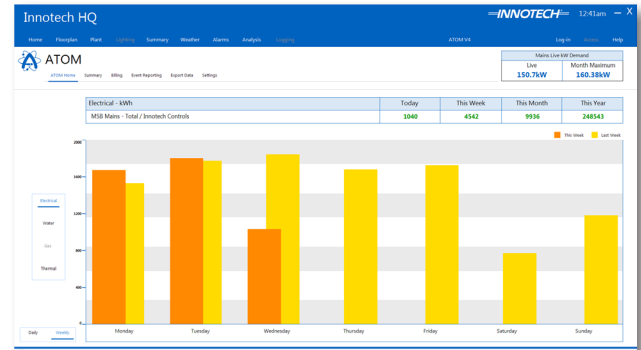
ATOM can be integrated into any new or existing buildings using your current infrastructure.

ATOM can be configured to acquire data from supported SQL Server databases, and generate billing and reporting information using a Tenant/Services database that can be customised to suit your application.

ATOM can be enabled as either a standalone solution or as a multiuser web based solution with support for up to 10 concurrent users via **Innotech eServer**.

Features

- Dynamic Graphical User Interface
- Real time monitoring of system data
- Comprehensive data analysis suite
- Set Daily Targets for each Tenant/Service
- Set tariffs, administration costs, tax rates and specific Tenant/Service data
- Coloured indication when usage exceeds the set targets
- Full Reporting and Billing capabilities. Generate report and billing data with relevant and timely information
- Password control with ability to set multiple-level user access
- Seamless integration with Innotech products and devices
- Integrated support for various Building Services protocols including: BACnet MSTP, BACnet/IP, OPC, Modbus RTU and Modbus TCP
- Relational database support for Microsoft® SQL Server® 2016 Express Edition database
- Connect to a local or remotely accessible SQL Server database
- Available as a single computer solution, or as a multi-user web-based solution with support for 10 concurrent connections over a network or internet connection



Applications

- Report on various building services: Electrical, Water, Gas, Hours Run for HVAC Equipment, Energy and Carbon Emissions (CO2-e)
- Generate reports and bill Tenants for various building services: between specific times and dates, including usage reports and activity statements for hours run
- Monitor all Primary Meters, and analyse your complete Environmental Impact and Totalisation of Resources
- View and identify inefficiencies in your system to reduce costs and lessen your environmental impact

Specifications

- Electronic security key for software protection required for use
- Requires a supported SQL Server database for data acquisition
Supported versions listed below

Supported SQL Server Databases

- Microsoft SQL Server 2016 Express Edition

Supported Operating Systems

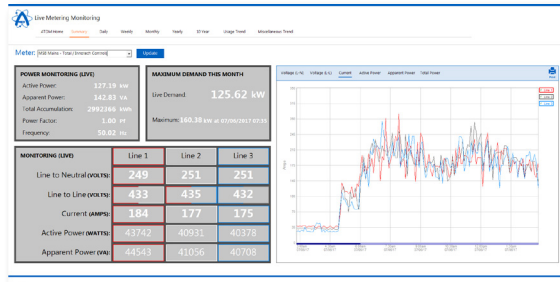
- Windows® 10 (64-bit)
- Windows® Server 2012 R2 with Service Pack 1

Minimum System Requirements

- Intel® Pentium® 2.8GHz dual core processor or better
- 4GB of RAM
- 15MB Hard Disk Drive space
- 1920 X 1080 display
- Keyboard and mouse or compatible pointing device

Real time Monitoring

- View the entire system at a glance with live updating system performance
- Monitor real time data via high level integration



Data Analysis



- Review, analyse and compare historical data over any hour, day, week, month, year or multiyear time frame
- Coloured indication when usage exceeds the set targets
- View individual Tenant/Service performance, set targets based on current and historical data



Meter	Usage	Usage	Usage	Usage	Usage	Usage	Usage
6 Office Drive	163,057.95	163,878.18	821.23	1.000	25.00	84.62	936.86
6 Office Drive Main Meter	224,528.29	225,500.11	1,031.82	0.232	25.00	26.46	291.05
8 Office Drive	61,470.34	61,680.60	210.26	0.200	25.00	6.71	73.78
AHUS CHWP Srv AC Ex Fans	416,302.02	417,824.00	1,521.98	0.151	25.00	25.48	280.30
Chiller	514,816.01	516,264.01	1,448.00	0.151	25.00	24.36	268.01
DB EL	23.00	23.00	0.00	0.151	25.00	2.00	27.50
DB MSB - Lighting	22,182.00	22,217.00	35.00	0.151	25.00	3.03	33.51
DB MSB - Total Power	15,959.00	15,441.00	42.00	0.151	25.00	3.13	34.48
DB UPS	488,084.00	487,736.00	1,652.00	0.151	25.00	27.45	301.90
DB 1.1 - Lighting	68,035.00	68,222.00	187.00	0.151	25.00	5.32	58.56
DB 1.1 - Total Power	270,354.02	271,071.01	716.99	0.151	25.00	13.33	146.59

Reporting and Billing

- Generate reports for different periods of time: Daily, Monthly, Yearly and Multiple Years
- View individual Tenant/Service performance, set targets based on current and historical data

Database Location: LAPTO P/SQL EXPRESS
 Generated: 10:55 am 01/06/2017
 Page 1 of 1

My Company Offices
 11 Company Street
 Officetown
 QLD 4000
 email@mycompany.com.au +61730000000

Electrical Summary
 Start Date: 01-05-2017
 End Date: 08-05-2017

Meter (Tenant)	Start Value	End Value	Usage	Tariff	Adm in	GST	Total
	kWh	kWh	kWh	S / kWh	AUD \$	AUD \$	AUD \$
6 Office Drive	163,057.95	163,878.18	821.23	1.000	25.00	84.62	936.86
6 Office Drive Main Meter	224,528.29	225,500.11	1,031.82	0.232	25.00	26.46	291.05
8 Office Drive	61,470.34	61,680.60	210.26	0.200	25.00	6.71	73.78
AHUS CHWP Srv AC Ex Fans	416,302.02	417,824.00	1,521.98	0.151	25.00	25.48	280.30
Chiller	514,816.01	516,264.01	1,448.00	0.151	25.00	24.36	268.01
DB EL	23.00	23.00	0.00	0.151	25.00	2.00	27.50
DB MSB - Lighting	22,182.00	22,217.00	35.00	0.151	25.00	3.03	33.51
DB MSB - Total Power	15,959.00	15,441.00	42.00	0.151	25.00	3.13	34.48
DB UPS	488,084.00	487,736.00	1,652.00	0.151	25.00	27.45	301.90
DB 1.1 - Lighting	68,035.00	68,222.00	187.00	0.151	25.00	5.32	58.56
DB 1.1 - Total Power	270,354.02	271,071.01	716.99	0.151	25.00	13.33	146.59



Australian Owned, Designed & Manufactured
 by Mass Electronics Brisbane

Phone: +61 7 3421 9100 Fax: +61 7 3421 9101
 Email: sales@innotech.com.au www.innotech.com.au

YOUR DISTRIBUTOR