

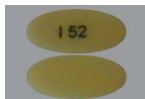
Brightside Specialty Pharmacy

431 N. Tustin Ave., STE C, Santa Ana, CA 92705

Phone 714-707-5115

Date :8/10/2022

Patient Education for PANTOPRAZOLE SOD DR 40 MG TAB



Call doctor if no improvement in condition Can cause pseudomembranous colitis Stopping medication early may lead to ineffective therapy/recurrence Dispense Medication Guide and explain to patient before use Swallow whole. Do not break, chew, crush, or dissolve. This drug may alter absorption of other medications. Heart attack symptoms are heart- burn, dizziness, and sweating. May increase risk of bone fractures. Consider calcium/vit D.

Call doctor if you are not getting better Call doctor if you get severe diarrhea Success is dependent on completing therapy course Before use, important to read the Medication Guide Swallow whole. Do not break/chew/crush/dissolve Call MD or RPh re: timing of taking with other meds Call MD now for heartburn with sweating & dizziness May increase risk of bone fractures.

.....Education Section.....

IMPORTANT:

HOW TO USE THIS INFORMATION: This is a summary and

does NOT have all possible information about this product. This information does not assure that this product is safe, effective, or appropriate for you. This information is not individual medical advice and does not substitute for the advice of your health care professional. Always ask your health care professional for complete information about this product and your specific health needs.

PANTOPRAZOLE DELAYED-RELEASE - ORAL

(pan-TOE-pruh-zole)

COMMON BRAND NAME(S):

Protonix

USES:

Pantoprazole is used to treat certain stomach and

esophagus problems (such as acid reflux). It works by decreasing the amount of acid your stomach makes. This medication relieves symptoms such as heartburn, difficulty swallowing, and cough. It helps heal acid damage to the stomach and esophagus, helps prevent ulcers, and may help prevent cancer of the esophagus. Pantoprazole belongs to a class of drugs known as proton pump inhibitors (PPIs).

OTHER USES:

This section contains uses of this drug that are not

listed in the approved US professional labeling for the drug but that may be prescribed by your health care professional. Use this drug for a condition that is listed in this section only if it has been so prescribed by your health care professional.

This drug may also be used for stomach and intestinal ulcers.

HOW TO USE:

Read the Medication Guide provided by your

pharmacist before you start taking pantoprazole and each time you get a refill. If you have any questions, ask your doctor or pharmacist.

Take this medication by mouth as directed by your doctor,

usually once daily. Dosage and length of treatment are based on your medical condition and response to treatment.

If you are taking the tablets, you may take them with or without food. Swallow the tablets whole. Do not split, crush, or chew the medication. Doing so may destroy the drug.

If you are taking the granules, take your dose 30 minutes before a meal. To take it by mouth, open the packet and mix the granules in applesauce or apple juice. Do not mix with other foods or liquids. Do not crush or chew the granules. Sprinkle the granules on 1 teaspoon (5 milliliters) of applesauce and swallow all of the mixture right away (within 10 minutes). Follow with sips of water. Or you can mix the granules with 1 teaspoon (5 milliliters) of apple juice in a small cup, stir for 5 seconds, and swallow all of the mixture right away. To make sure you take the entire dose, rinse the cup once or twice with apple juice to mix any remaining granules, and swallow the juice. Do not prepare the mixture ahead of time for later use.

If you are giving the granules through a tube into the stomach (nasogastric or gastric tube), ask your health care professional for detailed instructions on how to properly mix and give it.

If needed, antacids may be taken along with this medication. If you are also taking sucralfate, take pantoprazole at least 30 minutes before sucralfate.

Use this medication regularly to get the most benefit from it. To help you remember, take it at the same time each day. Continue to take this medication for the prescribed length of treatment even if you are feeling better.

Tell your doctor if your condition lasts or gets worse. The risk of side effects goes up over time. Ask your doctor how long you should take this medication.

SIDE EFFECTS:

Headache or diarrhea may occur. If any of these

effects last or get worse, tell your doctor or pharmacist promptly.

Remember that this medication has been prescribed because your doctor has judged that the benefit to you is greater than the risk of side effects. Many people using this medication do not have serious side effects.

Tell your doctor right away if you have any serious side

effects, including: symptoms of a low magnesium blood level (such as muscle spasms, irregular heartbeat, seizures), signs of lupus (such as rash on nose and cheeks, new or worsening joint pain).

This medication may rarely cause a severe intestinal condition due to a bacteria called *C. difficile*. This condition may occur during treatment or weeks to months after treatment has stopped.

Tell your doctor right away if you develop:

diarrhea that doesn't

stop, abdominal or stomach pain/cramping, blood/mucus in your stool.

If you have these symptoms, do not use anti-diarrhea or opioid products because they may make symptoms worse.

Rarely, proton pump inhibitors (such as pantoprazole) have caused vitamin B-12 deficiency. The risk is increased if they are taken every day for a long time (3 years or longer). Tell your doctor right away if you develop symptoms of vitamin B-12 deficiency (such as unusual weakness, sore tongue, or numbness/tingling of the hands/feet).

A very serious allergic reaction to this drug is rare. However, get medical help right away if you notice any symptoms of a serious allergic reaction, including: fever, swollen lymph nodes, rash, itching/swelling (especially of the face/tongue/throat), severe dizziness, trouble breathing, signs of kidney problems (such as change in the amount of urine).

This is not a complete list of possible side effects. If you notice other effects not listed above, contact your doctor or pharmacist.

In the US -

Call your doctor for medical advice about side effects. You may report side effects to FDA at 1-800-FDA-1088 or at www.fda.gov/medwatch.

In Canada - Call your doctor for medical advice about side effects. You may report side effects to Health Canada at 1-866-234-2345.

PRECAUTIONS:

Before taking pantoprazole, tell your doctor or

pharmacist if you are allergic to it; or to similar drugs (such as lansoprazole, omeprazole); or if you have any other allergies. This product may contain inactive ingredients, which can cause allergic reactions or other problems. Talk to your pharmacist for more details.

Before using this medication, tell your doctor or pharmacist your medical history, especially of: liver disease, lupus.

Some symptoms may actually be signs of a more serious condition. Get medical help right away if you have: heartburn with lightheadedness/sweating/dizziness, chest/jaw/arm/shoulder pain (especially with shortness of breath, unusual sweating), unexplained weight loss.

Before having surgery, tell your doctor or dentist about all the products you use (including prescription drugs, nonprescription drugs, and herbal products).

Proton pump inhibitors (such as pantoprazole) may increase your risk for bone fractures, especially with longer use, higher doses, and in older adults. Talk with your doctor or pharmacist about ways to prevent bone loss/fracture, such as by taking

calcium (such as calcium citrate) and vitamin D supplements.

Older adults may be more sensitive to the side effects of this drug, especially bone loss and fractures (see above), and *C. difficile* infection (see Side Effects section).

During pregnancy, this medication should be used only when clearly needed. Discuss the risks and benefits with your doctor.

This medication passes into breast milk. Consult your doctor before breast-feeding.

DRUG INTERACTIONS:

See also How to Use section.

Drug interactions may change how your medications work or increase your risk for serious side effects. This document does not contain all possible drug interactions. Keep a list of all the products you use (including prescription/nonprescription drugs and herbal products) and share it with your doctor and pharmacist. Do not start, stop, or change the dosage of any medicines without your doctor's approval.

A product that may interact with this drug is: methotrexate (especially high-dose treatment).

Some products need stomach acid so that the body can absorb them properly. Pantoprazole decreases stomach acid, so it may change how well these products work. Some affected products include ampicillin, atazanavir, erlotinib, levoketoconazole, nelfinavir, pazopanib, rilpivirine, certain azole antifungals (itraconazole, ketoconazole, posaconazole), among others.

This medication may interfere with certain laboratory tests (including urine test for tetrahydrocannabinol-THC, blood test to find certain tumors), possibly causing false test results. Make sure laboratory personnel and all your doctors know you use this drug.

OVERDOSE:

If someone has overdosed and has serious symptoms such

as passing out or trouble breathing, call 911. Otherwise, call a poison control center right away. US residents can call their local poison control center at 1-800-222-1222. Canada residents can call a provincial poison control center.

NOTES:

Do not share this medication with others.

If your doctor instructs you to use this medication regularly for a long time, laboratory and medical tests (such as a magnesium blood test, vitamin B-12 levels) may be performed periodically to monitor your progress or check for side effects. Keep all regular medical and laboratory appointments.

MISSED DOSE:

If you miss a dose, take it as soon as you

remember. If it is near the time of the next dose, skip the missed dose. Take your next dose at the regular time. Do not double the dose to catch up.

STORAGE:

Store at room temperature away from light and moisture.

Do not store in the bathroom. Keep all medications away from children and pets.

Do not flush medications down the toilet or pour them into a drain unless instructed to do so. Properly discard this product when it is expired or no longer needed. Consult your pharmacist or local waste disposal company.

Information last revised April 2022.

Copyright(c) 2022 First Databank, Inc.