

## **CCC/LifeWise Opportunity**

LifeWise is a nonprofit organization that offers help starting a Release Time Religious Education program in public schools.

### **LifeWise messaging to get 50 people to sign Community Interest List**

Hey! Have you heard of LifeWise Academy? I just signed a community interest list to help start a Bible education program for our local public school students and wanted to ask if you could help by adding your signature? We only need 50 signatures to get started! Here's the link to sign: <https://lifewise.org/district/2923580-mo-st-louis-county-parkway-c-2>

Tara Schwartz MO LifeWise Representative

Go to [LifeWise.org/tara](https://lifewise.org/tara) to set up a virtual meeting with her

### **Missouri Department of Elementary and Secondary Education**

DESE is the administrative arm of the State Board of Education

To view school district maps:

Go to: <https://dese.mo.gov/directory>

Hover over “School Data” and select “District and School Info”

Under header: “Directory, Calendar, & Maps”

Scroll down to and click on “School Directory Interactive Map”

Use “Search” on the right to find your school district.

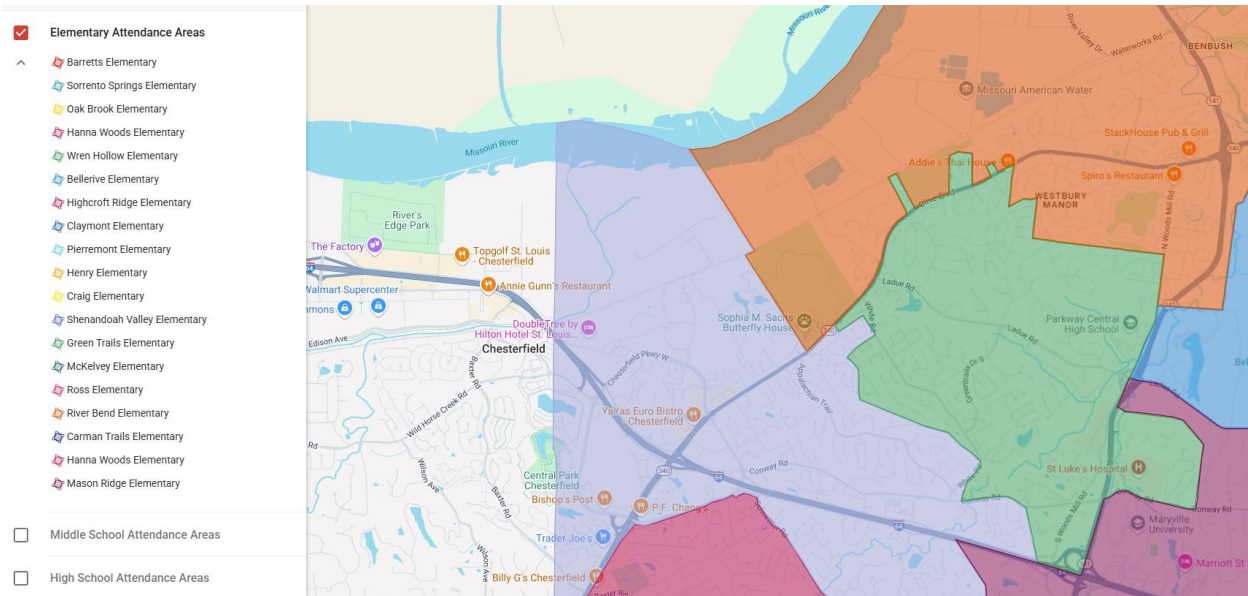
Report Card		 School  Charter	<b><u>Building List</u></b> Tabular: School Building Information used in the Missouri School Directory -- the variables and definitions for row headings: <a href="http://dese.mo.gov/school-directory/data-downloads">http://dese.mo.gov/school-directory/data-downloads</a>
<b>Districts, Charters, &amp; Schools</b>		 Reference	<b><u>Missouri School Statistics</u></b> Missouri School Directory Statistics of Public Schools (data as of 9/1/2024).
<b>INTERACTIVE DIRECTORY</b>		 Reference	<b><u>School Directory Interactive Map</u></b> Maps are provided purely for reference, please contact county authorities to obtain official school district boundary information.
School Performance & Accountability College & Career Education School Finance Data		 Reference	<b><u>Missouri School Directory Resources</u></b> Missouri School Directory resources on DESE website.
Students			
Teachers			

### **Parkway Schools Maps & Boundaries**

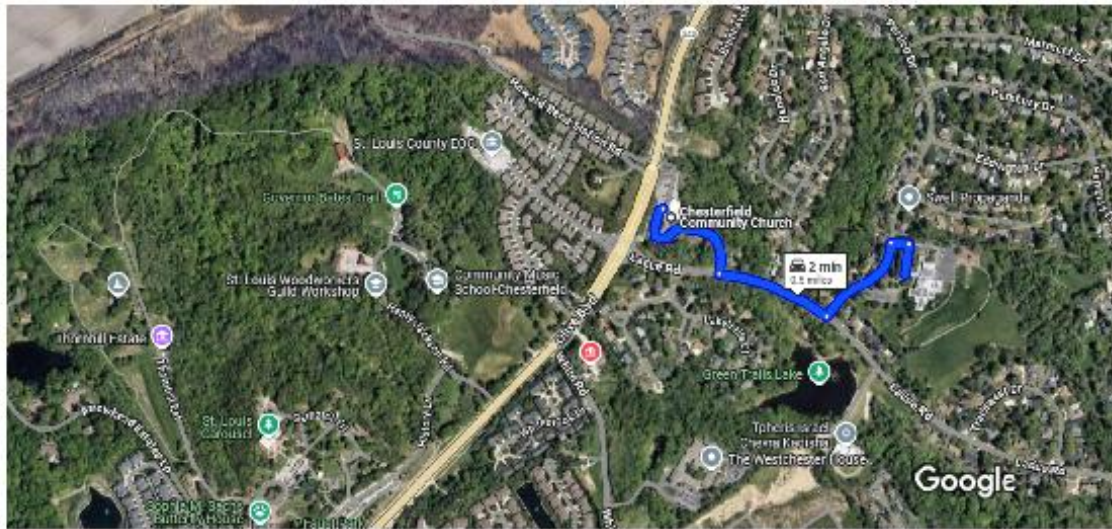
<https://www.parkwayschools.net/domain/990>

10-15 minutes for elementary school children to walk to Chesterfield Community Church

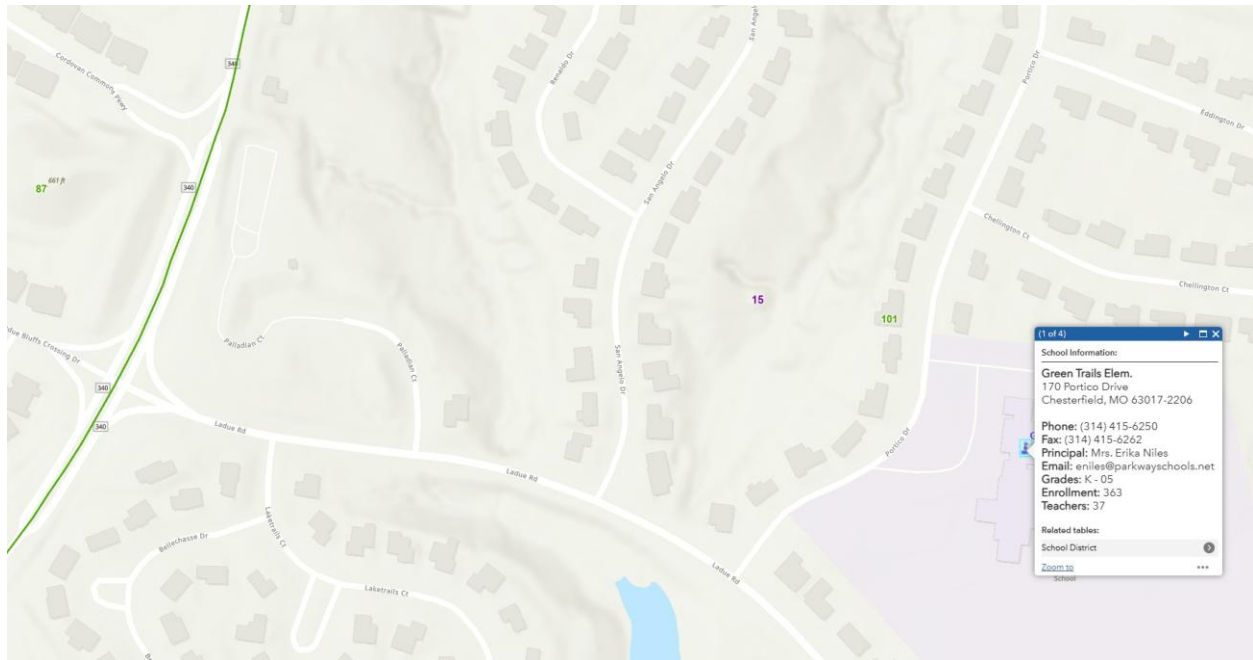
Approximately 379 students in grades K-5



Green Trails Elementary School District boundary is in green.



**Chesterfield Community Church**  
14647 Ladue Rd, Chesterfield, MO 63017



## **Responding to the doors God opens up:**

### **1 Corinthians 16**

<sup>5</sup> I will come to you after I pass through Macedonia—for I will be traveling through Macedonia— <sup>6</sup>and perhaps I will remain with you or even spend the winter, so that you may send me on my way wherever I go. <sup>7</sup> I don't want to see you now just in passing, for I hope to spend some time with you, if the Lord allows. <sup>8</sup> But I will stay in Ephesus until Pentecost, <sup>9</sup> because a wide door for effective ministry has opened for me<sup>[b]</sup>—yet many oppose me. <sup>10</sup> If Timothy comes, see that he has nothing to fear from you, because he is doing the Lord's work, just as I am. <sup>11</sup> Therefore, no one should look down on him. Send him on his way in peace so he can come to me, for I am expecting him with the brothers.<sup>[c]</sup>

<sup>12</sup> About our brother Apollos: I strongly urged him to come to you with the brothers, but he was not at all willing to come now. However, he will come when he has an opportunity.

### **2 Corinthians 2**

<sup>12</sup> When I came to Troas to preach the gospel of Christ, the Lord opened a door for me. <sup>13</sup> I had no rest in my spirit because I did not find my brother Titus, but I said good-bye to them and left for Macedonia.

Romans 15:20, 21

<sup>20</sup> My aim is to evangelize where Christ has not been named, so that I will not build on someone else's foundation, <sup>21</sup> but, as it is written:

Those who were not told about Him will see,  
and those who have not heard will understand.

## **Legal Information**

### **SB 698**

Requires school districts to establish a policy allowing students to be excused from class to receive religious or moral instruction off school property

Effective Date: August 28, 2025

[https://www.senate.mo.gov/25info/BTS\\_Web/Bill.aspx?SessionType=R&BillID=4845583#:~:text=SB%20698%20%2D%20This%20act%20requires,a%20%22released%20time%20course%22.](https://www.senate.mo.gov/25info/BTS_Web/Bill.aspx?SessionType=R&BillID=4845583#:~:text=SB%20698%20%2D%20This%20act%20requires,a%20%22released%20time%20course%22.)

### **Amendment to Section A, Chapter 162, RSMo**

<https://www.senate.mo.gov/25info/pdf-bill/intro/SB698.pdf>

## **LifeWise Signup Information**

Homepage: <https://lifewise.org/>



Click

Voice Your Support

# FIND YOUR SCHOOL DISTRICT

Search districts by: ☐ Name ☒ Zip Code



Enter Zip Code 63017

Select MO-St. Louis County-Parkway C-2(63017)

Click Voice Your Support again, follow the prompts, and enter you information.


COMPLETE YOUR SUPPORT

✓

✓

3

How to start  
A LIFEWISE FAST!



Before you go, will  
you share and help us  
get more signatures?


Tip: Direct messages are significantly more likely to  
get people to sign.


Copy link


Messenger


Email


Lifewise  
ACROSS THE NATION  
+++


 Rob W. signed a community interest list in PA  
3 hours ago

 Christine M. signed a community interest list in OH  
3 hours ago

 Rylee O. signed a community interest list in OH  
3 hours ago

 Jessica P. signed a community interest list in IL  
3 hours ago

 Melodia W. signed a community interest list in TN  
3 hours ago

 Woody S. signed a community interest list in MN  
3 hours ago

Nationwide Spread

Schools served  
**578**

Students enrolled  
**44,099**

Total interest list signatures  
**164,999**

Districts with signatures  
**7,612**

States with signatures  
**ALL 50 STATES**

Page 5 of 5