



**Mighty Mini**  
Utility Inspection Transporter

# Mighty Mini

## Utility Inspection Transporter

### BIG PERFORMANCE IN A SMALL SIZE.

Fitting in pipes as small as four inches, this transporter offers big performance with an easily adjustable cantilevered camera mount, powerful 90-watt motor and four-wheel drive.

### General Features

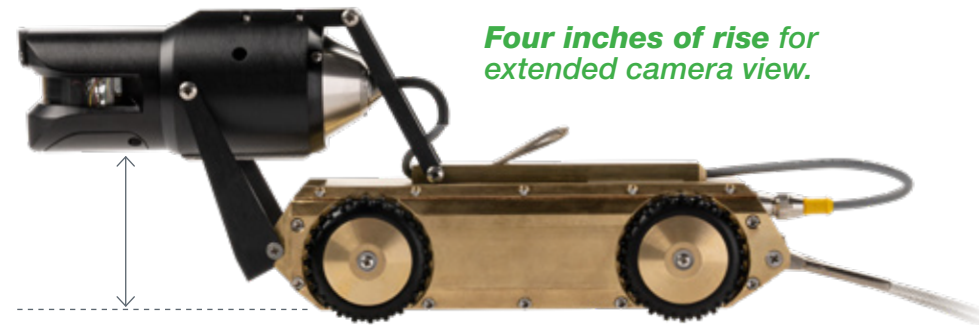


- Functions on up to 2,000 feet of cable.
- Three forward speeds, reverse and freewheel.
- Single-conductor technology for significant cost and performance advantages over multi-conductor technology through interchangeability of components, backwards and forwards compatibility, and reduced downtime.
- Water resistant per IP68 requirements.

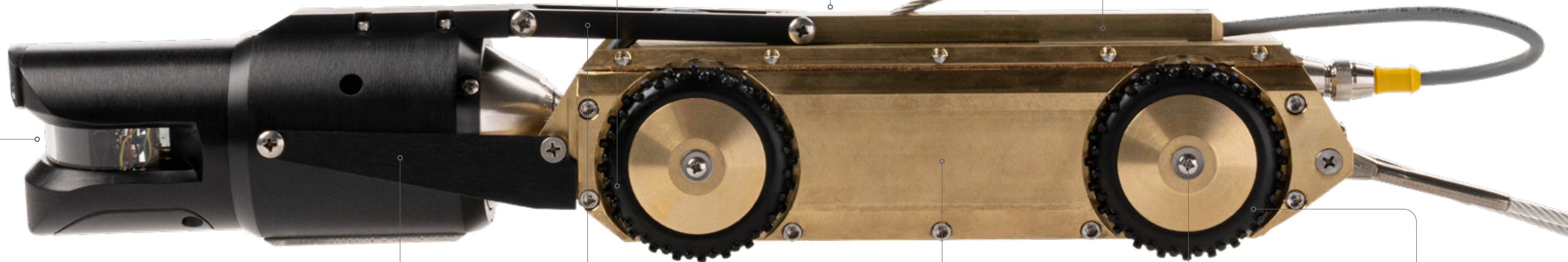
4"-12" diameter pipe

**SinCon cable features a 5,400-pound breaking strength (versus 500 to 2,000 pounds for multi-conductor cable).**

### Rear View



Four inches of rise for extended camera view.



Simple clutch mechanism for free-wheel retrieval.

Easy-access pressure port for convenient leakage testing.

Rugged cable connection loop for easy deployment and retrieval.

Durable, 1/8-inch stainless steel aircraft cable bridle for secure unit retrieval.

Powerful 90-watt motor for reliable performance.

Full 360° continuous rotate capability and a 270° panning capability.

Manual elevator, cantilevered camera mount.

Compact design fits in four-inch pipe.

Single-bolt mounting point for quick wheel removal and installation.

Four-wheel drive to power through tough spots.

### Available Cameras

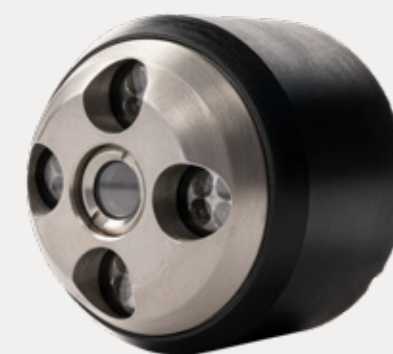
#### OmniStar Probe

- 360° continuous rotate capability and a 270° panning capability for easy pipe inspection.
- Micro-processor control featuring a Home function to return camera head to upright and straight-ahead position.
- Compact, rugged, aluminum and stainless-steel housing.
- Four (4) high-intensity LEDs.



#### 1306

- High-resolution camera.
- Adjustable focus (manual).
- Four (4) high-intensity LED lights.
- Stainless-steel body.
- Compatible with all standard-voltage controllers (1375 & Mainline) and with the Subsite Push Camera.



### Available Wheels



Standard



Hi-Trak Casters



MegaTrak  
2.7" / 3.3" / 4.5"

# TRANSPORTER SPECIFICATIONS



	mighty mini	LATERAL LAUNCH	TRANSTAR II	TRANSTAR	PROTRAK	STORM DRAIN
PIPE SIZES	4" to 12"	6" to 24"	6" to 24"	6" to 30"	6" (relined) to 30"	24" and up
STEERABLE	-	-	✓	✓	-	✓
ELEVATOR	✓ (manual)	✓	✓	✓	-	✓
WEIGHT (w/o camera)	15 lbs	42.5 lbs	30 lbs	37.5 lbs	33 lbs	100 lbs
LENGTH (w/o camera)	11"	32"	14"	19"	27"	36"
SPEEDS (Forward/Reverse)	3/1/freewheel	3/1/freewheel	3/1/freewheel	3/1/freewheel	3/1/freewheel	3/1/freewheel
MOTOR/POWER	90W	90W	2 x 90W	2 x 90W	150W	125W

**The industry's ONLY CABLE WARRANTY—5 YEARS**  
**The industry's ONLY 2-YEAR TRANSPORTER WARRANTY**

## More Than 30 Years of Innovation.

Our inspection system technology traces its roots back three decades with many innovative “firsts” to the marketplace.

- ⌘ First mainline color camera featuring internal lights.
- ⌘ First U.S. manufacturer to build a true pan-and-tilt camera with tracking lights.
- ⌘ First to manufacture cable reels that offer “electrical gear selection” and a true freewheeling cable drum.
- ⌘ First tractor design to provide freewheeling for rapid return.
- ⌘ First to design an electronic circuit to double tractor torque without increasing supply current.
- ⌘ First to introduce a steerable storm drain tractor or large pipeline tractor.
- ⌘ First U.S. company to design an explosion-proof camera and tractor approved for Class I Division I applications.
- ⌘ First to design a universal tap-cutting control system for single-conductor camera systems.
- ⌘ First to design single conductor laser and sonar profiling systems.
- ⌘ First manufacturer to produce a single conductor panomorphoc camera system.

To find a Utility Inspection System dealer near you, visit [subsite.com/find-a-dealer](https://www.subsite.com/find-a-dealer).

