

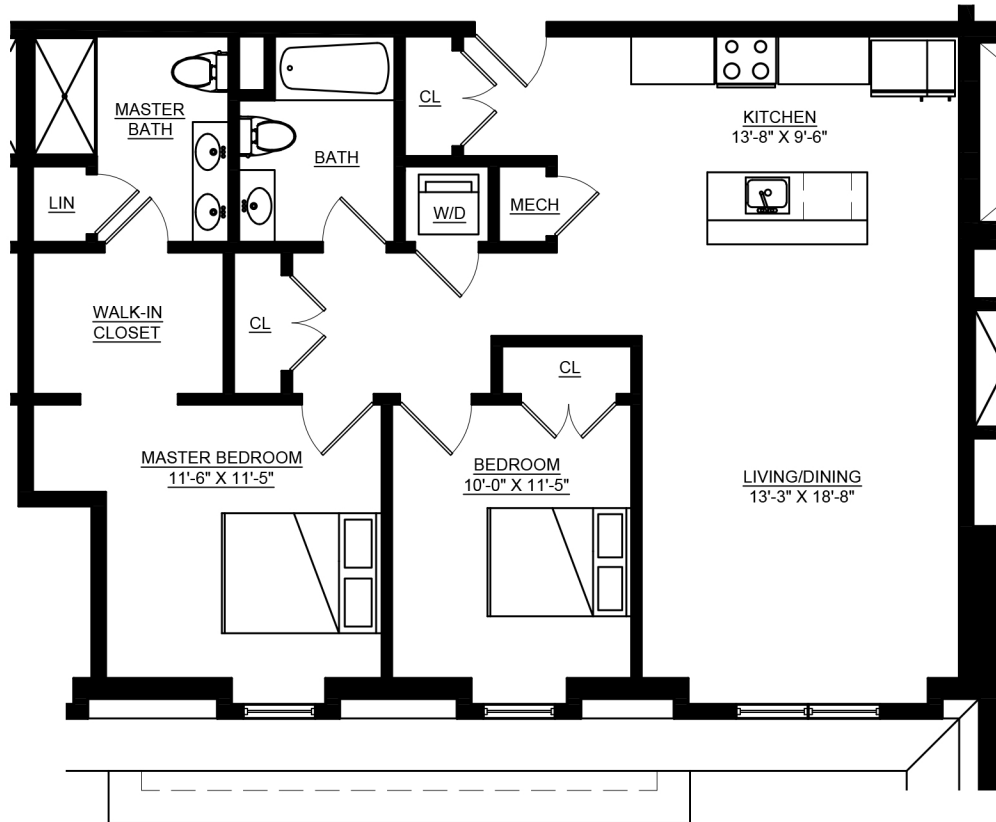
# 765 E. THIRD ST.

## UNIT 406

2 BEDROOM

2 BATH

1,028 SQFT



PLANS, DIMENSIONS AND FEATURES SHOWN ARE APPROXIMATE AND ARE SUBJECT TO CHANGE WITHOUT NOTICE OR OBLIGATION. VARIATIONS MAY OCCUR DEPENDING, FOR EXAMPLE, ON CONSTRUCTION VARIANCES, LOCATION OF UNIT AND/OR MECHANICAL OR STRUCTURAL REQUIREMENTS.

CEILING HEIGHTS ARE SUBJECT TO CHANGE.

BALCONIES AND GLAZING ARE SUBJECT TO CHANGE.

