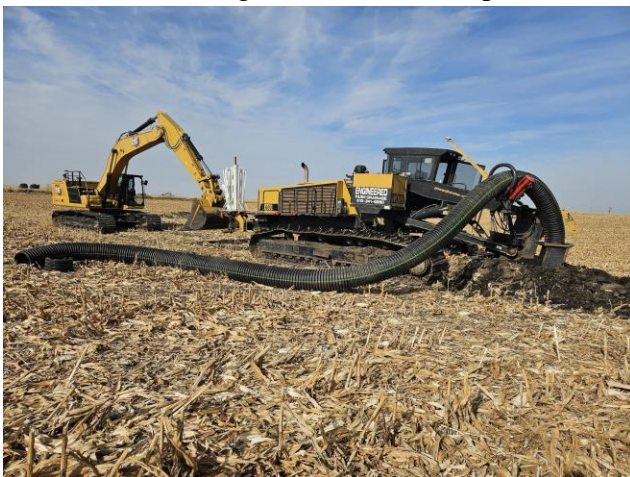


GPS & Locating Equipment



Installing 15" Dual Wall Pipe



Tile your field for maximum yield!



Services: - Drainage - Excavating - Grading
- Land Clearing - Septic - Material Hauling



Engineered Farm Drainage

📍 1602 210th St., Algona, IA 50511
📞 Michael Erpelding: (515) 341-6280
🌐 www.engineeredfarmdrainage.com
✉ Office@engineeredfarmdrainage.com
📘 Facebook: Engineered Farm Drainage



“Tile your field for maximum yield”

Maximize your land’s full potential
—season after season— with custom
tile drainage systems tailored to your
field’s unique needs.

Services: - Drainage - Excavating - Grading
- Land Clearing - Septic - Material Hauling

Step 1: Discuss & Determine

What are **YOUR** Drainage Goals?

- Maximize Yield?
- Reduce Financial Risk?
- Enhance Soil Aeration?
- Extend the Planting & Harvest Window?
- Improve Weed & Pest Control?
- Higher Drought Tolerance & Deeper Developed Root Systems?
- Reduce Compaction & Erosion?
- Higher Input Absorption and Utilization?
- Healthier Soil Environment?
 - Corn yield increase 15-40%
 - Soybean yield increase 10-30%
- Environmental Conservation Practices?
- Increased Land Value & Peace of Mind?

These are just a few possible drainage goals that we can help you with when you call!

★ **Tile your field for maximum yield!**

Step 2: Design & Develop

How to Achieve Your Drainage Goals?

We will assess, design, and develop a specific drainage plan that is tailored to you.

A cost-benefit analysis is conducted to calculate the return on investment (ROI) of your proposed drainage project.

- We evaluate relevant information-including drainage maps, GIS data, LiDAR, drone imagery, soil types, topography, water table levels, crop history, and field usage
- Drainage coefficient and project requirements would be determined
- Strategically placed tile lines will be positioned for future tile additions and complement existing natural topography
- We utilize a Wolfe 600 parallel link plow to automate the tile installation process
- Various drainage preferences can be discussed and incorporated
- Bright, full colored, digital, GPS map of completed assessment and/or project

Services: - Drainage - Excavating - Grading
- Land Clearing - Septic - Material Hauling

Step 3: Deploy & Deliver

When & Where to Begin Installation?

Farm drainage is a once-in-a-lifetime investment. That's why it's essential to have a system that's professionally designed, properly installed, and completed on schedule.

We'll keep you in the loop every step of the way. After we finalize your drainage plan, align with your timeline, and the field's ready, we haul in the equipment and get to work.

Cover Crop Benefits

Crops like Brassica Radish, Triticale, and Cereal Rye help break up soil compaction deeper within the soil profile

Species such as Oats, Turnips, and Red Clover alleviate surface crusting and improving soil structure near the top layer

☎ Michael Erpelding: (515) 341-6280
🌐 www.engineeredfarmdrainage.com

