



Shower Pans offering a new collection of wall cladding.



DESIGNED  
IN EUROPE  
PROUDLY  
MADE IN  
**USA**



**Wall panels and tiles reinvented.**

# America's First Original Engineered Stone Wall Panels and Tiles



residential  
**life time**  
**WARRANTY**  
15 years  
commercial

DESIGNED  
IN EUROPE  
PROUDLY  
MADE IN  
**USA**



## Why choose Dumawall?

Dumawall wall panels and tiles are innovative products designed with a “less is more” philosophy, blending modern design with timeless style. Crafted from 100% recyclable engineered stone, they are both waterproof and durable, minimizing the need for frequent replacements and reducing waste over time.

Our zero-waste manufacturing process and energy-efficient production further lessen environmental impact, making Dumawall a top choice for eco-conscious consumers who value sustainable building practices.



CUT



GLUE



UV  
RESISTANCE



STRONG



QUICK  
INSTALLATION



NO  
DEMOLITION



NO DIRTY  
JOINTS



WATERPROOF



ZERO  
WASTE  
PRODUCTION



HEALTHIER  
INDOOR AIR  
QUALITY

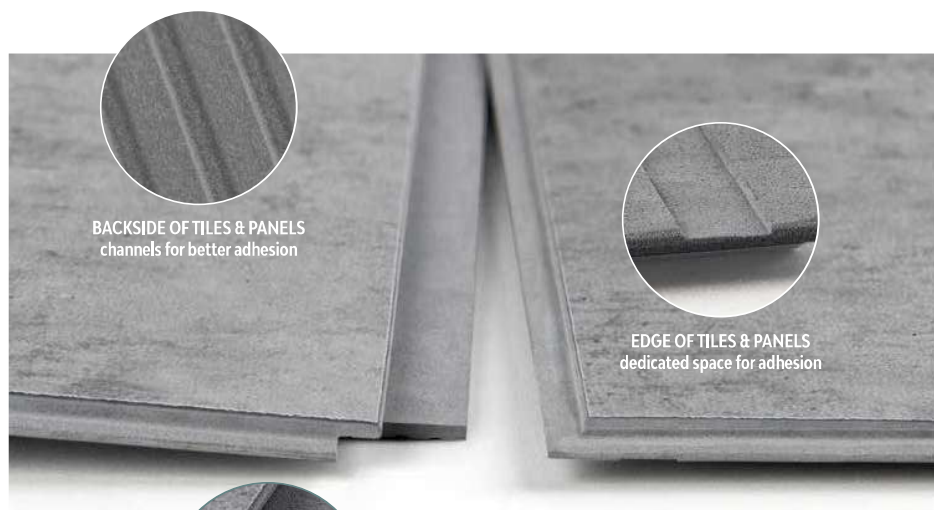


EASY TO CLEAN,  
EASY TO  
MAINTAIN

## Easy Installation

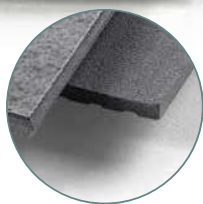


Dumawall products are designed for easy installation without the need for special tools, making them ideal for both DIY enthusiasts and professionals. The straightforward process allows for quick setup, often completed in under a day, saving time, reducing labor costs, and minimizing disruption—perfect for hassle-free home improvement projects, multi-family residences, and large commercial installations like hotels and gyms.



BACKSIDE OF TILES & PANELS  
channels for better adhesion

EDGE OF TILES & PANELS  
dedicated space for adhesion



extra-long lipped edge  
for easy installation

Dumawall's tongue-and-groove system simplifies the installation of wall panels and tiles, providing a quick, easy, and waterproof solution. Our innovative design guarantees a precise fit and flawless finish without the need for complicated tools, enhancing durability, stability, and installation speed. The specially designed lipped edge ensures a mess-free adhesive application. Ideal for both DIY enthusiasts and professionals, this system offers a long-lasting, professional appearance with minimal effort.



## Patented RCB technology



Dumawall's patented RCB (Rigid Core Board) technology combines the strength of engineered stone with the flexibility of composite materials, resulting in durable, easy to maneuver, waterproof products ideal for various environments, including high-moisture areas. Made from recyclable materials, these panels and tiles are designed to last and come with a lifetime residential warranty and a 15-year commercial warranty, ensuring long-term value and sustainability.



**RCB® Rigid Core Board**  
patented Rigid Core Board technology

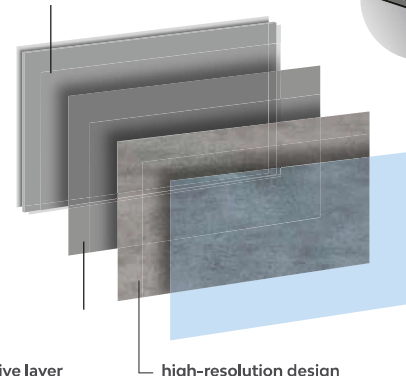
only 5 mm thick



**Innovative layer including RCB technology guarantees 100% waterproof patented products**

high-resolution design

protective antimicrobial lacquer finish



## Greenguard Gold Certification



Greenguard Gold Certification ensures that a product meets rigorous standards for low chemical emissions, especially VOCs (volatile organic compounds), which can negatively affect indoor air quality. Dumawall, being VOC-free, doesn't release harmful chemicals, making it a safer and healthier choice for homes, schools, and healthcare settings. This certification is especially beneficial for those with allergies or sensitivities, helping to create safer, more comfortable environments with better indoor air quality.



DumawallXL / London





HEALTHIER  
INDOOR  
AIR

## Healthier indoor air quality

Dumawall is the perfect solution for anyone who want to combine style, safety, and health in their living spaces. Not only does Dumawall offer a sleek, modern look, but the panels and tiles come with the reassurance of being GreenGuard Gold Certified. This means Dumawall releases zero chemicals and pollutants, contributing to a cleaner, healthier indoor environment. By choosing Dumawall, you're not only upgrading aesthetics in a space, but also prioritizing the safety and health of the environment with superior air quality.



NO  
DEMOLITION

## Skip the demolition

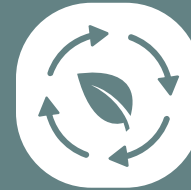
One of the key advantages of Dumawall is that it can be installed directly over existing tile, eliminating the need for messy and time-consuming demolition work. This not only saves you the hassle of tearing out old tile but also reduces labor costs and shortens the installation process. With Dumawall, you can quickly transform spaces with a fresh, modern look while saving time and money. The simple installation method makes it an ideal choice for homeowners, designers, contractors, etc. looking for an efficient and cost-effective renovation solution.



EASY  
CLEAN

## Easy to clean, easy to maintain

Dumawall is designed with convenience in mind, offering an easy-to-clean and low-maintenance solution for both residential and commercial spaces. Additionally, its stain-resistant surface can withstand a variety of common household chemicals, making it tough and durable without requiring harsh cleaners or constant upkeep. The top lacquered layer features antimicrobial properties, adding an extra layer of protection against bacteria and germs. With Dumawall, you get a hassle-free, long-lasting product that looks great while standing up to daily wear and tear.



## Zero waste innovation

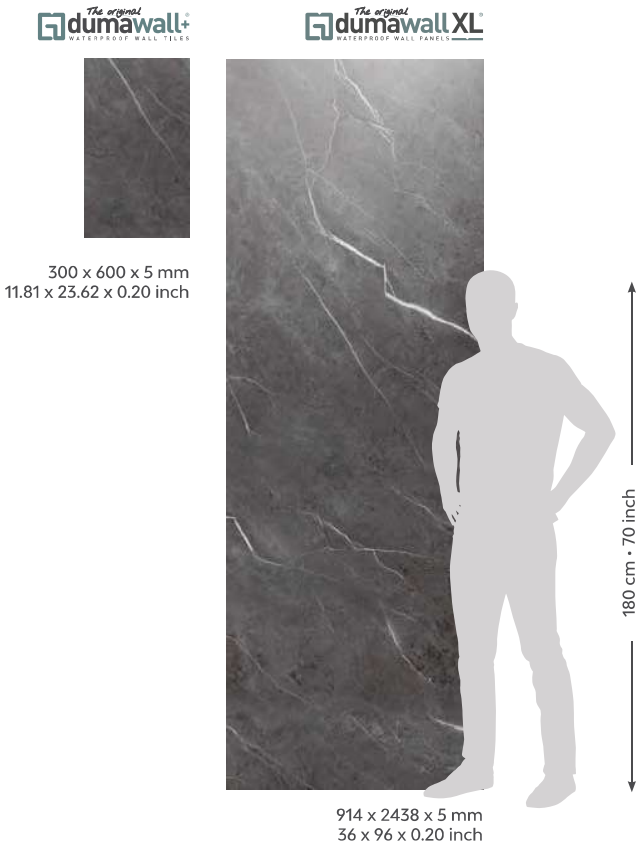
Dumawall is committed to sustainability as a zero-waste company, meaning every step of our production process is designed to minimize environmental impact. We strive to ensure that no materials are wasted, and any excess is repurposed or recycled, contributing to a more sustainable future. By choosing Dumawall, you're not only investing in a stylish and durable product but also supporting a company that prioritizes eco-friendly practices. Our zero-waste approach reflects our dedication to reducing landfill waste and conserving resources, making Dumawall an environmentally responsible choice for both residential and commercial projects.



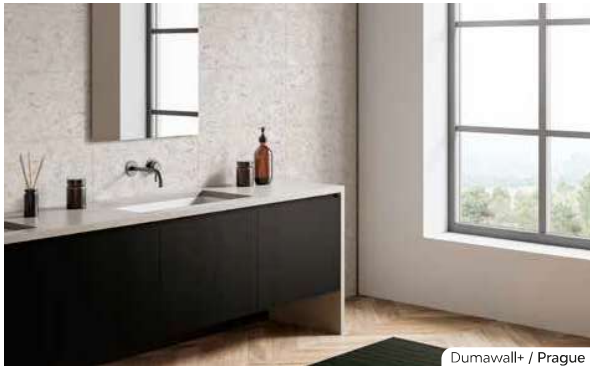
Dumawall+ / Paris

# Dimensions

Dumawall offers versatile sizing to fit various design needs. The wall panels come in a convenient 3 ft by 8 ft size, ideal for efficiently covering larger surfaces. For a more traditional tile aesthetic, Dumawall tiles are available in a 1 ft by 2 ft size, providing flexibility for both large-scale and detailed projects.



Dumawall XL / Rome



Dumawall+ / Prague



Dumawall+ & Dumawall XL / Amsterdam



Dumawall XL / Berlin



Dumawall XL / Amsterdam



Dumawall+ / Barcelona



Dumawall XL / Prague



Dumawall XL / Brussels

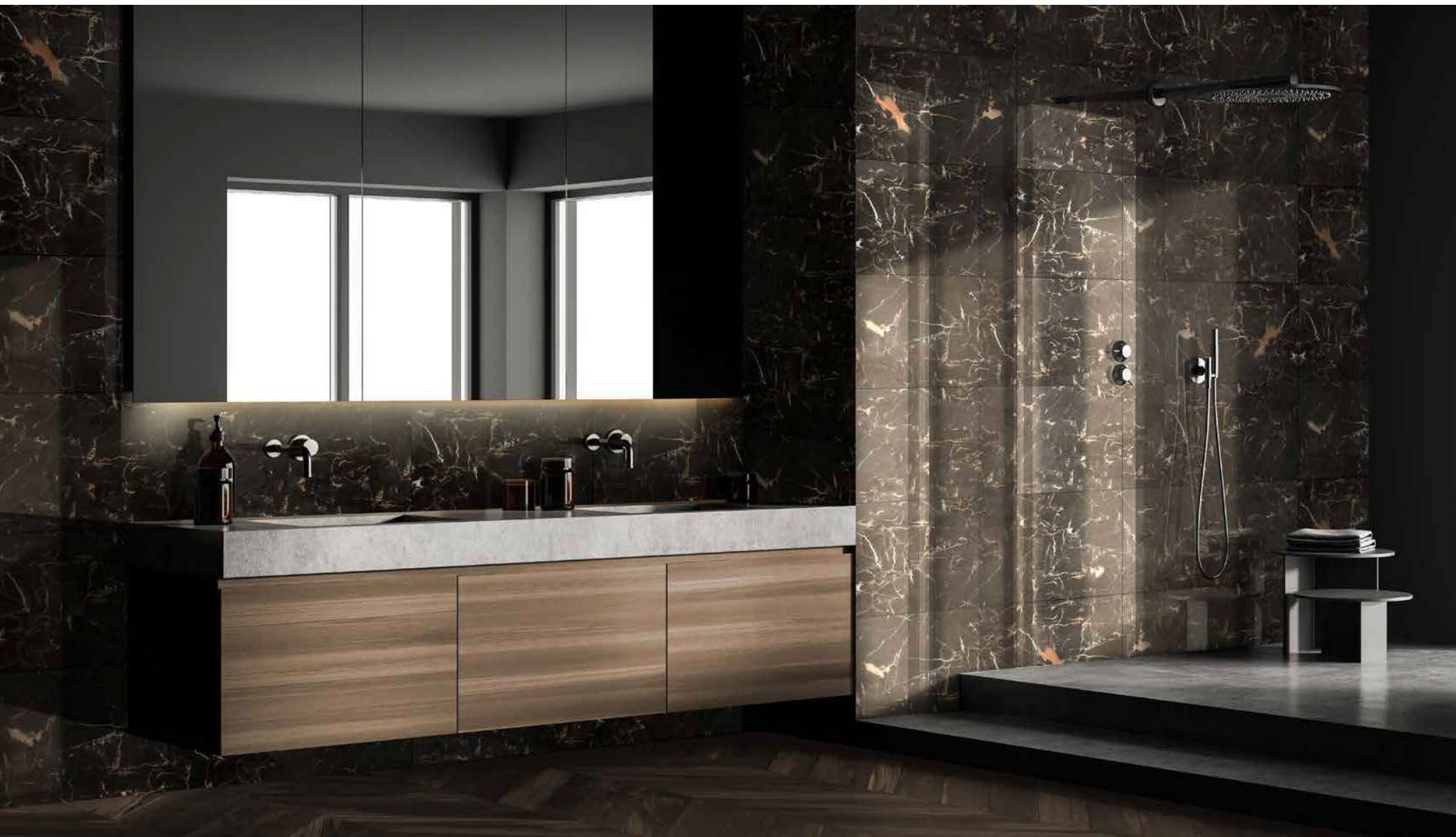


Dumawall+ / Rome



Dumawall XL / Brussels



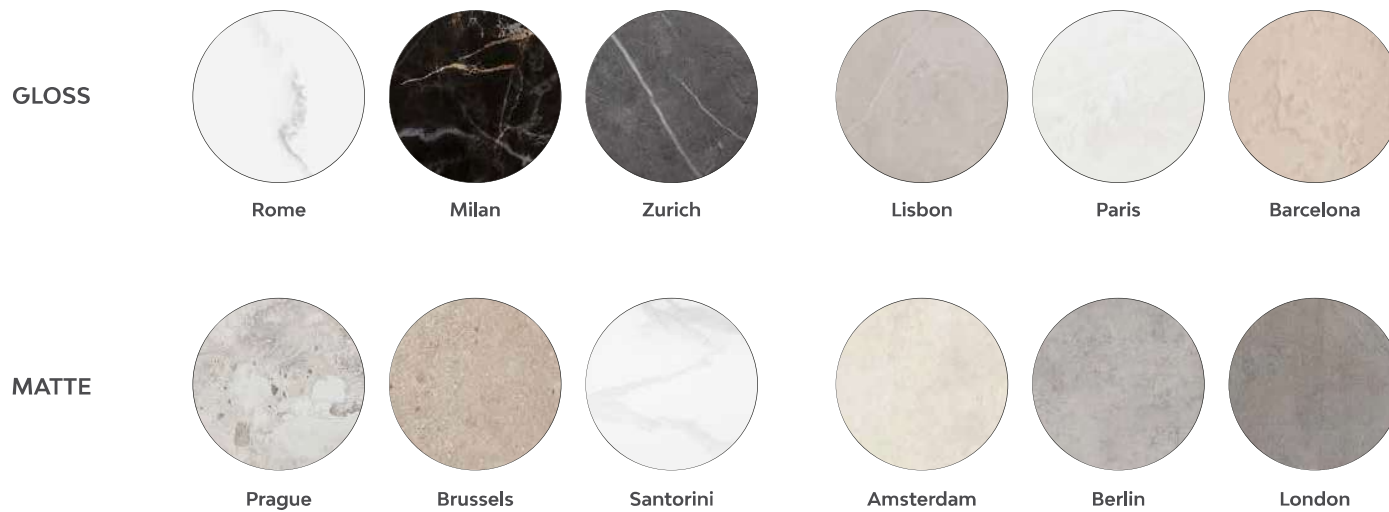


Dumawall+ / Milan



## Collection panels and tiles

Dumawall panels and tiles are available in twelve distinct colors, catering to a wide range of interior styles. Six colors feature a glossed finish for a sleek, reflective surface, while the other six offer a matte finish for a modern, textured look. This variety ensures Dumawall products can match diverse design preferences and create the perfect ambiance in any space.

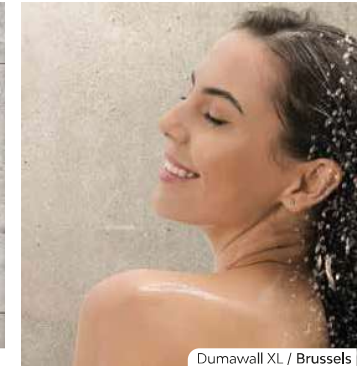




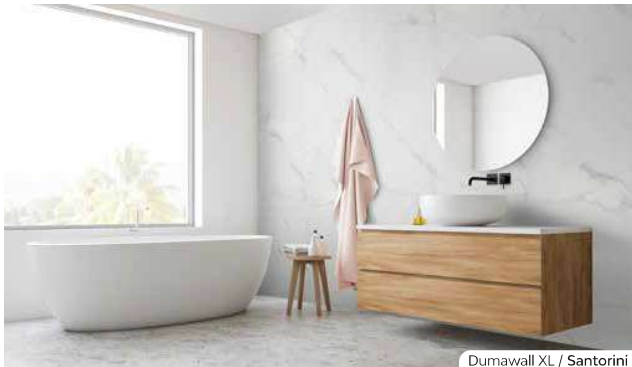
Dumawall XL / Milan



Dumawall+ / Prague



Dumawall XL / Brussels



Dumawall XL / Santorini



Dumawall XL / London



Dumawall+ / Lisbon



Dumawall+ / Berlin



Dumawall+ / Zurich



Dumawall+ / Paris





Dumawall XL / Zurich



# Panels & tiles gloss

PANEL 914 x 2438 x 5 mm • 36 x 96 x 0.20 inch



Rome panel



Milan panel



Zurich panel



Lisbon panel



Paris panel



Barcelona panel

TILE 300 x 600 x 5 mm • 11.81 x 23.62 x 0.20 inch



Rome tile



Milan tile



Zurich tile



Lisbon tile



Paris tile



Barcelona tile

Panels & tiles matt

PANEL 914 x 2438 x 5 mm • 36 x 96 x 0.20 inch



Prague panel

Brussels panel

Santorini panel



Amsterdam panel

Berlin panel

London panel

TILE 300 x 600 x 5 mm • 11.81 x 23.62 x 0.20 inch



Prague tile

Brussels tile

Santorini tile



Amsterdam tile

Berlin tile

London tile

## Shower Pans LLC

Showroom : 84 Lower Dowda Mill Rd  
Jasper, GA 30143



Office : 650-763-2185

Email: [info@showerpanliners.com](mailto:info@showerpanliners.com)

[www.showerpanliners.com](http://www.showerpanliners.com)

version: 2024-1