

JAMES &
NICHOLSON

ORGANIC COTTON

JAMES &
NICHOLSON



BRAND STATEMENT

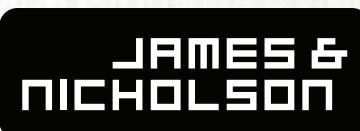
Both in textile promotion and in corporate fashion wear **JAMES & NICHOLSON** and **myrtle beach** are meanwhile among the best-known and most popular brands. The product diversity of the two product lines is unparalleled and is expanded every year by around 40 fashionable novelties. In the fields of sports, leisure, business and work there is hardly any top or headgear which is not included in the diverse product line.

JAMES & NICHOLSON stands for functional sportswear for almost every sport, for trendy leisurewear and jackets as well as for classic business wear and sturdy workwear. For all everyday situations **JAMES & NICHOLSON** offers suitable clothing for ladies and men. Most basics are available in almost 40 colours as well as in outsizes up to 6XL.

Fashionable and functional headwear as well as trendy accessories, which can be combined very well with the **JAMES & NICHOLSON** collection, that is what **myrtle beach** stands for. The wide range of cap shapes and cap designs is unique and at the same time innovative, for a few of the products of myrtle beach are prize-winning. In recent years the Promotional Gift Award has been won several times by clever cap inventions which have definitely enriched the promotional market. The headwear brand is extended by trendy scarfs, gloves and the large spa collection, which offers terry products for sports and the catering trade in more than 20 colours.

The storage capacity of the brands is 20 million pieces, 98% of which are always available. Extremely short delivery times and a smooth handling of direct shipment are a great advantage **JAMES & NICHOLSON** and **myrtle beach** offer their customers. Service takes top priority – in day-to-day business the focus is always on the customer. That is why the quality of the product lines is the most important thing of the company philosophy – from inception to completion and beyond. **JAMES & NICHOLSON** and **myrtle beach** are manufactured with social and ecological responsibility. All the textiles are REACH-compliant and manufactured according to Oeko-Tex® Standard 100. Since 1999 social and environmental aspects have been integrated into the company code of conduct. They are submitted to strict controls.

This year too, the new collection radiates a zest for life: always up to the minute in business and therefore trend-, quality- and price-conscious! With **JAMES & NICHOLSON** and **myrtle beach** several price levels from low budget to premium will guarantee excellent value for money for the customer.



RESPONSIBILITY

SOCIAL COMPLIANCE

As members of the, BSCI/Business Social Compliance Initiative' we commit ourselves to implementing the BSCI code of conduct as part of our business relations with our manufacturers and thus to improving the working conditions within our supply chain and to producing our textiles fairly. This includes our clear commitment to the employees' right to freedom of assembly, protection against discrimination, and an adequate remuneration, that is, at least the statutory national minimum wage.

Another central component is the occupational safety regulations. That is how we guarantee that the occupational safety regulations of the ILO (International Labour Organisation) are met. Child labour, forced labour or precarious jobs are not tolerated. Several social compliance departments in the countries of production test all the factories thoroughly and make sure that these conditions are met.



PROTECTION OF THE ENVIRONMENT

All the products of **myrtle beach** and **JAMES & NICHOLSON** are produced in an environmentally friendly way.

QUALITY STANDARD

The merchandise is regularly tested by certified testing institutes in the countries of production regarding the given parameter. Moreover, in cooperation with SGS, Testex, Hohenstein and other renowned institutes the quality is continually controlled.

OEKO-TEX® STANDARD 100

This standard guarantees that textile and non-textile product components pose no threat to health.



ADHERENCE TO THE REACH - REGULATIONS

We assure you that when manufacturing our **myrtle beach** products and **JAMES & NICHOLSON** textiles we meet the obligations of the REACH-regulations.

OCS STANDARD

When manufacturing garments of **myrtle beach** and **JAMES & NICHOLSON**, the Organic Content Standard is a standard for verifying and tracking the exact content of organically grown materials in a final product. Among other things, the superordinate 'Content Claim Standard' defines with OCS the traceability of merchandise as well as the transparency within the production chain.



Made with 100%
Organically Grown Cotton
Certified by CU853836



Made with 50%–95%
Organically Grown Cotton
Certified by CU853836



WE'VE BECOME A CLIMATEPARTNER

CLIMATE-NEUTRAL CATALOGUE SINCE 2020

Our goal is for both our products and our corporate values to be geared toward sustainability. We therefore want to take responsibility for the emissions that printing our catalogue produces and give something back to nature in the process. That's why we've become a ClimatePartner and are producing a climate-neutral catalogue. As a ClimatePartner, we've been able to offset the 226,800 kg of CO₂ needed to print this year's catalogue and consequently help plant new forests throughout Germany.

AFFORESTATION FOR A BETTER CLIMATE

The effects of climate change are being felt all over the world, and Germany is no exception: Forest fires are destroying vast swathes of woodland and parasites are spreading rapidly in these now depleted areas. Species of tree such as the spruce are suffering from drought stress and heat damage because their shallow roots cannot reach the deeper layers of the earth that contain water. This is why we support afforestation and want to see more forests in Germany transformed into mixed forests.

CLIMATE PROTECTION THROUGH REGIONAL PROJECTS

Regional projects protect natural habitats such as native forests and alpine areas, while also contributing towards green agriculture. These projects are important for adapting to climate change. Projects in Germany, Austria and Switzerland generally do not produce certified emission reductions. This is why ClimatePartner combines regional projects with international climate protection projects, as this enables both climate neutrality and regional engagement.



climate neutral 
226,800 KG OF CO² OFFSET



SUSTAINABILITY

ORGANIC COTTON

ORGANIC COTTON COLLECTION - CLOTHES WITH INNER VALUES

Fair, transparent, harmless: The Organic Cotton collection includes a wide range of **sustainably produced** organic cotton clothing for every **fair fashion lover**. The Organic Cotton collection by JAMES & NICHOLSON and myrtle beach impresses with a **high quality** combined with **modern cuts** and **tasteful details**.

The **naturalness** is not only visible but also perceptible. Knowing that the components of the garment are made of **sustainably grown cotton** and that **no genetically modified fibres** are used conveys a completely **new attitude towards life**.

OCS STANDARD

When manufacturing garments of **myrtle beach** and **JAMES & NICHOLSON**, the Organic Content Standard is a standard for verifying and tracking the exact content of organically grown materials in a final product. Among other things, the superordinate 'Content Claim Standard' defines with OCS the traceability of merchandise as well as the transparency within the production chain.



Made with 100%
Organically Grown Cotton
Certified by CU853836



Made with 50%–95%
Organically Grown Cotton
Certified by CU853836



RECYCLED POLYESTER

PET BOTTLES ARE RECYCLED TO CREATE A NEW FASHION.

Plastic bottles collected in the sea are crushed, melted down and spun to yarn again, which is sometimes completely integrated into the production. Thus for producing the workwear cap MB6234 about 3 half-litre bottles are recycled and for the new sport T-shirt JN519 even 25.



for example: plastic bottles



crushing, cleaning, melting



yarn



fabric



product



APPROVED

by **LABTECH** ID123987



ORGANIC COTTON

ORGANIC
COTTON



**ORGANIC WITH
ATTITUDE**

Bio - Baumwolle



8033
Ladies' Lounge Hoody

Stylish hooded sweatshirt, lightly oversized | High-quality sweat fabric, roughened inside | 85% combed, ring-spun organic cotton | 2-layer hood with cord and cord stopper | Sleeve bands with elasthane, tear-off® label
Outer fabric (300 g/m²): 85% cotton, 15% polyester

8034
Men's Lounge Hoody

Stylish hooded sweatshirt, lightly oversized | High-quality sweat fabric, roughened inside | 85% combed, ring-spun organic cotton | 2-layer hood with cord and cord stopper | Sleeve bands with elasthane, tear-off® label
Outer fabric (300 g/m²): 85% cotton, 15% polyester



vanilla

soft-pink ¹

light-blue

navy

soft-grey

graphite

jade-green

¹ Colour not available for 8034

NEW



Made with 85%
Organically Grown Cotton
Certified by CU853836

Tear off!
LABEL



XS S M L XL XXL

S M L XL XXL 3XL

8035 Ladies' Lounge Pants

Trendy sweatpants made of organic cotton | High-quality French Terry | 85% combed, ring-spun organic cotton | Attached, elastic waistband with cord | 2 side pockets, 1 back pocket
Outer fabric (300 g/m²): 85% cotton, 15% polyester

8036 Men's Lounge Pants

Trendy sweatpants made of organic cotton in cargo style | High-quality French Terry | 85% combed, ring-spun organic cotton | Attached, elastic waistband with cord | 2 side pockets, 1 back pocket | 1 cargo pocket with hook and loop fastener on the right leg
Outer fabric (300 g/m²): 85% cotton, 15% polyester



vanilla



navy



graphite



NEW



BIO-BAUMWOLLE
ORGANIC COTTON

8038 Men's Lounge Shorts

Trendy sweatshorts made of organic cotton, in cargo style | High-quality French Terry | 85% combed, ring-spun organic cotton | Attached, elastic waistband with cord | 2 side pockets, 1 back pocket | 1 cargo pocket with hook and loop fastener on the right leg
Outer fabric: 85% cotton, 15% polyester

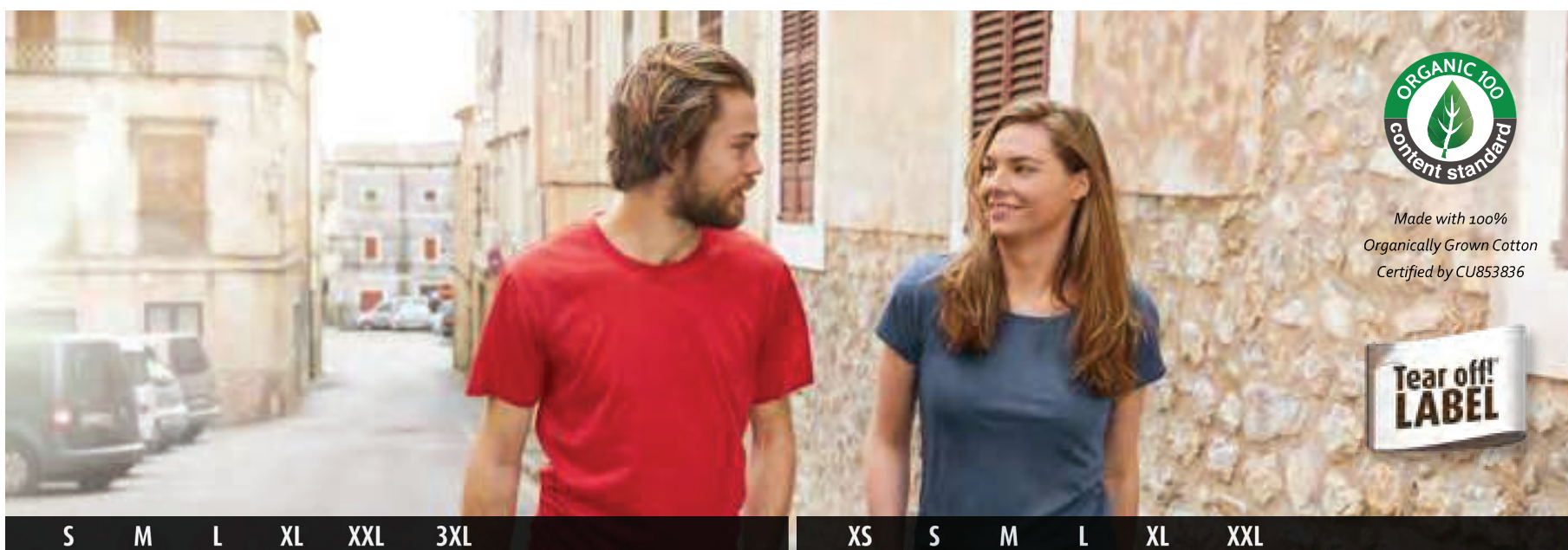


vanilla

navy

graphite





S M L XL XXL 3XL

XS S M L XL XXL

8008 Men's Basic-T

Classic T-shirt for men | 100 % combed ring-spun organic cotton | Single jersey | Round neckline | Sleeve-cuffs with elasthane
Outer fabric (140 g/m²): 100% cotton

8007 Ladies' Basic-T

Ladies' T-shirt in classic form | 100% combed ring-spun organic cotton, Single Jersey | Low cut round neckline | Cuffs with elasthane | Slightly waisted | Tear off!® - Label
Outer fabric (120 g/m²): 100% cotton



white stone light-yellow acid-yellow yellow gold-yellow orange dark-orange soft-pink



pink red tomato carmine-red-melange grenadine wine coral raspberry sky-blue cobalt royal



mint pacific turquoise light-denim-melange petrol dark-royal navy ash natural grey-heather mid-grey



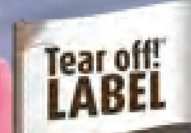
graphite black black-heather steel-grey brown lime-green fern-green irish-green dark-green khaki olive







Made with 100%
Organically Grown Cotton
Certified by CU853836



XS	S	M	L	XL	XXL	XS	S	M	L	XL	XXL
98/104	110/116	122/128	134/140	146/152	158/164	98/104	110/116	122/128	134/140	146/152	158/164

8007G
Girls' Basic-T

Classic T-shirt for girls | 100 % combed ring-spun organic cotton | Single jersey | Round neckline | Sleeve-cuffs with elasthane | Lightly waisted
Tear off!®-label
Outer fabric (140 g/m²): 100% cotton

8008B
Boys' Basic-T



white acid-yellow yellow gold-yellow orange pink red wine sky-blue cobalt



royal pacific turquoise dark-royal navy graphite black lime-green fern-green irish-green







Made with 100%
Organically Grown Cotton
Certified by CU853836



S M L XL XXL 3XL

XS S M L XL XXL

8002
Men's-T

Men's T-shirt with trendy roll hem | 100% combed ring-spun organic cotton, Single Jersey | Round neckline and sleeves with roll hem

Tear off!®-Label

Outer fabric (140 g/m²): 100% cotton



white

red



navy

grey-heather

black

8001
Ladies'-T

Ladies' T-shirt with trendy roll hem | 100% organic combed ring-spun cotton, Single Jersey | Low cut round neckline and sleeves with roll hem

Slightly waisted | Tear off!® - Label

Outer fabric (120 g/m²): 100% cotton



white

red



navy

grey-heather

black





S M L XL XXL 3XL

XS S M L XL XXL

8004
Men's-T Pocket

Men's T-shirt with fashionable breast pocket | 100% combed ring-spun organic cotton, Single Jersey | V-neck with small cuffs | Cuffs with elasthane | Breast pocket with roll hem
Outer fabric (140 g/m²): 100% cotton



white red



navy black black-heather

8003
Ladies'-T Pocket

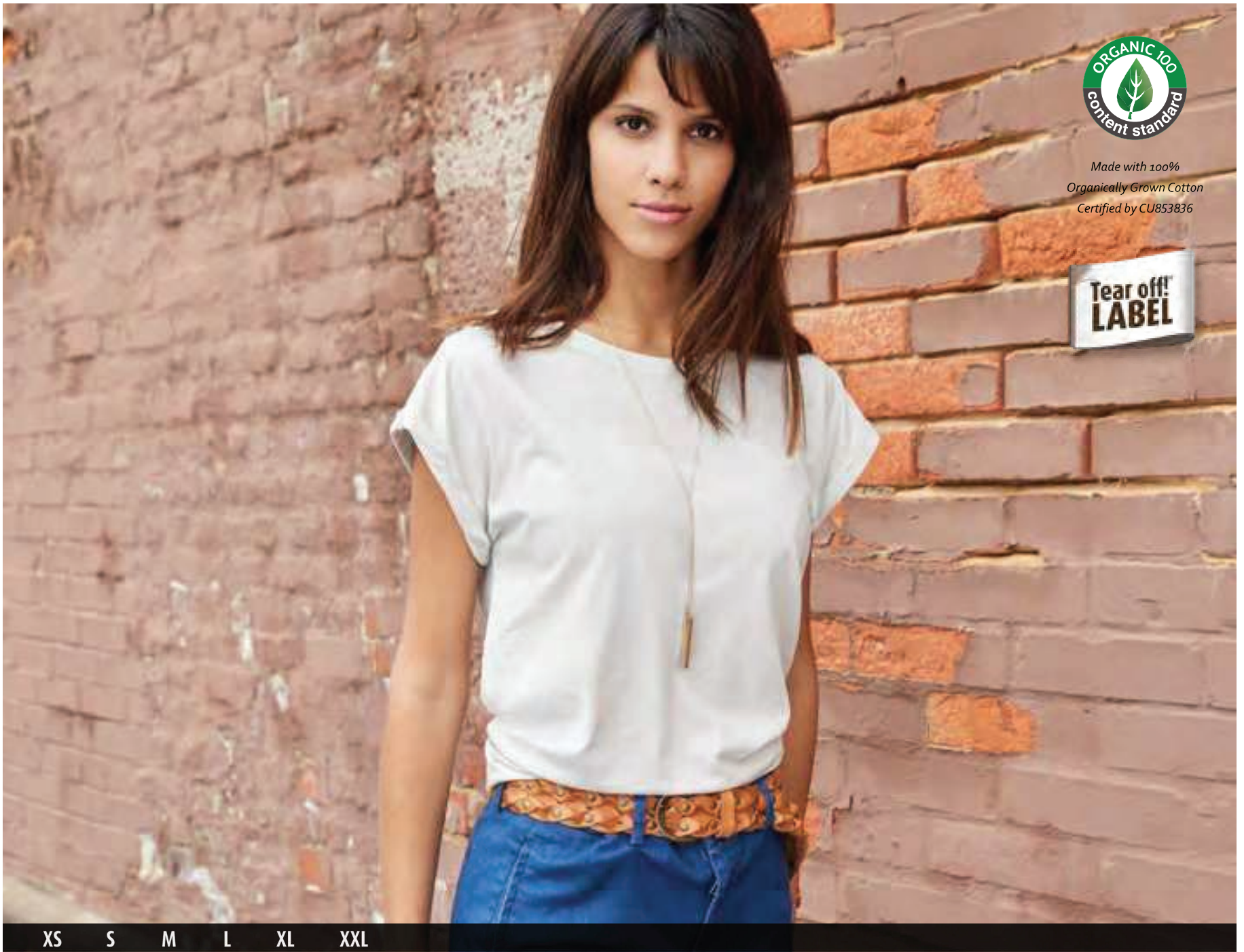
Ladies' T-shirt with fashionable breast pocket | 100% combed ring-spun organic cotton, Single jersey | Low cut round neckline | Cuffs with elasthane | Breast pocket with roll hem
Outer fabric (120 g/m²): 100% cotton



white red



navy black black-heather



8005 Ladies' Casual-T

Ladies' T-shirt in casual style | 100% combed ring-spun organic cotton, Single Jersey | Low cut round neckline | Cuffs with elasthane | Overcut shoulder | Short roll-up sleeves | Casual fit | Tear off!® - Label
Outer fabric (120 g/m²): 100% cotton



white

soft-pink



soft-grey

black

soft-green



Made with 100%
Organically Grown Cotton
Certified by CU853836

XS S M L XL XXL

8017 Ladies' Slub-Top

Ladies' tank top in vintage look | Single jersey made of slub yarn and combed ring-spun organic cotton | Elaborate Spray Print technique
Two-ply roll hem | Narrow bands on neckline and armlines | Lightly waisted
Outer fabric (130 g/m²): 100% cotton



soft-pink chili horizon-blue



denim light-grey graphite dusty-olive





XS S M L XL XXL

S M L XL XXL 3XL

8015
Ladies' Slub-T

Ladies' T-shirt in vintage look | Single jersey made of slub yarn and combed ring-spun organic cotton | Elaborate Spray Print technique | Two-ply roll edge on neckline, sleeves and waistband
Outer fabric (130 g/m²): 100% cotton

8016
Men's Slub-T

Men's T-shirt in vintage look | Single jersey made of slub yarn and combed ring-spun organic cotton | Elaborate Spray Print technique | V-neck, sleeve-cuffs with elasthan
Outer fabric (150 g/m²): 100% cotton



soft-pink chili horizon-blue



soft-pink chili horizon-blue



denim light-grey graphite dusty-olive



denim light-grey graphite dusty-olive



XS S M L XL XXL 3XL 4XL 5XL 6XL

XS S M L XL XXL 3XL 4XL

JN1802
Men's BIO Stretch-T Work - SOLID -

JN1801
Ladies' BIO Stretch-T Work - SOLID -

T-shirt made of soft elastic single jersey | Combed ring-spun organic cotton, round neckline | Neck band with elasthane, neck tape | Washable at 40°C, suitable for tumble drying | JN1801: lightly waisted
Outer fabric (180 g/m²): 95% cotton, 5% elastane | Outer fabric (180 g/m²): 85% cotton, 10% viscose, 5% elastane (grey-heather)



white red royal turquoise navy



grey-heather carbon black lime-green dark-green olive



grey-heather



Made with 95%
Organically Grown Cotton
Certified by CU853836



JN1804
Men's BIO Stretch-Longsleeve
Work - SOLID -

JN1803
Ladies' BIO Stretch-Longsleeve Work
- SOLID -

Long-sleeved T-shirt made of soft elastic single jersey | Combed ring-spun organic cotton, round neckline | Neck band with elasthane, neck tape | Washable at 40°C, suitable for tumble drying | JN1803: lightly waisted
Outer fabric (180 g/m²): 95% cotton, 5% elastane | Outer fabric (180 g/m²): 85% cotton, 10% viscose, 5% elastane (grey-heather)



white red royal turquoise navy



grey-heather carbon black lime-green dark-green olive



carbon





Made with 50%
Organically Grown Cotton
Certified by CU853836



XS S M L XL XXL 3XL 4XL XS S M L XL XXL 3XL 4XL 5XL 6XL

JN1823
Ladies' Workwear T-Shirt - STRONG -

Durable, easy care T-shirt with contrasting insets | Material mix of combed, ring-spun organic cotton and recycled polyester for optimum shape retention and washing resistance | Contrasting insets on the side and shoulder | Neck band with elasthane, neck tape | Washable at 60°C, suitable for tumble-drying | JN1823: lightly waisted
Outer fabric (180 g/m²): 50% cotton, 50% polyester (recycled)

JN1824
Men's Workwear T-Shirt - STRONG -

Durable, easy care T-shirt with contrasting insets | Material mix of combed, ring-spun organic cotton and recycled polyester for optimum shape retention and washing resistance | Contrasting insets on the side and shoulder | Neck band with elasthane, neck tape | Washable at 60°C, suitable for tumble-drying | JN1823: lightly waisted
Outer fabric (180 g/m²): 50% cotton, 50% polyester (recycled)



white/carbon stone/black red/black royal/navy



navy/navy carbon/black black/carbon dark-green/black

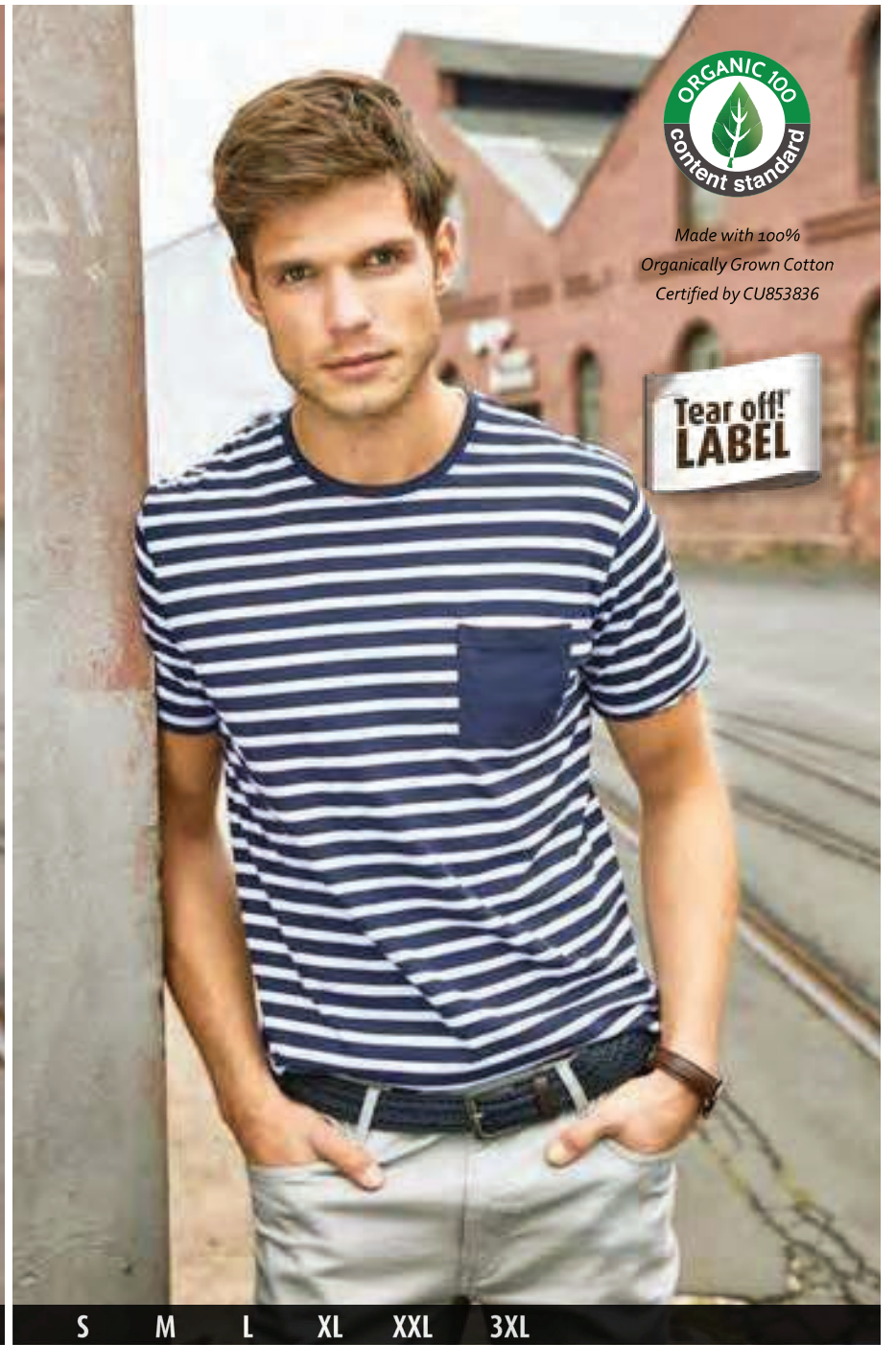


red/black





XS S M L XL XXL



S M L XL XXL 3XL

**8027
Ladies' T-Shirt Striped**

T-shirt in maritime look with breast pocket | 100 % combed, ring-spun organic cotton, single jersey, round neck | Two-ply rolled hem on sleeves and waistband | Neckband with elastane | 8027: lightly waisted | Tear off®-label
Outer fabric (140 g/m²): 100% cotton

**8028
Men's T-Shirt Striped**



white/navy red/white



white/navy red/white



atlantic/white navy/white



atlantic/white navy/white



S M L XL XXL 3XL

XS S M L XL XXL

8030 Men's Polo Striped

Polo shirt in maritime look with breast pocket | Fine piqué quality made of 100% combed, ring-spun organic cotton | Knitted polo collar | Sleeve cuffs, breast pocket, buttons and button-placket on the inside in contrasting colour | Side slits | 8029: waisted form, 5 buttons | 8030: 3 buttons
Outer fabric (180 g/m²): 100% cotton

8029 Ladies' Polo Striped



white/navy

red/white



white/navy

red/white



atlantic/white

navy/white



atlantic/white

navy/white



Made with 100%
Organically Grown Cotton
Certified by CU853836

Tear off!
LABEL

S M L XL XXL 3XL

S M L XL XXL

**8010
Men's Basic Polo**

**8009
Ladies' Basic Polo**

Classic poloshirt | Fine piqué made of 100% combed ring-spun organic cotton | Knitted polo collar and sleeve cuffs | Buttons tone in tone, side slits
Tear off!®-label | 8009: waisted, 4 buttons | 8010: 2 buttons
Outer fabric (180 g/m²): 100% cotton



white stone light-yellow orange dark-orange pink red



carmine-red-melange wine cobalt royal turquoise light-denim-melange navy natural



grey-heather graphite black black-heather brown lime-green fern-green irish-green






 Made with 94%
 Organically Grown Cotton
 Certified by CU853836



XS S M L XL XXL 3XL 4XL 5XL 6XL XS S M L XL XXL 3XL 4XL

JN1806
Men's BIO Stretch-Polo Work - SOLID -

JN1805
Ladies' BIO Stretch-Polo Work - SOLID -

Polo shirt made of soft elastic piqué | Combed ring-spun organic cotton | Knitted polo collar and sleeve-bands, side slits | Washable at 40°C, suitable for tumble drying | JN1805: button placket with 4 buttons, lightly waisted | JN1806: button placket with 3 buttons
 Outer fabric (210 g/m²): 94% cotton, 6% elastane | Outer fabric (210 g/m²): 84% cotton, 10% viscose, 6% elastane (grey-heather)





Made with 50%
Organically Grown Cotton
Certified by CU853836



XS S M L XL XXL 3XL 4XL XS S M L XL XXL 3XL 4XL 5XL 6XL

JN1825
Ladies' Workwear Polo - STRONG -

JN1826
Men's Workwear Polo - STRONG -

Durable, easy care polo shirt with contrasting insets | Material mix of combed, ring-spun organic cotton and recycled polyester for optimum shape retention and washing resistance | Contrasting insets on the side and shoulder | Knitted polo collar, neck tape | JN1826: Button placket with 3 buttons | JN1825: Button placket with 4 buttons | Washable at 60°C, suitable for tumble-drying
Outer fabric (200 g/m²): 50% cotton, 50% polyester (recycled)



white/carbon

stone/black

red/black

royal/navy

navy/navy

carbon/black

black/carbon

dark-green/black

navy/navy







S M L XL XXL 3XL 4XL 5XL

XS S M L XL XXL 3XL

8022
Men's Sweat

8021
Ladies' Sweat

Classic sweatshirt with raglan sleeves | High-quality French terry, 85% combed, ring-spun organic cotton | Classic round neck, necktape | Collar and sleeve-bands with elasthane | Collar patch | Tear off!-label | 8021: lightly waisted
Outer fabric (300 g/m²): 85% cotton, 15% polyester



white acid-yellow orange rose-melange red



carmine-red-melange burgundy-melange wine glacier-melange cobalt royal-heather



turquoise light-denim-melange petrol-melange navy ink-melange ash



grey-heather graphite black black-heather lime-green olive



ink-melange



**8024
Men's Hoody**

**8023
Ladies' Hoody**

Hooded sweatshirt with raglan sleeves | High-quality sweat fabric with roughened inside | 85% combed, ring-spun organic cotton | Two-layer hood with drawcord | Lateral dividing seams at the front, kangaroo pocket | Sleeve-bands with elasthane | Tear off!@-label | 8023: lightly waisted
Outer fabric (300 g/m²): 85% cotton, 15% polyester



white acid-yellow orange rose-melange red



carmine-red-melange burgundy-melange wine glacier-melange cobalt royal-heather



turquoise light-denim-melange petrol-melange navy ink-melange ash



grey-heather graphite black black-heather lime-green olive



glacier-melange



S M L XL XXL 3XL 4XL 5XL



XS S M L XL XXL 3XL



XS S M L XL XXL
98/104 110/116 122/128 134/140 146/152 158/164

8026
Men's Zip Hoody

8025
Ladies' Zip Hoody

8026K
Children's Zip Hoody

Hooded sweat jacket with zip | High-quality French terry | 85% combed, ring-spun organic cotton | Two-layer hood with drawcord | Lateral dividing seams at the front, kangaroo pocket | Sleeve-bands with elasthane | YKK-zip | Tear off!®-label | 8025: lightly waisted
Outer fabric (300 g/m²): 85% cotton, 15% polyester



white acid-yellow orange rose-melange red carmine-red-melange burgundy-melange wine glacier-melange cobalt royal-heather



turquoise light-denim-melange petrol-melange navy ink-melange ash grey-heather graphite black black-heather lime-green olive



**8031
Bio Sneaker Socks**

Classic short socks with a high content of organic cotton | Elastic cuff with Lycra® | Flat toe seam | Reinforced toe and heel part
Outer fabric: 75% cotton, 23% polyamide, 2% elastane

**8032
Bio Socks**

Classic socks with a high content of organic cotton | Elastic cuff with Lycra® | Flat toe seam | Reinforced toe and heel part
Outer fabric: 75% cotton, 23% polyamide, 2% elastane



white navy black



white navy black





SWEAT & FLEECE
FLEECE

XS S M L XL XXL 3XL 4XL XS S M L XL XXL 3XL 4XL 5XL 6XL

JN1817 Ladies' Structure Fleece Jacket

JN1818 Men's Structure Fleece Jacket

Easy-care knitted fleece jacket for work and leisure time | Soft, warm, easy-care fabric in melange look | Outside smooth, textured look | Inside soft and fluffy, roughened | 2 side pockets with concealed zip, 2 inner pockets | Breast pocket made of woven fabric with contrasting zip | Contrasting seams | Stand-up collar | Full-length concealed zip with chin cup | Zips: YKK | JN1817: lightly waisted
Outer fabric (230 g/m²): 80% polyester (recycled), 20% polyester



navy-melange/navy/royal

carbon-melange/black/red

black-melange/black/silver



navy-melange/navy/royal





NEW



XS S M L XL XXL S M L XL XXL 3XL

JACKETS & VESTS
BUSINESS / WIND AND RAIN

**JN1175
Ladies' Business Parka**

Classic padded parka with attached hood | Wind-and waterproof outer fabric (5,000 mm water column) | Breathable and permeable to water vapour (2,000/m²/24 h) | DuPont™ Sorona®-padding (renewable , vegetable raw material) | Attached, adjustable and padded hood | Elastic cord for waist adjustment inside | Full-length concealed 2-way front zip | Storm flap with press studs | 6 pockets at the front, 2 zipped pockets | Zipped inner pocket | elastic sleeve bands inside
Outer fabric: 96% polyester (recycled), 4% elastane | Lining: 100% polyester (recycled) | Padding: 100% polyester

**JN1176
Men's Business Parka**

Classic, padded parka with attached hood | Wind-and waterproof outer fabric (5,000 mm water column) | Breathable and permeable to water vapour (2,000/m²/24 h) | DuPont™ Sorona®-padding (renewable , vegetable raw material) | Attached, adjustable and padded hood | Full-length concealed 2-way front zip | Storm flap with press studs | 4 pockets at the front, zipped inner pocket | Large inner pocket with hook and loop fastener
Outer fabric: 96% polyester (recycled), 4% elastane | Lining: 100% polyester (recycled) | Padding: 100% polyester



navy



black



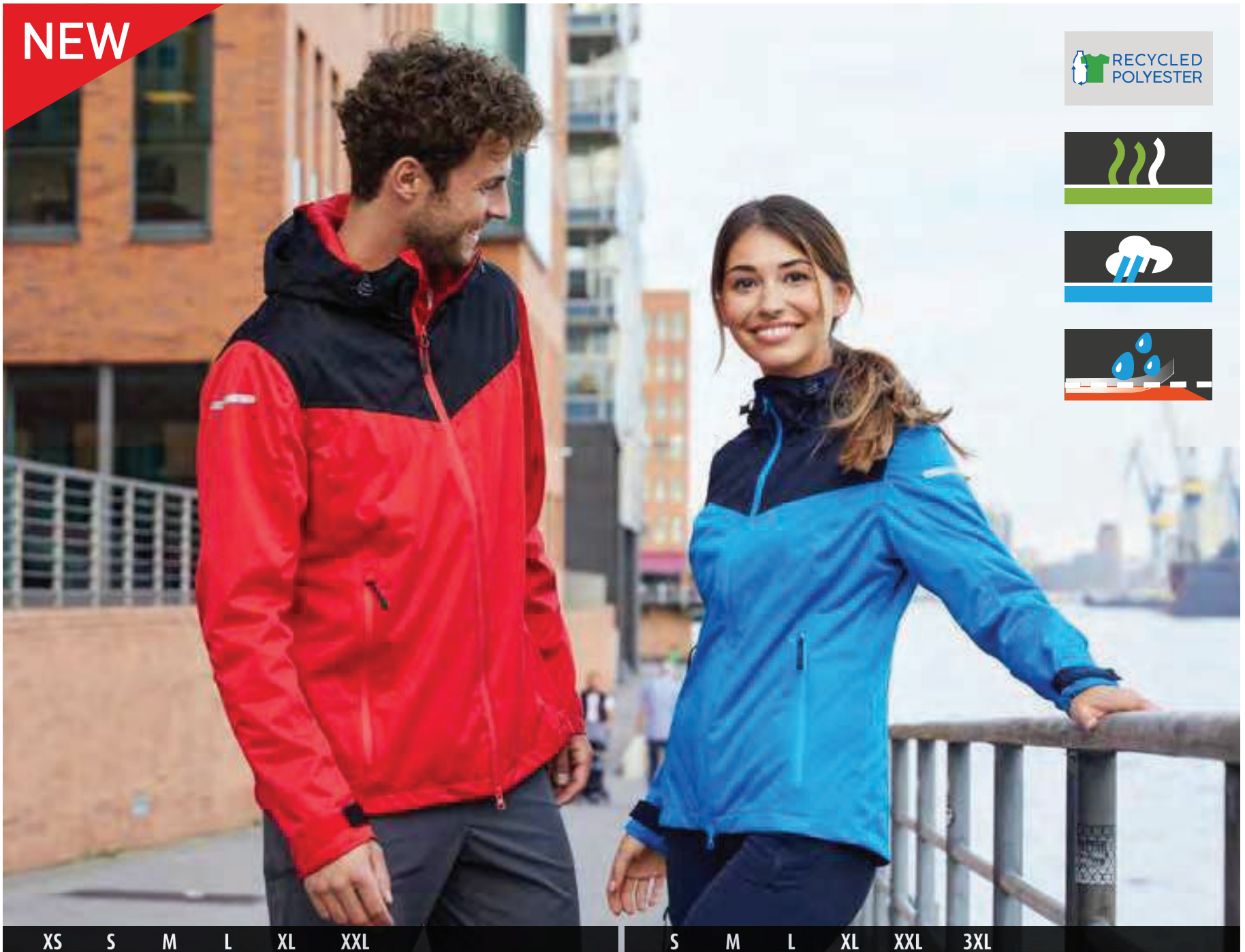
olive-green



olive-green



NEW



RECYCLED POLYESTER



XS S M L XL XXL

S M L XL XXL 3XL

**JN1179
Ladies' Allweather Jacket**

**JN1180
Men's Allweather Jacket**

Light, lined outdoor softshell-jacket for extreme weather conditions | Functional material made of recycled polyester with TPU-membrane | Wind- and waterproof (10,000 mm water column) | Breathable and permeable to water vapour (5,000 g/m²/24 h) | Taped seams, waterproof zips | Light mesh | Full-length concealed 2-way zip with chin protection | 2 side pockets, 1 inner pocket | Fully adjustable hood | Hook and loop fastener for width adjustment on sleeves | Ergonomic fit, extended back section | Fashionable reflective details on the sleeves and at the back | Zip for decoration at the back | JN1179: Lightly waisted | Zips: YKK
Outer fabric (140 g/m²): 100% polyester (recycled) | Lining: 100% polyester (recycled)



light-red/black/
light-red

bright-blue/navy/
bright-blue

navy



carbon/bright-
yellow/carbon

black

black/carbon/
light-red



bright-blue/navy/bright-blue





**JN1167
Ladies' Padded Jacket**

**JN1168
Men's Padded Jacket**

Padded winter jacket made of DuPont™ Sorona® padding | Ripp-stop fabric, | Water- and dirt-repellent through BIONIC-FINISH® ECO | Lining in contrasting colour | Adjustable hood | Elastic inner sleeve bands | 2-way zip | Full-length storm flap with chin cup | 2 zipped side pockets, 1 inner pocket | Width adjustment on hem | Zips: YKK | JN1167: lightly waisted
 Outer fabric: 100% polyester (recycled) | Lining: 100% polyester (recycled) | Padding: 100% polyester



red/black

electric-blue/nautic



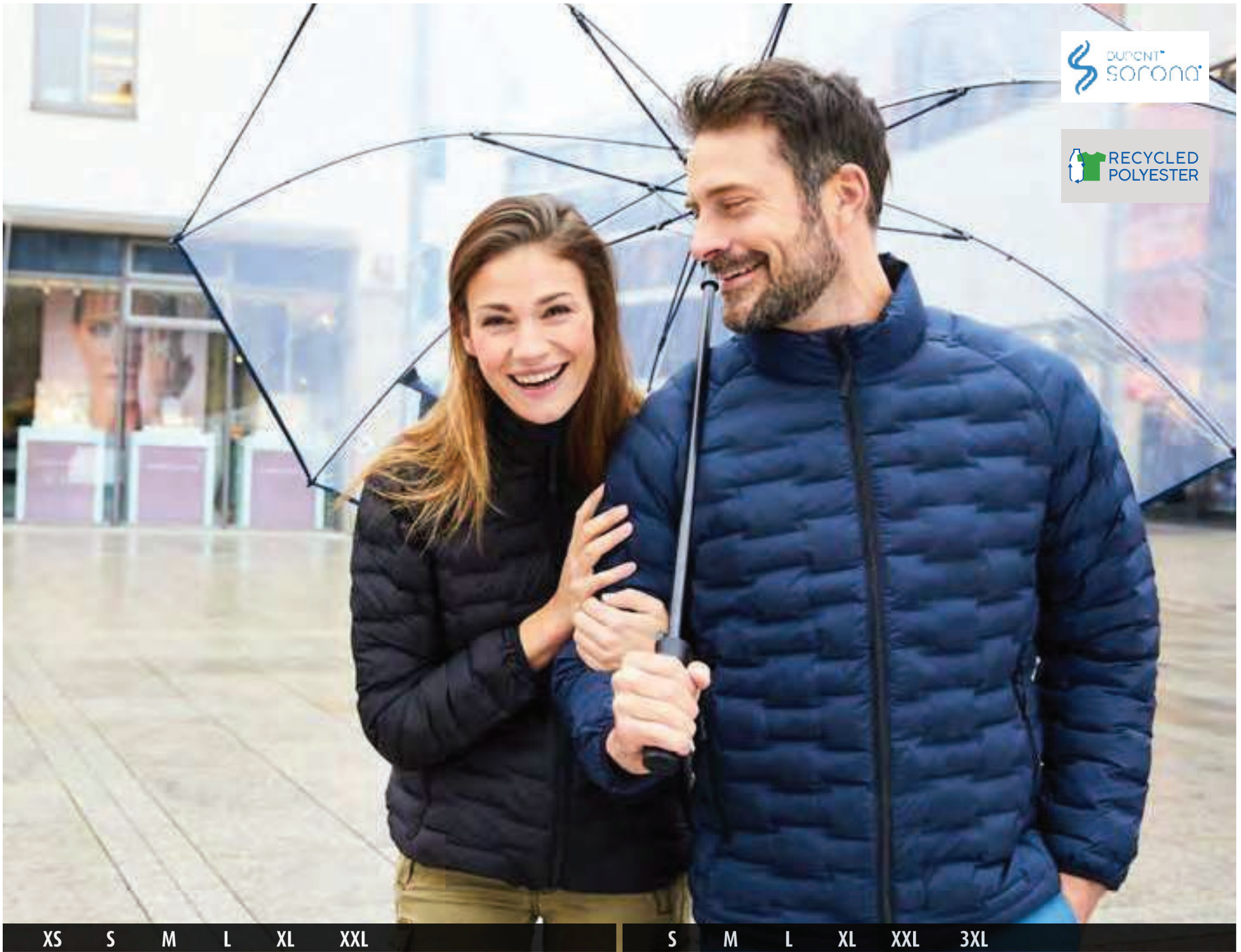
navy/electric-blue

black/red

deep-forest/yellow



electric-blue/nautic



JACKETS & VESTS
FOR COLD DAYS

JN1161
Ladies' Modern Padded Jacket

Light, fashionable padded jacket made of recycled polyester | Two-surface woven fabric with DuPont™ Sorona® padding | Sporty cut with raglan sleeves | Stand-up collar | 2 zipped side pockets, 2 inner pockets | Full-length storm flap with chin cup | Elastic cord on hem for width adjustment | Zips: YKK
Outer fabric: 100% polyester (recycled) | Padding: 100% polyester

JN1162
Men's Modern Padded Jacket



navy-matt

black-matt



black-matt





XS S M L XL XXL 3XL 4XL 5XL 6XL

**JN1814
Hardshell Workwear Jacket**

Professional, wind- and waterproof, breathable work jacket for extreme weather conditions | Durable and sturdy rip-stop fabric made of recycled polyester, wind- and waterproof (10,000 mm water column), breathable and permeable to water vapour (5,000 g/m²/24h), sealed seams | Stand-up collar | Detachable, width- and length-adjustable hood | Width-adjustment on hem | Inner sleeve bands | Extended back | Full-length concealed waterproof 2-way zip with storm flap | and chin cup | Side pockets and breast pocket with waterproof zip, 1 zipped | inner pocket, 1 inner pocket with hook-and-loop fastener | Reflective elements (without protective function / no PPE)
Outer fabric: 100% polyester (recycled) | Lining: 100% polyester (recycled)



navy/carbon

carbon/black

black/carbon

black/black



black/carbon





JN1815 Padded Hardshell Workwear Jacket

Professional, padded, wind- and waterproof, breathable work jacket for extreme weather conditions | Warm DuPont™ Sorona® padding | Durable and sturdy rip-stop fabric made of recycled polyester, wind- and waterproof (10,000 mm water column), breathable and permeable to water vapour (5,000 g/m²/24h), sealed seams | Stand-up collar | Detachable, width- and length-adjustable hood | Width-adjustment on hem | Inner sleeve bands | Extended back | Full-length concealed waterproof 2-way zip with storm flap | and chin cup | Side pockets and breast pocket with waterproof zip, 1 zipped | inner pocket, 1 inner pocket with hook-and-loop fastener | Reflective elements (without protective function / no PPE) at the back and on the sleeves | Zip for decoration at the back

Outer fabric: 100% polyester (recycled) | Lining: 100% polyester (recycled) | Padding: 100% polyester



navy/carbon

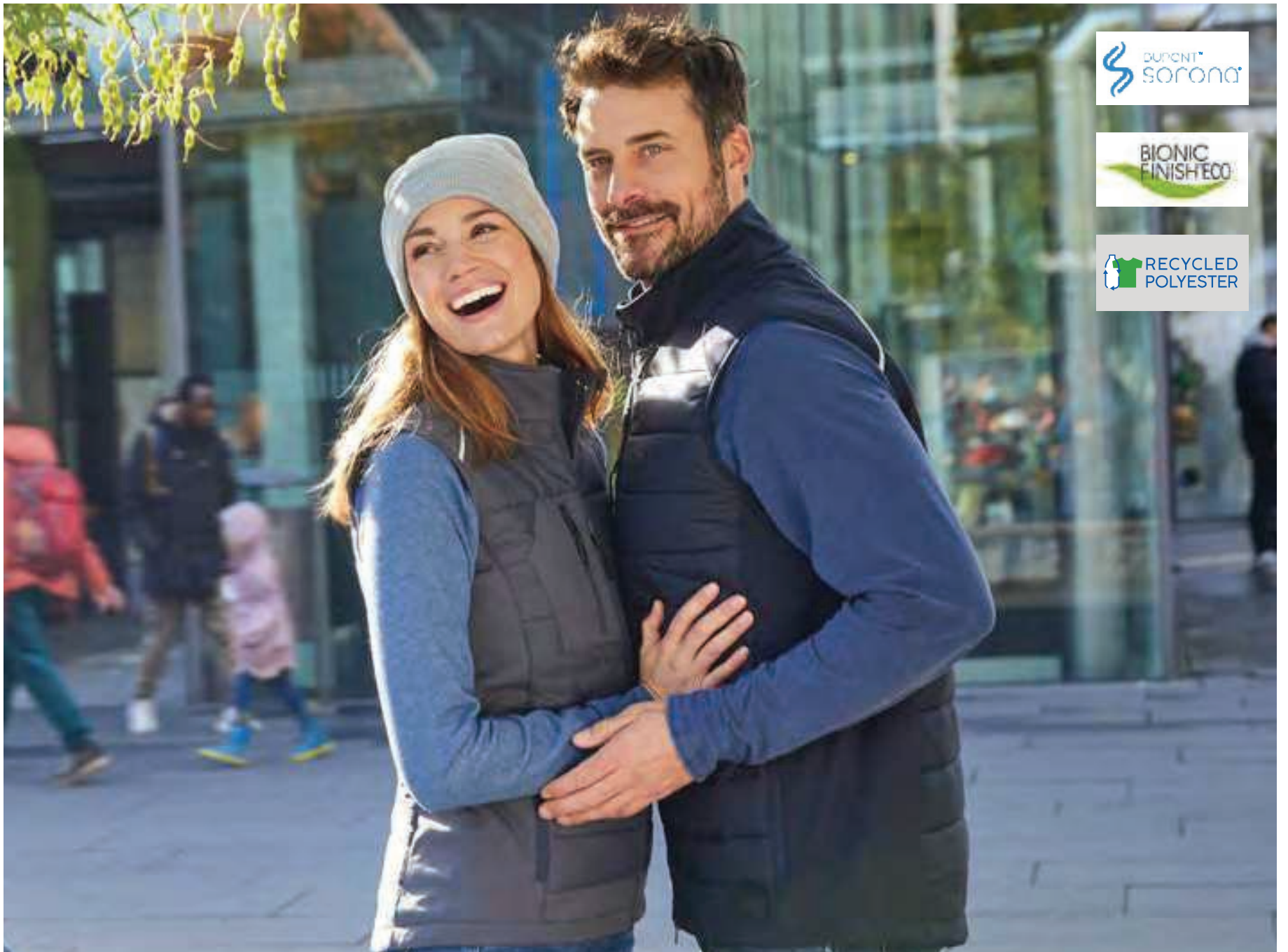
carbon/black

black/carbon

black/black



carbon/black



XS S M L XL XXL 3XL 4XL XS S M L XL XXL 3XL 4XL 5XL 6XL

JN1821 Ladies' Hybrid Vest

Softshell vest of attractive mixed materials | Easy-care 2-layer softshell fabric combined with stitched insets at the front and at the back | Water- and dirt-repellent due to BIONIC-FINISH®ECO | Warm Du-Pont™ Sorona® padding | Stand-up collar | Full-length concealed 2-way zip with storm flap and chin cup | Width adjustment on hem | Zipped side pockets and breast pocket, 1 inner pocket with hook-and-loop fastener | Reflective elements (without protective function, no PPE) at the front and at the back | Zip for decoration at the back | Zips: YKK | JN1821: lightly waisted
 Outer fabric (280 g/m²): 100% polyester (recycled) | Outer fabric 2: 100% polyester (recycled) | Lining: 100% polyester (recycled) | Padding: 100% polyester

JN1822 Men's Hybrid Vest

Softshell vest of attractive mixed materials | Easy-care 2-layer softshell fabric combined with stitched insets at the front and at the back. | Water- and dirt-repellent due to BIONIC-FINISH®ECO | Warm Du-Pont™ Sorona® padding | Stand-up collar | Full-length concealed 2-way zip with storm flap and chin cup | Width adjustment on hem | Zipped side pockets and breast pocket, 1 inner pocket with hook-and-loop fastener | Reflective elements (without protective function, no PPE) at the front and at the back | Zip for decoration at the back | Zips: YKK | JN1821: lightly waisted
 Outer fabric (280 g/m²): 100% polyester (recycled) | Outer fabric 2: 100% polyester (recycled) | Lining: 100% polyester (recycled) | Padding: 100% polyester



navy/navy



carbon/carbon



black/neon-yellow



black/neon-orange



black/black





JACKETS & VESTS
HYBRID

JN1819 Ladies' Hybrid Jacket

Softshell jacket of attractive mixed materials | Easy-care 2-layer softshell fabric combined with stitched insets at the front and at the back | Water- and dirt-repellent due to BIONIC-FINISH@ECO | Warm DuPont™ Sorona® padding | Stand-up collar | Full-length concealed 2-way zip with storm flap and chin cup | Width adjustment on hem | Zipped side pockets and breast pocket, 1 inner pocket with hook-and-loop fastener | Reflective elements (without protective function, no PPE) at the front and at the back | Zip for decoration at the back | Zips: YKK | JN1819: lightly waisted
Outer fabric (280 g/m²): 100% polyester (recycled) | Outer fabric 2: 100% polyester (recycled) | Lining: 100% polyester (recycled) | Padding: 100% polyester

JN1820 Men's Hybrid Jacket

Softshell jacket of attractive mixed materials | Easy-care 2-layer softshell fabric combined with stitched insets at the front and at the back. | Water- and dirt-repellent due to BIONIC-FINISH@ECO | Warm DuPont™ Sorona® padding | Stand-up collar | Full-length concealed 2-way zip with storm flap and chin cup | Width adjustment on hem | Zipped side pockets and breast pocket, 1 inner pocket with hook-and-loop fastener | Reflective elements (without protective function, no PPE) at the front and at the back | Zip for decoration at the back | Zips: YKK | JN1819: lightly waisted
Outer fabric (280 g/m²): 100% polyester (recycled) | Outer fabric 2: 100% polyester (recycled) | Lining: 100% polyester (recycled) | Padding: 100% polyester



navy/navy

carbon/carbon

black/neon-yellow

black/neon-orange

black/black





XS S M L XL XXL

JN1169 Ladies' Softshell Vest

Classic softshell vest in sporty design made of recycled polyester | Pleasantly soft 3-layer function material with TPU-membrane | Wind- and waterproof (5,000 mm water column), breathable | and permeable to water vapour | Seams not sealed | Inside made of micro fleece, mesh lining in the front | Stand-up collar | 2 side pockets and 1 breast pocket with zips | Full-length concealed 2-way zip with chin cup | Elastic cord on hem for width-adjustment | Zip for decoration at the front | Zips: YKK
Outer fabric (290 g/m²): 100% polyester (recycled)



S M L XL XXL 3XL

JN1170 Men's Softshell Vest

Classic softshell vest in sporty design made of recycled polyester | Pleasantly soft 3-layer function material with TPU-membrane | Wind- and waterproof (5,000 mm water column), breathable and permeable to water vapour | Seams not sealed | Inside made of micro fleece, mesh lining in the front | Stand-up collar | 2 side pockets and 1 breast pocket with zips | Full-length concealed 2-way zip with chin cup | Elastic cord on hem for width-adjustment | Zip for decoration at the front | Zips: YKK | JN1169: lightly waisted
Outer fabric (290 g/m²): 100% polyester (recycled)



red

nautic-blue

navy

graphite

black

brown



nautic-blue



SOFT SHELL

RECYCLED POLYESTER



XS S M L XL XXL S M L XL XXL 3XL

**JN1171
Ladies' Softshell Jacket**

**JN1172
Men's Softshell Jacket**

Classic softshell jacket in sporty design made of recycled polyester | Pleasantly soft 3-layer function material with TPU-membrane | Wind- and waterproof (5,000 mm water column), breathable | and permeable to water vapour | Seams not sealed | Inside made of micro fleece, mesh lining in the front | Stand-up collar | 2 side pockets and 1 breast pocket with zips | Full-length concealed 2-way zip with chin cup | Elastic cord on hem for width-adjustment | Zip for decoration at the front | Zips: YKK | JN1171: lightly waisted
Outer fabric (290 g/m²): 100% polyester (recycled)



red

nautic-blue

navy



graphite

black

brown



red





**JN521
Ladies' Sports Shirt Long-Sleeved**

**JN522
Men's Sports Shirt Long-Sleeved**

Long-sleeved functional T-shirt made of recycled polyester for sports and fitness | Breathable and moisture-regulating | Quick-drying, light and comfortable | Raglan sleeves, round neck | Lightly textured back | Fashionable, reflective print on the shoulder | JN521: lightly waisted
Outer fabric (160 g/m²): 92% polyester (recycled), 8% elastane | Outer fabric 2 (140 g/m²): 100% polyester (recycled)

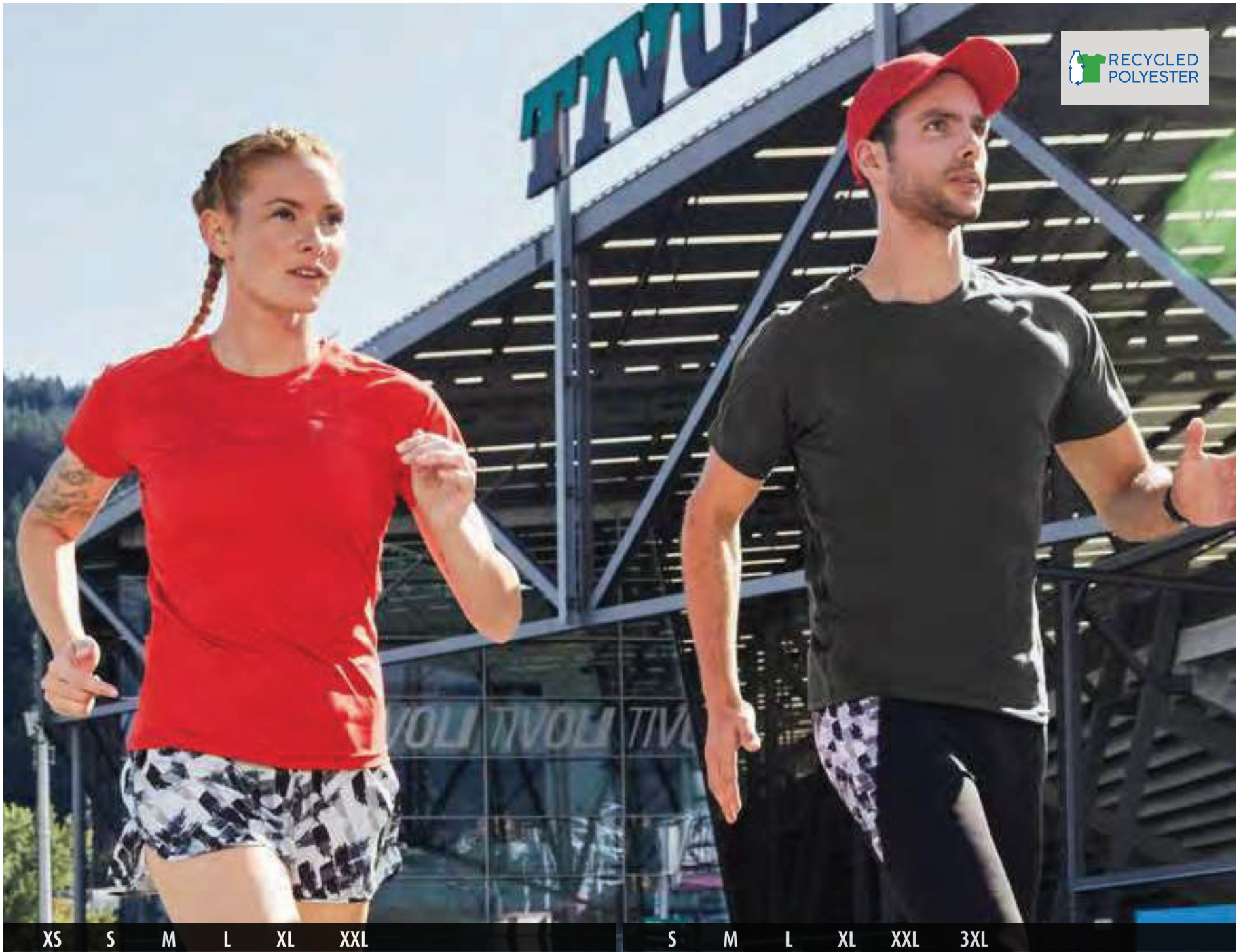


white

bright-red

black

titan



RECYCLED POLYESTER

XS S M L XL XXL

S M L XL XXL 3XL

JN519
Ladies' Sports-T

JN520
Men's Sports-T

Functional T-shirt made of recycled polyester for sports and fitness | Breathable and moisture-regulating | Quick-drying, light and comfortable | Raglan sleeves, round neck | Lightly textured back | Fashionable, reflective print on the shoulder | JN519: lightly waisted
Outer fabric (160 g/m²): 92% polyester (recycled), 8% elastane | Outer fabric 2 (140 g/m²): 100% polyester (recycled)

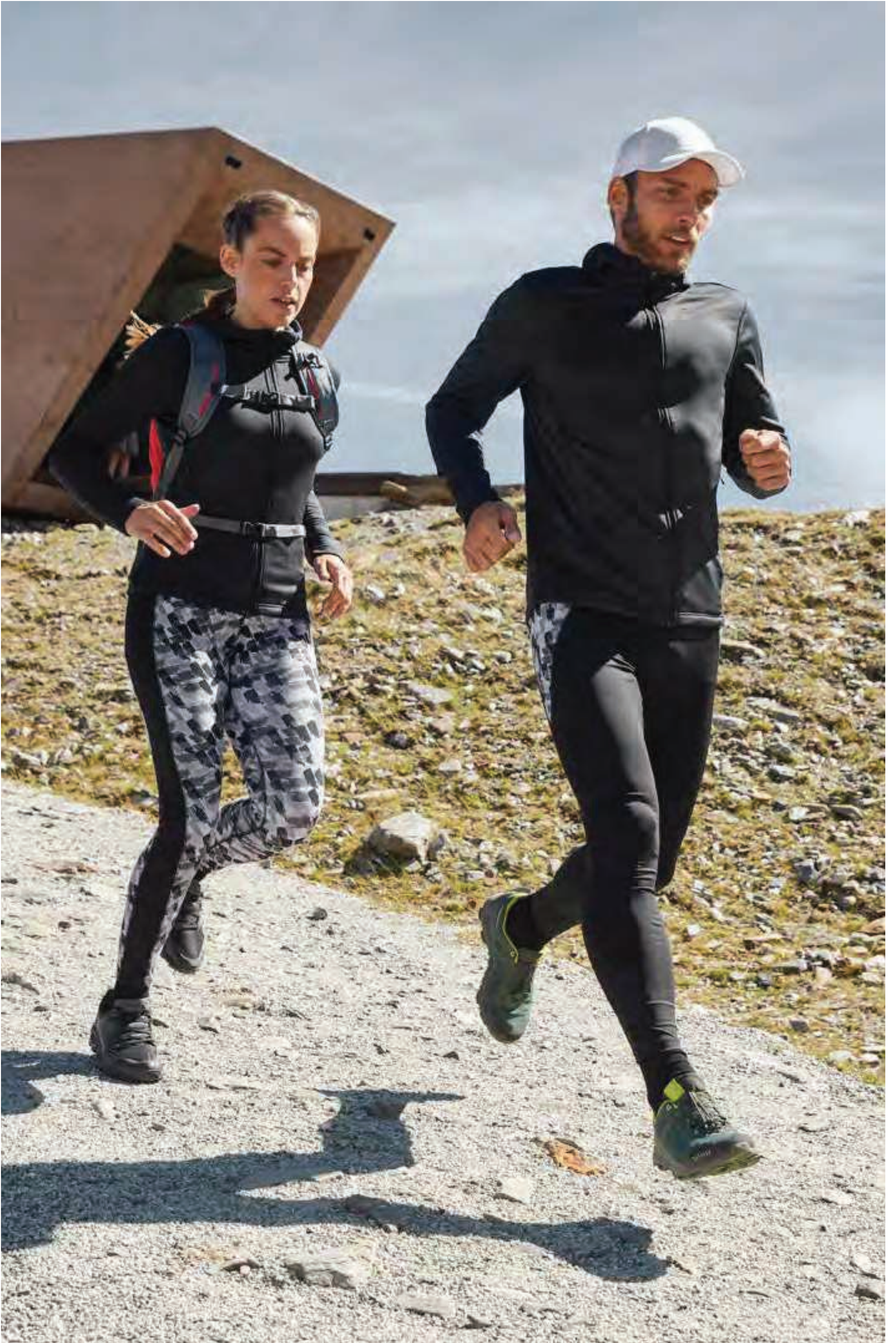


white

bright-red

black

titan





JN531
Ladies' Sports Zip Hoody

Fashionable hooded jacket made of 100% recycled polyester for sports and leisure | Easy-care French terry | Adjustable hood | 2 zipped side pockets | 2 inner pockets | YKK zips | JN531: lightly waisted
 Outer fabric (240 g/m²): 100% polyester (recycled)

JN532
Men's Sports Zip Hoody

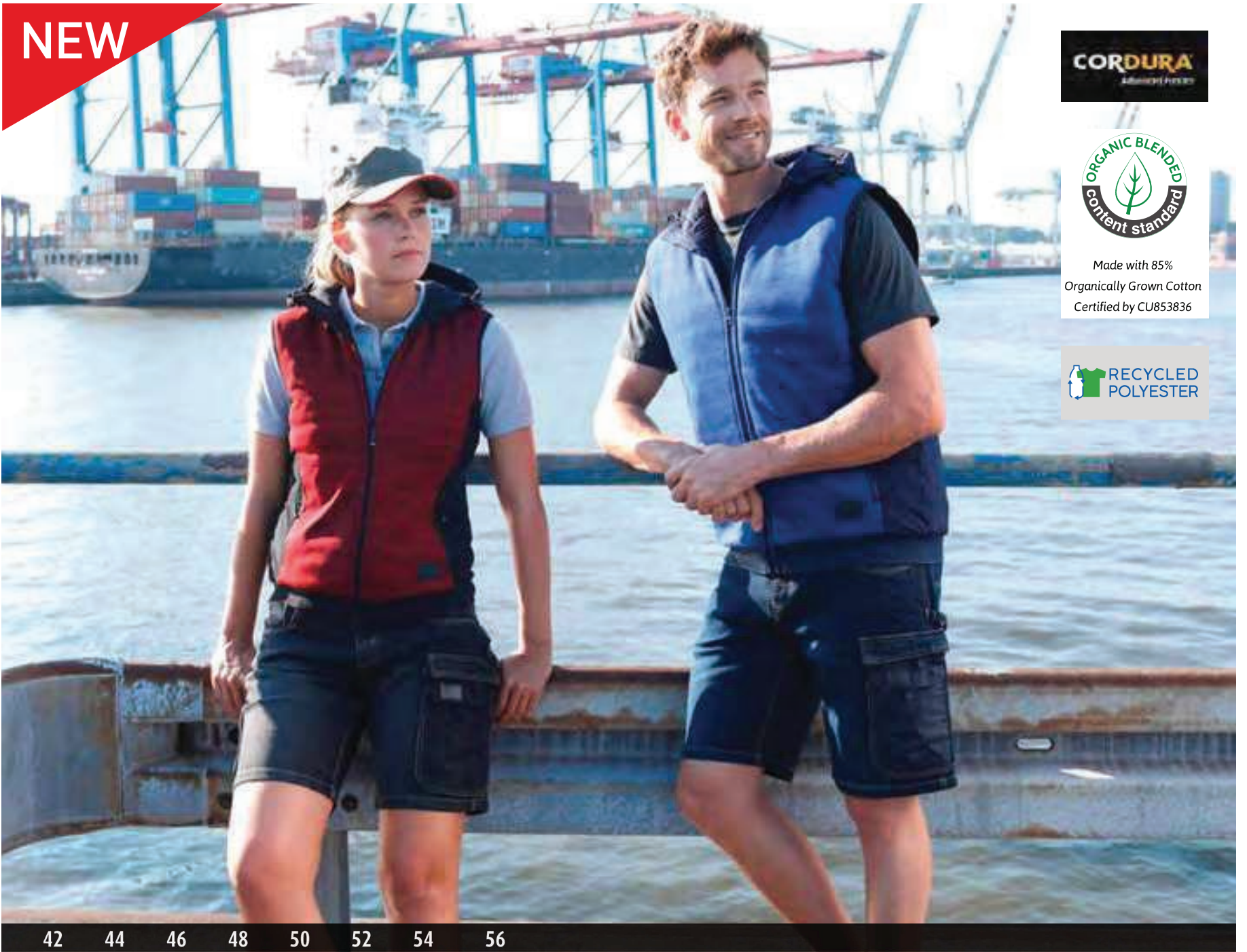


light-melange

dark-melange

black

NEW



Made with 85%
Organically Grown Cotton
Certified by CU853836



42 44 46 48 50 52 54 56

JN871 Workwear Stretch-Bermuda-Jeans

Jeans shorts with plenty of details | Durable denim made of organic cotton and recycled polyester with elasthane, Comfortable | Waistband with belt loops | Tearproof triple stitched seam | 2 pockets with coin compartment | 2 back pockets | Several tool pockets, ruler pocket, pen holders, mobile phone pocket | Zips: YKK

Outer fabric: 85% cotton, 13% polyester, 2% elastane | Trimming: 100% polyamide



blue-denim

black-denim



blue-denim





Made with 85%
Organically Grown Cotton
Certified by CU853836



SIZE
42-64

Short					25	26	27	28				
Standard	42	44	46	48	50	52	54	56	58	60	62	64
Long				94	98	102	106	110				

JN875 Workwear Stretch-Jeans

Jeans - straight cut with a lot of details | Durable denim made of organic cotton and recycled polyester with | elastane content | Comfortable fit | Waistband with belt loops | Knee pad pocket reinforced with Cordura® | Tearproof triple stitched seam | 2 pockets with coin compartment | 2 back pockets

Outer fabric: 85% cotton, 13% polyester (recycled), 2% elastane | Trimming: 100% polyamide

Outer fabric (420 g/m²): 85% cotton, 13% polyester (recycled), 2% elastane | Trimming: 100% polyamide (black-denim)



blue-denim



black-denim





JN1814
Hardshell Workwear Jacket

Professional, wind- and waterproof, breathable work jacket for extreme weather conditions | Durable and sturdy rip-stop fabric made of recycled polyester, wind- and waterproof (10,000 mm water column), breathable and permeable to water vapour (5,000 g/m²/24h), sealed seams | Stand-up collar | Detachable, width- and length-adjustable hood | Width-adjustment on hem | Inner sleeve bands | Extended back | Full-length concealed waterproof 2-way zip with storm flap | and chin cup | Side pockets and breast pocket with waterproof zip, 1 zipped | inner pocket, 1 inner pocket with hook-and-loop fastener | Reflective elements (without protective function / no PPE)
 Outer fabric: 100% polyester (recycled) | Lining: 100% polyester (recycled)



navy/carbon

carbon/black

black/carbon

black/black

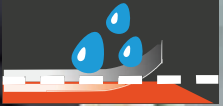
black/carbon





DUPONT™
Sorona®

RECYCLED
POLYESTER



SIZE
XS-6XL

XS S M L XL XXL 3XL 4XL 5XL 6XL

JN1815 Padded Hardshell Workwear Jacket

Professional, padded, wind- and waterproof, breathable work jacket for extreme weather conditions | Warm DuPont™ Sorona® padding | Durable and sturdy rip-stop fabric made of recycled polyester, wind- and waterproof (10,000 mm water column), breathable and permeable to water vapour (5,000 g/m²/24h), sealed seams | Stand-up collar | Detachable, width- and length-adjustable hood | Width-adjustment on hem | Inner sleeve bands | Extended back | Full-length concealed waterproof 2-way zip with storm flap | and chin cup | Side pockets and breast pocket with waterproof zip, 1 zipped | inner pocket, 1 inner pocket with hook-and-loop fastener | Reflective elements (without protective function / no PPE) at the back and on the sleeves | Zip for decoration at the back

Outer fabric: 100% polyester (recycled) | Lining: 100% polyester (recycled) | Padding: 100% polyester



navy/carbon

carbon/black

black/carbon

black/black



carbon/black





SIZE
XS-4XL

SIZE
XS-6XL

**JN1821
Ladies' Hybrid Vest**

**JN1822
Men's Hybrid Vest**

Softshell vest of attractive mixed materials | Easy-care 2-layer softshell fabric combined with stitched insets at the front and at the back | Water- and dirt-repellent due to BIONIC-FINISH@ECO | Warm DuPont™ Sorona® padding | Stand-up collar | Full-length concealed 2-way zip with storm flap and chin cup | Width adjustment on hem | Zipped side pockets and breast pocket, 1 inner pocket with hook-and-loop fastener | Reflective elements (without protective function, no PPE) at the front and at the back | Zip for decoration at the back | Zips: YKK | JN1821: lightly waisted
Outer fabric (280 g/m²): 100% polyester (recycled) | Outer fabric 2: 100% polyester (recycled) | Lining: 100% polyester (recycled) | Padding: 100% polyester



navy/navy



carbon/carbon



black/neon-yellow



black/neon-orange



black/black



black/neon-yellow



SIZE
XS-6XL

SIZE
XS-4XL

XS S M L XL XXL 3XL 4XL 5XL 6XL | XS S M L XL XXL 3XL 4XL

JN1820
Men's Hybrid Jacket

JN1819
Ladies' Hybrid Jacket

Softshell jacket of attractive mixed materials | Easy-care 2-layer softshell fabric combined with stitched insets at the front and at the back. | Water- and dirt-repellent due to BIONIC-FINISH®ECO | Warm DuPont™ Sorona® padding | Stand-up collar | Full-length concealed 2-way zip with storm flap and chin cup | Width adjustment on hem | Zipped side pockets and breast pocket, 1 inner pocket with hook-and-loop fastener | Reflective elements (without protective function, no PPE) at the front and at the back | Zip for decoration at the back | Zips: YKK | JN1819: lightly waisted
Outer fabric (280 g/m²): 100% polyester (recycled) | Outer fabric 2: 100% polyester (recycled) | Lining: 100% polyester (recycled) | Padding: 100% polyester



navy/navy

carbon/carbon

black/neon-yellow

black/neon-orange

black/black

black/neon-yellow







SIZE
42-68

Short	25	26	27	28															
standard	42	44	46	48	50	52	54	56	58	60	62	64	66	68					
long															94	98	102	106	110

JN1833 Workwear Pants with Bib - STRONG -

Specialized workwear pants with bib, with functional details and flexibly adjustable elastic waistband | Sturdy, durable, elastic material mix of recycled polyester, organic cotton and elastane | Elastic waistband with belt loops | Bib with adjustable, elasticated braces, zip pocket at the back | Knee pad pocket reinforced with CORDURA® | Tearproof triple stitched seam | Pockets, several tool pockets | 2 zipped pockets | Ruler pocket, pen holders, mobile phone pocket | Reflective elements (without protective function/no PPE) at the front and at the back | Zips: YKK

Outer fabric (260 g/m²): 65% polyester (recycled), 32% cotton, 3% elastane | Trimming: 100% polyamide



white/carbon



stone/black



red/black



royal/navy



navy/navy



carbon/black



black/carbon



dark-green/black



black/carbon

WORK
STRONG STYLE



Short					25	26	27	28				
standard	42	44	46	48	50	52	54	56	58	60	62	64
long				94	98	102	106	110				

JN1832 Workwear Pants Slim Line - STRONG -

Specialized work pants in slim profile with functional details | Sturdy, durable, elastic material mix of recycled polyester, organic cotton and elastane | Elastic waistband with belt loops | Knee pad pocket reinforced with CORDURA® | Tearproof triple stitched seam | Pockets, several tool pockets | 2 zipped pockets | Ruler pocket, pen holders, mobile phone pocket | Reflective elements (without protective function/no PPE) at the front and at the back | Zips: YKK

Outer fabric (260 g/m²): 65% polyester (recycled), 32% cotton, 3% elastane | Trimming: 100% polyamide



white/carbon



stone/black



red/black



royal/navy



navy/navy



carbon/black



black/carbon



dark-green/black



black/carbon

