



iSAN[®]

3000 Series
SAN Storage Array

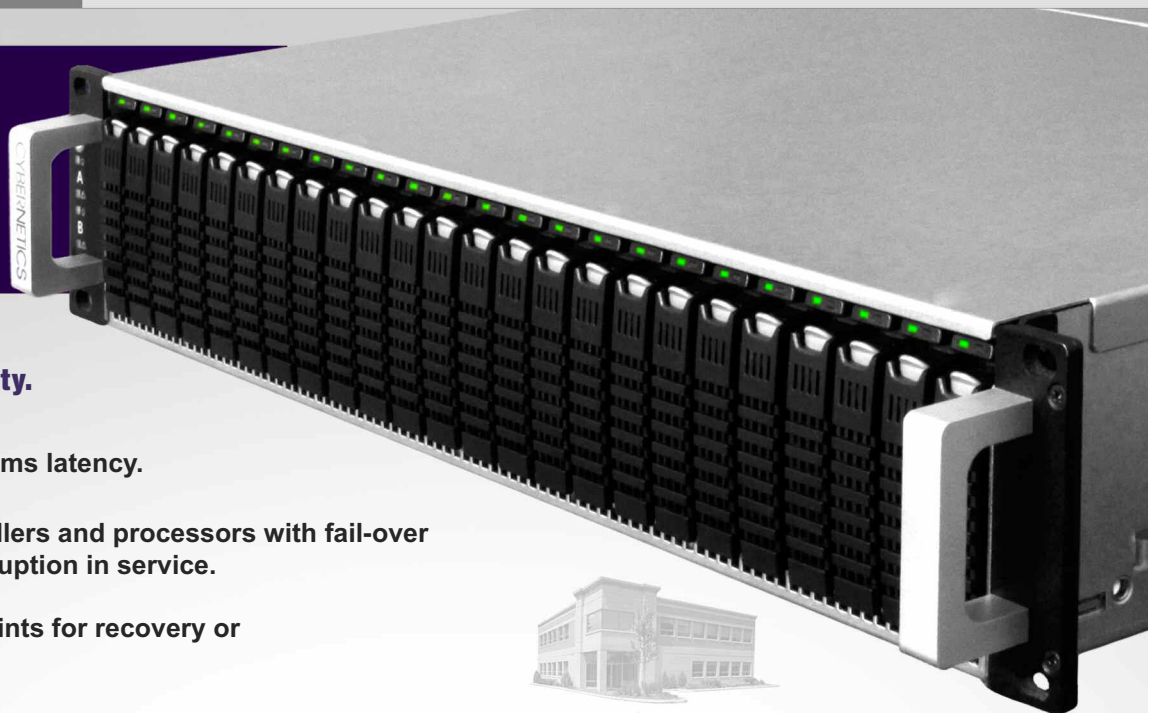
- Up to 300,000 IOPS and scaleable to 700,000 IOPS with easy in-place upgrades.
- Configure with your choice of SSD and HDD hard drives.
- Scale out capacity to over 4.2 PB.

iSAN®

3000 Series
SAN Storage Array

Proven Performance, Real Capacity.

- Fast data access with sub-ms latency.
- Redundant storage controllers and processors with fail-over capability without any disruption in service.
- Snapshots - mountable points for recovery or rollback (expandable).
- Easily upgrade controllers to faster performing iSAN® 5000 or 7000 series models as your data demands increase, and expand capacity to over 9.9 Petabytes.
- Highly secure 256-bit AES Encryption At Rest (EAR) - without performance loss.
- Backup to attached portable disk or tape devices directly from the iSAN® 3000 Series, with no backup server or software required.
- 100% compatible with Windows, Linux, Unix, Netware, and OSx. Certified for VMware, Citrix XEN, and Hyper V.
- Free from annual licensing and capacity fees.



- Replicate fully restorable backups at each site using less bandwidth.



Off-site remote iSAN®



Increase performance as needed with a 10 minute in-place upgrade.



iSAN® 5000 Series

32 GB Tiered Cache Memory,
up to 500,000 IOPS, scalable
up to 6.1 PB.

iSAN® 7000 Series

64 GB Tiered Cache Memory,
up to 700,000 IOPS, scalable
up to 9.9 PB.

Upgradeable Single or Dual Controllers



iSAN® 3000^S Series



iSAN® 3000^T Series

Disk Drive bays	24 - 2.5" Bays	24 - 3.5" Bays
RAID Levels	0, 1, 5, 6, 10	
Hot Swap/Redundant	Controllers, Power Supplies, Disk Drives	
Dedicated I/O Cache	16 GB per controller	
System Type	Standard 2U Rackmount	Standard 4U Rackmount
Network Interface	Two 1 GbE Ports (1 Admin, 1 Data) per controller, Two USB-2 Ports	Four 1 GbE Ports (1 Admin, 3 Data) per controller, Two USB-3 Ports, Two 12 Gb/s SAS device/host Ports
Power Supply	Dual 1200w @ 110-240VAC Auto-Switching	
Electrical	47-63 Hz 15-7.5A	
Power Consumption	344 watts/HR average	381 watts/HR average
Heat Output	1,174 BTU/HR average	1,301 BTU/HR average
Operating Temperature	+5° C to +55° C (+41° F to +131° F)	
Weight	(one controller - 55 lbs.) (two controllers - 64 lbs.)	(one controller - 75 lbs.) (two controllers - 84 lbs.)

Unlike competitive models in this class, you can mix and match SAS and SSD disk drives to your specific requirements.



**Increase capacity
to over 4 PB with
4 expansion cabinets
as data demands grow.**



24 3.5" Bays, 4U



60 3.5" Bays, 4U

- **Exceptional performance**
– Up to 300,000 IOPS.

- **Dynamic Storage Provisioning**
– Expand virtual disk space anytime.

- **Reliable – Hardware level mirroring and automatic failover, with dual controllers.**

- **Flexible – Configure with your choice of SSD and HDD hard drives - even mixed in same chassis.**

- **Connectivity Options– GbE, 10 GbE, 40 GbE, 8/16/32 FC, USB, eSATA and SAS ports.**

- **WAN Replication - Automated, deduplicated, and encrypted site-to-site replication, per volume.**

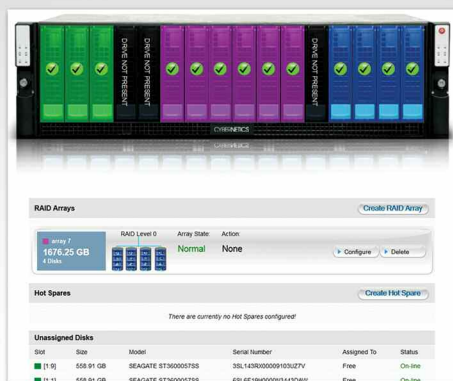
- **High Availability – Hardware level mirroring and automatic failover with no single point of failure.**

- **Secure Access - Control volume access by IP address and/or user.**



Powerful GUI Simplifies Management

Cybernetics' powerful GUI will simplify your SAN storage management with secure access to settings and features of your SAN storage unit from any IP address you allow. Configure storage settings, add virtual disks and virtual disk users conveniently and quickly through easy to navigate options.



It's easy to add disk capacity, upgrade disk drives, create new and separate RAID sets, convert existing RAID sets to different RAID levels -- all with zero user interruption and downtime.

Visual physical status, performance metrics, notifications (including: temperature, fan speed, disks and connections).

Wide Range Of Service Options Add Extra Levels Of Protection To Your Data

Our support is second to none with experienced technical sales and engineering staff members who are firmly committed to our customer's satisfaction - before the sale and throughout the life of every system.

Cybernetics products are fully backed by the best technical support in the business and a range of hardware service levels designed to meet your needs, no matter how time-critical your site is.

For extremely time-critical sites, Cybernetics offers on-site service options.

- 24-7 Service with 4 hour response
- Same Business Day
- Next Business Day

Cybernetics offers affordable service for modular products through replacement of field-swappable components.

- Priority Exchange
- Component Level

Cybernetics' standard return-to-factory maintenance covers all costs of depot repair for normal equipment wear and tear, including all parts and labor.

- Express Depot
- Standard Depot

Founded in 1978 and headquartered in Yorktown, Virginia, Cybernetics is a privately held corporation specializing in the design and manufacture of high performance disk, tape, and virtual tape storage solutions. Our product line features cutting edge technologies which have been rigorously tested to deliver seamless compatibility and solid reliability, along with innovative – and exclusive – features that provide greater functionality, data accessibility, and return on investment than any other storage solutions provider.

