

## BIO



Born in Buenos Aires in 1969, Diego Petrate is a designer/architect with more than 25 years of experience whose work includes a wide variety of projects, ranging from architecture, interior, furniture to graphic design. Diego Petrate has an academic and professional background from Argentina, Europe and the US and he has worked for more than six years for Frank O. Gehry on buildings, design competitions and exhibitions. Currently, he is a professor of architecture at Torcuato DiTella University in Buenos Aires. In the past he has taught architectural design at the postgraduate level at the University of Toronto, Southern California Institute of Architecture [SCI-arc] in Los Angeles and University of Utah, among others.

Previously, he studied architecture at National University of La Plata, Argentina attended the StaedelSchule Frankfurt as a guest student to Enric Miralles and Sir Peter Cook and received a Master's degree on architecture from UCLA with Gregg Lynn as Thesis advisor. He is the recipient of the Fulbright Scholarship, as well as grants from the Argentine Ministry of Education and the Austrian Academic Exchange Service.

# DIEGO PETRATE

## EDUCATION

### Master of Architecture

UCLA-School of Architecture and Urban Design  
Magna Cum Laude. [1997-99]

### Postgraduate Studies

Staedelschule Frankfurt [Frankfurt Academy of Art]  
[1995-97]

### Bachelor of Architecture

School of Architecture and Urbanism,  
Universidad Nacional de La Plata, Argentina. [1987-94]

## PROFESSIONAL EXPERIENCE

### DIEGO PETRATE ARCHITECTS

Buenos Aires [2005-present]

Principal

#### Olazabal Isadora Tower

Buenos Aires, Argentina

Condominium tower.  
Including 48 units,  
amenities, gym, swimming  
pool and green terraces.  
52000 SF  
[Built 2022, In association  
with RSK Proyectos Urbanos]



#### Strub Vinothek

Nierstein, Germany

Project for a 5,200 SF  
private residence, wine  
library and event space for  
the german winery Strub  
1710.  
[Built 2021, In association  
with Fabian Lange Architect]



#### Wynne Residence

Southampton, New York

Project for a 6,900 SF  
private residence.  
[built 2020]



# DIEGO PETRATE

**Hogar Ledor Vador  
Foundation**  
Buenos Aires, Argentina

Construction and renovation  
of 30.400 SF nursing home.  
[Construction: 2018. Worked  
associated with Obrycon SRL]



**Housing project for the  
Union of Electricians**  
Parque Lezama. Buenos  
Aires, Argentina

Project for 125 apartments.  
Amenities. Parking. Total  
150.000 SF  
[Built 2019. In association  
with Grinberg Dwek Iglesias  
Architects]



**Montigny Winery**  
Nierstein, Germany

Project for wine showroom on  
the grounds of the german  
winery Montigny.  
[ In association with Fabian  
Lange Architect]]



**Or Menajem  
Cultural Center**  
Belgrano. Buenos Aires,  
Argentina

Finalist. Private competition  
entry. Total 89000 SF  
[In association with Grinberg  
Dwek Iglesias Architects]



**Buenos Aires  
Government Center**  
Barracas. Buenos Aires,  
Argentina

First prize. Competition entry  
for new town hall and offices  
for the city of Buenos Aires.  
Total 1100000 SF  
[In association with Grinberg  
Dwek Iglesias Architects]



**Bundestag Entrance  
Building**  
Berlin. Germany

Competition entry for the new  
entrance building to the  
german parliament. Total  
420000 SF  
[In association with Grinberg  
Dwek Iglesias Architects]



Soldado de la Independencia 1270-5  
1426 Buenos Aires, Argentina  
+54.9221.476.1900  
info@diegopetrato.com

# DIEGO PETRATE

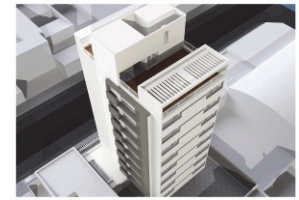
## **Cantilo y 17 housing** City Bell, Argentina

Development, design and construction. Four unit housing complex. 6000 SF [Construction 2011]



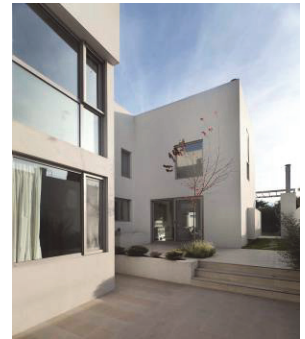
## **Bolivar Building** Pilar, Argentina

25 units apartment building. 16,000 SF [Construction 2009]



## **Cini-Ivanov Residence** Gonnet, Argentina.

Single family house. 248 sqm. [construction: december 2009]



## **Arditti Residence** City Bell, Argentina

Single family house. 257 sqm. [construction: built 2008]



## **Veckerelli Residence** Los Angeles

House addition and remodel. 1700sf remodel and 1900sf addition. [not built]



# DIEGO PETRATE

## Other projects

- Grand Egyptian Museum Competition.** Cairo  
100,000 sqm. museum and research complex adjacent to the Giza pyramids. Cairo. [2002]
- European 5- Housing Competition.** Almeria, Spain  
Urban design and 50 housing units complex. [2000]
- Palmers EventSpace.** Vienna, Austria  
10,000 SF Showroom and archive design for Palmers clothing company. [1998]
- Nativa Furniture and Arts.** San Diego  
Product design, brand and corporate architectural identity development. [2001]
- Greenport Waterfront Park, Long Island.** New York  
Competition Entry. [1997]
- National Museum of Korea.** Seoul. Korea  
Competition project for a 1,000,000 sf museum. [1995]

## Design Architect

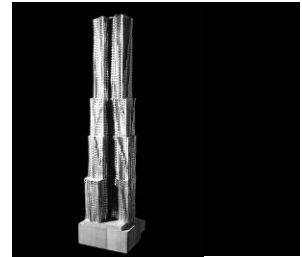
### Frank Gehry & Partners, LLP

Los Angeles [1999-2005]

Worked on a selection of the firm's projects including:

#### Torre Beekman Nueva York

Proyecto de torre residencial de 75 pisos en Manhattan. El proyecto incluye una escuela primaria pública, departamentos para venta y alquiler y consultorios externos de un hospital lindero. [En desarrollo. Construcción estimada: 2007]



#### New World Symphony Campus Expansion Miami, Florida

90,000 sf complex, including a concert hall, teaching and rehearsal rooms, administration, a 6 stories parking garage and one city block City Center Park. Responsible for the development of the schematic design package. [Scheduled Construction: 2006-2007]



#### Le Clos Jordan Winery Niagara Escarpment Canada

A 30,000 sf vineyard including full red and white wine production facilities, a restaurant, and a tasting room. As job captain. Lead the



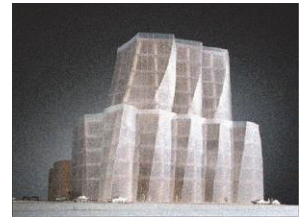
# DIEGO PETRATE

production of 2d/3d databases.  
Responsible for developing  
concrete structure, metal  
cladding roof and wall systems  
and to coordinate with  
consultants  
mechanical/electrical systems  
from schematics through  
contract documents.  
[Scheduled Construction:  
2004-2006]



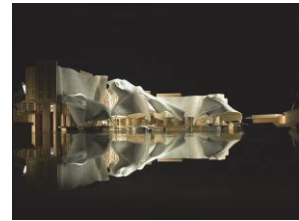
## InteractiveUSA Headquarters New York

50,000 sf. office building.  
[Scheduled Completion: 2005]  
Detailed fittings, construction  
documents and prepared bid  
documents for double  
curvature CNC fabricated glass  
partitions.



## Venice Gateway Venice, Italy

A 90,000 sm airport-to-boat  
terminal exchange, including  
office spaces, a hotel, retail  
spaces, and a conference  
center.  
Lead the team that in  
collaboration with Gehry  
Technologies, LLC, developed  
and implemented a parametric  
facade design tool in Catia V5  
software. Responsible for Catia  
V5 3D database and 2D  
drawings automatic production.  
[not built]



## Frank Gehry Architect Guggenheim Museum New York

Designed and coordinated  
layout on site of the exhibition  
Frank Gehry Architect.  
Presentation of 40 projects  
featuring models, plans,  
drawings, furniture,  
photographs and video footage  
illustrating the design process.  
[Completion: May 2001]



## Astor Place Hotel New York

300 room design for Ian  
Schrager Hotels, Inc. including  
amenities such as a restaurant,  
a café, a bar and a fitness  
center.  
Developed proposals and  
massing alternatives.  
[not built]



# DIEGO PETRATE

Design Assistant

**Case Western University  
Peter B. Lewis School of  
Management**  
Cleveland, Ohio

A 140,000 sf university building including classrooms, administrative offices, a library and a café. Worked on the design of furnishings and interiors.  
[Completion: October 2002]



**Corcoran Gallery and  
College of Art Addition**  
Washington D.C.

The renovation, design and construction of an existing 140,000 sf facility to include art galleries, studios, and related support spaces.



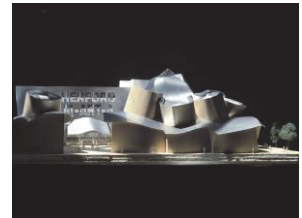
**Guggenheim Museum  
The Manhattan Project**  
New York, New York

Concept Design for museum complex to contain Exhibitions, the Center for Arts and Technologies, the Center for Architecture and Design, a 450 ft tower to house executive suites, restaurant, and a 1100 seat performing arts center. [not built]



**M-Art-a Museum**  
Herford, Germany

A 5,000 sm expansion and renovation of an existing museum including exhibition spaces, a café, a retail store and administrative offices.  
[Construction: 2001-2005]



**New York Times  
Headquarters  
Competition**  
New York, New York

Competition for the design of a 700,000 – 900,000 sf office building for The New York Times, including a 170,000 sf newsroom and 600,000 sf speculative office space.



**The Jay Pritzker  
Pavilion**  
Chicago

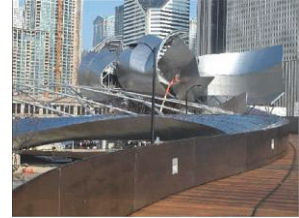
An open-air venue featuring music performances located in Grant Park, on the edge of Lake Michigan. The main seating area accommodates up to 4,000 people in fixed seats. A lawn area accommodates up to an additional 6,000 people.



Soldado de la Independencia 1270-5  
1426 Buenos Aires, Argentina  
+54.9221.476.1900  
info@diegopetrato.com

## DIEGO PETRATE

A pedestrian bridge spanning Columbus Drive links the Pavilion to the eastern portion of Grant Park and the edge of Lake Michigan.  
[Completion - July 2004]



### Walt Disney Concert Hall Los Angeles

A 200,000 square feet complex located in downtown Los Angeles. It serves as the permanent home for the Los Angeles Philharmonic. The focus of the design is the 2,265-seat main concert hall. A 2,500-car garage on six levels is located below grade.  
[Completion - 2003]



Consultant

**Wolfgang Waldner & Partners, Haibach-Klosa Planungsburo and Joseph Eisenbach & Partners**  
Consultant on urban planning and design issues for these architecture and urban planning firms. Projects include Frankfurt's Diakonisen Hospital and Leipzig Market Square among others.  
Frankfurt. [6/1996-7/1997]

Project designer/drafting

**Zimmer Gunsul Frasca Partnership**  
Los Angeles [1998]

**Busso & Galarregui Assoc. Architects**  
La Plata, Argentina. [10/1993- 12/1994]

ACADEMIC EXPERIENCE

Instructor

**Universidad Torcuato Di Tella**  
Professor. Information Systems in Architecture.  
[2009-Present]  
**National University of La Plata, School of Architecture**  
Professor. Theory of Architecture.  
[2010-Present]  
**University of Toronto**  
Instructor. Visiting studio: 'Coding and Decoding the Contemporary City, the Buenos Aires Case'.  
[Buenos Aires, Summer 2008, 2009, 2012 & 2013]  
**Southern California Institute of Architecture [SCI-arc]**  
Faculty member at the graduate level.



Soldado de la Independencia 1270-5  
1426 Buenos Aires, Argentina  
+54.9221.476.1900  
info@diegopetrato.com

# DIEGO PETRATE

Taught courses on design, materials, digital technology and fabrication. [2003-2006]

## **University of Utah, College of Architecture and Planning**

Visiting Associate Professor. [Fall 2005]

Teaching Assistant

## **UCLA Department of Architecture & Urban Design.**

M.Arch I Design Studio [Spring 1998]

M.Arch I Design Studio [Fall 1998]

## **Staedelschule Frankfurt**

Assistant to Prof. Enric Miralles. [1996-97]

## **National University of La Plata, School of Architecture**

Design Studio V. Chair Vicente Krause [1994]

PROFESSIONAL  
MEMBERSHIPS

## **American Institute of Architects**

Associate Member. [1999-2006]

## **CAPBA**

Member since 2009

## **CPAU**

Member since 2016

LANGUAGES

Native spanish speaker, fluent in English. Reads Italian, German and French.