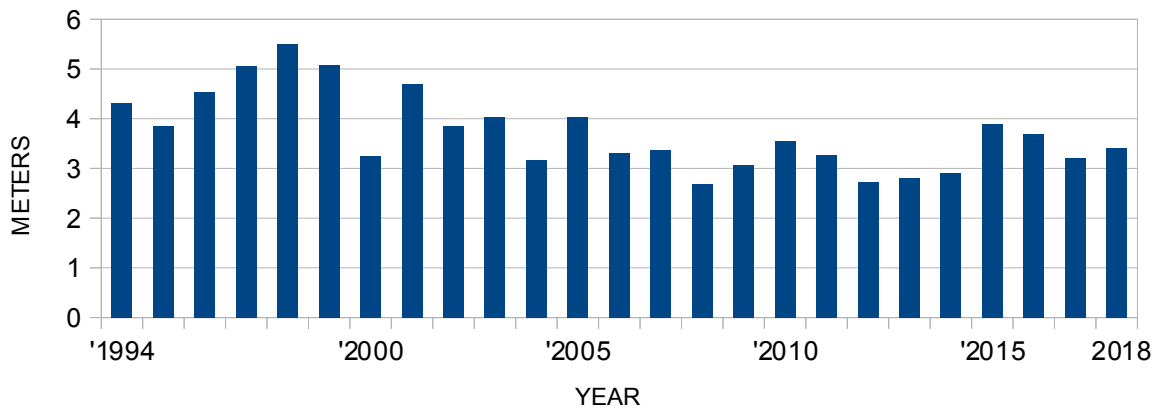


REBECCA LAKE, BELLA LAKE
SUMMER 2018
WATER QUALITY REPORT
JULY 2019

WATER CLARITY, secchi disc observations

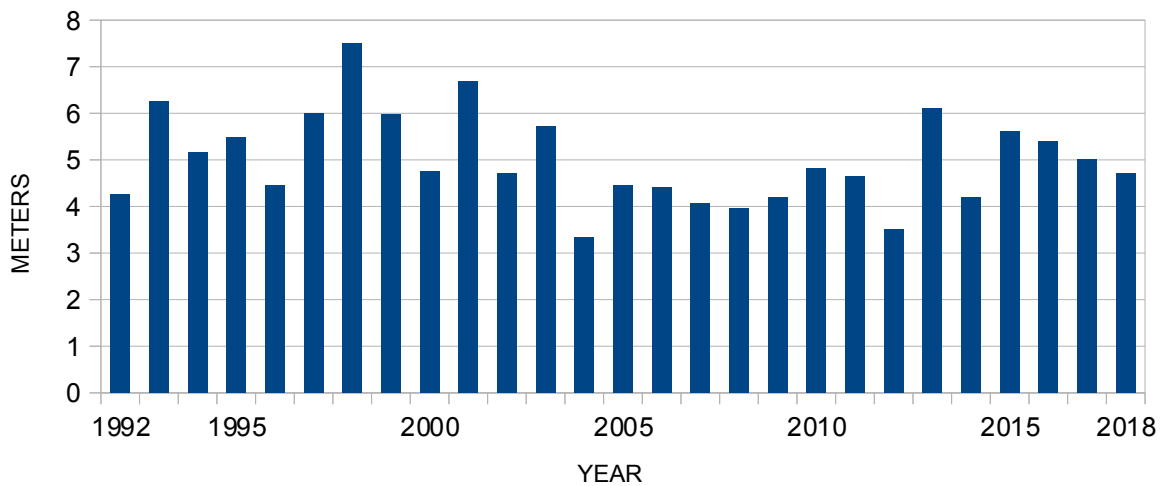
REBECCA LAKE

REBECCA SECCHI DEPTH



BELLA LAKE

BELLA SECCHI DEPTH

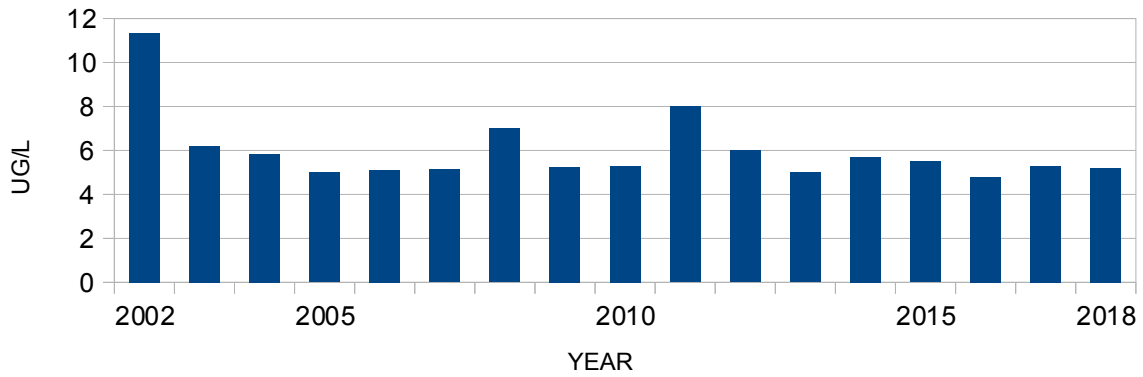


PHOSPHATE CONTENT

UNDER 10 IS DEFINED AS MODERATELY ENRICHED, PREFERABLY UNDER 8.

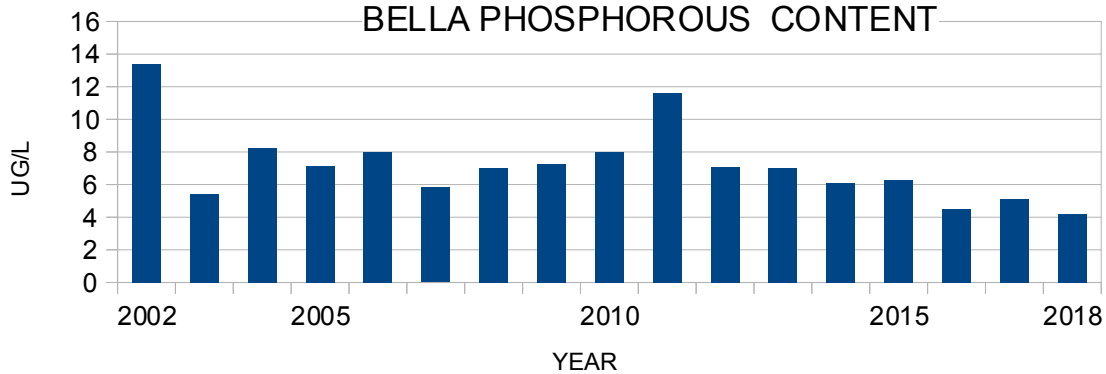
REBECCA LAKE

REBECCA PHOSPHORUS CONTENT



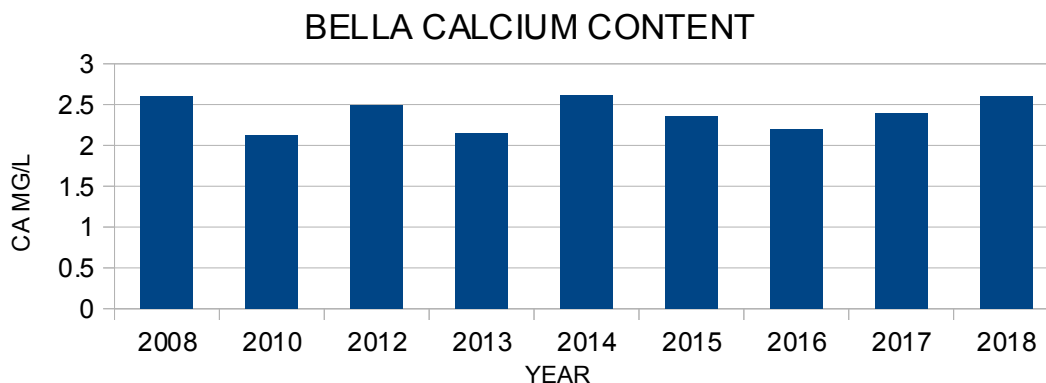
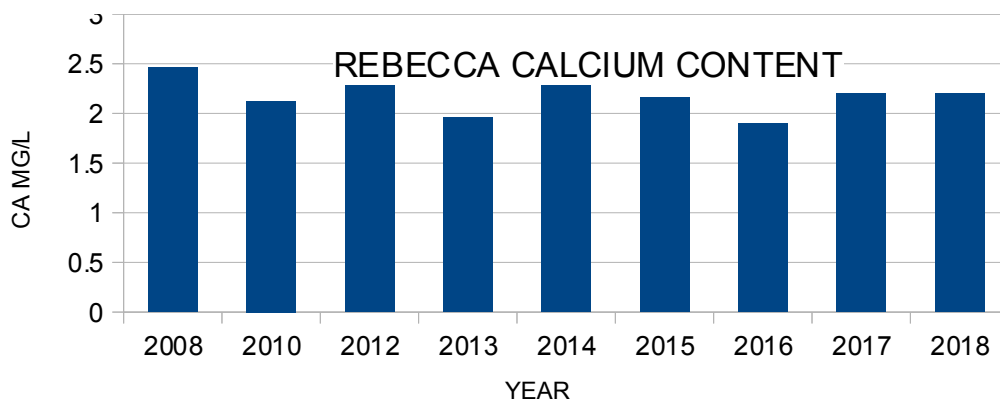
BELLA LAKE

BELLA PHOSPHOROUS CONTENT



CALCIUM CONTENT

minimum for sustainable environment >2



<https://foca.on.ca/stewardship-foca-history/>

<http://www.muskokawatershed.org/wp-content/uploads/AlgaeIDSheet.pdf>

<https://www.ontario.ca/page/report-spill>

<https://foca.on.ca/shoreline-owners-guide-to-healthy-waterfronts/>

<http://www.muskokawatershed.org/watersheds/muskoka-river-watershed/>

<http://mailchi.mp/2bfb9484ff60/downstream-spring-2017>

John Houser 705 635 2492