

JINMA

254 Parts Book

Jinma USA LLC

Explanation

Jinma USA PARTS Catalog 2022

JINMA-YL254Y Horticultural Tractor Parts Catalogue》 is compiled according to the drawing of our products: HUANGHAI JINMA -YL254Y Horticultural Tractor. It serves as a guide to help our users understand the construction and the relation of assembly.

As nations and regions have different requirements of use and improvement of product is bound to be made from time to time, drawings may not fully conform to the actual parts supplied, please care for it. If here are some errors in this catalogue, we will modify, please refer to the new edition.



JINMA

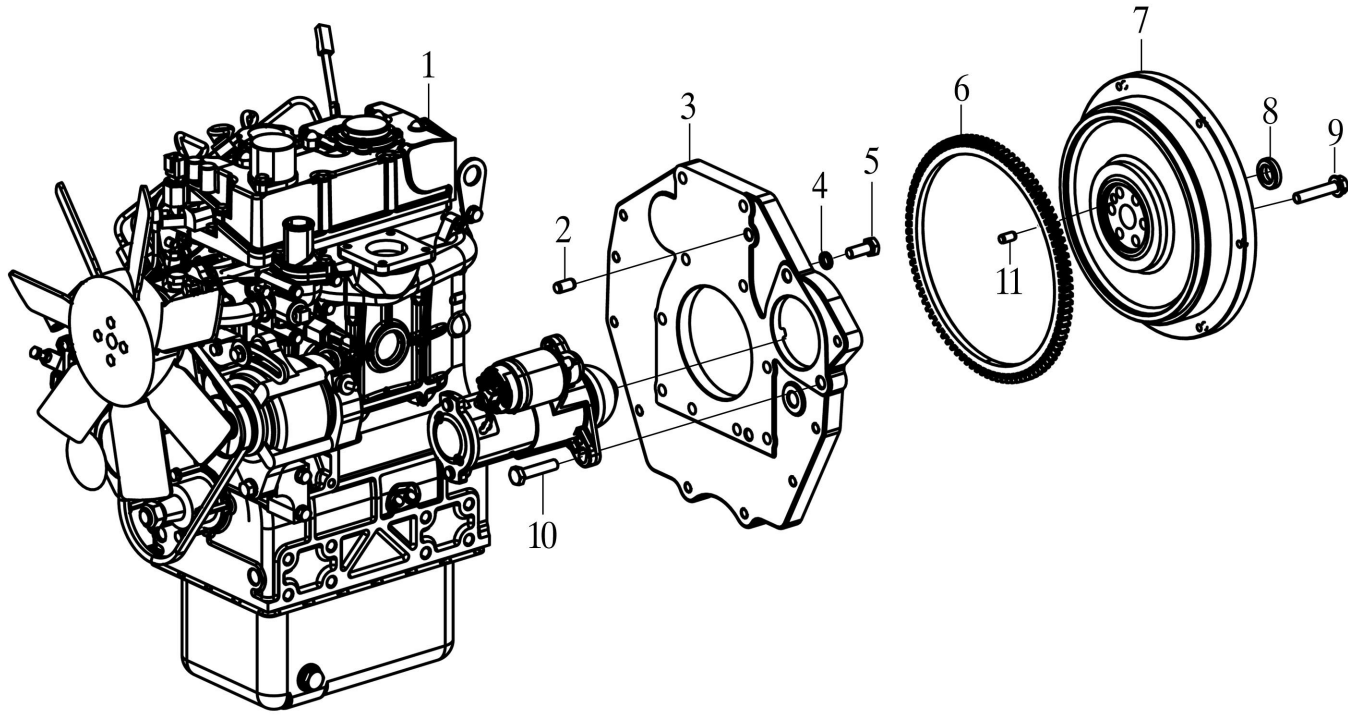
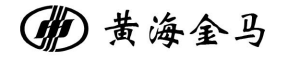
目 录

EA00-发动机总成	001
AF11-进气总成	003
CL13-散热器总成	005
AH20-油门操纵总成	007
EX22-排气总成	009
CL21-离合器总成	011
CL21-离合器总成	013
FR29-前减速箱总成	016
BA30-托架总成	019
FD31-前桥总成	021
WH32-前驱动轮	023
WH34-驱动轮	025
DR35-牵引板总成	027
DS36-传动轴总成	029
TR37-变速箱总成	031
TR37-变速箱总成	034
TR37-HST 静液压传动器	037
TR37-HST 操纵机构总成	039
RA38-后桥总成	042
RA38-后桥总成	044
FD39-末端传动壳体	047

FD39-末端传动轴·····	050
ST40-液压转向系统总成·····	052
PT41-动力输出总成·····	056
PT41-动力输出总成·····	059
BR43-制动器总成·····	063
BR43-制动操纵机构·····	065
BR43-制动器踏板·····	068
SE44-驾驶座总成·····	070
RB46-安全架总成·····	072
RB46-前安全架总成·····	075
PA47-机罩、仪表盘及支架总成·····	077
PA47-机罩、仪表盘及支架总成·····	079
PA47-机罩、仪表盘及支架总成·····	081
EA48-电器系统总成·····	083
EA48-电器系统总成·····	086
FT50-燃油箱总成·····	088
PA51-地板总成·····	092
HT54-HST 管路总成·····	095
HT54-HST 管路总成·····	098
HY55-液压提升器总成·····	100
HY55-液压提升器总成·····	104
SM56-上拉杆·····	106

SM56-下拉杆	108
SM56-限位链	110
SM56-提升杆	112
DI57-分配器总成	114
FC74-前配重总成	116
HL58-液压提升管路总成	118
HL58-液压提升管路总成	121
HL58-液压提升管路总成	123
工具	126
工具	127

发动机总成
EA00-010 Engine Assembly



通用性
GENERALITY

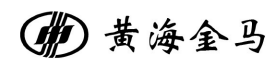
YL254Y

备注
REMARKS

序号 NO.	物料代码 ERP No.	零件名称	PART NAME	数量 Q'TY	通用性 GENERALITY	备注 REMARKS
1	B403J-11	发动机总成	Engine Assembly	1	YL254Y	
2	D09-119.1-10X20	圆柱销10X20	Cylindrical pin 10x20	2	YL254Y	
3	B254Y.10.101A	飞轮壳	Flywheel housing	1	YL254Y	
4	D05-93-10	垫圈 10	Washer 10	8	YL254Y	
5	D01-5783-10X25	螺栓M10X25	Bolt m10x25	8	YL254Y	
6	B254Y.10.103A	齿圈	Ring Gear	1	YL254Y	
7	B254Y.10.102A	飞轮	Flywheel	1	YL254Y	
8	D06-276-61903-2RZ	深沟球轴承61903-2RZ	Deep groove ball bearing 61903-2RZ	1	YL254Y	
9	D01-5787-10X1.25X50-10.9	螺栓M10X1.25X50-10.9	Bolt m10X1.25X50-10.9	6	YL254Y	
10	D01-5787-10X50	螺栓M10X50	Bolt M10x50	2	YL254Y	
11	D09-119-8X16	圆柱销8X16	Cylindrical pin 8x16	1	YL254Y	

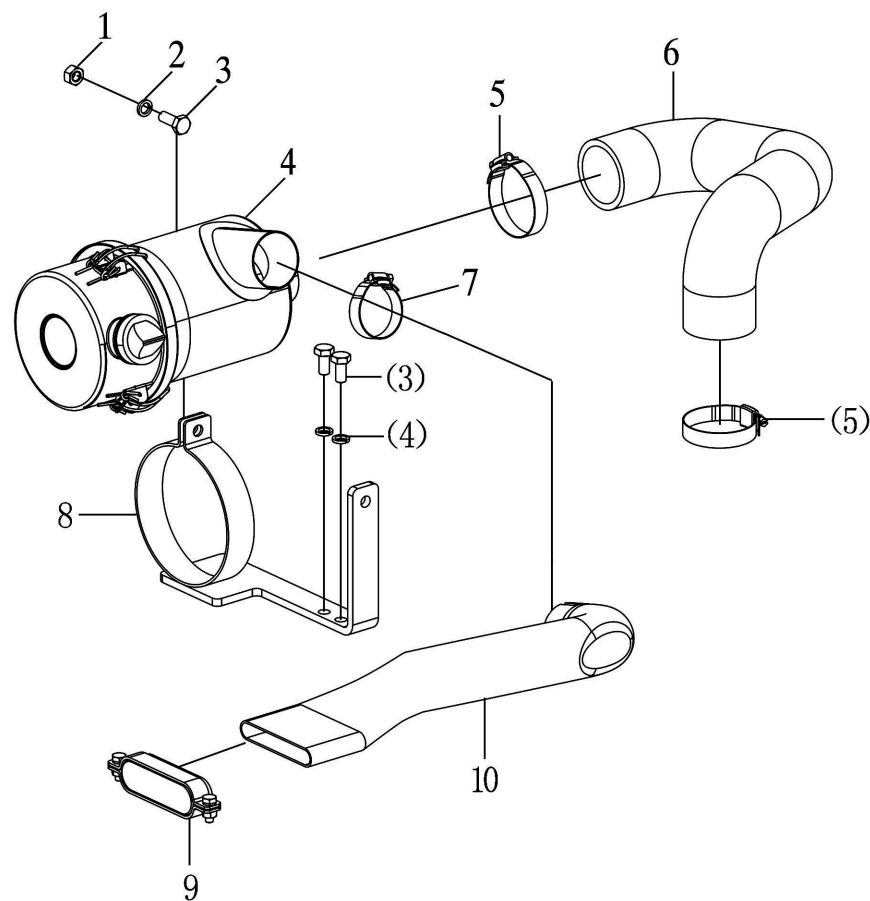
进气系统总成

AF11-010 Air Intake Assembly



通用性
GENERALITY

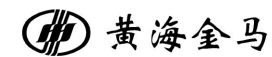
YL254Y



备注
REMARKS

序号 NO.	物料代码 ERP No.	零件名称	PART NAME	数量 Q'TY	通用性 GENERALITY	备注 REMARKS
1	D03-6170-6	螺母M6	Nut M6	1	YL254Y	
2	D05-93-6	弹垫6	Spring washer 6	3	YL254Y	
3	D01-5783-6x16	螺栓M6x16	Bolt M6x16	3	YL254Y	
4	B3M78-252000	空气滤清器总成	Air Filter	1	YL254Y	
5	ZBJ15001	卡箍38-63	Clamp 38-63	2	YL254Y	
6	B254Y.11.101A	进气胶管	Air Inlet hose	1	YL254Y	
7	ZBJ15001	卡箍35-51	Clamp 35-51	1	YL254Y	
8	B254Y.11.010A	空滤器支架焊合件	Air Filter Bracket Welding Assembly	1	YL254Y	
9	B3M78-254000	进气接管网罩部件	Intake manifold cover assembly	1	YL254Y	
10	B3M78-250002A	空滤器接管	Air Filter nozzle	1	YL254Y	

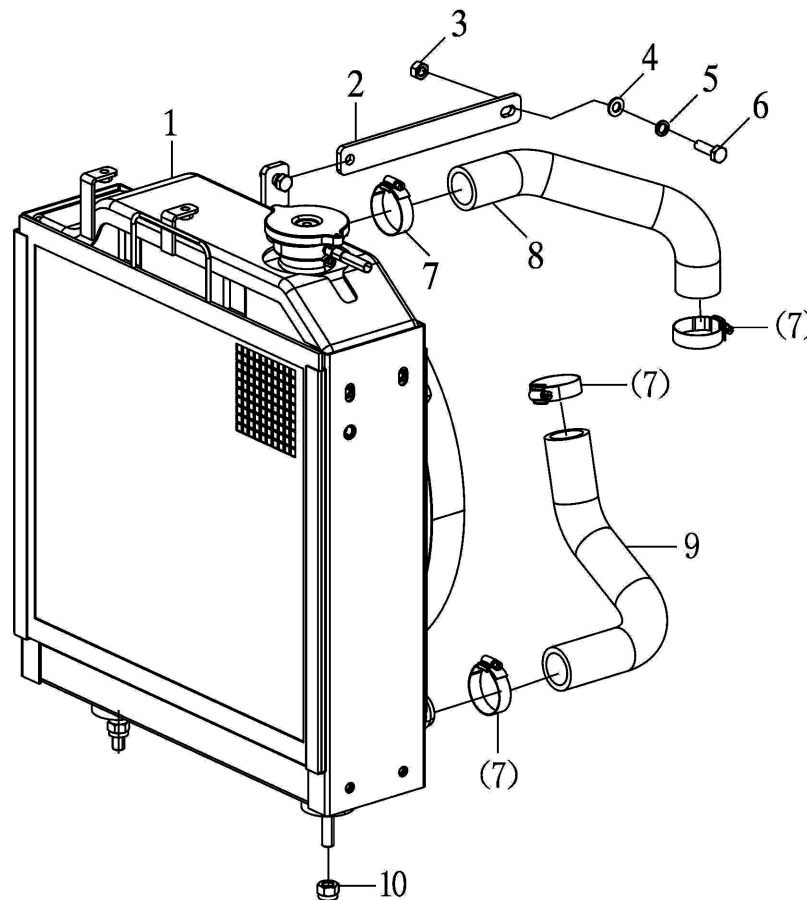
散热器总成
CL13-010 Radiator Assembly



通用性
GENERALITY

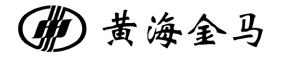
YL254Y

备注
REMARKS



油门操纵总成

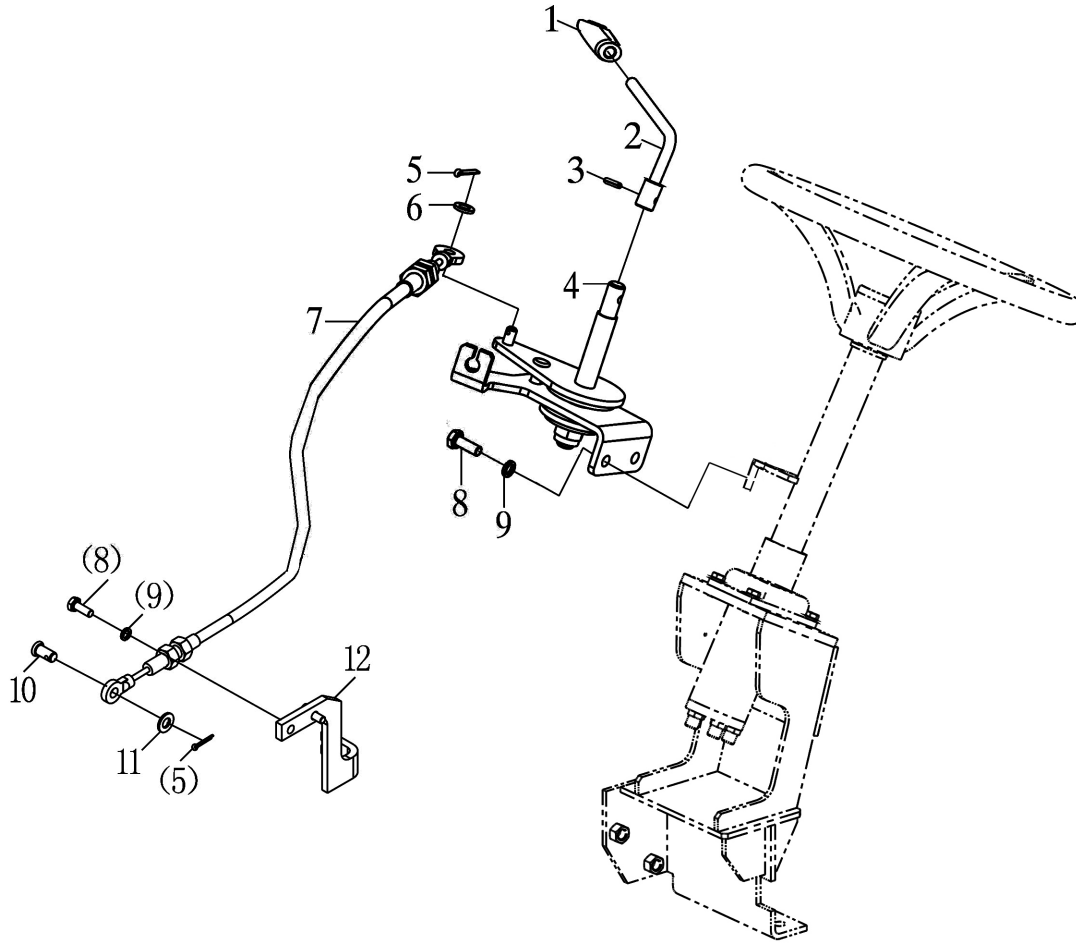
AH20-010 Accelerator Handling Assembly



通用性
GENERALITY

YL254Y

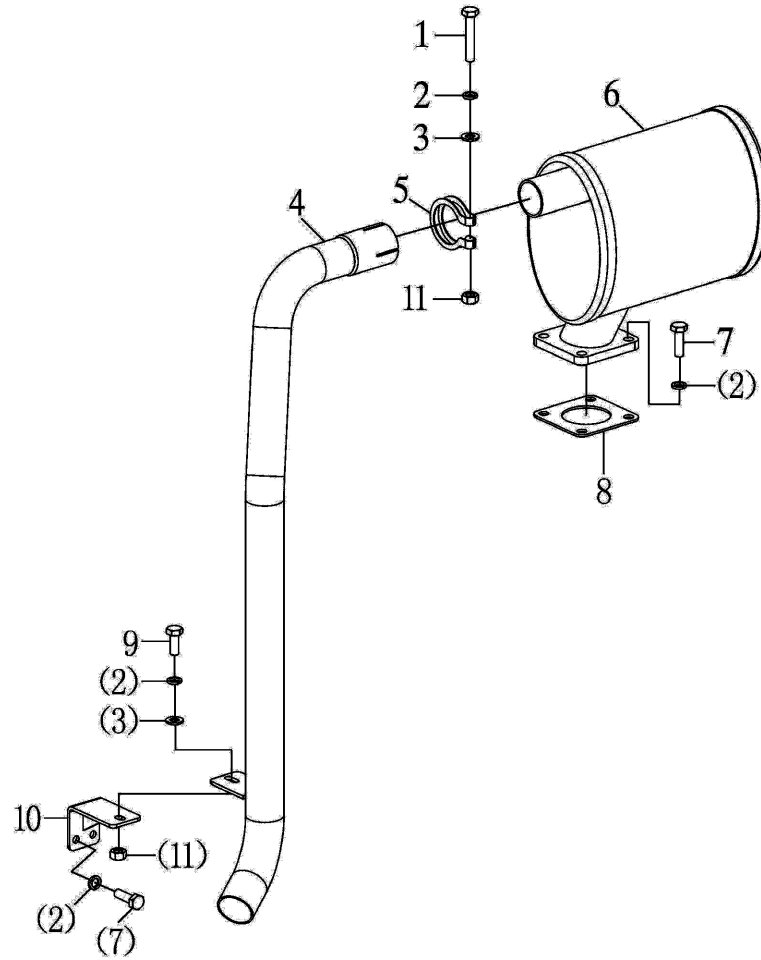
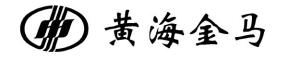
备注
REMARKS



序号 NO.	物料代码 ERP No.	零件名称	PART NAME	数量 Q'TY	通用性 GENERALITY	备注 REMARKS
1	BYS454.20.018	油门手柄合件	Accelerator handle fitting	1	YL254Y	
2	BYS454.20.022	弯把焊合件	Bend welded joint	1	YL254Y	
3	D09-879.1-5X20	圆柱销 5X20	Cylindrical pin 5X20	1	YL254Y	
4	BYS354.20.012	手油门操纵机构总成	Welded joint for manual accelerator lever	1	YL254Y	
5	D09-91-2X16	开口销 2X16	Split pin 2x16	2	YL254Y	
6	D05-97.1-6	平垫圈 6	Flat washer 6	1	YL254Y	
7	B254Y.20.010A	手油门拉线组合件	Hand throttle cable assembly	1	YL254Y	
8	D01-5783-6X16	螺栓 M6X16	Bolt m6x16	4	YL254Y	
9	D05-93-06	垫圈 6	Washer 6	4	YL254Y	
10	D09-882-8X16	销轴8X16	Pin 8X16	1	YL254Y	
11	D05-97.1-6	平垫圈 8	Flat washer 8	1	YL254Y	
12	B254Y.20.101A	拉线支架	Cable support	1	YL254Y	

排气系统总成

EX22-010 Exhaust Assembly



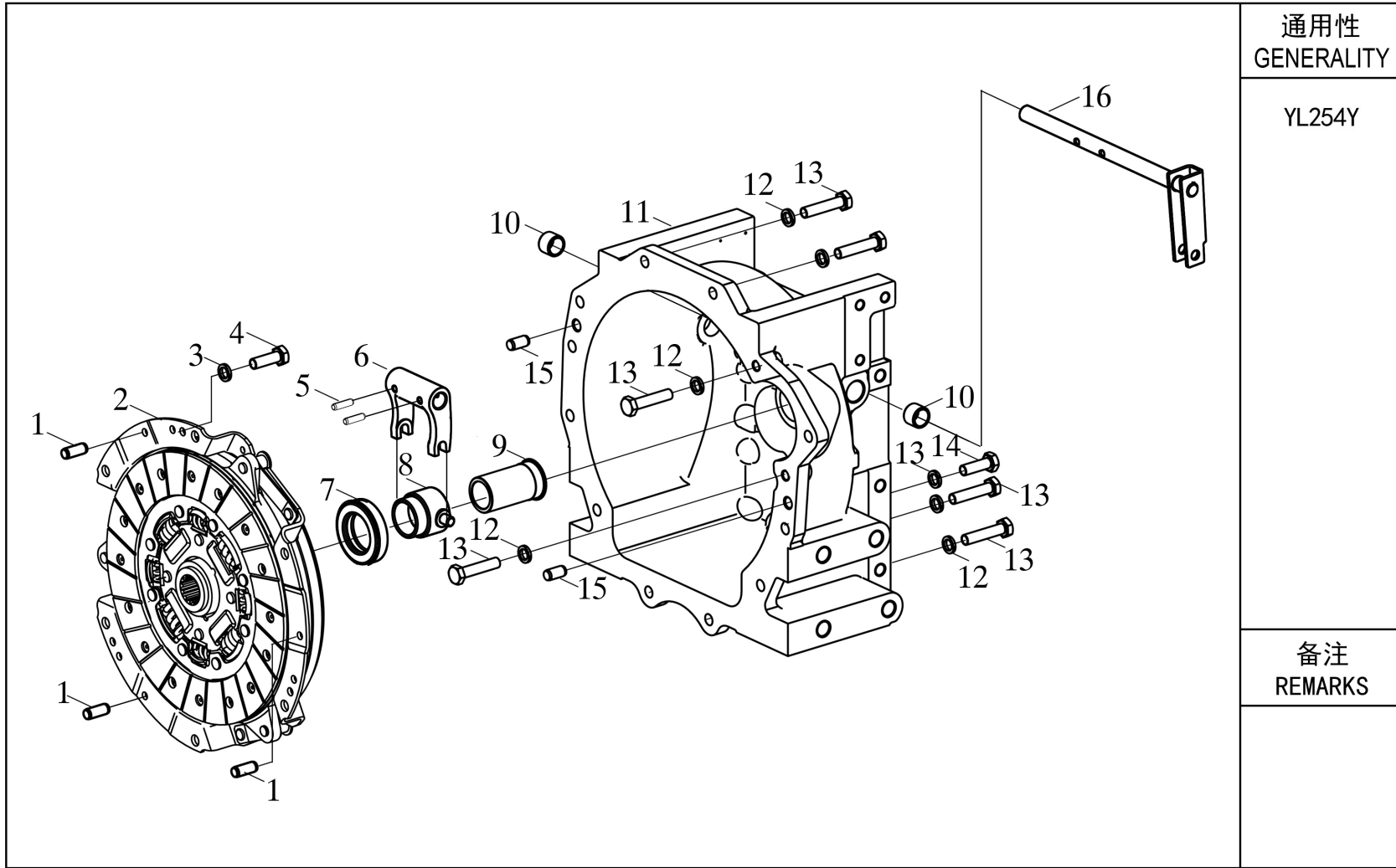
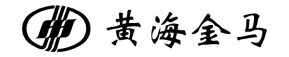
通用性
GENERALITY

YL254Y

备注
REMARKS

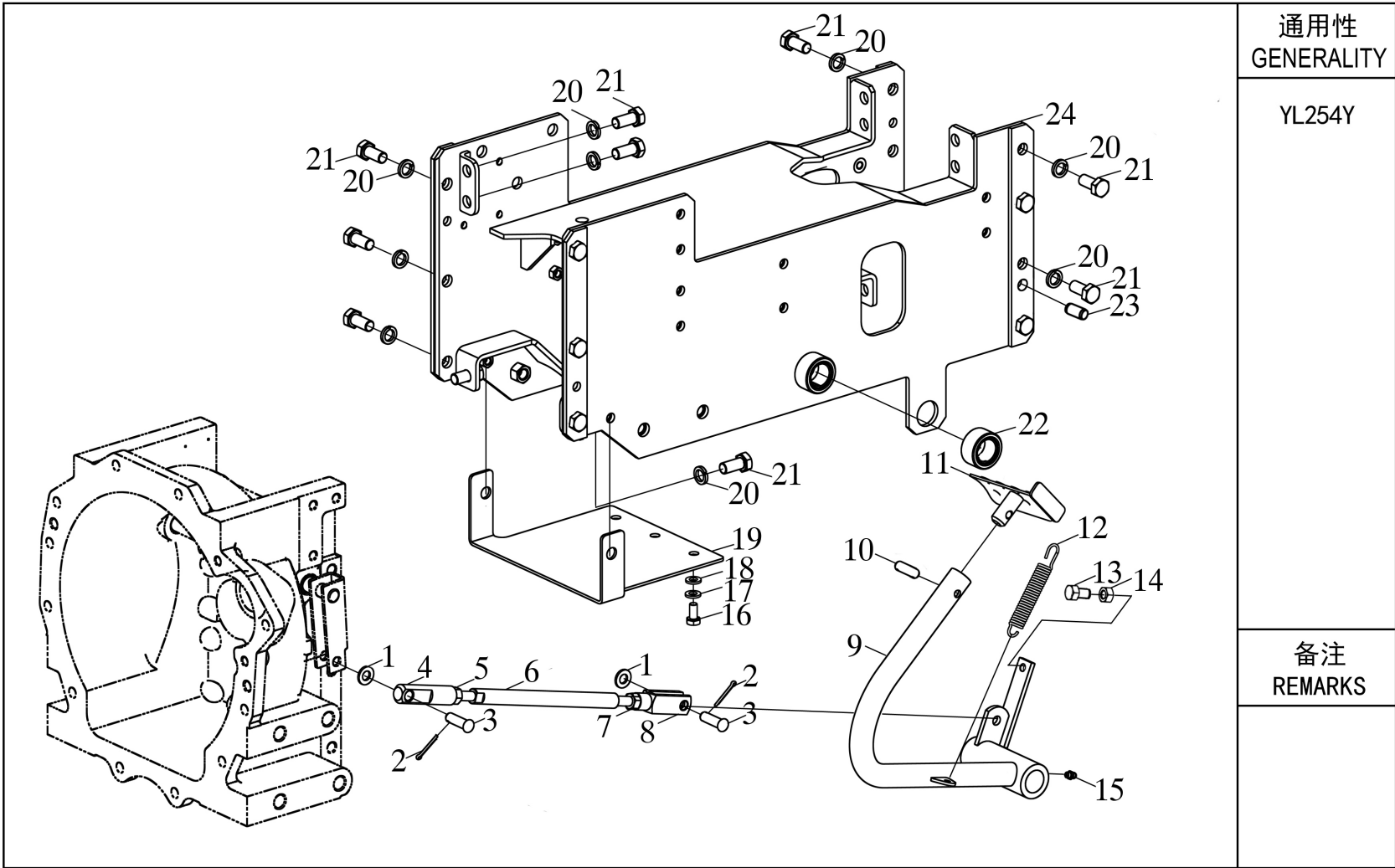
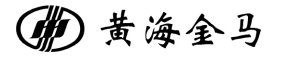
序号 NO.	物料代码 ERP No.	零件名称	PART NAME	数量 Q'TY	通用性 GENERALITY	备注 REMARKS
1	D01-5783-8x45	螺栓M8x45	Bolt M8x45	1	YL254Y	
2	D05-93-8	弹垫8	Spring washer 8	10	YL254Y	
3	D05-97.1-8	平垫8	Flat gasket8	4	YL254Y	
4	B254Y.22.011A	排气管焊合件	Exhaust Pipe Weld	1	YL254Y	
5	B254Y.22.101A	卡箍38	Clamps 38	1	YL254Y	
6	B254Y.22.010A	消声器总成	Muffler assy	1	YL254Y	
7	D01-5783-8x45	螺栓M8x25	Bolt M8x25	6	YL254Y	
8		消声器垫片	Muffler gasket	1	YL254Y	
9	D01-5783-8x20	螺栓M8x20	Bolt M8x20	1	YL254Y	
10	B254Y.22.012A	固定支架焊合件	Welding fitting for fixed support	1	YL254Y	
11	D03-6170-6	螺母M8	Nut M8	2	YL254Y	

离合器总成
CL21-010 Clutch Assembly



序号 NO.	物料代码 ERP No.	零件名称	PART NAME	数量 Q'TY	通用性 GENERALITY	备注 REMARKS
1	D09-119.1-6X20	圆柱销 6x20	Cylindrical pin 6x20	3	YL254Y	
2	B254Y.21.012	离合器分装总成	Clutch sub assembly assembly	1	YL254Y	
3	D05-93-08	垫圈 8	Washer 8	8	YL254Y	
4	D01-5783-8X20	螺栓 M8X20	Bolt m8x20	8	YL254Y	
5	D09-879.1-6X30	弹性圆柱销 6x30	Elastic cylindrical pin x30	2	YL254Y	
6	B254Y.21.106	离合器拨叉	Clutch fork	1	YL254Y	
7	D18-688808	分离轴承	Release bearing	1	YL254Y	
8	B254Y.21.103	分离轴承座	Release bearing housing	1	YL254Y	
9	B254Y.21.110	轴承座	Bearing pedestal	1	YL254Y	
10	B254T.21.111	分离轴衬套	Release shaft bushing	2	YL254Y	
11	B254Y.21A.101A	离合器壳体	Clutch housing	1	YL254Y	
12	D05-93-10	垫圈 10	Washer 10	13	YL254Y	
13	D01-5783-10X50	螺栓 M10X50	Bolt m10x50	4	YL254Y	
14	D01-5783-10X40	螺栓 M10X40	Bolt m10x40	9	YL254Y	
15	D09-119.1-10X20	圆柱销10x20	Cylindrical pin 10x20	2	YL254Y	
16	B254Y.21.016	分离轴摇臂焊合件	Split shaft rocker arm weldment	1	YL254Y	

离合器总成
CL21-020 Clutch Assembly



通用性
GENERALITY

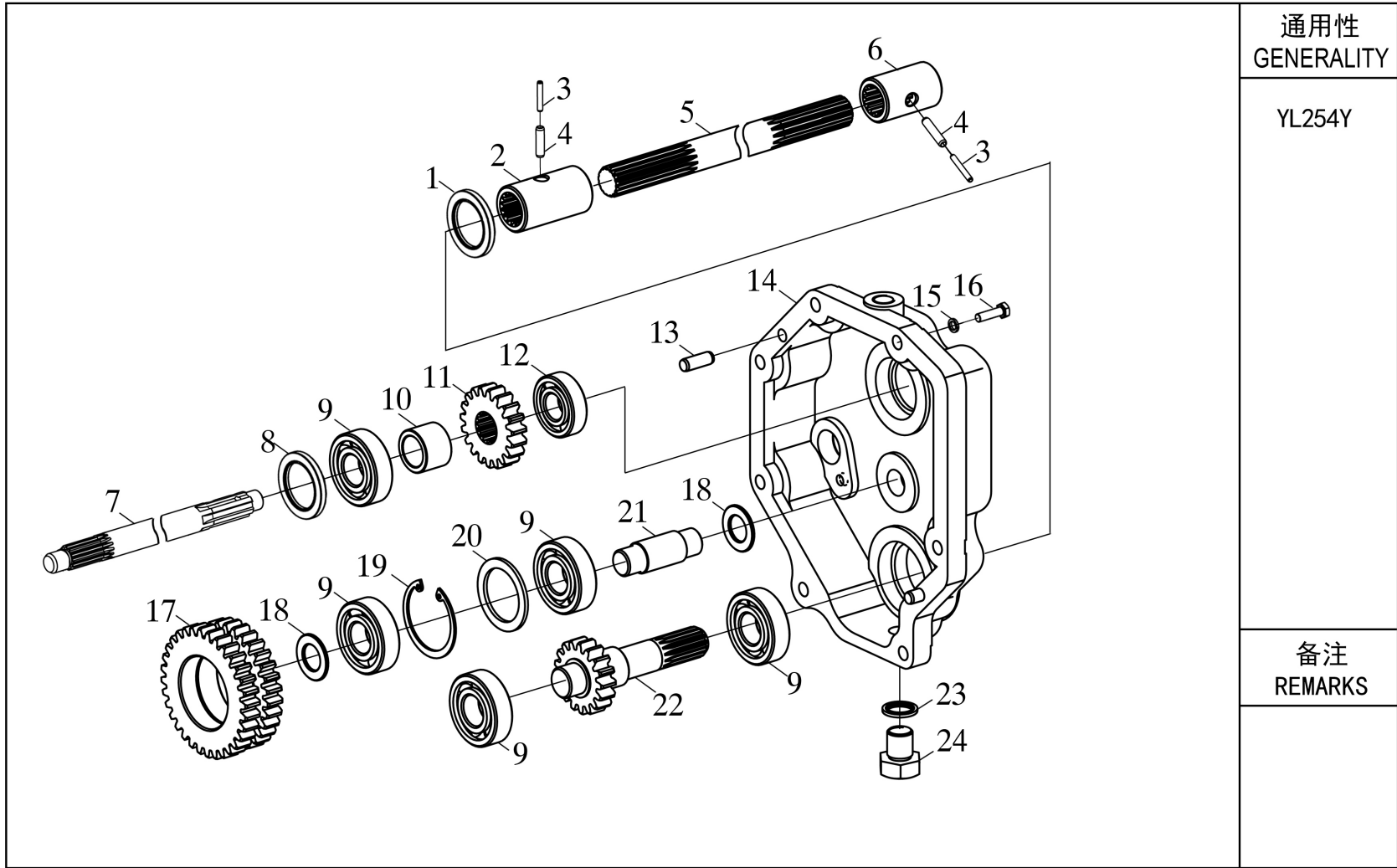
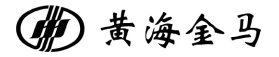
YL254Y

备注
REMARKS

序号 NO.	物料代码 ERP No.	零件名称	PART NAME	数量 Q'TY	通用性 GENERALITY	备注 REMARKS
1	D05-97.1-10	垫圈 10	Washer 10	2	YL254Y	
2	D09-91-3.2X26	开口销 3.2x26	Cotter pin 3.2x26	2	YL254Y	
3	D09-882-10X32	销轴 B10X32	Pin shaft B10X32	2	YL254Y	
4	B254Y.21.261	离合器推杆叉头	Clutch push rod fork	1	YL254Y	
5	D03-6170-10	螺母 M10	Nut M10	1	YL254Y	
6	B254T.21A.262	离合器推杆	Clutch push rod	1	YL254Y	
7	D03-6170-10L	螺母 M10(左)	Nut M10 (left)	1	YL254Y	
8	B400E.43.202	连接叉	Connecting fork	1	YL254Y	
9	B254Y.21A.015	离合器踏杆焊合件	Clutch pedal welded joint	1	YL254Y	
10	D09-879.1-8X28	圆柱销8X28	Cylindrical pin 8X28	1	YL254Y	
11	B254Y.21.021	离合器踏板焊合件	Clutch pedal welded joint	1	YL254Y	
12	B400.21S.115	离合器踏板回位弹簧	Clutch pedal return spring	1	YL254Y	
13	D01-5783-8X45	螺栓	Bolt	2	YL254Y	
14	D03-6170-8	螺母 M8	Nut M8	2	YL254Y	
15	D11-7940.2-6X45°	油杯 45° M6	Oil Cup 45 degrees M6	1	YL254Y	
16	D01-5783-8X20	螺栓 M8X20	Bolt M8X20	3	YL254Y	
17	D05-93-8	垫圈 8	Washer 8	3	YL254Y	
18	D05-97.1-8	垫圈 8	Washer 8	5	YL254Y	
19	B254Y.21A.105	连接架下封板	Lower closing plate of connection frame	1	YL254Y	
20	D05-93-12	垫圈 12	Washer 12	17	YL254Y	

前减速箱总成

FR29-010 Front reducer assembly



通用性
GENERALITY

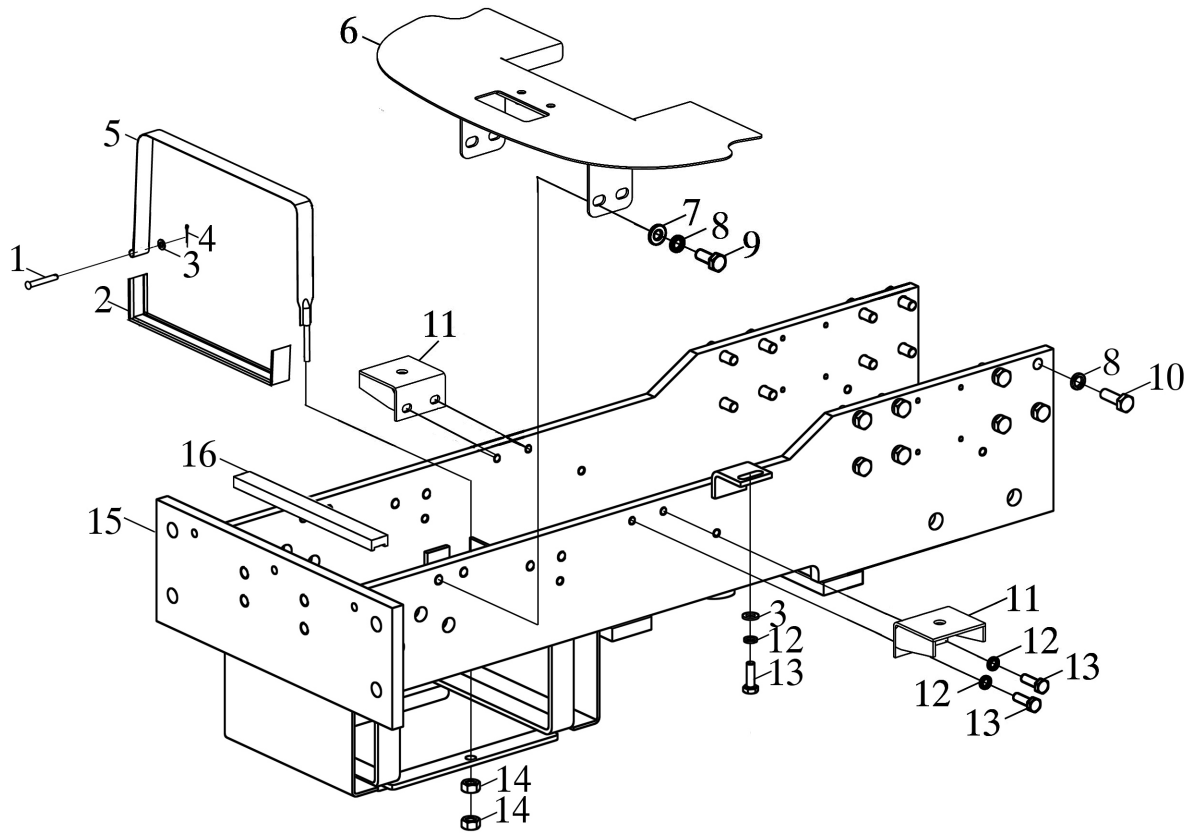
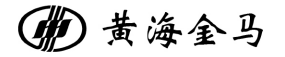
YL254Y

备注
REMARKS

序号 NO.	物料代码 ERP No.	零件名称	PART NAME	数量 Q'TY	通用性 GENERALITY	备注 REMARKS
1	B254Y.37.021	密封圈20×40×7	Seal ring 20 × 40 × 7	1	YL254Y	
2	B254Y.29.116	接合套	Joint sleeve	1	YL254Y	
3	D09-879.1-5X30	弹性圆柱销5X30	Elastic cylindrical pin 5x30	2	YL254Y	
4	D09-879.1-8X30	弹性圆柱销8X30	Elastic cylindrical pin 8x30	2	YL254Y	
5	B254Y.29A.117	前减速传动轴	Front reduction drive shaft	1	YL254Y	
6	B254Y.29A.116	接合套	Joint sleeve	1	YL254Y	
7	B254Y.29A.102	前减速输入轴	Front deceleration input shaft	1	YL254Y	
8	D07-13871.1-FB25X40X7	旋转轴唇形密封圈FB25X40X7	Rotary shaft lip seal ring fb25x40x7	1	YL254Y	
9	D06-276-6204	深沟球轴承6204	Deep groove ball bearing 6204	5	YL254Y	
10	B254Y.29A.104	隔套	Spacer sleeve	1	YL254Y	
11	B254Y.29A.105A	前减速主动齿轮	Front reduction driving gear	1	YL254Y	
12	D06-276-6203	深沟球轴承6203	Deep groove ball bearing 6203	1	YL254Y	
13	D09-119.1-B8X22	圆柱销8X22	Cylindrical pin 8x22	2	YL254Y	
14	B254Y.29A.101	前减速箱壳体	Front reducer housing	1	YL254Y	
15	D05-93-08D	垫圈 8	Washer 8	8	YL254Y	
16	D01-5783-8X30	螺栓M8X30	Bolt m8x30	8	YL254Y	
17	B254Y.29A.109A	前减速中间齿轮	Front reduction intermediate gear	1	YL254Y	
18	B254Y.29.140	隔圈（二）	Spacer (2)	2	YL254Y	
19	D10-893.1-47	孔用挡圈47	Retaining ring 47 for hole	1	YL254Y	
20	B254Y.29A.106	隔圈	Spacer ring	1	YL254Y	

托架总成

BA30-010 Bracket Assembly



通用性
GENERALITY

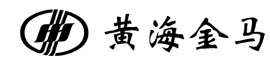
YL254Y

备注
REMARKS

序号 NO.	物料代码 ERP No.	零件名称	PART NAME	数量 Q'TY	通用性 GENERALITY	备注 REMARKS
1	D09-882-B8X50	销轴 B8X50	Pin shaft b8x50	1	YL254Y	
2	B500C.50.133	钢带胶垫	Steel belt rubber pad	1	YL254Y	
3	D05-97.1-08	垫圈 8	Washer 8	2	YL254Y	
4	D09-91-2X16	开口销 2x16	Split pin 2x16	1	YL254Y	
5	B254Y.30.016	电瓶固定钢带焊合件	Battery fixed steel strip weldment	1	YL254Y	
6	B254Y.30.015A	前封板焊合件	Front sealing plate weldment	1	YL254Y	
7	D05-97.1-10	垫圈 10	Washer 10	4	YL254Y	
8	D05-93-10	垫圈 10	Washer 10	20	YL254Y	
9	D01-5783-10X25	螺栓 M10X25	Bolt m10x25	4	YL254Y	
10	D01-5783-10X30	螺栓M10X30	Bolt m10x30	16	YL254Y	
11	B254Y.30.013A	散热器支架焊合件	Radiator bracket weldment	2	YL254Y	
12	D05-93-08	垫圈 8	Washer 8	5	YL254Y	
13	D01-5783-8X25	螺栓 M8X25	Bolt m8x25	5	YL254Y	
14	D03-6170-08	螺母 M8	Nut M8	2	YL254Y	
15	B254Y.30.011B	托架焊合件	Bracket weldment	1	YL254Y	
16	B254Y.30.105	电瓶下胶垫	Battery lower rubber pad	2	YL254Y	

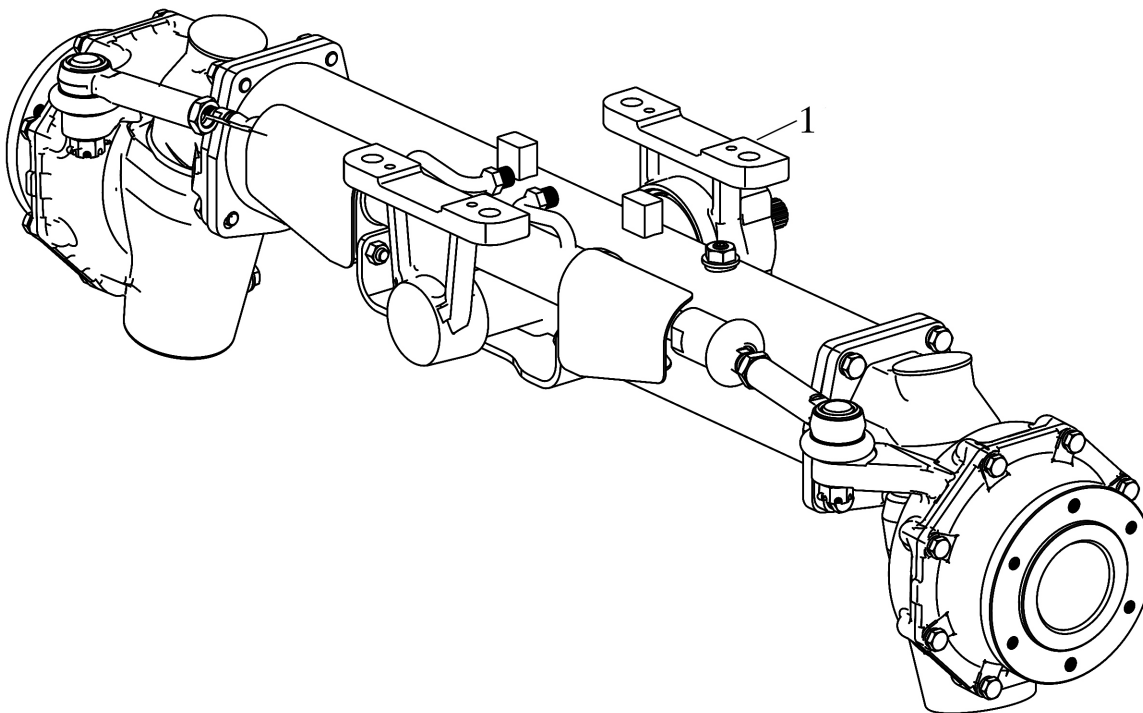
前桥总成

FD31-010 Front Axle Assembly



通用性
GENERALITY

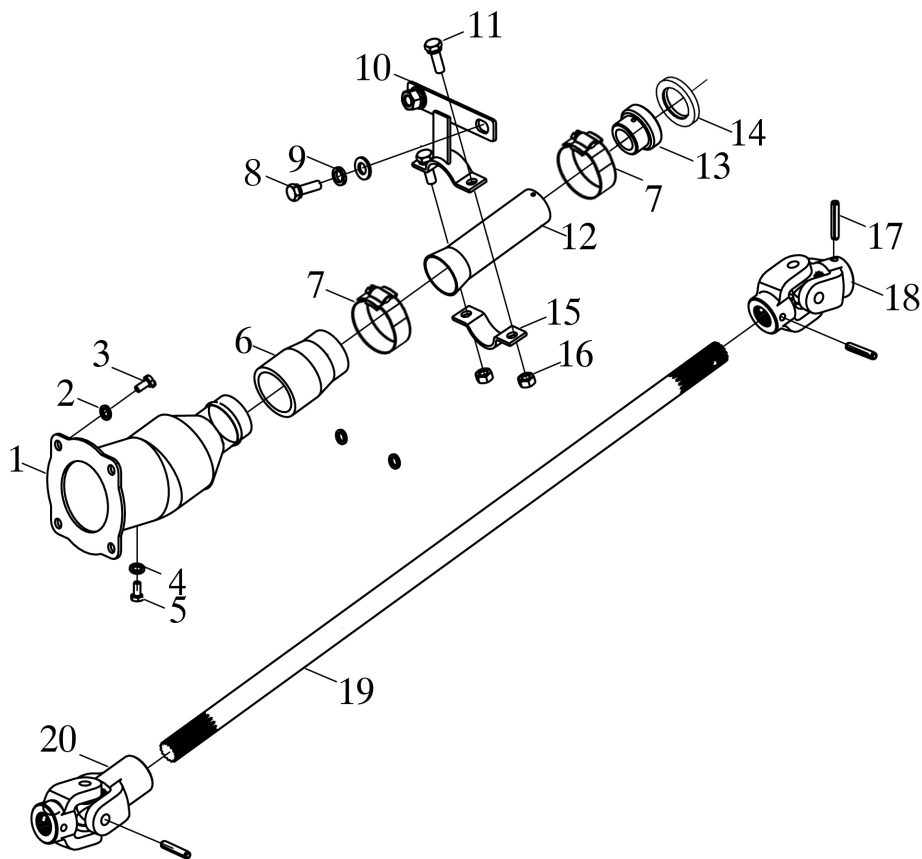
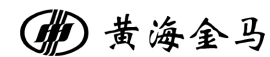
YL254Y



备注
REMARKS

传动轴总成

DS36-010 Drive Shaft Assembly



通用性
GENERALITY

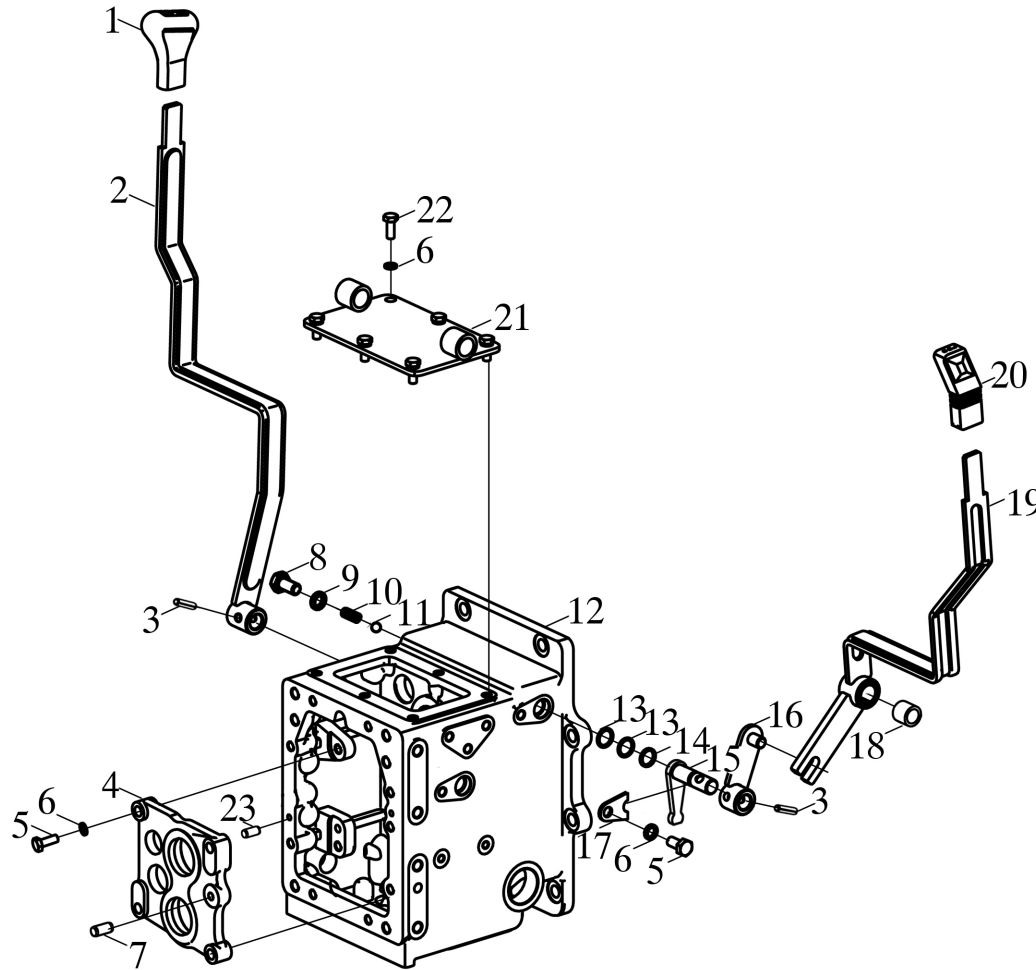
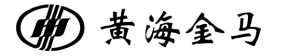
YL254Y

备注
REMARKS

序号 NO.	物料代码 ERP No.	零件名称	PART NAME	数量 Q'TY	通用性 GENERALITY	备注 REMARKS
1	B254Y.36.014	防护罩焊合件	Shield weldment	1	YL254Y	
2	D05-93-08	垫圈 8	Washer 8	6	YL254Y	
3	D01-5783-8X15	螺栓M8X15	Bolt m8x15	4	YL254Y	
4	D17-A-6	组合垫圈 6	Combination washer 6	1	YL254Y	
5	D01-5783-6X12	螺栓M6X12	Bolt m6x12	1	YL254Y	
6	B164Y.31.158	连接胶管	Connecting hose	1	YL254Y	
7	D16-15001-35-51	喉箍 35-51	Hose clamp 35-51	2	YL254Y	
8	D01-5783-10X25	螺栓 M10X25	Bolt m10x25	2	YL254Y	
9	D05-93-10	垫圈 10	Washer 10	2	YL254Y	
10	B254Y.36.012	固定支架焊合件	Fixed bracket weldment	1	YL254Y	
11	D01-5783-8X25	螺栓 M8X25	Bolt m8x25	2	YL254Y	
12	B254Y.36.105	防护套管	Protective sleeve	1	YL254Y	
13	B164Y.31.162-1	密封圈保持架	Seal ring holder	1	YL254Y	
14	D07-9877.1- 88X65X7.5	油封FB20x35x7	Oil seal fb20x35x7	1	YL254Y	
15	B254Y.36.102	套管包箍	Casing hoop	1	YL254Y	
16	D03-6170-8	螺母M8	Nut M8	2	YL254Y	
17	D09-879.1-6X36	圆柱销	Cylindrical pin	3	YL254Y	
18	B164Y.31.019A	变速箱端万向节	Universal joint at transmission end	1	YL254Y	
19	B254T.36A.101A	传动轴	transmission shaft	1	YL254Y	
20	B164Y.31.018A	差速器端万向节	Differential end universal joint	1	YL254Y	

变速箱总成

TR37-010 Transmission Assembly



通用性
GENERALITY

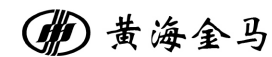
YL254Y

备注
REMARKS

序号 NO.	物料代码 ERP No.	零件名称	PART NAME	数量 Q'TY	通用性 GENERALITY	备注 REMARKS
1	B254Y.37.270	前驱动操纵手柄总成	Front drive handle assembly	1	YL254Y	
2	B254Y.37A.035	前驱动操纵杆焊合件	Front drive lever weldment	1	YL254Y	
3	D09-879.4-8*30	弹性圆柱销8X30	Elastic cylindrical pin 8x30	2	YL254Y	
4	B254Y.37A.107	前盖板	Front cover	1	YL254Y	
5	D01-5783-10X35	螺栓 MX10X35	Bolt mx10x35	4	YL254Y	
6	D05-93-10	垫圈 10	Washer 10	11	YL254Y	
7	D09-119.1-8X20	圆柱销 8X20	Cylindrical pin 8x20	1	YL254Y	
8	B254Y.37.169	前驱动定位螺栓	Front drive set bolt	1	YL254Y	
9	D17-982-10	组合密封垫圈 10	Combination sealing washer 10	1	YL254Y	
10	B254Y.37.163	定位弹簧	Positioning spring	1	YL254Y	
11	D13-308-8	钢球 8	Steel ball 8	1	YL254Y	
12	B254Y.37A.101	变速箱壳体	Transmission housing	1	YL254Y	
13	D07-3452.1-16X2.65	O形圈 16x2.65	O-ring 16x2.65	2	YL254Y	
14	B254Y.37.166	挡圈	Retaining ring	1	YL254Y	
15	B254Y.37.025	副变速拨杆焊合件	Weldment of vice shift lever	1	YL254Y	
16	B254Y.37.028	副变速摇臂焊合件	Weldment of auxiliary variable speed rocker arm	1	YL254Y	
17	B254Y.37.161	拨叉轴定位板	Locating plate of shift fork shaft	1	YL254Y	
18	B254Y.37.261	衬套	bushing	1	YL254Y	
19	B254Y.37.033	副变速操纵杆焊合件	Weldment of auxiliary speed control	1	YL254Y	
20	B254Y.37.262	副变速操纵手柄	Auxiliary speed control handle	1	YL254Y	

变速箱总成

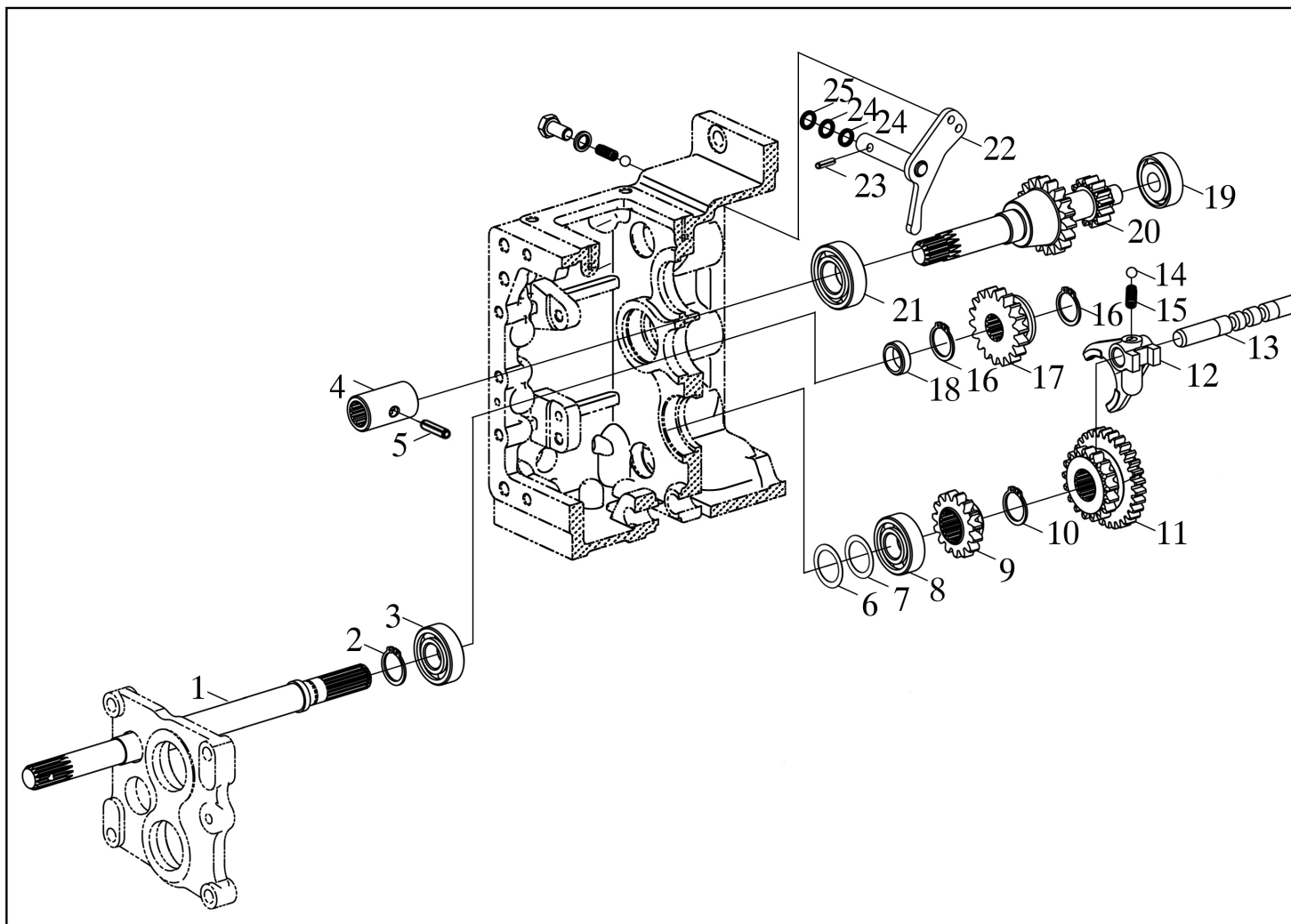
TR37-020 Transmission Assembly



通用性
GENERALITY

YL254Y

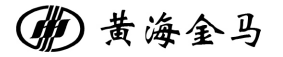
备注
REMARKS



序号 NO.	物料代码 ERP No.	零件名称	PART NAME	数量 Q'TY	通用性 GENERALITY	备注 REMARKS
1	B254Y.37A.102	前驱动传动轴	Front drive shaft	1	YL254Y	
2	D10-893.1-47	孔用弹性挡圈 47	Retaining ring for hole 47	1	YL254Y	
3	D06-276-6204	深沟球轴承	Deep groove ball bearing	1	YL254Y	
4	B254Y.37A.116	内啮合套	Inner meshing sleeve	1	YL254Y	
5	D09-879.1-8X30	圆柱销 8X30	Cylindrical pin 8x30	1	YL254Y	
6	B254Y.37A.170	垫圈	Washer	1	YL254Y	
7	B254Y.37A.171/172/173	调整垫圈	Adjusting washer	按需	YL254Y	
8	D06-292-7303B	角接触球轴承7303B	Angular contact ball bearing 7303b	1	YL254Y	
9	B254Y.37A.132	前驱动主动齿轮	Front driving gear	1	YL254Y	
10	B804Y.29.118	挡圈 25	Retaining ring 25	1	YL254Y	
11	B254Y.37A.133	高低档被动双联齿轮	High and low gear driven double gear	1	YL254Y	
12	B254Y.37.162	副变速拨叉	Auxiliary shift fork	1	YL254Y	
13	B254Y.37A.164	高低档拨叉轴	High low shift fork shaft	1	YL254Y	
14	D13-308-8	钢球 8	Steel ball 8	1	YL254Y	
15	254Y.37.163	定位弹簧	Positioning spring	1	YL254Y	
16	D10-894.1-20	挡圈 20	Retaining ring 20	2	YL254Y	
17	B254Y.37A.135	前驱动被动齿轮	Front drive driven gear	1	YL254Y	
18	B254Y.37A.122	隔圈	Spacer ring	1	YL254Y	
19	D06-276-6302	轴承 6302	Bearing 6302	1	YL254Y	
20	B254Y.37A.130	高低档主动双联齿轮轴	High and low gear drive double gear	1	YL254Y	

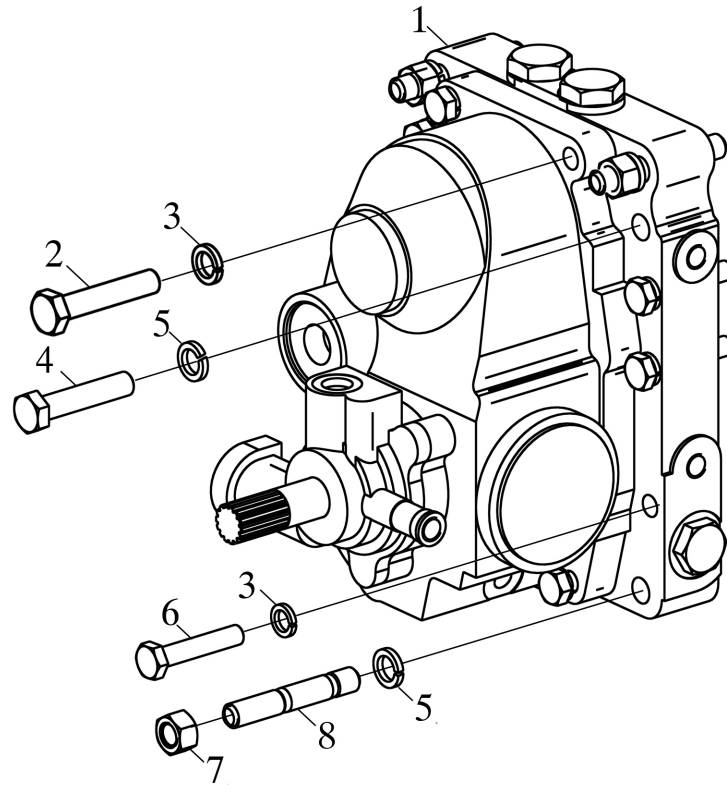
HST静液压传动器

TR37-030 HST Hydrostatic Actuator



通用性
GENERALITY

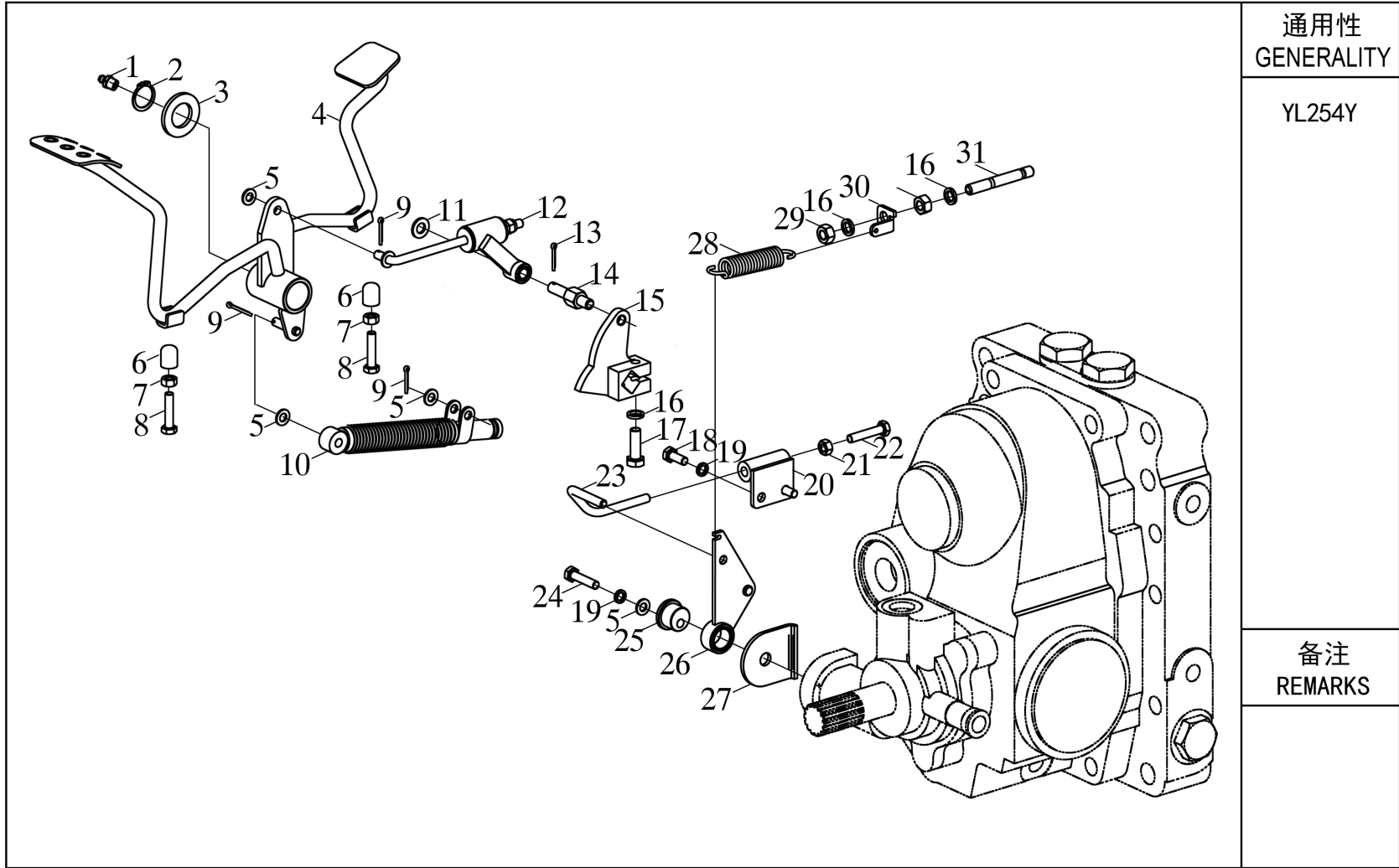
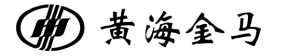
YL254Y



备注
REMARKS

HST操纵机构总成

TR37-040 HST Control Mechanism Assembly



通用性
GENERALITY

YL254Y

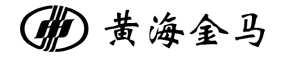
备注
REMARKS

序号 NO.	物料代码 ERP No.	零件名称	PART NAME	数量 Q'TY	通用性 GENERALITY	备注 REMARKS
1	D11-7940.1-10X1	油杯 M10X1	Oil cup M10x1	1	YL254Y	
2	D10-894-24	轴用挡圈 24	Shaft retaining ring 24	1	YL254Y	
3	D05-97.1-24	垫圈 24	Washer 24	1	YL254Y	
4	B254Y.37A.040	HST踏板焊合件	HST pedal weldment	1	YL254Y	
5	D05-97.1-08	垫圈 8	Washer 8	4	YL254Y	
6	B254Y.37A.188	限位套	Limiting sleeve	2	YL254Y	
7	D03-6170-08	螺母 M8	Nut M8	2	YL254Y	
8	D01-5783-8X35	螺栓 M8X35	Bolt m8x35	2	YL254Y	
9	D09-91-2X16	开口销 2x16	Split pin 2x16	3	YL254Y	
10	B254Y.37A.050	阻尼杆总成	Damping rod assembly	1	YL254Y	
11	D05-97.1-10	垫圈 10	Washer 10	1	YL254Y	
12	B254Y.37A.046	拉杆组合件	rod assembly	1	YL254Y	
13	D09-91-3.2X20	开口销 3.2x20	Split pin 3.2x20	1	YL254Y	
14	B254Y.37A.185	HST摇臂轴	HST rocker shaft	1	YL254Y	
15	B254Y.37A.181	HST控制摇臂	HST control rocker arm	1	YL254Y	
16	D05-93-10	垫圈 10	Washer 10	4	YL254Y	
17	D01-5783-10X30-8.8	螺栓M10X30-8.8	Bolt m10x30-8.8	1	YL254Y	
18	D01-5783-8X16	螺栓M8X16	Bolt m8x16	2	YL254Y	
19	D05-93-08	垫圈 8	Washer 8	3	YL254Y	
20	B254Y.37A.051	中立支架焊合件	Neutral bracket weldment	1	YL254Y	

序号 NO.	物料代码 ERP No.	零件名称	PART NAME	数量 Q'TY	通用性 GENERALITY	备注 REMARKS
21	D03-6171-8X1	螺母 M8X1	Nut m8x1	1	YL254Y	
22	D01-5786-8X1X40	螺栓 M8X1X40	Bolt m8x1x40	1	YL254Y	
23	B254Y.37A.193	中立定位杆	Neutral positioning rod	1	YL254Y	
24	D01-5783-8X40	螺栓M8X40	Bolt m8x40	1	YL254Y	
25	B254Y.37A.191	摇臂固定轴	Fixed shaft of rocker arm	1	YL254Y	
26	B254Y.37A.042	中立摇臂组合件	Neutral rocker arm assembly	1	YL254Y	
27	B254Y.37A.186	垫板	Backing plate	1	YL254Y	
28	B254Y.37A.183	回位弹簧	Return spring	1	YL254Y	
29	D03-6171-10X1.25	螺母 M10X1.25	Nut m10x1.25	2	YL254Y	
30	B254Y.37A.182	回位弹簧固定板	Return spring retaining plate	1	YL254Y	
31	D04-899-10X1.25X65-10.9	双头螺柱M10X1.25X65-10.9	Double head stud m10x1.25x65-10.9	1	YL254Y	

后桥总成

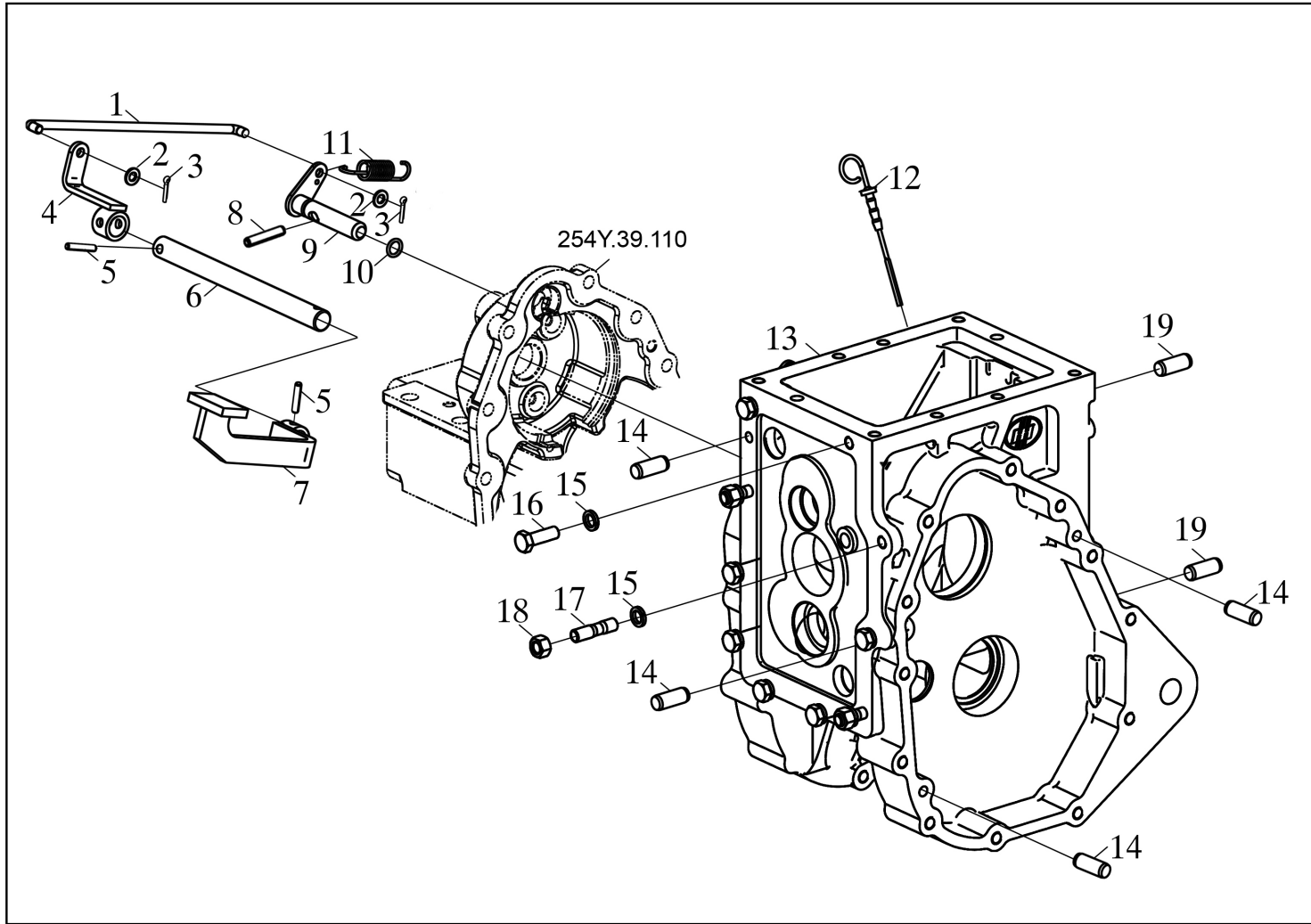
RA38-010 Rear Axle Assembly



通用性
GENERALITY

YL254Y

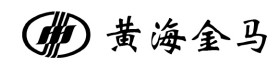
备注
REMARKS



序号 NO.	物料代码 ERP No.	零件名称	PART NAME	数量 Q'TY	通用性 GENERALITY	备注 REMARKS
1	B254Y.38A.117	拉杆	pull rod	1	YL254Y	
2	D09-91-2X16	开口销2x16	Split pin 2x16	2	YL254Y	
3	D05-97.1-8	垫圈 8	Washer 8	2	YL254Y	
4	B254Y.38.026	差速器踏板摇臂焊合件	Differential pedal rocker arm weldment	1	YL254Y	
5	D09-879.4-8X30	圆柱销 8x30	Cylindrical pin 8x30	2	YL254Y	
6	B254Y.38.122	差速器踏板轴	Differential pedal shaft	1	YL254Y	
7	B254Y.38A.024	差速器踏板组合件	Differential pedal assembly	1	YL254Y	
8	D09-119.1-10X28	圆柱销 10x28	Cylindrical pin 10x28	1	YL254Y	
9	B254Y.38.022	拨叉轴焊合件	Shift fork shaft weldment	1	YL254Y	
10	D07-3452.1-12.5X2.65	O形圈12.5x2.65	O形圈12.5X2.65	1	YL254Y	
11	B254Y.38.107	拨叉弹簧	Fork spring	1	YL254Y	
12	B254T.38.023	油尺合件	Oil dipstick assembly	1	YL254Y	
13	B254Y.38A.101	后桥壳体	Rear axle housing	1	YL254Y	
14	D09-119.1-10X18	圆柱销 10X18	Cylindrical pin 10x18	6	YL254Y	
15	D05-93-12	垫圈 12	Washer 12	10	YL254Y	
16	D01-5783-12X35	螺栓 M12X35	Bolt m12x35	7	YL254Y	
17	D04-899-AM12X32	双头螺柱 AM12X32	Double head stud am12x32	3	YL254Y	
18	D03-6170-12	螺母 M12	Nut M12	3	YL254Y	
19	D09-119.1-8X18	圆柱销 8x18	Cylindrical pin 8x18	2	YL254Y	

后桥总成

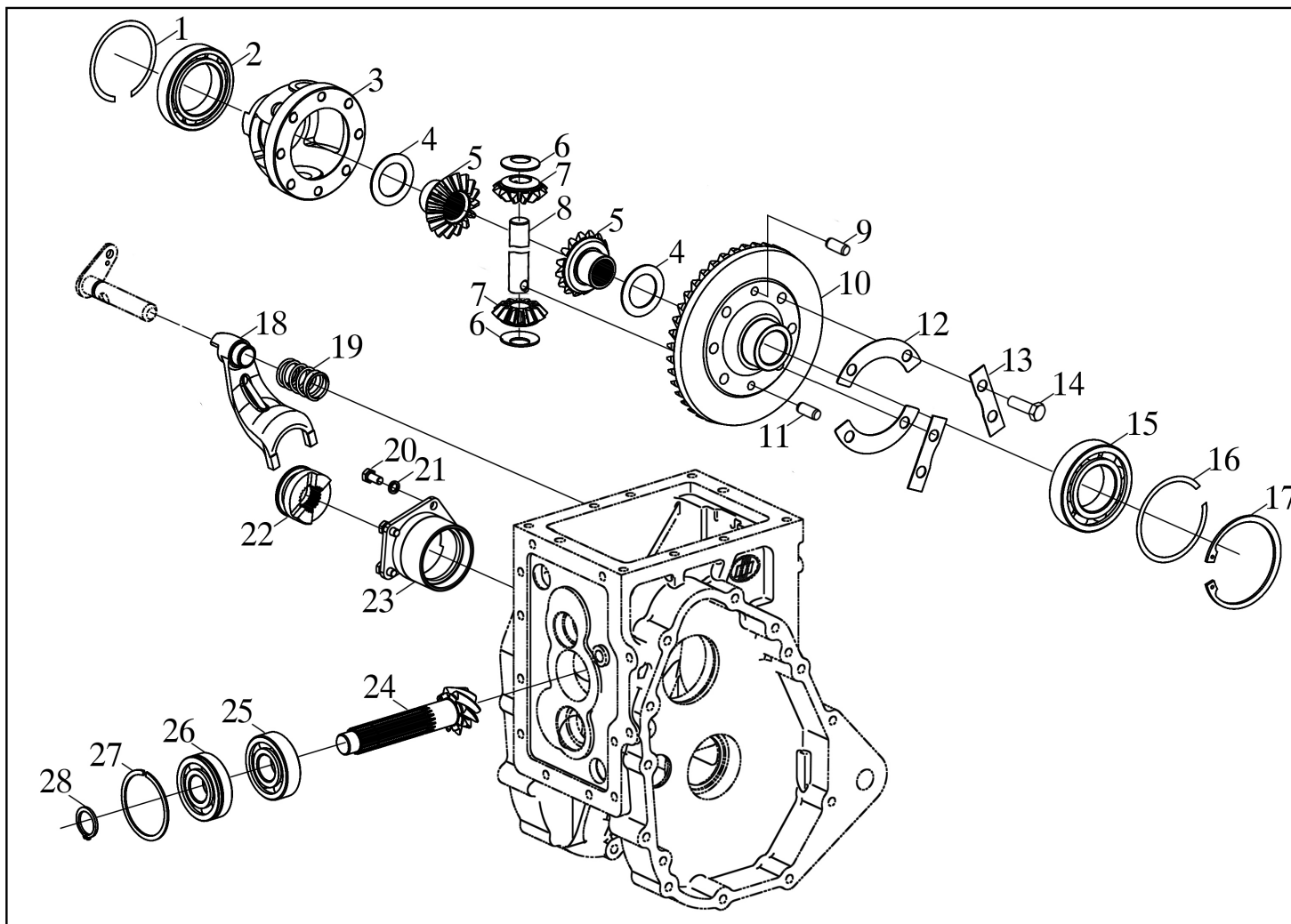
RA38-020 Rear Axle Assembly



通用性
GENERALITY

YL254Y

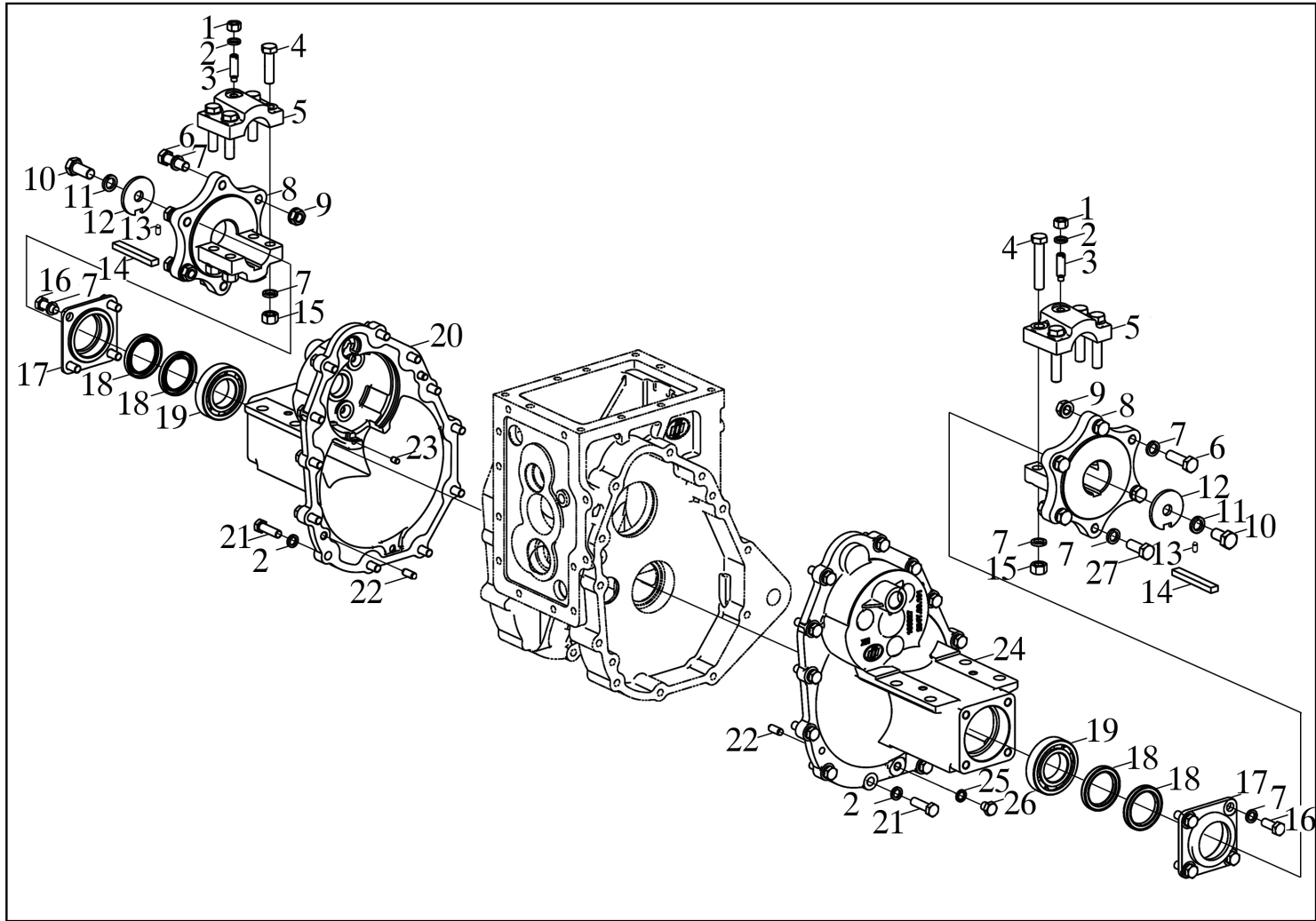
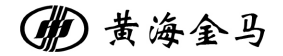
备注
REMARKS



序号 NO.	物料代码 ERP No.	零件名称	PART NAME	数量 Q'TY	通用性 GENERALITY	备注 REMARKS
1	B254Y.38.111/112/11	小调整垫片	Small adjusting gasket	按需	YL254Y	
2	D06-276-6010	深沟球轴承6010	Deep groove ball bearing 6010	1	YL254Y	
3	B254Y.38.211	差速器壳体	Differential housing	1	YL254Y	
4	B254Y.38.217	半轴齿轮垫片	Half shaft gear gasket	2	YL254Y	
5	B254Y.38.214	半轴齿轮	Half shaft gear	2	YL254Y	
6	B254Y.38.216	行星齿轮垫片	Planetary gear gasket	2	YL254Y	
7	B254Y.38.213	行星齿轮	planet gear	2	YL254Y	
8	B254Y.38.215	行星轴	Planetary shaft	1	YL254Y	
9	D09-119.1-8X18	圆柱销8X18	Cylindrical pin 8x18	1	YL254Y	
10	B254Y.38.212	主传动被动圆锥齿轮	Main drive driven bevel gear	1	YL254Y	
11	D09-119.1-8X40	圆柱销8X40	Cylindrical pin 8x40	1	YL254Y	
12	B254Y.38.219	锁紧垫片II	Locking gasket II	2	YL254Y	
13	B254Y.38.218	锁紧垫片I	Locking gasket I	2	YL254Y	
14	D01-5786-10X1X25	螺栓 M10X1X25	Bolt m10x1x25	6	YL254Y	
15	D06-276-6209	深沟球轴承6209	Deep groove ball bearing 6209	1	YL254Y	
16	B254Y.38.114/115/11	大调整垫片	Large adjusting gasket	按需	YL254Y	
17	D10-893.1-85	孔用弹性挡圈85	Circlip 85 for hole	1	YL254Y	
18	B254Y.38.108	差速锁拨叉	Differential lock fork	1	YL254Y	
19	B254Y.38.107	拨叉弹簧	Fork spring	1	YL254Y	
20	D01-5783-10X30	螺栓 M10X30	Bolt M10X30	4	YL254Y	

末端传动壳体

FD39-010 Final Drive Housing



通用性
GENERALITY

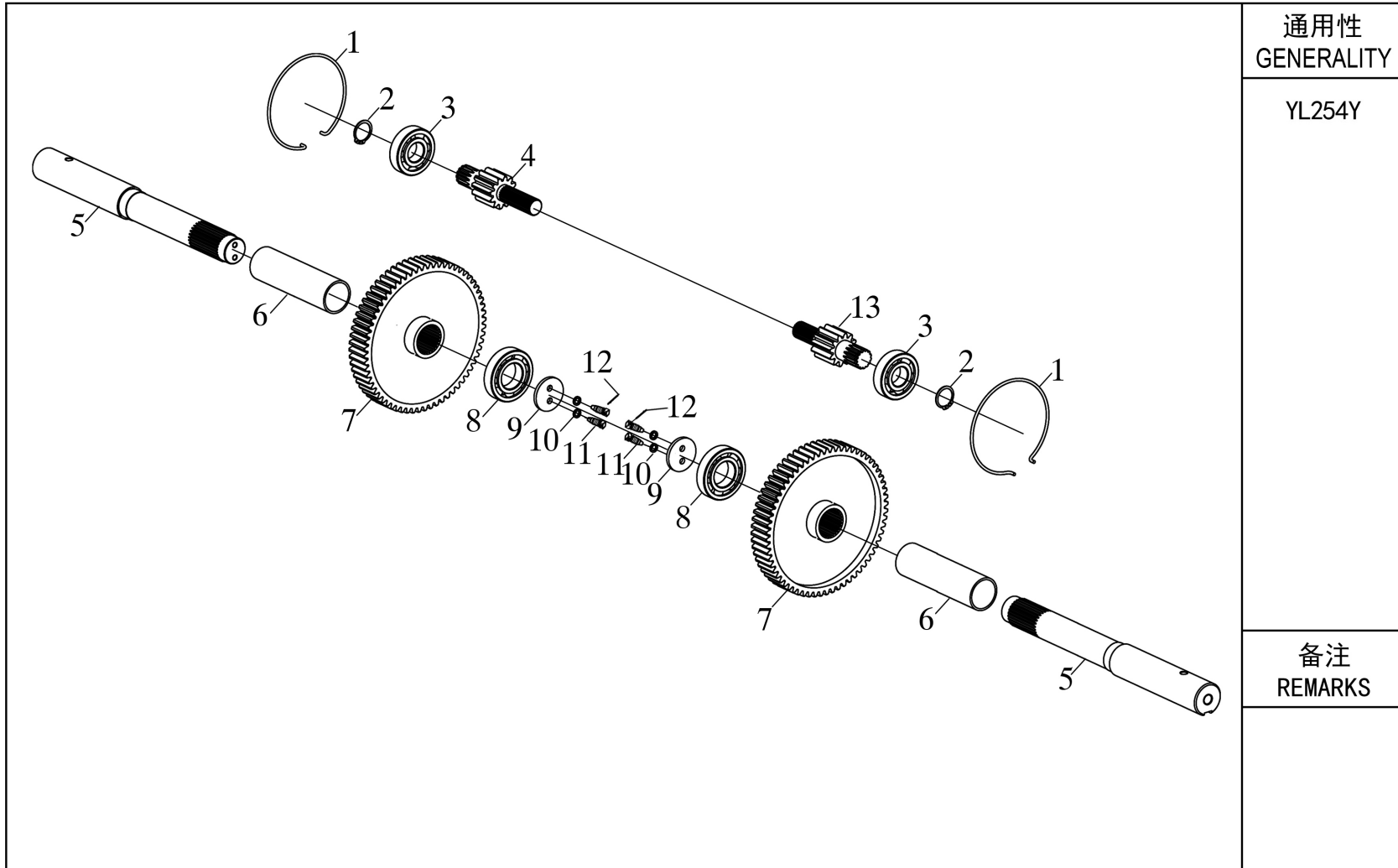
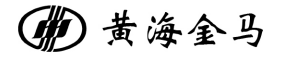
YL254Y

备注
REMARKS

序号 NO.	物料代码 ERP No.	零件名称	PART NAME	数量 Q'TY	通用性 GENERALITY	备注 REMARKS
1	D03-6170-M12	1型立角螺母M12	Type 1 vertical angle nut M12	2	YL254Y	
2	D05-93-12	垫圈 12	Washer 12	34	YL254Y	
3	D02-75-12X42	紧定螺钉M12X42	Set screw m12x42	2	YL254Y	
4	D01-5782-14X45	螺栓 M14X45	Bolt m14x45	8	YL254Y	
5	B160.34.103-2	驱动轮轮毂盖	Drive wheel hub cover	2	YL254Y	
6	D01-5783-14X45	螺栓M14X45	Bolt m14x45	4	YL254Y	
7	D05-93-14	垫圈 14	Washer 14	20	YL254Y	
8	B160.34.102-2	驱动轮轮毂	Drive wheel hub	2	YL254Y	
9	D03-DTF-CO.M14x2-10F3	施必牢六角螺母M14X2-10F3	Screw nut m14x2-10f3	4	YL254Y	
10	D01-5783-16X35	螺栓M16X35	Bolt m16x35	2	YL254Y	
11	D05-93-16	垫圈 16	Washer 16	2	YL254Y	
12	B160.37.216	挡圈	Retaining ring	2	YL254Y	
13	D09-119.1-6X12	圆柱销 6X12	Cylindrical pin 6x12	2	YL254Y	
14	B160.37.215-2	平键14X9X104	Flat key 14x9x104	2	YL254Y	
15	D01-6170-14	螺母 M14	Nut M14	8	YL254Y	
16	D01-5783-12X30	螺栓 M12X30	Bolt m12x30	8	YL254Y	
17	B254Y.39.112	油封座	Oil seal seat	2	YL254Y	
18	D07-13871-FB50X68X8F	旋转轴唇形密封圈FB50X68X8F	Rotating shaft lip seal fb50x68x8f	4	YL254Y	
19	D06-276-6209	深沟球轴承6209	Deep groove ball bearing 6209	2	YL254Y	
20	B254Y.39.110	右半轴壳体	Right axle housing	1	YL254Y	

末端传动轴

FD39-020 Final Drive Shaft



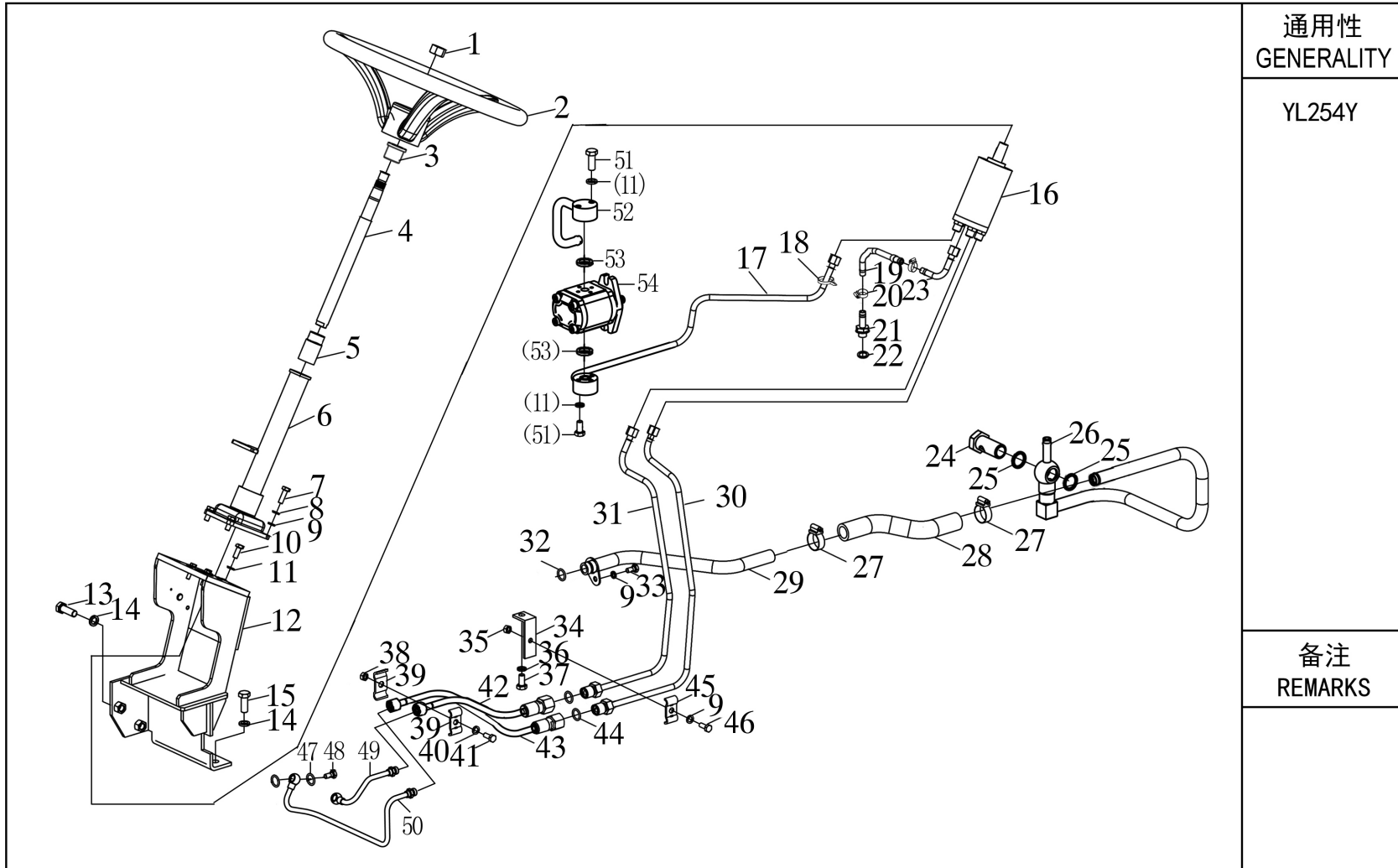
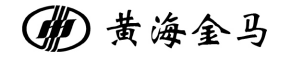
通用性
GENERALITY

YL254Y

备注
REMARKS

序号 NO.	物料代码 ERP No.	零件名称	PART NAME	数量 Q'TY	通用性 GENERALITY	备注 REMARKS
1	B254Y.39.107	卡簧	Snap ring	2	YL254Y	
2	D10-894.1-30	轴用弹性挡圈30	Elastic ring for shaft 30	2	YL254Y	
3	D06-276-6306	轴承6306	Bearing 6306	2	YL254Y	
4	B254Y.39.105	右主动齿轮	Right driving gear	1	YL254Y	
5	B254Y.39.108	半轴	Half shaft	2	YL254Y	
6	B254Y.39.109	隔套	Spacer sleeve	2	YL254Y	
7	B254Y.39.104	被动齿轮	Passive gear	1	YL254Y	
8	D06-294-QJ208	滚动轴承QJ2808	Rolling bearing qj2808	2	YL254Y	
9	B254Y.39.103	挡圈	Retaining ring	2	YL254Y	
10	D05-93-8	垫圈 8	Washer 8	4	YL254Y	
11	D01-32.1-8X20	六角头带孔螺栓 M8X20	Hexagon bolt with hole m8x20	4	YL254Y	
12	D12-3083-ZD2X100	镀锌钢丝ZD2X100	Galvanized steel wire zd2x100	2	YL254Y	
13	B254Y.39.102	左主动齿轮	Left driving gear	1	YL254Y	

ST40-010 液压转向系统总成
Hydraulic Steering System Assembly



通用性
GENERALITY

YL254Y

备注
REMARKS

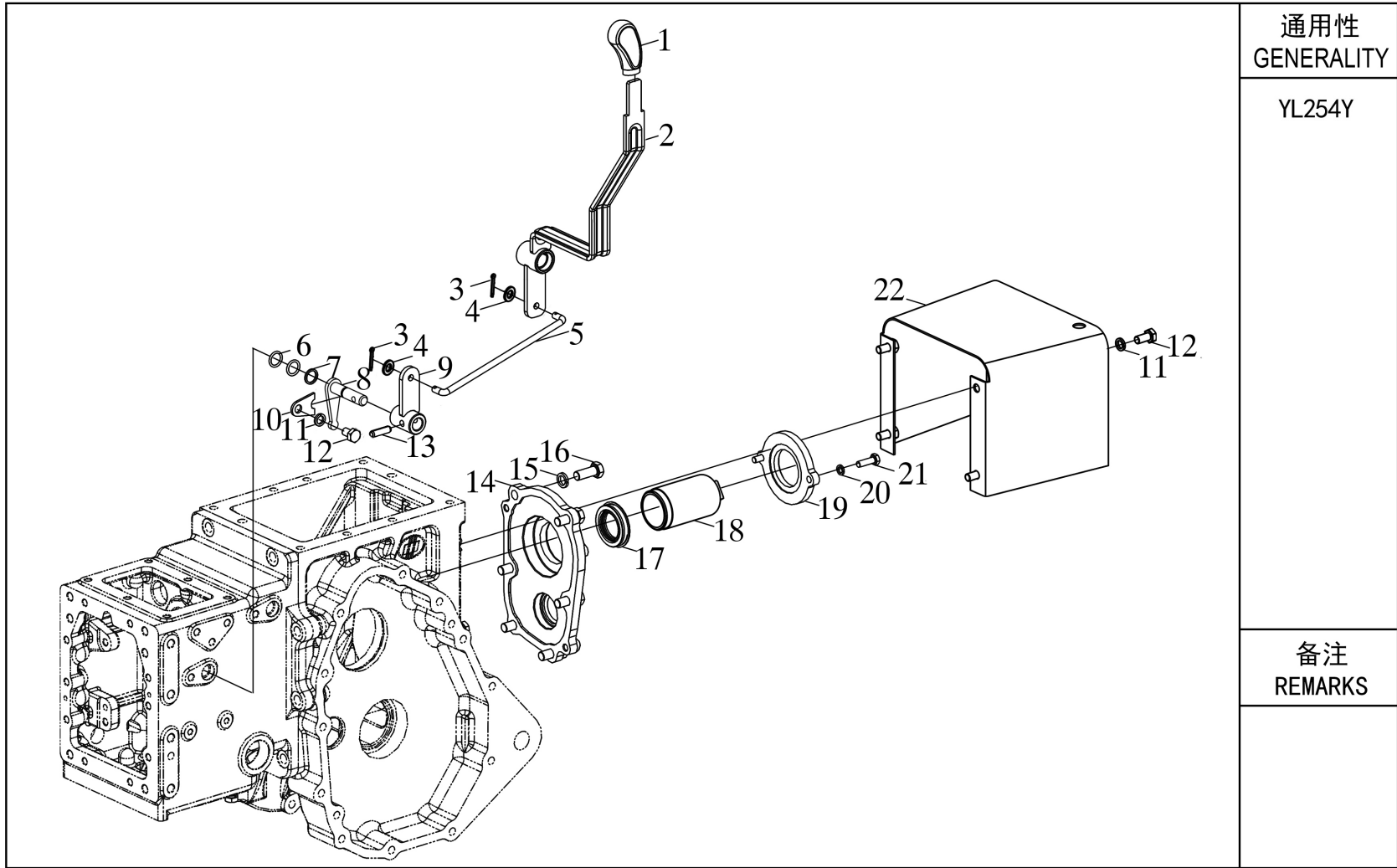
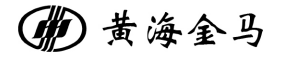
序号 NO.	物料代码 ERP No.	零件名称	PART NAME	数量 Q'TY	通用性 GENERALITY	备注 REMARKS
1	D03-6171-16X15	螺母 M16X1.5	Nut m16x1.5	1	YL254Y	
2	B160.40.019B	方向盘总成	Steering wheel assembly	1	YL254Y	
3	B160.40.104-1	上油封	Upper oil seal	1	YL254Y	
4	B254Y.40.191	转向轴	Steering shaft	1	YL254Y	
5	B254Y.40.030	转向器连接套焊合件	Steering gear connecting sleeve weldment	1	YL254Y	
6	B254Y.40.023A	转向管柱焊合件	Steering column weldment	1	YL254Y	
7	D01-5783-8X25	螺栓 M8X25	Bolt m8x25	4	YL254Y	
8	D05-97.1-08	垫圈 8	Washer 8	4	YL254Y	
9	D05-93-08	垫圈 8	Washer 8	6	YL254Y	
10	D01-5783-6X25	螺栓 M6X25	Bolt m6x25	4	YL254Y	
11	D05-93-06	垫圈 6	Washer 6	9	YL254Y	
12	B254Y.40.024	转向器支架焊合件	Steering gear bracket weldment	1	YL254Y	
13	D01-5783-12X35	螺栓 M12X35	Bolt m12x35	3	YL254Y	
14	D05-93-12	垫圈 12	Washer 12	5	YL254Y	
15	D01-5783-12X30	螺栓 M12X30	Bolt m12x30	2	YL254Y	
16	B254Y.40.029	全液压转向器	Full hydraulic steering gear	1	YL254Y	
17	B254Y.40.013A	转向器进油管焊合件	Steering gear oil inlet pipe weldment	1	YL254Y	
18	Z03-407	尼龙扎带8x300	Nylon tie 8x300	1	YL254Y	
19	D32-10637-B10X500	胶管 B10X500	Hose b10x500	1	YL254Y	
20	D16-8870-20	喉箍 20	Hose clamp 20	2	YL254Y	

序号 NO.	物料代码 ERP No.	零件名称	PART NAME	数量 Q'TY	通用性 GENERALITY	备注 REMARKS
21	B254Y.40.105	转向器回油管接管	Steering gear return pipe connector	1	YL254Y	
22	D17-982-14	组合密封垫圈 14	Combination seal washer 14	1	YL254Y	
23	B254Y.40.016	转向器回油管焊合件	Steering gear oil return pipe weldment	1	YL254Y	
24	B254Y.40A.101	铰接螺栓M24X. 5	Hinge bolt m24x. 5	1	YL254Y	
25	D17-982-24	组合密封垫圈 24	Combination sealing washer 24	2	YL254Y	
26	B254Y.40A.011	系统回油管后段焊合件	System oil return pipe rear section weldment	1	YL254Y	
27	D16-8870-32	喉箍 32	Hose clamp 32	2	YL254Y	
28	B254Y.40A.102	输油胶管	Oil hose	1	YL254Y	
29	B254Y.40A.012	系统回油管前段焊合件	System oil return pipe front section weldment	1	YL254Y	
30	B254Y.40.018A	转向油缸右油管焊合件	Right oil pipe weldment of steering cylinder	1	YL254Y	
31	B254Y.40.017A	转向油缸左油管焊合件	Left oil pipe weldment of steering cylinder	1	YL254Y	
32	D07-3452.1-17X2.65G	O形圈17x2. 65G	O-ring 17x2.65g	1	YL254Y	
33	D01-5783-8X16	螺栓 M8X16	Bolt m8x16	1	YL254Y	
34	B254Y.40.103	管夹安装板	Clamp mounting plate	1	YL254Y	
35	D03-6170-08	螺母 M8	Nut M8	1	YL254Y	
36	D05-93-10	垫圈 10	Washer 10	1	YL254Y	
37	D1-5783-10X20	螺栓 M10X20	Bolt m10x20	1	YL254Y	
38	D03-6170-06	螺母M6	NUT M6	1	YL254Y	
39	B400N.48.011	启动马达电缆夹	Starter motor cable clamp	2	YL254Y	
40	D05-93-06	垫圈 6	Washer 6	1	YL254Y	

序号 NO.	物料代码 ERP No.	零件名称	PART NAME	数量 Q'TY	通用性 GENERALITY	备注 REMARKS
41	D01-5783-6X20	螺栓 M6X20	Bolt m6x20	1	YL254Y	
42	B404C.31.017	转向油管总成	Steering Tubing Assembly	1	YL254Y	
43	B404C.31.017	转向油管总成	Steering Tubing Assembly	1	YL254Y	
44	D07-3452.1-10.6X2.65	O形圈 10x2.65G	O-ring 10x2.65g	2	YL254Y	
45	B504YZ.40.105	转向油管夹	Steering tubing clamp	1	YL254Y	
46	D01-5783-8X30	螺栓 M8X30	Bolt m8x30	1	YL254Y	
47	D17-982-14	组合密封垫圈 14	Combination seal washer 14	4	YL254Y	
48	B300.50.153	铰接螺栓	Articulated Bolt	2	YL254Y	
49	B254Y.40.014A	油缸左油管焊合件	Left oil pipe of oil cylinder	1	YL254Y	
50	B254Y.40.015A	油缸右油管焊合件	Right oil pipe of oil cylinder	1	YL254Y	
51	D01-5783-6X20	螺栓 M6X35	Bolt m6x35	5	YL254Y	
52	B254Y.40.020A	泵进油管焊合件	Pump inlet pipe	1	YL254Y	
53	D07-3452.1-13.2X1.80	O形圈 13.2X1.80	O-ring 13.2X1.80	2	YL254Y	
54	B254Y.40A.014A	齿轮泵5.1	Gear pump 5.1	1	YL254Y	

动力输出总成

PT41-010 Power Take-off Assembly



通用性
GENERALITY

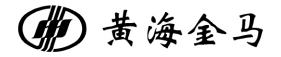
YL254Y

备注
REMARKS

序号 NO.	物料代码 ERP No.	零件名称	PART NAME	数量 Q'TY	通用性 GENERALITY	备注 REMARKS
1	B254Y.41A.126	后置动力输出操纵手柄	Rear power take-off handle	1	YL254Y	
2	B254Y.41A.021	动力输出操纵杆组合件	Power take-off lever assembly	1	YL254Y	
3	D09-91-2X16	开口销 2X16	Split pin 2x16	2	YL254Y	
4	D05-97.1-08	垫圈 8	Washer 8	2	YL254Y	
5	B254Y.41A.030	拉杆焊合件	Tie Rod fitting	1	YL254Y	
6	D07-3452.1-16X2.65	O形圈 16x2.65	O-ring 16x2.65	2	YL254Y	
7	B254Y.37.166	挡圈	Retaining ring	1	YL254Y	
8	B254Y.41A.025	摇臂转轴焊合件	Rocker shaft weldment	1	YL254Y	
9	B254Y.41A.028	动力输出摇臂焊合件	Power take-off rocker arm weldment	1	YL254Y	
10	B254Y.37.161	拨叉轴定位板	Locating plate of shift fork shaft	1	YL254Y	
11	D05-93-10	垫圈 10	Washer 10	5	YL254Y	
12	D01-5783-10X20	螺栓 M10X20	Bolt m10x20	5	YL254Y	
13	D09-879.4-8X30	圆柱销 8x30	Cylindrical pin 8x30	1	YL254Y	
14	B254Y.41A.113	后置动力输出盖板	Rear power take-off cover plate	1	YL254Y	
15	D05-93-12	垫圈 12	Washer 12	6	YL254Y	
16	D01-5783-12X30	螺栓M12X30	Bolt m12x30	6	YL254Y	
17	B254Y.41.114	密封圈FB35x55x9	Sealing ring fb35x55x9	1	YL254Y	
18	B160.37.159-1	动力输出轴护罩	Power take-off shield	1	YL254Y	
19	B254Y.41.107	防护罩安装板	Shield mounting plate	1	YL254Y	
20	D05-93-08	垫圈 8	Washer 8	2	YL254Y	

动力输出总成

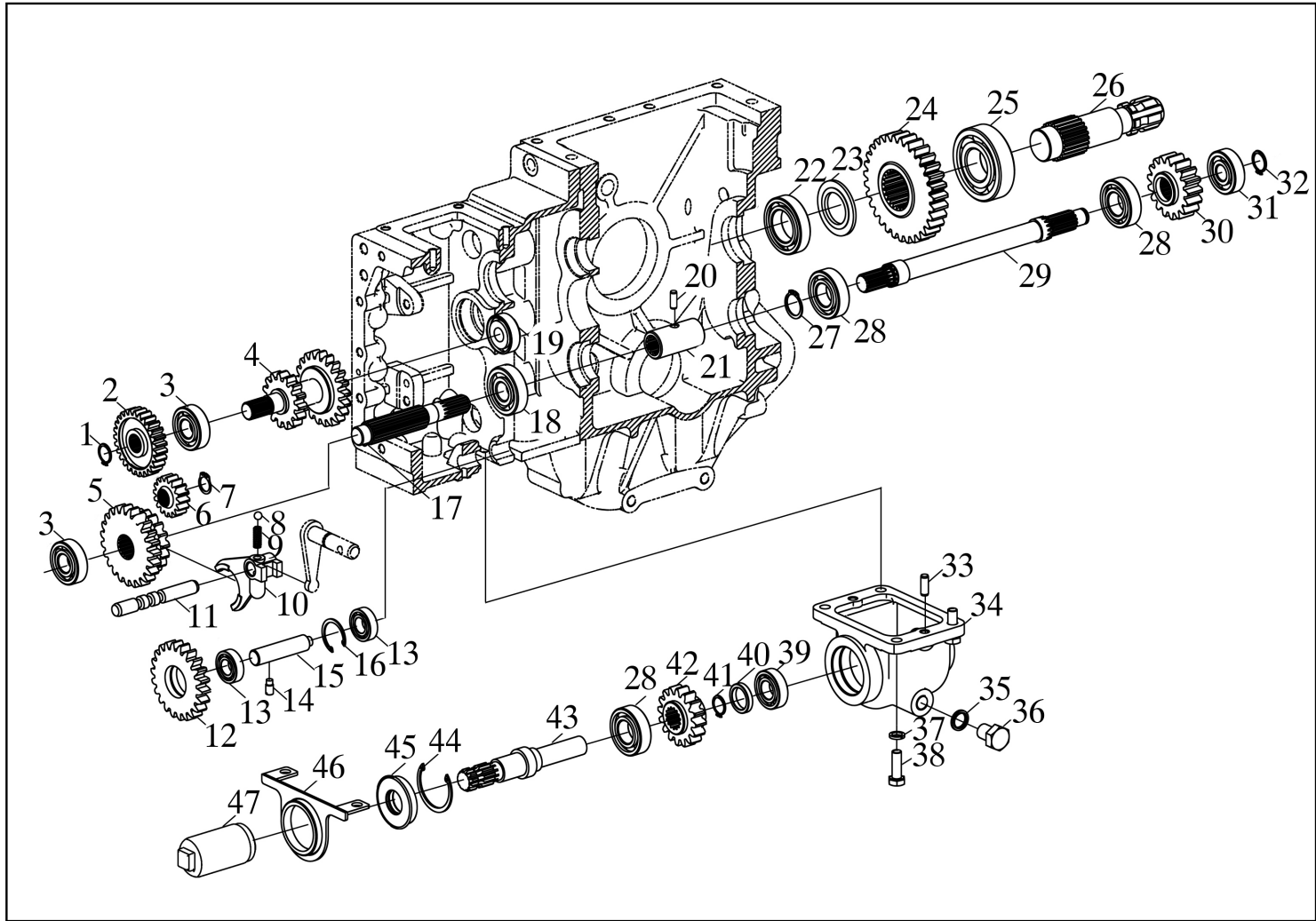
PT41-020 Power Take-off Assembly



通用性
GENERALITY

YL254Y

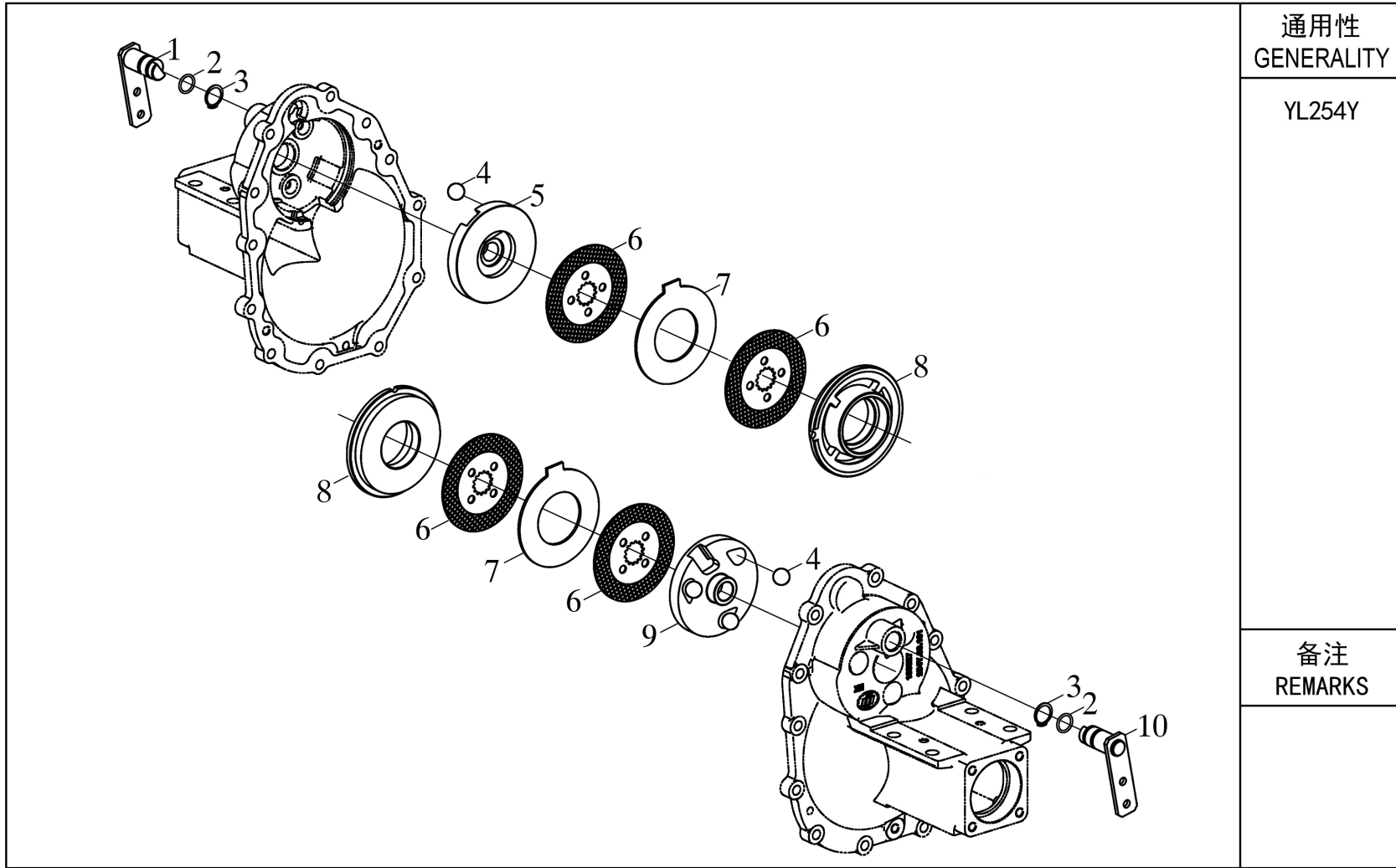
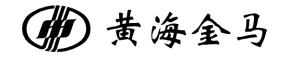
备注
REMARKS



序号 NO.	物料代码 ERP No.	零件名称	PART NAME	数量 Q'TY	通用性 GENERALITY	备注 REMARKS
1	D10-894.1-19	挡圈 19	Retaining ring 19	1	YL254Y	
2	B254Y.41A.102	动力输出被动齿轮	Power take-off driven gear	1	YL254Y	
3	D06-276-6204	深沟球轴承6204	Deep groove ball bearing 6204	2	YL254Y	
4	B254Y.41A.103	动力输出高低档主动齿轮	Power take-off high and low gear driving gear	1	YL254Y	
5	B254Y.41A.104	滑动齿轮	Sliding gear	1	YL254Y	
6	B254Y.41A.101	动力输出主动齿轮	Power take-off driving gear	1	YL254Y	
7	D10-894.1-18	挡圈 18	Retaining ring 18	1	YL254Y	
8	D13-308-8	钢球 8	Steel ball 8	1	YL254Y	
9	B254Y.37.163	定位弹簧	Positioning spring	1	YL254Y	
10	B254Y.41A.109	动力输出拨叉轴	Power take-off fork shaft	1	YL254Y	
11	B254Y.41A.115	动力输出拨叉	Power take-off fork	1	YL254Y	
12	B254Y.41A.106	中间齿轮	idler gear	1	YL254Y	
13	D06-276-6003	深沟球轴承6003	Deep groove ball bearing 6003	2	YL254Y	
14	D02-75-8X16	紧定螺钉M8X16	Set screw m8x16	1	YL254Y	
15	B254Y.41A.107	中间齿轮轴	Intermediate gear shaft	1	YL254Y	
16	D10-893.1-35	挡圈 35	Retaining ring 35	1	YL254Y	
17	B254Y.41A.105	动力输出传动轴I	Power take-off drive shaft I	1	YL254Y	
18	D06-276-6304	深沟球轴承6304	Deep groove ball bearing 6304	1	YL254Y	
19	D06-276-6302	深沟球轴承6302	Deep groove ball bearing 6302	1	YL254Y	
20	D09-879.1-8X30	圆柱销 8x30	Cylindrical pin 8x30	1	YL254Y	

序号 NO.	物料代码 ERP No.	零件名称	PART NAME	数量 Q'TY	通用性 GENERALITY	备注 REMARKS
21	B254Y.29.116	接合套	Joint sleeve	1	YL254Y	
22	D06-276-6007	轴承 6007	Bearing 6007	1	YL254Y	
23	B254Y.41.115	挡圈	Retaining ring	1	YL254Y	
24	B254Y.41.112	后置动力输出从动齿轮	Rear power take-off driven gear	1	YL254Y	
25	D06-276-6307	轴承 6307	Bearing 6307	1	YL254Y	
26	B254Y.41.117	后置动力输出轴	Rear power take-off shaft	1	YL254Y	
27	D10-894.1-25	挡圈 25	Retaining ring 25	1	YL254Y	
28	D06-276-6205	轴承 6205	Bearing 6205	3	YL254Y	
29	B254Y.41A.110	动力输出传动轴II	Power take-off drive shaft II	1	YL254Y	
30	B254Y.41.118	后置动力输出主动齿轮	Rear power take-off driving gear	1	YL254Y	
31	D06-276-6303	轴承 6303	Bearing 6303	1	YL254Y	
32	D10-894.1-17	挡圈 17	Retaining ring 17	1	YL254Y	
33	D09-119.1-10X20	圆柱销 10x20	Cylindrical pin 10x20	2	YL254Y	
34	B254Y.41.126	中置动力输出壳体	Center power take-off housing	1	YL254Y	
35	D17-982-16	组合密封垫圈 16	Combination sealing washer 16	1	YL254Y	
36	B300.50.118-1	放油螺塞 M16X1.5	Drain plug m16x1.5	1	YL254Y	
37	D05-93-10	垫圈 10	Washer 10	4	YL254Y	
38	D01-5783-10X30	螺栓 M10X30	Bolt m10x30	4	YL254Y	
39	D06-276-6004	轴承 6004	Bearing 6004	1	YL254Y	
40	B254Y.41A.119	隔套	Spacer sleeve	1	YL254Y	

制动器总成
BR43-010 Brake Assembly



通用性
GENERALITY

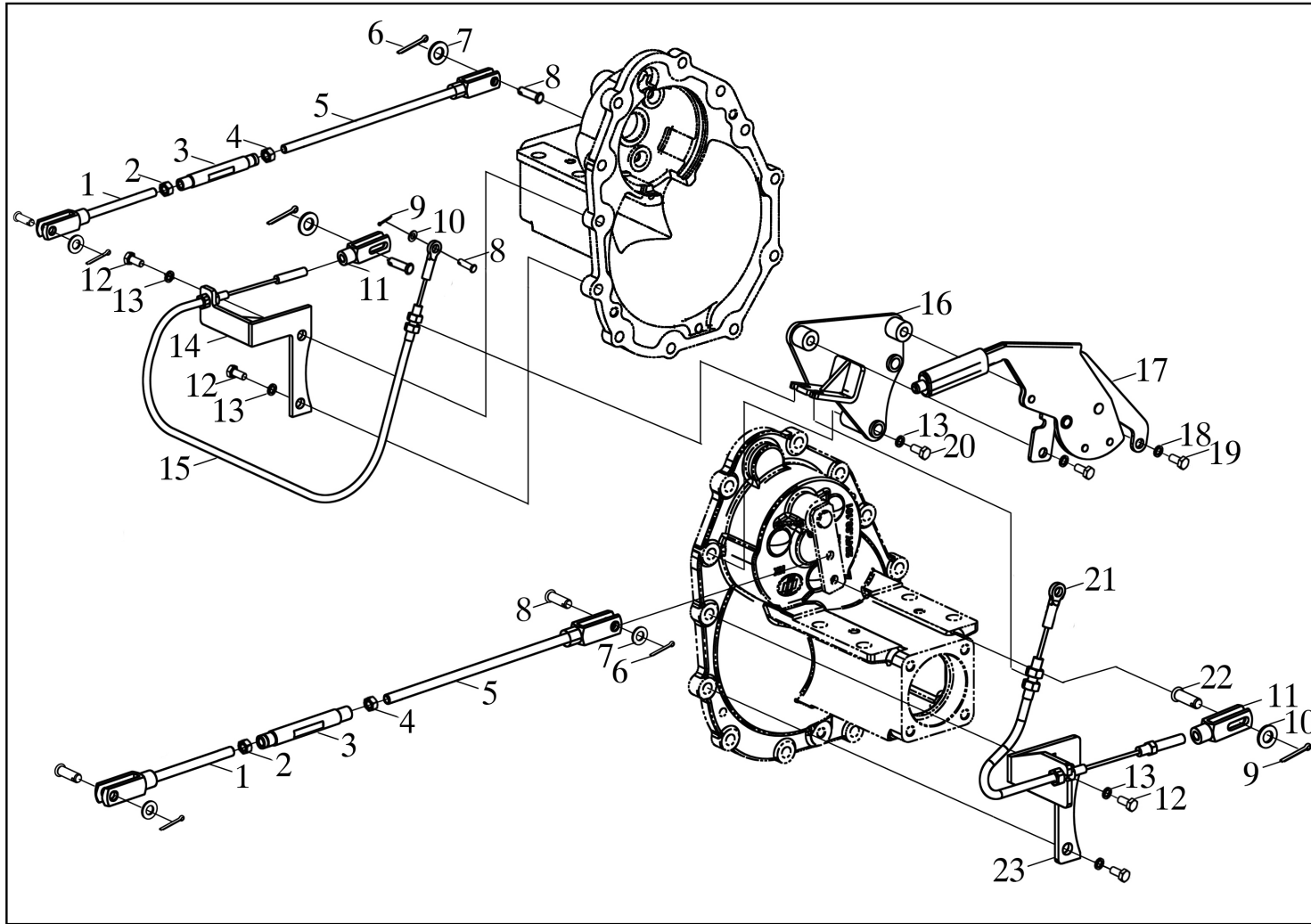
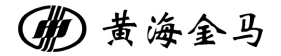
YL254Y

备注
REMARKS

序号 NO.	物料代码 ERP No.	零件名称	PART NAME	数量 Q'TY	通用性 GENERALITY	备注 REMARKS
1	B254Y.43.018	制动摇臂焊合件（右）	Brake rocker arm weldment (right)	1	YL254Y	
2	D07-3452.1-20X2.65G	O形密封圈20x2.65G	O-ring 20x2.65g	2	YL254Y	
3	D10-894.1-25	轴用弹性挡圈 25	Elastic ring for shaft 25	2	YL254Y	
4	D13-308-20	钢球 20	Steel ball 20	6	YL254Y	
5	B254Y.43.105	压盘（右）	Pressure plate (right)	1	YL254Y	
6	B254Y.43.016	摩擦片总成	Friction plate assembly	4	YL254Y	
7	B254Y.43.103	制动片	Brake pad	2	YL254Y	
8	B254Y.43.102	制动盘	Brake disc	2	YL254Y	
9	B254Y.43.104	压盘（左）	Pressure plate (left)	1	YL254Y	
10	B254Y.43.017	制动摇臂焊合件（左）	Brake rocker arm weldment (left)	1	YL254Y	

制动操纵机构

BR43-020 Brake Operation Assembly



通用性
GENERALITY

YL254Y

备注
REMARKS

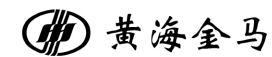
序号 NO.	物料代码 ERP No.	零件名称	PART NAME	数量 Q'TY	通用性 GENERALITY	备注 REMARKS
1	B254Y.43A.021	前拉杆焊合件	Front link weldment	2	YL254Y	
2	D03-6171-10X1	六角头螺母 M10X1	Hexagon nut M10x1	2	YL254Y	
3	B254Y.43.107	调节套	Adjusting sleeve	2	YL254Y	
4	D03-6171-10X1(左)	六角头螺母 M10X1(左)	Hexagon nut M10x1 (left)	2	YL254Y	
5	B254Y.43.022	后拉杆焊合件	Rear tie rod weldment	2	YL254Y	
6	D09-91-3.2X26	开口销 3.2X26	Split pin 3.2x26	4	YL254Y	
7	D05-97.1-10	平垫圈 10	Flat washer 10	4	YL254Y	
8	D09-882-10X30	销轴 10X30	Pin shaft 10x30	5	YL254Y	
9	D09-91-2X16	开口销 2X16	Split pin 2x16	6	YL254Y	
10	D05-97.1-8	平垫圈 8	Flat washer 8	6	YL254Y	
11	B254Y.43.108	连接叉	Connecting fork	2	YL254Y	
12	D01-5783-12X45	螺栓 M12X45	Bolt m12x45	4	YL254Y	
13	D05-93-12	垫圈 12	Washer 12	6	YL254Y	
14	B254Y.43A.036	右拉线支架焊合件	Right stay bracket weldment	1	YL254Y	
15	B254Y.43A.034	右制动拉线	Right brake cable	1	YL254Y	
16	B254Y.43A.013	手制动固定板焊合件	Hand brake fixed plate weldment	1	YL254Y	
17	N9431030BAB	驻车制动操纵总成	Parking brake control assembly	1	YL254Y	
18	D05-93-10	垫圈 10	Washer 10	2	YL254Y	
19	D01-5783-10X30	螺栓 M10X30	Bolt m10x30	2	YL254Y	
20	D01-5782-12X95	螺栓 M12X95	Bolt m12x95	2	YL254Y	

序号 NO.	物料代码 ERP No.	零件名称	PART NAME	数量 Q'TY	通用性 GENERALITY	备注 REMARKS
1	D01-5783-6X25	螺栓 M6x25	Bolt M6x25	18	YL254Y	
2	D05-93-06	垫圈 6	Washer 6	18	YL254Y	
3	B254Y.47.196A	右操纵导板	Right Operating Guide	1	YL254Y	
4	B254Y.47.019A	右挡泥板焊合件	Right fender welded joint	1	YL254Y	
5	B254Y.47.186A	左操纵导板	Left Operating Guide	1	YL254Y	
6	B254Y.47.018A	左挡泥板焊合件	Left fender welded joint	1	YL254Y	
7	B254Y.47.028A	机罩合件	Cover fitting	1	YL254Y	
8	D25-YQ10-175- 500(200)	600N气弹簧	600N Gas Spring	1	YL254Y	
9	B254Y.47.029	机罩锁扣焊合件	Lock welding fitting for hood	1	YL254Y	
10	D01-16674-8X35	法兰螺栓 M8x35	Flange Bolt M8x35	2	YL254Y	
11	D01-5789-8X25	法兰螺栓 M8x25	Flange Bolt M8x25	2	YL254Y	
12	BYS454.30.016	机罩锁支架焊合件	Welding fitting for hood lock bracket	1	YL254Y	
13	B2004.47.144	机罩锁总成	Hood Lock Assembly	1	YL254Y	
14	D03-6170-8	螺母 M8	Nut M8	2	YL254Y	
15	BYS454.30.106	机罩锁拉钩	Hood retractor	1	YL254Y	
16	D05-97.1-6	平垫圈 6	Flat washer 6	1	YL254Y	
17	D09-91-2X16	开口销 2X16	Split pin 2x16	1	YL254Y	

序号 NO.	物料代码 ERP No.	零件名称	PART NAME	数量 Q'TY	通用性 GENERALITY	备注 REMARKS
1	C804-003B	倒车镜总成	Reversing mirror assembly	2	YL254Y	
2	B254Y.47.015A	后视镜支架焊合件	Rear view mirror bracket weldment	2	YL254Y	
3	D05-93-08	垫圈 8	Washer 8	4	YL254Y	
4	D05-97.1-08	垫圈 8	Washer 8	4	YL254Y	
5	D01-5783-8X25	螺栓 M8X50	Bolt M8X50	4	YL254Y	
6	B254Y.47.014A	前支架焊合件	Front Bracket Weld	1	YL254Y	
7	D01-5783-8X25	螺栓 M8X25	Bolt M8X25	4	YL254Y	
8	D05-93-08	垫圈 8	Washer 8	4	YL254Y	
9	D05-97.1-08	垫圈 8	Washer 8	4	YL254Y	
10	D03-6170-08	螺母M8	Nut M8	4	YL254Y	
11	BYL254D.47.027	铰链板焊合件	Hinge Plate Weld	1	YL254Y	
12	D01-5783-10X25	螺栓 M10X25	Bolt M10X25	4	YL254Y	
13	D05-93-10	垫圈 10	Washer 10	4	YL254Y	
14	D05-96-10	加大垫圈 10	Enlarged washer 10	4	YL254Y	

序号 NO.	物料代码 ERP No.	零件名称	PART NAME	数量 Q'TY	通用性 GENERALITY	备注 REMARKS
21	GB3541-1983	垫圈 16	Washer 16	1	YL254Y	
22	B254Y.37.163	定位弹簧	Locating spring	1	YL254Y	
23	D13-308-8	钢球 8	Ball 8	1	YL254Y	
24	B254Y.55.020	手轮胶合件	Handwheel glue	1	YL254Y	
25	D09-879.4-5X24	圆柱销 5X24	Cylindrical pin 5X24	1	YL254Y	
26	B254Y.55.107	控制阀	control valve	1	YL254Y	
27	B254Y.55.118	孔用挡圈	Retaining ring for bore	1	YL254Y	
28	D10-896-9	开口挡圈 9	Open retainer ring 9	1	YL254Y	
29	D07-3452.1-10X1.8	O形圈 10x1.8	O-ring 10x1.8	1	YL254Y	
30	D13-308-7	钢球 7	Ball 7	1	YL254Y	
31	B254Y.55.108	节流阀压簧	Throttle valve pressure spring	1	YL254Y	
32	B254Y.55.109	阀座	valve seat	1	YL254Y	
33	D01-5786-12X1.25X16	细牙螺栓 M12X1.25X16	Fine-tooth bolt M12X1.25X16	1	YL254Y	
34	GB3541-1983	垫圈 12	Washer 12	1	YL254Y	
35	D01-5786-10X1X12	螺栓 M10X1X12	Bolt M10X1X12	1	YL254Y	
36	GB3541-1983	垫圈 10	Washer 10	1	YL254Y	
37	B254Y.55.101	提升器壳体	Hoist housing	1	YL254Y	
38	D01-5783-12X35	螺栓 M12X35	Bolt M12X35	12	YL254Y	
39	D05-93-12	垫圈 12	Washer 12	12	YL254Y	
40	D01-5783-8X20	螺栓 M8X20	Bolt M8X20	2	YL254Y	

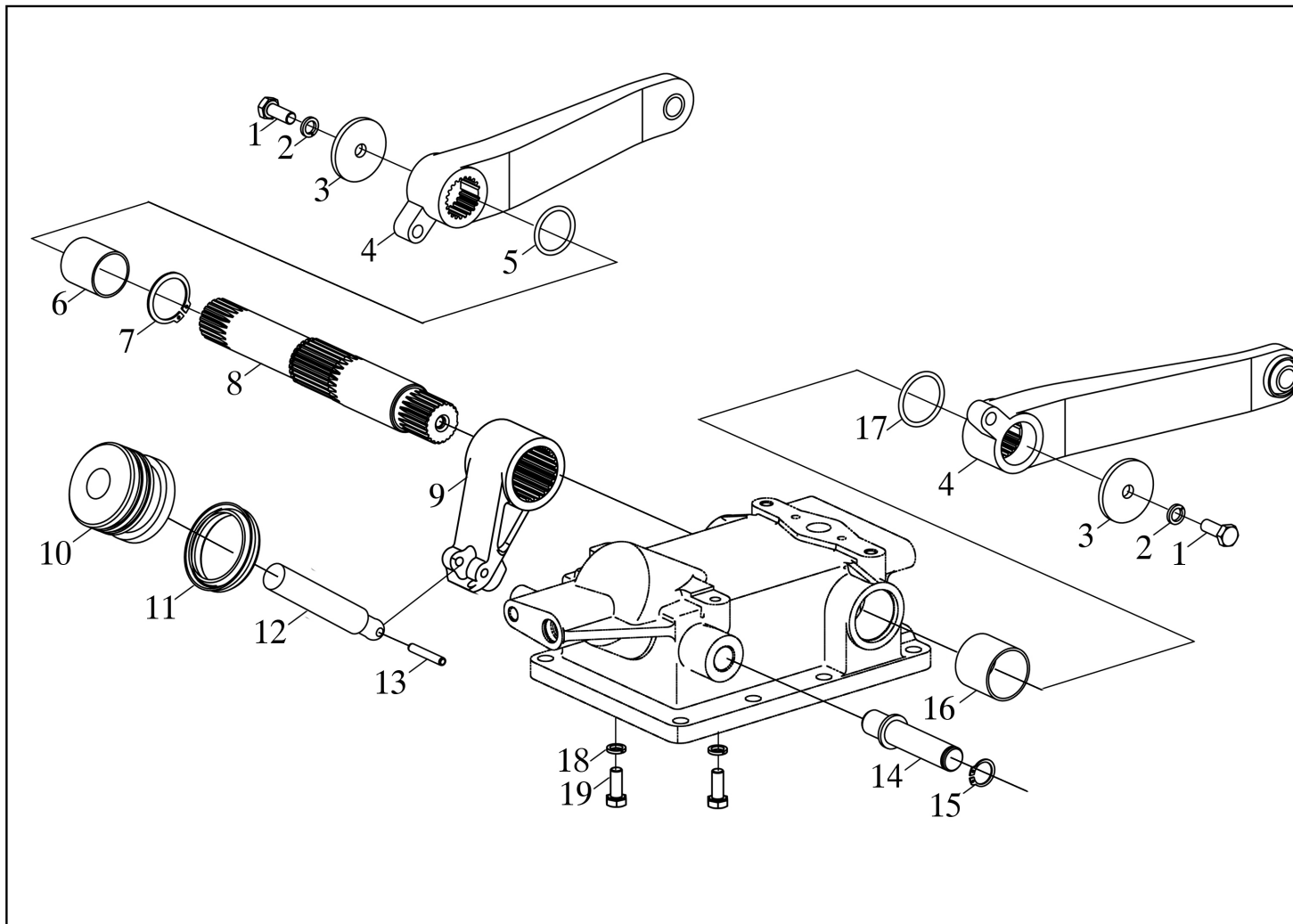
液压提升器总成
HY55-020 Hydraulic Lifter Assembly



通用性
GENERALITY

YL254Y

备注
REMARKS

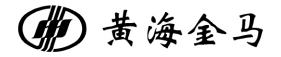


序号 NO.	物料代码 ERP No.	零件名称	PART NAME	数量 Q'TY	通用性 GENERALITY	备注 REMARKS
1	D01-5783-10x25	螺栓 M10X25	Bolt M10X25	2	YL254Y	
2	D05-93-10	垫圈 10	Washer 10	2	YL254Y	
3	B254Y.55.121	压板	Press plate	2	YL254Y	
4	B254Y.55.026	提升臂合件	Lifting arm joint	2	YL254Y	
5	D07-3452.1- 00-5X3.55	O形圈 33.5x3.55	O-ring 33.5x3.55	1	YL254Y	
6	B254Y.55.113	衬套	bushing	1	YL254Y	
7	D10-894.1-38	轴用挡圈 38	Shaft retaining ring 38	1	YL254Y	
8	B254Y.55.114	提升轴	Lifting shaft	1	YL254Y	
9	B254Y.55.105	内提升臂	Inner lifting arm	1	YL254Y	
10	B254Y.55.102	活塞	piston	1	YL254Y	
11	B254Y.55.103	YX形密封圈D70	YX-ring D70	1	YL254Y	
12	B254Y.55.104	活塞顶杆	Piston crown rod	1	YL254Y	
13	D09-879.4-5X24	圆柱销5x24	Cylindrical pin 5x24	1	YL254Y	
14	B254Y.55.116	操纵轴	Operating shaft	1	YL254Y	
15	D10-894.1-20	轴用挡圈 20	Shaft retainer ring 20	1	YL254Y	
16	B254Y.55.115	衬套	bushing	1	YL254Y	
17	D07-3452.1- 00-7X3.55	O形圈 38.7x3.55	O-ring 38.7x3.55	1	YL254Y	
18	D01-5783-8X20	螺栓 M8X20	Bolt M8X20	2	YL254Y	
19	D05-93-8	垫圈 8	Washer 8	2	YL254Y	

序号 NO.	物料代码 ERP No.	零件名称	PART NAME	数量 Q'TY	通用性 GENERALITY	备注 REMARKS
1	B254Y.58.107	手柄	Handle	2	YL254Y	
2	B254Y.58.015	操纵杆焊合件（一）	Operating lever welded joint (I)	1	YL254Y	
3	B254Y.58.016	操纵杆焊合件（二）	Operating lever welded joint (II)	1	YL254Y	
4	D09-91-3.2X20	开口销3. 2X20	Cotter pin 3.2X20	1	YL254Y	
5	D05-97.1-12	垫圈 12	Washer 12	1	YL254Y	
6	B254Y.58.017	拉杆焊合件（一）	Tie rod welded joint (I)	1	YL254Y	
7	D05-97.1-12	垫圈 8	Washer 8	2	YL254Y	
8	D09-91-3.2X20	开口销2x16	Cotter pin 2x16	2	YL254Y	
9	B254Y.58.018	拉杆焊合件（二）	Tie rod welded joint (II)	1	YL254Y	
10	B254Y.58.029	万向球头	Universal ball head	2	YL254Y	
11	D01-5783-10X20	螺栓 M10X20	Bolt M10X20	2	YL254Y	
12	D03-93-10	垫圈 10	Washer 10	2	YL254Y	
13	D17-19674.2-G3/8SA	填料密封G3/8SA	Packing seal G3/8SA	2	YL254Y	
14	B254Y.58A.019	多路阀进油管焊合件	Welding joint for multi-way valve inlet pipe	1	YL254Y	
15	B254Y.58.105	铰接螺栓 G3/8	Articulated bolt G3/8	1	YL254Y	
16	B254Y.58A.023	支撑架焊合件	Welded joint of support frame	1	YL254Y	

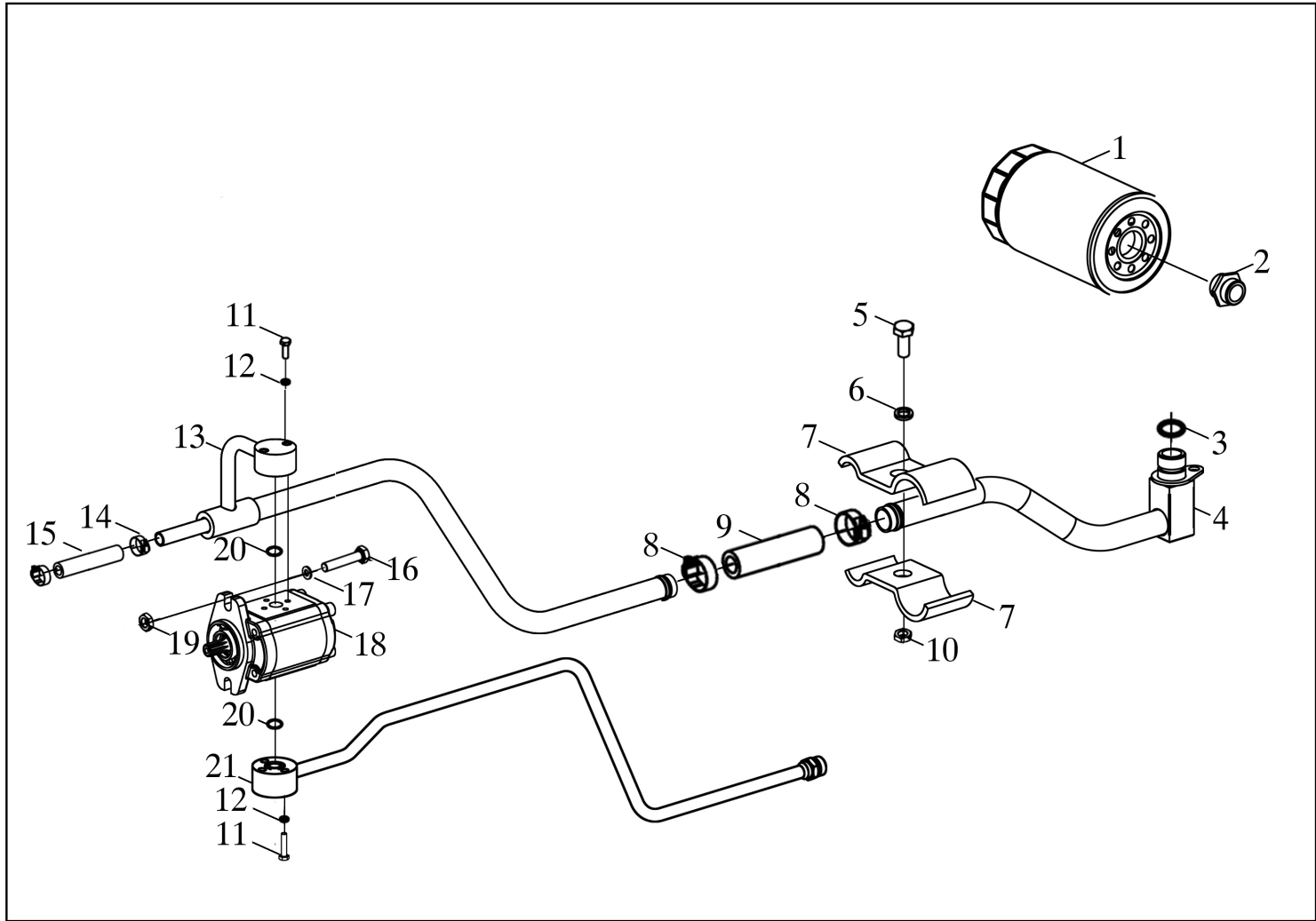
液压提升管路总成

HL58-030 Hydraulic Lifting Pipe Assembly



通用性
GENERALITY

YL254Y



备注
REMARKS

序号 NO.	物料代码 ERP No.	零件名称	PART NAME	数量 Q'TY	通用性 GENERALITY	备注 REMARKS
1	C906-004	旋转式管路过滤器总成	Rotary line filter assembly	1	YL254Y	
2	B254Y.58.101	滤清器接头	Filter adapter	1	YL254Y	
3	D07-3452.1-20X2.65	O形圈 20X2.65	O-ring 20x2.65	1	YL254Y	
4	B254Y.58.012	双联泵进油管后段焊合件	Weldment for rear section of oil inlet pipe of duplex pump	1	YL254Y	
5	D01-5783-8X20	螺栓 M8X20	Bolt m8x20	1	YL254Y	
6	D05-93-08	垫圈 8	Washer 8	1	YL254Y	
7	B254Y.58.108	油管固定卡12-22	Tubing retainer 12-22	2	YL254Y	
8	D16-8870-40	喉箍 D40	Hose clamp D40	2	YL254Y	
9	D32-10637-B22X170	胶管 B22X170	Hose b22x170	1	YL254Y	
10	D03-6170-8	螺母 M8	Nut M8	1	YL254Y	
11	D01-5782-6X35	螺栓 M6X35	Bolt m6x35	5	YL254Y	
12	D03-5-93-06	垫圈 6	Washer 6	5	YL254Y	
13	B254Y.58.013A	泵进油管前段焊合件	Front section weldment of pump inlet pipe	1	YL254Y	
14	D16-8870-25	喉箍 D25	Hose clamp D25	2	YL254Y	
15	D32-10637-B13X80	胶管B13X80	Hose b13x80	1	YL254Y	
16	D01-5782-10X110	螺栓 M10X110	Bolt m10x110	2	YL254Y	
17	D05-97.1-10	垫圈 10	Washer 10	2	YL254Y	
18	B254Y.58A.027A	齿轮泵8	Gear pump 8	1	YL254Y	
19	D03-6170-10	螺母 M10	Nut M10	2	YL254Y	
20	D07-3452.1-13.2X1.8	O形圈 13.2x1.8	O-ring 13.2x1.8	2	YL254Y	

