

One Golden Lane – How to Maximise Steel Reuse

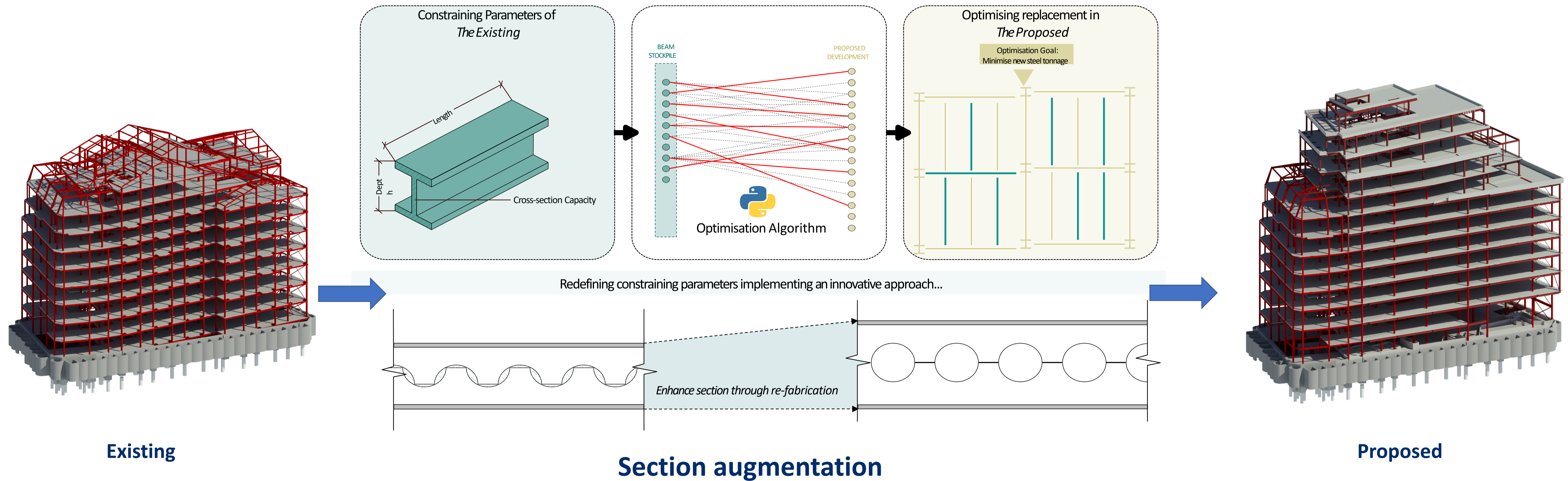


LONDON
STRUCTURES
LAB



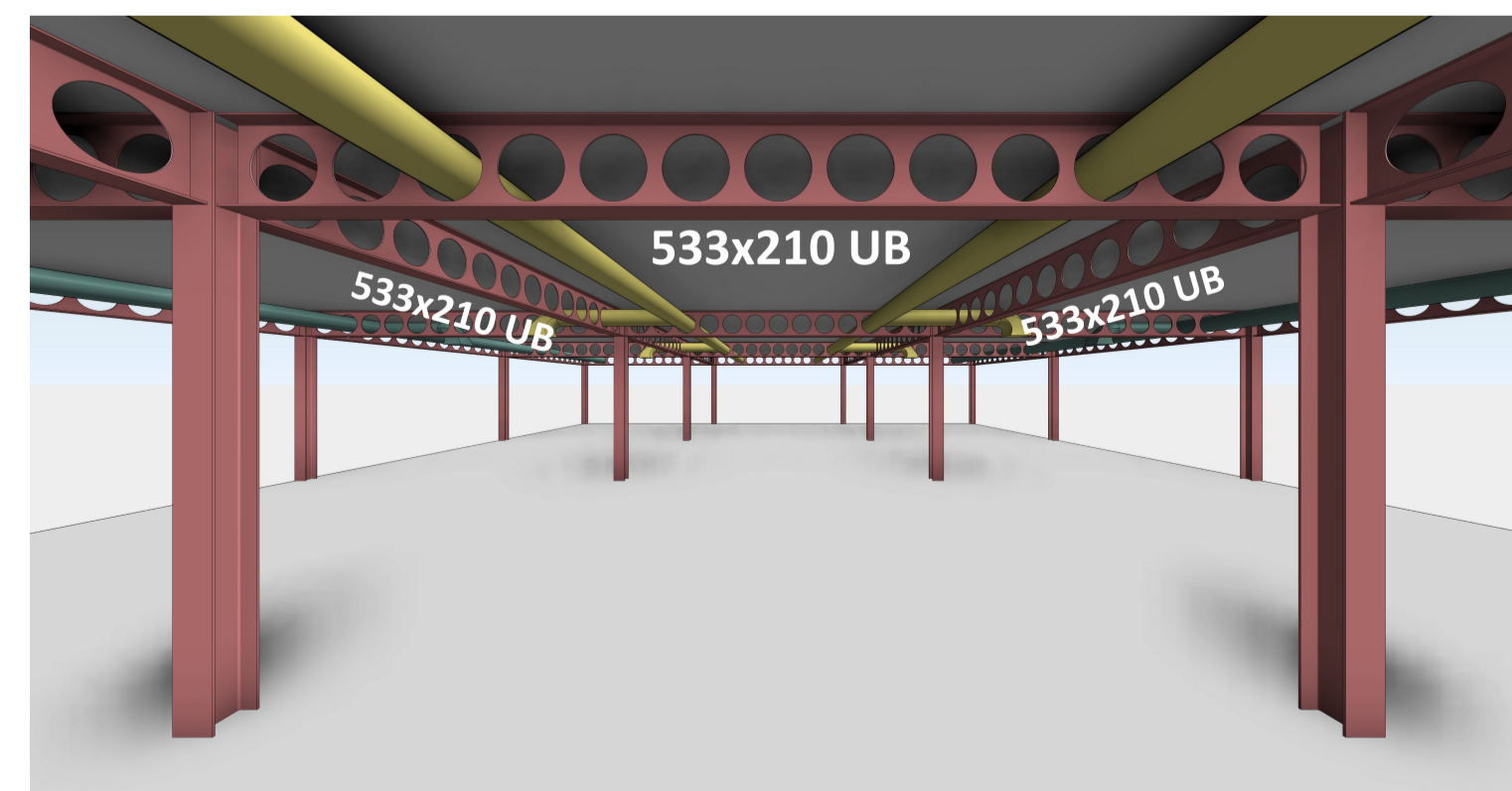
2023

How can we maximise the amount of steel reuse when the donor building is the recipient?

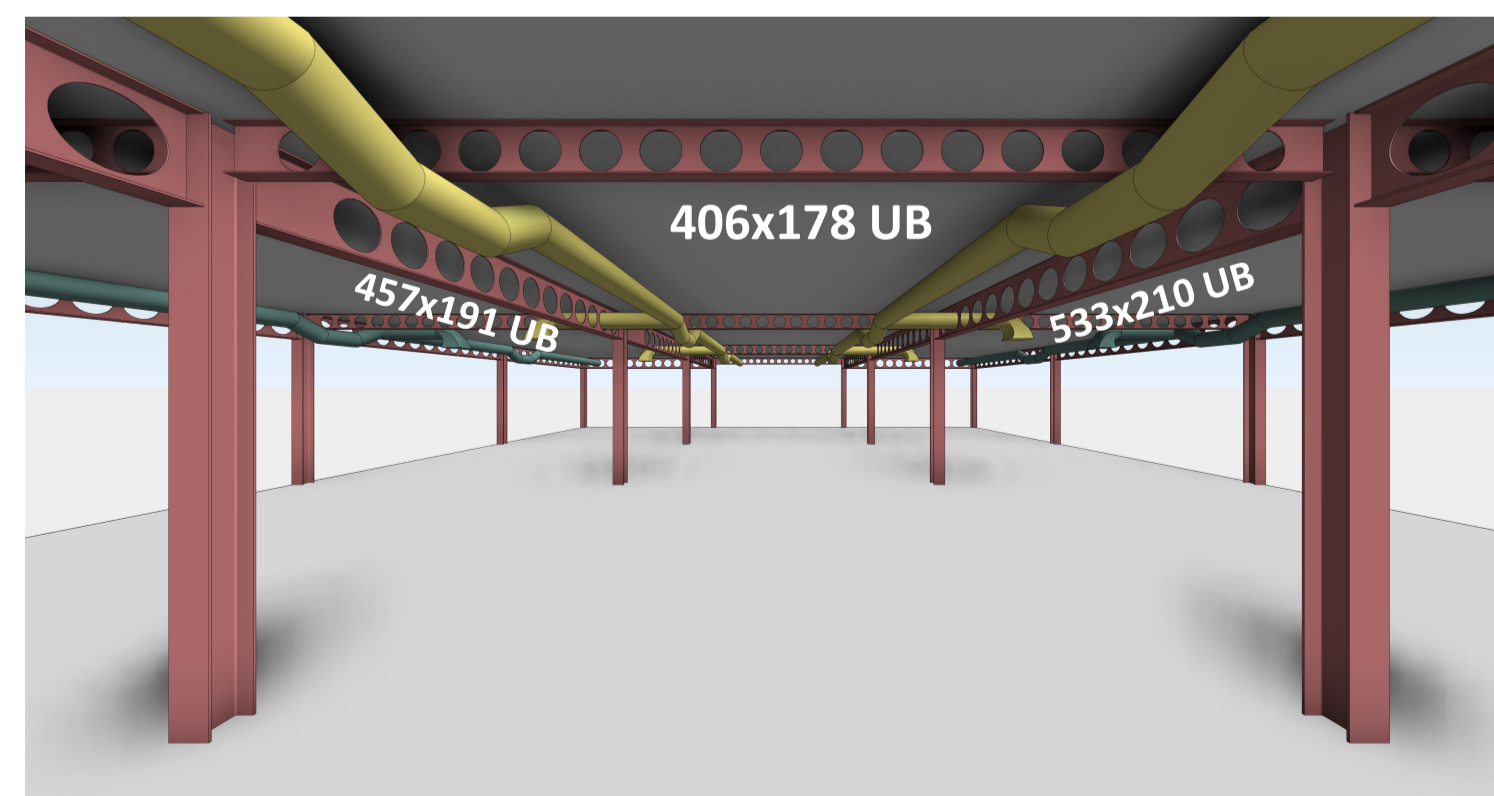


Allowed 40% additional steel to be reused

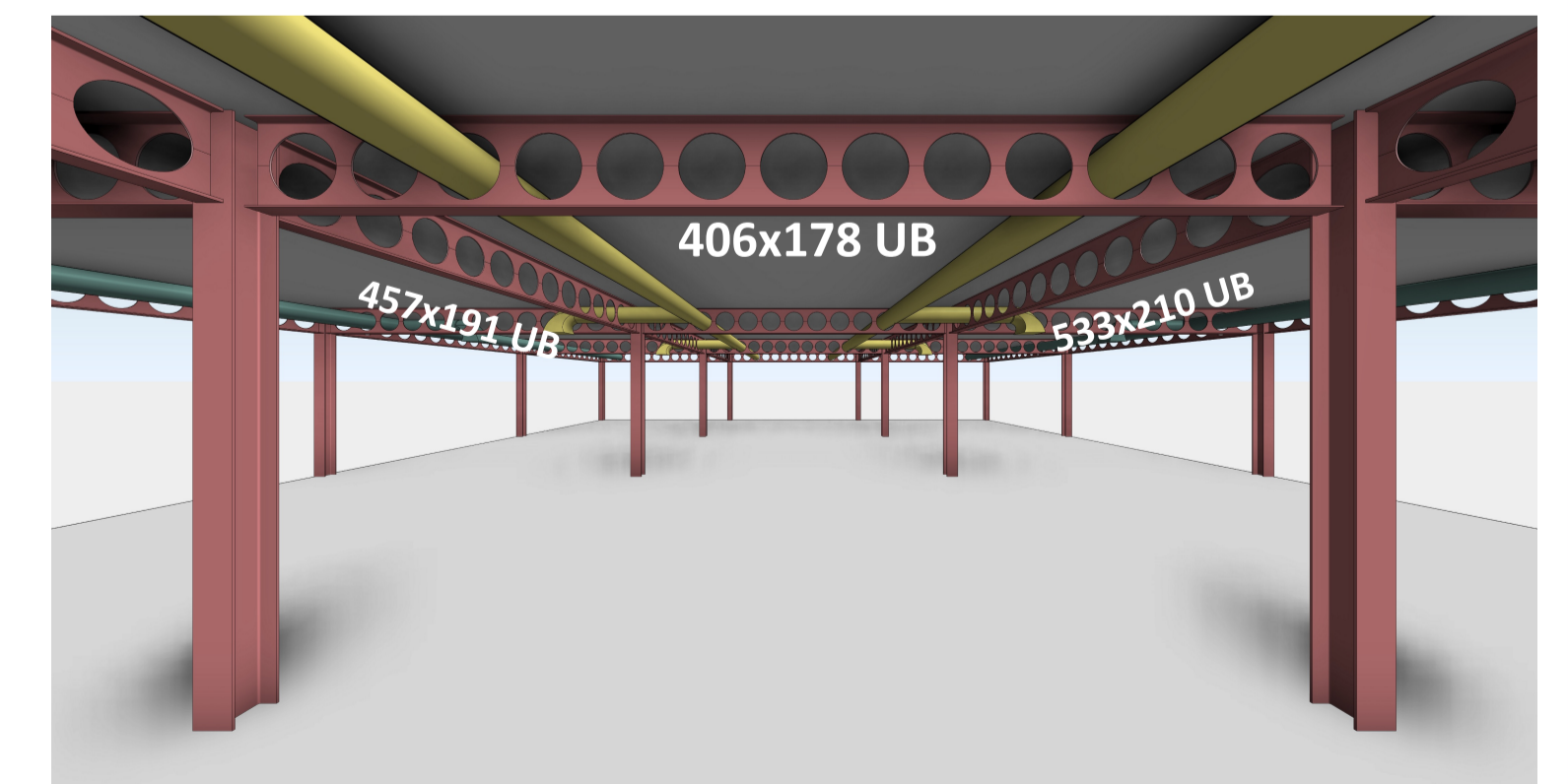
BREEAM® Innovation credit awarded January 2023



The present – business as usual



The challenge with reuse



The solution – consistent structure and services zone with reuse

One Golden Lane – How to dismantle and manage risk

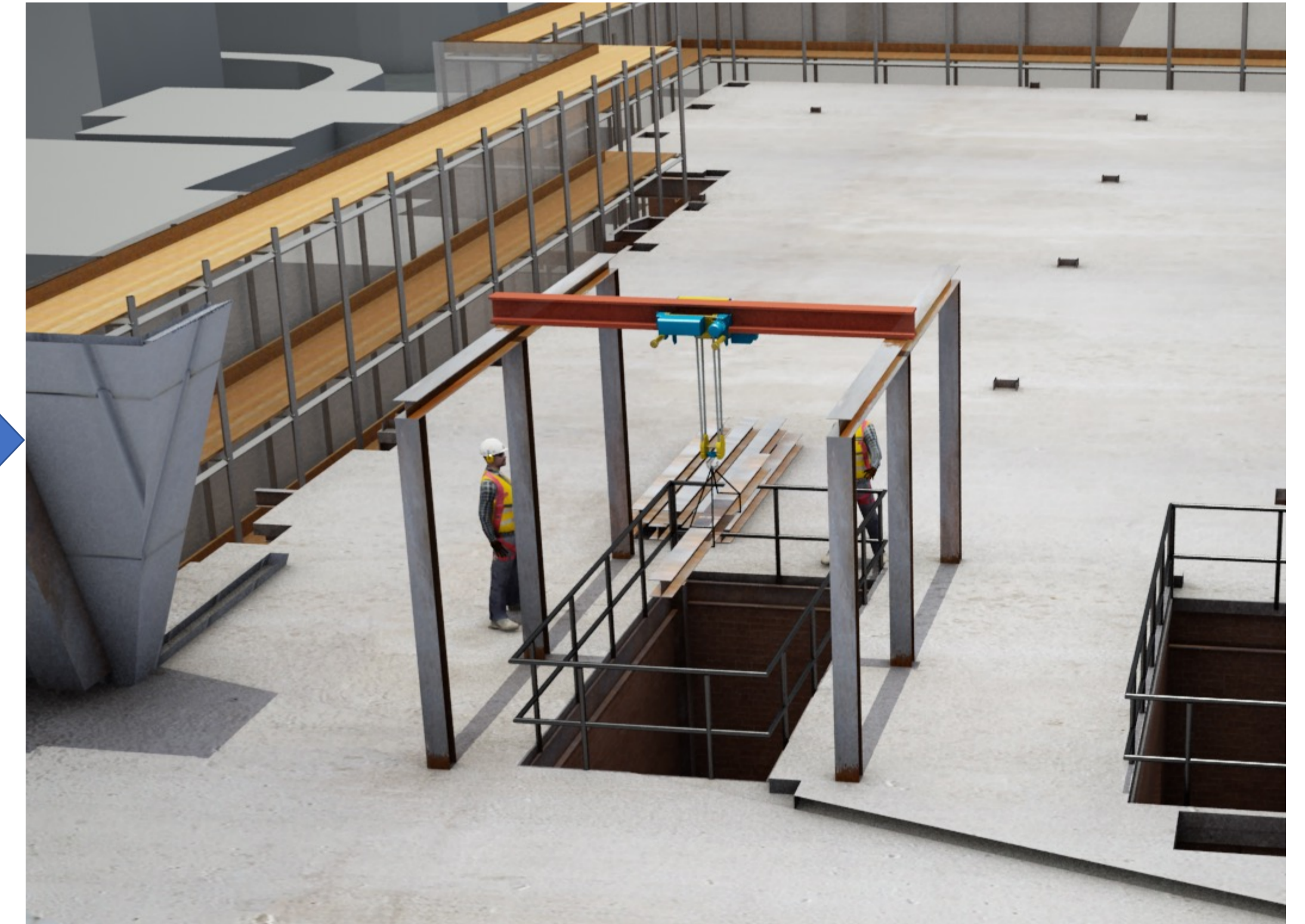
How are we dismantling?



Mobile Crane



Spider Crane + Oxy-Propane Cut



Electric Hoist

How to manage risk transfer?

