

# DISRUPT II project: Developing a Guidance for Recovering Steel for Reuse

**DISRUPT II** is a deep dive into the demolition sector, aiming to overcome barriers to the availability of reclaimed steel. It builds upon our previous DISRUPT I project on steel reuse.

The project achieves its goals by developing guidance for recovering steel from buildings through:

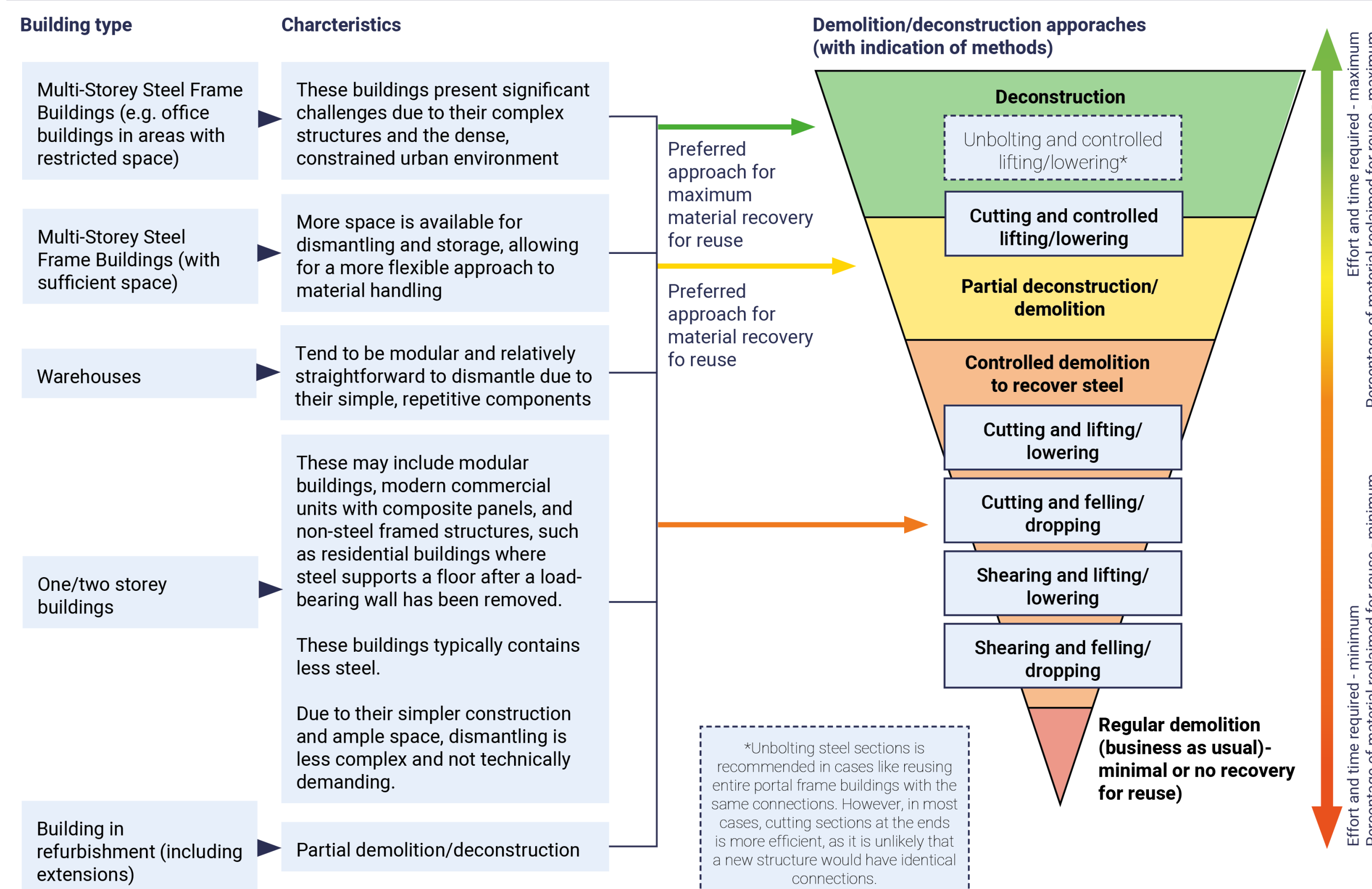
- Engaging closely with the demolition industry via their industry body, the Institute of Demolition Engineers (IDE).
- Conducting site visits and developing detailed case studies.
- Investigating procurement arrangements and exploring ways to improve them to encourage the recovery of more steel from buildings.
- Encouraging broader dialogue, particularly between designers and demolition contractors, through ASBP's ongoing Reuse Now Campaign. This involves in-person events, collating industry knowledge on reuse, and signposting best practices and case studies.

Learn more about our previous DISRUPT I project:

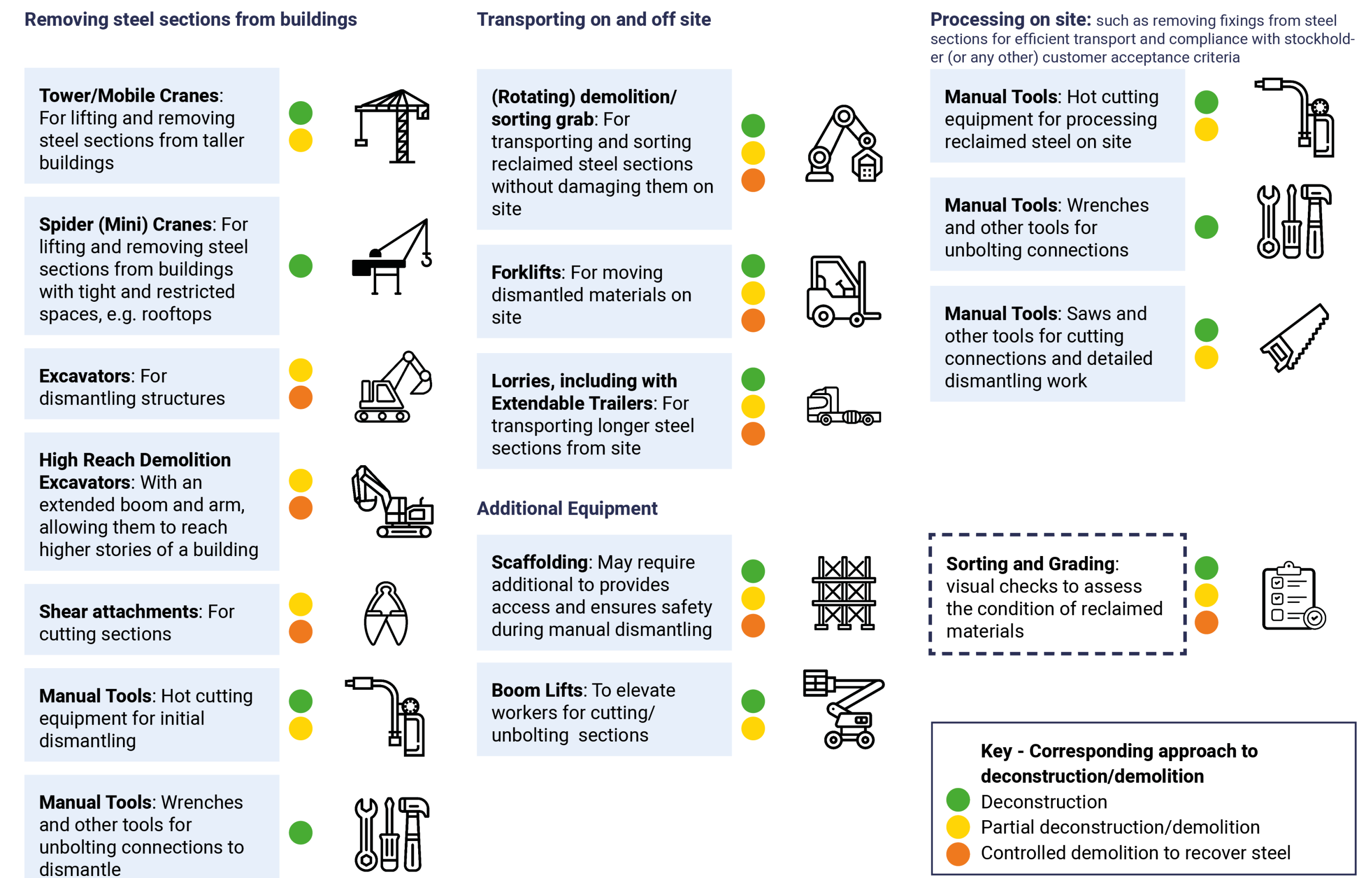


Diagrams 1 and 2 present some of the project's outputs.

## 1. Demolition/deconstruction approaches linked to building types



## 2. Extra equipment required for reuse vs business as usual



These are only some of our **project outputs**. **Want to know more?**

We will also be launching:

- ✓ A decision tree for determining whether steel is acceptable for reuse
- ✓ Guidance for conducting pre-demolition audits
- ✓ A photographic library showing different types of steels in situ and after recovery, and their suitability for reuse
- ✓ Detailed case studies detailing approaches for recovering steel for reuse
- ✓ Procurement recommendations
- ✓ A guidance note on WLCA
- ✓ and more

Register for our project closing event on 22 October in London:



Project team:



Project funder:



Further info:

Asselia Katenbayeva  
Lead Researcher  
asselia@asbp.org.uk

LinkedIn:

