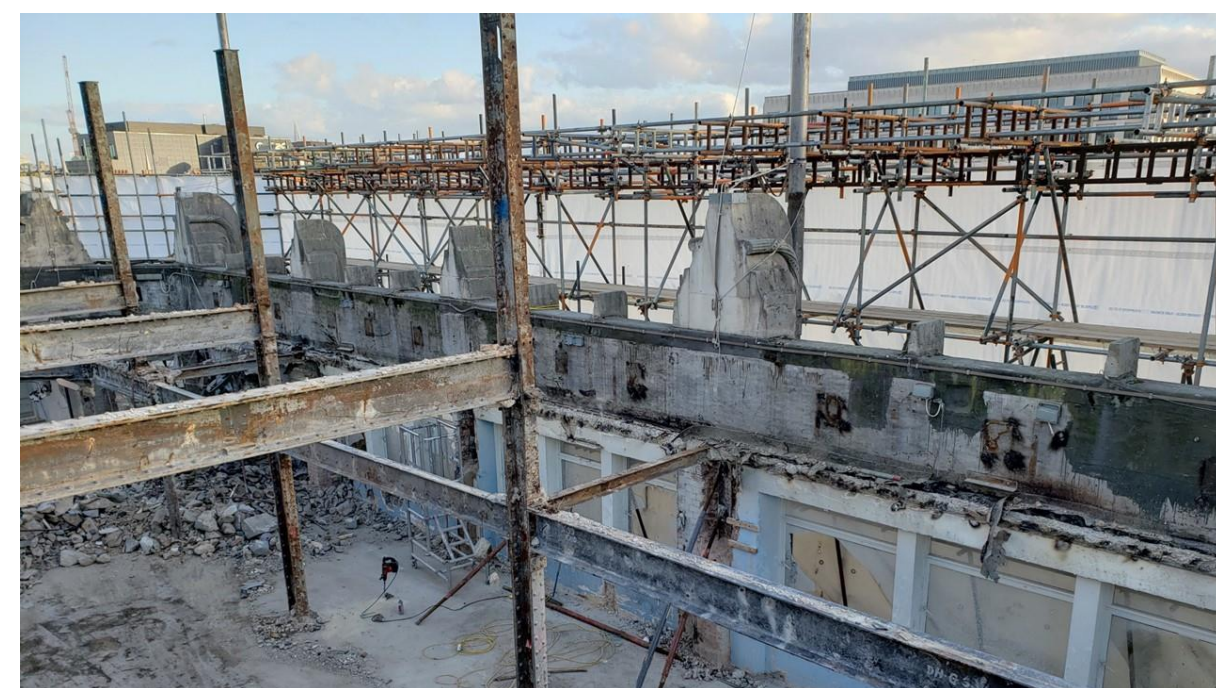


Urban Mining – The Elephant to FORE's TBC London



318 Oxford Street, "The Elephant" - Donor



TBC London - recipient



Reused Beam Locations

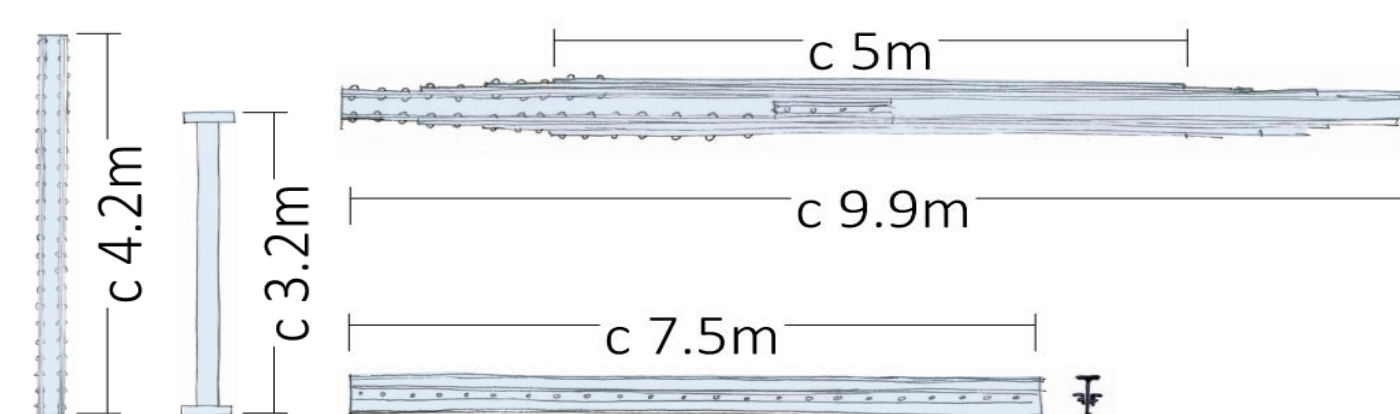
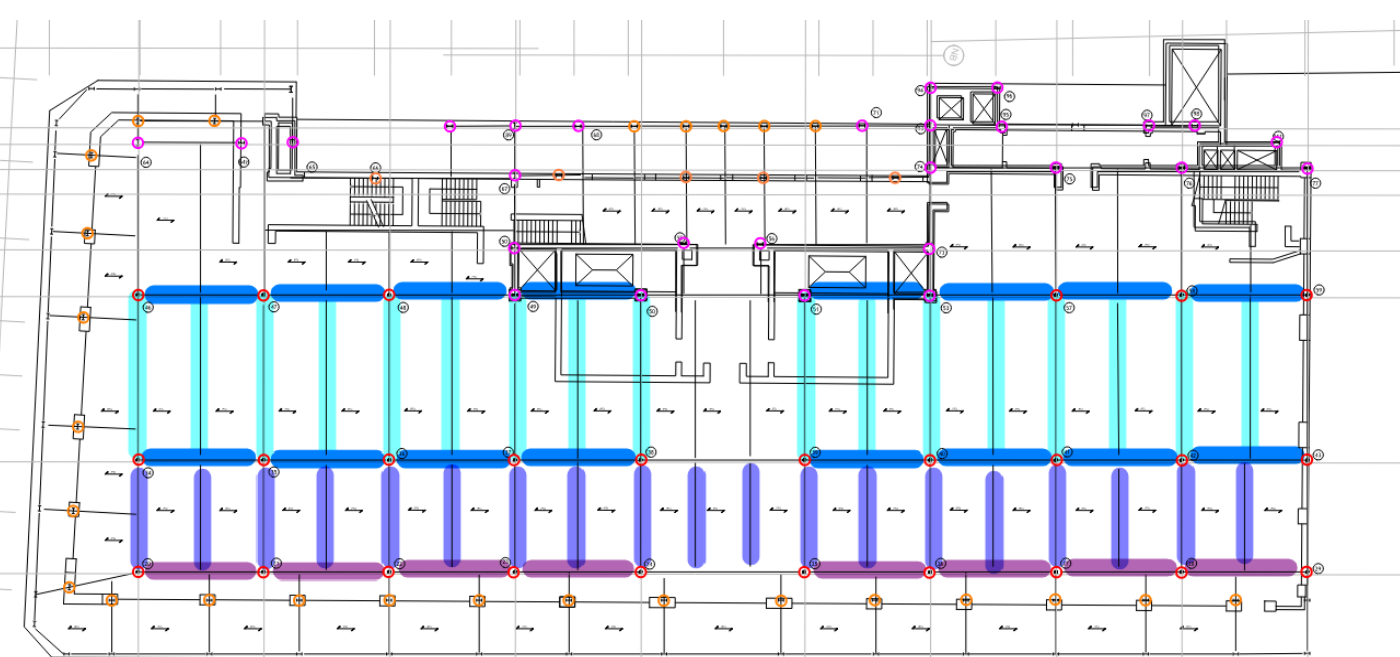
TBC reuse based on SCI P427/P440. One of the first uses of SCI guidance for pre-1930s steel.

- No Built-up members
- No spliced members
- No significant loss due to corrosion
- No signs of fire exposure

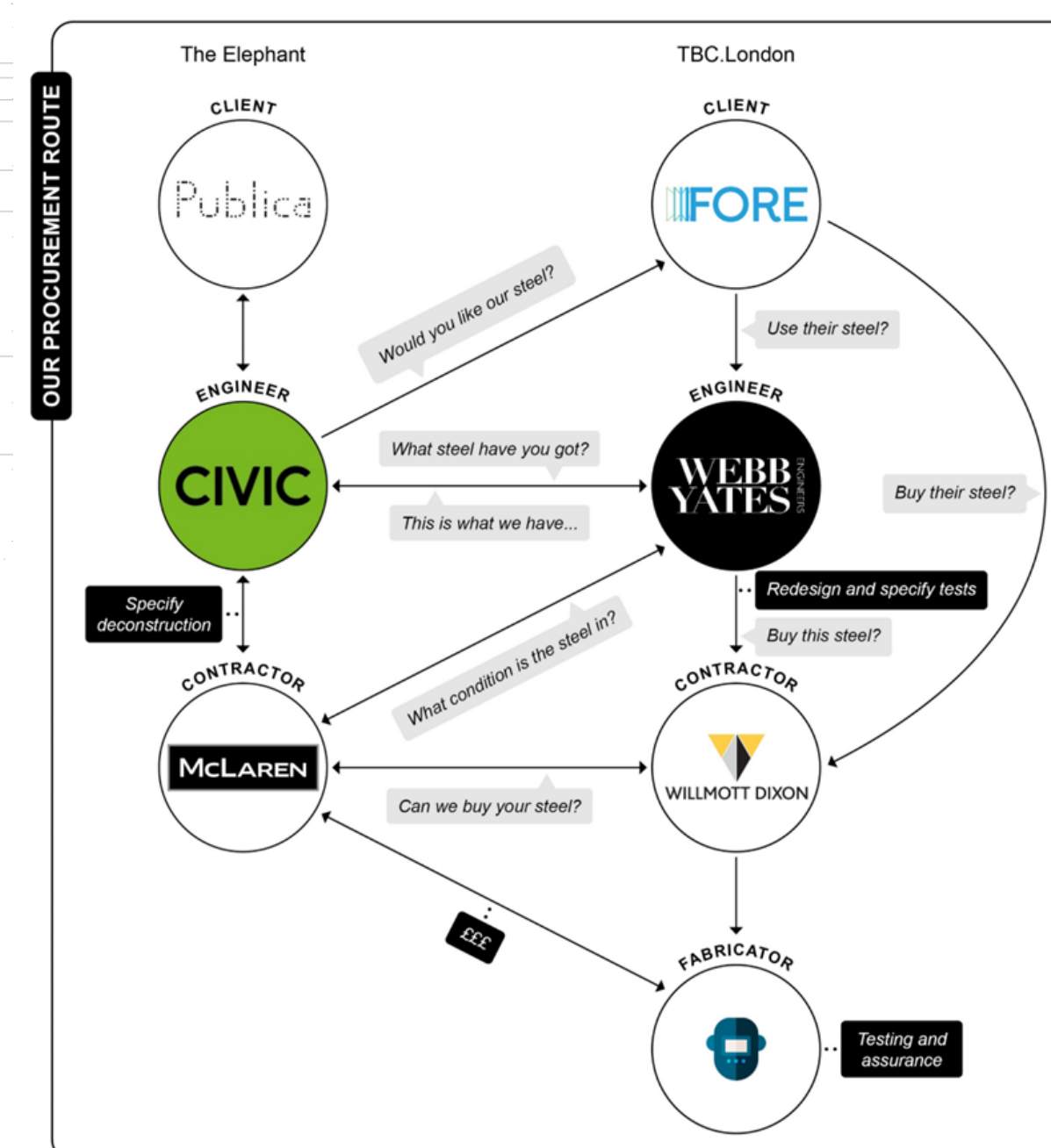
Steel tested in batches according to section sizes for the following:

- Yield Strength
- Ultimate Strength
- Elongation
- Impact Toughness
- Weldability

TBC London tested 6 members per group. (Minimum is 1 per group)



Steelwork Audit



Procurement

