

Steel Reuse at 180 Piccadilly

GPE. make

Elliott
Wood

mace

John F Hunt

emr REUSABLE
STEELS

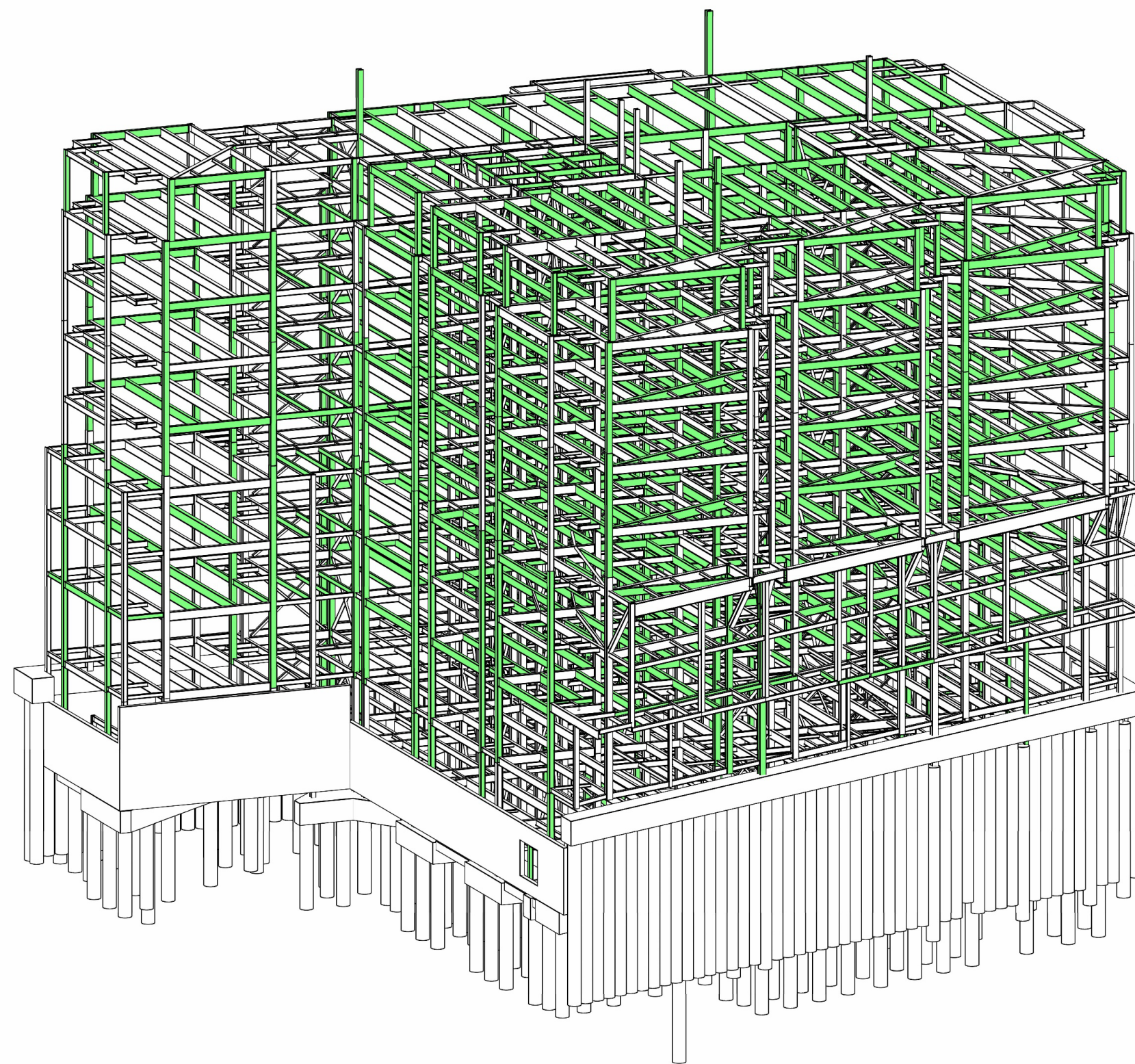
HOARE LEA (H.)



2024

As part of GPE's scheme to reclaim approximately 1,500 tonnes of 1990s steelwork for use across its portfolio, 180 Piccadilly is helping prove the process of reusing steelwork at scale. To our knowledge, it is the largest steel reuse project in the UK.

DONOR: CITY PLACE HOUSE



keltbray

~1,500t

of steel salvaged
from the donor building

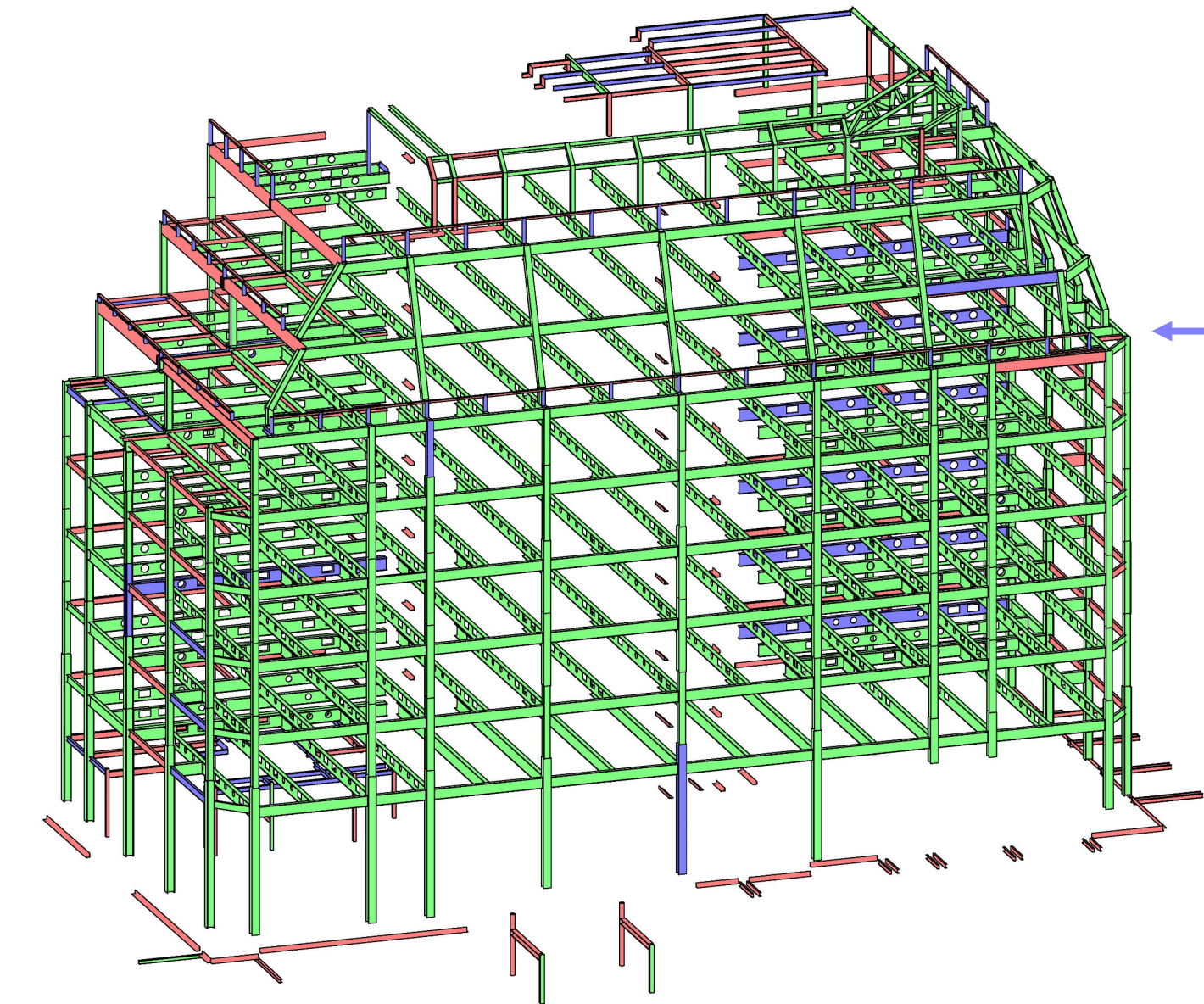
emr REUSABLE
STEELS

RECIPIENT 2: 2 ALDERMANBURY SQUARE

The new building designed by architects Allies and Morrison will reuse steel from the donor building.

Surplus stored by emr REUSABLE
STEELS

Recycled



RECIPIENT 1: 180 PICCADILLY

~74% of the structure uses reclaimed steel. 66.6% is from the donor building and 7.4% is from wider EMR stock. By utilising Cleveland Steel Stock there is potential to increase this further.

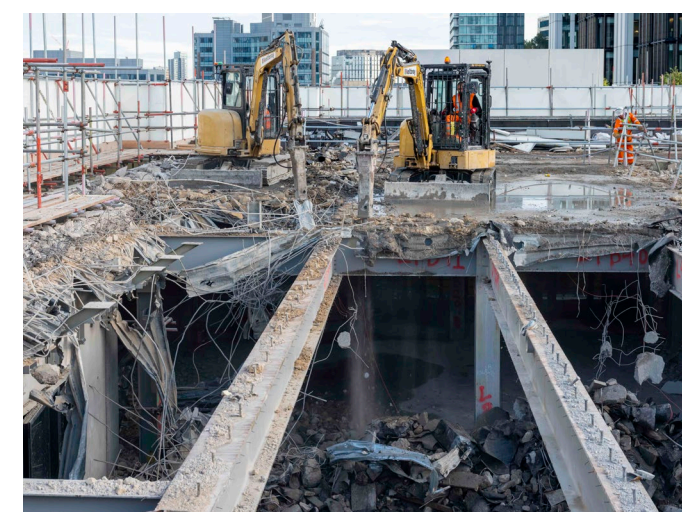
Potential additional 3.7% of reused steel and 0.7% recovered steel from Cleveland Steel's stock. Subject to testing.

CST
CLEVELAND STEEL & TUBES LTD

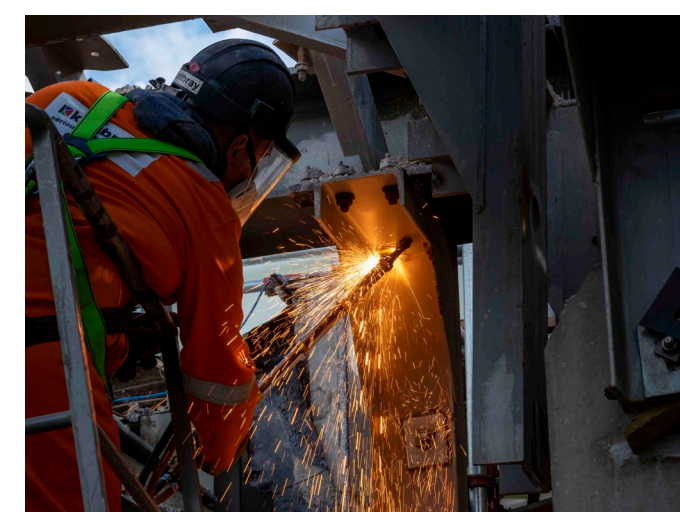
REFINING REUSE PROCESSES



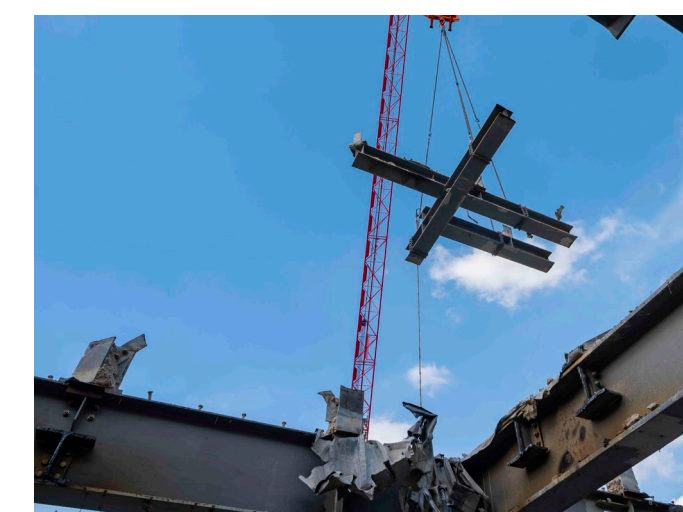
1 Pre-demolition survey and production of a steel inventory containing initial analysis of steel condition



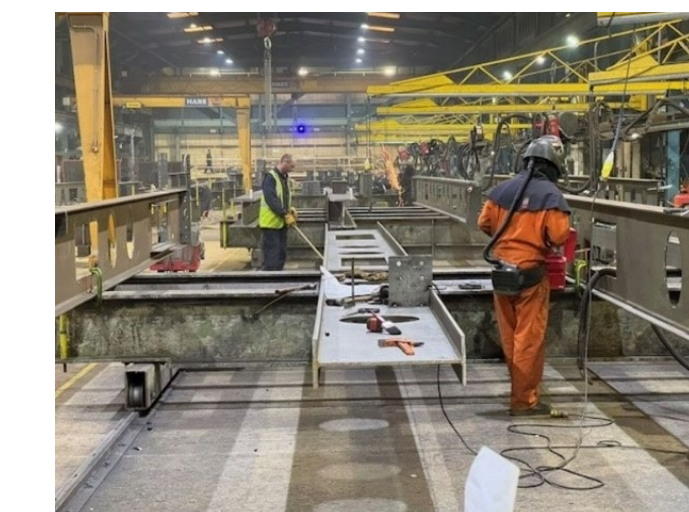
2 Demolition Contractor (Keltbray) carefully dismantled the building, salvaging as much steel as possible



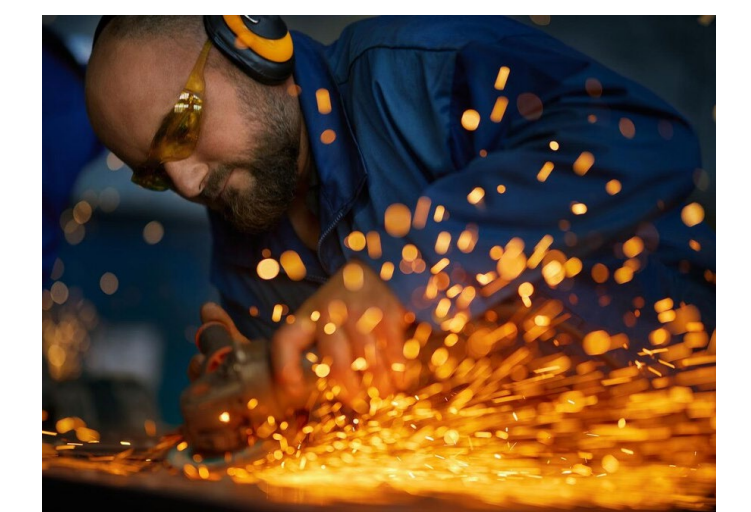
3 Removal of steel connections and fixings



4 Craning steel sections for transportation to EMR testing facility



5 Cleaning, testing, grading and photographing every steel member to generate a reuse schedule



6 Preparing steel members to be matched into the structural model