

Cryptus Security

 Angry IP-Scanner



Angry IP Scanner

- Angry IP Scanner is an open-source and cross-platform network scanner
- Features include IP Address scanning, port scanning, and NetBIOS
- Angry IP Scanner works by pinging each IP address
- It is light weight (doesn't require installation) and fast because of its implementation of a multithread approach

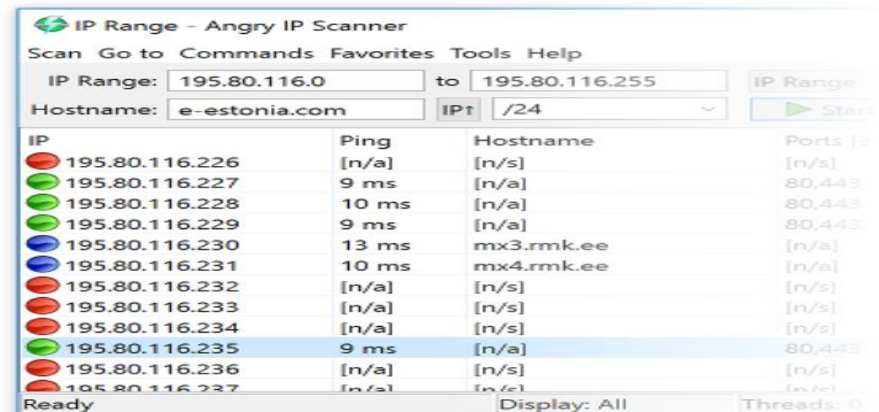


Features

- Scans local networks as well as Internet
- IP Range, Random or file in any format
- Exports results into many formats
- Extensible with many data fetchers
- Provides command-line interface
- Over 29 million downloads
- Free and open-source
- Works on Windows, Mac and Linux
- Installation not required

[Free Download](#)

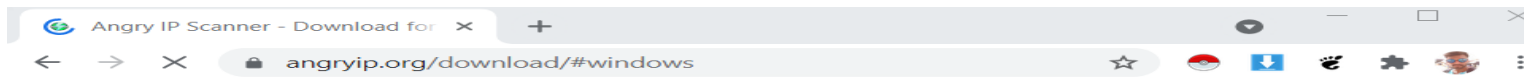
Description



Download

For download Angry Ip Scanner

Visit: <https://angryip.org/download/#windows>



Download for Windows, Mac or Linux

Windows

Current

Download version 3.7.6 below or [browse more releases](#) or [even older releases](#).

- [32/64-bit Installer](#) - autodetects 32/64-bit Java, for Windows 7/8/10
- [Executable for 64-bit Java](#) - for 64-bit Java (eg AdoptOpenJDK) on Windows 7/8/10
- [Executable for 32-bit Java](#) - for older installations of Oracle Java for Windows

At least [Java/OpenJDK 8](#) is required on your machine, but 11 is recommended.

Legacy

This is an older generation of Angry IP Scanner.

Download version 2.21 below (120 kb) or [browse all 2.x releases](#)

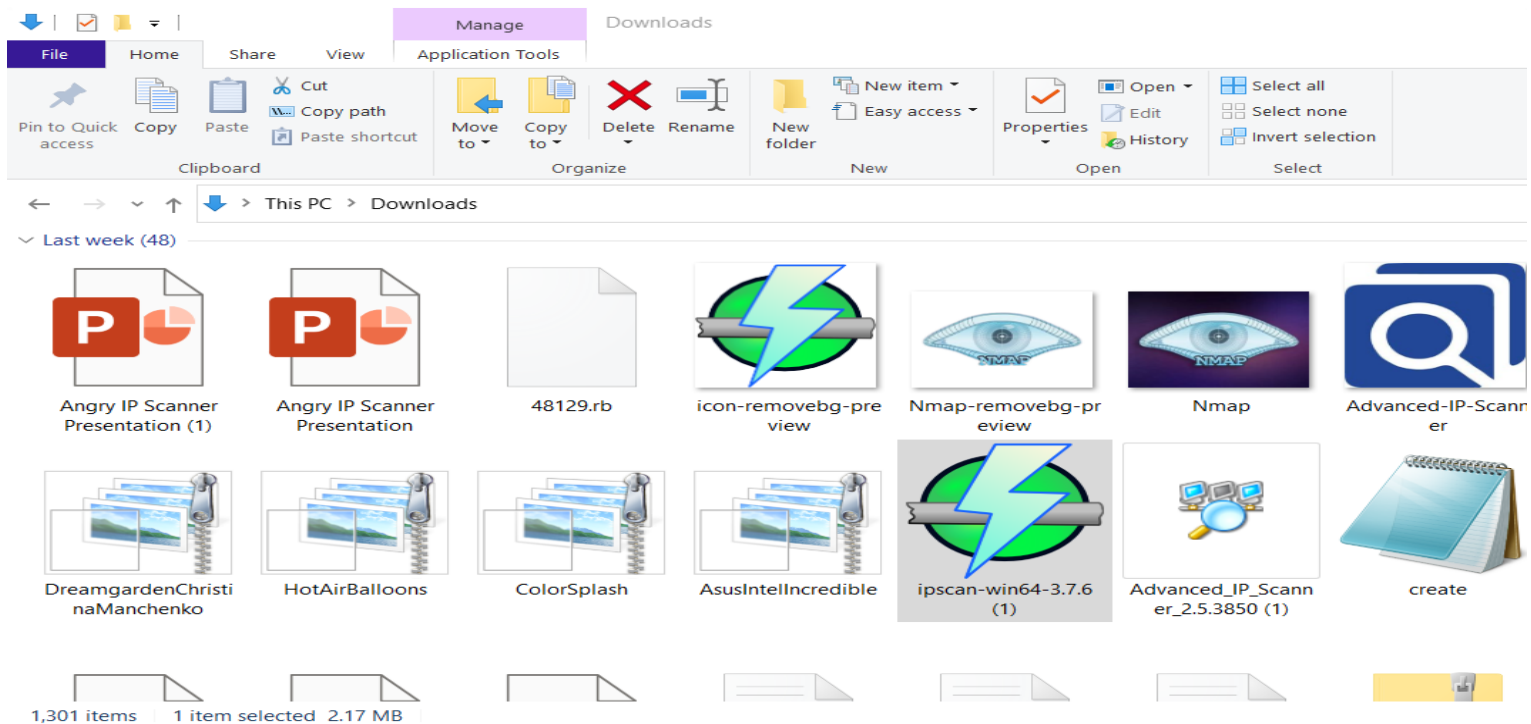
- [ipscan.exe](#) for Windows 98/ME/2000/XP

If you get warnings about viruses or trojans, read [this FAQ entry](#).

No installation is needed. However, you may use the Install program... from the Utils menu in order to create shortcuts, etc.

How to Use

➤ Double click the icon for Angry IP Scanner



Activity

- Angry IP Scanner will load with a default scan ready to run, click start
- What do you see?
- This will load a default scan of IP addresses within a range. As of right now, it will only scan your computer and give the results of a ping from your computer

The screenshot shows the Angry IP Scanner application window. The title bar reads "IP Range - Angry IP Scanner". The menu bar includes "Scan", "Go to", "Commands", "Favorites", "Tools", and "Help". The main interface has input fields for "IP Range:" (192.168.208.0 to 192.168.208.255), "Hostname:" (LAPTOP-4GOFSSSL), and "Netmask:" (192.168.208.255). A "Start" button is visible. Below the input fields is a table with columns: IP, Ping, Hostname, Ports [3+], and Web detect. The table shows results for the first 15 IP addresses in the range. The first IP, 192.168.208.1, is highlighted in green and has a ping of 0 ms. The other IPs are marked with red circles and have a ping of [n/a]. A right-hand pane titled "IP address details" shows the details for the selected IP: IP: 192.168.208.1, Ping: 0 ms, Hostname: 192.168.208.1, Ports: 443, and Web detect: [n/a]. At the bottom, there is a "Comment" text box. The status bar at the very bottom shows "Ready", "Display: All", and "Threads: 0".

IP	Ping	Hostname	Ports [3+]	Web detect
192.168.208.1	0 ms	192.168.208.1	443	[n/a]
192.168.208.2	[n/a]	[n/s]	[n/s]	[n/s]
192.168.208.3	[n/a]	[n/s]	[n/s]	[n/s]
192.168.208.4	[n/a]	[n/s]	[n/s]	[n/s]
192.168.208.5	[n/a]	[n/s]	[n/s]	[n/s]
192.168.208.6	[n/a]	[n/s]	[n/s]	[n/s]
192.168.208.7	[n/a]	[n/s]	[n/s]	[n/s]
192.168.208.8	[n/a]	[n/s]	[n/s]	[n/s]
192.168.208.9	[n/a]	[n/s]	[n/s]	[n/s]
192.168.208.10	[n/a]	[n/s]	[n/s]	[n/s]
192.168.208.11	[n/a]	[n/s]	[n/s]	[n/s]
192.168.208.12	[n/a]	[n/s]	[n/s]	[n/s]
192.168.208.13	[n/a]	[n/s]	[n/s]	[n/s]
192.168.208.14	[n/a]	[n/s]	[n/s]	[n/s]
192.168.208.15	[n/a]	[n/s]	[n/s]	[n/s]

Activity

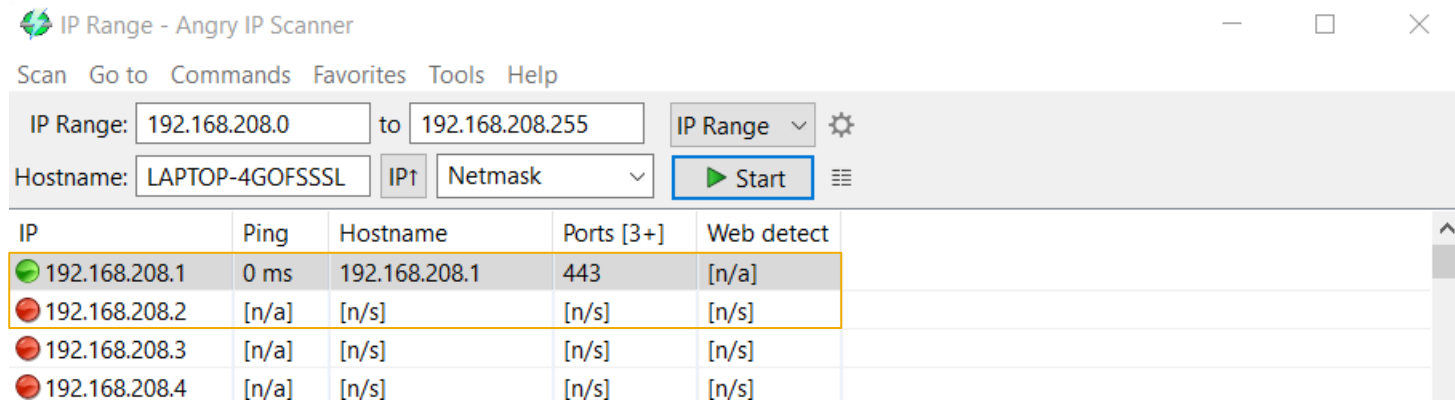
- Now let's do a scan of all computers on the same network as your computer.
- Switch the type of search to "IP Range" (this should already be set)
- Switch the range of IP Addresses to "255...0".
- Click the start button

The screenshot shows the 'Angry IP Scanner' application window. The title bar reads 'IP Range - Angry IP Scanner'. The menu bar includes 'Scan', 'Go to', 'Commands', 'Favorites', 'Tools', and 'Help'. The main interface has input fields for 'IP Range' (192.168.208.0 to 192.168.208.255), 'Hostname' (LAPTOP-4GOFSSSL), and a dropdown for 'IP1' (Netmask). A 'Start' button is highlighted with a blue box. Below the input fields is a table with columns: IP, Ping, Hostname, Ports [3+], and Web detect. The table lists 15 IP addresses from 192.168.208.1 to 192.168.208.15. The first row (192.168.208.1) shows a green status icon, 0 ms ping, and port 443. The remaining rows show red status icons and [n/a] for ping, hostname, ports, and web detect. To the right of the table is a panel titled 'IP address details' for the selected IP 192.168.208.2, showing fields for IP, Ping, Hostname, Ports, and Web detect, all with [n/a] values. At the bottom of the window, a status bar shows 'Ready', 'Display: All', and 'Threads: 0'.

IP	Ping	Hostname	Ports [3+]	Web detect
192.168.208.1	0 ms	192.168.208.1	443	[n/a]
192.168.208.2	[n/a]	[n/s]	[n/s]	[n/s]
192.168.208.3	[n/a]	[n/s]	[n/s]	[n/s]
192.168.208.4	[n/a]	[n/s]	[n/s]	[n/s]
192.168.208.5	[n/a]	[n/s]	[n/s]	[n/s]
192.168.208.6	[n/a]	[n/s]	[n/s]	[n/s]
192.168.208.7	[n/a]	[n/s]	[n/s]	[n/s]
192.168.208.8	[n/a]	[n/s]	[n/s]	[n/s]
192.168.208.9	[n/a]	[n/s]	[n/s]	[n/s]
192.168.208.10	[n/a]	[n/s]	[n/s]	[n/s]
192.168.208.11	[n/a]	[n/s]	[n/s]	[n/s]
192.168.208.12	[n/a]	[n/s]	[n/s]	[n/s]
192.168.208.13	[n/a]	[n/s]	[n/s]	[n/s]
192.168.208.14	[n/a]	[n/s]	[n/s]	[n/s]
192.168.208.15	[n/a]	[n/s]	[n/s]	[n/s]

Activity

- You should notice the alive hosts and dead hosts. Alive hosts are denoted by Green dots, dead hosts are denoted by Red dots.



Activity

- Now choose an alive host
- On your keyboard hit the windows key, and the “r” key
- Type “cmd”
- Now type a ping command followed by the IP address of the alive host you chose.

0% Select Administrator: Command Prompt

```
Microsoft Windows [Version 10.0.19041.1110]
(c) Microsoft Corporation. All rights reserved.

C:\WINDOWS\system32>ping 192.168.208.1

Pinging 192.168.208.1 with 32 bytes of data:
Reply from 192.168.208.1: bytes=32 time<1ms TTL=128
Reply from 192.168.208.1: bytes=32 time<1ms TTL=128
Reply from 192.168.208.1: bytes=32 time<1ms TTL=128
Reply from 192.168.208.1: bytes=32 time<1ms TTL=128

Ping statistics for 192.168.208.1:
    Packets: Sent = 4, Received = 4, Lost = 0 (0% loss),
    Approximate round trip times in milli-seconds:
        Minimum = 0ms, Maximum = 0ms, Average = 0ms

C:\WINDOWS\system32> |
```


Activity

- Now choose a dead host
- On your keyboard hit the windows key, and the “r” key. Type “cmd”
- Now type a ping command followed by the IP address of the dead host you chose

Administrator: Command Prompt

```
C:\WINDOWS\system32>ipconfig 192.168.208.2
```

```
Error: unrecognized or incomplete command line.
```

```
USAGE:
```

```
ipconfig [/allcompartments] [/? | /all |  
        /renew [adapter] | /release [adapter] |  
        /renew6 [adapter] | /release6 [adapter] |  
        /flushdns | /displaydns | /registerdns |  
        /showclassid adapter |  
        /setclassid adapter [classid] |  
        /showclassid6 adapter |  
        /setclassid6 adapter [classid] ]
```

```
where
```

```
adapter          Connection name  
                  (wildcard characters * and ? allowed, see examples)
```

```
Options:
```

```
/?              Display this help message  
/all            Display full configuration information.  
/release        Release the IPv4 address for the specified adapter.  
/release6       Release the IPv6 address for the specified adapter.  
/renew          Renew the IPv4 address for the specified adapter.  
/renew6         Renew the IPv6 address for the specified adapter.  
/flushdns       Flushes the DNS Resolver cache.
```

Activity

- Switch the type of search to random
- Switch the count to 50
- You'll notice that not all IP addresses returned are from the same subnet

Random - Angry IP Scanner

Scan Go to Commands Favorites Tools Help

Base IP: 192.168.208.1 IP Mask: 255.0.0.0 Random [v] [g]

Hostname: LAPTOP-4GOFSSSL IP↑ Count 100 [v] [g] Start [g]

IP	Ping	Hostname	Ports [3+]	Web detect
192.49.14.106	[n/a]	[n/s]	[n/s]	[n/s]
192.34.16.222	[n/a]	[n/s]	[n/s]	[n/s]
192.242.241.78	[n/a]	[n/s]	[n/s]	[n/s]
192.85.199.133	[n/a]	[n/s]	[n/s]	[n/s]
192.180.186.192	295 ...	cpe-192-180-186...	[n/a]	[n/a]
192.11.11.251	[n/a]	[n/s]	[n/s]	[n/s]
192.233.125.183	[n/a]	[n/s]	[n/s]	[n/s]
192.231.178.212	[n/a]	[n/s]	[n/s]	[n/s]
192.82.95.74	[n/a]	[n/s]	[n/s]	[n/s]
192.248.149.193	[n/a]	[n/s]	[n/s]	[n/s]
192.220.131.155	[n/a]	[n/s]	[n/s]	[n/s]
192.157.88.17	289 ...	[n/a]	[n/a]	[n/a]
192.241.149.206	247 ...	[n/a]	80,443	[n/a]
192.19.52.134	[n/a]	[n/s]	[n/s]	[n/s]
192.110.6.62	[n/a]	[n/s]	[n/s]	[n/s]

IP address details

IP: 192.241.149.206

Ping: 247 ms

Hostname: [n/a]

Ports: 80,443

Web detect: [n/a]

Comment

Wrap up

- As you saw Angry IP Scanner is a very fast IP address and port scanner
- It returns useful information for any network admin managing their network
- Although useful, this tool could also be used for malicious work by sniffing packets from networks where a user is not welcomed