

WIRE PROCESSING EQUIPMENT



UNCOIL. DRAW. STRAIGHTEN. CUT.

RMG designs and builds equipment to uncoil, draw, straighten and cut coiled wire to a length. Our solutions can be found in countless manufacturing processes that begin with coiled wire - where we provide a critical step in production to ensure wire is ready to be manufactured into a usable component or finished product.

RMG has a long history of providing equipment to the automotive, aerospace, concrete/construction, industrial, wire-forming, and consumer product industries, where customers benefit greatly from the experience of our sales and engineering professionals. Our teams continually work with a sense of urgency to provide comprehensive and unmatched support - from equipment design, to delivery, to genuine replacement parts and service.

At the end of the day, it is companies that demand durable, high-performance wire processing equipment who rely on RMG to deliver on that promise worldwide - not only with quality products and outstanding customer support, but with competitive prices and lead times.

TABLE OF CONTENTS

STRAIGHTEN & CUT	1
WIRE DRAWERS	7
DESCALERS	14
RECOILERS	15
POINTERS	16
PAY-OFFS	17
PLANE STRAIGHTENERS	23
OVERHUNG LOAD ADAPTERS	25



STRAIGHTEN & CUT



LOW CARBON STEEL

RMGSERIES

0.050" to 0.500" (1.3mm to 12.7mm)

4

MEDIUM CARBON ALLOYS

LEWISSERIES

0.050" to 0.750" (1.3mm to 19.0mm)

5

HIGH CARBON AND SPECIALTY ALLOYS

SYNCHRO CUTSERIES

0.098" to 0.875" (2.5mm to 22.0mm)

6

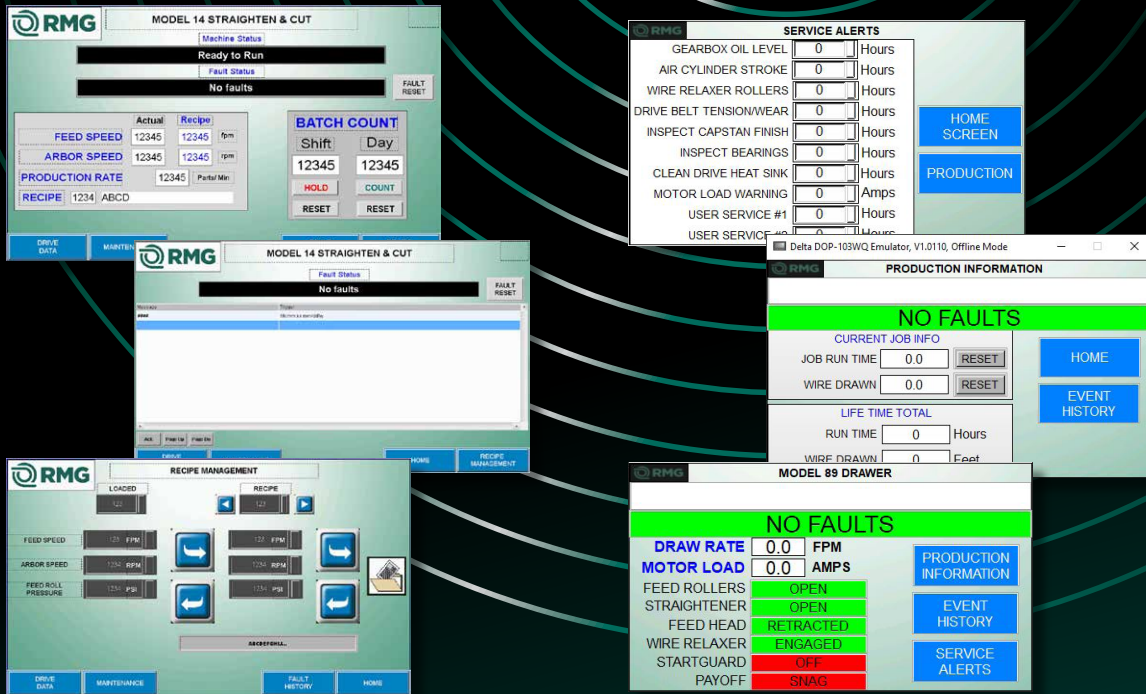
BUILT FOR THE SPEED OF PRODUCTION

For over 100 years, RMG has been delivering high-performance Straighten & Cut machines, built with the features that wire processing equipment needs to keep up with the production process. Our machines come standard with an easy-to-adjust rotary arbor system and the patented Clutchless Cutter for unmatched straightening and cutting capabilities with less maintenance. In addition, RMG is the only OEM supplier for FE, Lewis, and GC Patterson - with expert sales, training, and service to keep you up and running.



ENHANCEMENTS FOR INDUSTRY4.0

RMG offers several technology packages with our equipment that reduce setup time, increase production, and keep your supervisors connected and aware of production and downtime.



TOUCH SCREEN FEATURES

- Feed, arbor, and cut off load monitors alert the operator if presets are exceeded indicating excessive load or wear.
- Recipe management program saves key production settings so setups are faster, consistent and result in less scrap.
- Preventative maintenance reminders based on time, cycle, performance, and customer preset.
- Fault history maintains the last 100 fault messages to date with intuitive production and fault information.
- Production rates, counts, and targets are clearly displayed.
- Touch Screens can be viewed on a mobile device or computer for live production monitoring.

REMOTE DIAGNOSTICS CAPABILITY

- Optional remote communications module allows RMG to remotely troubleshoot and program your equipment should the need arise.

SAFETY

At RMG we are continually evolving our safety systems. New features include:

- Motion monitored locking arbor door. The arbor door will not release until all arbor motion has stopped.
- All VFD drives utilize safe torque off complying with IEC 61800-5-2 safety standards.

DCS & SCADA CONNECTIVITY

- RMG can package and present production and control data to your Distributed Control System or Supervisory Control system in any standardized format.

DOWN TO THE WIRE



LOW CARBON STEEL RMG SERIES

For processing low carbon steel, the RMG Series covers a diameter range of 0.050" to 0.500" (1.3mm to 12.7mm) and is ideally suited for quick changeovers from one wire diameter to another. Behind our machines is a team of expert sales and service technicians, along with extensive inventory of parts and tooling.



STANDARD FEATURES

- Able to handle up to 70,000psi (485 N/mm²) UTS material
- Patented clutchless cutter
- Variable speed arbor and feed heads
- Single die offset, variable pitch arbor
- Arbor, cutter, and feed head powered by independent VFD and premium efficiency motors
- Micro fine release assembly, with length adjustments up to 1" (25.4mm) while the machine is running
- Sealed arbor bearing system for low maintenance and extended life
- Programmable safety shut down timer, stops machine if a feeding problem restricts wire and reduces scrap
- Programmable parts batch counter, stops machine when desired number of cut parts is reached

OPTIONS & ACCESSORIES

- Reverse frame (right to left wire flow)
- Gravity lube system with lube box for wire
- M1010A Huskie cutter
- Additional guide bar, gauge rod and clamp block
- Sound dampening catch pan
- Commissioning and training
- Additional sets of tooling
- Parts discharge ramp
- Batch ramp works with programmable batch counter
- Advanced diagnostics package for continuous machine monitoring
- Recipe management software for production control and operator setup

MODELS

MODEL 14

Wire Diameter Capacity:
0.054" - 0.250" (1.4mm - 6.4mm)

MODEL 15

Wire Diameter Capacity:
0.062" - 0.315" (1.6mm - 8.0mm)

MODEL 16

Wire Diameter Capacity:
0.062" - 0.375" (1.6mm - 9.5mm)

MODEL 27

Wire Diameter Capacity:
0.125" - 0.437" (3.2mm - 11.1mm)

MODEL 28

Wire Diameter Capacity:
0.125" - 0.500" (3.2mm - 12.7mm)

MEDIUM CARBON ALLOYS

LEWIS SERIES

The Lewis Series covers a diameter range of 0.050" to 0.750" (1.3mm to 19.0mm) to process medium carbon alloys for short part applications with variable speed control. With machines still running for more than 90 years, these machines come standard with the triple offset, five die arbor and our patented Clutchless Cutter for 24/7 dependable performance with less maintenance.



STANDARD FEATURES

- Able to handle up to 90,000psi (620 N/mm²) UTS material
- Patented clutchless cutter
- Variable speed arbor and feed heads
- Auto cycle control of cutter for improved productivity of short part lengths
- Arbor, cutter, and feed heads powered by independent VFD and premium efficiency motors
- Micro fine release assembly, with length adjustments up to 1" (25.4mm) while the machine is running
- Entry wire guide assembly with lubrication box
- Programmable safety shut down timer, stops machine if a feeding problem restricts wire and reduces scrap
- Programmable parts batch counter, stops machine when desired number of cut parts is reached

OPTIONS & ACCESSORIES

- Gravity lube system
- M1010A Huskie cutter
- Hour meter
- Hardened guide bar and clapper bar
- Sound dampening catch pan
- Commissioning and training
- Additional set of tooling
- Parts discharge ramp
- Batch ramp works with programmable batch counter
- Advanced diagnostics package for continuous machine monitoring
- Recipe management software for production control and operator setup

MODELS

MODEL 1SHVF

Wire Diameter Capacity:
0.050" - 0.135" (1.3mm - 3.4mm)

MODEL 3SV16

Wire Diameter Capacity:
0.062" - 0.188" (1.6mm - 4.8mm)

MODEL 5SV16

Wire Diameter Capacity:
0.062" - 0.315" (1.6mm - 8.0mm)

MODEL 3SV8

Wire Diameter Capacity:
0.156" - 0.375" (4.0mm - 10.0mm)

MODEL 4SV8

Wire Diameter Capacity:
0.188" - 0.500" (4.8mm - 12.7mm)

MODEL 5SV8

Wire Diameter Capacity:
0.315" - 0.630" (8.0mm - 16.0mm)

MODEL 6SV8

Wire Diameter Capacity:
0.315" - 0.750" (8.0mm - 19.1mm)

HIGH CARBON AND SPECIALTY ALLOYS SYNCHRO CUT SERIES

For high carbon and specialty alloys, the Synchro Cut Series covers a diameter range of 0.098" to 0.750" (2.5mm to 19.0mm). Featuring the "industry-standard" Lewis five die arbor, patented Clutchless Cutter, and the innovative travel cut shear for continuous material movement, these machines truly keep up with the pace of production.



STANDARD FEATURES

- Able to handle up to 250,000+psi (1725+ N/mm²) UTS material
- Travel cut shear for continuous material movement
- Variable speed arbor and feed heads
- Arbor, cutter, and feed heads powered by independent VFD and premium efficiency motors
- Laser trip flag release assembly, with length adjustments up to 1" (25.4mm) while the machine is running
- Entry wire guide assembly with lubrication box
- Programmable safety shut down timer, stops machine if a feeding problem restricts wire and reduces scrap
- Programmable parts batch counter, stops machine when desired number of cut parts is reached
- Fault/Status messaging with history
- Recipe management
- Touch panel and PLC
- PLC I/O status display for diagnostics

OPTIONS & ACCESSORIES

- Gravity lube system
- M1010A Huskie cutter
- Hour meter
- Hardened guide bar and clapper bar
- Sound dampening catch pan
- Commissioning and training
- Additional sets of tooling
- Parts discharge ramp
- Batch ramp works with programmable batch counter
- Advanced diagnostics package for continuous machine monitoring
- Recipe management software for production control and operator setup
- Maintenance management schedule

MODELS

MODEL 8TM

Wire Diameter Capacity:
0.062" - 0.315" (1.6mm - 8.0mm)

MODEL 12TM

Wire Diameter Capacity:
0.188" - 0.500" (4.8mm - 12.7mm)

MODEL 16TM

Wire Diameter Capacity:
0.315" - 0.630" (8.0mm - 16.0mm)

MODEL 19TM

Wire Diameter Capacity:
0.375" - 0.750" (9.5mm - 19.1mm)

MODEL 22TM

Wire Diameter Capacity:
0.438" - 0.875" (11.1mm - 22.2mm)

WIRE DRAWERS



MCRSERIES | 9
0.050" to 0.315" (1.3mm to 8.0mm)

PSRSERIES | 10
0.062" to 0.438" (1.6mm to 11.1mm)

PDRSERIES | 11
0.125" to 0.688" (3.2mm to 17.5mm)

PQRSERIES | 12
0.250" to 1.380" (6.4mm - 35.0mm)

SPACE SAVERSERIES | 13
0.098" to 0.630" (2.5mm to 16.0mm)

DRAWING ON DECADES OF EXPERIENCE

RMG Wire Drawers are used by virtually every major fastener and bearing manufacturer in the world to create a consistent and controlled flow of wire going into production machines – from micro parts formers to 35.0mm headers and all points in-between. With several patents for wire processing innovations, manufacturers benefit from exact diameter control, improved metal formability, longer tool life, and lowered material costs, which lead to a competitive edge and improved profits.

ONE BOLT.
ONE WRENCH.
ONE MINUTE!



The new Quick Change reduces the changeover setup time by 80%. With Quick Change, operators can change wire relaxer rolls easily and safely without removing the yoke assembly and without special tools. Plus, maintenance teams no longer need to be involved in the process.

INDUSTRY 4.0 FEATURES AVAILABLE

See page 3 for details.



Feed head and
straightener with
walk along remote

Operator pendant
with HMI screen

Fully enclosed door assembly
offers complete access to the
capstan working area

D2 tool steel capstan for
exceptional life and reduced
maintenance costs

MCR SERIES

The MCR Series is perfect for small diameter applications ranging from 0.050" to 0.315" (1.3mm - 8.0mm). With exceptional capstan life and improved tooling life, these machines have an air brake, manual clamp roller and spring compensator to provide precision control.

STANDARD FEATURES

- Patented one-way clutch wire relaxer roll
- Axial movement of wire relaxer for exit wrap alignment
- Durable through-hardened D2 tool steel capstan
- Full capstan cover with electrical interlock allowing full access to capstan
- Gripper chain
- Two hand jogging with all operator controls
- STARTGARD (production machine interlock)
- SLIPGARD (forward compensator over travel switch)
- TANGLEGARD (production machine interlock)

OPTIONS & ACCESSORIES

- Reverse frame (left to right wire flow)
- Twelve o'clock clamp roller
- End of coil detector
- Annular roller assembly
- 9" (228.0mm) Aluminum compensator wheel
- Remote grease points
- Pointer tooling
- Operator pendant control
- Exit wire guide assembly
- M1010A Huskie cutter
- HMI/touch panel
- Advanced diagnostics package
- Maintenance management schedule
- Alarm history

MODELS

MODEL 200

Capstan Diameter: 10" (255.0mm)
 Maximum Diameter after draw: 0.100" (2.5mm)
 Speed Range: 5 - 45FPM (1.5 - 13.5MPM)

MODEL 500

Capstan Diameter: 20" (500.0mm)
 Maximum Diameter after draw: 0.315" (8.0mm)
 Speed Range: 5 - 100FPM (1.5 - 30.5MPM)



PSR SERIES

For wire diameter ranging from 0.062" to 0.438" (1.6mm to 11.0mm), the PSR machines feature a pneumatic, single roll wire relaxer and compensator arm to provide greater control over your wire drawing processes. Coupled with comprehensive diagnostics, these machines provide reduced downtimes and less maintenance.

STANDARD FEATURES

- Patented one-way clutch wire relaxer roll
- Axial movement of wire relaxer for exit wrap alignment
- Durable through-hardened D2 tool steel capstan
- Full capstan cover with electrical interlock allowing full access to capstan
- Gripper chain
- Two hand jogging with all operator controls
- STARTGARD (production machine interlock)
- SLIPGARD (forward compensator over travel switch)
- TANGLEGARD (production machine interlock)

OPTIONS & ACCESSORIES

- Reverse frame (left to right wire flow)
- Twelve o'clock clamp roller
- End of coil detector
- Annular roller assembly
- 9" (228.0mm) Aluminum compensator wheel
- Remote grease points
- Pointer tooling
- Operator pendant control
- Exit wire guide assembly
- M1010A Huskie cutter
- HMI/touch panel
- Advanced diagnostics package
- Maintenance management schedule
- Alarm history

MODELS

MODEL 56

Capstan Diameter: 24" (600.0mm)
Maximum Diameter after draw: 0.375" (9.5mm)
Speed Range: 5 - 125FPM (1.5 - 38.0MPM)

MODEL 67

Capstan Diameter: 28" (700.0mm)
Maximum Diameter after draw: 0.438" (11.1mm)
Speed Range: 5 - 330FPM (1.5 - 100.0MPM)



PDR SERIES

The thru-hardened tool steel capstan on the PDR series handles a diameter range of 0.125" to 0.688" (3.2mm to 17.5mm). Our Quick Change feature, improved tooling life, and machine diagnostics makes this an ideal machine for reducing material inventory and improving material properties.

STANDARD FEATURES

- Patented one-way clutch dual wire relaxer roll
- Axial movement of wire relaxer for exit wrap alignment
- Durable through-hardened D2 tool steel capstan
- Full capstan cover with electrical interlock allowing full access to capstan
- Gripper chain
- Two hand jogging with all operator controls
- Operator pendant control
- STARTGARD (production machine interlock)
- SLIPGARD (forward compensator over travel switch)
- TANGLEGARD (production machine interlock)

OPTIONS & ACCESSORIES

- Reverse frame (left to right wire flow)
- Twelve o'clock clamp roller
- End of coil detector
- Annular roller assembly
- 9" (228.0mm) Aluminum compensator wheel
- Remote grease points
- Pointer tooling
- Exit wire guide assembly
- M1116 Huskie cutter
- 6" (152.0mm) Feed head and straightener with walk along remote
- HMI/touch panel
- Advanced diagnostics package
- Maintenance management schedule
- Alarm history
- Rod guide ring

MODELS

MODEL 78

Capstan Diameter: 28" (700.0mm)
 Maximum Diameter after draw: 0.500" (12.7mm)
 Speed Range: 10 - 330FPM (3.0 - 100.0MPM)

MODEL 89

Capstan Diameter: 36" (900.0mm)
 Maximum Diameter after draw: 0.562" (14.3mm)
 Speed Range: 10 - 330FPM (3.0 - 100.0MPM)

MODEL 910

Capstan Diameter: 36" (900.0mm)
 Maximum Diameter after draw: 0.625" (16.0mm)
 Speed Range: 15 - 330FPM (5 - 100.0MPM)

MODEL 1011

Capstan Diameter: 44" (1,100.0mm)
 Maximum Diameter after draw: 0.688" (17.5mm)
 Speed Range: 5 - 330FPM (1.5 - 100.0MPM)



PQRSERIES

The PQR Series processes wire diameters ranging from 0.25" to 1.38" (6.4mm to 35.0mm). These machines combine decades of experience and worldwide customer input to provide the maximum amount of tool life and production efficiencies - featuring Quick Change, a pneumatic, quadruple roll wire relaxer and compensator arm.

STANDARD FEATURES

- Patented one-way clutch quad wire relaxer roll
- Axial movement of wire relaxer for exit wrap alignment
- Durable through-hardened D2 tool steel capstan
- Full capstan cover with electrical interlock allowing full access to capstan
- Gripper chain
- Two hand jogging with all operator controls
- STARTGARD (production machine interlock)
- SLIPGARD (forward compensator over travel switch)
- TANGLEGARD (production machine interlock)

OPTIONS & ACCESSORIES

- Reverse frame (left to right wire flow)
- Remote grease points
- M1116 Huskie cutter
- Advanced diagnostics package
- Maintenance management schedule
- Alarm history
- Rod guide ring
- Twelve o'clock and seven o'clock clamp roller
- End of coil detector
- Annular roller assembly
- Wire assist hoist
- Feed head and straightener with walk along remote
- HMI/touch panel

MODELS

MODEL 1214

Capstan Diameter: 44" (1,100.0mm)
Maximum Diameter after draw: 0.875" (22.1mm)
Speed Range: 10 - 150FPM (3.0 - 45.0MPM)

MODEL 1416

Capstan Diameter: 52" (1,300.0mm)
Maximum Diameter after draw: 1.0625" (27.0mm)
Speed Range: 3.0 - 150FPM (5 - 45.0MPM)

MODEL 1922

Capstan Diameter: 60" (1,500.0mm)
Maximum Diameter after draw: 1.380" (35.0mm)
Speed Range: 10 - 150FPM (3.0 - 45.0MPM)



SPACE SAVER SERIES

Our patented SpaceSaver Series combines our innovative wire drawing technology with our payoff turntable system to help customers better utilize valuable floor space without sacrificing wire drawing capabilities.

MODELS

MODEL 500SS

Capstan Diameter: 20" (500.0mm)
Maximum Diameter after draw: 0.315" (8.0mm)
Speed Range: 5 - 45FPM (1.5 - 13.5MPM)

MODEL 56SS

Capstan Diameter: 24" (600.0mm)
Maximum Diameter after draw: 0.375" (9.5mm)
Speed Range: 5 - 125FPM (1.5 - 38.0MPM)

MODEL 67SS

Capstan Diameter: 28" (700.0mm)
Maximum Diameter after draw: 0.438" (11.1mm)
Speed Range: 5 - 125FPM (1.5 - 38.0MPM)

MODEL 78SS

Capstan Diameter: 28" (700.0mm)
Maximum Diameter after draw: 0.500" (12.7mm)
Speed Range: 10 - 125FPM (3.0 - 38.0MPM)

MODEL 89SS

Capstan Diameter: 36" (900.0mm)
Maximum Diameter after draw: 0.563" (14.3mm)
Speed Range: 10 - 125FPM (3.0 - 38.0MPM)

MODEL 910SS

Capstan Diameter: 36" (900.0mm)
Maximum Diameter after draw: 0.625" (16.0mm)
Speed Range: 15 - 125FPM (5.0 - 38.0MPM)

OPTIONS & ACCESSORIES

- Twelve o'clock clamp roller
- End of coil detector
- Annular roller assembly
- 9" (228.0mm) Aluminum compensator wheel
- Remote grease points
- Pointer tooling
- Operator pendant control
- Exit wire guide assembly
- M1010A Huskie cutter
- HMI/touch panel
- Advanced diagnostics package
- Maintenance management schedule
- Alarm history

STANDARD FEATURES

- Patented frame design with an integral turntable
- Patented one-way clutch wire relaxer roll
- Axial movement of wire relaxer for exit wrap alignment
- Durable through-hardened D2 tool steel capstan
- Full capstan cover with electrical interlock allowing full access to capstan
- Gripper chain
- Two hand jogging with all operator controls
- STARTGARD (production machine interlock)
- SLIPGARD (forward compensator over travel switch)
- TANGLEGARD (production machine interlock)



DESCALERS

RMG Descalers are designed for trouble-free operation and can lower manufacturing costs when used to process hot-rolled rod versus bright basic wire. While descaled material may not produce cold-heading or plating quality components, virtually all other wire products can be produced with this method - especially painted or plastic-coated parts.



Model MD10 Descaler shown attached to Model 67 Wire Drawer

MODELS

MD10

Wire Diameter Capacity:
0.217" - 0.394" (5.5mm - 10.0mm)

MD14

Wire Diameter Capacity:
0.217" - 0.551" (5.5mm - 14.0mm)

MD19

Wire Diameter Capacity:
0.315" - 0.750" (8.0mm - 19.0mm)

STANDARD FEATURES

- Air wipe assembly for cleaning material as exiting the descaler
- Mounting provisions to RMG wire drawers
- Entrance guide assembly
- Scale collection provisions for easy removal and cleaning
- Provisions for dust collection
- Cover production interlock

SPECIFICATIONS

	Model MD10	Model MD14	Model MD19
Wire Diameter Range	0.217" - 0.394" (5.5mm - 10.0mm)	0.217" - 0.551" (5.5mm - 14.0mm)	0.315" - 0.750" (8.0mm - 19.0mm)
Bending Assembly	Two roll reverse with replaceable carbide inserts	Two roll reverse with replaceable carbide inserts	Two plane six roll reverse
Breaker Rolls	0.281" - 0.406" (7.0mm - 10.3mm) with 3.250" (82.5mm) pitch diameter	0.406" - 0.563" (10.3mm - 14.0mm) with 6" (152.4mm) pitch diameter	0.500" - 0.750" (12.0mm - 19.0mm)
Options	<ul style="list-style-type: none"> • Additional roll sizes available from 0.218" to 0.406" (5.5mm to 10.3mm) • Automatic powered string up 	<ul style="list-style-type: none"> • Additional roll sizes available from 0.218" to 0.563" (5.5mm to 14.0mm) 	<ul style="list-style-type: none"> • Additional roll sizes available from 0.218" to 0.750" (5.5mm to 19.0mm) • Snag arm assembly

RECOILERS

Companies that make their own finished coils rely on the ease of use and consistent results of RMG Recoilers. Designed and built to meet rugged demands, RMG Recoilers work hand-in-hand with descalers and wire drawing machines to complete the wire coiling process.

MODELS

REC375

Wire Diameter Capacity:
0.125"-0.375" (3.2mm - 9.5mm)

REC625

Wire Diameter Capacity:
0.25"-0.625" (6.4mm - 16.0mm)

REC750

Wire Diameter Capacity:
0.375"-0.75" (9.5mm - 19.0mm)



STANDARD FEATURES

- Wire flow is left to right
- Feed head controlled by a VFD with pneumatic pressure adjustment
- Annular roller assembly
- Three roll casting straightener
- Turntable driven by a premium efficiency motor with VFD
- Speed meter display
- Tubular carrier clamping assembly

SPECIFICATIONS

	Model REC375	Model REC625	Model REC750
Wire Diameter Range	0.125" - 0.375" (3.2mm - 9.5mm)	0.250" - 0.630" (6.3mm - 16.0mm)	0.38" - 0.75" (9.5mm - 19.0mm)
Feed Head	4 Roll	2 Roll	4 Roll
Turntable	50" (1,270.0mm)	60" (1,500.0mm)	60" (1,500.0mm)
Max Coil Weight	4,000 lbs (1,815kgs)	6,000 lbs (2,270kgs)	6,000 lbs (2,720kgs)
Speed	9.1 to 100FPM (2.77MPM to 30.50MPM) dependent on material, diameter, and customer application requirements	9.1 to 100FPM (2.77MPM to 30.50MPM) dependent on material, diameter, and customer application requirements	4.5 to 60FPM (1.37MPM to 18.29MPM) dependent on material, diameter, and customer application requirements

POINTERS

RMG Pointers come in a convenient, bench-top design that can be mounted on a wheeled cart to service several units. Each model comes standard with auto polarity correction and can be used with minimal or no interruption to production.



MODELS

OLPP-10

Wire Diameter Capacity:
0.031" - 0.630" (0.8mm - 16.0mm)

HPP-100

Wire Diameter Capacity:
0.630" - 1.000" (16.0mm - 25.4mm)

HPP-1750

Wire Diameter Capacity:
0.630" - 1.750" (16.0mm - 44.5mm)

STANDARD FEATURES

MODEL OLLPP-10

- Uses existing RA pull point tooling
- Generates 10,000 lbs (4,535kgs) of drawbox pull
- Single and three-phase construction

MODELS HPP-100 AND HPP-1750

- Simple die change capability
- Manual valves (joysticks)
- Three-phase construction
- Can be mounted to all RMG uncoilers
- Can be mounted to the DL-3300

MODEL OLPP-10 OPTIONS & ACCESSORIES

- Small or large pointer boxes
- Small, large, and extra-large die holders
- Small, large, and extra-large pointer dies

PAY-OFFS

RMG Pay-Off solutions are the simplest and safest methods for feeding the lead end of the wire into the straighten and cut or wire drawing machines - especially on large diameter material. With several maintenance-friendly pay-off solutions, production rates can be increased by up to 20% so that coil processing keeps pace with manufacturing.



NPTTSERIES | 18

Wire diameters up to 0.500" (12.7mm), non-powered, wire drawer applications

PATTSERIES | 19

Wire diameters up to 0.500" (12.7mm), powered, straighten and cut applications

UNCOILERSERIES | 20

Wire diameters 0.630" to 1.750" (16.0mm to 44.5mm)

AUTOMATCHSERIES | 21

Wire diameters 0.630" to 1.500" (16.0mm to 38.0mm)

FLIPPERSERIES | 22

Wire diameters up to 0.500" (12.7mm), continuous running

NPTT SERIES

Passive turntables are the most commonly used method of payoff for all types of wire or rod up to 0.500" (12.7mm) diameter. Requiring a minimal amount of floor space, these lower-cost units provide a great solution for long production runs due to the high weight capacity. The low center of gravity makes loading coils quick and easy.



MODELS

MODEL 8540

40" (1,016.0mm) diameter top plate
5,000 lbs (2,270kgs) weight capacity

MODEL 8450

50" (1,270.0mm) diameter top plate
4,000 lbs (1,815kgs) weight capacity

MODEL 8670

70" (1,778.0mm) diameter top plate
6,000 lbs (2,720kgs) weight capacity

MODEL 8760

60" (1,524.0mm) diameter top plate
7,000 lbs (3,175kgs) weight capacity

STANDARD FEATURES

- 18" x 18" (457.2mm x 457.2mm) spider
- Mechanical drag brake

OPTIONS & ACCESSORIES

- Adjustable spider 16" - 24" wide x 14" high (406.4mm - 610.0mm wide X 355.6mm high)
- Wire basket
- 2 and 4 pad air brakes
- TANGLEGARD - production machine interlock located in machine frame signals machine movement caused by a coil snag
- Elevated base (customer to specify wire height)

PATT SERIES

Powered turntables are excellent for production machines that can't generate enough pulling power for the coil weight. Productivity is dramatically improved (10% to 20%) by isolating the lead end of the wire from the weight of the coil.



MODELS

MODEL 6450

50" (1,270.0mm) diameter top plate with wire basket
Optional 60" (1,524.0mm) diameter top plate with wire basket

MODEL 7660

60" (1,524.0mm) diameter top plate with wire basket
Optional 70" (1,778.0mm) diameter top plate with wire basket

STANDARD FEATURES

- Direct drive gearbox
- 18" x 18" (457.2mm x 457.2mm) spider
- 6 to 60 rpm speed range
- VFD with premium efficiency motor
- Jog forward and reverse
- Electrical dynamic braking
- Production machine interlocks
- Automatic speed control
- Severe snag switch assembly

OPTIONS & ACCESSORIES

- Adjustable spider 16" - 24" wide x 14" high (406.4mm - 610.0mm wide X 355.6mm high)
- Coil lifter, roller assemblies (3 included)
- Two pad Pneumatic Brake
- Reverse rotation for run mode

UNCOILER SERIES

Traditional uncoilers are best suited for pre-straightening and feeding large diameter wire into a wire drawer or other type of production machine. Features are specifically designed to assist the operator in handling material over 0.630" (16.0mm) to 1.750" (44.5mm) diameter.

STANDARD FEATURES

- Pneumatic control for feed roll pressure and pre-straightener
- VFD with premium efficiency motor
- Manually operated speed control
- Snag detector shut down switch
- Light tower indicates machine status
- Wire guide and coil rollers

OPTIONS & ACCESSORIES

- 18" (457.0mm) mandrel extension
- Additional tooling
- 90 - 180° pivot base assembly
- End of coil detector switch assembly
- Additional straightener options available
- Risers for various wire line height
- Model CS-1438 cut off saw
- Operator pendant control
- "Y" roller assembly
- Portable remote control for setup
- TANGLEGARD (production machine interlock located in machine frame) prevents machine movement caused by a coil snag
- HMI/touch panel
- Advanced diagnostics package
- Maintenance management schedule
- Alarm history
- Hydraulic push pointer
- Wireless remote control to feed material to production machine

MODELS

MODEL 1216-02

Max. Material Diameter: 1.060" (27.0mm)
 Max. Coil Weight: 6,000 lbs (2,720kgs)
 8" (205mm) feed head and pre-straightening unit
 Wire Line Height: 50" (1,270.0mm)
 Mandrel Length: 70" (1,780.0mm)

MODEL 2024-02

Max. Wire Diameter: 1.500" (38.0mm)
 Max. Coil Weight: 6,000 lbs (2,720.0kgs)
 12" (305mm) feed head and pre-straightening unit
 Wire Line Height: 60" (1,525.0mm)
 Mandrel Length: 75" (1,905.0mm)

MODEL 2428-02

Max. Wire Diameter: 1.750" (44.1mm)
 Max. Coil Weight: 6,000 lbs (2,720kgs)
 12" (305mm) feed head and pre-straightening unit
 Wire Line Height: 65.500" (1,665.0mm)
 Mandrel Length: 75" (1,905.0mm)



AUTOMATCH SERIES

AutoMatch uncoilers handle material over 0.630" (16.0mm) and up to 1.500" (38.0mm) diameter and specifically designed to eliminate short feeds on production equipment that struggle to pull large, heavy coils. The unique design of AutoMatch isolates the coil (up to 6,000lbs or 2,721.55kg) and allows the production machine to only pull one loop. Pneumatic pressure allows the operator to control the amount of load the production machine sees.

STANDARD FEATURES

- Pneumatic control for feed roll pressure and pre-straightener
- Pneumatic control for the speed control arm
- VFD with premium efficiency motor
- Automatic speed control
- Snag detector shut down switch
- Light tower indicates machine status
- Wire guide and coil rollers

OPTIONS & ACCESSORIES

- 18" (457.0mm) mandrel extension
- Additional tooling
- 90 - 180° pivot base assembly
- End of coil detector switch assembly
- Additional straightener options available
- Risers for various wire line height
- Model CS-1438 cut off saw
- Operator pendant control
- "Y" roller assembly
- Portable remote control for setup
- TANGLEGARD prevents machine movement caused by a coil snag
- HMI/touch panel
- Advanced diagnostics package
- Maintenance management schedule
- Alarm history
- Hydraulic push pointer
- Wireless remote control to feed material to production machine

MODELS

MODEL AM2500

Max. Wire Diameter: 1.060" (27.0mm)
 Max. Coil Weight: 6,000 lbs (2,720kgs)
 8" (205mm) feed head and pre-straightening unit
 Wire Line Height: 50" (1,270.0mm)
 Mandrel Length: 70" (1,780.0mm)

MODEL AM3800

Max. Wire Diameter: 1.500" (38.0mm)
 Max. Coil Weight: 6,000 lbs (2,720kgs)
 12" (305mm) feed head and pre-straightening unit
 Wire Line Height: 60" (1,525.0mm)
 Mandrel Length: 75" (1,905.0mm)



FLIPPER SERIES

"Z" and "S" configurations of rod flippers are ideal for use with butt welding application. Downtime for coil changeover is basically eliminated as everything is done while the production machine is running. The Flipper series does require more floor space than any other type of pay-offs but is the most efficient solution for wire diameters up to 0.630" (16.0mm) when continuous running is required.

MODELS

MODEL ZF6500-L

"Z" configuration
 Max. coil weight each side is 6,000 lbs (2,720kgs)
 Usable Mandrel Length 92" (2,340.0mm)

MODEL ZF6500-XL

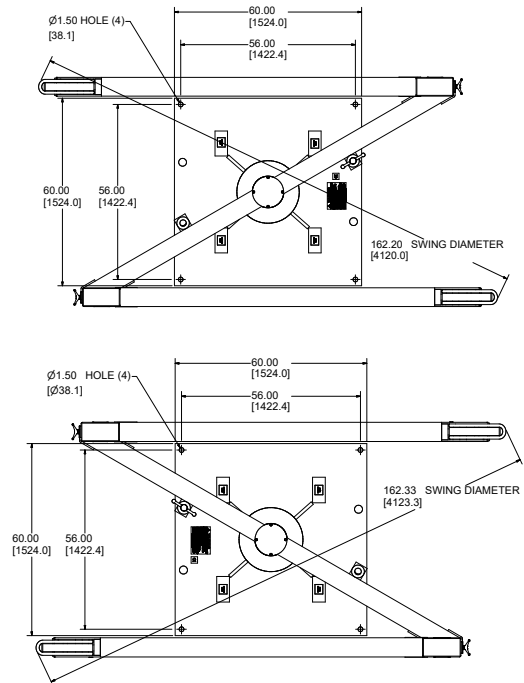
"Z" configuration (see layout)
 Max. coil weight each side is 6,000 lbs (2,720kgs)
 Usable Mandrel Length is 108" (2,745.0mm)

MODEL SF6500-L

"S" configuration (see layout)
 Max. coil weight each side is 6,000 lbs (2,720kgs)
 Usable Mandrel Length is 92" (2,340.0mm)

MODEL SF6500-XL

"S" configuration (see layout)
 Max. coil weight each side is 6,000 lbs (2,720kgs)
 Usable Mandrel Length is 108" (2,745.0mm)



STANDARD FEATURES

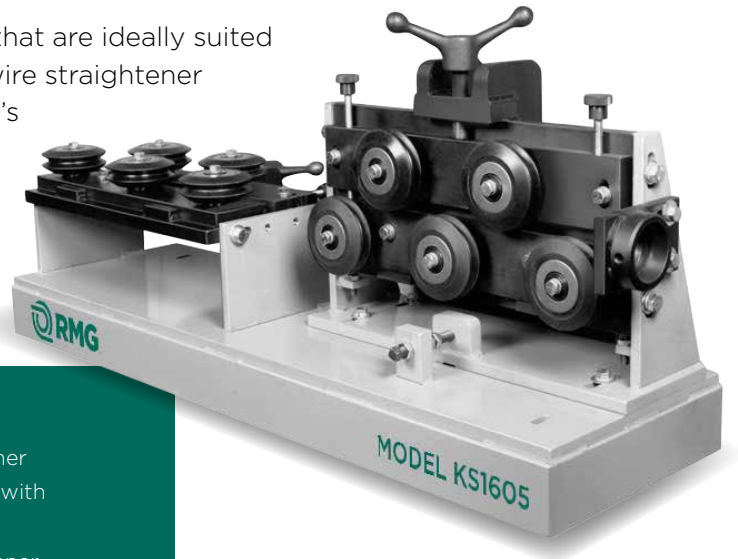
- Patented spring-loaded adjustment for lower restraining arm
- Maximum coil weight each side is 6000 lbs. (2720kgs)
- Useable mandrel length is 92" (2340.0mm)

OPTIONS & ACCESSORIES

- Saddle option for small diameter rod 7/32" - 1/2" (5.5mm - 12.7mm)
- Extended mandrel lengths are available - XL version
- Snag detector assembly

PLANE STRAIGHTENERS

RMG offers a broad range of wire straighteners that are ideally suited for the fastener industry. Our unique design of wire straightener machines provides the ability to control the wire's straightness with a single-knob control, in addition to the capability to accommodate a wide range of diameters by using the same frame and simply changing out the straightener rails.



STANDARD FEATURES

- Single adjustment straightness controls on wire straightener
- Quick-change rails to increase the overall diameter range with the same base
- Sealed, double row bearing construction on wire straightener
- Modular construction allowing customers to change wire flow from right-to-left to left-to-right
- Universal X, Y, and Z axis adjustment
- Entrance guide bushing

OPTIONS & ACCESSORIES

- Multiple planes
- Multiple rolls per plane
- Units can be mounted on uncoilers or exit side of wire drawers
- Stand-alone bench to match a specific wire height
- Power driven feed assembly available for string-up assistance or feed and straightening systems

KS SERIES

Max material diameter:
0.700" (18.0mm)
Number of Rolls: 5 - 11

MODELS

MODEL KS-0811-0X

Maximum Wire Diameter: 0.340" (8.6mm)
 Number of Rolls: 11

MODEL KS-1207-0X

Maximum Wire Diameter: 0.500" (12.7mm)
 Number of Rolls: 7

MODEL KS-1605-0X

Maximum Wire Diameter: 0.700" (18.0mm)
 Number of Rolls: 5

SS SERIES

Max material diameter:
0.250" (6.0mm)
Number of Rolls: 5 - 13

MODELS

MODEL SS-0213-0X

Maximum Wire Diameter: 0.100" (2.4mm)
Number of Rolls: 13

MODEL SS-0407-0X

Maximum Wire Diameter: 0.175" (4.4mm)
Number of Rolls: 7

MODEL SS-0605-0X

Maximum Wire Diameter: 0.250" (6.0mm)
Number of Rolls: 5

MS SERIES

Max material diameter:
0.340" (8.6mm)
Number of Rolls: 5 - 9

MODELS

MODEL MS-0409-0X

Maximum Wire Diameter: 0.175" (4.4mm)
Number of Rolls: 9

MODEL MS-0607-0X

Maximum Wire Diameter: 0.250" (6.0mm)
Number of Rolls: 7

MODEL MS-0805-0X

Maximum Wire Diameter: 0.340" (8.6mm)
Number of Rolls: 5

LS SERIES

Max material diameter:
0.500" (12.7mm)
Number of Rolls: 5 - 13

MODELS

MODEL LS-0413-0X

Maximum Wire Diameter: 0.175" (4.4mm)
Number of Rolls: 13

MODEL LS-0609-0X

Maximum Wire Diameter: 0.250" (6.0mm)
Number of Rolls: 9

MODEL LS-0807-0X

Maximum Wire Diameter: 0.340" (8.6mm)
Number of Rolls: 7

MODEL LS-1205-0X

Maximum Wire Diameter: 0.500" (12.7mm)
Number of Rolls: 5

JS SERIES

Max material diameter:
0.870" (22.0mm)
Number of Rolls: 5 - 9

MODELS

MODEL JS-1209-0X

Maximum Wire Diameter: 0.500" (12.7mm)
Number of Rolls: 9

MODEL JS-1607-0X

Maximum Wire Diameter: 0.700" (18.0mm)
Number of Rolls: 7

MODEL JS-2005-0X

Maximum Wire Diameter: 0.870" (22.0mm)
Number of Rolls: 5

HS SERIES

Max material diameter:
1.300" (33mm)
Number of Rolls: 5

MODELS

MODEL HS-3005-0X

Maximum Wire Diameter: 1.300" (33.0mm)
Number of Rolls: 5

GS SERIES

Max material diameter:
1.750" (44.5mm)
Number of Rolls: 5

MODELS

MODEL GS-4005-0X

Maximum Wire Diameter: 1.750" (44.4mm)
Number of Rolls: 5



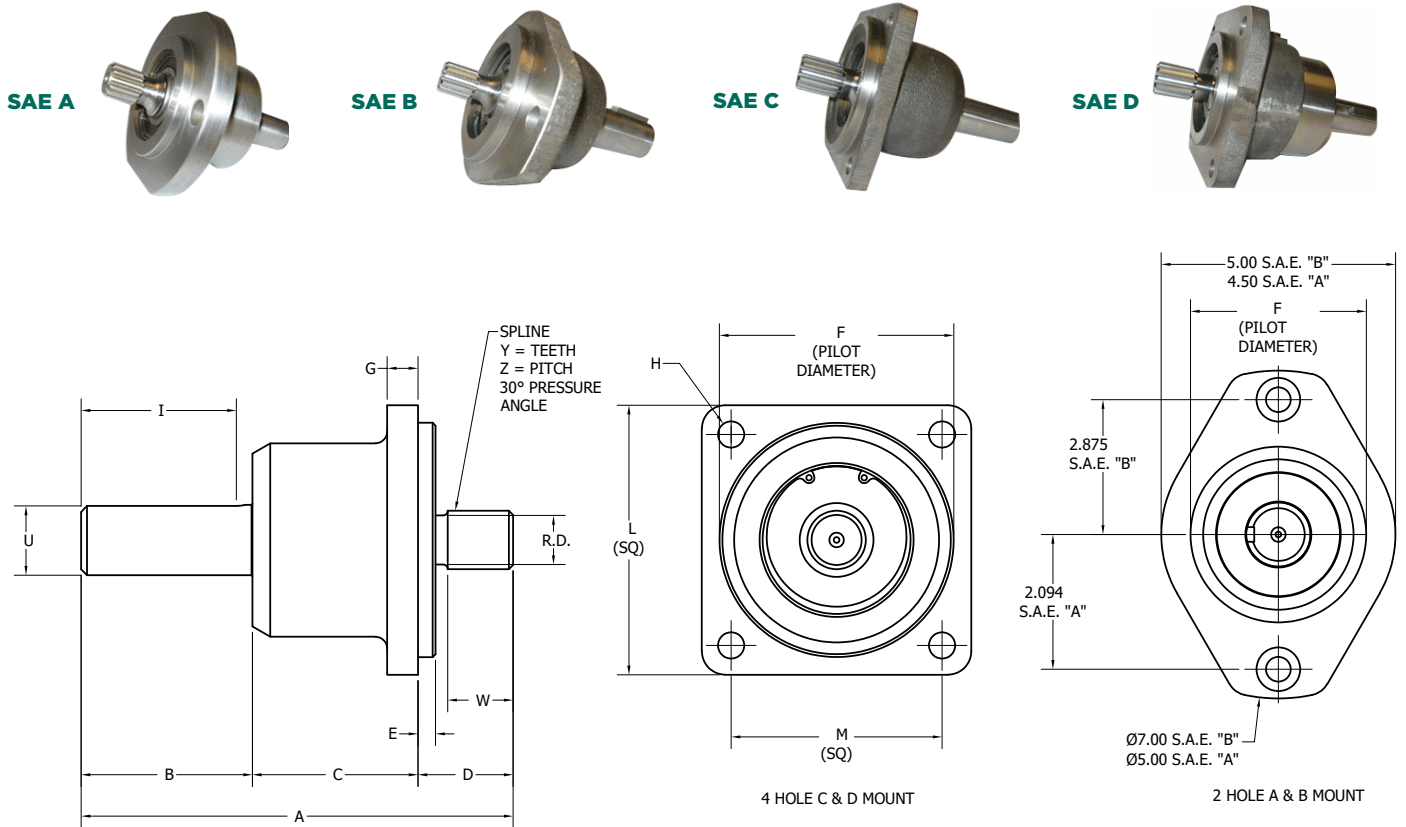
OVERHUNG LOAD ADAPTERS

Overhung Load Adapters are designed to replace a hydraulic motor. A direct, plug-in replacement allows for simple, clean and quiet connection between your power source and gearbox or transmission without the need for hydraulics. Used in both new equipment and conversion kits, the RMG series of overhung load adapters meet all S.A.E. specifications. Originally designed for our own wire processing industry, we now supply overhung load adapters worldwide to multiple industries including, concrete, road construction, agricultural and many more. No matter what your application, we have a solution.



OVERHUNG LOAD ADAPTERS

STANDARD SPECIFICATIONS



	A	B	C	D	E	F	G	H	I
SAE A	5.750"	2.310"	2.260"	1.180"	0.250"	3.250" - 3.248"	0.565"	0.531"	1.870"
SAE B	6.860"	2.950"	2.340"	1.570"	0.310"	4.000" - 3.998"	0.560"	0.530"	2.500"
SAE C	9.220"	3.660"	3.530"	2.030"	0.380"	5.000" - 4.998"	0.656"	0.560"	3.310"
SAE D	13.750"	4.860"	5.910"	2.980"	0.430"	6.000" - 5.998"	1"	0.813"	4.260"

	K - Keyway	L	M	R.D	U	W	Y	Z	Weights (lbs)
SAE A	.125" x .250"	---	---	---	1.125" - 1.124"	0.688"	9	16/32"	5.50
SAE B	.156" x .312"	---	---	0.719"	1.375" - 1.374"	0.819"	13	16/32"	11.50
SAE C	.188" x .375"	5.705"	4.500"	1.045"	1.500" - 1.499"	1.400"	14	12/24"	19.00
SAE D	.250" x .500"	8.500"	6.360"	1.451"	2.000" - 1.999"	1.800"	13	8/16"	52.50

BEARING LOAD RATINGS

	L 10	REVOLUTIONS PER MINUTE					
		500	1,000	1,500	2,000	2,500	3,000
SAE A - Mount	200	1,005	797	697	633	588	553
	500	740	588	513	466	433	407
	1,000	588	466	407	370	344	323
	1,960	469	373	326	296	275	258
	3,000	407	323	282	257	238	224
	4,100	367	291	255	231	215	202
	5,100	341	291	237	215	200	188
SAE B - Mount	200	1,125	893	780	709	658	619
	500	829	658	575	522	485	456
	1,000	658	522	456	414	385	362
	1,960	526	417	365	331	307	289
	3,000	456	362	316	287	267	251
	4,100	411	326	285	259	240	226
	5,100	382	303	265	241	224	210
SAE C - Mount	200	1,638	1,300	1,136	1,032	958	901
	500	1,207	958	837	760	706	664
	1,000	958	760	664	603	560	527
	1,960	765	607	531	482	448	421
	3,000	664	527	460	418	388	365
	4,100	598	475	415	377	350	329
	5,100	556	442	386	351	325	306
SAE D - Mount	200	4,902	3,890	3,399	3,088	2,866	2,697
	500	3,611	2,966	2,504	2,275	2,112	1,987
	1,000	2,866	2,275	1,987	1,806	1,676	1,577
	1,960	2,290	1,818	1,588	1,443	1,339	1,260
	3,000	1,987	1,577	1,378	1,252	1,162	1,094
	4,100	1,791	1,421	1,242	1,128	1,047	986
	5,100	1,665	1,322	1,155	1,049	974	916

NEED AN OVERHUNG
LOAD ADAPTOR
**FOR YOUR
SPECIFIC
PRODUCTION
REQUIREMENTS?**

CUSTOMIZATIONS CAN INCLUDE:

- Sealed Bearings
- DIN Splines
- Spherical Bearings
- Special Shaft Configurations
- Special Shaft Materials

Please note: Most transmission equipment is installed with the axis horizontal. When this equipment is installed with the axis VERTICAL and the input shaft assembly ABOVE the gear reducer or clutch, special provisions must be made for lubrication.

Contact RMG to discuss your needs.

MACHINE SALES & SERVICE

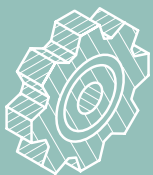
DOWN TO THE WIRE



We have an expert sales and engineering team ready to discuss your wire processing application and help you find the RMG machine that will get the job done. Call us at **815-624-2500** or Email us at machinesales@rmgwire.com to get the conversation started.



We have sales reps worldwide ready to assist you. Use our **rep locator** to find a distributor nearest you. www.rmgwire.com



If you have a machine down and need help immediately, contact your local sales rep. Not sure who to contact? **Call 815-624-2500** and we'll assist any way we can to get your operation up and running. If you want to schedule service, routine maintenance, or training, send us an email info@rmgwire.com.



 **RMG**™ DOWN TO THE WIRE

14343 Industrial Parkway
South Beloit, IL 61080
815-624-2500
www.rmgwire.com

