

SK4.10

MONITORING SYSTEMS for Metal Forming Machines

- Comprehensive process monitoring for tool, machine and quality protection
- Powerful dual core processor with proprietary operating system
- 10.1" capacitive multi-touch with bright LED display
- Up to 8 analog inputs with highly dynamic signal amplification
- 5 digital inputs and outputs
- EasyTouch control with operating mode display
- Ready for IIoT / MES / MDC / PDC
- Interchangeable with SK 200/400/500/800 installation hardware
- Onboard system/sensor diagnostics
- Exclusively designed for the North American Marketplace

Basic features:

- Multi-Cockpit user interface
- 8k envelope monitoring with pattern recognition
- Automatic measurement window
- Dynamic automatic start after machine stop
- Signal stabilization during speed deviations
- Idle stroke detection for thread rollers
- Programmable sorting/stop/alert functions
- Triple-Trend technology (time, stroke, PQI)
- PTO replay
- Job, Tool, & 'Ghost' shift counters

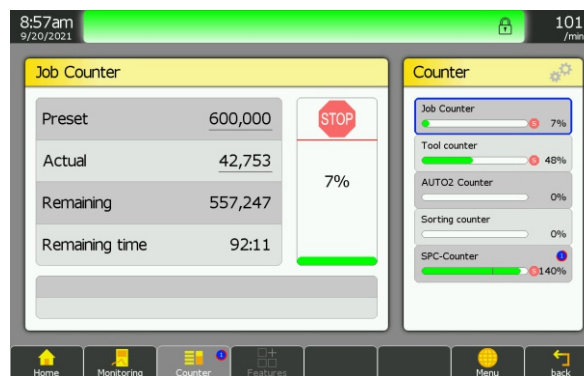


The user-friendly cockpit interface promotes intuitive operation of the SK2.10.

All important information is available here and additional functions are quickly accessed. With simple drag & drop, this display can be individually adapted to the application.

Ready for Industry 4.0

- Integrated protocol for networking with MES-SK-go!®
- Optional OPC-UA data interface
- Prepared for PTO 4.0 process data documentation
- Interface for 1D or 2D barcode scanner



The presentations of the individual functions are arranged with explicit information content on the left and the live links on the right.

These live links provide further topic information at a glance and allow quick navigation to other screens.

Technical Data

- Powerful Dual Core processor
- 10.1" bright LED-Display with 1280 x 800 resolution
- Capacitive Multi-Touch with a sealed glass front
- Up to 8 sensor inputs with 8K sampling
- Integrated highly dynamic signal amplifier with multizoom technology
- 5 digital I/O's
- EasyTouch control panel
- 1x Gigabit-Ethernet, 1x USB, 1x Rs232
- Connection for incremental rotary encoder
- Connection for multi-colored warning light
- EMC-compliant, ergonomic flat housing
- Dimensions: 286W x 217H x 60D (mm)
- Weight: 3,6kg
- Power supply: 24VDC / 20W

Please note that some features listed above are optional even if not specifically mentioned. Technical modifications are possible without prior notice.



The optional PTO Replay feature brings single functions of the Process Tracking Office (PTO) directly to the device. This function allows the operator to analyze process error curves and their progression through a replay function.

Together with the optional PTO xpress, this offers a wide range of of analysis options at the monitoring terminal.