

Certificate of Analysis

Company: Quintessential LLC

PO Box 122

Cabot, VT 05647

Customer ID: 191030-2

Grower License #: CLTV-0098

Sample ID: Sour Sherbet (SS)

Lot: N/A

Matrix: Flower

Date Sampled: N/A

Date Received: 1/27/2023

Report Date: 2/10/2023

Date Analyzed: 2/8/2023

Analyst: 035

Report ID: C230127BP

Terpenes Summary

Terpene	LOQ (mg/g)	Results (mg/g)	Weight (%)
α - Pinene	0.010	0.310	0.031
Camphene	0.010	0.041	0.004
β -Myrcene	0.010	2.544	0.254
b-Pinene	0.010	0.449	0.045
3-Carene	0.010	<LOQ	<LOQ
α -Terpinene	0.010	0.035	0.004
Limonene	0.010	1.734	0.173
p-Cymene	0.010	<LOQ	<LOQ
Ocimene	0.010	<LOQ	<LOQ
Eucalyptol	0.010	0.124	0.012
γ -Terpinene	0.010	0.025	0.003
Terpinolene	0.010	0.960	0.096
Linalool	0.010	0.245	0.025
Isopulegol	0.010	<LOQ	<LOQ
Geraniol	0.010	<LOQ	<LOQ
Caryophyllene	0.010	4.414	0.441
α -Humulene	0.010	1.999	0.200
Trans-Nerolidol	0.010	<LOQ	<LOQ
Cis-Nerolidol	0.010	<LOQ	<LOQ
Guaiol	0.010	<LOQ	<LOQ
Caryophyllene Oxide	0.010	0.036	0.004
α -Bisabolol	0.010	0.235	0.024
Total Terpenes		13.151	1.316

8.63%
Percent Moisture

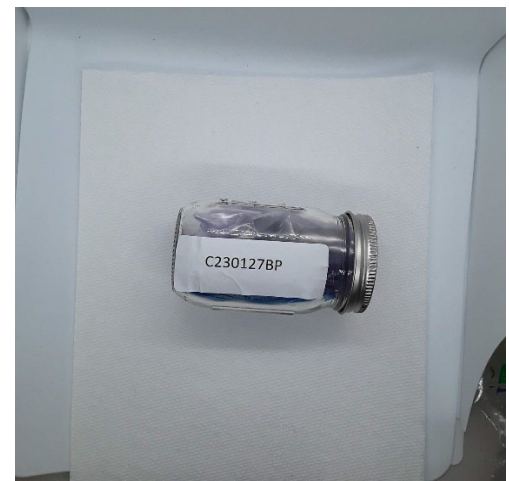
LOQ = The lowest quantity this method can reliably detect. Any terpene that was not detected is assumed to be less than the stated LOQ (<LOQ).

Terpene Methodology: Headspace Sampler, Gas Chromatography-Mass Spectrometry (GC-MS), using Perkin Elmer Clarus® SQ8 GC MS

Reagent Blanks: < LOQs for all analytes

All results reflect dry weight of material, based on % moisture of the sample.

All moisture analysis is determined by loss-on-drying measurement using OHAUS Model MB90 Moisture Content Readers.



This report shall not be reproduced except in full without approval of the laboratory. This is to provide assurance that parts of a report are not taken out of context. Results apply to the samples as received.

Certified by:



Luke Emerson Mason (Laboratory Director, Bia Diagnostics)