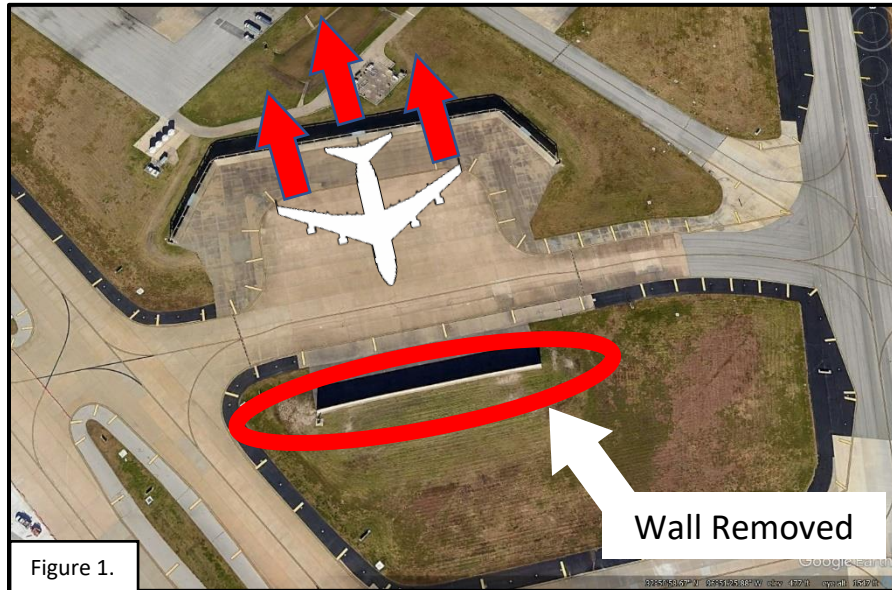


## Engine Maintenance Run-up Area



The engine run-up modification project has been completed; during the construction period, engine run-up activities were still conducted in the run-up area. The location and the City ordinance that governs the activity has NOT been changed to accommodate the construction. The wall that was removed can be seen on figure 1.; the figure also includes the orientation of an aircraft once it enters the area. Aircraft are never positioned with their engines facing the removed wall.

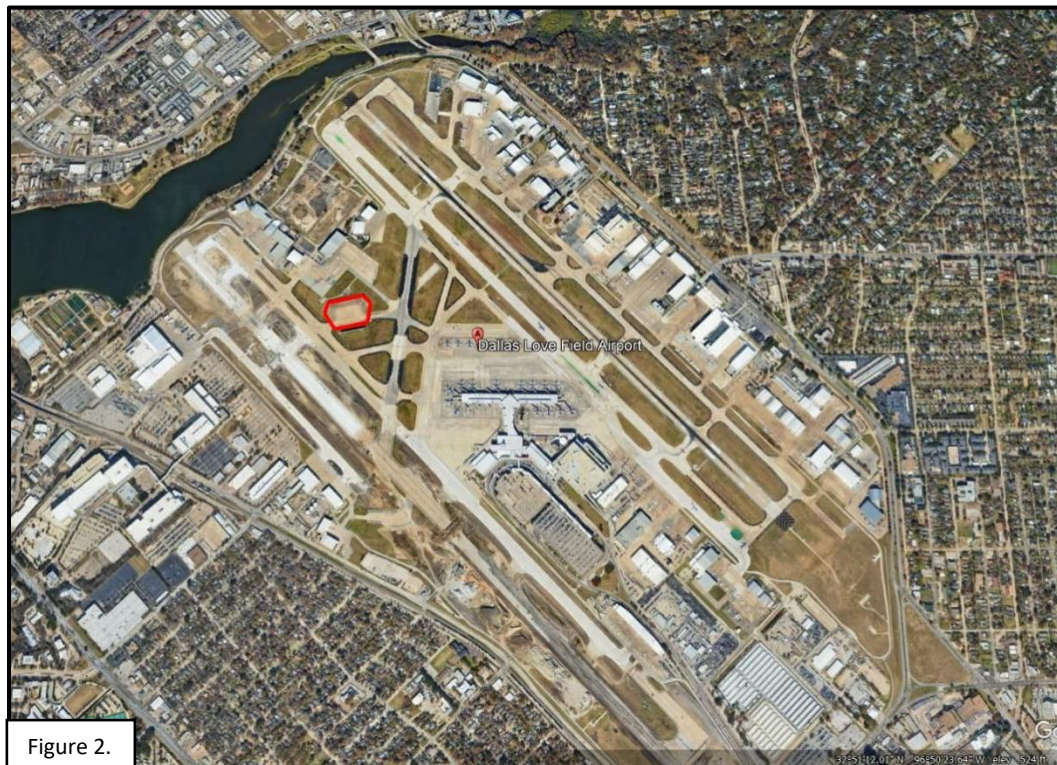


Figure 2. below depicts the location of the run-up area in relation to the airport and surrounding communities.