

OHIO RANCH - PLAN 265

The Ohio

Plan No. 265 • 1352 SQ. FT.

Space for living and relaxing with large master bedroom suite with adjoining bath. Utility area off of the kitchen and expansive formal living room.

Also available in 27'6" width.

Ohio - Plan 265

Size: 26'0" x 52'0"

Sq Ft: 1352

Bedrooms: 3

Bathrooms: 2



\$171,800

Price Includes Delivery & Set On Your

Foundation with Siding & Roof Finished.

Your contractors finish Plumbing, Electrical & Carpentry.

(Extended Roof and Dormers are an Extra Cost)

SCRANTON RANCH - PLAN 389

The Scranton

Plan No. 389 • 1650 SQ. Ft.

A home for the large family with master bedroom with full bath, three additional bedrooms, full bath convenient utility area, large kitchen with L bar.

Scranton - Plan 389

Size: 27'6" x 60'0"

Sq Ft: 1650

Bedrooms: 4

Bathrooms: 2



\$181,950

Price Includes Delivery & Set On Your

Foundation with Siding & Roof Finished.

Your contractors finish Plumbing, Electrical & Carpentry.

(Extended Roof and Dormers are an Extra Cost)

SCOTTSDALE RANCH - PLAN 388



Scottsdale - Plan 388

Size: 27'6" x 56'0"

Sq Ft: 1540

Bedrooms: 3

Bathrooms: 2

The Scottsdale

Plan No. 388 • 1540 SQ. FT.

Enjoy exceptional living with grand master bedroom suite with generous walk-in closet and luxurious, private bath; spacious, formal living room, and large kitchen with breakfast/snack bar.



\$180,100

Price Includes Delivery & Set On Your

Foundation with Siding & Roof Finished.

Your contractors finish Plumbing, Electrical & Carpentry.

(Extended Roof and Dormers are an Extra Cost)

CRANSTON RANCH - PLAN 118



Cranston - Plan 118

Size: 23'8" x 48'

Sq Ft: 1136

Bedrooms: 3

The Cranston

Plan No. 118 • 1136 SQ. FT.

A unique floor plan offers space and privacy. Master bedroom suite with private bath is nestled away from two additional bedrooms and full bath. Also available in 26' width.



\$165,000

Price Includes Delivery & Set On Your

Foundation with Siding & Roof Finished.

Your contractors finish Plumbing, Electrical & Carpentry.

(Extended Roof and Dormers are an Extra Cost)

MILLVILLE RAISED RANCH - PLAN 225

Millville - Plan 225

Size: 26'0" x 44'0"

Sq Ft: 1144

Bedrooms: 3

Bathrooms: 2

The Millville

Plan No. 225 • 1248 SQ.FT.

Comfort and convenience are yours with master bedroom suite with his and her closets and private bath, two additional bedrooms, large bath, utility closet, kitchen with snack bar, and dining area. Also available in 27'6" width.



\$168,995

Price Includes Delivery & Set On Your

Foundation with Siding & Roof Finished.

Your contractors finish Plumbing, Electrical & Carpentry.

(Extended Roof and Dormers are an Extra Cost)

WHITNEY RAISED RANCH - PLAN 333

The Whitney

Plan No. 333 • 1705 SQ. FT.

Stunning family room is hallmark of this creative home that also features a large kitchen with walk-in pantry closet.

Spacious master suite with lavish private bath, plus two additional bedrooms and full bath.

Whitney - Plan 333

Size: 27'6" x 62'0"

Sq Ft: 1705

Bedrooms: 3

Bathrooms: 2



\$184,495

Price Includes Delivery & Set On Your

Foundation with Siding & Roof Finished.

Your contractors finish Plumbing, Electrical & Carpentry.

(Extended Roof and Dormers are an Extra Cost)

CAPE BRISTOL - PLAN 344



Cape Bristol - Plan 344

Size: 27'6" x 44'0"

Sq Ft: 1210

Bedrooms: 2

Bathrooms: 2

CAPE BRISTOL

Plan No. 344 • 1210 SQ. FT.

Relax in privacy and space with master bedroom suite featuring full bath and walk-in closet, additional bedroom, full bath and comfortable kitchen.



\$190,550

Price Includes Delivery & Set On Your

Foundation with Siding & Roof Finished.

Your contractors finish Plumbing, Electrical & Carpentry.

(Extended Roof and Dormers are an Extra Cost)

CAPE AUBURN - PLAN 107



Cape Auburn - Plan 107

Size: 23'8" x 44'0"

Sq Ft: 1041

Bedrooms: 2

Bathrooms: 2

Cape Auburn

Plan No. 107 • 1041 SQ. FT.

Distinctive living with immense living room opening into a formal dining room and expansive kitchen with island. Two spacious bedrooms with ample closet space and two full baths.

Also available in 26' width.



\$179,900

Price Includes Delivery & Set On Your

Foundation with Siding & Roof Finished.

Your contractors finish Plumbing, Electrical & Carpentry.

(Extended Roof and Dormers are an Extra Cost)

THE BRIDGEPORT TWO STORY - PLAN 504

Bridgeport - Plan 504

Size: 26'0" x 38'0"

Sq Ft: 1976

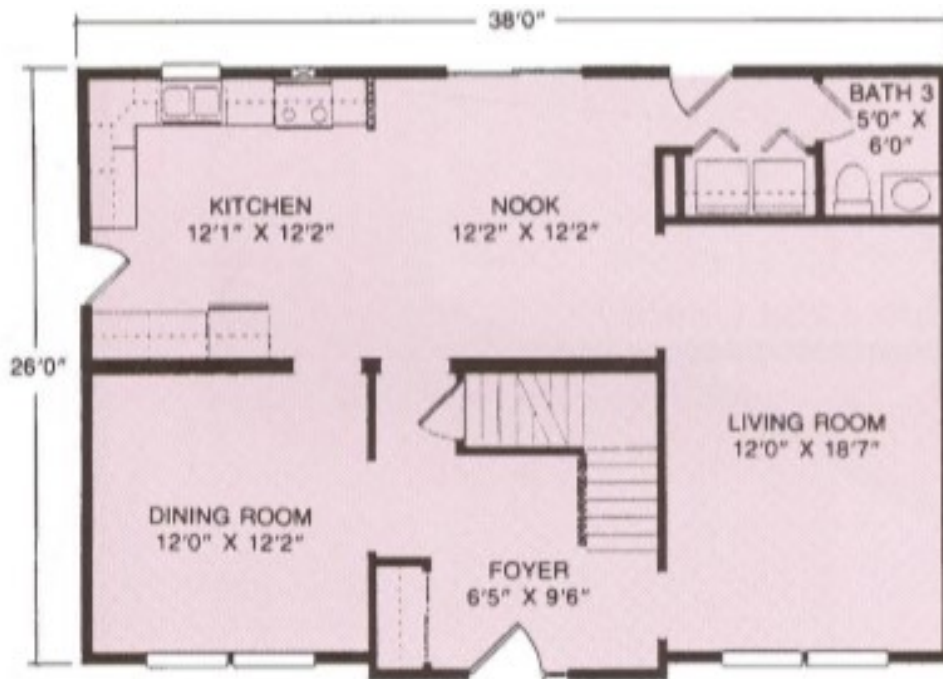
Bedrooms: 4

Bathrooms: 2.5

Price Includes Delivery & Set On Your

Foundation with Siding & Roof Finished.

Your contractors finish Plumbing, Electrical & Carpentry.



\$265,350



(Extended Roof and Dormers are an Extra Cost)

THE OXFORD TWO STORY - PLAN 515

Oxford - Plan 515

Size: 27'6" x 48'0"

Sq Ft: 2640

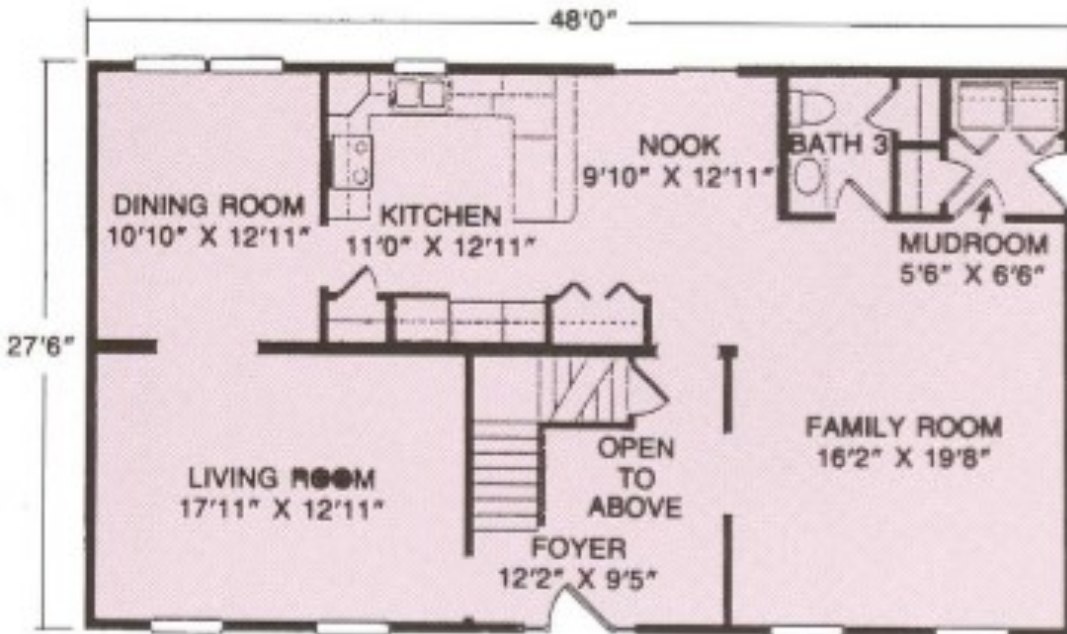
Bedrooms: 4

Bathrooms: 2.5

Price Includes Delivery & Set On Your

Foundation with Siding & Roof Finished.

Your contractors finish Plumbing, Electrical & Carpentry.



\$262,500



(Extended Roof and Dormers are an Extra Cost)

SUSQUEHANNA RANCH - PLAN 268

The Susquehanna

Plan No. 268 • 1560 SQ. FT.

Spacious family living features grand master bedroom suite with walk-in closet and luxurious bath, spacious family room makes this home perfect for the family who enjoys additional space. Also available in 27'6" width.

Bathrooms: 2

Bedrooms: 3

Size: 26'0" x 60'0"

Sq Ft: 1560



\$196,200

Price Includes Delivery & Set On Your

Foundation with Siding & Roof Finished.

Your contractors finish Plumbing, Electrical & Carpentry.

(Extended Roof and Dormers are an Extra Cost)

READING RANCH - PLAN 387

Bathrooms: 2

Bedrooms: 3

Size: 27'6" x 52'0"

Sq Ft: 1430

The Reading

Plan No. 387 = 1430 SQ. FT.
Family-style living with master bedroom with adjoining full bath and his and her closets, two additional bedrooms, full bath, large family room, and kitchen with breakfast/snack bar.



\$189,950

Price Includes Delivery & Set On Your

Foundation with Siding & Roof Finished.

Your contractors finish Plumbing, Electrical & Carpentry.

(Extended Roof and Dormers are an Extra Cost)

DELAWARE RANCH - PLAN 296

The Delaware

Plan No. 263 ■ 1248 SQ. FT.

Relax in style in this home featuring master bedroom with private bath, convenient first floor utility room and spacious kitchen. Also available in 27'6" width.

Bathrooms: 2

Bedrooms: 3

Size: 26'0" x 48'0"

Sq Ft: 1248



\$188,450

Price Includes Delivery & Set On Your

Foundation with Siding & Roof Finished.

Your contractors finish Plumbing, Electrical & Carpentry.

(Extended Roof and Dormers are an Extra Cost)

SCHUYLKILL RANCH - PLAN 266

The Schuylkill

Plan No. 266 • 1352 SQ. FT.

Comfortable, easy living with spacious kitchen and adjoining utility room, master bedroom suite with private bath, plus two bedrooms and additional bath. Also available in 27'6" width.

Bathrooms: 2

Bedrooms: 3

Size: 26'0" x 52'0"

Sq Ft: 1352



\$189,600

Price Includes Delivery & Set On Your

Foundation with Siding & Roof Finished.

Your contractors finish Plumbing, Electrical & Carpentry.

(Extended Roof and Dormers are an Extra Cost)

GREENSBURG RANCH - PLAN 385

The Greensburg

Plan No. 385 • 1320 SQ. FT.

Spacious and welcoming, featuring kitchen with breakfast/snack bar and convenient utility closet, master bedroom with full bath.

Bathrooms: 2

Bedrooms: 3

Size: 27'6" x 48'0"

Sq Ft: 1320



\$191,200

Price Includes Delivery & Set On Your

Foundation with Siding & Roof Finished.

Your contractors finish Plumbing, Electrical & Carpentry.

(Extended Roof and Dormers are an Extra Cost)