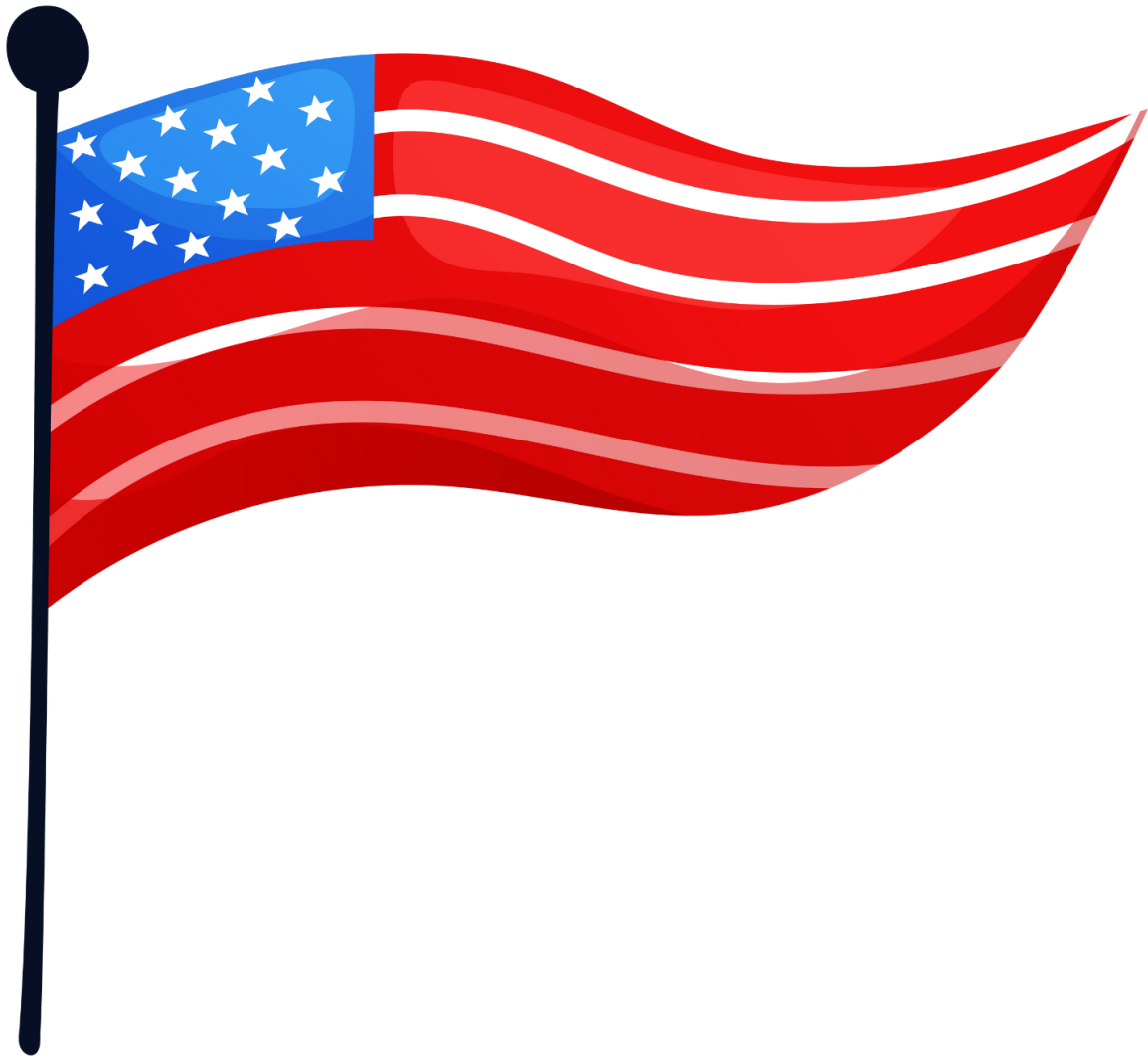


**Can You Answer All 5 of
these Trivia Questions?**



U.S. History - Pack #3

INSTRUCTIONS

Use the chart below to help answer the question:

1-A 2-B 3-C 4-D 5-E 6-F 7-G 8-H 9-I 10-J
11-K 12-L 13-M 14-N 15-O 16-P 17-Q 18-R 19-S
20-T 21-U 22-V 23-W 24-X 25-Y 26-Z

Example: Write a U above all spaces that have
a 21 below them and an N above all spaces
with a 14 below.



U N I T E D S T A T E S H I S T O R Y
21 14 9 20 5 4 19 20 1 20 5 19 8 9 19 20 15 18 25

Use the chart below to help answer the question:

1-A 2-B 3-C 4-D 5-E 6-F 7-G 8-H 9-I 10-J
11-K 12-L 13-M 14-N 15-O 16-P 17-Q 18-R 19-S
20-T 21-U 22-V 23-W 24-X 25-Y 26-Z

HERE'S THE QUESTION:

**SHE IS CONSIDERED THE WORLD'S FOREMOST
EXPERT ON CHIMPANZEES, STUDYING THEIR
SOCIAL AND FAMILY INTERACTIONS FOR OVER
60 YEARS. WHO IS SHE?**

10 1 14 5 7 15 15 4 1 12 12



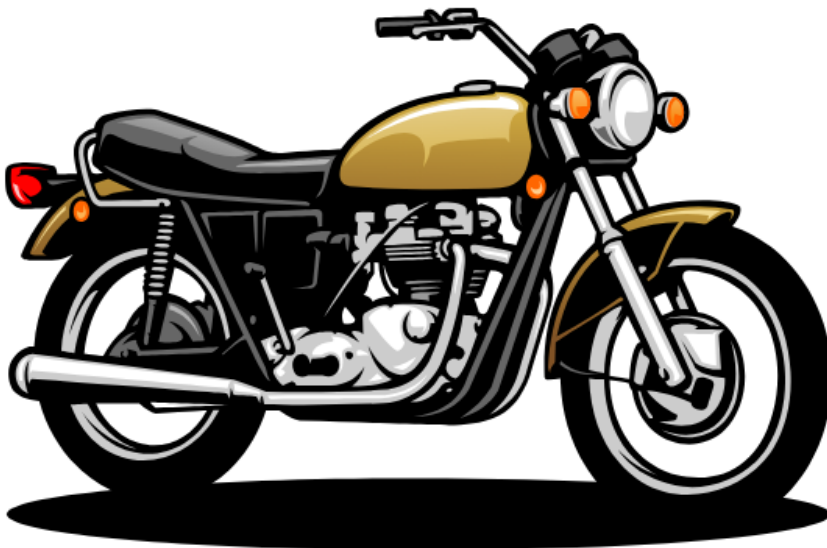
Use the chart below to help answer the question:

1-A 2-B 3-C 4-D 5-E 6-F 7-G 8-H 9-I 10-J
11-K 12-L 13-M 14-N 15-O 16-P 17-Q 18-R 19-S
20-T 21-U 22-V 23-W 24-X 25-Y 26-Z

HERE'S THE QUESTION:

THIS SITCOM WHICH BEGAN IN 1974 INCLUDED THE FOLLOWING CHARACTERS AMONG OTHERS: RICHIE CUNNINGHAM, FONZIE, POTSIE AND JOANIE. WHAT WAS IT CALLED?

8 1 16 16 25 4 1 25 19



Use the chart below to help answer the question:

1-A 2-B 3-C 4-D 5-E 6-F 7-G 8-H 9-I 10-J
11-K 12-L 13-M 14-N 15-O 16-P 17-Q 18-R 19-S
20-T 21-U 22-V 23-W 24-X 25-Y 26-Z

HERE'S THE QUESTION:

**ON DECEMBER 16TH, 1773, 342 CHESTS OF
TEA BELONGING TO A BRITISH COMPANY
WERE THROWN INTO A HARBOR IN PROTEST
OF AN UNFAIR TAX. WHAT DID THAT EVENT
BECOME KNOWN AS?**

20 8 5 2 15 19 20 15 14 20 5 1 16 1 18 20 25



Use the chart below to help answer the question:

1-A 2-B 3-C 4-D 5-E 6-F 7-G 8-H 9-I 10-J
11-K 12-L 13-M 14-N 15-O 16-P 17-Q 18-R 19-S
20-T 21-U 22-V 23-W 24-X 25-Y 26-Z

HERE'S THE QUESTION:

**THIS ELECTRONIC DEVICE FIRST DEBUTED IN
SAN FRANCISCO ON SEPT. 7TH, 1927. MOST OF
US SPEND HOURS INTERACTING WITH IT EVERY
DAY. WHAT IS IT?**

— — — — —
20 8 5 20 5 12 5 22 9 19 9 15 14 .



Use the chart below to help answer the question:

1-A 2-B 3-C 4-D 5-E 6-F 7-G 8-H 9-I 10-J
11-K 12-L 13-M 14-N 15-O 16-P 17-Q 18-R 19-S
20-T 21-U 22-V 23-W 24-X 25-Y 26-Z

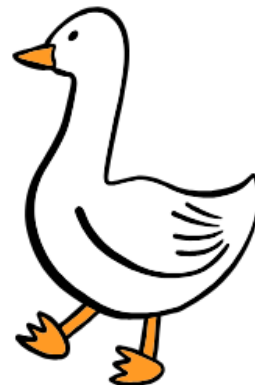
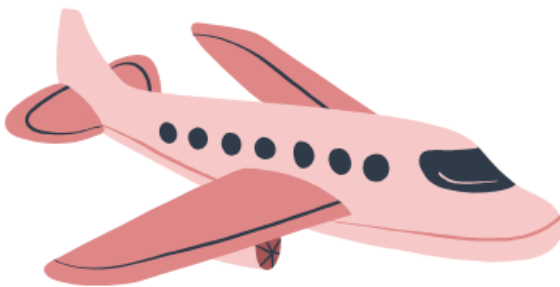
HERE'S THE QUESTION:

THIS AIRPLANE, DESIGNED BY HOWARD HUGHES WAS THE LARGEST WOODEN PLANE EVER CREATED. IT WAS MADE TO TRANSPORT LARGE NUMBERS OF SOLDIERS BUT ONLY FLEW ONE TIME ON NOVEMBER 2ND, 1947. WHAT WAS ITS NAME?

20 8 5

19 16 18 21 3 5

7 15 15 19 5



If you enjoyed this Trivia Question Activity Pack, PLEASE pass it on to others!



If you are looking for lots of other Free Senior Activities, please visit our website today. Here's where they can be found:

<https://kidzrockuniversity.com/senior-activities>

Have an AWESOME Day!

Max Reid

Kidz Rock University