

VIVA GOLD CORP

TSX-V: VAU

Nevada's Newest Gold Exploration and Development Company!

Investment Highlights

Nevada focused gold exploration & development company

- **Strong Management Team and Board**
- **100% Owned Tonopah Gold Project on Walker Lane Trend**
- **> 1.0 million ounce deposit size target**
- **NI43-101 Resource Study complete**
- **Politically Stable Jurisdiction with known permitting history**
- **Tight Capital Structure – 17.6 million shares outstanding**
- **28 hole, 3,000 meter RC drill program currently underway**
- ***Undervalued by every metric!***

Capital Structure

Capital Structure (at April 30, 2018 except where otherwise noted)

Shares Outstanding*	17.6 million
Share Options **	1.0 million
Warrants Outstanding ***	3.1 million
Fully Diluted	21.7 million
Market Cap (based on TSXV price of C\$	C\$5.0 million

* 1.7 million shares escrowed, releasable in tranches through November 8, 2020

** \$0.50 Strike, three year term

*** \$0.35 exercise price, expire Nov. 2019



Executive Management and Directors

- **Mr. Christopher E. Herald – Chairman, Director**

President, CEO and Director of Solitario Zinc Corp. He was formerly President, CEO and Director of Crown Resources Corporation from 1990 until acquired by Kinross Gold Corp. in 2006 and has held senior geologic positions with Echo Bay Mines and Anaconda Minerals. Mr. Herald was also past chairman of Denver Gold Group, and holds a M.S. in Geology from the Colorado School of Mines and a B.S. in Geology from the University of Notre Dame.

- **Mr. James Hesketh – President, CEO and Director**

Over 35 years of experience in mining company positions, including over 12 years in CEO positions, with public and private companies including Atna Resources Ltd., Canyon Resources Corporation, NM Rothschild & Sons (Denver) Inc., Cyprus Amax Minerals Company, Pincock, Allen & Holt, Inc., and Dresser Industries Inc. B.S. in Mining Engineering and a M.S. in Mineral Economics, Colorado School of Mines.

- **Mr. Steven Krause – CFO**

Steven has worked extensively with mining, mineral exploration and development stage companies in Canada and the United States. Mr. Krause is also the CFO of Bear Creek Mining Corporation and President of Avisar Chartered Accountants. He holds a Bachelor of Business Administration from Trinity Western University and is a registered CPA in the state of Illinois.

- **Mr. Gary B. MacDonald – Director**

Business Consultant with over 25 years' experience in the mining industry both private and public and a successful track record with corporate restructuring, and mergers and acquisitions.

- **Mr. Brad Blacketor – Director**

Mr. Blacketor was previously CFO of Luna Gold Corp, Midway Gold Corp, Gold Resource Corporation, Bear Creek Mining Corporation and Metallica Resources Inc.; and he served on the board of directors as audit committee chairman for Kaminak Gold Corporation and Grayd Resource Corporation. Mr. Blacketor holds a B.S. in Business Administration with distinction from Indiana University as well as an MBA from Colorado State University. He is a registered CPA in the state of Colorado.

Why Invest In Viva?

New Company that is undervalued by every metric!

Viva Gold Corp Peer Comparison

Company	Project	Location	Stage	Market Cap	EV	Attributable Resource (Au)			EV/M+I+I
						Grade	M+I	M+I+I	
				C\$M	C\$M	(g/t)	(M Oz)	(M Oz)	(\$C/Oz)
West Kirkland Mining	Hasbrouk	Nevada	PFS Complete	22.1	20.8	0.5	0.9	1.7	12.1
Allegiant Gold	Eastside	Nevada	Resource Estimate	22.2	18.2	0.6	-	0.7	27.8
Corvus Gold	N Bullfrog/Mother Load	Nevada	PEA Complete	255.4	249.1	0.7	0.9	2.1	119.9
Bullfrog Gold	Bullfrog	Nevada	Resource Estimate	12.3	11.9	1.0	0.5	1.2	10.3
Rye Patch Gold	Florida Canyon	Nevada	Production	81.7	69.8	0.4	2.8	6.7	10.4
Nu Legacy Gold Corp	Red Hills	Nevada	Pre-Resource	57.3	48.5	n/a	n/a	n/a	n/a
VR Resources	Bonita	Nevada	Pre-Resource	11.7	10.3	n/a	n/a	n/a	n/a
NV Gold	ATV	Nevada	Pre-Resource	23.6	22.3	n/a	n/a	n/a	n/a
Liberty Gold	Kinsley	Nevada	Resource Estimate	62.0	59.8	2.3	0.4	0.9	64.2
Northern Vertex	Moss Mine	Arizona	Production	82.2	60.0	0.8	0.4	0.4	198.0
Fiore Gold	Pan Mine/Gold Rock	Nevada	Production	64.3	57.5	0.6	0.7	1.1	50.2
Northern Empire	Sterling	Nevada	Resource Estimate	95.7	91.1	1.8	-	1.0	92.5
Pershing Gold Corp	Relief Canyon	Nevada	PFS Complete	81.8	69.0	0.7	0.8	0.8	82.8
Mean				67.1	60.6	0.9	0.7	1.7	66.8
Median				62.0	57.5	0.7	0.6	1.1	57.2
Viva Gold Corp	Tonopah	Nevada	Resource Estimate	4.1	3.6	1.0	0.2	0.4	8.5

Source:

SEDAR/EDGAR, Public Filings and Websites

Date:

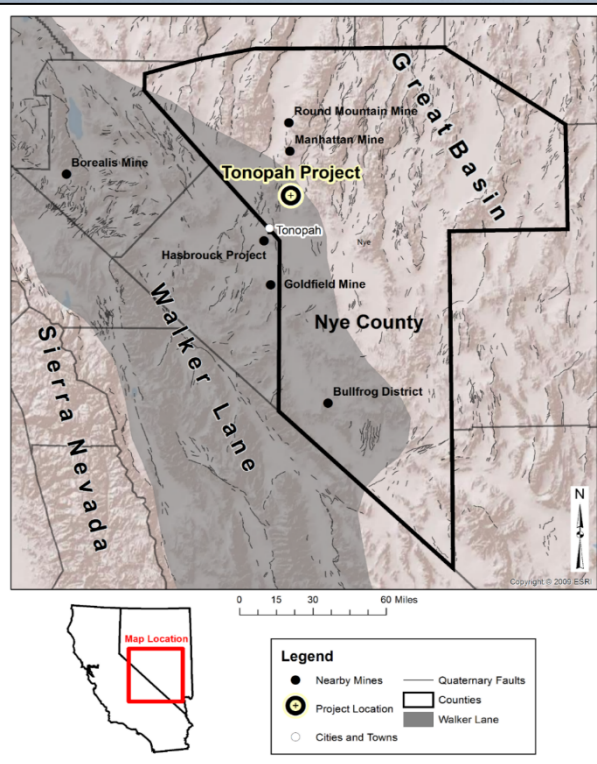
9-Apr-18

EV = Enterprise Value (Market Cap less cash)

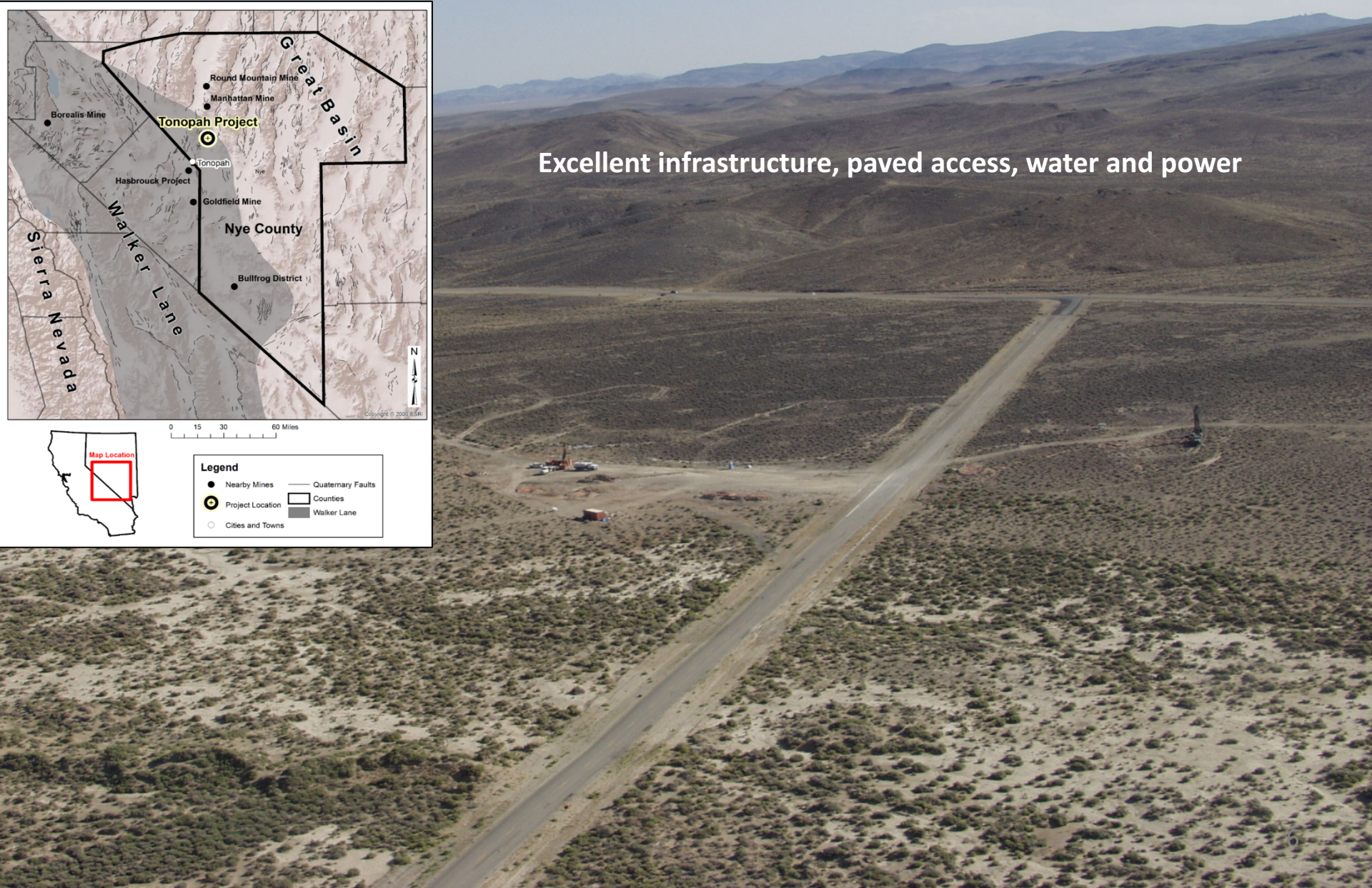
M+I = Measured and Indicated

M+I+I = Measured + Indicated + Inferred

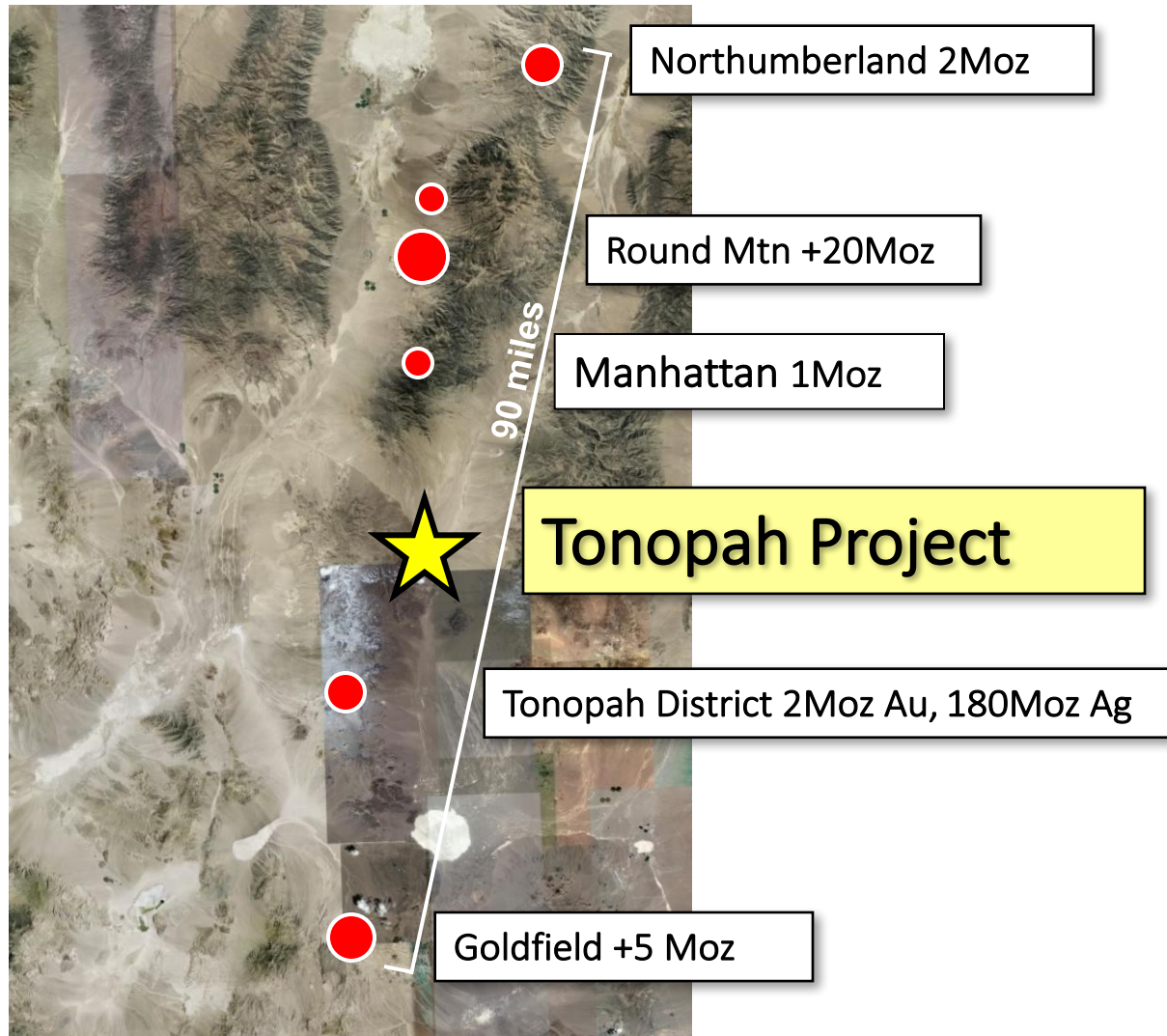
Tonopah Property, Nye County Nevada



Excellent infrastructure, paved access, water and power



Round Mountain-Goldfield Trend



Tonopah Project Summary

- Epithermal gold system with structurally controlled high-grade “bonanza” style vein/breccia related mineralization within an extensive zone of disseminated and contact related mineralization.
- Measured and Indicated in-pit mineral resource estimate containing 186,000 ounces at an average grade of 0.95 grams per tonne (“g/t”) with an additional inferred resource containing 238,000 ounces at 0.77 g/t
- Open for extension with both infill and step-out drilling
- >1.0 million contained gold ounce goal
- Amenable to leach and gravity gold recovery methods
- Excellent Infrastructure
- Approve Plan of Operations allowing up to 75 acres of disturbance by drilling
- Royalty structure re-negotiated to a flat 2% NSR rate structure with option to acquire 1% NSR for \$1.0 million

2018 Resource Estimate

In-Pit Constrained Mineral Resource ^(1,2,3)

Classification	Tonnes (x1000)	Au Grade grams/tonnes	Contained Ounces
Measured	1,500	1.15	56,000
Indicated	5,200	0.78	130,000
Measured and Indicated	6,700	0.95	186,000
Inferred	9,600	0.77	238,000

Basis of estimate:

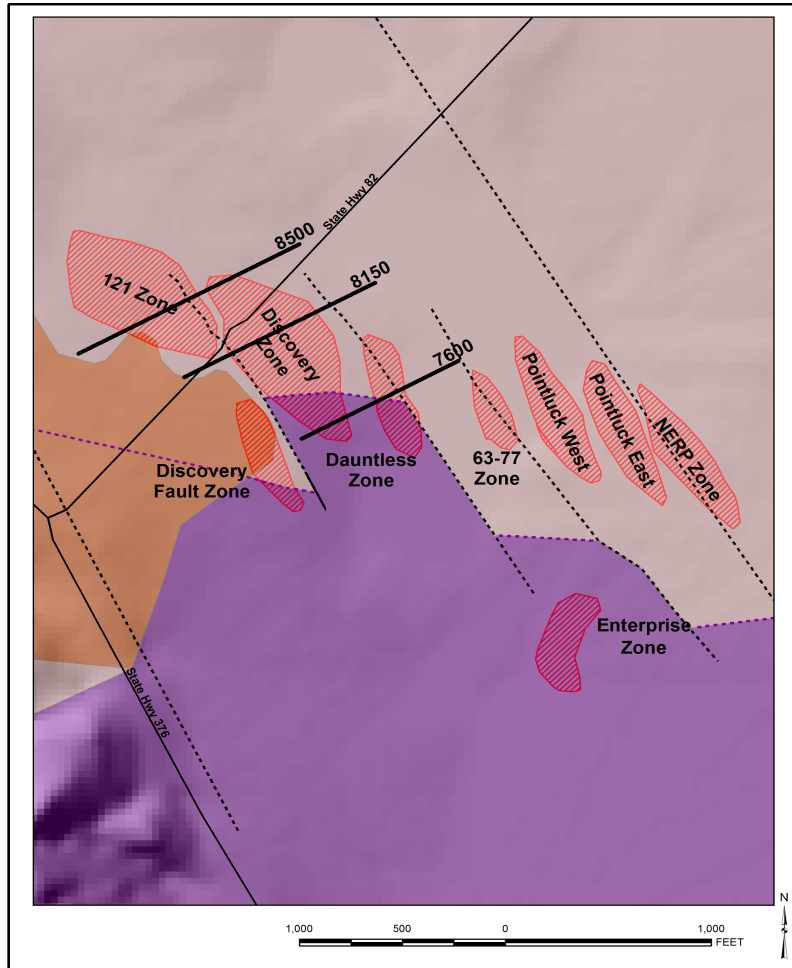
- \$1,250 Gold price, 0.25gpt cutoff grade
- 42 degree average pit slope angle
- Initial recovery and process cost estimates

- (1) Reported on March 1, 2018. Prepared by Gustavson Associates of Lakewood, Colorado. Effective Date January 31, 2018
- (2) Thomas C. Matthews, MMSA-QP, Principal Resource Geologist for Gustavson Associates, is the Qualified Person responsible for this Mineral Resource Estimate for the Tonopah Project
- (3) Resources are not reserves and do not have demonstrated economic viability



Geology

Mineralized Zones



- Low Sulfidation Epithermal Gold System
- Near Surface – typically < 150 meters
- Vertical quartz-adularia-gold veins in Palmetto Formation Argillite and overlaying Tertiary rhyolitic volcanics
- All within a low angle zone of gold mineralization which parallels discontinuity at top of Palmetto
- Mineralized trend along Walker Lane trend
- 2,000 meters long x 300 meters wide
- Zone defined by structural junctions along fault systems
- Open extension along and lateral to trend

Drill Hole Database

Company	Year	RC		Core		Total Drill Holes	Total
		No.	Meters	No.	Meters	No.	Meters
Felmont	1981	92	9,214			92	9,214
Coeur d'Alene	1988	3	328			3	328
Rio Algom	1989	41	6,026			41	6,026
Kennecott	1992-1996	133	20,485	4	553	137	21,035
Bob Warren	1994	3	361			3	361
Golconda	1996 - 1997	9	515			9	515
Tombstone	1997	14	1,980			14	1,980
Midway Gold	2002	20	3,304	49	4,832	69	8,136
Newmont Gold	2002 - 2004	84	12,692	38	8,022	122	20,714
Midway Gold	2005 -2011	77	11,919	70	7878	147	19,797
Viva Gold	2018			4	574	4	574
Total		476	71,020	161	22,884	641	93,903

High Grade Gold Intercepts

Discovery Zone High Grade Intercepts – 2011 drill program

- 0.4 meters of 334.9 grams per tonne (gpt) gold and 1.5 meters of 78.41 gpt gold within a zone of 45.9 meters of 7.68 gpt gold in drill hole MW11-09c
- 0.5 meters of 88 gpt gold within a zone of 47.9 meters of 2.02 gpt gold in MW11-05c
- 2.7 meters of 17.5 gpt gold within a zone of 21.6 meters of 4.83 gpt gold in MW11-07c

In addition, the drilling also encountered longer intercepts of:

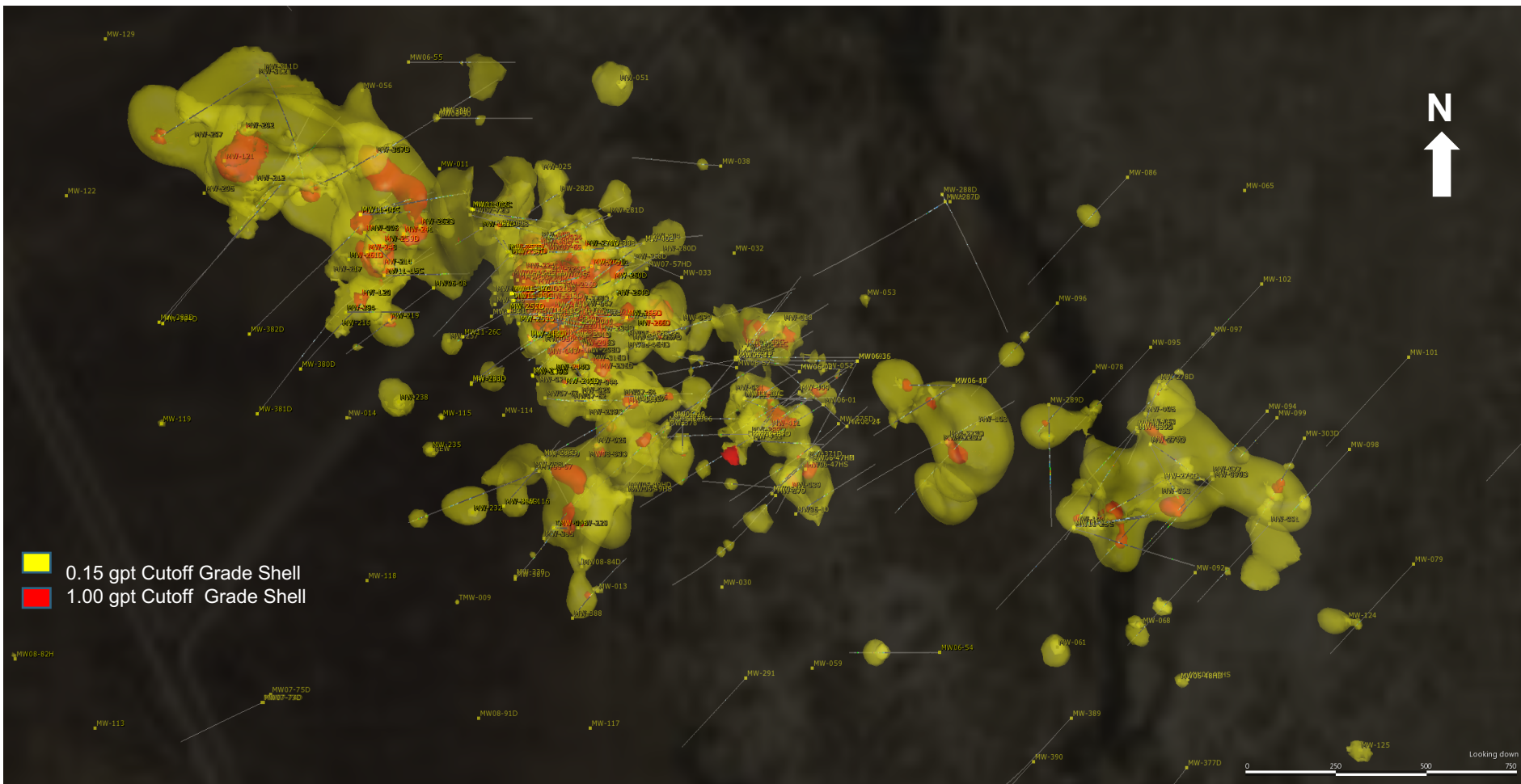
- 46.6 meters of 2.67 gpt gold in MW11-08c
- 30.5 meters of 2.09 gpt gold in MW11-11c
- 52.4 meters of 1.99 gpt gold in MW11-04c
- 44.5 meters of 1.13 gpt gold in MW11-06c

Source: Midway Gold December 2011 Press Release



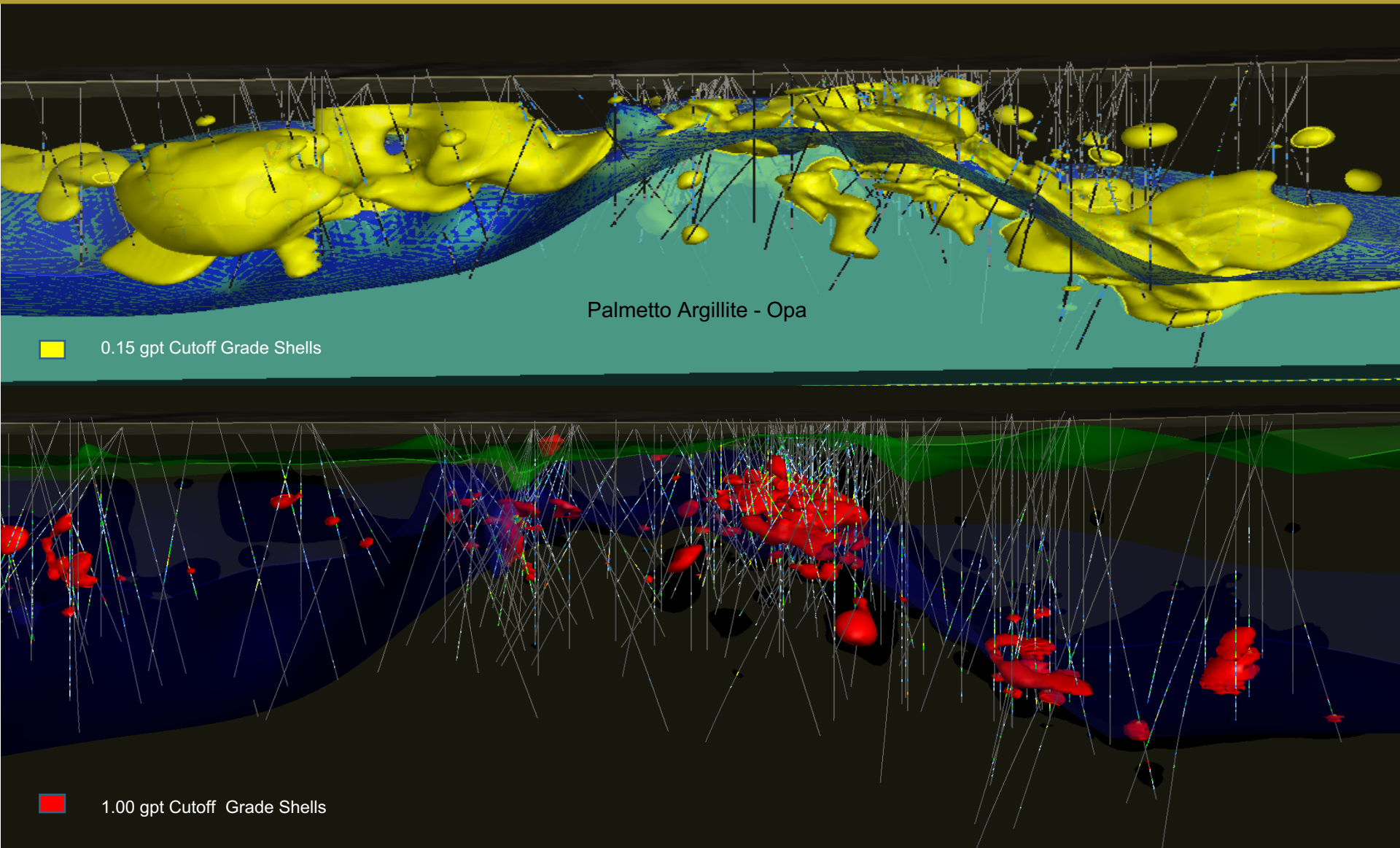
Discovery Zone Outcrop

Plan View Of Mineralization

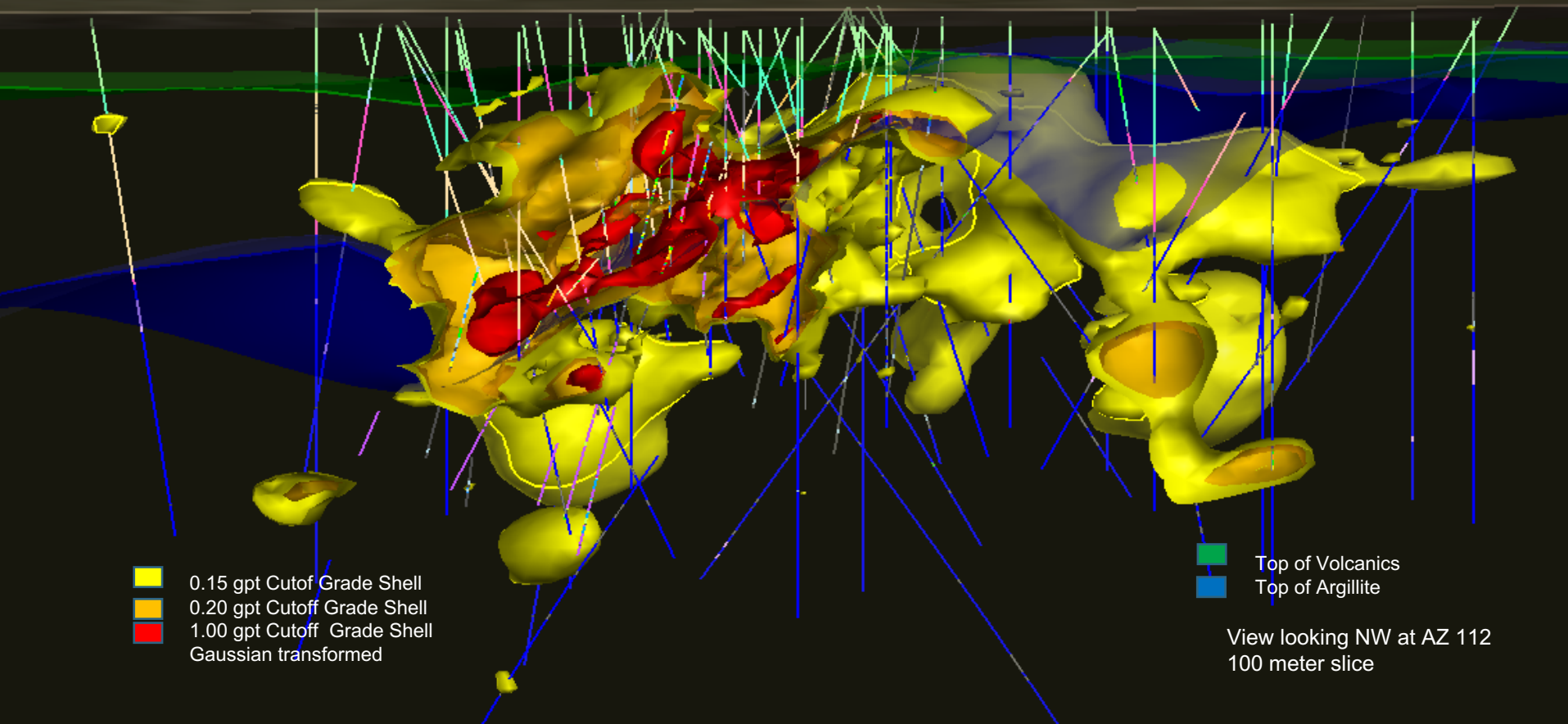


Plan View - grade shells ~ 1,100 x 250 meter mineralized corridor with ability to expand through in-fill/step-out drilling

Long Section, All Zones

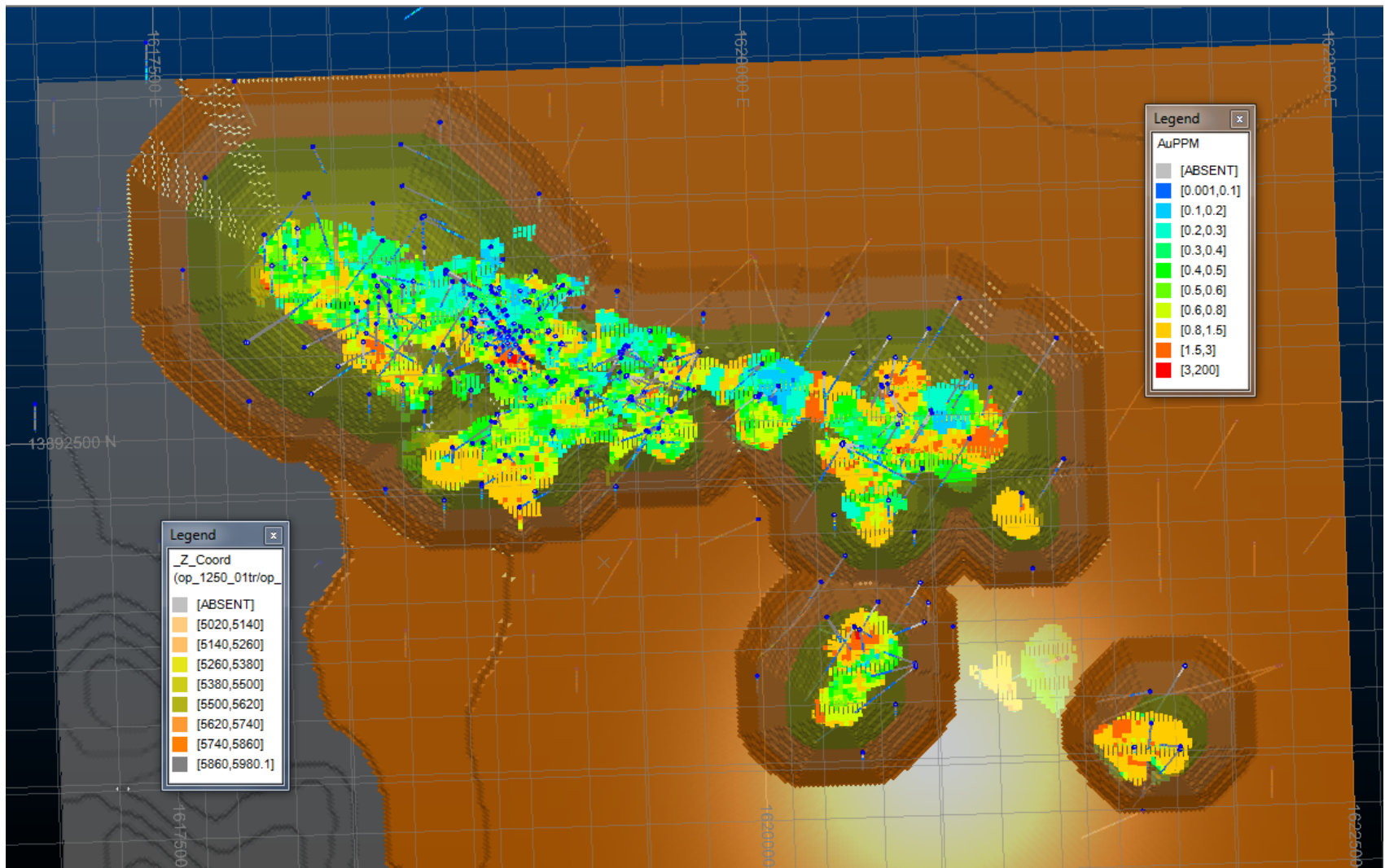


Grade Shell X-Section, Discovery Zone



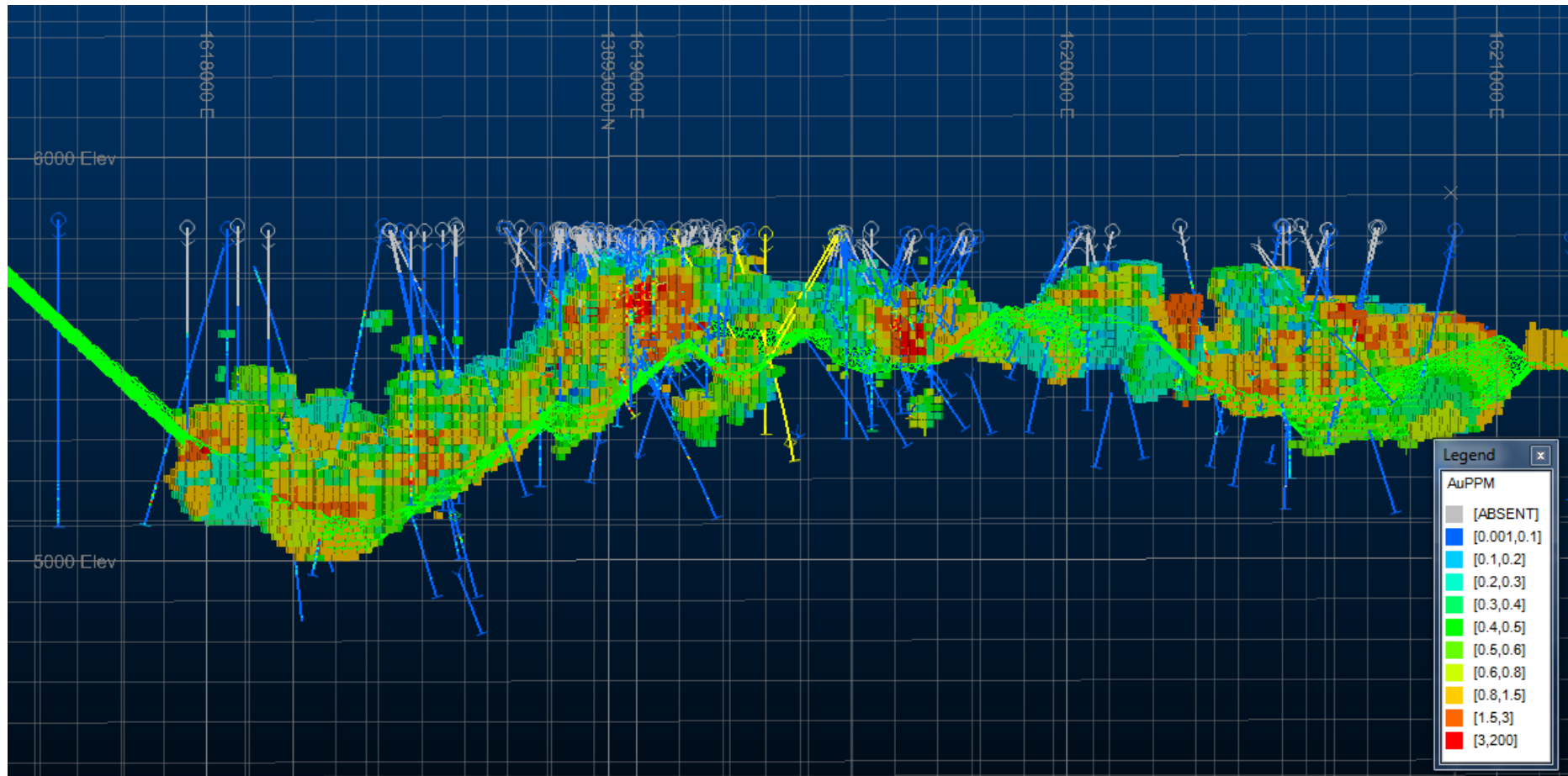
Core of mineralization drilled to a high confidence level

Plan View – Block Model and Pit Shell



\$1,250 Au Pit, 42 degree slopes

Block Model – Long Section



- Long section showing pit shell
- Includes Measured, Indicated and Inferred Blocks

Metallurgy

- Historic test work shows amenability to gold recovery through gravity, flotation and cyanidation leach methods.
- Initial leach recovery characterization work completed by Viva
 - Results indicate mineralization is amenable to cyanide recovery methods, but will require fine crush/grind.
 - Gold leach recoveries ranging from 50% to 93% achieved depending on particle size and leach time.
 - Gravity likely required to recover free gold in high grade mineralization.
- Further characterization and optimization testwork required.



Vein Type Mineralization



132 opt intercept showing free gold

Excellent Infrastructure

- Located 30 kilometers from town of Tonopah, Nevada
- Paved road to site
- Low potential strip ratio – mineralization ranges in depth from outcrop to 250 meters from surface
- Power line proximal to site
- Ample water supply - rights will need to be applied for with
- Close proximity to major equipment supply depots in Round Mountain and Las Vegas
- Mining focused local population



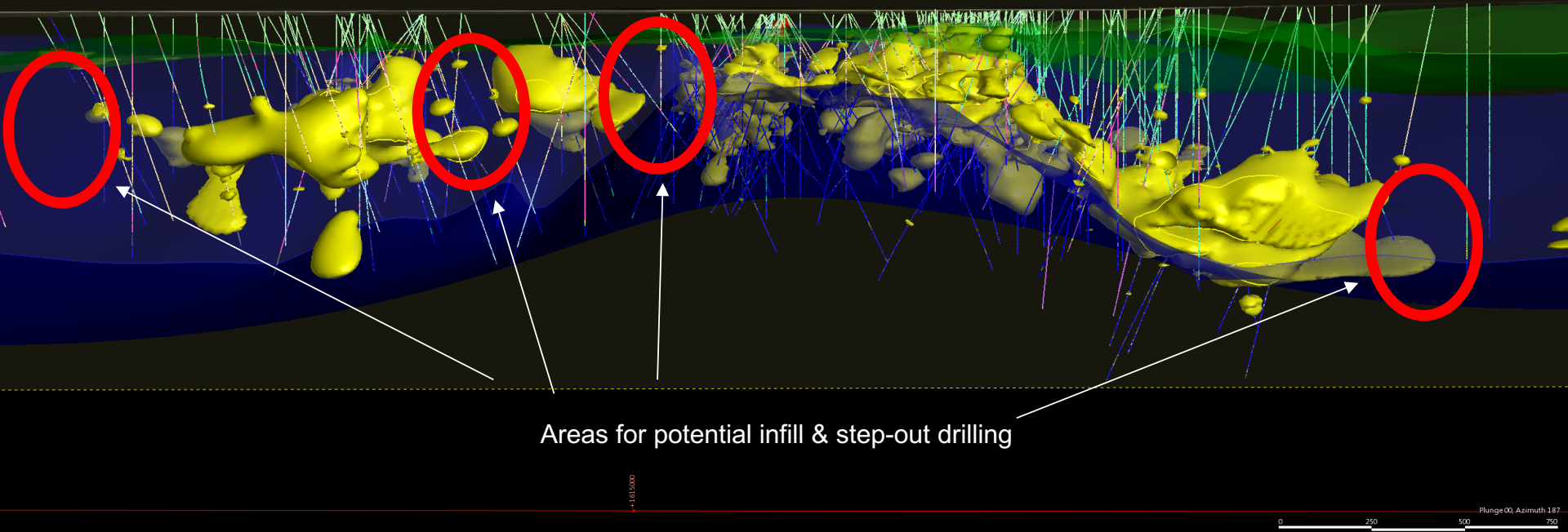
2018 Work Program Goals

Goal: Increase both size and confidence of mineral resource, define metallurgical process route and advance the project to PEA study stage

- An additional 1,500 meters of core and 4,600 meters of reverse circulation drill holes focused on both in-fill and step-out drilling required to expand mineral resource and to convert inferred to measured and indicated
- 28 drill hole, 3,000 meter RC program currently underway
- Detailed program to develop metallurgical samples representative of all rock and alteration types leach recovery and gravity tests
- Clearly define metallurgy process route
- Create baseline water, environmental and cultural studies

2018 Work Program

0.15 gpt grade shell showing gaps in data



Numerous step-out and in-fill drilling opportunities exist to potentially increase resource

Investment Opportunity

- Tonopah project located on the prolific Walker Lane Trend in mining friendly, politically stable State of Nevada
- Strong leadership team
- Tight capital structure – 17.6 million shares outstanding
- Advanced exploration property with fast-track development potential
- Significant initial in-pit Mineral Resource with 44% of contained ounces in measured and indicated categories
- Gold mineralization amenable to leach/gravity recovery
- Excellent logistics and infrastructure
- Potential to develop low cost, open pit, leach/gravity mill project
- > 1.0 million gold ounce resource potential

Contact Information

James Hesketh, President and CEO

720-291-1775

jhesketh@vivagoldcorp.com

**Valerie Kimball, Corporate Secretary
and Director, Investor Relations**

720-933-1150

vkimball@vivagoldcorp.com

www.VivaGoldCorp.com



Forward Looking Statement

This presentation contains certain information that may constitute forward-looking information or forward-looking statements under applicable Canadian securities legislation (collectively, “forward-looking information”), including but not limited to the exploration potential at the Tonopah Gold Project, metallurgical process route, expected gold recoveries, the potential of the drilling to increase resources, the timing of an updated mineral resource update and future exploration plans of Viva. This forward-looking information entails various risks and uncertainties that are based on current expectations, and actual results may differ materially from those contained in such information. These uncertainties and risks include, but are not limited to, the strength of the global economy; the price of gold; operational, funding and liquidity risks; the degree to which mineral resource estimates are reflective of actual mineral resources; the degree to which factors which would make a mineral deposit commercially viable are present; the risks and hazards associated with mining operations; and the ability of Viva to fund its capital requirements. Risks and uncertainties about the Company’s business are more fully discussed in the Company’s disclosure materials filed with the securities regulatory authorities in Canada available at www.sedar.com. Readers are urged to read these materials. Viva assumes no obligation to update any forward-looking information or to update the reasons why actual results could differ from such information unless required by law.

Cautionary Note to U.S. Investors --- The United States Securities and Exchange Commission permits U.S. mining companies, in their filings with the SEC, to disclose only those mineral deposits that a company can economically and legally extract or produce. We use certain terms in this report, such as “measured,” “indicated,” “inferred,” and “resources,” that the SEC guidelines strictly prohibit U.S. registered companies from including in their filings with the SEC.