

STONework SHOWCASE



COMMERCIAL PORTFOLIO

A black laptop is open on a white, reflective surface. The screen shows a software interface with various architectural drawings and diagrams. Two large, rolled-up white blueprints are resting on the table next to the laptop. The background is a blurred interior space with a wall featuring a geometric, honeycomb-like pattern.

Form & Foundation

www.GraniteMountain.ca

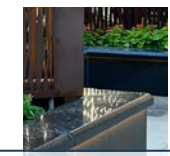


INDEX

Who We Are? 04



10



Richardson Building

Raymond S C
Wan Architects



14

18



Victoria Inn Hotel &
Convention Centre

Industries We Support



23

24



Why Deal with Us?

Payworks
Headquarters



06

Form&Foundation

STONework SHOWCASE

COMMERCIAL PORTFOLIO

www.GraniteMountain.ca/commercial



Who We Are?

With roots dating back to 1995, Granite Mountain Stone Design has grown into a trusted name for high-quality, custom stone fabrication. Founded by Ed Charles and now led by Brent Charles, we've built a reputation for exceptional workmanship, customizable solutions, and superior customer service.

As industry leaders, we specialize in delivering tailored stone products for builders, architects, and designers, with expertise spanning construction, heavy industries, monuments, and architectural projects. Our commitment to innovation, long-term partnerships, and local economic growth ensures we meet the evolving demands of modern commercial spaces—on time and with precision.



Brent Charles with his father Ed at the Lac du Bonnet facility

*No job is too small, too large, or too remote.
Whether by air or water, we can reach
any destination. There are no limits
to how far we will go.*



Our fabrication facility is equipped with modern amenities and industry-leading capacities

COMPANY SNAPSHOT

Business POC: **Brent Charles, CEO**
(204) 345-2765 ex. 101
bcharles@granitemountain.ca

Service Area: **Manitoba, Eastern Saskatchewan and Northwestern Ontario**

Fabrication Capacity: **1,500 sq. ft. daily cutting**
1,200 sq. ft. daily CNC

Lead Times: **1,500 sq. ft. = 1 day**
150,000 sq. ft. = 60 work weeks
Access to partners with similar assets



Core Competencies

We bring a dedicated team, unmatched expertise, and a focus on quality to every project. Our proven ability to meet schedules and deliver superior build quality has earned us long-lasting partnerships with builders, designers, and architects. Backed by industry knowledge and a trusted network of stone experts, we ensure precision, reliability, and exceptional customer service — every single time.

Key Differentiators

We deliver fully customisable solutions tailored to your needs. With an average of 30 years of team experience, we excel in every stage of fabrication and installation. By eliminating confusion and focusing on flawless end results, we consistently meet our promises and build trusted, lasting partnerships. Known for tackling heavy, complex projects, we lead the market with precision, dedication, and a commitment to excellence.



Location:
80 Payworks Way, Winnipeg, MB

Architect:
MMP Architects

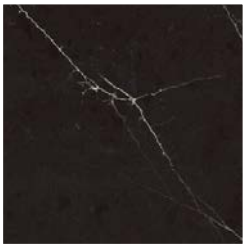
Construction:
Akman Construction



Payworks Headquarters

INTERIOR STONEWORK

The new **Payworks** office building in Winnipeg, Manitoba, is a beautifully crafted, four-storey tribute to the company's focus and priority: its employees. The workforce management solutions company was founded in 2001 and has been headquartered in Winnipeg ever since. The new space allows **Payworks** to deepen its investment and long-term roots in the city's south end, and it was designed by MMP Architects to accommodate continued growth.



Wilsonart
Enchanted
Rock



Terrazzo
Rockyroad
(honed)

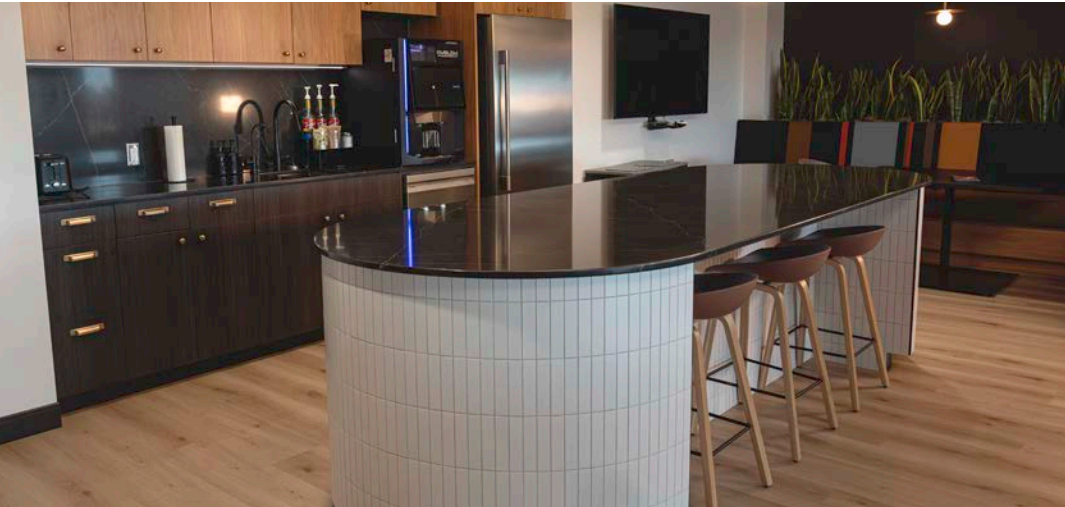


Reception Desk



The Payworks Headquarters project was a testament to precision, ingenuity, and innovation. Tasked with fabricating and installing over 40 slabs of dark quartz stone, this large-scale project spanned multiple office areas, boardrooms, bathroom vanities, the lunchroom, and feature walls.

Meeting contemporary design requirements meant attention to detail at every step

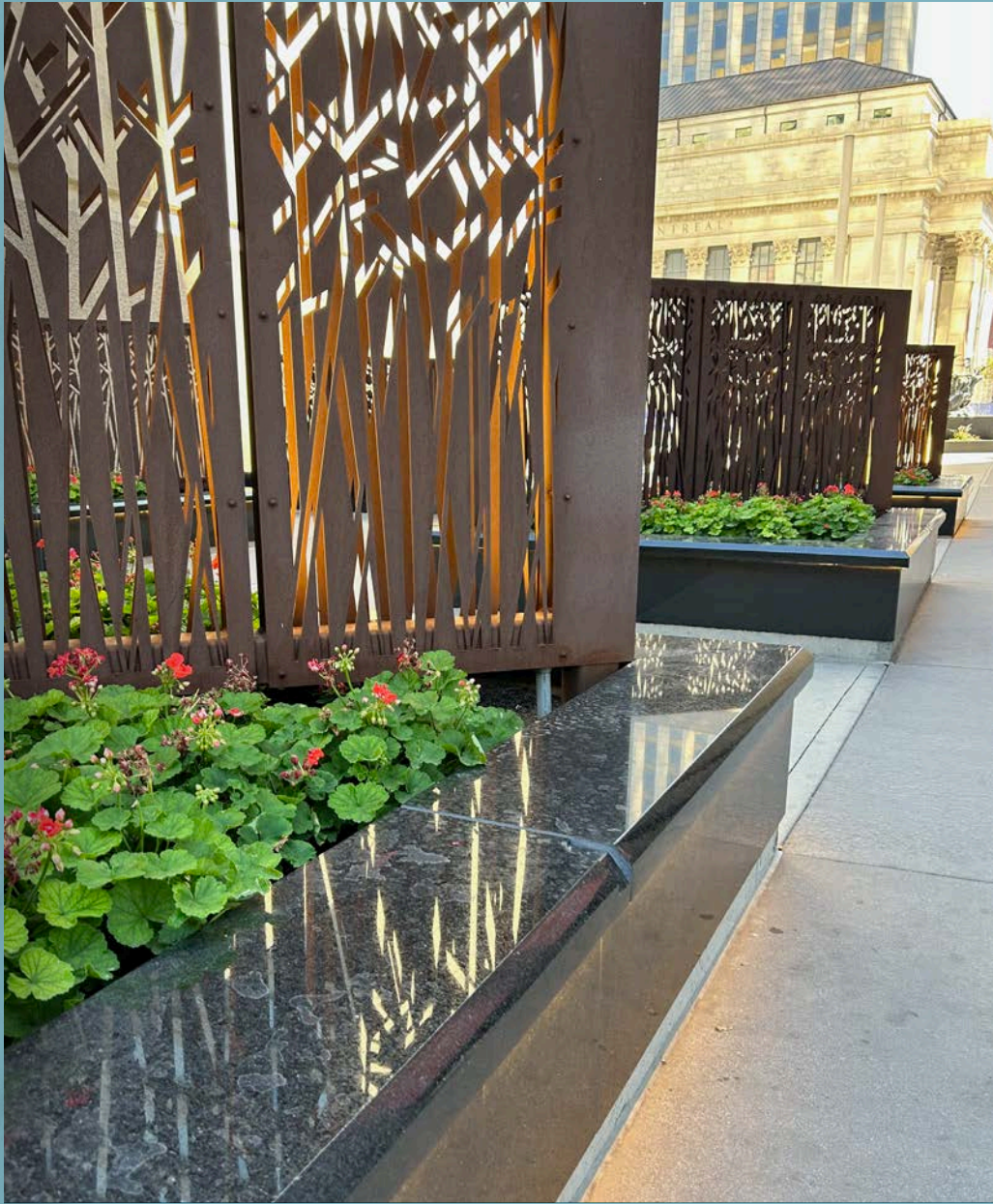


The material—a sleek and sophisticated dark quartz—was chosen to complement the building’s modern aesthetic, bringing an air of timeless elegance and understated luxury to the space.

Meeting contemporary design requirements meant attention to detail at every step, from precise cutting and finishing in our fabrication shop to seamless installation across various surfaces. However, the project wasn’t without its challenges. Amid pandemic-related delays in material availability, our team remained agile and proactive, ensuring the workflow stayed on track without compromising quality. Through teamwork, dedication, and creative problem-solving, we delivered a final product that harmonized durability and design—elevating the Payworks Headquarters into a showcase of refined craftsmanship.

The result is a space where the sleek stonework serves not only as a functional element but also as an integral part of the building’s architectural story—modern, polished, and built to inspire.





Richardson Building

PLAZA PLANTERS

Location:
1 Lombard Place, Winnipeg, MB

Construction:
Lead Masonry

At the iconic Portage and Main intersection, we had the opportunity to clad six large planters at the base of the Richardson Building with Cambrian Black granite, a classic Canadian stone renowned for its durability and timeless appeal.



*More than
500 square feet
of natural granite
perfectly blending
form and function*

*The planters light up creating
a stunning effect in the dark*



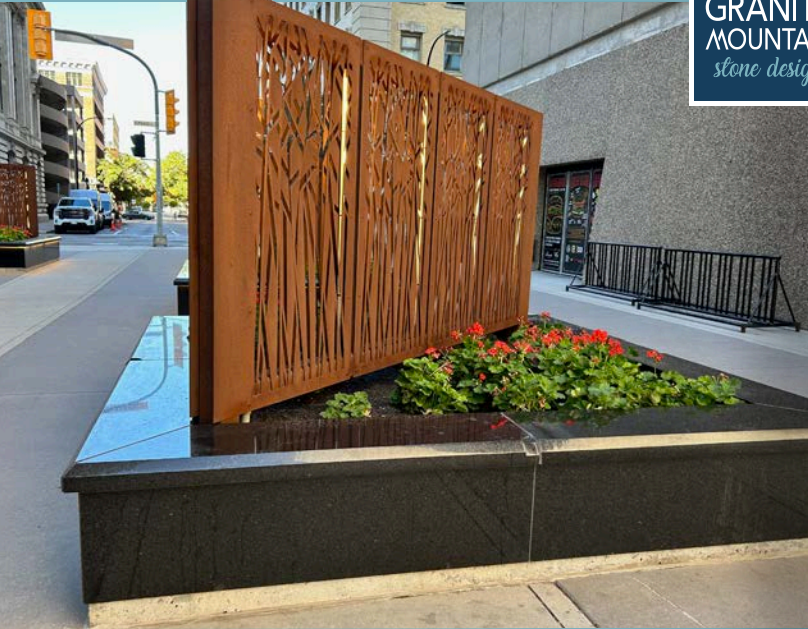
Designed to endure the city's infamous -50°C winters, this project required precision and resilience. The horizontal surfaces feature robust 3" thick stone, ensuring strength in heavy-use areas, while the vertical panels are fabricated from 0.75" thick stone for a seamless, refined finish.

In total, more than 500 square feet of natural granite was expertly installed—perfectly blending form and function while enriching this iconic corner with the enduring beauty of Canadian stone artistry.



Seal River Crossing sculpture found at the plaza between the Fairmont Hotel and the Richardson Building fabricated by us with natural stone.

Anti-skateboarding notches were incorporated during the fabrication process.





Raymond S. C. Wan Architects

RECEPTION DESK

Location:
50 Willow Ave, Winnipeg, MB

Cabinetry:
Altima Cabinet Works Ltd

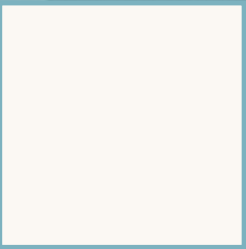
For the reception desk at **Raymond S. C. Wan Architects**, we crafted a stunning piece using Hanstone Royale Blanc quartz. This pristine ivory surface, free of bold patterns, brings an air of refined simplicity that enhances both contemporary and classical design aesthetics.





The desk's clean, modern lines are a perfect reflection of the firm's architectural sophistication. Meticulous attention to detail was essential to achieve the intricate design, including the striking 45° light strip feature on the side, which adds subtle visual interest and highlights the workmanship.

This project is a testament to precision fabrication and thoughtful design, resulting in a reception desk that's not only a focal point but also a true architectural statement—worthy of the firm it represents.





Victoria Inn Hotel & Convention Centre

HOTEL FRONT DESKS

Location:
1808 Wellington Ave, Winnipeg, MB

Cabinetry:
Altima Cabinet Works Ltd

We had the pleasure of crafting two stunning reception desks for the Victoria Inn Hotel & Convention Centre. The design features a sophisticated pairing of contrasting quartz: Caesarstone Turbine Grey for a rich, darker tone, and Arctic from our exclusive Infinite Series for a bright, clean balance.



Caesarstone
Turbine
Grey



Infinite
Series
- Arctic





Precision fabrication was key—each desk includes mitered edge lamination for a seamless finish, and a carefully designed ledge running at varying heights. The result? A perfect blend of style and function, enhancing the welcoming experience for guests while showcasing the beauty and versatility of quartz stone.

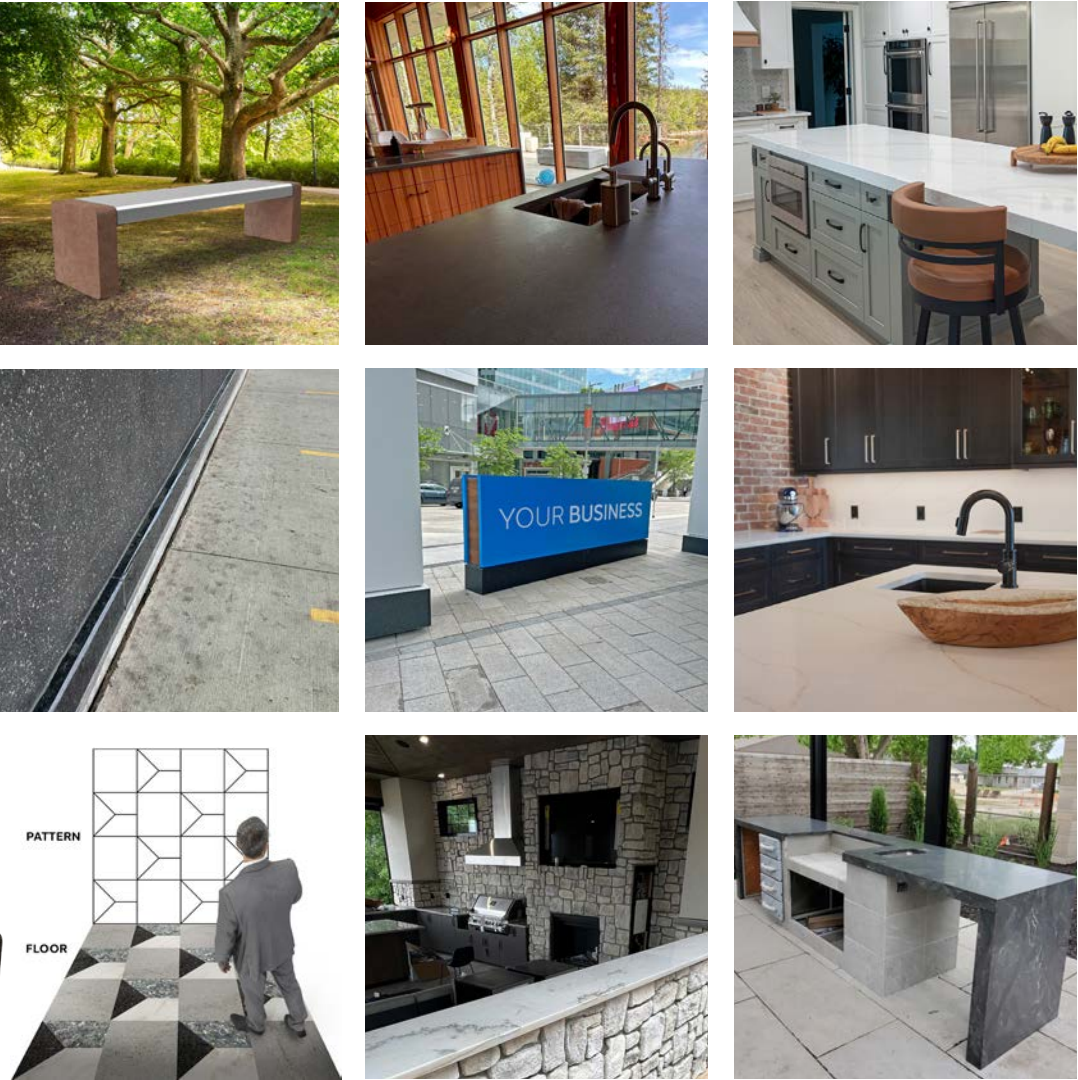


The mitered stone's two-tiered design offers a perfect balance of style and functionality



We proudly serve monument and memorial clients through our dedicated Memorial Stone subdivision.

A GLIMPSE AT SOME OF OUR WORK

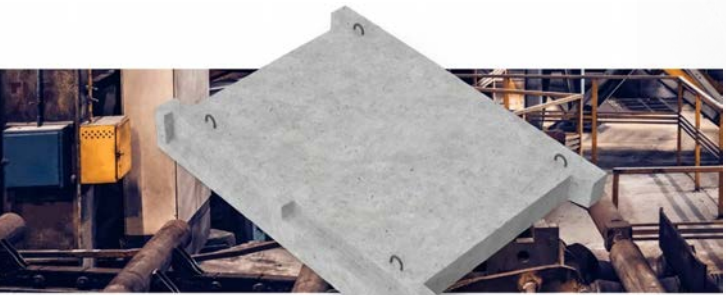


Industries We Support



CONSTRUCTION INDUSTRY

countertops,
floors and
walls,
curbing,
stair treads,
building
veneer



HEAVY INDUSTRY

buildings,
bridges,
paving, and
many other
exterior
projects



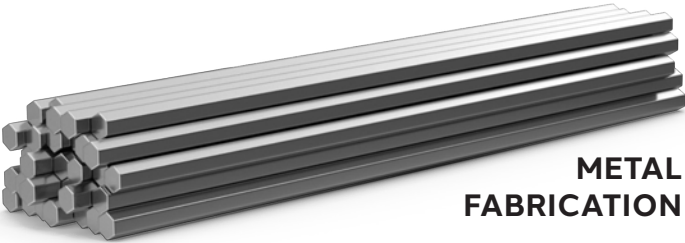
MONUMENT & MEMORIAL

monuments,
markers,
foundations,
columbaria



ARCHITECTURAL

walls,
staircases,
columns,
fireplace
surrounds
and other
decorative
elements



METAL
FABRICATION

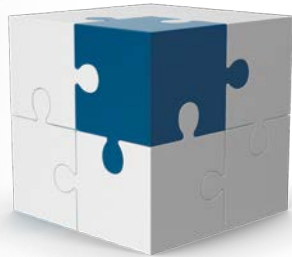
Why Deal with Us?

Commitment



With each job, we guarantee a committed and dedicated team that is focused on the customer's expectations and strives to provide the best experience possible.

We Are Experienced



The core of our team possesses extensive knowledge of all stages of fabrication and installation process as well as a strong dedication to the industry.

Expertise



Our extensive expertise and dedication to scheduling and quality have empowered us to cultivate enduring relationships with our customers and forge ongoing partnerships.

We Travel Far



We travel to every region of Manitoba. we often install in northwestern Ontario and eastern regions of Saskatchewan. Even if your destination involves travel by water, we can accommodate you.

Knowledge



With market research, deep industry knowledge, and a network of experts, Granite Mountain Stone Design has a competitive edge that sets us apart from others in the industry.

We Are Rock Solid



We remain professional and true to our roots at all stages of the process. Maintaining our solid reputation is important to us. We have adopted to changing markets and industry standards.

WE ARE PROUD MEMBERS OF:



Manitoba Home
Builders' Association



WINNIPEG
CONSTRUCTION
ASSOCIATION
Together We Build Manitoba



ARCHITECTURAL WOODWORK
MANUFACTURERS ASSOCIATION
OF CANADA



PROFESSIONAL
INTERIOR DESIGNERS
INSTITUTE OF MANITOBA

GRANITE MOUNTAIN STONE DESIGN

Lac du Bonnet Office:
50 Bruchanski Road, Lac du Bonnet, MB
(204) 345-2765 | 1-866-306-4673
sales@granitemountain.ca

Winnipeg Showroom:
799 Kapelus Drive, West St. Paul, MB
1-866-306-4673
sales@granitemountain.ca



100% CANADIAN COMPANY

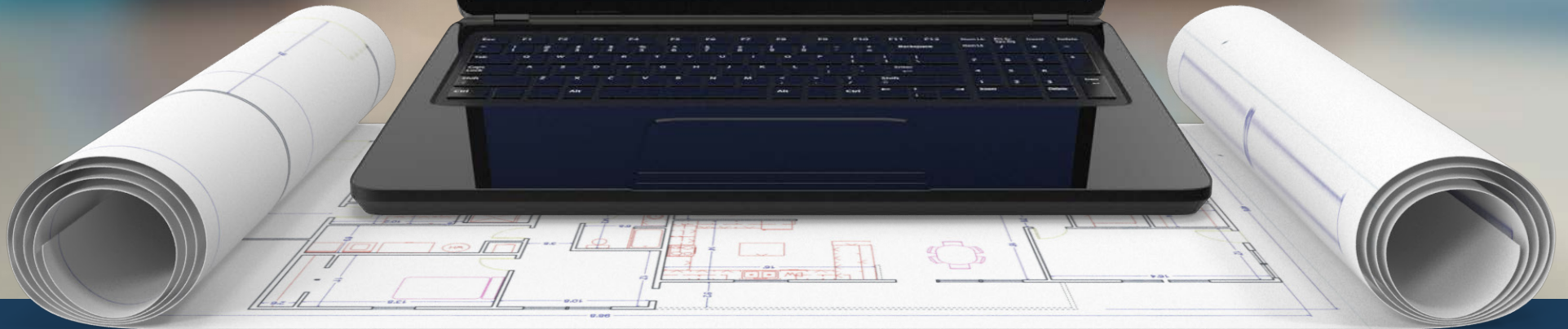
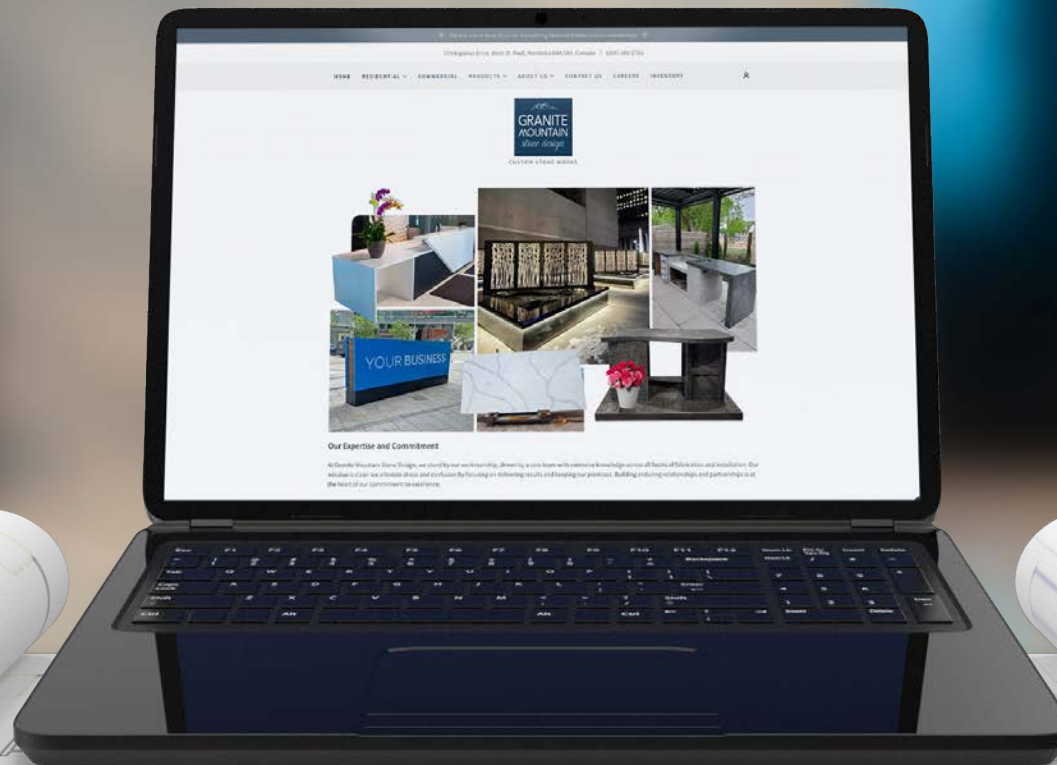
We are a locally owned, family-run business with Indigenous ownership, employing Manitobans, including 25% Indigenous staff, and proudly supporting our local community.

STONework SHOWCASE



COMMERCIAL PORTFOLIO

Form&Foundation



www.GraniteMountain.ca/commercial