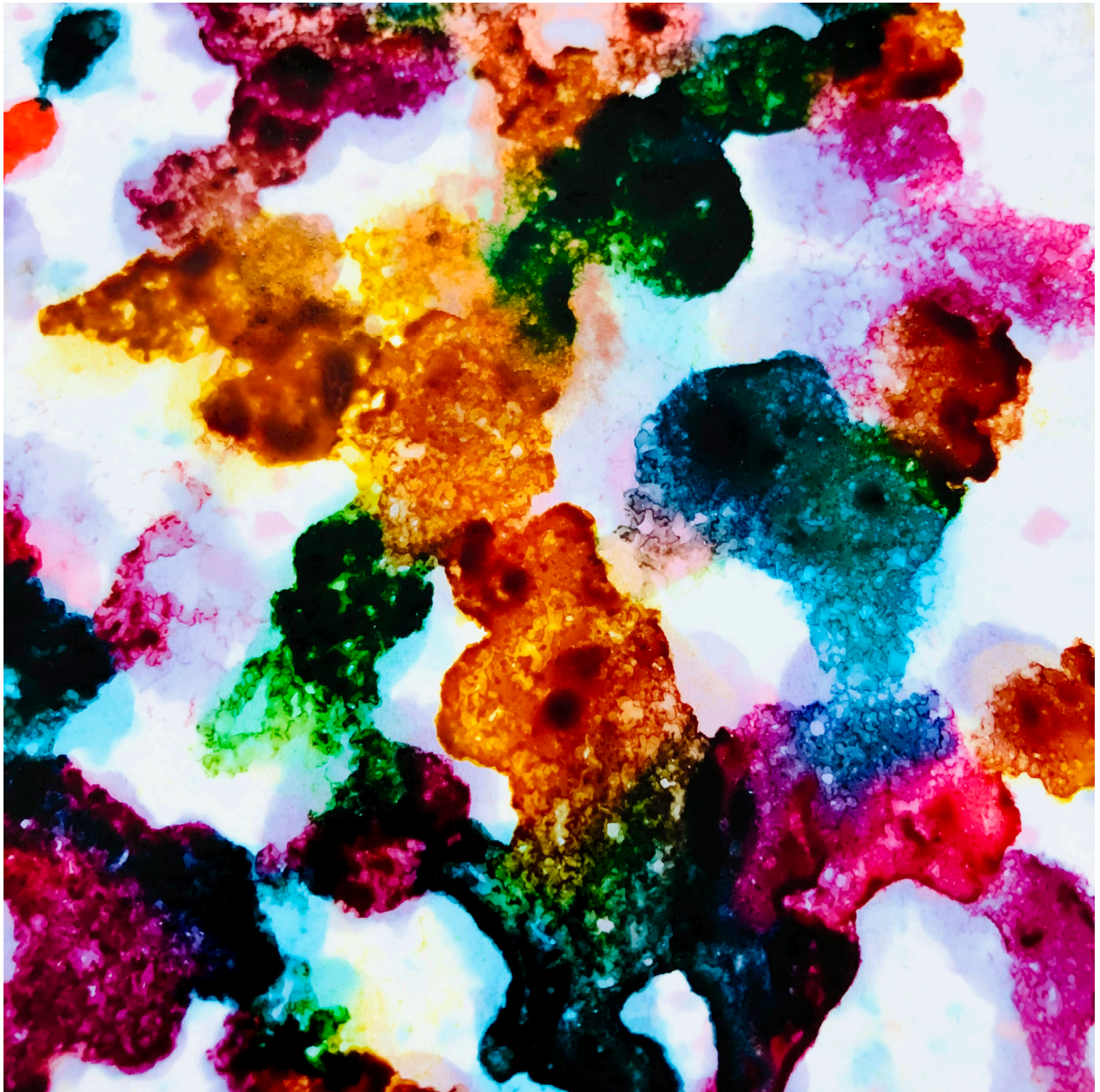

AUDACIOUS BEAUTY, CO.

BE BOLD. BE BEAUTIFUL.



M O M E N T U M

The Visionary Couple

Chris & Paige



Transformation Through Creativity

Audacious Beauty, Co. is a creative enterprise at the intersection of vibrant art, truth, and imagination. With a commitment to unrestrained creativity, our projects span awe-inspiring art-installations and community events.

Our mission is to allow art to be a force for connection, transformation, and boundless exploration within individuals and communities alike.

AUDACIOUS BEAUTY, CO.

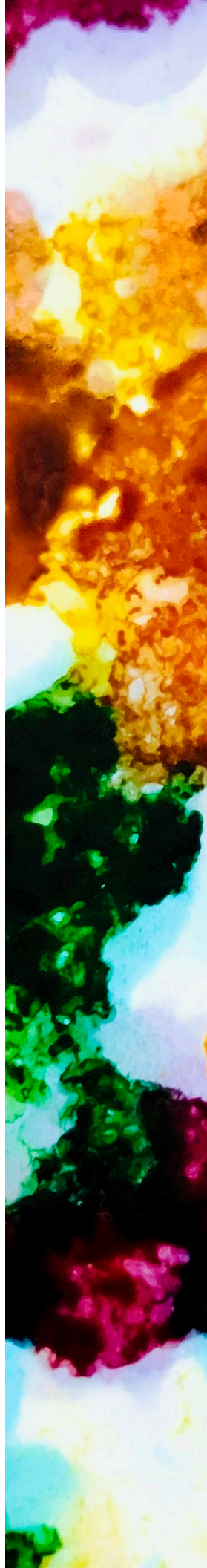
BE BOLD. BE BEAUTIFUL.

Paige D. Lehmann (Artist):

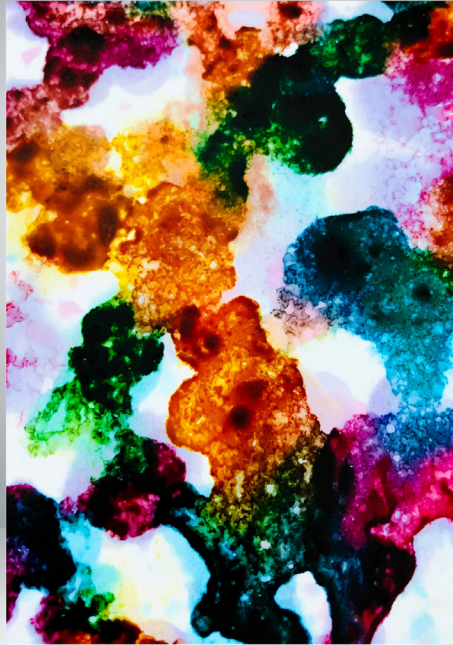
Paige D. Lehmann is an adventurous and multi-functional artist who radiates creativity in every facet of her life. With a natural penchant for exploring uncharted artistic territories, she brings her vision to life through a variety of mediums, from vibrant paintings that burst with color to poetry connecting the heart and the mind. Her work is a testament to her fearless spirit, reflecting an unwavering commitment to breaking free from the constraints of the ordinary. As the founder of Audacious Beauty, Co., Paige's artistry extends beyond personal fulfillment; it's a means of inspiring others and connecting through the beauty of creative expression. Her journey as an artist is a celebration of the audacious, vibrant, and unrestrained nature of the self through art.

Christopher J. Johnson (Executive Director):

Christopher J. Johnson is a dynamic and visionary executive director who brings a wealth of expertise to the table. With a keen strategic mind and a passion for organizational excellence, he is a driving force behind the success of Audacious Beauty, Co. As an executive director, Chris has demonstrated an unparalleled ability to turn visions into reality. His strong leadership is defined by a profound commitment to creating positive change, fostering growth, and ensuring that the missions of the organization are not only fulfilled but thrive. His leadership style is a blend of vision, determination, and a deep-seated dedication to making a difference within communities through vibrant creativity.



M O M E N T U M



Introducing “Momentum” by Paige D. Lehmann, this series will undoubtedly captivate and resonate with life’s journey continually moving towards healing. This exceptional collection, combining vibrant alcohol inks with evocative poetry, is a testament to the relentless pursuit of healing and growth as we navigate the path of the human experience.

Each piece in this collection is a visual and literary masterpiece, a powerful representation of the way we gather strength and momentum on our way to healing. The dynamic interplay of hues, from gentle pastels and soothing blues to deep, calming greens and tranquil purples, mirrors the diverse moments and emotions we encounter on our journey towards wellness. It is a chromatic celebration of the beauty in the process of healing.

“Momentum” is more than just a series; it’s a testament to the synergy between artistic expression and the capacity for healing. It encompasses the essence of perseverance and beauty in the pursuit of wellness. In these pieces, you’ll find the perfect combination of artistic expression and philosophical introspection.

“Momentum” will undoubtedly speak to those who understand the profound significance of the healing journey. It will undoubtedly strike a chord with your sensibilities and remind you of the therapeutic, never-ending journey you have embarked upon.

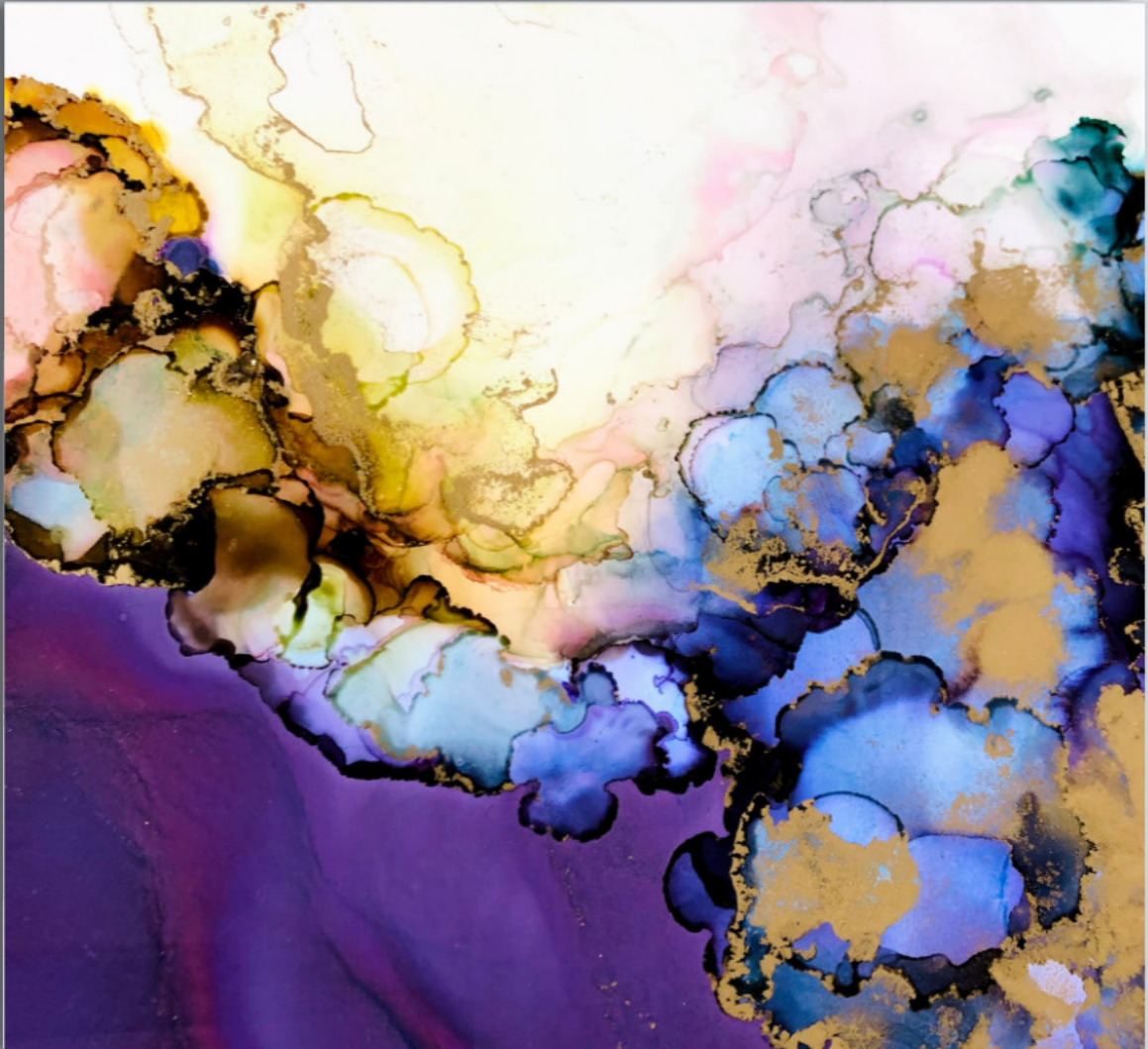
Paige D. Lehmann’s ability to translate the complexities of the healing journey into visually and intellectually stimulating art is unparalleled. Her “Momentum” series is not only a testament to her mastery but also a reflection of your own personal journeys towards healing and self-discovery.

The background is an abstract watercolor composition. It features a mix of colors including deep purple, light lavender, teal, and bright yellow-green. The colors are layered and blended, with some areas showing a fine, speckled texture that resembles gold leaf or fine pigment. The overall effect is organic and fluid, with soft, irregular edges between the color zones.

LAYERS AND TRACES







Christalle



Baby Blue



Chocolate



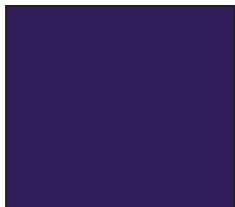
Fawn



Ruthless Empress







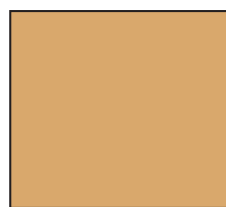
Christalle



Vivis Sky Blue



Chocolate



Fawn

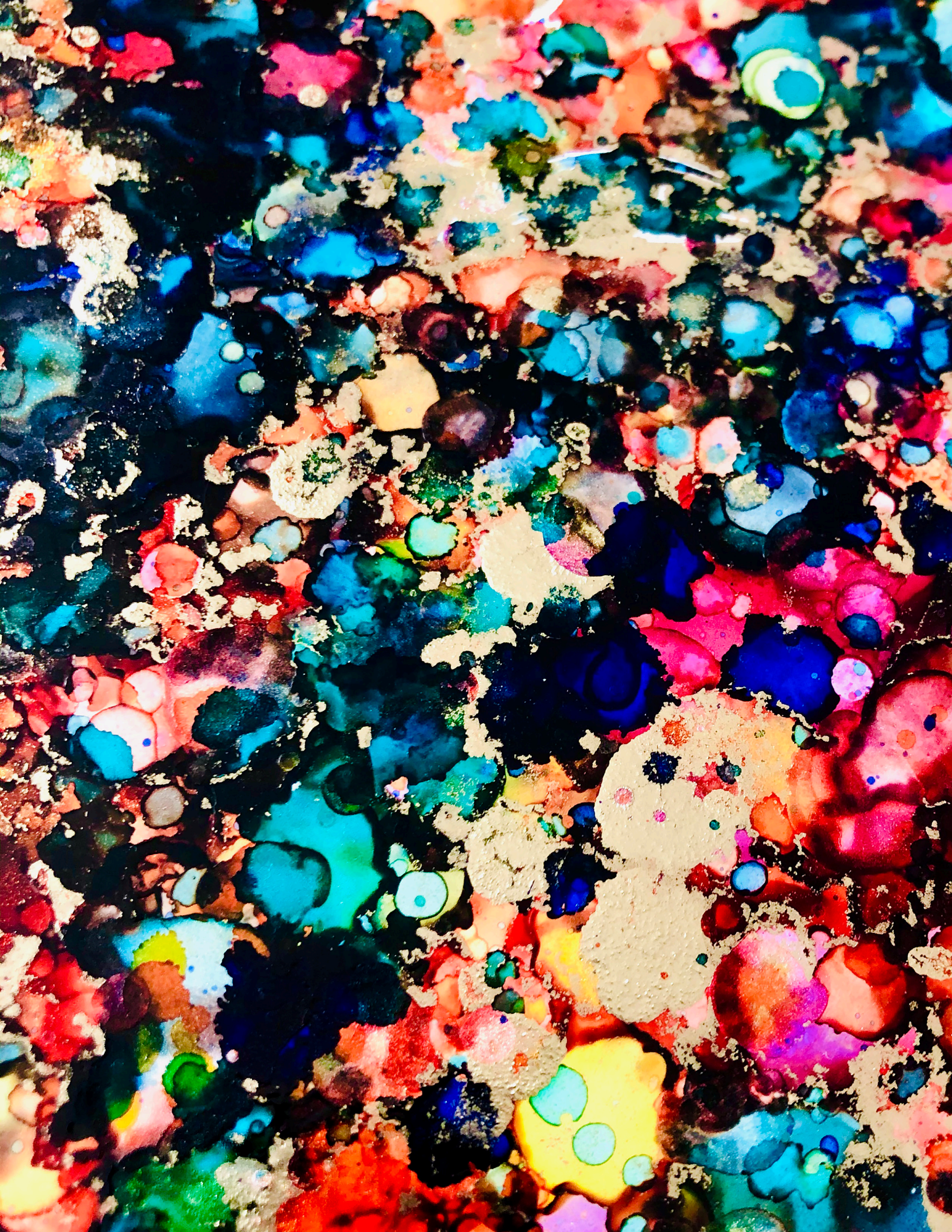


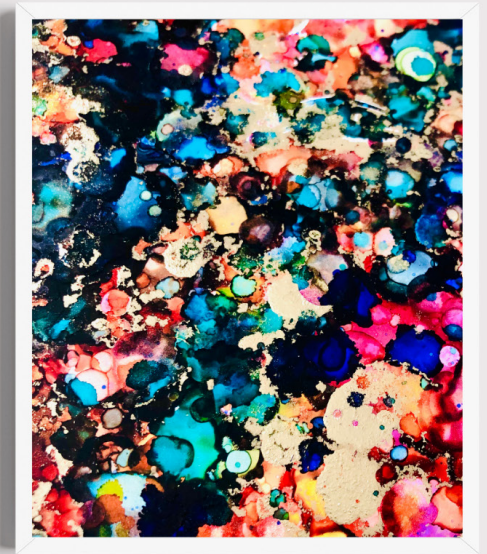
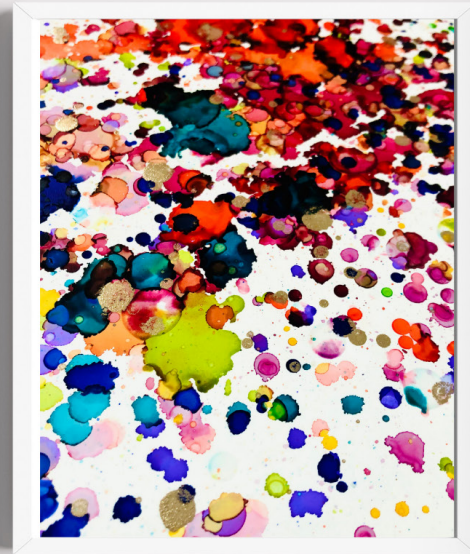
Ruthless Empress



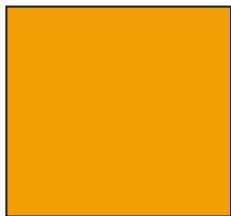


TREE OF LIFE





Debian Red



Classic Orange



Zaffre



Electric Orange

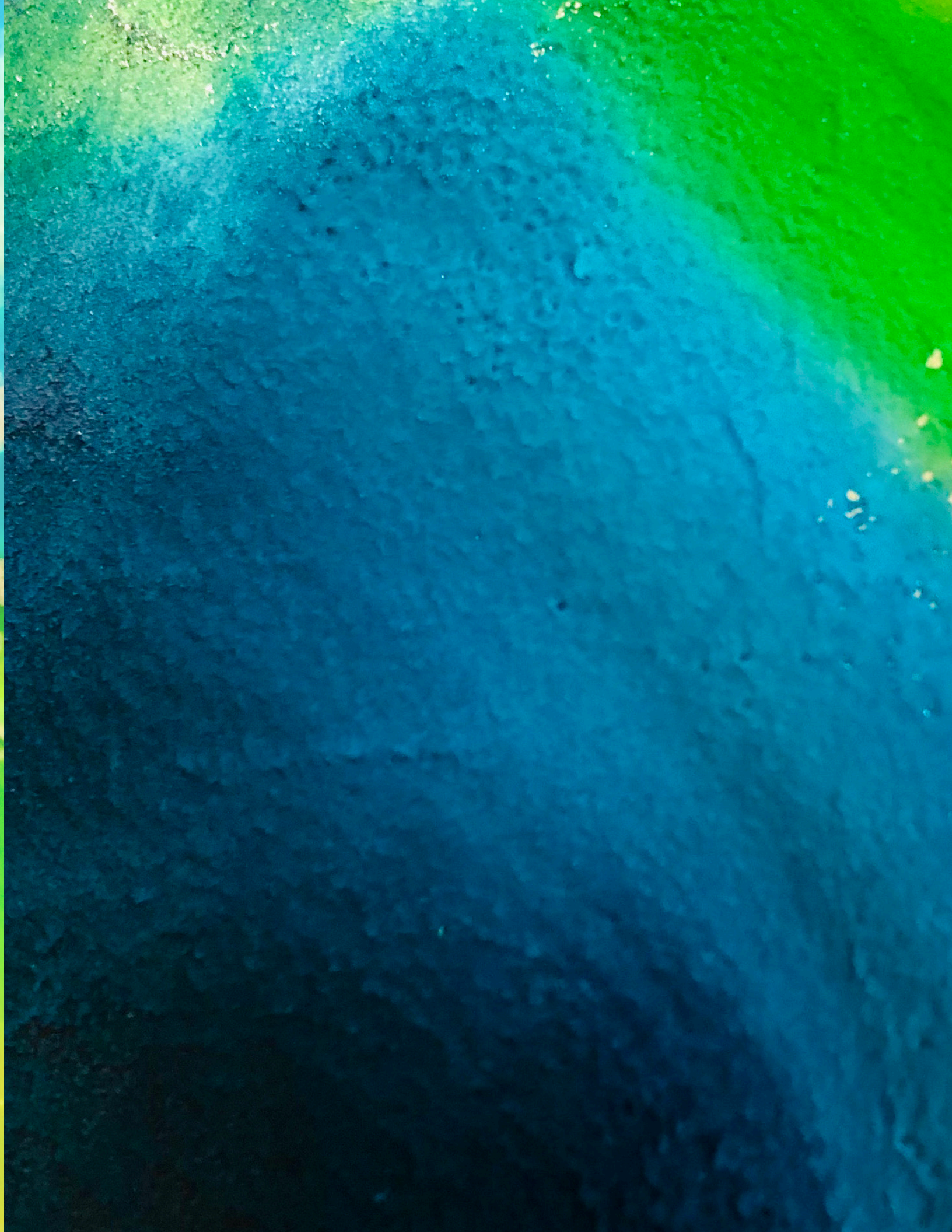






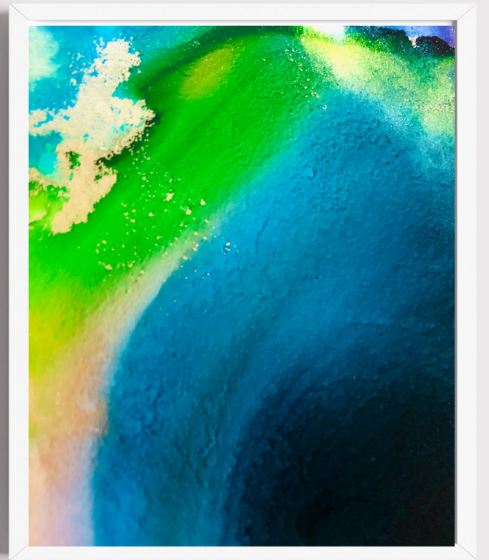
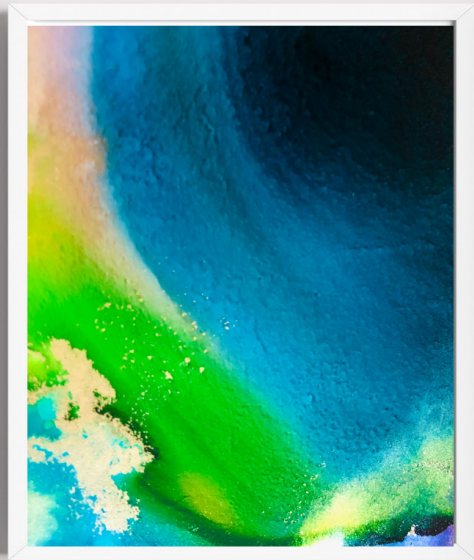
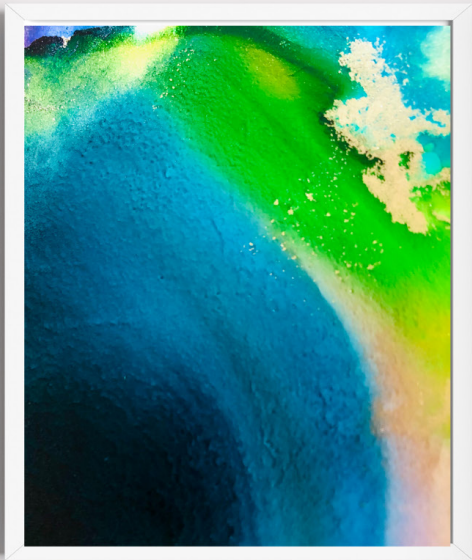


WAVES





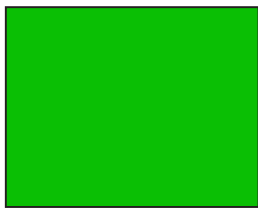




Electric Green



Celadon Blue



Yellow-Green



Bitter Lemon



Peach



WOMAN SET FREE











M O M E N T U M







Medium Violet-Red



Dark Olive Green



Golden Beer



Flame



Dark Teal