
AUDACIOUS BEAUTY, CO.

BE BOLD. BE BEAUTIFUL.



F R E E D O M F R O M
G R I E V I N G

The Visionary Couple

Chris & Paige



Transformation Through Creativity

Audacious Beauty, Co. is a creative enterprise at the intersection of vibrant art, truth, and imagination. With a commitment to unrestrained creativity, our projects span awe-inspiring art-installations and community events. Our mission is to allow art to be a force for connection, transformation, and boundless exploration within individuals and communities alike.

AUDACIOUS BEAUTY, CO.

BE BOLD. BE BEAUTIFUL.

Paige D. Lehmann (Artist):

Paige D. Lehmann is an adventurous and multi-functional artist who radiates creativity in every facet of her life. With a natural penchant for exploring uncharted artistic territories, she brings her vision to life through a variety of mediums, from vibrant paintings that burst with color to poetry connecting the heart and the mind. Her work is a testament to her fearless spirit, reflecting an unwavering commitment to breaking free from the constraints of the ordinary. As the founder of Audacious Beauty, Co., Paige's artistry extends beyond personal fulfillment; it's a means of inspiring others and connecting through the beauty of creative expression. Her journey as an artist is a celebration of the audacious, vibrant, and unrestrained nature of self through art.

Christopher J. Johnson (Executive Director):

Christopher J. Johnson is a dynamic and visionary executive director who brings a wealth of expertise to the table. With a keen strategic mind and a passion for organizational excellence, he is a driving force behind the success of Audacious Beauty, Co. As an executive director, Chris has demonstrated an unparalleled ability to turn visions into reality. His strong leadership is defined by a profound commitment to creating positive change, fostering growth, and ensuring that the missions of the organization are not only fulfilled but thrive. His leadership style is a blend of vision, determination, and a deep-seated dedication to making a difference within communities through vibrant creativity.

FREEDOM FROM GRIEVING

Freedom From Grieving is a captivating exhibition that embarks on a profound exploration of the human journey through the intricate stages of grief. Guided by the visionary artist, Paige D. Lehmann, each piece in this series serves as a vibrant pathway, painting a poignant narrative of healing, transformation, and the ultimate triumph of the human spirit.

As you step into this captivating world of colors, you'll be immersed in a visual journey that traverses the myriad emotions and experiences that accompany the grieving process. Each artwork is a wave of emotion, a symphony of color, and a testament to the resilience residing within each individual.

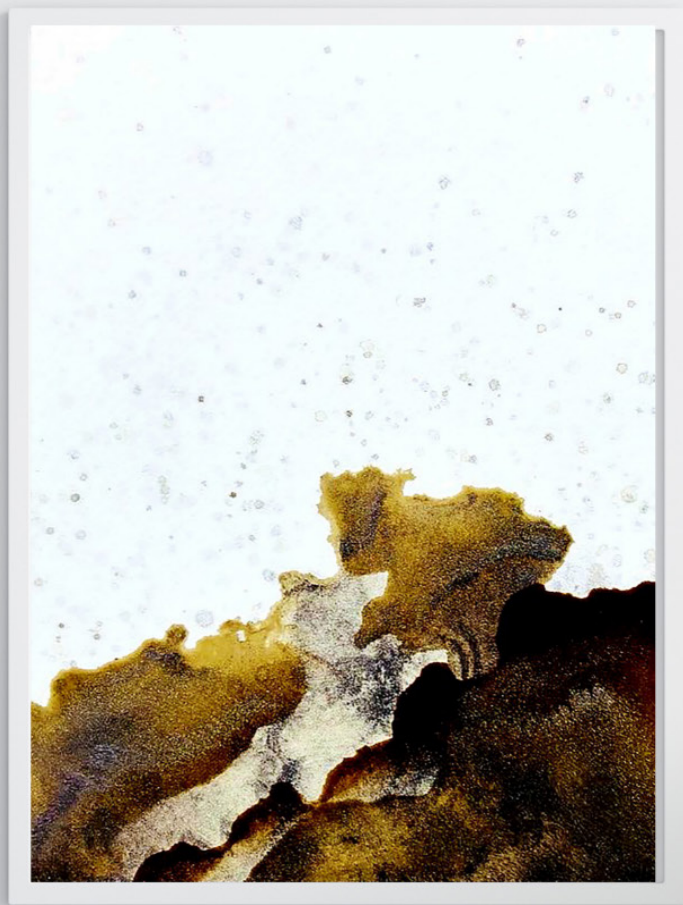
Freedom From Grieving is not just an exhibition of art; it is a celebration of the human experience. Each piece is a vibrant testimony to the transformative power of healing, the indomitable spirit's capacity for joy, and the radiant beauty of the human journey.

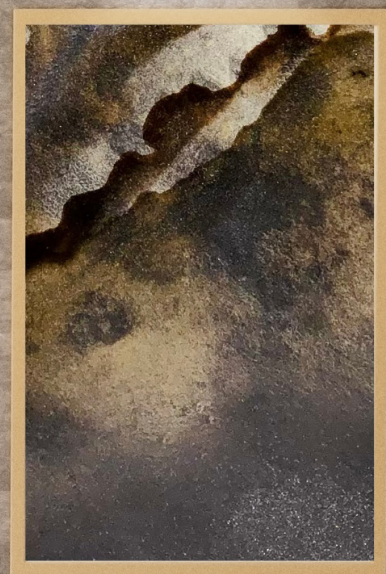
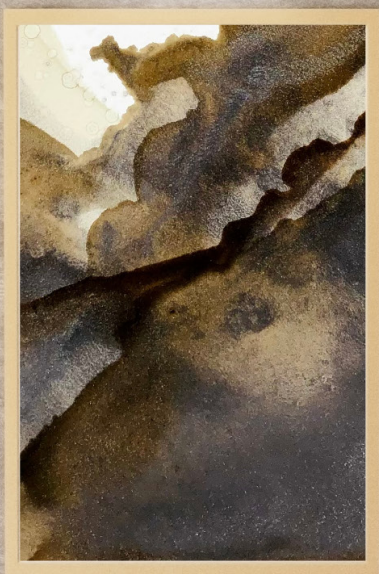
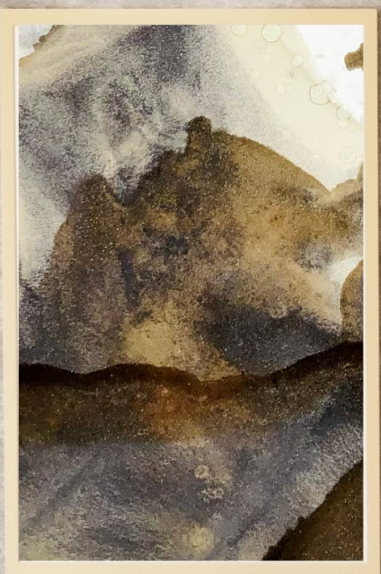
Welcome to a remarkable visual narrative. Come celebrate the triumph of the human spirit as it transcends grief, moving from sorrow to joy, and ultimately embracing freedom and connection.

THE
UNKNOWN



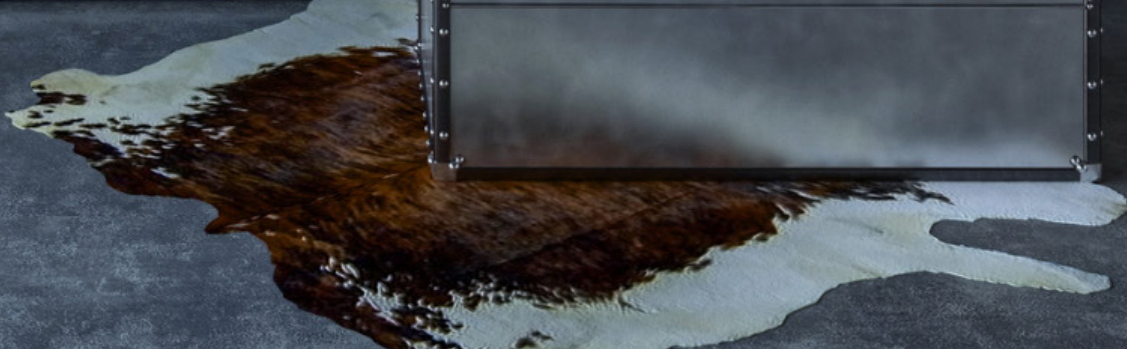


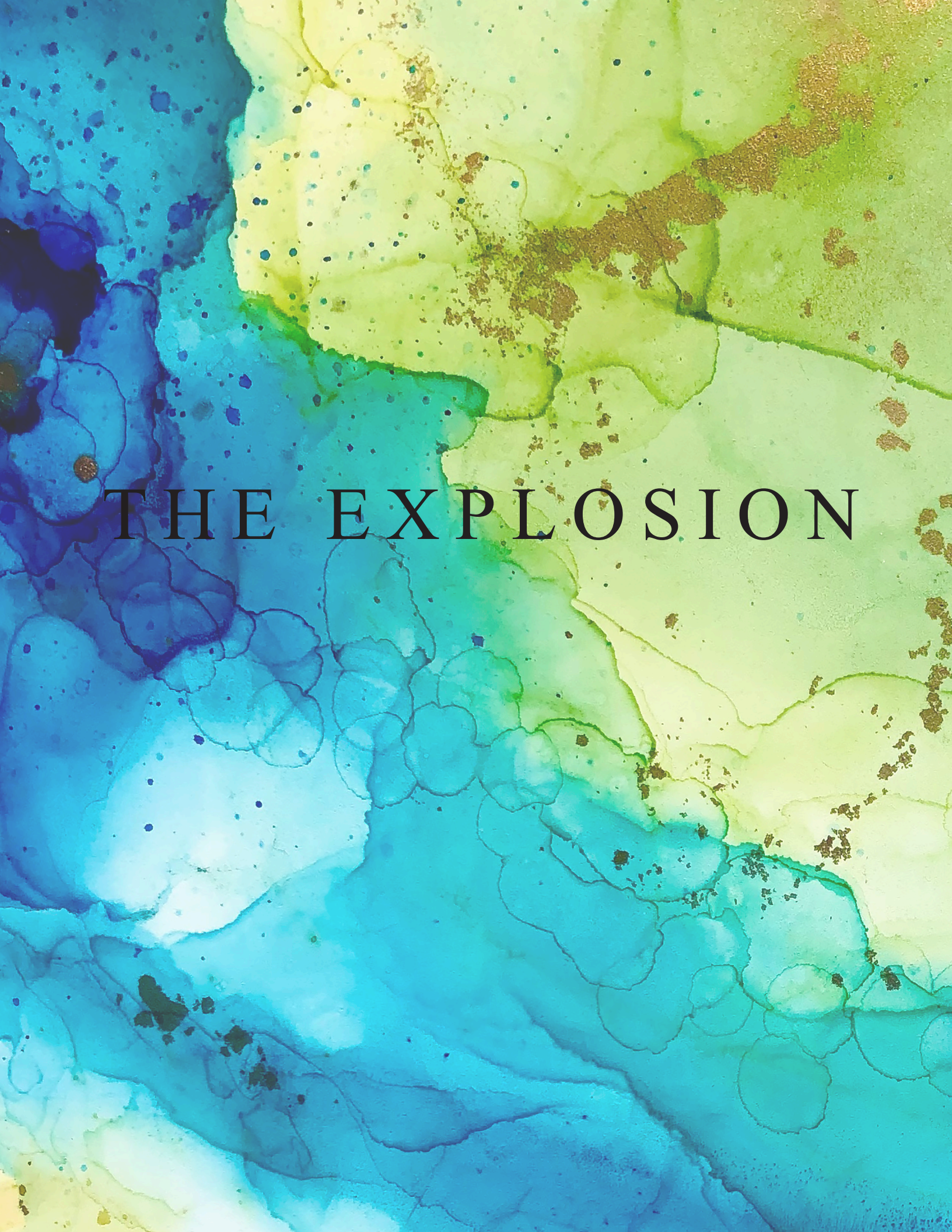






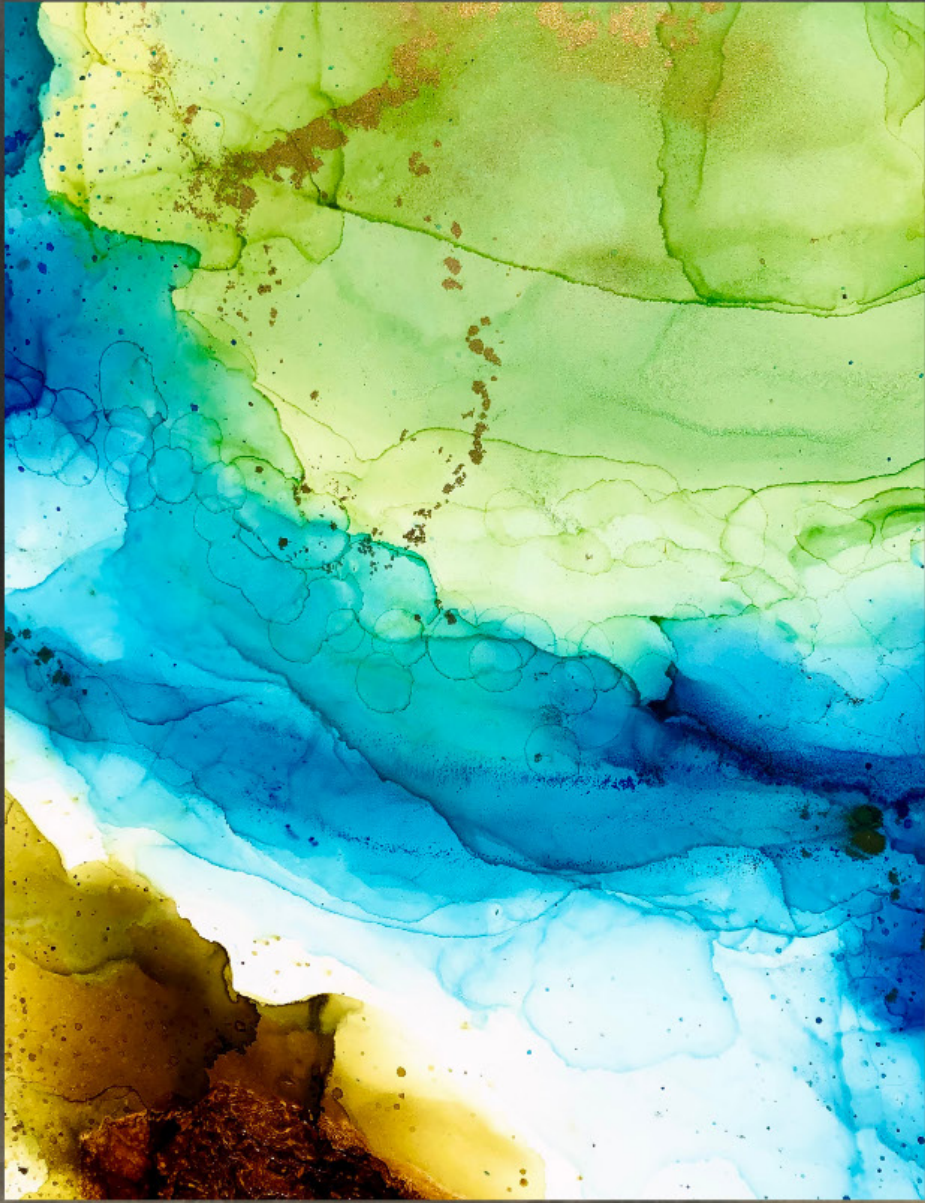
Eggshell





THE EXPLOSION



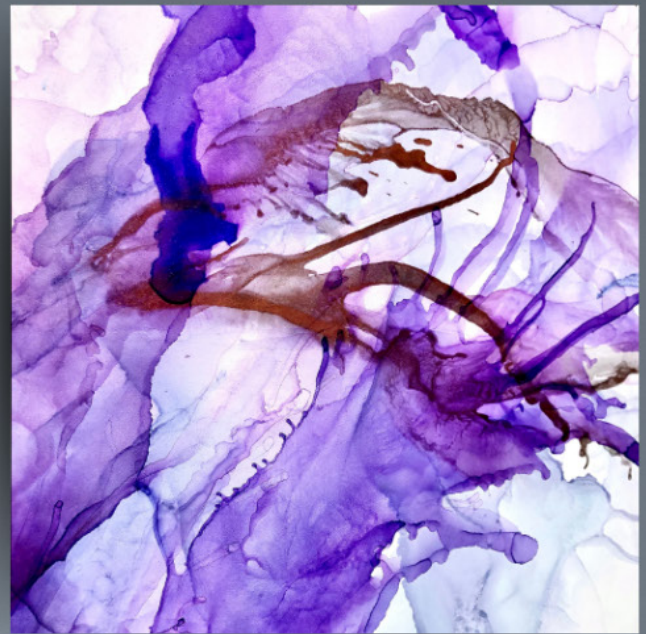
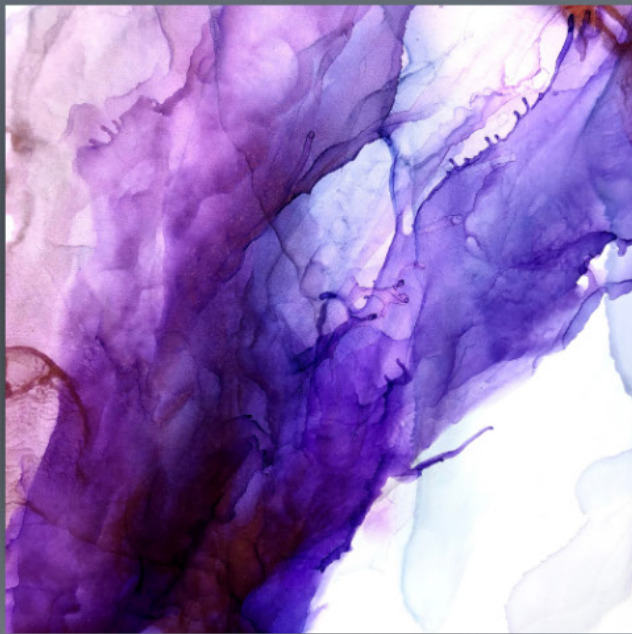


The background is a watercolor wash in shades of purple, lavender, and pink. The colors are blended and layered, creating a soft, ethereal texture. The purple is more prominent on the right side, while the pink and light lavender are on the left. The overall effect is dreamy and artistic.

SMOKE & FIRE

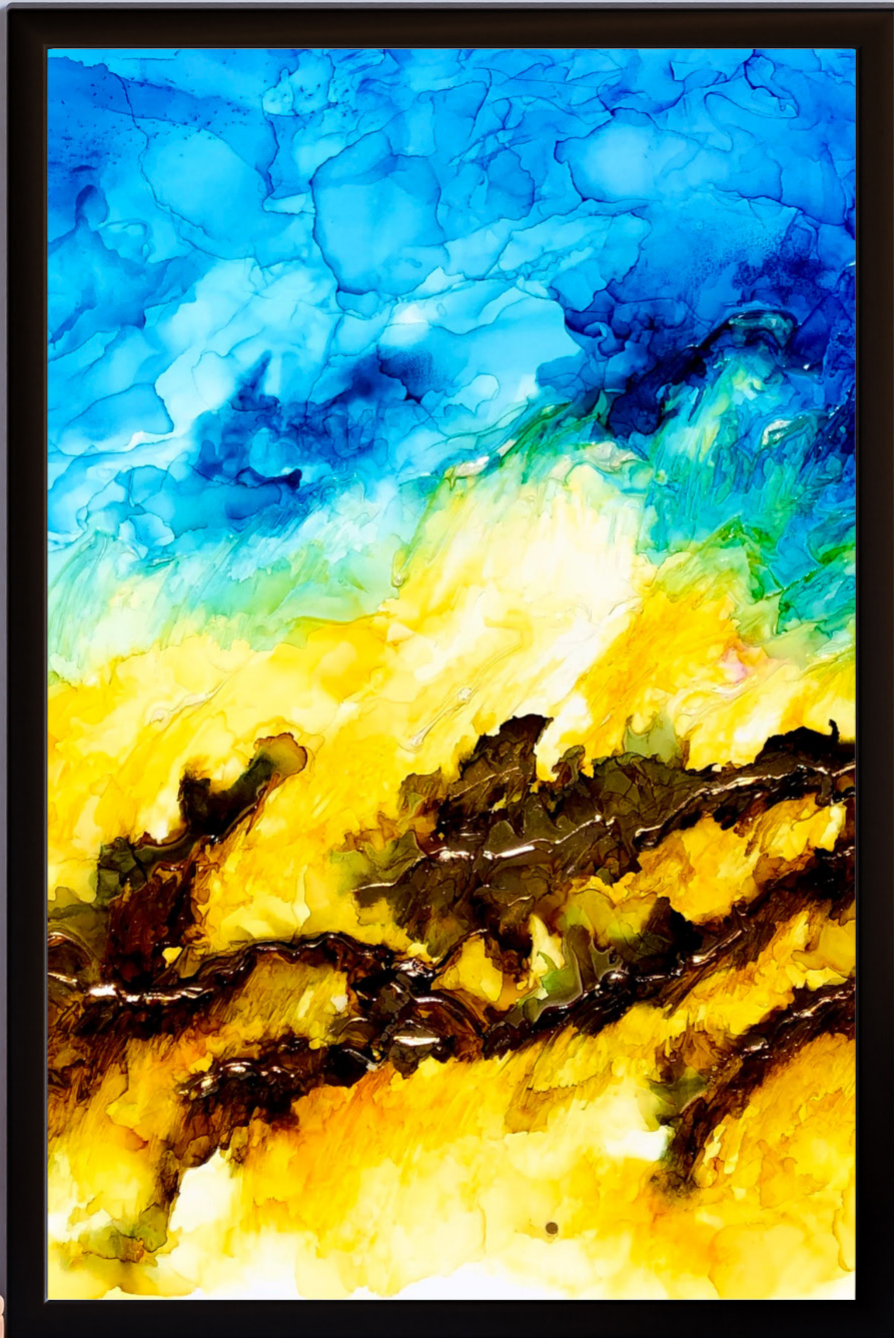






The background is a watercolor wash with a color palette of light yellow, pale green, and muted brown. The colors are blended and layered, creating a soft, organic texture. The yellow is the most prominent, covering most of the lower and right portions. The green is concentrated in the upper left, and the brown appears as darker, more saturated patches, particularly in the lower left and center. The overall effect is reminiscent of aged parchment or a natural, earthy pattern.

T H E O A S I S







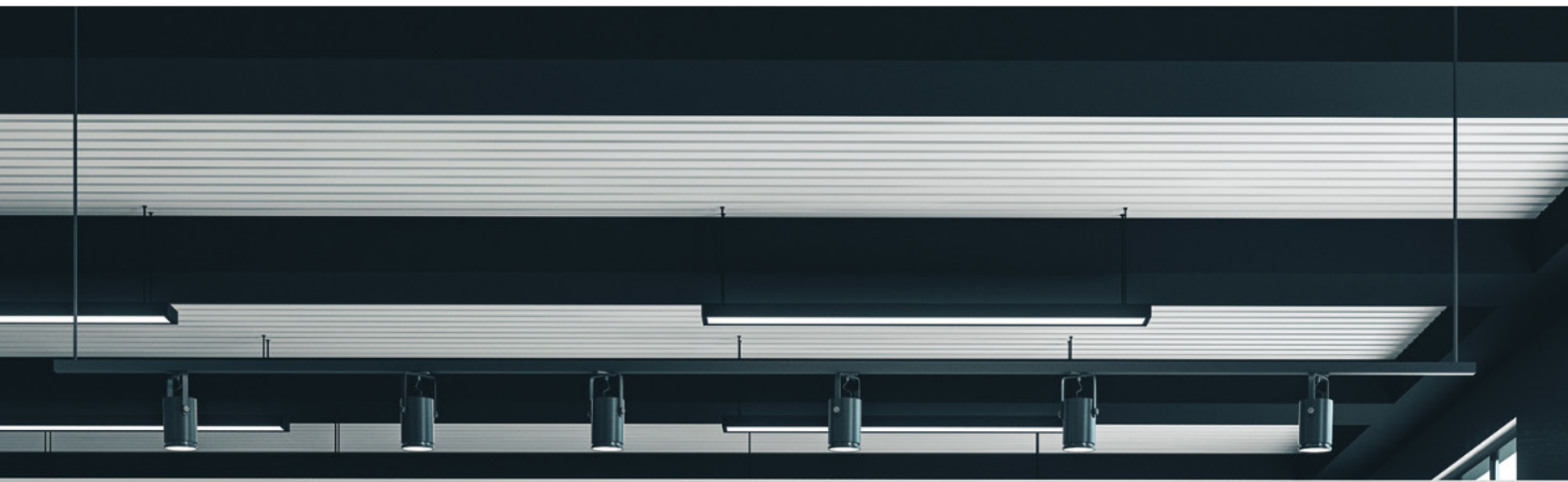
W H E N L I G H T
M E E T S
D A R K N E S S

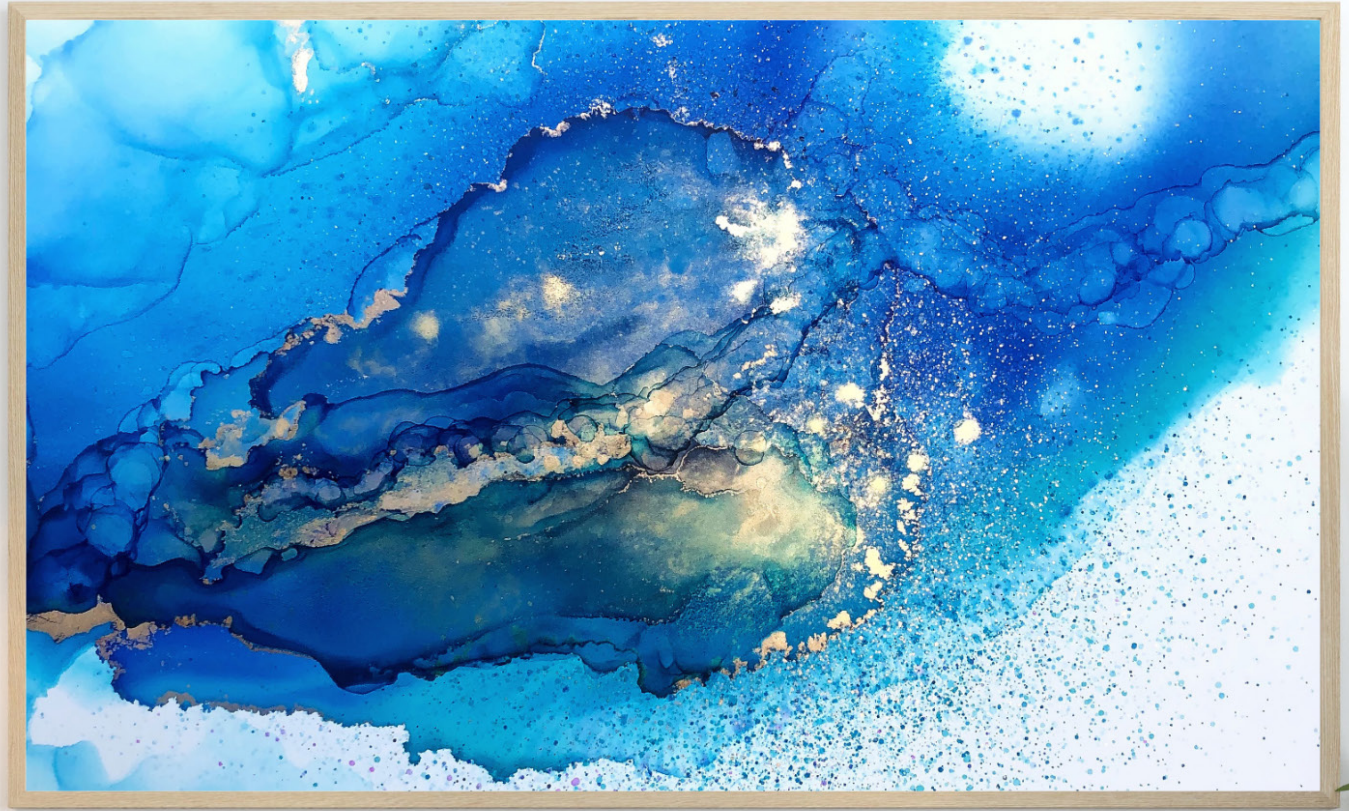






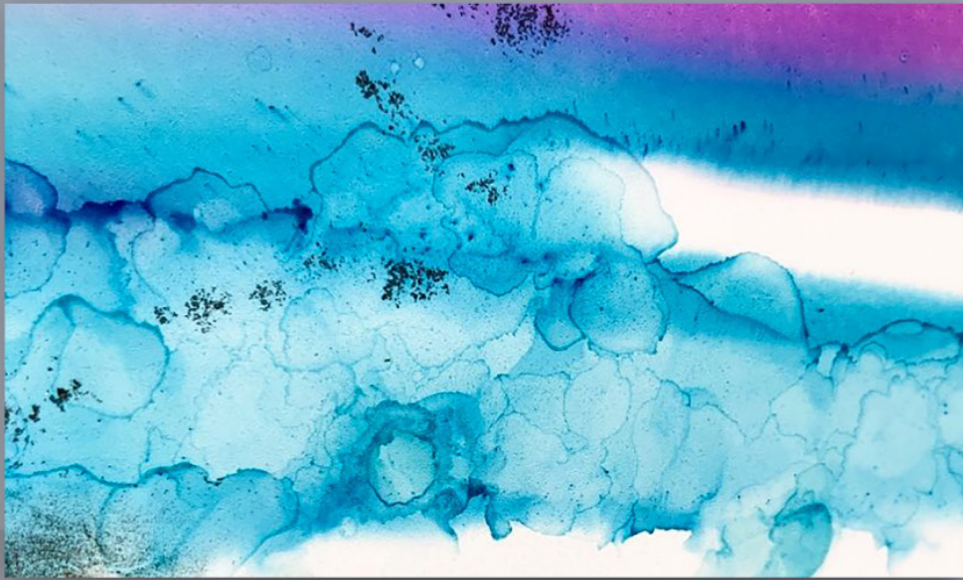
HEART VALVE
REPLACEMENT.





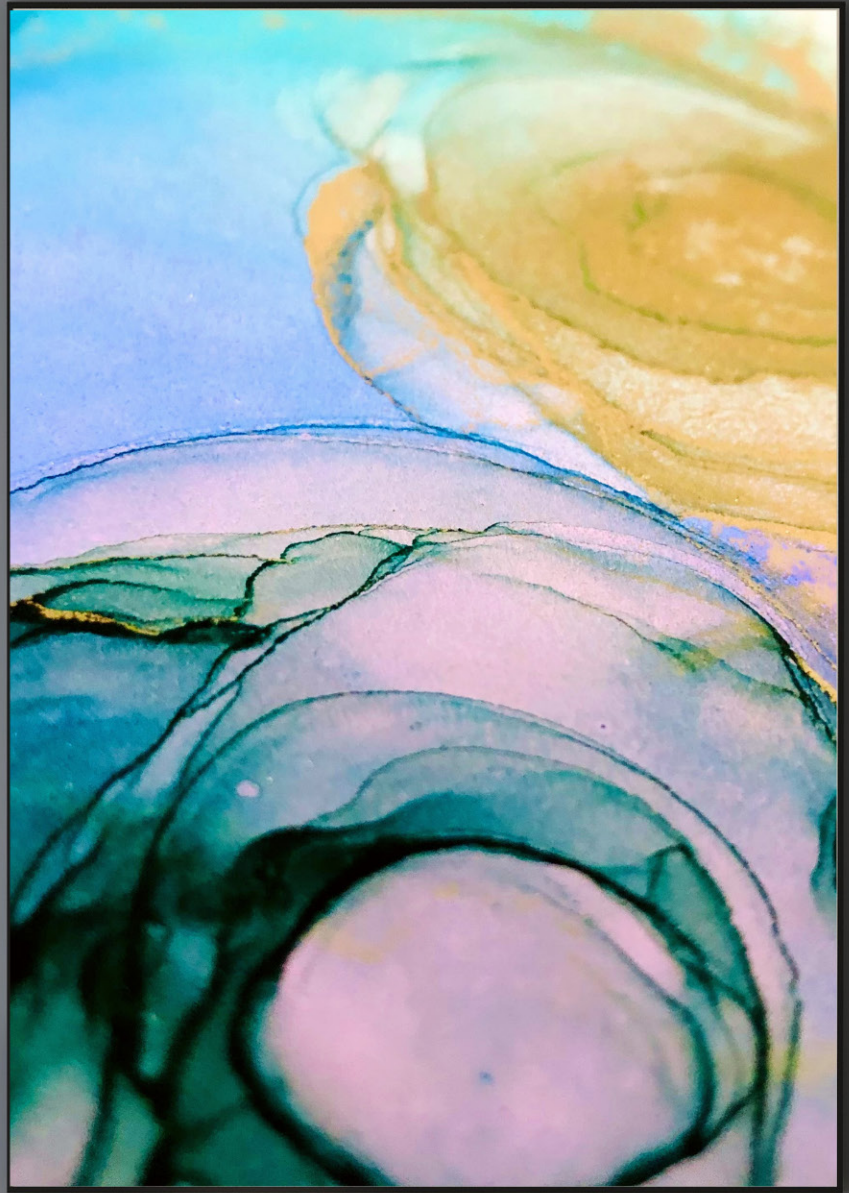
The background is a watercolor-style illustration with soft, blended colors. It features shades of purple, blue, and brown, with some areas appearing more saturated and others more faded. The overall effect is artistic and textured.

ELECTRICITY





J O Y



The background is an abstract composition of colors and textures. A dark, almost black diagonal band runs from the top-left towards the bottom-right. To the left of this band is a bright cyan area with a fine, pebbled texture. To the right is a yellow-green area with a similar texture. The overall effect is that of a microscopic view of a material or a close-up of a natural surface.

T H E E X I T





