



DAKOTA PRAIRIE LODGE & RESORT

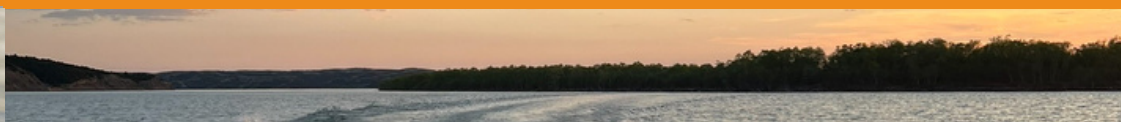
PRAIRIE NEWS



DEADLINE: JUNE 30 WATERFOWL LICENSE INFO NEEDED ASAP

Important update: **All waterfowl license information is required in June** if you are planning to hunt waterfowl with us during the upcoming season. Anyone who is not a resident of South Dakota must have a nonresident waterfowl hunting permit.

Part of our full-service package is applying for this permit on your behalf. We have a strong relationship with South Dakota's Game, Fish & Parks Department and are proud to share our 98% license obtainment success rate. In order to get your waterfowl license, **we need your info by the end of June**. If you booked a duck hunt but did not submit license info, give us a call ASAP.



MONTHLY UPDATES: WHAT'S NEW AT THE LODGE?



Summer at the Lodge is well underway, and we have been enjoying beautiful weather that is perfect for prairie dog hunting and fishing on the Missouri River. One of our hunters might just have broken our record for a whopping 304 prairie dogs eliminated in one day! Do you think you can come close to that feat? There is still time to enjoy the thrill of varmint hunting this summer!

While fall might feel far away, it will be upon us before you know it. Pheasant season starts in less than 4 months, and we have a few spots open in December and January. Call us now to lock in your hunt! In 2024, our state saw a record pheasant harvest, and we expect great numbers again for 2025.

THIS JULY: DALLAS SAFARI CLUB SUMMER EXPO

Come July, we are headed down to Texas to attend the **Dallas Safari Club Summer Expo**. It will be the Lodge's first time at this much-loved show, which takes place in Grapevine, Texas, at the Gaylord Texan Resort & Convention Center. The exhibit halls are open from **Thursday, July 17 to Saturday, July 19**. On Thursday, you can visit us from 1 p.m. to 7 p.m. The show's Friday hours are 9 a.m. to 7 p.m., and the Saturday hours are 9 a.m. to 5 p.m. If you live in Texas or one of the surrounding states, we would love to see you there! Flying in from out of state? The show is located just a short drive from the Dallas-Fort Worth airport.

We have a prime booth location, right near the front entrance. You can find us at **Booth 1111**. We might even bring a few of Molly's puppies with us to the show so that you can get your daily dose of cute puppy snuggles. Hope to see you there!



SECURING THE BRIGHT FUTURE OF HUNTING WITH LAND & LEGACY

As stewards of the wide expanses of prairie in South Dakota, we are committed to land preservation so that future generations of hunters can continue to enjoy broad, unadulterated swaths of the nation. In 2023, we started a 501(c)3 charitable organization dedicated to acquiring land to be conserved for these purposes: [Land & Legacy](#).

Our organization is also focused on preserving natural wildlife and educating the public about the importance of land conservation. As part of this mission, we believe in sharing the ideology behind ethical

hunting. The key tenets of ethical hunting include respect for the natural environment, humane sporting methods, and generous use of any game harvested. The passion for hunting in our country runs deep, and preserving sportsmanship opportunities for the generations to come is an important factor our mission. With that in mind, we are excited to share an update about **80 prime acres of land that we hope to secure through Land & Legacy funds.**



HELP US ACQUIRE NEW HUNTING LAND FOR CONSERVATION AND SPORTSMANSHIP

We recently caught wind of some premium acreage that is up for sale near our South field. This 76.8-acre plot of land is perfect for hunting and conservation. It is home to trophy deer and plentiful pheasants, and the many "prairie potholes" that fill with water attract migrating waterfowl left and right. With both water and a robust, mature tree line on the land, it stands out as the perfect acquisition to our portfolio. With its proximity to our existing land and its ideal natural environment, this parcel would make for premier hunting. We work to ensure that all of our land remains an excellent habitat for pheasants, waterfowl, deer, and other native South Dakota wildlife, and this parcel would be no exception.



Want to invest in the future of hunting and keeping our American heartland in fighting shape for years to come? If so, you can easily contribute toward Land & Legacy today. Imagine donating toward acquiring this land... and then hunting on it next time you are at the Lodge! Every dollar helps us achieve our goals of protecting the wide open spaces in the beautiful midwest and fostering a love of nature and conservation through the rewarding sport of hunting. You can learn more about [conservation in South Dakota](#) on our website, or donate by clicking the button:

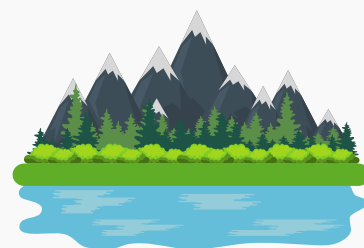
[Support Land & Legacy](#)



PRAIRIE PUZZLE

June Question: What is the highest point in South Dakota?

- a) Black Elk Peak
- b) Mount Rushmore
- c) Terry Peak
- d) Mount Coolidge



Submit your answer by July 10, 2025, for a chance to win! Answers will be accepted via email, phone, or mail. Correct answers will be entered into the prize drawing to receive a FREE Dakota Prairie Lodge & Resort hat.