



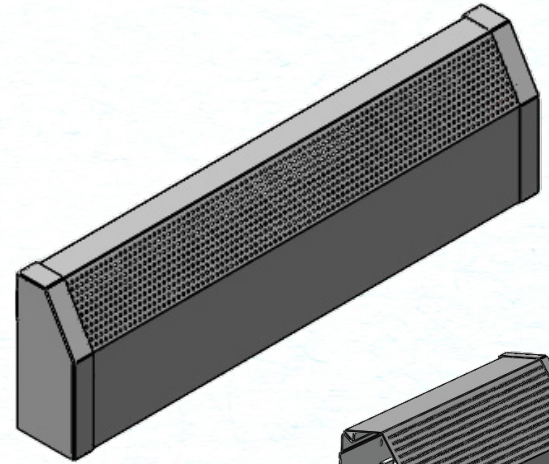
High-Performance Packaged Fin Tube Heating Solution

Versatile | Efficient | Easy to Install

SecurePak 7 is a 7-inch high, **3-inch deep** packaged fin tube heating solution designed for wholesalers, contractors, and retrofit applications. This **all-in-one unit** comes in a compact box for easy transport and installation.

Key Features:

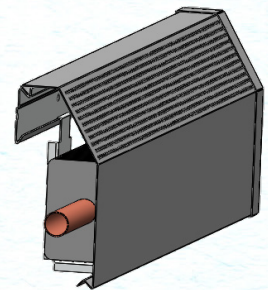
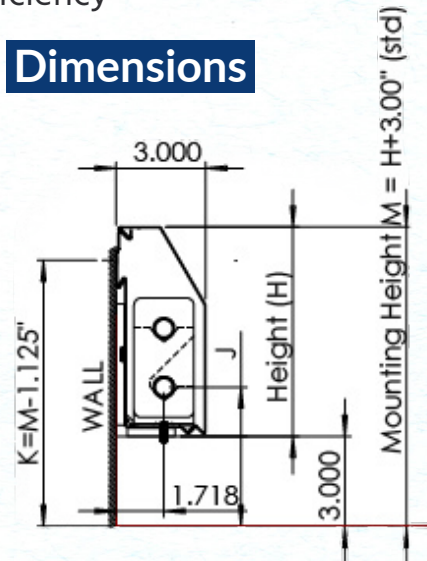
- **Packaged Unit** – Includes enclosure, hanger strip, and heating element
- **High-Performance Heating** – 777 BTU per linear foot at **180°F AWT** with single tube element
- **Versatile Installation** – Ideal for retrofit & restoration projects
- **Seamless Compatibility** – Replaces existing fin tube systems with ease
- **Available Lengths** – 3 ft, 4 ft, 5 ft, 6 ft, 7 ft, 8 ft
- **Compact & Durable** – Built for long-lasting efficiency



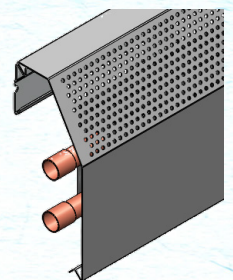
Models

- **SP7x-FA** – Full Assembly, Complete unit with element, cover, hanger strip & brackets (Ready-to-install).
- **SP7A-EO & SP7D-EO** – Element Only, High-output fin tube element for replacements or custom enclosures. A: single Tube, D: Multi Tube
- **SP7x-DE** – Dummy Enclosure, Cover with hanger strip & brackets (No heating element).
- **Accessories** Available Such as; **Inside Corner, Outside Corner, Cradle Bracket, Tier Brackets**, Etc.

Dimensions



SecurePak7 with Single Tube



SecurePak7 with Multi Tube

Specifications

This performance table shows the relationship between water temperature (°F) and the corresponding BTU per linear foot (LF) for different temperature ranges.

"A" coil with 2.72" x 3.5" dimensions and a single 0.75" nominal OD tube.

Water Temp (°F)	200°	190°	180°	170°	160°	150°	140°
BTU/LF	854	777	686	645	509	449	397

"D" multi-tube coil with two 0.625" nominal OD tubes.

Water Temp (°F)	90°	100°	110°	120°	130°	140°	150°
BTU/LF	108	174	246	327	414	505	602

1 GPM flow rate, natural convection (no fan). 65°F EAT, performance corrected from 215°F baseline. Adjust for lower/higher flow rates using correction factors.