

ANTIOXIDANT & STIMULATING  
Goji Mask 2070

**WHAT IS IT?**  
Mask that contains EXTRACTS OF GOJI BERRIES and QUINOA SEEDS. The mixture of these components has antioxidant and stimulating effects on the skin and helps to strengthen the natural protective barrier. QUINOA supplies the skin with proteins of high biological quality, a balanced mixture of amino acids and a high content of B-group vitamins. The skin remains healthy with a youthful appearance. GOJI is characterized by its exclusive polysaccharides, key components of this fruit that are essential for a healthy skin condition. The skin appears more rested, with renewed strength.

**WHO IS IT SUITABLE FOR?**  
This mask is suitable for all skin types, and especially recommended to treat the first signs of ageing. Unisex formula, for all ages at any time of year.

SOOTHING & VITAMINIC  
Sensitive Mask 2040

**WHAT IS IT?**  
Mask with moisturizing properties from MARINE ALGAE EXTRACTS. Contains VIOLET ESSENCE, that is recognized for its soothing properties and OAT that provides vitamins A, B and E.

**WHO IS IT SUITABLE FOR?**  
This mask is especially indicated for sensitive and couperose skins. Unisex formula, for all ages at any time of year.

REGENERATING & ANTI-IRRITANT  
RGnerin Mask 2055

**WHAT IS IT?**  
Modelling mask that contains LINSEED and ALOE VERA EXTRACT. LINSEED provides oil and mucilages with soothing, emollient and softening effects. ALOE VERA leaves contain a substance called aloin, which stimulates the generation of new cells and has soothing, toning and anti-irritant effects on the skin.

**WHO IS IT SUITABLE FOR?**  
For its regenerating and soothing effect, this mask is especially recommended after peelings or exfoliating treatments. Unisex formula, for all ages at any time of year.

REVITALIZING & ANTI-STRESS  
Greentea Mask 2050

**WHAT IS IT?**  
Mask enriched with GREEN TEA and LAVENDER. The GREEN TEA leaves contain polyphenols and catechins, molecules with a great antioxidant power that prevent and diminish cellular ageing. It also contains beta-carotenes that protect the skin from the aggression of solar radiation. LAVENDER is an aromatic herb with a relaxing effect, providing a sensation of well-being.

**WHO IS IT SUITABLE FOR?**  
This mask is especially suitable for fatigued skins or skins that are damaged by external aggressions. Unisex formula, for all ages at any time of year.

DETOXIFYING & MOISTURIZING  
Reaffirming Mask 2020

**WHAT IS IT?**  
The mask's balanced composition based on DIATOMS and MARINE ALGAE EXTRACTS provides excellent hydration and facial muscle toning due to its spectacular cold effect. This mask is capable of retaining impurities and catabolic substances derived from cellular functions.

**WHO IS IT SUITABLE FOR?**  
This mask is especially indicated for mixed, oily and acne skins with dilated pores. Unisex formula, for all ages at any time of year.

STIMULATING & ANTI-WRINKLES  
Vitamin Vegetable Mask 2030

**WHAT IS IT?**  
Mask based on MARINE ALGAE EXTRACTS and a high amount of natural VITAMIN C nutrients from orange and DILL. The VITAMIN C acts as a skin clarifying active principle, antioxidant and stimulant of collagen synthesis.

**WHO IS IT SUITABLE FOR?**  
This mask is especially indicated for mixed, oily and acne skins with dilated pores. Unisex formula, for all ages at any time of year.

OXYGENATING & FIRMING  
Green Mask 2025

**WHAT IS IT?**  
Mask based on mineral substances and skin humectants, featuring moisturizing properties due to its MARINE ALGAE EXTRACTS composition. It also contains MINT ESSENCE, giving the mask its characteristic sensation of intense freshness.

**WHO IS IT SUITABLE FOR?**  
For its hydrating and refreshing effect, this mask is especially indicated after stimulating treatments and the use of cosmetic equipment. Unisex formula, for all ages at any time of year.

FIRMING & STIMULATING  
Re6tense Mask 2060

**WHAT IS IT?**  
Mask based on MARINE ALGAE EXTRACTS, KIWI EXTRACT and POPPY SEEDS. It forms a real cell stimulator that has vitaminic, refreshing, soothing and firming effects on the skin. KIWI is one of the richest fruits in vitamin C, with clarifying properties and the capacity to stimulate collagen and elastin synthesis, and an excellent source of beta-carotenes with antioxidant power. The POPPY SEEDS attribute oils with soothing properties and also contain mucilages that benefit the skin like a protective film.

**WHO IS IT SUITABLE FOR?**  
This mask is especially recommended for flaccid skin, lacking in firmness. Unisex formula, for all ages at any time of year.

MOISTURIZING  
NOVAnew Mask 2045

**WHAT IS IT?**  
Mask that restores the skin's hydration balance, due to the moisturizing properties of the MARINE ALGAE EXTRACTS in its composition. Its GLUCOSE content reinforces the hydrating effect of this mask.

**WHO IS IT SUITABLE FOR?**  
? Indicated for all skin types. Unisex formula, for all ages at any time of year.

ACTIVATING AND REJUVENATING  
Cinnamon Mask 2075

**WHAT IS IT?**  
Pioneer warming effect face mask made with SEAWEED EXTRACT and CINNAMON (Cinnamomum cassia). This exclusive and innovative mask acts producing a hyperemia on the skin that favors the regeneration of collagen and elastin tissues improving the reaffirmation of the facial skin. Cinnamon Mask activates the skin and enhances the amount of nutrients and oxygen to cells, reactivating them and rejuvenating the skin from the inside. Thanks to its composition in seaweed, rich in trace elements, Cinnamon Mask moisturizes deeply.

**WHO IS IT SUITABLE FOR?**  
This face mask can be used for every age and type of skin. Highly recommended for mature skin that needs reactivation and seeks to recover a youthful look. Cinnamon Mask is the perfect complement for rejuvenating and anti-aging treatments. It is also highly recommended for use in combination with radiofrequency treatments to prolong and enhance its effect or even as a substitute for it.



CASMARA  
Prestige



0805 324000 GOLD MASK 2080

ORO  
24K

#### REVITALIZING & REMINERALIZING Gold Mask 2080

##### WHAT IS IT?

A facial mask consisting of 24 KARAT GOLD DUST, MINERALS and SEAWEED EXTRACT. This combination of active ingredients makes the GOLD MASK unique. The 24 KARAT GOLD DUST provides a tightening effect for the face and neckline whilst aiding the intense nutrition and revitalisation obtained from the MINERALS at the same time. The SEAWEED gives the GOLD MASK an intense moisturising effect.

##### WHO IS THIS PRODUCT FOR?

The revitalising and reaffirming effect provided by this product is recommended for all skin types, especially for those lacking vitality and tone. This unisex product is suitable for any age group all year round.



PREMIUM QUALITY PROFESSIONAL  
ALGAE PEEL-OFF FACIAL MASK

#### HOW TO APPLY ALGAE PEEL-OFF FACIAL MASK

1. Empty the entire contents of the sachet (1<sup>st</sup>) GEL and sachet (2<sup>nd</sup>) POWDER into a suitable bowl.



2. Using a spatula, preferably plastic, stir both phases together briskly for about 30 seconds, forming a smooth paste.

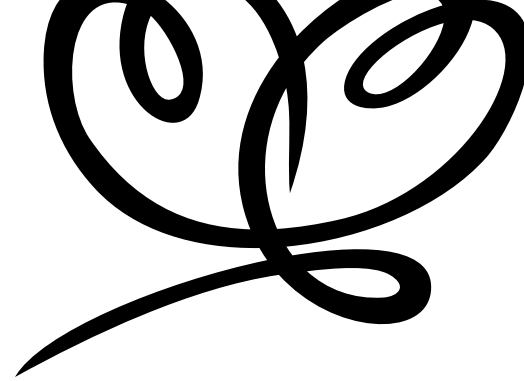
3. With the same spatula apply and extend the mask on the face within about 4 minutes, before it starts to set. It is possible to cover eyes and lips.

4. Leave the mask on to act for 15 to 20 minutes.

5. Remove the mask in one piece.



CASMARA  
Prestige



## ORIGINAL ALGAE PEEL-OFF FACIAL MASK

#### WHAT MAKES THEM UNIQUE?

##### 1. THE PEEL-OFF SYSTEM.

They are removed in one piece.

##### 2. NO NEED TO RINSE AFTER APPLICATION.

After removing the mask the skin is perfect, without traces of the mask and no need to rinse.

##### 3. FORMULA: POWDER + GEL.

The mask consists of 2 phases, powder and gel. Enriched gel with active ingredients providing the mask with extraordinary properties in comparison with others available on the market which require water.

##### 4. FACELIFT EFFECT.

Lowers the temperature of your skin by up to 6°C, providing a draining effect reducing puffiness and dark circles under the eyes, soothing and toning.

##### 5. DEEP MOISTURIZATION.

Formulated with seaweed extract, a powerful natural moisturizer.

##### 6. IMMEDIATE VISIBLE RESULTS.

After the mask is removed the face is visibly firmer, revitalized and rejuvenated.

##### 7. THEY ACT WHERE OTHERS FAIL TO REACH.

CASMARA facial masks are made to cover the face and neck as a whole. They adapt perfectly to treat the most delicate parts of the face, including the eyes and lips.



#### WHAT EFFECTS DO THEY HAVE ON THE FACE?

##### 1. FOREHEAD WRINKLES.

Improve and attenuate forehead wrinkles, improving elasticity and the micro-contour of the skin.

##### 2. FACIAL FLACCIDITY.

The pleasant and soothing cooling sensation on the face and neck has a tightening and firming effect by producing facial-muscle gymnastics. Redefining the facial contour.

##### 3. PUFFINESS UNDER THE EYES.

Given that you are able to completely cover the eye area combined with the light pressure it applies and cooling effect, the mask provides lymphatic drainage and anti-edema effects. It prevents fluid retention and reduces puffiness under the eyes.

##### 4. NASOLABIAL FOLDS.

The masks fit perfectly on the face and neck, working on the areas that need it most. The wrinkles or nasolabial folds become less pronounced due to tightening effect on the area.

##### 5. PERIORCULAR WRINKLES AND LIP LINES.

Acts on the most sensitive areas of the face: the periorcular and lip contour areas. The mask acts in depth on these two areas, eliminating wrinkles and softening folds.

##### 6. NECK WRINKLES.

The toning effect of the mask and its perfect adaptation to this delicate area makes wrinkles disappear or reduce in depth.



CASMARA

Unique and Pioneer.  
In the best Beauty Center & Spas.

CASMARA COSMETICS S.A.  
High Quality Professional  
Dermocosmetic Laboratory

C/ Ciutat de Liria, nº 29 y 31  
Pol. ind. Fuente del Jarro  
46988 - PATERNA (VALENCIA) SPAIN  
Tel. (+34) 961 501 999  
www.casmara.com  
casmara@casmara.es

CASMARA COSMETICS Corp  
High Quality Professional  
Dermocosmetic Laboratory

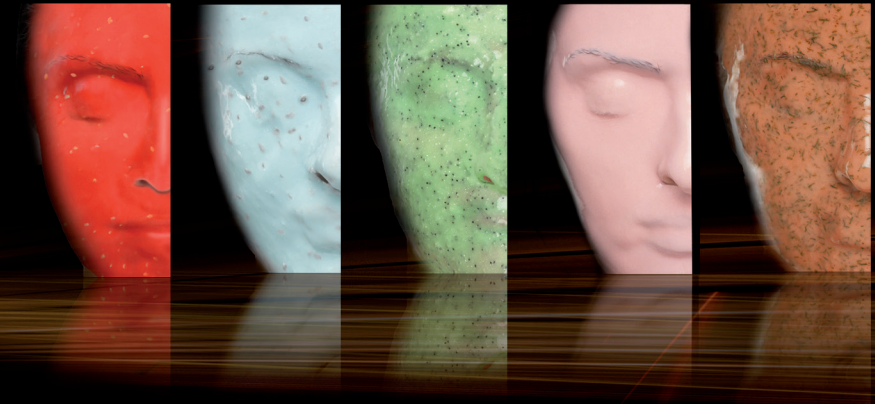
N. W. 70th Avenue  
Miami, FL 33122 (USA)  
Phone: 786 401 1990  
www.casmara.com  
admin@casmara.com

Follow us: f t

Cod. AXCMASKI



CASMARA  
Cosmetics without limits



## INVENTOR OF ORIGINAL ALGAE PEEL-OFF FACIAL MASK

Since 1979

