



Parts List

Ride-On Centri A1B Spreader Sprayer

DOCUMENT ID: C012T



MODEL

Model# ROC (CENTRI) 60 A1B

Serial # _____

FOR TECHNICAL SUPPORT

Direct all inquiries to:

**Perma Green Supreme, Inc.
5609 Murvihill Rd
Valparaiso, IN 46383-8324
info@ride-onspreader.com**

For additional instructions please call 800.346.2001, or your local distributor (below)

TABLE OF CONTENTS

Engine Components.....	3
Transmission.....	3
Brake Assembly.....	4
Rear tire/rim/hub.....	4
Handle Bar Assembly.....	5
Shift Rod Linkage.....	5
Clutch Assembly.....	6
PTO.....	6
Squeeze 'n' Spray Bottle.....	7
Nozzle Assemblies.....	7
Plumbing.....	8
Articulating Joint Components.....	8
Hopper.....	9

INTRODUCTION

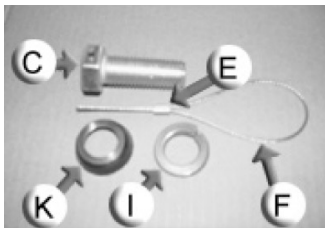
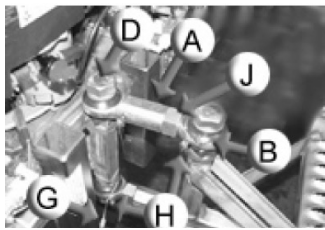
This manual contains information on replacement parts for the Ride-On® Centri Spreader Sprayer. To place orders or for technical support, please call Perma Green Supreme, Inc. at 800.346.2001 or your local distributor (on page 1).

All information in this publication is based on the latest product information available at the time of printing. Perma Green Supreme, Inc. reserves the right to make changes without notice and without obligation.

This manual should be considered a permanent part of the machine. Record the serial number for ordering parts and when making technical or warranty inquiries.

ARTICULATING JOINT COMPONENTS

#	Description	PGS #	Alt #	Qty
A	Rod end, 3/4" female	R652462	480231	1
B	Rod end, 3/4" male	R652472	480232	2
C	Bolt, 3/4" with hole	R650952	480233	1
D	Bolt, 3/4"	R650950	480234	2
E	Safety cable clamp	R654052	480235	1
F	Safety cable	R654050	480236	1
G	Grease fitting, female rod end	R652476	480237	1
H	Grease fitting, male rod end	R652474	480238	2
I	Lock washer, 3/4"	R651485	480239	3
J	Nut, 3/4"	R651100	480240	2
K	Seal, 3/4"	R652478	082477	3

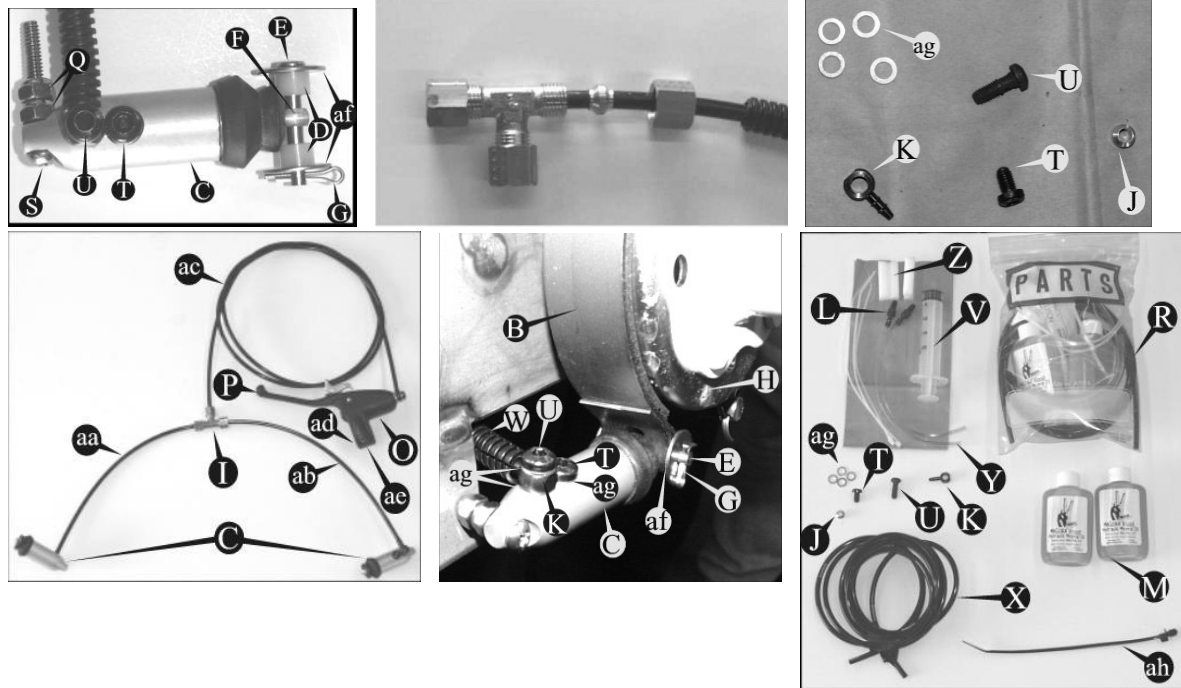


Brake Assembly

#	Description	PGS #	Alt #	Qty
A	Brake assembly (complete)	R422051	480241	1
B	Brake band	R422055	480242	2
C	Brake cylinder	R654512	480222	2
D	Bushing (brake)	R651970	480243	4
E	Clevis pin, connecting rod	R651740	480244	2
F	Connecting rod (brake)	R654512.01	480245	2
G	Cotter pin (connecting rod)	R651601	480246	2
H	Drum	R654720.03	480247	2
I	Tee, brake line	R654527	480248	1
J	Ferrule, tee	R654527.01	480249	3
K	Fitting, tubing barb elbow	R654513	480250	3
L	Fitting, tubing barb straight	R654515	480251	2
M	Brake fluid, 2 oz.	R654517	480252	2
N	Brake fluid, 1 qt.	R654526	480253	
O	Master cylinder (complete)	R654511	480254	1
P	Master cylinder (lever only)	R654511.01	480255	1
Q	Lock nut, 10-24	R651206	070027	6
R	Repair kit, brake	R654422	480200	
S	Screw, 10-24 x 1 1/2"	R650403	480447	2
T	Screw (bleed plug)	R654519	480256	2
U	Screw (tubing barb)	R654509	480257	3
V	Syringe	R654518	480258	1
W	Tubing cover	R347052	480259	8.3 ft
X	Brake tubing	R654528	480260	2.5 m
Y	Tubing, clear fill/bleed	R654524	480261	2
Z	Tubing (clamp)	R654516	480262	1
aa	Brake line, 11" left	R422054		1
ab	Brake line, 10" right	R422053		1
ac	Brake line, 73"	R422052		1
ad	Screw (mater cylinder)	R654511.02		1
ae	Clamp (master cylinder)	R654511.03		1
af	Washer (brake rod)	R651450	480263	4
ag	Washer (sealing)	R654521	480264	12

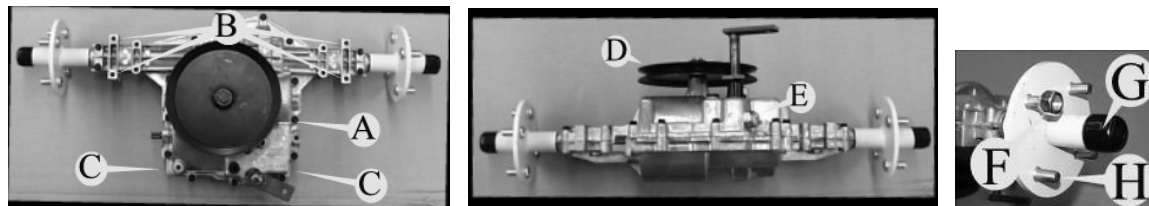
BRAKE ASSEMBLY REFERENCE IMAGES ON PAGE 5

Brake Assembly (continued)



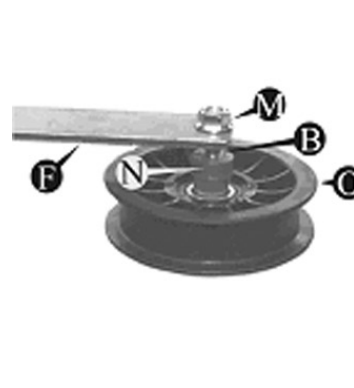
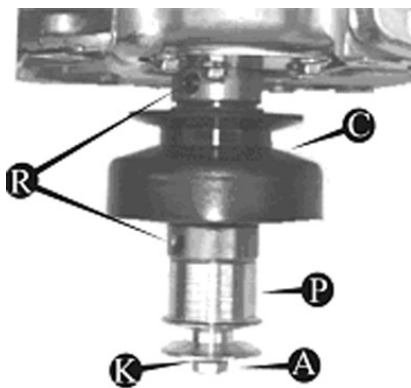
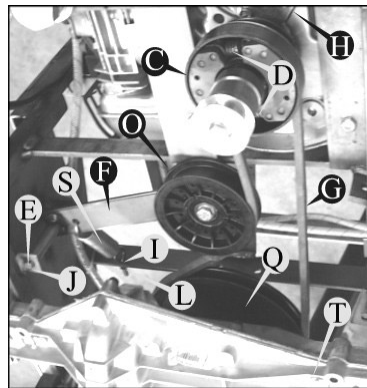
Transmission

#	Description	PGS #	Alt #	Qty
A	Transmission assembly (complete)	R216500.2	480315	1
B	Bolts, 5/16-18 x 3 1/4"	R650690	480439	4
C	Bolt, self tapping 5/16-18 x 5/8"	R650100	480440	2
D	Pulley	R653590		1
E	Transmission neutral switch	R216501		1
F	Lug nut	R651404	480407	8
G	Rubber cap	R654250	480316	2
H	Stud	R654670.1		8



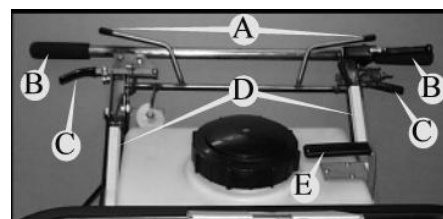
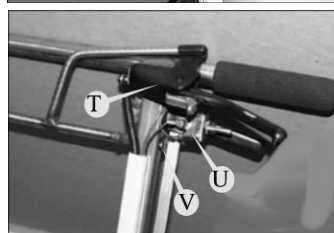
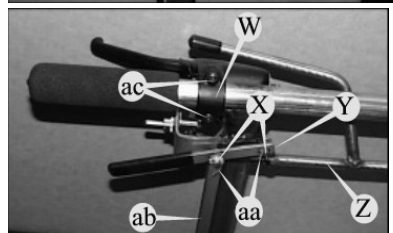
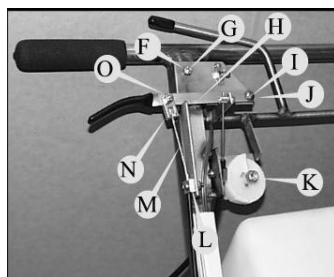
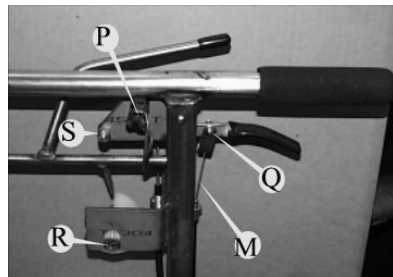
Clutch Assembly

#	Description	PGS #	Alt #	Qty
A	Bolt, 3/8"-24 x 2 1/2"	R650120	480431	1
B	Bolt, 3/8"-16 x 1 3/4"	R650738	008495	1
C	Centrifugal clutch	R653648	480271	1
D	Centrifugal clutch spring	R653647	480272	2
E	Clevis pin, 3/8" x 4"	R651770	480435	1
F	Clutch arm	R653649	480274	1
G	Drive belt	R653674	480205	1
H	Engine (Robin Subaru)	R449050	480301	1
I	Eyebolt	R422303	480376	1
J	Hair pin 3/8"	R651570	021956	1
K	Lock washer, 3/8"	R651483	480442	2
L	Nut, 1/4"-20	R651220		1
M	Flange nut, 3/8"	R651382		1
N	Bushing (idler pulley)	R653558	480203	1
O	Idler pulley	R653559	480204	1
P	Pulley (lower engine)	R653641	480299	1
Q	Pulley (transmission)	R653590		1
R	Shaft collar, 25 mm	R652370	480273	2
S	Spring (clutch arm)	R654502	480275	1
T	Transmission (complete)	R216500.2	480315	1



Controls

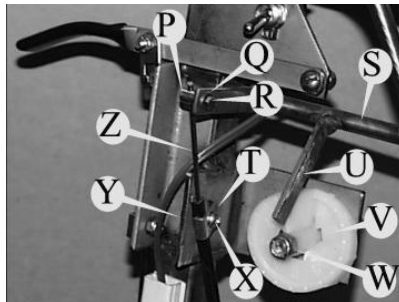
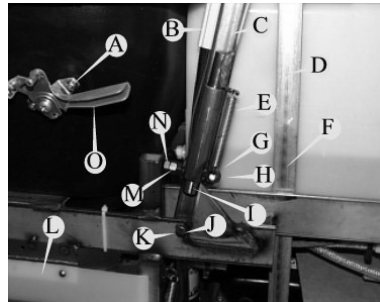
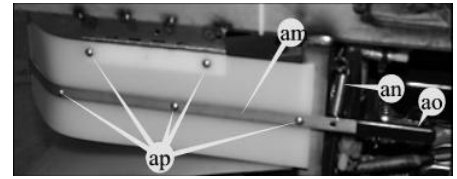
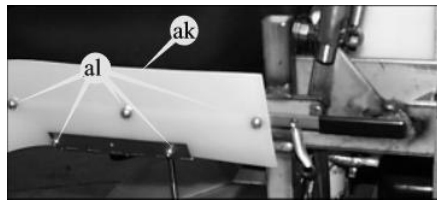
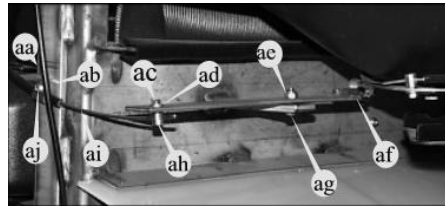
#	Description	PGS #	Alt #	Qty
A	Round grip, 3/8"	654238		2
B	Hand grips (foam)	654190	480328	1 pair
C	Flat grips	654199	480327	3
D	Wire raceway	422652	480332	2
E	Shift lever grip	654198	480337	1
F	Lock nut, 10-24	651206	070027	1
G	Screw, 10-24 x 1 1/2"	650403	480447	1
H	Throttle Lever	422551		1
I	Screw, 1/4-20 x 3/4"	650420	480446	1
J	Nylon Washer	651544	480429	2
K	Lock nut, 5/16-18	651214	480441	1
L	Cable clamp	654138	480374	1
M	Throttle Cable	654134.01	480208	1
N	Clevis (throttle cable)	654134.02	480313	1
O	Screw, 10-24 x 3/4"	650400	480448	1
P	Kill Switch	344336	480323	1
Q	Lock nut, 10-24	651206	070027	1
R	Crew, 5/16-18 x 2 1/2"	650526	480444	1
S	Lock nut, 1/4-20	651216	013291	1
T	Brake (master cylinder)	654511	480254	1
U	Spray switch	344334	480227	1
V	Screw, 1/4-20 x 1 1/2"	650428	480445	1
W	Clamp (master cylinder)	654511.03		1
X	Clevis pin, 1/4" x 1/2"	651750	480434	1
Y	Handle release lever	422559	480335	1
Z	Fertilizer control lever	422558	480384	1
aa	Cotter pin	651601	480246	2
ab	Handle release latch	422560	480333	1
ac	Screw (master cylinder)	654511.02		2



Handle & Fertilizer Control

#	Description	PGS #	Alt #	Qty
A	Screw, 10-24 x 1/2"	R650399	030423	2
B	Tubing protector	R422652		
C	Handle bar	R422353	480329	1
D				
E	Spring	R654504	480334	
F	Shift lever	R422577	480336	0
G	Nut, 3/8-16	R651228	006131	2
H	Bolt, 3/8-16 x 1 1/4"	R650770	011444	6
I	Release latch	R422560	480333	2
J	Clevis pin 3/8" x 1 7/8"	R651765	480433	2
K	Hair pin 3/8"	R651570	021956	1
M	Nut, 3/8-16	R651228	006131	2
N	Bolt, 3/8-16 x 3/4"	R650718	001437	2
O	Cable (centering)	R432144	480375	1
P	Cable stop nut	R654148	480217	3
Q	Cable stop nut, washer	R651421	480219	6
R	Cable stop nut, screw	R650601	480218	1
S	Lever (handle bar)	R422558	480384	0
T	Cable clamp	R654138	480374	4
V	Rate dial	R432054.1	480380	0
W	Nut, lock 5/16-18	R651214	480441	2
X	Screw, 10-24 x 3/4"	R650400	480448	16
Y	Nut, lock 10-24	R651206	070027	1
Z	Hopper control cable	R654101	480220	1
aa	Nut, lock 10-24	R651206	070027	6
ab	Cable clamp	R654138	480374	4
ac	Cable stop nut, screw	R650601	480218	1
ad	Cable stop nut, washer	R651421	480219	6
ae	Nut, lock 10-24	R651206	070027	6
af	Hopper lever, lower	R422553	480385	0
ag	Screw, 10-24 x 3/4"	R650400	480448	16
ah	Cable stop nut	R654148	480217	3
ai	Deflector replacement, complete	R422715	480378	
aj	Screw, 10-24 x 3/4"	R650400	480448	16
ak	Deflector spring	R622029		
al	Nut, lock 10-24	R651206	070027	5
am	Deflector handle	R422570		1
an	Deflector spring	R654503	480379	3
ao	Flat grips (black)	R654199	480327	3
ap	Screw, 10-24 x 1/2"	R650399	030423	5

Handle & Fertilizer Control (continued)



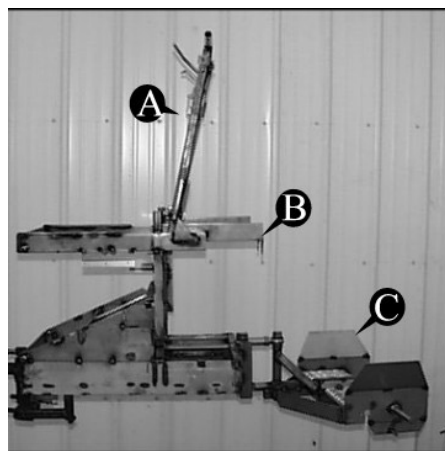
Shift Rod Linkage

#	Description	PGS #	Alt #	Qty
	Shift rod complete (with rod ends)	R422561	082467	1
A	Rod end	R652453	480338	2
B	Shift rod	R510004	480339	1
C	Lock nut, 5/16-24	R651218	082468	2



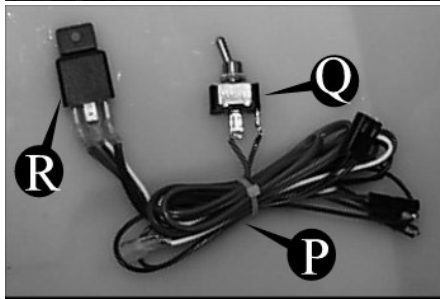
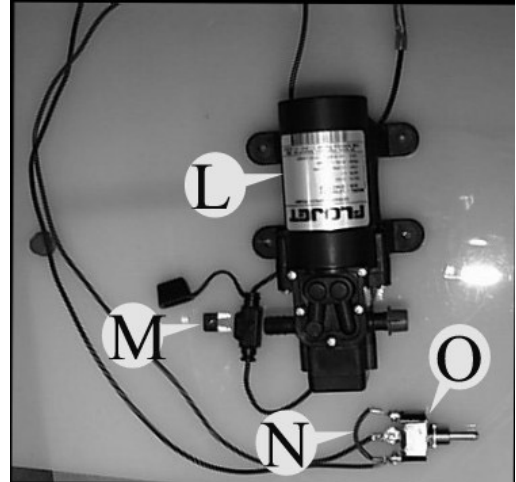
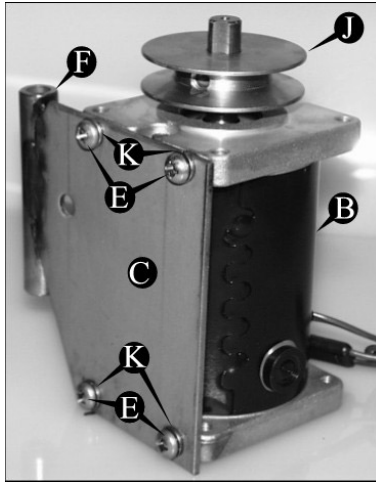
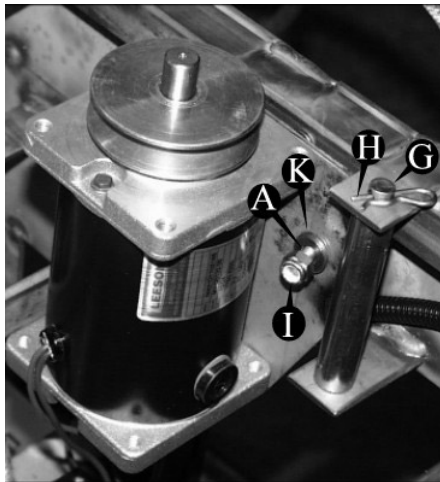
Frame

#	Description	PGS #	Alt #	Qty
A	Handle bar	R422353	480331	1
B	Main frame	R422351	480331	1
C	Sulky	R422352	480342	1



Electrical System

#	Description	PGS #	Alt #	Qty
A	Bolt, 1/4-2 x 2 1/4"	R650124	012629	1
B	Generator	R653742		1
C	Generator assembly	R653742.1	480320	1
D	Lock washer 1/4" ss	R651480	060058	4
E	Screw, 1/4-20 x 3/4"	R650420	480446	4
F	Bracket (generator)	R422555	480319	1
G	Clevis pin, 3/8" x 4"	R651770	480435	1
H	Hair pin, 3/8"	R651570	021956	1
I	Lock nut 1/4-20	R651216	013291	1
J	Pulley (generator)	R653638	480321	1
K	Washer, 1/4"	R651420	480345	1
L	Pump (Ride-On)	R442072	480228	1
M	Fuse, 7.5 amp mini	R342440		1
N	Jumper wire	R540016	480326	1
O	Switch (spray)	R344334	480227	1
P	Switch (kill)	R344336	480323	1
Q	Relay	R344360	480322	1



Engine

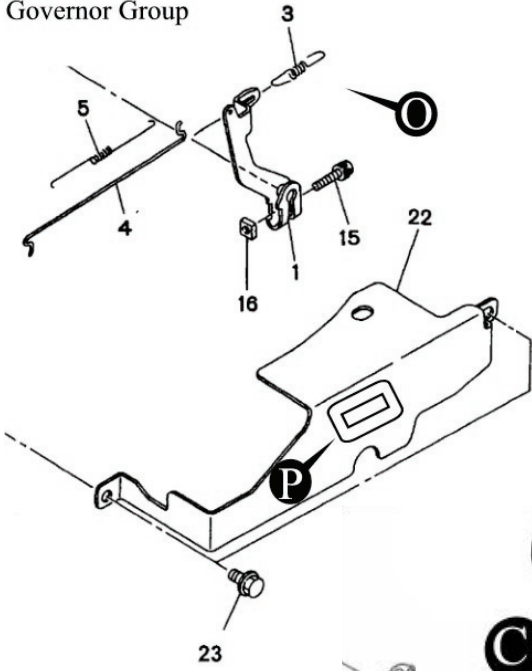
#	Description	PGS #	Alt #	Qty
	Engine	R449050		
	Engine complete with clutch, hour meter, and pulley	R422153		
A	Air filter	R449054	480201	1
B	Air filter case	R449072	480265	1
C	Air filter case packing	R449076	480266	1
D	Air filter cover	R449070		1
E	Wing bolt	R449073		
F	Blower housing	R449092	480267	1
G	Braket (fuel tank)	R449088	480268	1
H	Carburetor assembly	R449066	480269	1
I	Carburetor gasket (2) insulator	R449093	480270	1
J	Flywheel	R449069	480279	1
K	Fuel tank bracket (complete)	R449090	480280	1
L	Gas tank cap	R449058	480281	1
M	Oil filter bracket gasket	R449095	480293	1
N	Gasket (inner vent)	R449094	480283	1
O	Governor spring	R449056	480284	1
P	Hour meter	R654555	480285	1
Q	Ignition coil	R449068	480287	1
R	Manual (engine parts)	R449096	480224	1
S	Manual (engine repair)	R449098	480225	1
T	Oil dip stick	R449062	480289	1
U	Oil filler tube	R449064	480290	1
V	Oil filler tube o-ring	R449065	480291	1
W	Oil filter	R449052	480202	1
X	Oil filter bracket	R449063	480292	1
Y	Oil filter drain plug	R449059	480294	1
aa	Drain plug gasket	R449060	480295	1
ab	Oil seal	R449080	480296	1
ac	Spark plug	R449067	480302	1
ae	Starter assembly (complete)	R449057	480226	1
af	Friction spring	R449057.06	480303	1
ag	Starter knob	R449057.03	480304	1
ah	Starter pulley	R449057.09	480305	1
ai	Ratchet	R449057.05	480306	2
aj	Ratchet guide	R449057.07	480307	2
ak	Ratchet return spring	R449057.04	480308	2
al	Reel	R449057.01	480309	1
am	Rope	R449057.02	480310	1
an	Set screw	R449057.08	480311	1
ao	Spiral spring	R449057.10	480312	1
ap	Throttle return spring	R654282	480314	1

DOCUMENT ID: C012M

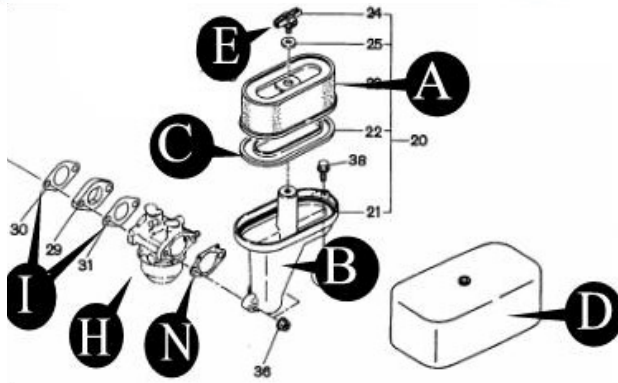
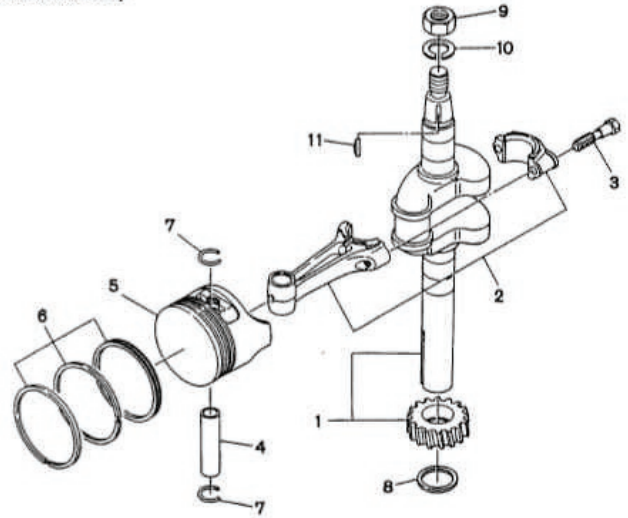
© 2004 Perma Green Supreme, Inc. All rights reserved.

Engine (continued)

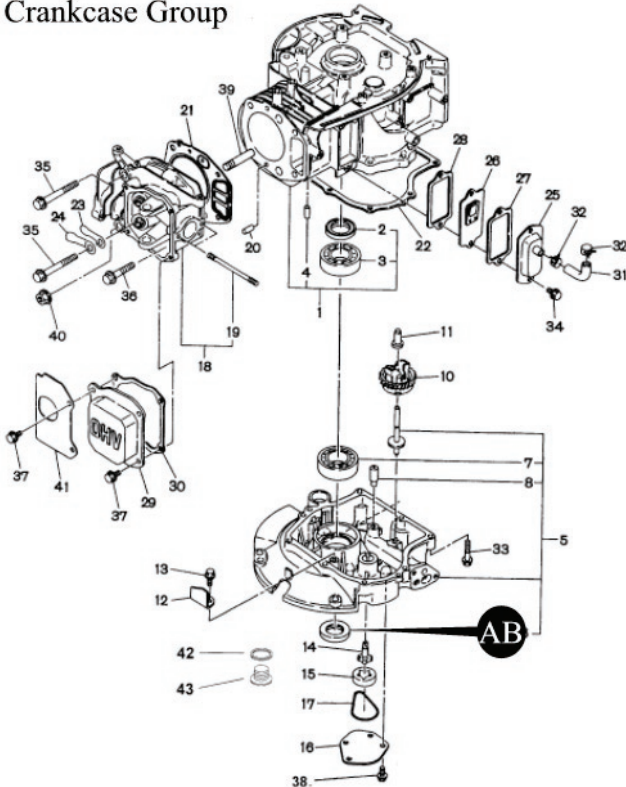
Governor Group



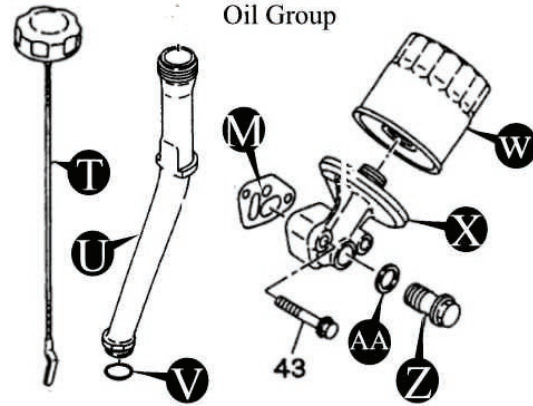
Crankshaft Group



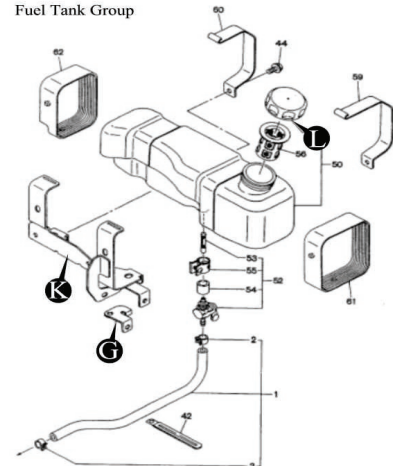
Crankcase Group



Oil Group



Fuel Tank Group



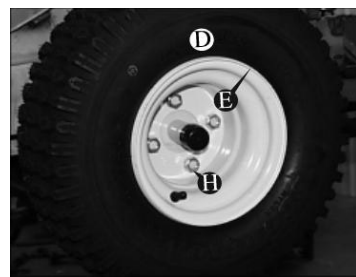
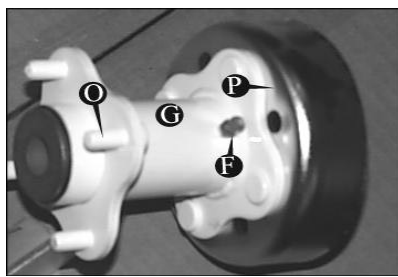
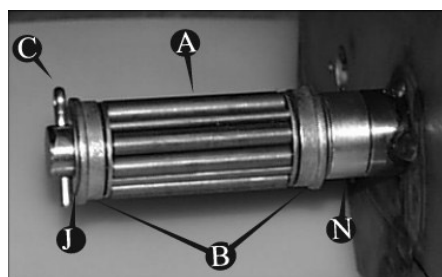
Tires, Rims, & Hubs (Model RO & ROC 60 A1A & A1B)

#	Description	PGS #	Alt #	Qty
A	Bearing (rear wheel 5/8")	R654720.01	480398	2
B	Bearing retainer (rear wheel 5/8")	R654720.02	480400	4
G	Hub & drum (rear 5/8" axle)	R654720	480405	2
J	Machine bushing, 5/8"	R651500	480409	4
N	Spacer, 5/8" collar	R652350		2

REFER TO IMAGES BELOW

Tires, Rims, & Hubs (Model B1B)

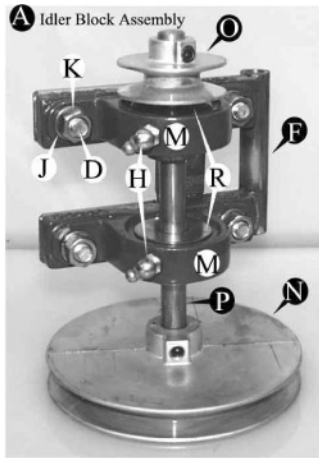
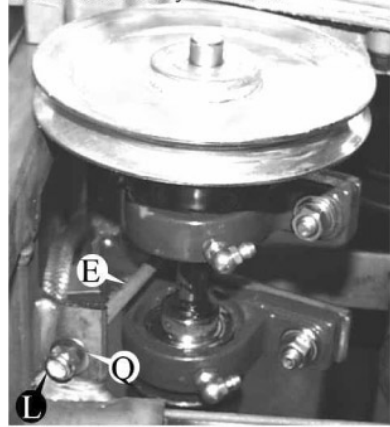
#	Description	PGS #	Alt #	Qty
A	Bearing (rear wheel 3/4")	R654722.01	480397	2
B	Bearing retainer (rear wheel 3/4")	R654722.02	480377	4
C	Cotter pin	R651600	480436	2
D	Front tire & rim (liquid filled)	R654824	480402	2
E	Front tire	R654822	480401	2
F	Grease fitting	R654720.06	480403	2
G	Hub & drum (rear 3/4" axle)	R654722	480404	2
H	Lug nut (front)	R651404	480407	8
I	Lug nut (rear)	R651400	480408	8
J	Machine bushing, 3/4"	R651510	480410	8
K	Rear tire inner tube	R654930	480411	2
L	Rear tire hub & rim (liquid filled)	R654637	480412	2
M	Rim (rear)	R654680	480413	2
N	Space, 3/4" collar	R652353	480411	2
O	Stud (rear hub)	R654720.05	480416	16
P	Drum	R654721		2



Pulleys & Belts

#	Description	PGS #	Alt #	Qty
A	Idler block assembly	R651961	480223	1
B	Belt (upper)	R653782	480207	
C	Belt (lower)	R653792	480206	
D	Bolt, 3/8-16 x 1 1/4"	R650770	011444	4
E	Bolt (idler tensioning)	R650128	480432	1
F	Bracket (idler assembly)	R651963		
H	Grease fitting	R651962.1		2
J	Lock washer, 3/8"	R651483	480442	4
K	Nut, 3/8-16	R651228	006131	4
L	Nut, lock 1/4-20	R651216	013291	
M	Pillow block	R651962	480297	
N	Pulley (lower)	R653643	480298	
O	Pulley (upper)	R653642	480300	
Q	Washer, 1/4"	R651420	480345	1
R	Seal	R651969		2

Idler Block Assembly on machine

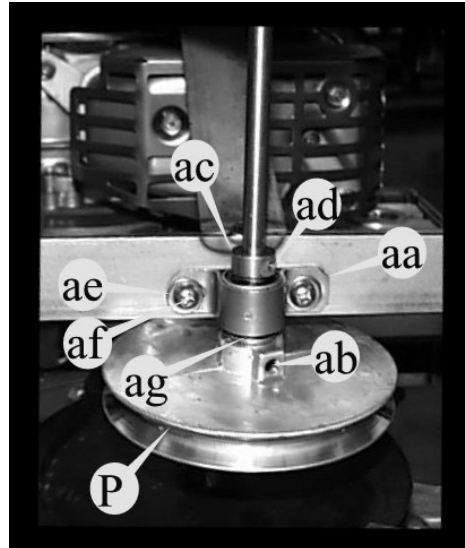
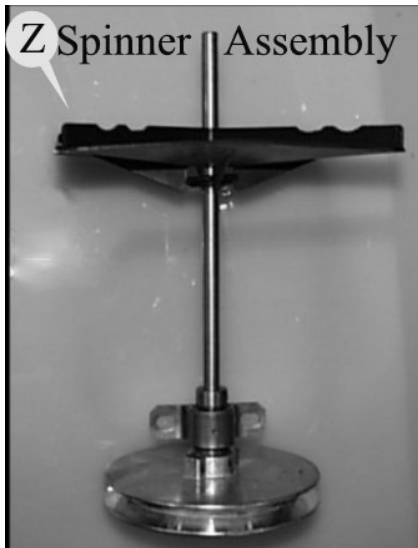
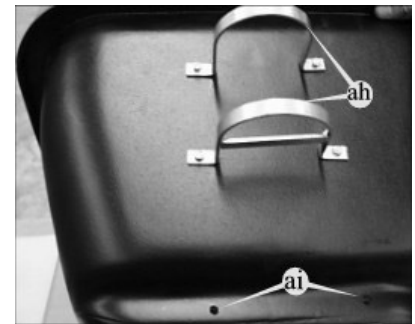
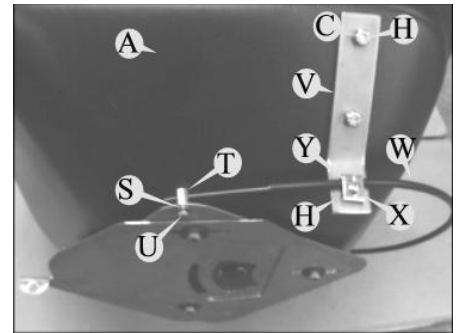
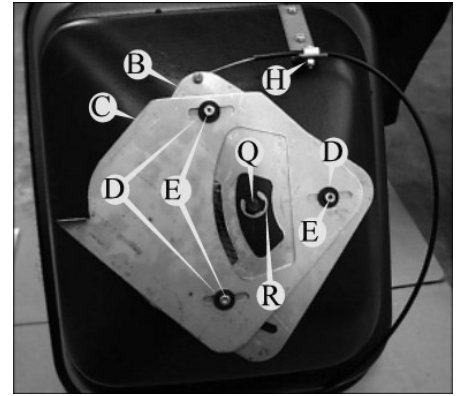
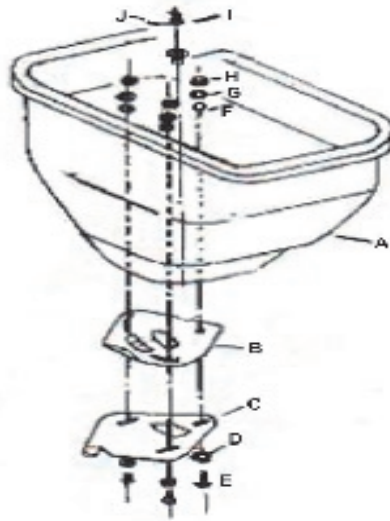


Spreader / Hopper

#	Description	PGS #	Alt #	Qty
A	Hopper	R422700	480383	1
B	Directional shutter plate	R422708	480392	1
C	Flow control plate	R422709	480382	1
D	Nylon washer	R422406	480395	3
E	Screw	R422302	480373	3
F	O-ring	R422707	480386	3
G	Nylon washer	R422706	480395	3
H	Lock nut	R651206	070027	6
I	Cotter pin	R651590	480377	1
J	Agitator spring	R422703	480215	1
K	Shower cover	R432301	480229	1
L	Platter	R422710	480221	1
M	Fan driver	R422711	480393	1
N	Fan driver lock clip	R422712	480381	1
O	Shaft	R422702	480391	1
P	Pulley	R653644	480387	1
Q	Hopper bearing	R422704	480216	1
R	Hopper bearing clip	R422705	480371	1
S	Washer	R651421	480219	1
T	Swivel nut	R654148	480217	1
U	Bolt, 8-32 x 3/8"	R650601	480218	1
V	Direction cable bracket	R422556	480376	1
W	Directional shutter plate lever	R432144	480375	1
X	Cable clamps	R654138	480374	1
Y	Screw 10-24 x 3/4"	R650400	480448	3
Z	Spinner assembly (complete)	R422713	480230	1
aa	Lower bearing	R652220	480372	1
ab	Set screw, 5/16-18 x 1/2"	R650222		1
ac	Shaft collar	R652330	480390	1
ad	Set screw, 1/4-20 x 1/2"	R650221		
ae	Washer, 1/4"	R651420	480345	2
af	Screw, 1/4-20 x 3/4"	R650420	480446	2
ag	Washer, 3/8"	R651483	480442	2
ah	Brackets (Squeeze 'n' Spray)	R372039		1
ai	Hopper plugs			
aj	Screen	R422701	480389	

SPREADER/HOPPER IMAGES ON PAGE 16

Spreader / Hopper (continued)



Sprayer (Model ROC 60 A1B & B1B)

#	Description	PGS #	Alt #	Qty
A	Pump assembly	R442072	480228	1
B	Fuse 7.5 amp	R342440		1
C	Switch (jumper)	R540016	480326	1
D	Spray switch	R344334	480227	1
E	Screw, 10-24 x 3/4"	R650400	480448	4
F	Splash guard	R422654	480340	1
G	Valve (3-way)	R480022	480369	2
H	Upper nozzle hose, 1/4" ID x 54"	R422603	480421	2
I	Lower nozzle hose, 1/4" ID x 46"	R422604	480419	2
J	Valve hose, 1/4" ID x 7 1/2"	R422609	480422	2
K	Manifold	R422612	480423	1
L	Serial number			
M	Hose clamp, 3/8" hose #38	R481243	480356	2
N	Hose 3/8" ID x 7"	R422611	480423	1
O	Suction hose assembly	R422613		1
P	Hose clamp, 1/4" ID hose #36	R481246	480354	12
Q	Valve (single)	R480020	480370	1
R	Fitting, 1/4" MPT x 1/4" HB L	R454002	480348	
S	Fitting, 1/4" FPT x 1/4" HB	R454002	480346	1
T	Fitting, 1/4" MPT x 1/4" HB	R452220	480347	2
U	Fitting, 1/4" T	R476022	480352	3
V	Valve (single)	R480020	480370	1
W	Fitting, 1/4" MPT close	R474022	480353	1
Y	Fitting, 1/4" MPT x 3/8" HB L	R454023	480350	1
aa	Lower nozzle hose, 1/4" ID x 46"	R422609	480422	2
ab	Hose clamp, 1/4" HB #26	R481246	480354	2
ac	Fitting, 1/4" FPT x 1/4" HB	R454002	480346	2
ad	Lower nozzle body assembly	R422602.1	082461	2
ae	Upper nozzle hose 1/4" ID x 54"	R422603	480421	2
af	Hose clamp, 1/4" hose #26	R481246	480354	2
ag	Upper nozzle assembly	R422601.1	082460	2

REFER TO SPRAYER IMAGES ON PAGE 19

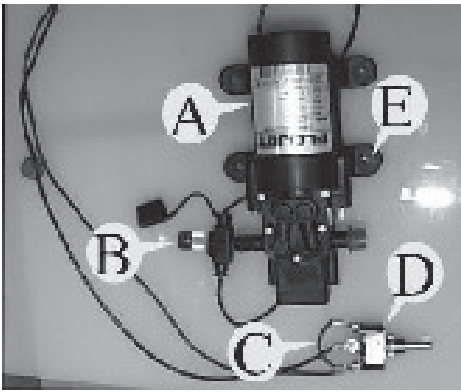
Nozzle Parts (RO & ROC 60 A1A) SUPER LOW VOLUME: 16oz./1,000 sq.ft.

#	Description	PGS #	Alt #	Qty
A	Lower nozzle assembly (green venturi)	R422602		2
B	Upper nozzle assembly (purple venturi)	R422601		2
C	Pressure cap, 10 PSI	R466443		4
F	Nozzle body, 10 PSI	R466441	480360	4
I	Nozzle, Turbo Floodjet 2.5 (brown)	R466642		2
J	Nozzle, Floodjet 1.5 (silver)	R466630		2
	Venturi & gasket (green)	R465153		2
	Venturi & gasket (purple)	R465159		2
REFER TO SPRAYER IMAGES ON PAGE 19				

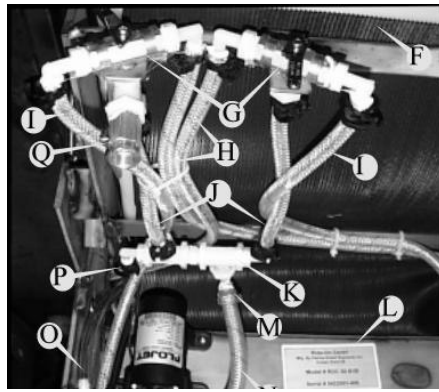
Nozzle Parts (ROC 60 A1B & B1B) REDUCED LOW VOLUME: 27 oz./1,000 sq.ft.

#	Description	PGS #	Alt #	Qty
A	Lower nozzle assembly (A1B & B1B)	R422602.1	082460	2
B	Upper nozzle assembly (A1B & B1B)	R422601.1	082461	2
C	Pressure cap, 8 PSI	R466444	480357	4
D	Rubber cap	R654250	480316	2
E	Diaphragm	R466448	480358	5
F	Nozzle body (complete with E & C)	R466222	010923	4
G	Strainer, 50 mesh	R464724	480214	4
H	Gasket	R466620	480359	4
I	Grey nozzle TFVS3	R466639	480212	2
J	Red nozzle TFVS2	R465222	480213	2
K	Nozzle cap (white)	R466625	480211	2
L	Nozzle cap (red)	R466622	480210	2
M	Squeeze 'n' Spray bottle	R372034	480365	1
N	Nozzle cap	R467010	480364	1
O	Green nozzle, XR110015	R465124	480362	1
P	Strainer, 50 mesh	R464724	480214	1
Q	Nut			
R	Cap			
S	O-ring	372035.02		
T	Nozzle body	R467012	480363	
U	16 oz. bottle			
REFER TO SPRAYER IMAGES ON PAGE 19				

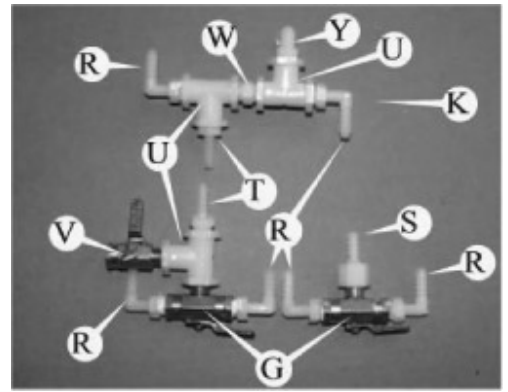
Sprayer / Nozzles (continued)



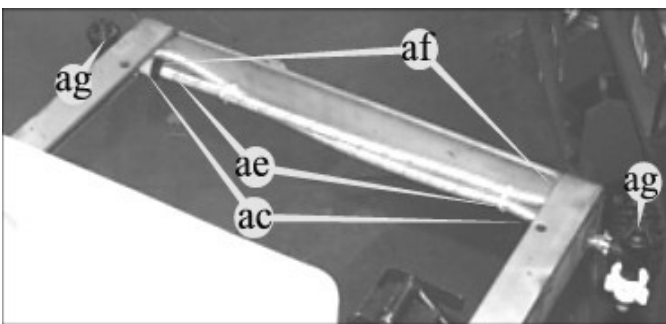
Pump



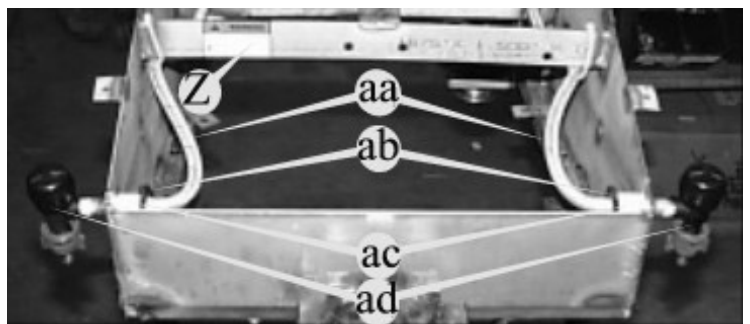
Hoses



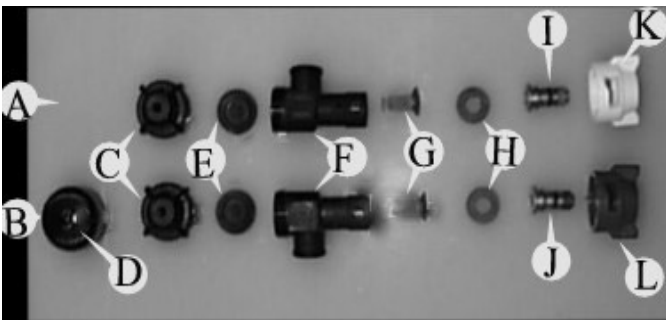
Manifolds



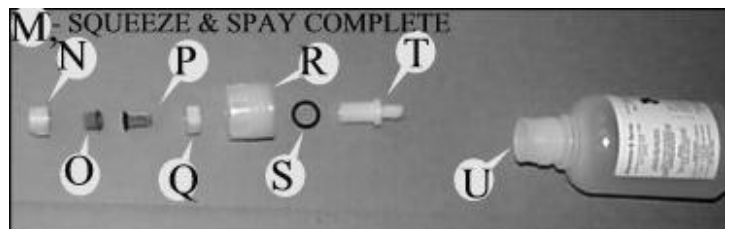
Upper hoses



Lower hoses



Nozzles



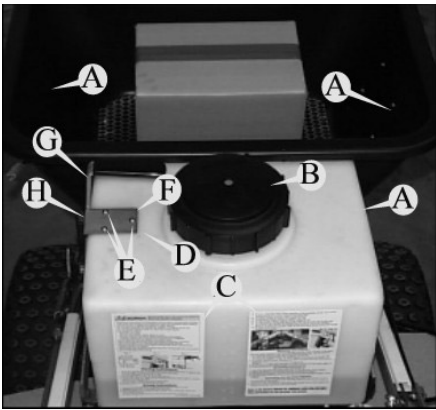
Squeeze 'n' Spray

Tank (ROC 60 A1A)

#	Description	PGS #	Alt #	Qty
K	Unloader valve, 20 PSI	R466440		1
P	Pressure cap, 20 PSI	R466442		1
REFER TO TANK IMAGES ON PAGE 21				

Tank (ROC 60 A1B & B1B)

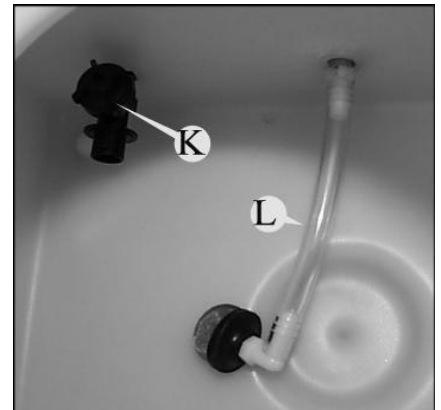
#	Description	PGS #	Alt #	Qty
	Tank assembly (with fittings & hose)	R422606		1
A	Tank	R204945	480367	1
B	Lid	R204946	480368	1
C	Instruction label	R100100		1
D	Sealing washer (inside tank)	R651542	480343	3
E	Screw, 10-24 x 3/4"	R650400	480448	3
F	Lock nut, 10-24	R651206	070027	3
G	Shift lever	R422557	480336	1
H	Shift locator plate	R422552	480427	1
I	Fitting, 1/4" MPT x 3/8" HB L	R454023	480350	1
J	Fitting, 1/4" MPT x 3/8" HB L	R454022	480348	1
K	Unloader valve, 10 PSI	R466439	480361	1
L	Strainer assembly	R422605		1
M	Tank strainer	R451090	480366	1
N	Suction tube (in-tank)	R422609	480422	1
O	Fitting, 1/4" MPT x 3/8" HB	R452222	480349	1
P	Pressure cap, 10 PSI	R466443		1
Q	Diaphragm	R466448	480358	1
R	Suction tube, 19"	R422613.2	480417	1
S	Suction tube, 1 1/2"	R422613.1	480417	1
T	Hose clamp, 3/8" T #30	R481244	480355	1
U	Hose barb elbow, 3/8"	R456317	480351	1
REFER TO TANK IMAGES ON PAGE 21				



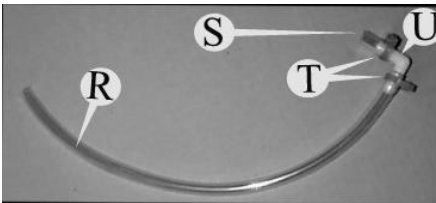
Tank



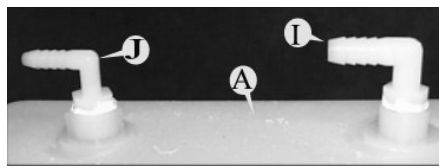
Tank, inside parts



Tank, inside fittings



Suction hose assembly



Tank, front fittings