



ATTICAT[®] PINK[®]

BLOWN-IN INSULATION

See CCMC Evaluation
Report No. 12851-L

R Value	R12	R16	R20	R24	R28	R32	R36	R40	R44	R48	R50	R52	R56	R60	R64	R68	R70	R72	R76	R80	
Blown Inches	4.5	6.0	7.4	8.9	10.4	11.9	13.3	14.6	16.0	17.4	18.0	18.8	20.1	21.5	22.9	24.2	24.9	25.6	26.9	28.5	
Coverage/Bag (ft²)	162.0	121.5	97.2	81.0	69.4	60.7	53.2	47.4	42.6	38.8	37.2	35.5	32.9	30.5	28.5	26.7	25.9	25.1	23.7	22.3	
Number of 30 lb/13.6 kg AttiCat[®] Bags Required																					
SQ. FT.	R12	R16	R20	R24	R28	R32	R36	R40	R44	R48	R50	R52	R56	R60	R64	R68	R70	R72	R76	R80	
500	3.1	4.1	5.1	6.2	7.2	8.2	9.4	10.6	11.7	12.9	13.4	14.1	15.2	16.4	17.6	18.7	19.3	19.9	21.1	22.4	
600	3.7	4.9	6.2	7.4	8.6	9.9	11.3	12.7	14.1	15.5	16.1	16.9	18.3	19.7	21.1	22.5	23.2	23.9	25.3	26.9	
700	4.3	5.8	7.2	8.6	10.1	11.5	13.2	14.8	16.4	18.1	18.8	19.7	21.3	22.9	24.6	26.2	27.0	27.9	29.5	31.4	
800	4.9	6.6	8.2	9.9	11.5	13.2	15.0	16.9	18.8	20.6	21.5	22.5	24.3	26.2	28.1	30.0	30.9	31.9	33.7	35.9	
900	5.6	7.4	9.3	11.1	13.0	14.8	16.9	19.0	21.1	23.2	24.2	25.3	27.4	29.5	31.6	33.7	34.7	35.8	37.9	40.4	
1000	6.2	8.2	10.3	12.3	14.4	16.5	18.8	21.1	23.4	25.8	26.9	28.1	30.4	32.8	35.1	37.4	38.6	39.8	42.1	44.8	
1100	6.8	9.1	11.3	13.6	15.8	18.1	20.7	23.2	25.8	28.4	29.5	31.0	33.5	36.1	38.7	41.2	42.5	43.8	46.3	49.3	
1200	7.4	9.9	12.3	14.8	17.3	19.8	22.6	25.3	28.1	30.9	32.2	33.8	36.5	39.3	42.2	44.9	46.3	47.8	50.5	53.8	
1300	8.0	10.7	13.4	16.0	18.7	21.4	24.4	27.5	30.5	33.5	34.9	36.6	39.6	42.6	45.7	48.7	50.2	51.8	54.8	58.3	
1400	8.6	11.5	14.4	17.3	20.2	23.1	26.3	29.6	32.8	36.1	37.6	39.4	42.6	45.9	49.2	52.4	54.0	55.7	59.0	62.8	
1500	9.3	12.3	15.4	18.5	21.6	24.7	28.2	31.7	35.2	38.7	40.3	42.2	45.6	49.2	52.7	56.2	57.9	59.7	63.2	67.3	
1600	9.9	13.2	16.5	19.8	23.0	26.4	30.1	33.8	37.5	41.3	43.0	45.0	48.7	52.5	56.2	59.9	61.8	63.7	67.4	71.7	
1700	10.5	14.0	17.5	21.0	24.5	28.0	32.0	35.9	39.9	43.8	45.7	47.8	51.7	55.7	59.8	63.7	65.6	67.7	71.6	76.2	
1800	11.1	14.8	18.5	22.2	25.9	29.7	33.8	38.0	42.2	46.4	48.4	50.7	54.8	59.0	63.3	67.4	69.5	71.7	75.8	80.7	
1900	11.7	15.6	19.5	23.5	27.4	31.3	35.7	40.1	44.6	49.0	51.0	53.5	57.8	62.3	66.8	71.2	73.3	75.7	80.0	85.2	
2000	12.3	16.5	20.6	24.7	28.8	33.0	37.6	42.2	46.9	51.6	53.7	56.3	60.9	65.6	70.3	74.9	77.2	79.6	84.2	89.7	

Note: Coverage chart values based on nominal weight of 30.0 lbs. and minimum net weight of 28.5 lbs.

FOR AN EASY PROCESS!

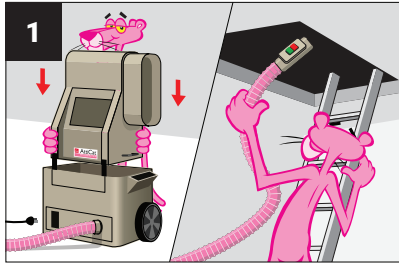
Though a one-person operation is possible, the process is generally easier and faster with two people – one operating the machine at the source, and another applying AttiCat® Insulation in the attic. This saves hassle and potentially multiple trips up and down a ladder.



AT THE MACHINE (PERSON #1)

Setup

Assemble machine. Run hose to attic.



Cut bags in half.



Use

Push half bag into machine.



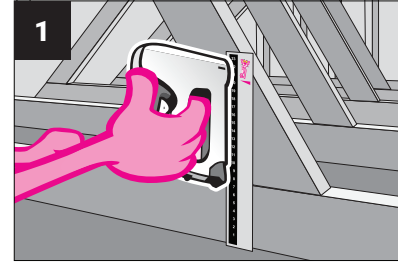
Removing packaging.



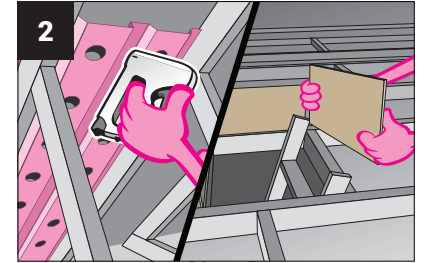
IN THE ATTIC (PERSON #2)

Setup

Install rulers.

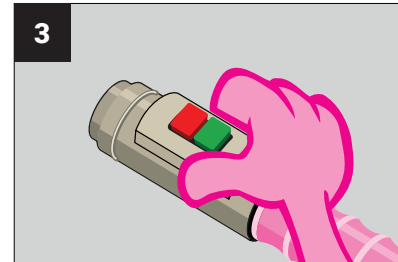


Install eaves baffles and rigid barrier.



Use

Push remote "START" button to start machine.



Blow insulation to desired depth.

