



AI meets PPM

The PMP® Exam Evolution: Comparing the 2021 and 2026 Standards

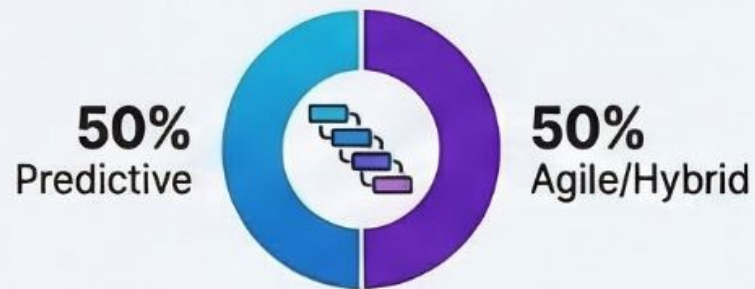
Comparing the Project Management Professional (PMP)® exam standards from January 2021 against the updated July 2026 requirements. Key changes include a massive increase in the **Business Environment** domain, a shift toward Agile/Hybrid methodologies, and an expanded 10-year window for professional experience.

2021 Exam

Domain Weights (2021)



Methodology Focus



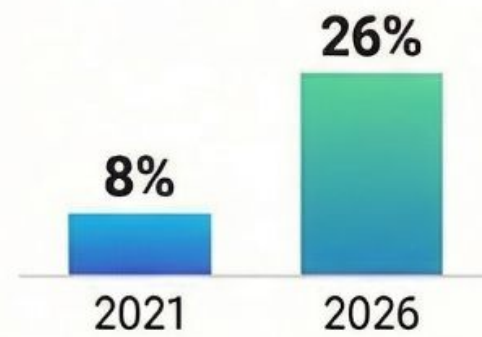
Candidate Eligibility

Experience Window:
Last 8 Years

Training:
35 Hours
(Waived for CAPM holders)

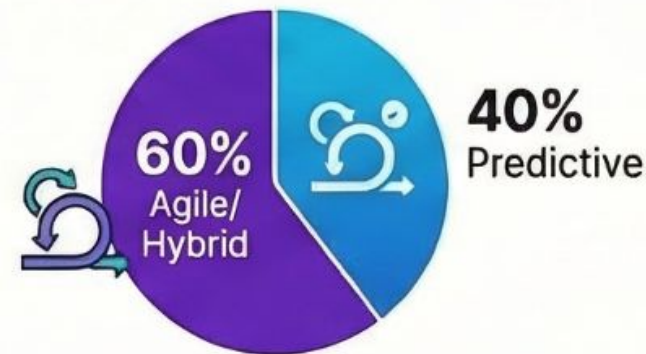
2026 Exam

The Evolving Exam Blueprint



Business Environment Weight Tripled
Grew from 8% in 2021 to 26% in 2026.

Shift Toward Agile and Hybrid
Agile/Hybrid approaches now represent 60% of exam items, up from 50% in 2021.



New Focus on AI and Sustainability

Explicitly incorporates emerging trends like Artificial intelligence and environmental sustainability.

Domain Weights (2026)



Candidate Eligibility & Logistics



Expanded 10-Year Experience Window

Candidates can now use project experience from the last 10 years, up from 8.



Exam Format: 180 Questions in 230 Minutes

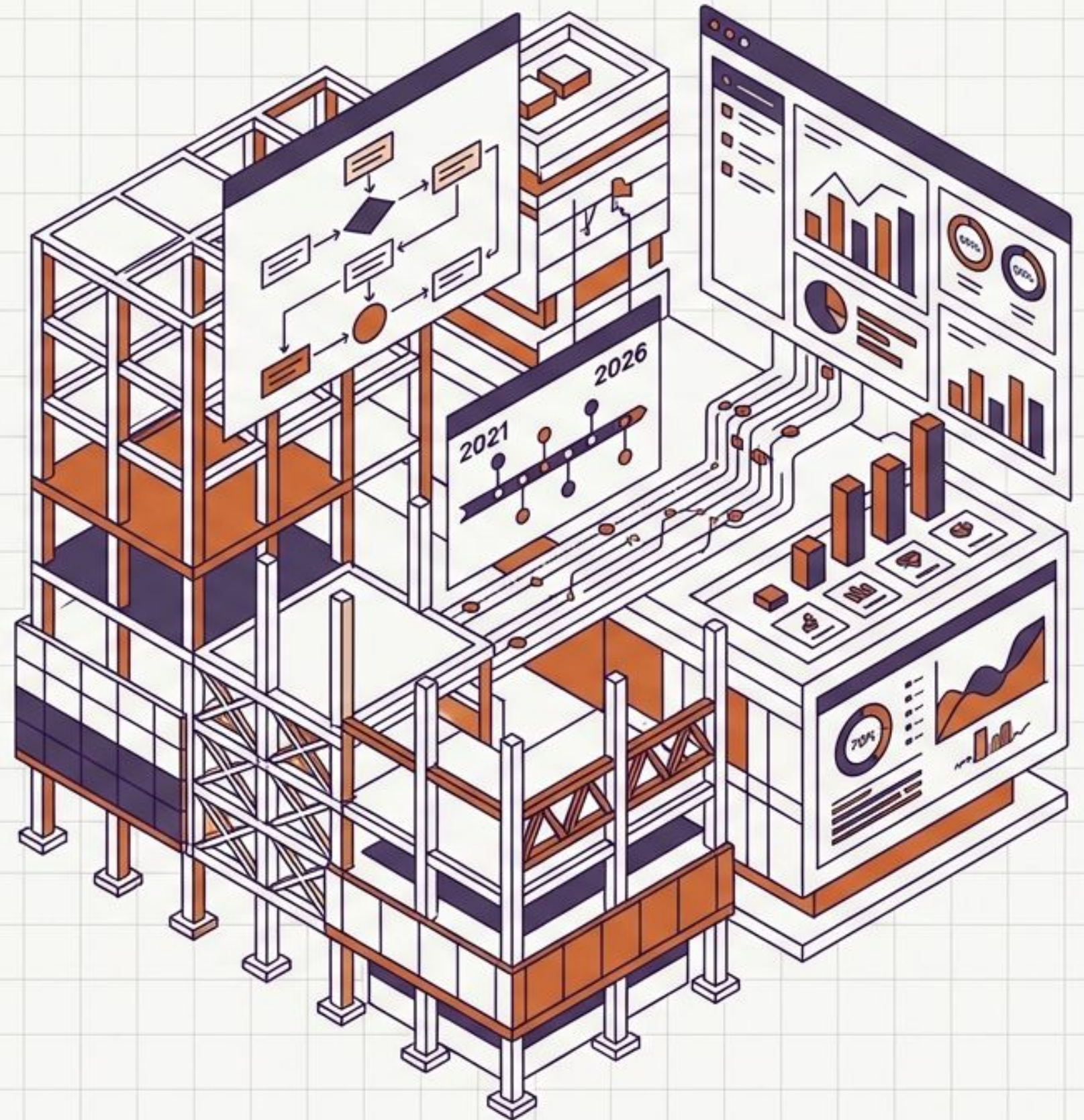
Includes two 10-minute breaks and 5 unscored pretest questions.



Training: 35 Hours
(Waived for CAPM holders)

Blueprint for the Modern Project Professional

An executive briefing on the evolution of the PMP® Examination Content Outline. Mapping the structural, philosophical, and methodological shifts from the 2021 baseline to the 2026 global standard.



Reframing the Metrics of Project Success


The 2026 PMP standard acknowledges that project management has moved beyond the traditional "Iron Triangle" of schedule, budget, and scope. The new exam incorporates emerging market forces previously unaddressed in the certification.



A gauge with a semi-circular arc. The left half is labeled "Task Execution" and the right half is labeled "Stakeholder Value". The needle is orange and points to the right, indicating a focus on stakeholder value.

Value Delivery


The definition of success now requires delivering value that is worth the effort and expense.



A gauge with a semi-circular arc. The arc is labeled "Automation & Tools". The needle is teal and points to the center of the arc.

Technological Integration

Explicit inclusion of Artificial Intelligence (AI), tracking how intelligent tools impact professional practice expectations.



A gauge with a semi-circular arc. The arc is labeled "Global Impact" and features a globe icon with a leaf. The needle is purple and points to the right side of the arc.

Global Impact

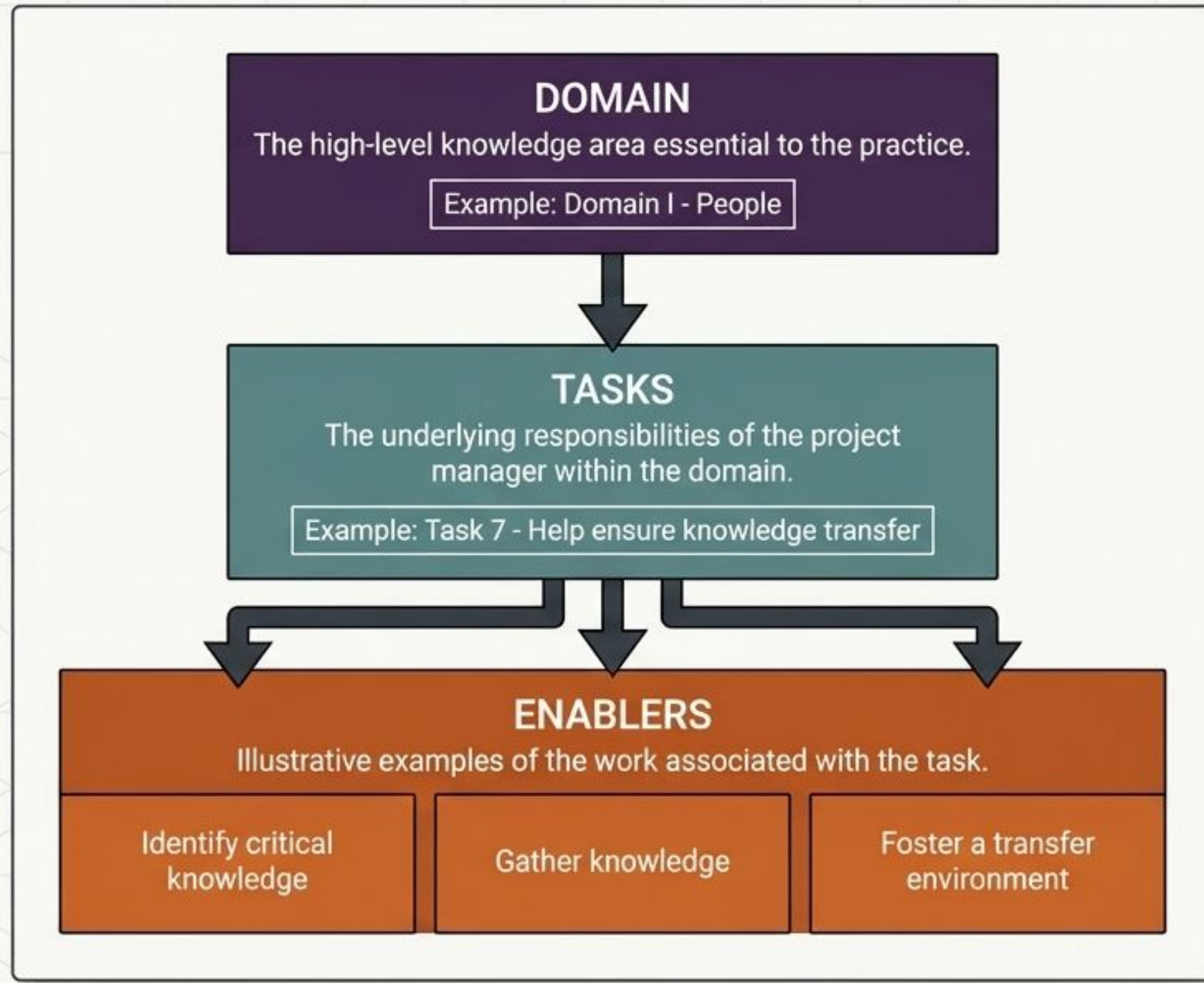
Embedding sustainability, environmental, and long-term viability considerations into daily project governance.

The PMP Evolution Matrix

Dimension	2021 Baseline	2026 Global Standard
Domain Weights	People (42%), Process (50%), Business Environment (8%)	People (33%), Process (41%), Business Environment (26%)
Development Approaches	50% Predictive / 50% Agile & Hybrid	40% Predictive / 60% Adaptive & Hybrid
Core Philosophy	Deliverables-focused execution	Value and outcomes-focused delivery
Emerging Topics	Traditional methodologies	Integration of AI and Sustainability
Training Requirements	35 Contact Hours	35 Commercial Training Hours (Strict quality/provider verification)

Deconstructing the Exam Architecture

The PMP assesses candidates through a criterion-referenced approach built on three structural pillars.



The Value Delivery Spectrum

Predictive, adaptive, and hybrid management approaches are found throughout all three domain areas and are not isolated to any particular task. However, the overall balance has shifted to reflect modern working environments.

2021 Exam Distribution

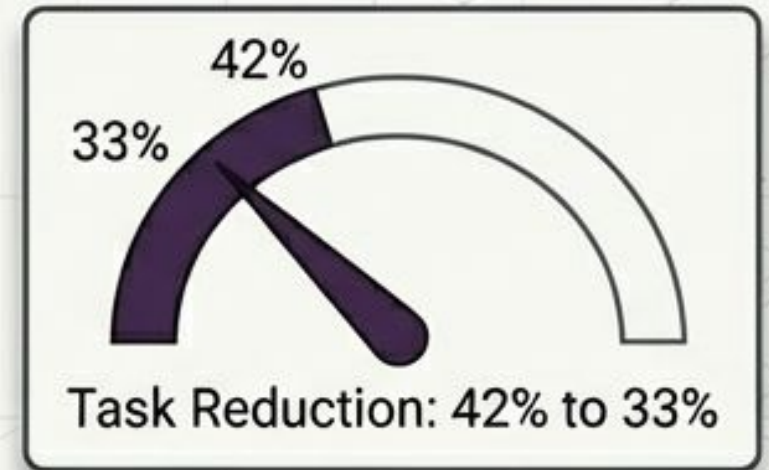


2026 Exam Distribution



Domain I: People

Streamlined from 14 tasks down to 8, the new People domain focuses intensely on aligning visions and expectations rather than just resolving immediate conflicts.



Vision & Leadership

Develop a common, shared vision. Lead the project team by establishing expectations and determining appropriate leadership styles.

Conflict & Alignment

Identify conflict sources and implement resolution strategies. Facilitate discussions to align stakeholder expectations.

Stakeholder Engagement

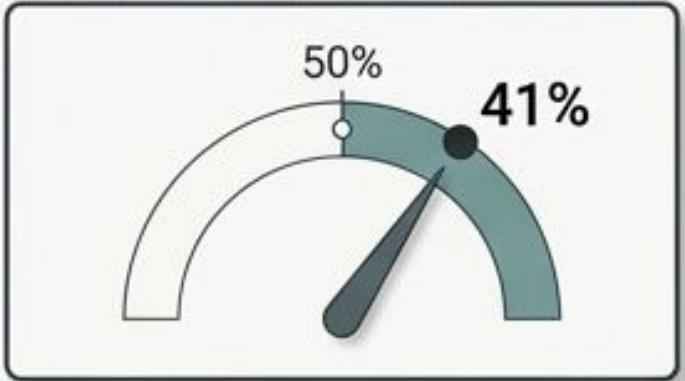
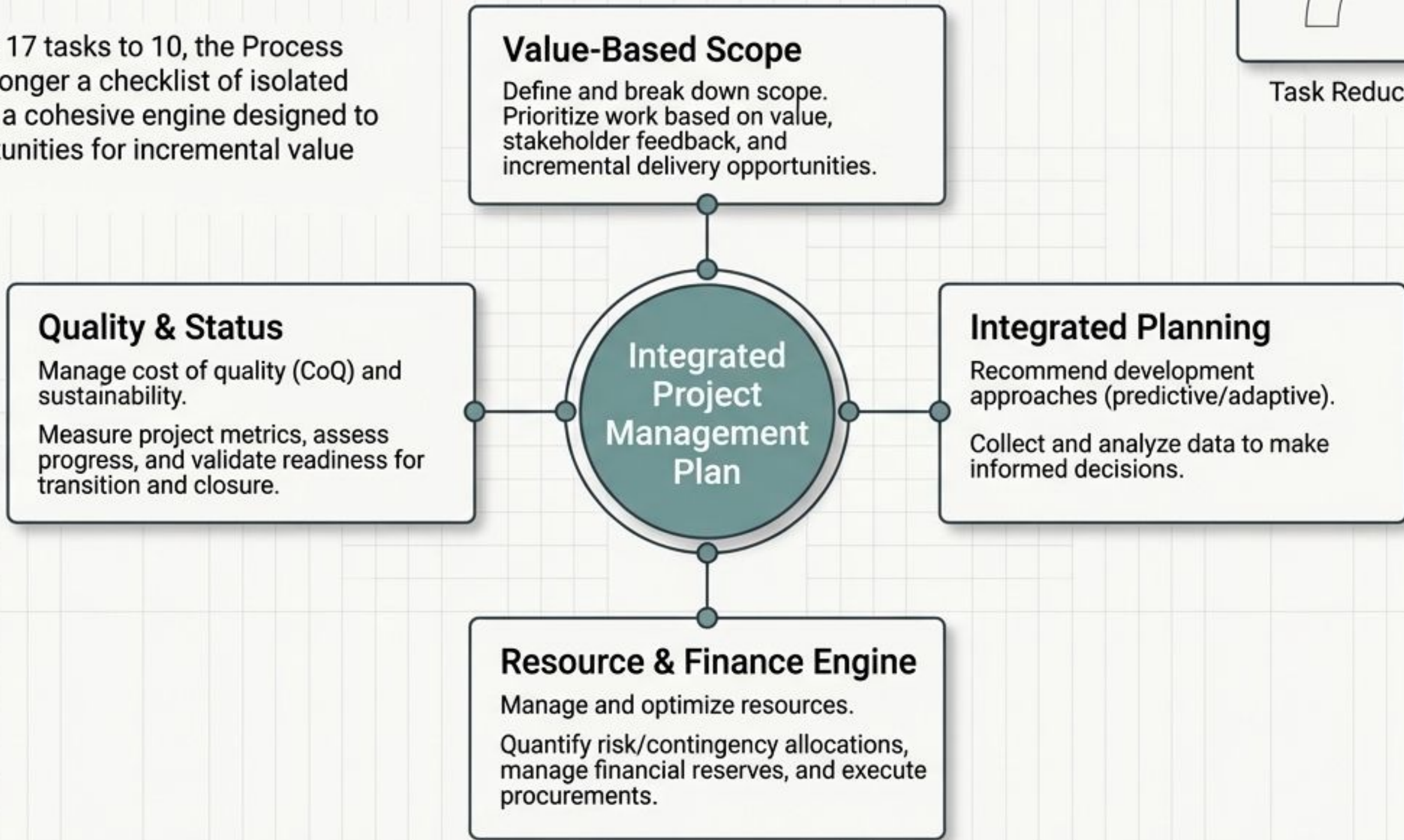
Analyze and tailor communication to stakeholder needs. Build trust and influence to accomplish objectives.

Knowledge & Expectations

Monitor internal and external customer satisfaction. Gather knowledge and foster an environment for knowledge transfer.

Domain II: Process

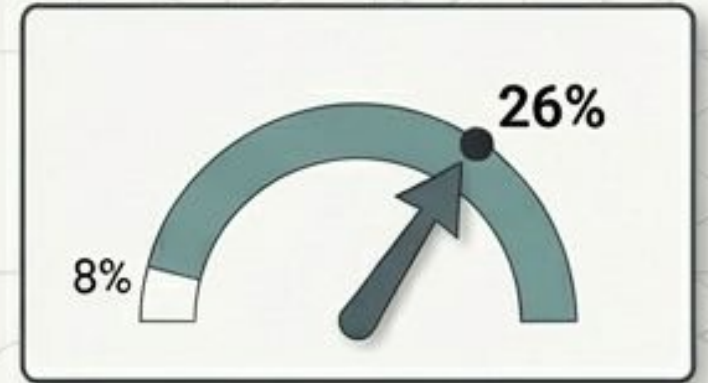
Reduced from 17 tasks to 10, the Process domain is no longer a checklist of isolated activities. It is a cohesive engine designed to assess opportunities for incremental value delivery.



Task Reduction: 50% to 41%

Domain III: Business Environment

The most significant expansion in the 2026 standard. This domain has absorbed critical tasks like Risk Management, Governance, and Issue tracking, cementing the PM's role as an organizational leader.



Massive Weight Increase

Governance & Compliance

Establish structure, ethics, and policies (OPAs).

Confirm compliance for security, health, safety, and sustainability.

Risk & Issues

Maintain risk registers and execute response plans.

Apply intervention strategies to remove team impediments and blockers.

Change Control

Execute change control processes.

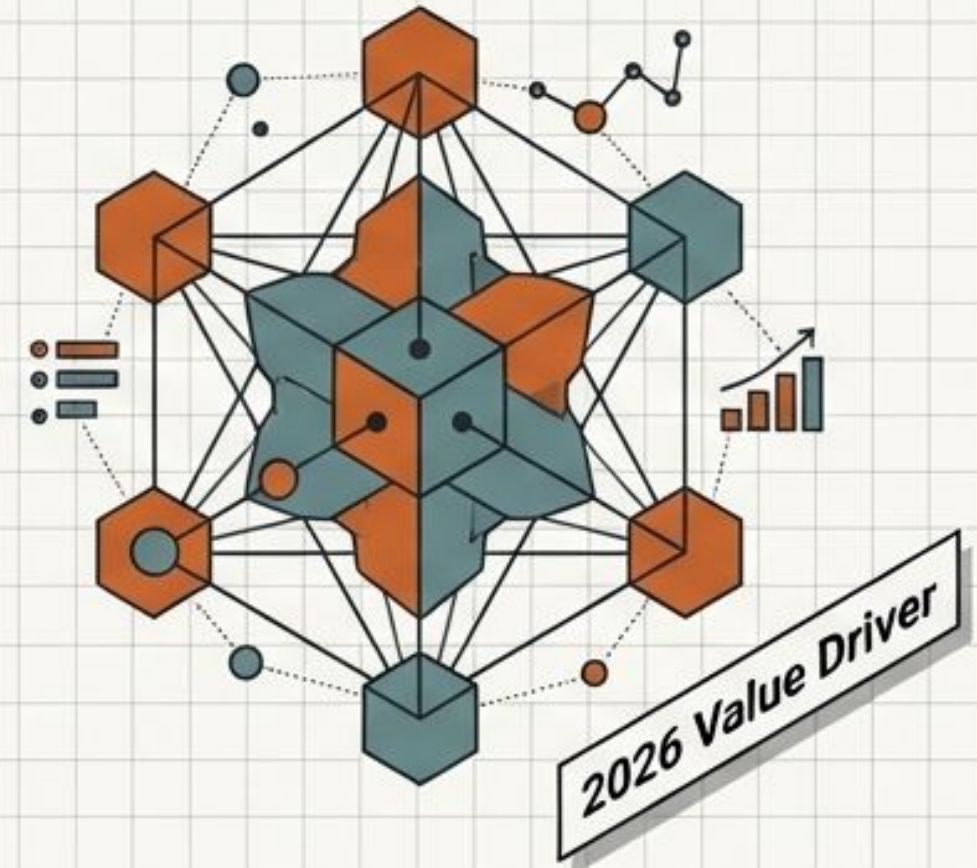
Assess organizational culture and evaluate the impact of organizational change.

External Adaptation

Survey and prioritize impacts from changes in the external business environment (regulations, technology, geopolitical, market).

The New Project Manager: From Taskmaster to Value Driver

The 2026 Examination Content Outline is not just a syllabus update; it is a redefinition of the profession.



The Agility Mandate

With 60% of the exam now testing adaptive/hybrid methodologies, the modern PM must be fluent in iterative delivery, not just predictive planning.

The Business Environment Explosion

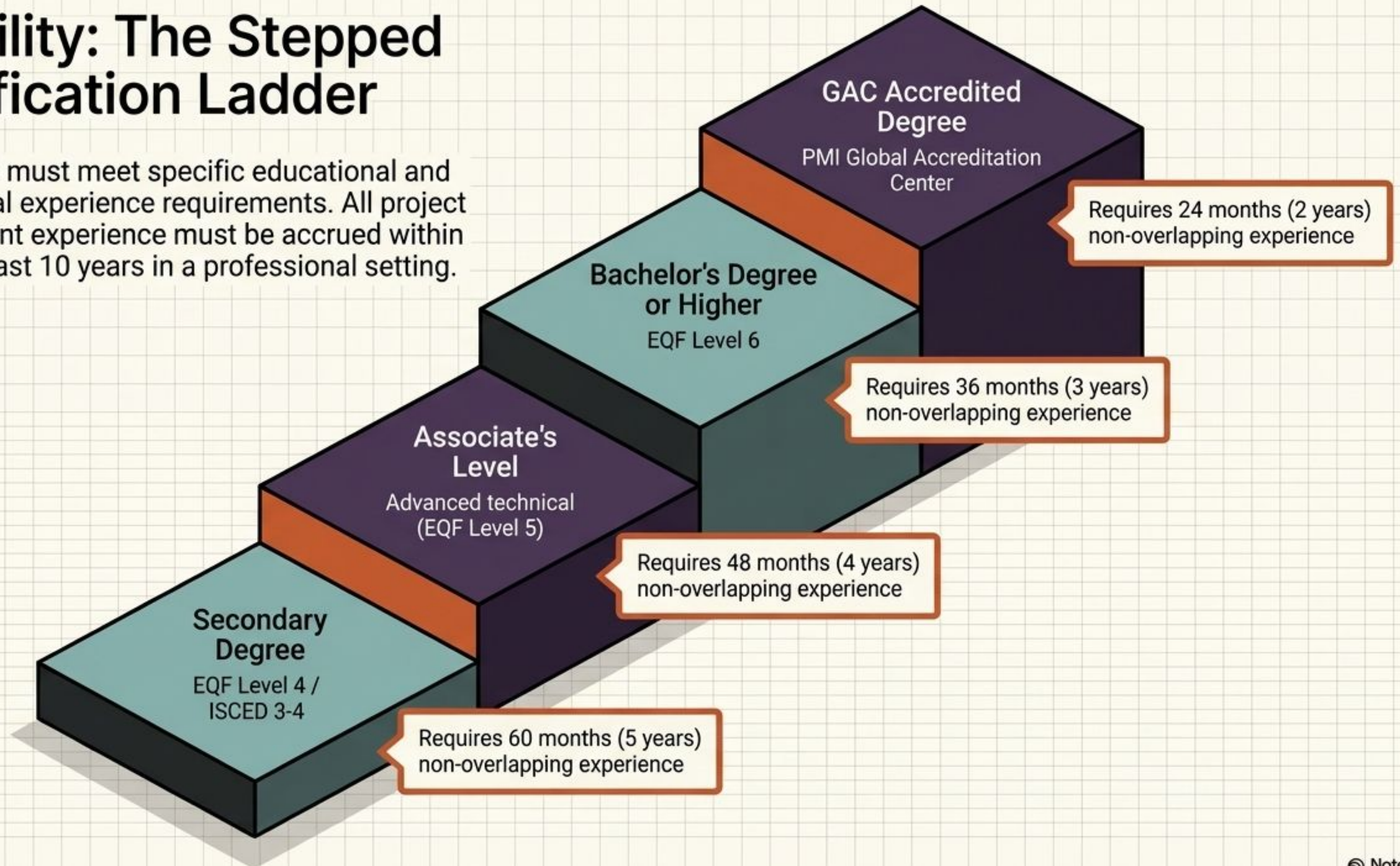
By increasing Domain III from 8% to 26% and shifting Risk/Governance into this category, PMI signals that PMs are business leaders, not isolated administrators.

The Ethical & Technological Horizon

The explicit inclusion of AI integration and Sustainability metrics proves the PM is now responsible for the long-term, global viability of their deliverables.

Eligibility: The Stepped Qualification Ladder

Candidates must meet specific educational and professional experience requirements. All project management experience must be accrued within within the last 10 years in a professional setting.



Calculating Tenure: The Non-Overlapping Rule

Tenure is tracked in total consecutive months, not by the number of projects. You cannot double-count time spent working on multiple projects simultaneously.

CRITICAL: Working on Project 1 and Project 2 from January to June counts as exactly 6 months of eligible experience, not 9.



The 35-Hour Commercial Training Mandate

To ensure quality, PMI has tightened the 35-hour project management training requirement. It must align directly with the PMP ECO topics. One hour of instruction equals one training hour.



Approved Training Providers

- ✓ PMI Authorized Training Partners (ATPs)
- ✓ GAC coursework
- ✓ Accredited higher education courses
- ✓ Employer-sponsored programs
- ✓ Self-paced courses (must include an end-of-course assessment)



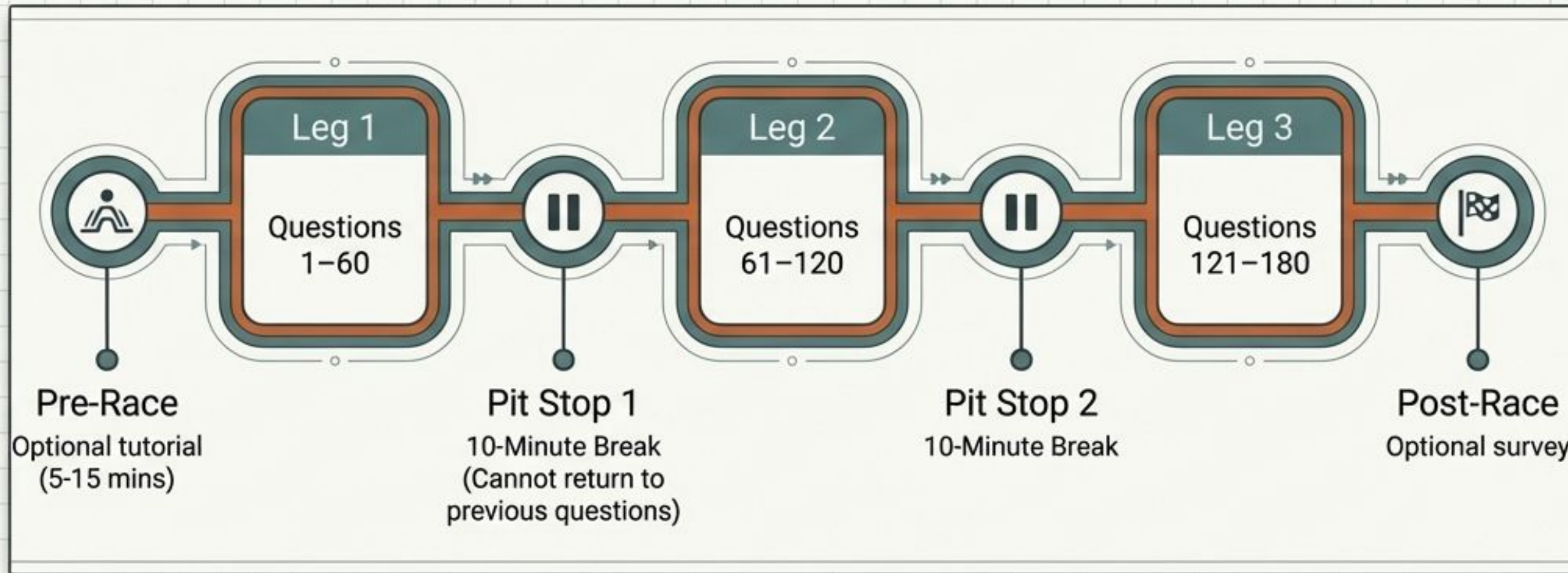
Ineligible Paths

Books and practice exams alone will NOT be accepted. PMI conducts enhanced verification to investigate misleading claims.

The Fast Track: Active CAPM® certification holders automatically earn a 35-hour credit, waiving this requirement entirely.

The 230-Minute Marathon: Exam Logistics

The PMP is an endurance event. Understanding the exact pacing and structure of the exam center experience is critical to test day stamina.



Dashboard Stats

180

Total Questions

175

Scored Questions

5

Pretest (Unscored) Questions

230

Minutes Total Allotted Time