



## Matterport Property Report

### 3113 Kinmont Ave

Indoor Scanned Area 2,032 sq. ft.

Sizes and dimensions are approximate; actual may vary

#### Indoor Dimensions

Room	Dimensions	Ceiling Height	Net Floor Area	Gross Floor Area	Floor
Floor 1	-	-	447 sq. ft.	504 sq. ft.	-
Laundry	23' 7" x 10' 2"	8' 1"	241 sq. ft.	267 sq. ft.	Floor 1
Storage	16' 6" x 10' 4"	7' 9"	N/A	N/A	Floor 1

Utility Room	7' 0" x 10' 5"	6' 6"	72 sq. ft.	80 sq. ft.	Floor 1
Workshop (Storage)	6' 6" x 20'	N/A	124 sq. ft.	157 sq. ft.	Floor 1
<b>Floor 2</b>	–	–	<b>742 sq. ft.</b>	<b>857 sq. ft.</b>	–
Bathroom	7' 3" x 3' 0"	7' 6"	22 sq. ft.	31 sq. ft.	Floor 2
Closet	2' 3" x 4' 9"	N/A	10 sq. ft.	16 sq. ft.	Floor 2
Dining Room	12' 6" x 13' 8"	8' 5"	160 sq. ft.	181 sq. ft.	Floor 2
Kitchen	11' 7" x 8' 10"	8' 4"	105 sq. ft.	121 sq. ft.	Floor 2
Living Room	11' 0" x 17' 7"	8' 5"	192 sq. ft.	215 sq. ft.	Floor 2
Staircase	11' 0" x 2' 10"	Up to 5' 10"	31 sq. ft.	42 sq. ft.	Floor 2
Sun Room	N/A	8' 1"	222 sq. ft.	251 sq. ft.	Floor 2
<b>Floor 3</b>	–	–	<b>574 sq. ft.</b>	<b>670 sq. ft.</b>	–
Bathroom	9' 0" x 5' 6"	8' 1"	45 sq. ft.	58 sq. ft.	Floor 3
Bedroom	10' 8" x 14' 2"	8' 1"	151 sq. ft.	171 sq. ft.	Floor 3
Bedroom	N/A	8' 0"	121 sq. ft.	140 sq. ft.	Floor 3
Bedroom	10' 3" x 14' 3"	8' 2"	144 sq. ft.	159 sq. ft.	Floor 3

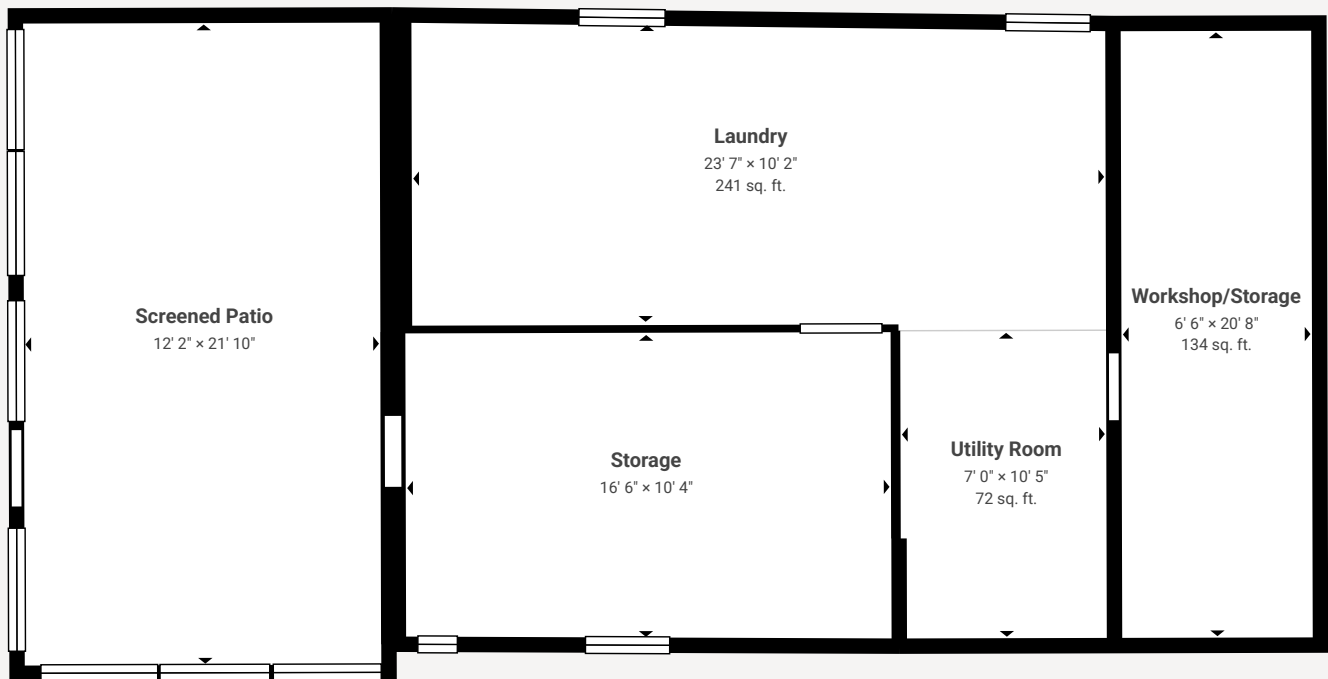
Closet	3' 11" x 3' 2"	N/A	12 sq. ft.	18 sq. ft.	Floor 3
Closet	3' 11" x 3' 1"	N/A	12 sq. ft.	18 sq. ft.	Floor 3
Closet	5' 9" x 1' 10"	N/A	11 sq. ft.	15 sq. ft.	Floor 3
Hallway	N/A	8' 1"	55 sq. ft.	64 sq. ft.	Floor 3
Staircase	6' 9" x 3' 4"	N/A	23 sq. ft.	27 sq. ft.	Floor 3
<b>Indoor Property Totals</b>	-	-	<b>1,763 sq. ft.</b>	<b>2,032 sq. ft.</b>	-

## Outdoor Dimensions

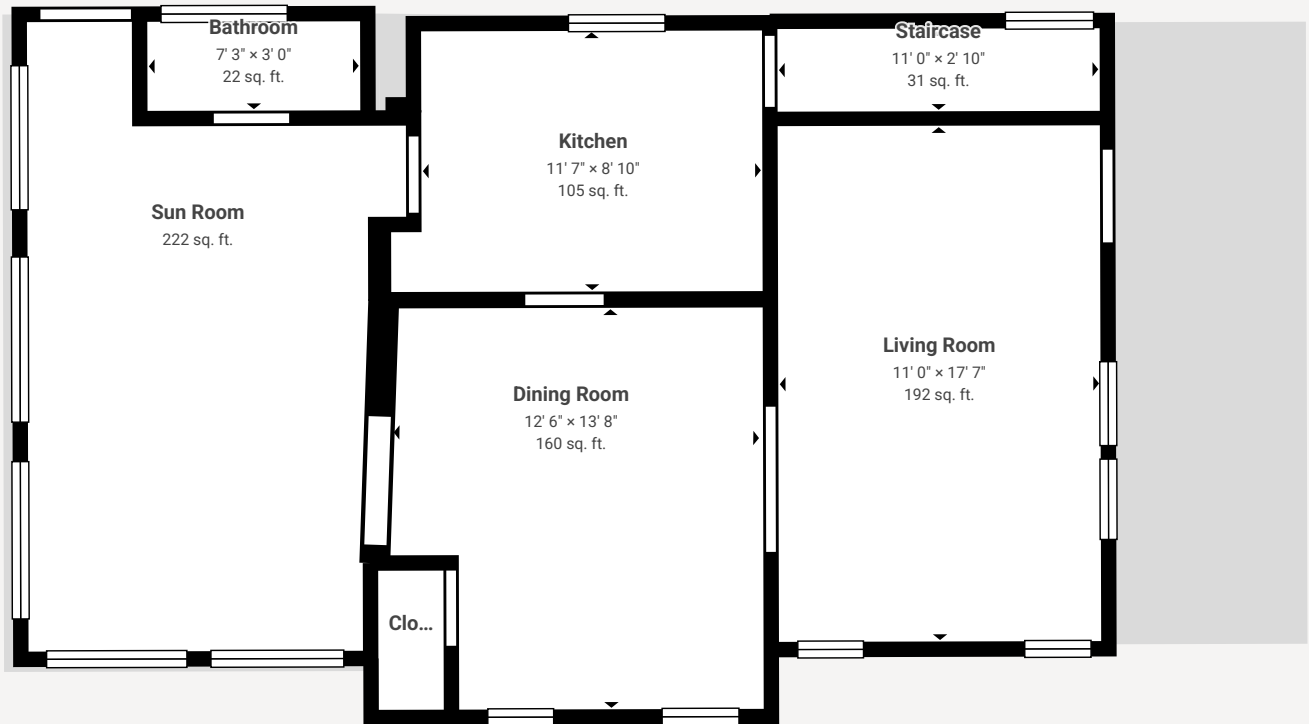
Room	Dimensions	Ceiling Height	Area	Floor
<b>Floor 1</b>	-	-	N/A	-
Screened Patio	12' 2" x 21' 10"	7' 11"	N/A	Floor 1
<b>Outdoor Property Totals</b>	-	-	N/A	-

# Layout

## Floor 1



## Floor 2



Floor 3

