



HAYS FIRST UNITED METHODIST CHURCH

2026-2028

**Commitment Sunday
May 3, 2026**

HAYS FIRST UNITED METHODIST CHURCH

305 W. 7th Street, Hays, KS 67601 | www.haysfumc.com | (785) 625-3408

◆ FROM PASTOR SUSAN ◆

Direct our hearts toward You, as we freely and joyously offer what You have given us.

Dear Hays First,

I am delighted to be serving at Hays First during this exciting time. I thank God for the strong foundation we have in the history of our church, the faithfulness of God in and through us, and the stewardship of our leaders as we navigate Christ's mission in and through us in the world.

I especially want to thank the many people who have been involved in our over the past few months. We have over 50 people coordinating the campaign and its vital mission to keep us as good stewards and connected to God's mission.

I invite you and your family into prayer and discernment about how God is calling you to make a sacrificial gift to this important work to ensure our aging facilities are protected, updated, and improved, not only for us but for future generations at our church.

Please return the enclosed pledge card in worship on Commitment Sunday, May 3, 2026.

I look forward to celebrating with you the fruits of our gifts, so that we can continue serving our world as a vibrant place of worship, formation, and community for decades to come.

In Christ,

Pastor Susan

CAMPAIGN PRAYER

LEADER: Heavenly Father: We ask You to show us how to use our talents, our financial gifts, and our time to help us as we place this campaign in Your hands, trusting that You will supply every need. Bless each giver with peace, joy, and a deeper sense of Your presence. Multiply these offerings so they may bear fruit far beyond what we can imagine.

RESPONSE: May these gifts help strengthen Your church. May they ensure a legacy that future generations may know Your love, hear Your truth, and be transformed in faith.

LEADER: May the work we do now become a living testimony of Your faithfulness, inspiring those who will come after us to continue the mission. Let this be more than a project—it is an act of worship, a declaration of trust, and a legacy of love for Your Kingdom.

RESPONSE: Grant us clarity of vision so that our plans align with Your will. Give wisdom to our leaders, courage to our members, and unity to our church family. Let every meeting, every conversation, and every decision be guided by Your Spirit, and may Your name be glorified.

ALL: We trust You to lead us forward, step by step, into the future You have prepared. In Christ's holy name, Amen.

OUR GENEROUS PAST AND PLAN FOR THE FUTURE

How We Arrived Here

Our church is a beautiful gift from the founders to our community. To be good stewards of this gift requires us to continually identify places that need care and restoration. We have witnessed great stewardship many times in the history of Hays First, including our most recent campaign in 2014-2016 in which many of you shared generously for our benefit today. Now is the time to take action again, for current and future generations. We have identified several aspects of our church that need attention:

- ◆ The limestone on our church routinely needs repair and sealing to protect it from moisture absorption, stains, and weather damage.
- ◆ Our HVAC is inefficient and over 30 years old.
- ◆ One bank of our organ pipes is no longer working and requires expensive repair.
- ◆ The sanctuary sound system needs updating, especially the speakers.
- ◆ Other spaces where an update is essential include our Kitchen, Fellowship Hall, and the Parlor.
- ◆ In addition, we have a debt on the parsonage of ~\$75,000, and if we were to retire the loan we would save \$12,000 a year in payments.

CAPITAL CAMPAIGN GOALS

We know we need to raise funds to care for and update our church building. But the Capital Campaign isn't just about money. It is about the mission of God in and through us, and our own formation as the People of God. We believe our campaign goals include:

- ◆ **Grow in our faith, generosity, and gratitude to God**
- ◆ **Continue our church's legacy by renovating the worship space for future generations**
- ◆ **For every church household to pray and discern and participate financially in the support of the**
- ◆ **Raise \$1.2M over the next three years**

*Where there is no vision,
the people perish.*

Proverbs 29:18



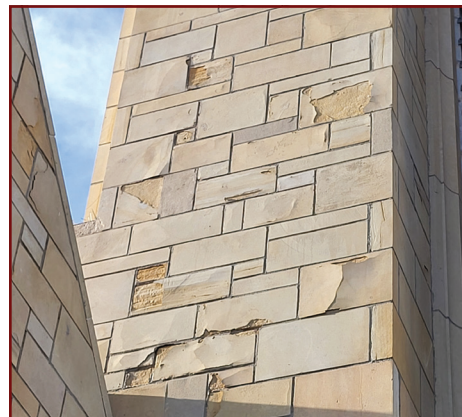
◆ PROJECT PRIORITIES ◆

Our Capital Campaign invests in both space and people, advancing transformational ministry and God's kingdom. By sealing the stone, updating the HVAC, and renovating the Parlor, Kitchen, and Fellowship Hall, we will be prepared to reach and serve more people, launching expanded outreach, discipleship, and mission. Additionally, we are establishing a Next Gen* ministries fund to grow our members spiritually and develop our leaders into excellence, a venture not typically supported through the regular church budget. These efforts will enable us to transform our community and be faithful in our calling.



PHASE 1 ~\$415,000

- ◆ Repair and seal the stone on the Education Wing.
- ◆ Remove asbestos-encased heat exchanger and pipes in the boiler room.
- ◆ Replace the two 32-year-old steam boilers with smaller and more efficient hot water boilers.
- ◆ Replace all temperature controls, install new registers when current ones fail.
- ◆ Pay off mortgage on parsonage for Sr pastor and save ~\$12,000 per year.
- ◆ Set-aside 10% from monies raised for a restricted fund to meet church contingency needs.



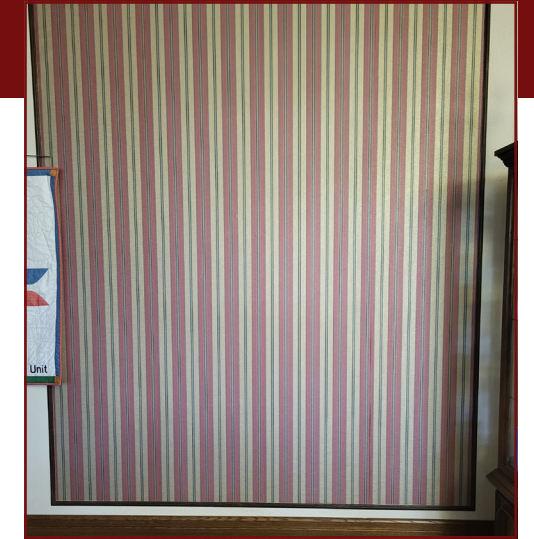
PHASE 2 ~\$295,000

- ◆ Invest in innovative Next Gen ministries: create a discipleship fund to grow the spiritual life and leadership capacity of our church through staff and leader training, digital ministry and website development, curriculum resources, spiritual formation, and evangelism initiatives to enhance outreach into the community and continue our church legacy into the future.
- ◆ Install new premium sound system in the sanctuary. Bids received.
- ◆ Replace the current pipe organ needing expensive repair and maintenance with an electronic organ. Organ pipes will remain in front of the sanctuary.
- ◆ Remove pews behind the pulpits and place the new organ and grand piano across from each other behind the pulpits. The choir will sit on chairs.



Renovate Parlor

- ◆ Remove and replace striped wallpaper on north wall with ascent paint and possible artwork.
- ◆ Install modern chandeliers, new color-coordinated drapes, and furniture (table and chairs on the west end of dining room to remain).
- ◆ Possibly new carpet if needed.
- ◆ Possibly replace south entry double-doors.



PHASE 3 ~\$80,000

Renovate Kitchen

- ◆ New range and convection ovens.
- ◆ New dishwasher and additional freezer.
- ◆ New flooring.
- ◆ Paint cabinets and replace countertops.



Renovate Fellowship Hall

- ◆ Install second cabinet on east wall.
- ◆ Remove dark paneling and paint walls to coordinate with kitchen.
- ◆ Replace furniture.



PHASE 4 ~\$405,000

- ◆ Replace chiller (AC) within 5 years.
- ◆ Investigate separating heating/cooling of church, Parlor, and Fellowship Hall from the Education Wing to save long-term energy costs.

* Learn more about Next Gen and our other proposed projects in the FAQ document on our website: haysfumc.com/capital-campaign

◆ YOUR DECISION TO GIVE ◆

Before you determine what your pledge will be to this campaign, and after you read through this brochure:

Reflect on all the blessings God has given to you, not for your personal use only, but to build the Kingdom of God on earth.

Pray to discern what sacrificial gift God is asking you to give in this .

Remember that every gift, regardless of its size, will be an important contribution to the .

Discuss with your family your intended participation and what it will mean to all of you.

How Much Should I Pledge to the ?

If you are looking for a giving guideline, please prayerfully consider giving 3% of your annual household income for each year of the three-year campaign (over and above regular giving to the church) or a one-time gift of 3% of assets. Some may be able to do this and more. Others may need to choose a different amount. Please know that every gift, whatever the size, will be an important contribution to the and will help further God's mission through Hays First United Methodist Church.

INCOME	WEEKLY CONTRIBUTION	MONTHLY CONTRIBUTION	ANNUAL CONTRIBUTION	TOTAL 3 YEAR CONTRIBUTION
\$30,000	\$17	\$75	\$900	\$2,700
\$50,000	\$29	\$125	\$1,500	\$4,500
\$75,000	\$43	\$188	\$2,250	\$6,750
\$100,000	\$58	\$250	\$3,000	\$9,000
\$150,000	\$87	\$375	\$4,500	\$13,500
\$200,000	\$115	\$500	\$6,000	\$18,000

Commitment Sunday is May 3, 2026.
PLEASE BRING YOUR COMPLETED PLEDGE CARD ON THAT DAY.

If you are unable to attend on May 3rd, please drop off your pledge card at the church, mail it to the church office, or place it in the offering.

May I Give Stocks, Bonds, IRAs or Personal Property instead of Cash?

Yes. Donating appreciated stock or property is an optional way to give. It can save on capital gains tax and is a tax deduction. We recommend that you contact your own tax advisor before making this kind of contribution. For more information about this option email Marsha@haysfumc.com or call (785) 625-3408

How Should I Make My Pledge Payment?

Once you have decided your payment schedule (annual, monthly or weekly), you can arrange for automatic payment from your checking or savings account. You may also write a check for your payments. When writing a check, be sure to write "" in the memo line so it is credited to your pledge.

How are Gifts Different from My Regular Giving?

Hays First is sustained by tithes and offerings. These gifts support the daily, monthly, yearly, and ongoing expenses of the church (e.g., current ministries, utilities, and staff salaries). commitments are over and above regular giving and will be used only for projects.



FROM THE CAMPAIGN TRI-CHAIRS

Dear Friends,

We are truly grateful for the opportunity to be part of campaign leadership for this important endeavor. Hays First has been a cornerstone in the lives of our families and our community for decades, and the work on which we are embarking will have a lasting impact on generations to come.

As you discern your contributions to this campaign, we invite you to pray daily, seeking guidance from God on how you can share God's blessings for our shared future. Every gift, no matter the size, makes a difference and helps us continue the mission that unites us.

Thank you for your support of our current renovation needs and for your commitment to welcoming future families to our faith community.

In faith and gratitude,

Sherri Brown | Randy Clinkscales | Hale Sloan
Legacy-Community/Future
Tri-chairs



SHERRI

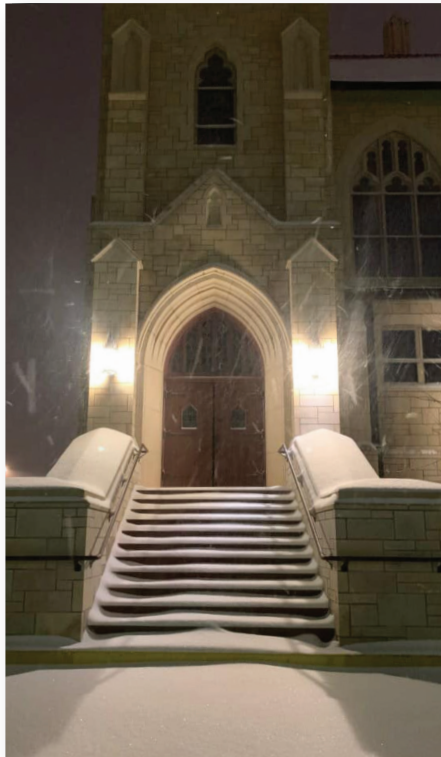


RANDY



HALE





◆ IN APPRECIATION ◆

Thank you to the many members who are serving on Capital Campaign teams.. Your time and efforts are greatly appreciated!

Prayer Team

- ◆ Vicki Kelly
- ◆ Linda Stahlman
- Conner Blubaugh
- Armin Kelly
- Gail Kuehl
- Rick Kuehl

Events Team

- Marcia Bannister
- Tura Clement
- Greg Daughhete
- Ken Griffin
- Dandy Henderson
- Kristi Lang
- Alan Nelson

Thanks Team

- ◆ Kathy Harper
- ◆ Dave Hendrickson
- Wendy Beougher
- Karen Hendrickson
- Jacinda Johnson
- Mary Meckenstock
- Shanda Preston
- Charlotte Rathke
- Megan Skipper
- Diane Wolfe
- Marilyn Wood
- Steve Wood
- Shauna Zweifel

Youth Team

- ◆ Marilyn Davidson
- ◆ Jenna Sloan

Ambassador Team

- ◆ Hannah Barrett
- ◆ Marijo Rooney

Communications Team

- ◆ Marie Henderson
- ◆ Heather Musil
- Sheryl Dreiling
- Keith Harper
- Eric Leuschner
- Marsha Swanson
- Stan Unruh

Tri-chairs

- Sheri Brown
- Randy Clinkscales
- Hale Sloan

Management Team

- Carl Miller
- Susan Murithi
- Shane Preston
- Sarah Schumacher
- Phil Stahlman

Advisory Team

- Hannah Barrett
- Sherri Brown
- Tura Clement
- Randy Clinkscales
- Jeff Copper
- Marla Copper
- Bob Cox
- Sheryl Cox
- Greg Daughhete
- Marilyn Davidson
- Darlene Gilchrist
- Larry Gilchrist
- Kathy Harper
- Dave Hendrickson
- Marie Henderson
- John Irvin
- Eric Johnson
- Jarrold Jones
- Stacey Jones
- Armin Kelly
- Vicki Kelly
- Rob Kennemer
- Traci Kennemer
- Kristi Lang
- Carl Miller
- Troy Miller
- Heather Musil
- Shane Preston
- Marijo Rooney
- Sarah Schumacher
- Hale Sloan
- Jenna Sloan
- Linda Stahlman
- Phil Stahlman
- Diane Wolfe
- Rick Wolfe

COMMITMENT SUNDAY MAY 3, 2026

Please bring your completed pledge card to worship on this day.

Thank you.

- ◆ Campaign team co-leader