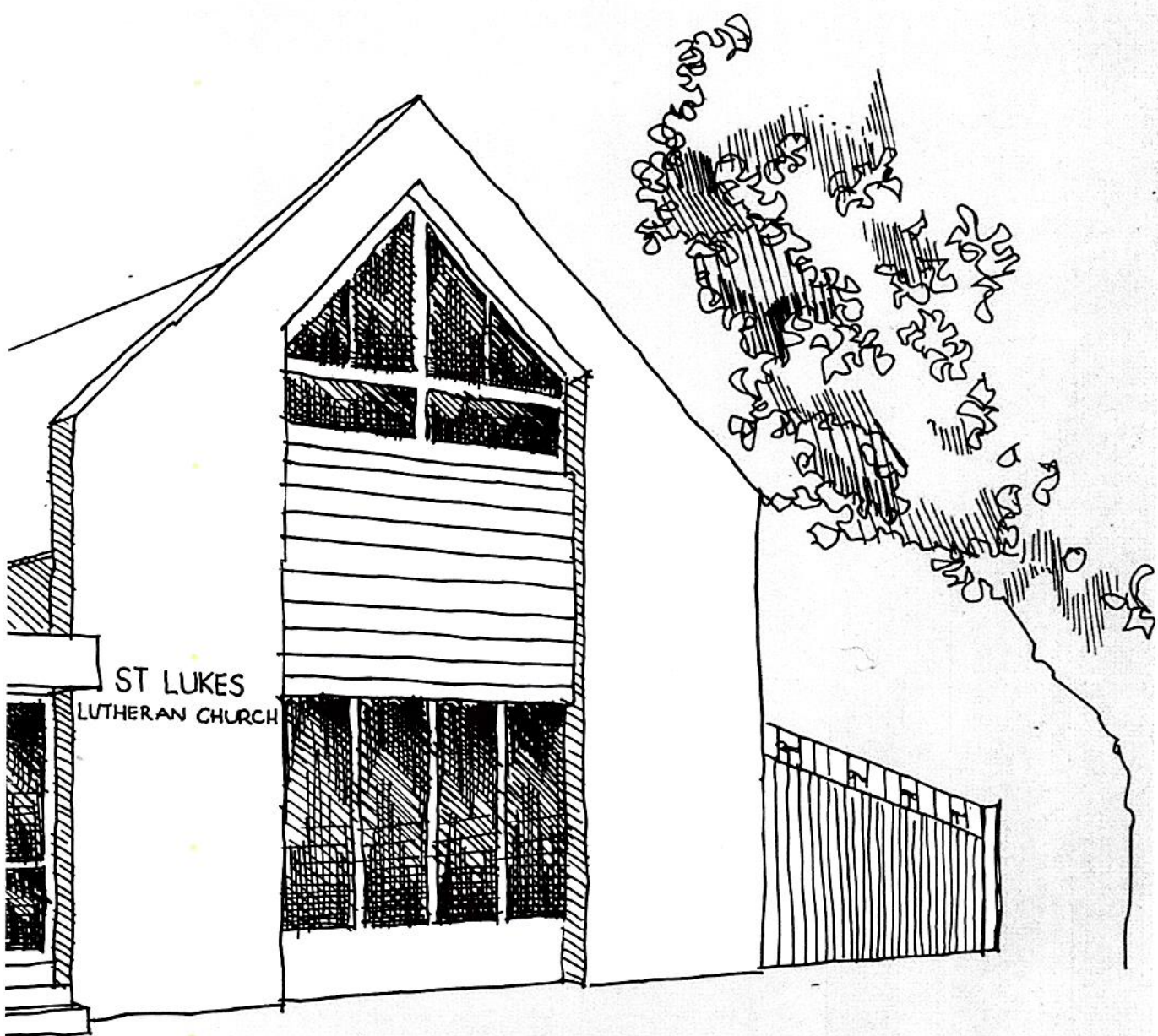


St. Luke's Lutheran Church, Albury



1938 — 1988

THE HISTORY OF
St. Luke's Congregation

GUINEA STREET, ALBURY, N.S.W.

compiled by
Esther L. Simpfendorfer

THIS STONE WAS LAID
TO THE GLORY OF GOD
BY
PASTOR J.H. LINKE
28. 9. 1938.

I. COR. 3.II.

Introduction

This booklet has been written to coincide with the fiftieth anniversary of the laying of the foundation stone of St. Luke's Lutheran Church, Albury. Pastor Linke was the officiating minister. The date was Sunday, September 28th, 1938. And the name chosen for the church was that of St. Luke, physician and author of the third Gospel.

As the years pass congregations develop their own character and flavour. For St. Luke's, as is its name so is its nature. St. Luke was "the beloved physician" (Colossians 4:14). A Physician is intent upon healing. And St. Luke directed the gaze of his readers to the face of the one true leader Jesus Christ, who lived amongst us to heal the rift between God and mankind caused by sin and death. Repeatedly the self righteous complained that Jesus ate and drank with tax collectors and public sinners. So Jesus had to remind them, "Those who are well have no need of a physician, but those who are sick; I have not come to call the righteous but sinners to repentance" (Luke 5:31,32). Chief amongst the characteristics of this congregation are love, kindness, understanding, patience, forgiveness and a spirit of reconciliation.

During the past fifty years countless people have benefited from the healing touch that emanates from Christ's body at St. Luke's. In the post war period St. Luke's ministered to migrants at Bonegilla, displaced from home and family, thereby healing deep emotional wounds. St. Luke's has provided a haven for the elderly, especially those who have sold properties and moved in to Albury. Long standing tensions between the two former Lutheran synods in Australia were quickly healed at St. Luke's at the time of union. Both sides co-operated with a gracious and willing spirit. The people of Trinity in Swift Street took the courageous step of leaving their loved church, while the people of St. Luke's welcomed their brothers and sisters with open arms. Christ's healing hands have been extended to touch adult converts and new arrivals from further afield. St. Luke's pastors and parishioners have taken a leading part in the establishment, expansion and administration of The Lutheran Rest Home. Members have served faithfully on the staff and committee of management. The spiritual care of the residents has been largely in the hands of St. Luke's. Healing comes from fun, laughter and happy social gatherings. There have been those aplenty at St. Luke's. Made whole by christian fellowship St. Luke's people traditionally have had the strength of character and the compassion to minister with sympathy and understanding to those passing through troubled waters. Through the members of His body in this place Christ has healed people suffering crises in their marriage, grief, depression, guilt, financial hardship and ill-health. He has established here a truly caring community.

Christ's greatest healing gift to His people is the sacrament of the altar. Multitudes of worshippers have knelt at the altar of our church, and left relieved, strengthened, uplifted and renewed. I pray that the congregation may always draw its comfort and strength from Jesus Christ, our dear and glorious physician, and as his healed people, retain that keen sense of responsibility to the more fragile and the wounded members of the congregation and wider community.

I pay special tribute to Miss Esther Simpfendorfer for her loving and careful preparation of the manuscript for this publication.

Peter Lockwood
July 4th, 1988.

Early Services

The roots of St. Luke's Congregation go back to the days of Pastor G. Simpfendorfer, who in pre-war years (World War I) held occasional services in the Presbyterian Church, in the German language, and otherwise kept in touch with Lutherans living in Albury.

THE MINISTRY OF *Pastor G. Simpfendorfer*



Pastor G. Simpfendorfer

Mrs B.M. Fritsch (nee Simpfendorfer) now living in Adelaide reminisces of her father's services to the Lutherans in Albury.

"Once again Pastor G. Simpfendorfer had conducted a morning service in the well-established congregation of Jindera, 14 miles south of Walla Walla which was his resident home congregation. But for a period of years, soon after the turn of the century, it was not the end of pastoral duties on some of these Sundays: there was that little Lutheran group in Albury who wanted to worship in their mother tongue and in accord with the faith in which they had been brought up. It was convenient to connect an Albury Service with a Jindera Sunday.

It was therefore a case of partaking of a quick dinner in the hospitable Bartsch home. The 10 miles to Albury was a scenic drive along the edge of the hills, into the big town of Albury which at that time boasted a population of 5,000. The venue was reached in time to park buggy and ponies in the yard behind the Smollett Street Presbyterian Church as folk were assembling in the Church for Worship Service.

Four families come to my mind who attended quite regularly:

1. Mr & Mrs Brunner. Mr Brunner ran a hardware shop dealing chiefly in kitchen ware – pots, pans, ladles etc. He was most meticulous in all he did, they lived in rooms at the back of the shop.
2. Mr Pittmann and his dear sister – a rather striking contrast to the Brunners, theirs was more a life of luxury.
3. The Arnold family (Mrs Arnold was related to the Mickans at Walla Walla) had a prosperous green grocer shop in Olive Street.
4. The Giersch family who later settled in Walla Walla where Mrs Giersch did mid-wifery and other nursing, but daughter Edda had full training as a certificated nurse; she later went to Sydney and joined Trinity Congregation."

A Congregation Formed

From the Dedication Souvenir, presumably written by Pastor J.H. Linke, for the dedication of St. Luke's Church building on 18th December, 1938 we read:

"The present-day congregation consists largely of those who have shifted in from surrounding farming districts. Although not actively served in Albury by Pastor Simpfendorfer they were mostly his spiritual children coming from his country congregations. Others came from the Pleasant Hills and Milbrulong parishes. These in due time made willing material for the beginning of our congregation.

The visible sapling, however, appeared only after the faithful labours of the young Immanuel Seminary graduate, Pastor J.T.P. Stolz, who was called to the Walla Walla parish to supply the much needed English services.

In 1926 Pastor Stolz invited our members living in Albury, and others who were interested, to a meeting which was held on 12th November, in the home of Mr. J. (Jacob) Lieschke. At this meeting it was decided to hold services in Albury. The first regular service was held on 19th December, 1926 (4th Sunday in Advent) at 3pm in Malcolm's Hall. Soon after, on 22nd February, 1927, a meeting was held in the home of Mr F. Schnelle and a congregation was formed, with Mr. G. Arnold as Secretary and Treasurer. Services were then conducted once a month, and on fifth Sundays."

The Souvenir booklet for the Dedication continues: "Soon the question of a house of worship busied the minds of the Pastor and congregation. The purchase of the Congregational Church was almost effected. Later, plans for the building of a new church were well afoot, but endless difficulties frustrated all, and the depression of 1930 - 1935 seemed to bury all hopes, in spite of the Pastor's untiring endeavours. In the meantime services were held in whatever halls were available, such as Cearn's Hall, finally in St. Matthew's Sunday School Hall and on festive occasions in the Presbyterian Church.

Another decided step forward was the establishment of the Sunday School, under considerable difficulties. Until October, 1927, the Pastor himself held the classes in connection with the services, but then Misses A. Arnold, G. and L. Wiggins and S. Lieschke were appointed Sunday School teachers. Sunday School was held every fortnight. Then for a while Sunday School closed, but was re-opened Easter 1934, with Miss G. Terlich as teacher, later assisted by her sister, Miss F. Terlich.



First Confirmation Class - 1937
Back row: Lawrence Jacob, Pastor Linke, Alan Terlich.
Front row: Mavis Singe, Dorothy Scholz, Elsie Stanton.
The Confirmation Service was held in the Presbyterian Church.

THE DEDICATION OF THE *Church Building*

"It is natural that a tree with healthy roots, which has been planted well and tended with care, should grow and spread its branches. On the 21st June, 1936, Pastor J.H. Linke, another Immanuel Seminary graduate, was inducted in the Southern (Albury) Field of the parish, and with that event Albury received a resident minister. The steady increase of members in the congregation soon convinced the young Pastor that a house of worship was very necessary as a home to knit together and foster congregational life. Early in 1937 he obtained the consent of the congregation to investigate the possibilities. This was promptly done, with the help of Mr C.W. Scholz. The results were acceptable and encouraging. Further collections throughout the congregations of the N.S.W. District realised the substantial help of several hundred pounds. When the total stood at £1,200 the decision to build was easily made. A building with a nave of 42ft. by 22ft. inside was eventually decided upon. On the 22nd August, 1938, the contract was let to Mr. F.W. Lemke at £1,408. The furnishings, made by Mr H. Schmidt (of Schmidt and Dietrich) are of stained and polished sylvan oak and, with the exception of the pews, are the presents of willing hearts and hands. When we add to this the cost of the land (£370), the money devoted to the erection of this house amounts to £2,000. On the 28th September, 1938 the foundation stone was laid."

Pastor B.E. Bartholomaeus continues the history of St. Luke's in a report in *The Lutheran Light*, written for the 25th anniversary. We quote:

"The Dedication Service was conducted on 18th December, just 12 years after services had commenced. There was a large gathering in spite of the pressing heat, so that also the tent alongside of the Church was filled to overflowing. President Pastor H. Fuhlbohm performed the acts of dedication; President of Victoria, Pastor E.A. Jericho preached the dedicatory sermon; Pastors A. Lohe and J.T.P. Stolz preached at the Mission Festival and Pastor J.H. Linke took charge of the liturgical parts of this service.

In his address Pastor Stolz explained that he had chosen the name: St. Luke's Church, because St. Luke realized the Mission duty of Christianity also amongst those not of his own kin. The Walla Walla and Jindera choirs beautified the services.



Building Committee and Church Trustees.

Standing: Messrs. H. Terlich, H. Molkentin, C. Koetz.

Sitting: Messrs. J. Lieschke, C. Scholz, P. Ebert.

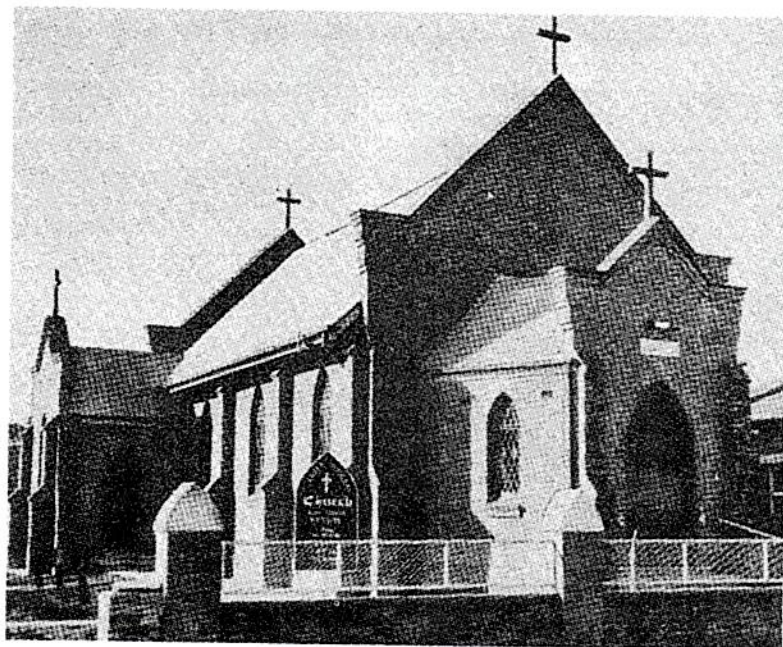
Absent: Mr. L. Wenke.

In 1939 Pastor Linke resigned from the field in order to further his studies in Europe, and so Pastor B.E. Muetzelfeldt was inducted on 2nd July of that year. After 9 years, on 18th July, 1948, he was granted leave of absence to take up chaplaincy duties at the Commonwealth Immigration Centre at Bonegilla. This was later extended until in 1951 it was clear that Bonegilla required a constant office. And so Pastor C.E. Scheer became Pastor of the parish in May, 1951, after he had since 1st October, 1948, acted as locum tenens.

It was during this time that the hall was erected, the building operations having begun in February, 1948. The Building Committee consisted of the Brethren C. Koetz, A. Weule and T. Grosse with Ken Scholz (Treasurer) representing the Youth. However, in the post-war period there were many delays, and so the dedication could take place

only on 6th November, 1949. This was performed by Pastor B.E. Muetzelfeldt with Pastor Scheer unlocking the door.

During 1962, plans were drawn for the extension of the church, but it was finally considered more important to create more room for Sunday School work, by extending and adding rooms to the hall."



Original Church Building



After Extensions

MILESTONES IN THE *History of St. Luke's*

- 19th December, 1926. First regular service conducted by Pastor J.T.P. Stolz.
- 22nd February, 1927. First meeting held and the congregation formed.
- 21st June, 1936. Pastor J.H. Linke inducted into the Albury Parish.
- 28th September, 1938. Foundation stone of St. Luke's church was laid.
- 18th December, 1938. Dedication of St. Luke's church by Pastor H. Fuhlbohm.
- 2nd July, 1939. Pastor B.E. Muetzelfeldt was inducted into the Albury Parish.
- October, 1948. Pastor C.E. Scheer became locum tenens.
- May, 1951. He became Pastor of the parish.
- 6th November, 1949. Dedication of the hall by Pastor B.E. Muetzelfeldt.
- 17th April, 1955. Induction of Pastor B.E. Bartholomaeus.
- Dedication of the manse.
- 15th December, 1963. 25th Anniversary of St. Luke's Church.
- To mark this occasion the hall was considerably extended.
- 22nd January, 1965. Induction of Pastor E.T. Sabel.
- 28th November, 1965. Declaration of Altar and Pulpit Fellowship between the two Lutheran Churches.
- The congregation had grown from fifty to three hundred and thirty baptised members. Two daughter congregations were formed (Wodonga and Lavington).
- From this point on a united Lutheran Church continues, which under God will go on to greater tasks and better service.
- A number of former E.L.C.A. Trinity members transferred to St. Luke's and were welcomed into membership.
- 11th December, 1966. Pastor S. Mibus installed into St. Peter's Lavington as a second Pastor of the Albury Parish.
- 12th March, 1967. Re-opening of St. Luke's after extensions were carried out. Seating is now 300.
- 2nd April, 1967. Old Albury Parish of U.E.L.C.A. was dissolved.
- 29th June, 1969. Induction of Pastor D.R. Tscharke.
- February, 1970. Division of the Parish – Lavington, Corowa and Glenroy became a subsidised Home Mission parish under the spiritual care of Pastor S. Mibus.
- May, 1971. St. Luke's House, (corner Guinea and Macauley Streets) was purchased.
- 25th September, 1977. Induction of Pastor N.E. Jaensch.
- July, 1983. Lutheran Rest Home accepted as part of St. Luke's Congregation.
- 23rd September, 1984. Induction of Pastor P.F. Lockwood.
- 10th July, 1988. Pastor Lockwood resigned to take up a Church scholarship for post-graduate studies in Old Testament at Luther Northwestern Theological Seminary, St. Paul, Minnesota, U.S.A.
- 25th September, 1988. 50th Anniversary of the building of St. Luke's Church celebrated.
- The baptised membership of the congregation is now almost 400 persons.

Outreach from St. Luke's

To summarize some of the previous facts:-

St. Luke's began as a branch of the Walla Walla parish. When a permanent minister, Pastor Linke, was appointed, Bethlehem Congregation at Jindera and Bethel, both part of the Walla Walla parish, were apportioned to the Albury parish. This became the Southern (Albury) Field and consisted of the congregations and preaching-places of Albury, Jindera, Bethel, Brocklesby, Wangaratta and Yackandandah. Pastors Muetzelfeldt and Scheer, due to wartime petrol rationing, frequently travelled to these places per bicycle.

Bonegilla

Soon after the War ended migrants began to arrive at Bonegilla Commonwealth Immigration Centre so Pastor Muetzelfeldt became involved in the spiritual care of these New Australians.

In 1951 he was employed full-time at Bonegilla.

Lavington

Spiritual work began at Lavington with Sunday School being held in the home of Mr. and Mrs. Ivor Paech. The first service was conducted by Pastor Scheer on 24th May, 1953 and the congregation of St. Peter's was constituted on 27th May, 1956. The new church building was dedicated on 12th May, 1963.

In February 1970 the parish was divided and Lavington, Corowa and Glenroy were formed into a subsidised Home Mission parish with Pastor Mibus in charge.

Wodonga

Services were first held at Wodonga in August 1954 and were conducted by Pastor Scheer in the German language for the benefit of the New Australians who had settled in Wodonga from Bonegilla. Misses Ella and Adeline Yensch from Albury conducted Sunday School classes. From 1957 a portable building was used as a place of worship.

In 1967, following the amalgamation, Wodonga and Yackandandah congregations formed a separate parish under the care of Pastor L. Altus.

Corowa

It was Pastor Stolz from Walla Walla who first conducted services at Corowa beginning about 1942, and then it was served by the Albury ministers.

In 1966 Pastor Musinskis from Wangaratta officially organised the congregation. On 2nd May, 1967 St. Andrew's Church in Corowa was re-dedicated, the building having been moved from Pilgrim Lutheran Church in Wodonga, the members from which had transferred to St. John's.

Lutheran Rest Home

St. Luke's became involved with the spiritual care of the residents in the Lutheran Rest Home in 1970, when Pastor Tschärke was asked to take over the chaplaincy. In July 1983 it was officially accepted as part of St. Luke's congregation.



Lutheran Rest Home

PERSONAL GLIMPSES AND RECOLLECTIONS *from the Ministers*



PASTOR J.T.P. STOLZ
1926 - 1936

Pastor J.T.P. Stolz, assistant pastor of the Walla Walla parish, served the Albury congregation for almost 10 years from 1926, holding monthly services in hired halls. His faithful wife, Annemarie, accompanied him and often played the piano for the hymns. Mr Ray Paech, a present member of St. Luke's, but at that time a member of the Walla Walla congregation, also came with and frequently drove the car to enable Pastor Stolz to prepare for the services.

Pastor and Mrs Stolz retired to Adelaide and it is regretted that neither of them can participate in the anniversary celebrations, Pastor Stolz having been taken from this earthly life on 19th September, 1982 and Mrs Stolz on 12th November, 1987.

Their two children are John and Barbara.



PASTOR J.H. LINKE
JUNE 1936 - 1939

Pastor J.H. Linke, who graduated from Immanuel Seminary in 1935 was appointed to the Albury parish as the first resident minister. He was ordained at Gruenberg, S.A.

It was during his time at St. Luke's that a house of worship was built in Guinea Street.

However, in 1939 Pastor Linke left Albury to further his studies at Erlangen University in Germany, gaining the degree of Doctor of Theology. He then became Pastor of the Hanoverian Lutheran Free Church at Luenberg, Germany, where part of his work involved comforting the relatives of war casualties.

He married and had two daughters. But in November, 1944 the Lord called him to his eternal rest at the age of 35 years, before he returned to his homeland.

PASTOR B.E. MUETZELFELDT, D.D.

JULY 1939 – JULY 1948



Pastor and Mrs. Muetzfeldt, Michael and Robert

Nine months after the foundation stone of St. Luke's Church was laid, a group of gentlemen stood on the Albury Railway Station platform to welcome their new pastor. Most of them looked rather elderly to a 21 year old who was not aware that, in those years, St. Luke's congregation had many members who had come from the surrounding country areas to retire in Albury. The warmth of their welcome was typical of the kindness I experienced during my ministry in the Albury Parish. Yet, I was not quite prepared for the greeting of one Elder who with deep emotion said to me: "Thank you, Pastor, for coming to bury us!". Somehow I had not envisaged that function to be the primary purpose of my ministry! In retrospect, however, I am thankful for that experience, because it stimulated me to put special emphasis on the challenge of sharing the living message of the Gospel with the youth on whom, humanly speaking, so much of the future of

the Church depends. It is with deep gratitude that I recall the understanding and support received as I became increasingly involved in youth work beyond the parish level as NSW Youth Pastor and through the publication of relevant material, the initiating of Youth Camps and the newly formed UELCA Youth Department.

Furthermore, I remember with gratitude to the members of the parish the progress made in the development of congregational life, outreach into the community and self-support. Within a few years the subsidised "Southern (Albury) Field" of the Walla Walla Parish became, thanks also to the understanding of the late Pastor J.T.P. Stolz, the self-supporting Albury Parish, published its own parish paper, paid off the remaining debt on St. Luke's Church building as well as adding a hall to its facilities and, jointly with other congregations and the District Synod sponsored the new Corowa Home Mission Field.

This spirit of co-operation and commitment is the source of special gratitude when one recalls that these and other endeavours were pursued during and shortly after the war which demanded sacrifices of many kinds and placed limitations on many aspects of life. Particular mention should be made also of the Ladies Guilds which, in addition to their traditional support for Mission work, started the "Soldiers Comfort Fund" and supported Red Cross activities. They, together with the L.Y.P. Societies and many others, also helped the Pastor to keep in touch with the 30 men and women of the Parish in the Armed Forces, many of whom were members of St. Luke's and three of whom paid the Supreme Sacrifice. When, in 1947, the Army Camp at Bonegilla became Australia's first Immigration Reception Centre, a new opportunity to support a ministry beyond its immediate concerns was accepted by the Albury Parish in granting its Pastor leave of absence to serve these "New Australians", as they were then called. This co-operative gesture, as also the willingness of Pastor Colin Scheer to serve as locum tenens until he was installed as my successor in the parish, were greatly appreciated.

Albury and the people of this parish shall always have a special place in my wife's and my memory. This was where I was privileged to commence my Christian ministry. It was here where I had my first "home away from home" under the kind care of my land-lady, the late Miss Sophie Wiesner. It was here that my wife and I started our life together 46 years ago in a manse so generously provided and equipped by our parishioners a rented house in Park Avenue. It was here where our children were born and baptised and where we experienced generosity, guidance,

understanding, encouragement, friendship and love within our church family and beyond in a measure far greater than words can express. Therefore, let me greet you on this happy occasion of the 50th Anniversary of the laying of the foundation stone of St. Luke's with the words which stood at the beginning of my Letter of Call to this church and parish: "In the Name of our Lord Jesus Christ." May He continue to be the Foundation Stone of St. Luke's church and of the life of all who worship in this House of the Lord.

Bruno Muetzelfeldt

AUTHOR'S NOTE:

The three men from the parish of the Southern Field, as it was at that time, who gave their lives for their country were Driver Norman Franke, Flight-Sergeant Ray Dallwitz and Sapper Theodore Scholz.

Pastor Muetzelfeldt was President of the N.S.W. District, U.E.L.C.A., from 1954 till 1960. He received the honorary degree of Doctor of Divinity from Capitol University, Ohio, in recognition of excellent work in the various positions in which he served the Lord and His church.

From 1961 - 1980 he was Director of Lutheran World Federation, Department of World Service HQ, Geneva, Switzerland, after having been Director of L.W.F. in Australia from 1951 - 1960.



Wedding at St. Luke's, Albury, of Latvian and Estonian couples from Bonegilla Immigration Centre, 1948.

(At that time Pastor Muetzelfeldt was registered only in N.S.W. for the celebration of marriages.)

PASTOR C.E. SCHEER

JANUARY 1948 – SEPTEMBER 1954

My coming into the work of the Albury Parish seemed to be more by "accident" than by design. My ministry there began in January 1948 when I was asked to assist Pastor Muetzelfeldt, who was being increasingly involved in migrant chaplaincy at Bonegilla. After nine months as assistant I became locum tenens, that is, literally "hanging on" to the parish while Pastor Muetzelfeldt's future work among the migrants became clarified. However, this temporary tenancy lasted two and a half years. Finally in April 1951 I was called to full pastorate in the parish.

Serving Lutheran migrants in Albury and Wodonga in those earlier years was an interesting experience and I thoroughly enjoyed the work, also benefiting by the inter-cultural exchanges. Just before leaving the parish, in August 1954 I began formal services at Wodonga in the German language.

The following are some other highlights which come to mind:-

The beginning of work in the Lavington area, with worship services in the Lavington Hall and Sunday School classes in the home of Mr & Mrs Ivor Paech - at that time a small but very faithful nucleus of members. Who at that time would have envisaged the congregation growing to its present day size!

The enjoyable and rewarding work with the members of the St. Luke's Youth Society, which functioned strongly with varied social activities, lively topic discussions, business meetings which the chairmen had a way of making interesting, a very lively interchange with neighbouring youth at rallies and camps, some of which were held on the banks of the Murray in South Albury, and some enjoyable concerts staged together with members of the Jindera-Bethel Youth Society.

The St. Luke's choir served the congregation very well, not only at worship, but on other special occasions. High point, I believe, was reached when the choir attempted and admirably succeeded in singing the "Hallelujah Chorus" at Christmas Carol evenings in two successive years.

The monthly Friday night gatherings of members of various denominations in Albury, to "sit in" on a typical service held by the various churches in turn and afterwards to discuss their distinctive teachings.



*Wedding of Pastor Colin Scheer and
Ruth Simpfendorfer at St. Luke's on
14th January, 1955.*

The patience of Pastor and Mrs Muetzelfeldt who "put up" with me as a boarder for the six years I was in Albury, and to whom I shall be forever grateful for their consistent help and friendship.

Somewhat incidental and yet significant for me is this incident concerning one of the families of the St. Luke's congregation. April 13th, 1944 will always be in my memory, not only because it was my first day in the parish ministry in coming to the Corowa Home Mission Field. It was on that day, in company with the District President, Pastor J. Stolz, that I called on my first parishioner, Ed Scholz, living at Howlong at that time. His first words to us were: "I don't know whether they are having me on, but they have just phoned from the Corowa Hospital to say that my wife has triplets." It is a rare privilege for a pastor to have the baptism of triplets especially when that baptism is among the first in his ministry. Mother of the triplets, Mrs Toni Scholz, is still a member of St. Luke's.

My ministry at St. Luke's leaves me with wonderful memories, not only because my wife Ruth hails from Albury, but also because of the great friendship members showed to me, friendships which are being sustained through our regular visits to Ruth's family at Albury.

Colin Scheer

PASTOR B.E. BARTHOLOMAEUS

APRIL 1955 - OCTOBER 1964

With our family of 4 boys, Richard, Peter, Christopher and Anthony, my wife and I arrived in Albury in April, 1955. The new manse wasn't quite completed, so Mrs Bartholomaeus and the boys stayed with Pastor and Mrs S.H. Held in Walla Walla for about a week until the manse was dedicated on the Sunday of my Induction.

During my ministry at Albury the following are the main events:

The new church, donated to the Home Mission by Mr Bill Jacob, was erected and dedicated in Wodonga.

The Church in Lavington was built and dedicated. For this I laid the Foundation stone on 21st August, 1960.

The Church in Jindera was built and dedicated. For this also I laid the Foundation stone, on 3rd December, 1961.

The hall in Bethel was built and dedicated, and again I laid the Foundation stone.

Rooms were added to the hall at St. Luke's.

When Pastor David Fetter came from the U.S.A. to conduct Missions in some of our parishes, the Albury parish was the first in which he conducted such a Mission. Pastor S.H. Held was the Mission Director.

Offices I held while in Albury were:

Secretary of the Home Mission Committee 1959 - 1964.

Secretary of the Pastors' Conference and Synod 1958 - 1961.

Vice-President of Synod 1961 - 1964.

Member of the St. Paul's College Board.

Mrs Bartholomaeus was President of the N.S.W. L.W.A. for several years.

For a number of years I wrote the devotions for The Australian Lutheran.

I did much of the translation of the N.T. from Greek into English in connection with all the Bible studies in the parish.

I was ordained to the holy ministry on July 2nd, 1939. The Albury parish helped us celebrate the 25th Anniversary of that event in 1964.

One of the most joyful events during our stay in Albury was the birth of our daughter: Kathryn Joy, on Feb. 13th, 1960! Benno Bartholomaeus.

AUTHOR'S NOTE

Pastor Bartholomaeus appears to have specialised in the laying of Foundation stones as he was asked to deputise for the District President, Pastor M.R. Stolz, at the laying of the Foundation stone at Canberra Church on 4th June, 1961.

Pastors K. Kuchel and K. Schmidt relieved at Albury during the 6 months between Pastor Scheer's departure and the arrival of Pastor Bartholomaeus.



Pastor and Mrs. Bartholomaeus celebrating the 25th Anniversary of Pastor's Ordination to the Ministry. 5th July, 1964.

PASTOR E.T. SABEL

JANUARY 1965 - APRIL 1969

From our first contact with the people of St. Luke's, both Margarete and I felt that we were among Christian brothers and sisters. One would hope that this feeling is present in every Christian congregation, but we certainly felt it in a special way at St. Luke's. There was a genuine piety and spirituality that expressed itself in many ways, including warmth and friendliness and goodwill.

This first impression continued—and strengthened during the years we were there, and it is one of the first things that comes to mind when we think of St. Luke's. We have happy memories of so many people we came to love and admire.

Among the events that stand out in my memory of this time are the extensions to the church building, the stewardship programme, the formation of the Couples Club and the Junior

Youth Group, and the union of the two Lutheran synods. Recalling these events brings to mind many others as well, too numerous to mention, but I want to make a few comments about just one event - the union of the two synods, because in a special way it was history in the making.

At the time of this momentous event there were reports from other places of friction and bitterness and difficulty. My experience of union included none of those.

I understood that it was not an easy thing for some people, and that there would be some sadness at the end of an era. For some there may have been sadness involved in saying goodbye to buildings, or to a pastor; for others there was some sadness in saying goodbye to a church family that was familiar and well-loved. But as far as I could see, the over-riding attitude was one of positive co-operation, growing out of a deep gratitude to God that at last the seemingly impossible had become possible. There was joy and excitement and a happy integration.

Humanly speaking, I believe the happy experience in Albury owes much to the honest, positive approach of Pastor Luther Altus, as well as a genuine desire to make it work on the part of many people.

Ern Sabel.



Pastor and Mrs. Sabel, Christopher, Peter and Josephine.

AUTHOR'S NOTE

In 1967, whilst still at St. Luke's, Pastor Sabel took on part-time chaplaincy at Bonegilla Commonwealth Immigration Centre. It became a full-time position for him in 1970.

He has now risen to the honored position of Principal Chaplain of the Department of Defence for Australasia. He carries the rank of Brigadier and is resident at Canberra.

PASTOR D.R. TSCHARKE

JUNE 1969 - JANUARY 1977

In looking back I think I can safely say that the seven and a half years spent at St. Luke's were amongst the busiest, possibly also the most fulfilling years so far of my ministry. I can well remember the beautiful sunny winter morning of my induction, followed by the friendly welcome luncheon in the hall. In the afternoon the Border Morning Mail was on the doorstep for a family picture and story, and sure enough next day there we were, also acknowledged in the local press! It was an exhilarating start but we soon came down to earth as the busy routine of an active parish settled over us.



Pastor and Mrs. Tschärke, Judith, David and Alison.

Things that stand out in my memory of St. Luke's are numerous, so I shall simply state what comes to mind. First of all the positive, hospitable membership of the congregation; the well-attended Sunday morning services; the Carol Evenings at the Albury Bowl and later in front of the Rest Home; Sunday School picnics in the Jindera School grounds; the lively Discussion Group evenings; the Fellowship afternoons for the Senior Members and folk from the Rest Home; the periodic pleasant Sunday afternoons of sacred music; Youth Camps out at the Weir; the genial activities of the Couples' Club; the purchase and dedication of the Corner property; the purchase of a new Communion Set as a special mark of thanksgiving for a happy amalgamation; the separation of St. Luke's from Lavington-Corowa-Glenroy to form two parishes, and I could go on.

The thing that occupied me most during my stay at Albury, apart from the regular work of the Parish, was the development at Riverview Lutheran Rest Home. In 1970 the District Council appointed me chaplain and in 1971 also member of the Board, in the place of Pastors Sander and Mibus, respectively, when they transferred away. When I got to my first meeting I found I had already been elected to the chair, "because the pastor on the Board is always the chairman"! That is where my real involvement began.

For several years the matter of providing nursing facilities at the Home had been discussed as a necessity but without any finality. It became my task to investigate the possibility and then to head a planning, and when the decision was taken to proceed, also a building committee. However there were difficulties to be overcome. Government policy at the time was to grant capital subsidy for only half the number of nursing beds as other beds provided by a Home. Without Government subsidy we couldn't even think of starting such a project, and the District Church didn't have a cent to lend us. The problem was, our existing Hostel section did not give us enough bed entitlements to build a viable nursing wing as required to attract subsidy.

The first move was to try to get bed entitlements, which were transferable, from other organisations in Albury which were not using any or all of theirs - but without success. The Rest Home Committee were then instrumental in having a public meeting called of all interested bodies to pursue the avenue of building a large community Nursing Home on Base Hospital property, with the aim that it also be under that Board's jurisdiction. But that hope was also dashed. The only avenue left was to enlarge our own Hostel section and purchase adjoining land and build a few self-contained units. This of course meant enlarging the kitchen and dining room as well. Thus the project grew bigger and bigger - and so did our side of the cost.

Many prayers, meetings and headaches later, when all the Federal, State and Local Government authorities - eleven in all - had been satisfied, a successful tender negotiated and an L.L.L. loan secured, building was able to proceed. This was also a chapter of difficulties, not least of which was the sudden dramatic increase in building costs within weeks of signing the tender.

However the Lord helped us over every hurdle and the day of dedication and opening arrived, 17th August, 1975, a day of real thanksgiving in the presence of a large crowd. But when all past traumas really melted into nothingness, and the project literally took on flesh and blood with a depth of great joy and satisfaction was the morning the appointed matron (Mrs Grace Lohmeyer), opened the door to the first nursing resident. Since then many weary souls have found there a wonderful haven of rest preparing for eternity.

The 30th January, 1977 saw us saying farewell to St. Luke's and taking with us many happy memories and a wealth of experience. We had come to Albury as a family of four, but counted five when we left. That is just an added reason why we count Albury amongst our blessings.

Doug Tscharke.

PASTOR N.E. JAENSCH

SEPTEMBER 1977 - AUGUST 1984



*Pastor and Mrs. Jaensch and Elizabeth (Liz).
40th Anniversary of Pastor's Ordination
into the Ministry.
19th April, 1982.*

To try to encompass into a short space a summary of seven years of ministry in a congregation would be a frustrating exercise, so I shall merely give some impressions of my work and experiences in Albury.

I remember that I arrived in your fair city in the throes of a terrible dose of 'flu', with the result that physically my arrival was anything but auspicious, but the exceedingly warm welcome given me and my wife and daughter must have had a good effect, because I seem to have recovered quite rapidly and settled down to learning to know you and your special needs.

I remember giving you the assurance, that, if God spared me so long, you would have me as your pastor for seven years, that is, until I reached the retiring age of sixty five years. By God's grace I was able to keep that promise, and so saved you the tribulation of having to find a pastor in a short time, had I accepted a call elsewhere. It was not that I had made up my mind not to consider

another call - that would have been most improper - but I felt sure that nobody would be likely to issue a call to a pastor with a history of illness, when he had only two years to go before retirement.

I am glad and thankful that God did spare me for seven full and happy years as pastor of St. Luke's. I believe that God did use me for much good in my ministry among you, and I did enjoy the work very much, even though it did not turn out just as I had expected in some areas at least. I must admit that I was hoping to find some good leadership among the youth, since a pastor of almost sixty years of age finds it hard to keep up with the energy and ideas of modern young people, especially since most of them do not easily relate to an older person. I was rather disturbed, therefore, to find that both senior and junior youth groups were looking to me for leadership. Senior youth remained a problem to me, but I must say that I am so glad that I had to take over the juniors. I'm sure those kids did a lot to keep me alive and active - I just had to be, when I was with them, and the willingness of parents to take over the organisation of the recreational side of the meetings was not only a great help to me, but also, I believe, showed the way that such groups need to go. The sight and sound of parents and kids working and playing together did much to warm the cockles of my heart. There should be more of this sort of thing.

I did enjoy thoroughly my work among the residents of the Rest Home and the patients in the hospitals and other nursing homes. I suppose that my own history and experience in the area of illness not only made me an appropriate person for such work, but my work in this area gave me personally a great sense of being where I was needed and could be especially useful to others in times of sickness and frailty. I felt also that I was able to help a number of you in various kinds of trouble through personal counselling and I shall remember certain of you especially well because of these close encounters. I hope you, who will remember, feel that these sessions were as useful, as I hoped and prayed they might be.

I have some very fond memories of personal associations through home visits and private communion with frail and sick people, and, if I may be so bold as to mention just one, since the contact was so unusual, I shall never forget my visits to Clive Paech with brother Ray assisting him to participate in the service of Communion despite his deafness, and our inevitable games of snooker afterwards. I never did manage to become even a reasonable player, despite all my practice there. In this connection I must thank St. Luke's for placing the manse so close to the Bowling Club, where I spent many happy hours of relaxation.

I was happy to be associated with the beginnings of Radio Ettamogah especially remembering the fact that I took the very first official program to be broadcast on Good Friday afternoon, and the hours of time I spent in playing good music and telling the good news of God's grace through Christ in various ways. Speaking of music I count it as one of my disappointments that we did not manage to keep St. Luke's Choir going after its all too brief revival, but being able to take part in the activities of the Albury Choral Society and the Lutheran Zone Choir did compensate to some extent.

All in all I and my wife and daughter remember you with great affection. We loved your most pleasant church, we enjoyed your love and fellowship and we will never forget our seven years with you.

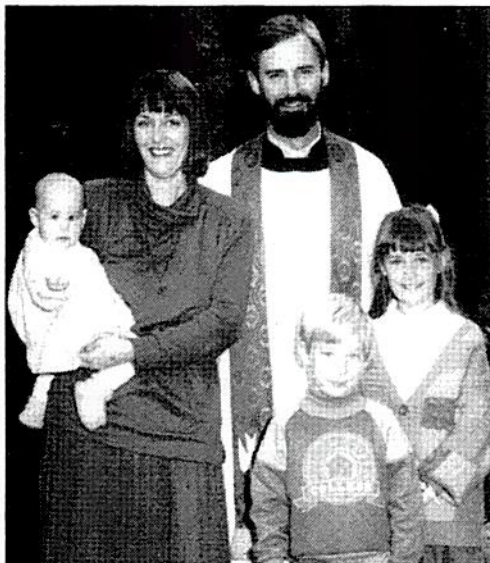
Norm Jaensch

PASTOR P.F. LOCKWOOD

SEPTEMBER 1984 - JULY 1988

As members, former members and former pastors of St. Luke's gather to celebrate fifty years of worship services in Guinea Street, you will be in the thoughts of the Lockwood family. The cold weather of winter will be over, and the new life of spring everywhere apparent. On the other side of the globe we will be experiencing our first American fall. Sarah and Stephen will be trying to learn the Minnesotan dialect and settle into a new school. Helen will be getting involved in campus life at Luther Northwestern Theological Seminary, choir first. When we are more settled, she hopes to leave Claire at the Seminary's "Wee Care" child-minding centre and take further courses. I will be clearing the cobwebs from my mind as I embark on Master of Theology studies, a one-year pre-requisite for doctoral studies.

Today as I write it is Palm Sunday, March 27th, 1988. There can be little doubt we will leave Albury with heavy hearts and happy memories. It has been a great place to live and form friendships. We have always felt a sense of pride in the people of St. Luke's.



*Pastor Peter and Mrs. Helen Lockwood,
Claire, Stephen and Sarah.*

You are a generous people, with big hearts and open homes. We always felt an inviting warmth and friendliness about the place. You always display a remarkable flexibility. Your ready acceptance of The Liturgy - Alternative Form was typical. I am delighted by the support the elders and deacons give the pastor in the work of ministry. That is how it should be. The congregation's leaders are people of maturity and wisdom. You not only minister to one another remarkably well, but you reach out into the community in service, in particular through The Cottage Club, formed in 1986, and your involvement in Meals on Wheels. Another facet of life at St. Luke's that gladdens a pastor's heart is your joy in worship. The volume is on high when you sing the hymns; you listen eagerly and attentively to the readings, sermon, and prayers; and you sing and speak the liturgical responses with gusto.

The congregation has a bright future. If by now a pastor has not yet accepted a call you need not be afraid. The Lord will provide. The one who comes will be the one the Lord wants to come. And the vacancy will only be as long as the Lord feels is necessary and healthy.

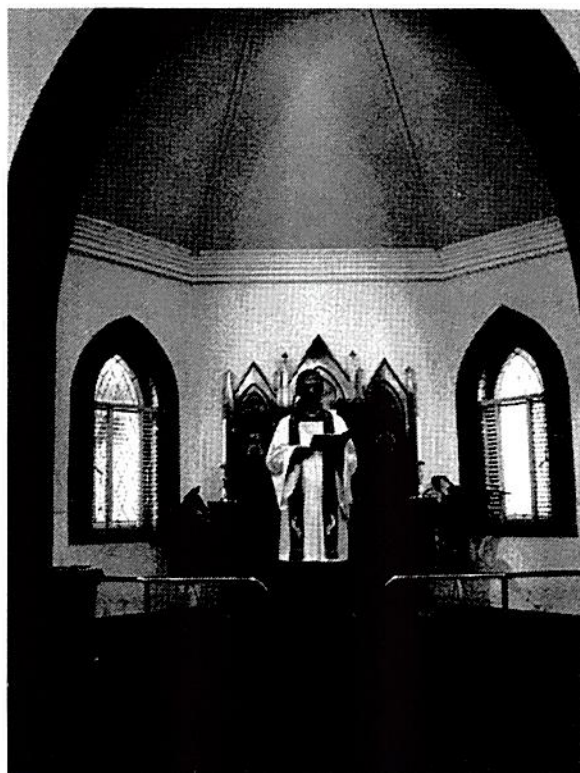
Our Saviour's work is never done. At a special meeting early this year the elders were unanimous in adopting the following areas as top priority for the ministry of the pastor and people of St. Luke's. We have an obligation to minister to the youth, to young families, to divorcees, widows, widowers, and single parents; to provide skilled marriage and family counselling; to continue our ministry to the elderly; and to be involved in mission outreach, capitalising on the never-ending opportunities of the growth centre.

As disciples of Jesus Christ the future can at times be threatening and frightening, but it is always challenging and exciting. My prayer for the people of St. Luke's is verse 1 of Robin Mann's song "Jonathan".

As we step from the edge of morning,
feet can't tell where to take us;
here's a light that will shine for ever,
here's the light that will guide us:

Jesus, please watch over us;
Jesus, please take care of us. (Supplement, 862)

Peter Lockwood



*Pastor Peter Lockwood
at the altar.*

ACTIVITIES WITHIN THE CONGREGATION

St. Luke's Ladies Guild

MOTTO: To live in Christ
To learn of Christ
To have fellowship through Christ.

It was with a certain amount of trepidation that I undertook the task of writing a report on St. Luke's Guild. But I have found that delving through all the old Minute Books has been absolutely fascinating and absorbing.

Firstly I would like to copy out verbatim the Minutes of the Inaugural Meeting of the Guild because the spirit and aims of that meeting have been carried down to the present day.

"A Meeting of the ladies of the Albury St. Luke's Lutheran Congregation was convened by Pastor J.H. Linke on the 6th July, 1938 for the purpose of forming a Ladies Guild within the congregation. The meeting was held at the home of Mr & Mrs P. Ebert.

Pastor opened the meeting by reading the scriptures, Acts 9:36-42. He then explained the aims and purposes of a Ladies Guild. In the Romish Church, he said, there is the organisation of the nuns, and in the Lutheran Church of Europe we have the deaconesses who have dedicated their lives to the services of their fellowmen and especially their fellow christians. As we have no such institutions here in Australia, there is a large scope for a Ladies Guild.

Pastor then enunciated the following points as the programme for the Guild:

- (1) Beautifying the house of worship and sanctuary.
- (2) Works of christian charity
 - (a) Preparation and sending of Christmas cheer and gifts for missions.
 - (b) Aiding the needy and distressed in the congregation.
 - (c) Visiting the sick.

In further explanation the Pastor said that where people were united heart and soul in such noble pursuits, there an ennobling influence was also felt and minor matters, such as afternoon tea, would then cease to be problems endangering the good fellowship of the Guild. Set afternoon tea be partaken of if desired by the majority, but let it be modest as it must in no case create a spirit of rivalry. It is not an essential part of the Guild and could under circumstances even now and again be dispensed with. The concord of the Guild must be preserved even though it means the sacrifice of minor unessential things. If the above works of charity and service remain the foremost aims of the Guild, they will serve to preserve the necessary concord and unity. The Guild will then stand in the service of God and man and will enjoy the blessings of both.

It was therefore unanimously resolved to form the Guild.

Mrs A.A. Grosse who had had previous experience with Guild works in Walla Walla was elected the first president. Miss S. Wiesner was the secretary and Mrs A. Weule became the treasurer.

Pastor Linke then offered up prayer and left the meeting to the ladies who discussed the forthcoming preparations for New Guinea Christmas cheer."

At all following meetings and even down to the present day, Pastor Linke's little lecture on the unimportance of afternoon tea has been taken seriously. Unless there is a special visitor or occasion only biscuits (bought) and tea and coffee are served and nothing detracts from the devotional and business part of the meeting.

The Guild in those early days was small - only 7-10 sisters attending each meeting and after the devotional, time was spent rolling bandages or working for New Guinea cheer. The average collection was approximately 5 shillings to 10 shillings.

As has been said, the Guild was formed in July, 1938 and the following year (1939) saw the start of the Second World War which continued until 1945 and yet there was no mention of this conflict in any of the Minutes. The only indirect reference to the war was when the Guild donated £2-0-0 to the Red Cross, and in 1944 they donated £2-0-0 to the P.O.W. Fund.



Ladies Guild (U.E.L.C.A.) 1966

Back Row: Mrs Joyce Lieschke, Mrs Ivy Terlich, Mrs Linda Richardson, Mrs Sylvia Groch, Mrs Anna Roennfeldt, Mrs Esther Kotzur.

Middle Row: Mrs Dorothea Zweck, Mrs Mavis Harris, Miss Agnes Vonthien, Mrs Sylvia Noske, Mrs Alice Scholz, Mrs Anna Barber, Mrs Lydia Simpfendorfer, Mrs Nancy Piltz, Mrs Helena Paech, Mrs Clara Lieschke, Mrs Hulda Stanton, Mrs May Jacob, Mrs Helena Scholz.

Front Row: Mrs Tonie Grosse, Mrs Alice Weule, Miss Adeline Yensch, Mrs Gertrude Lieschke, Mrs Margarete Sabel, Miss Alice Klemke, Mrs H. Muller, Mrs Phyllis Molkentin.

After the War the Guild's activities continued, and their interests widened. Catering became a major source of income for their funds. The first wedding they catered for was that of Joyce Muller and Keith Neale in 1952. Joyce is still a loyal and hard working member of the Guild. They have catered for other weddings (including silver and golden ones) and birthdays and from 1976 on for 9 years the Guild catered for the monthly Gidcons' Dinner raising over \$6,000 for Guild projects.

The 25th Anniversary of the St. Luke's Ladies' Guild was celebrated with a social on 6th July, 1963, with Pastor Bartholomaeus being the officiating minister of the time. Three of the original members were present at this celebration, Mrs A.A. Grosse, Mrs C.W. Scholz and Miss S. Wiesner.

The next important event in the life of the Guild was the amalgamation of the two Lutheran Churches in Australia and that of course meant the amalgamation of the Guilds. The disbanding Convention was held at Temora on Sunday 27th November, 1966 at 1pm, and at 2.30pm, the L.W.A. N.S.W. District was formed. The Christmas Social at St. Luke's that year was cancelled and instead a Thanksgiving Meeting was held.

The early St. Luke's Guild was disbanded on 1st February, 1967 under the guidance of Pastor E. Sabel and then re-formed in conjunction with the Swift Street Lutheran Ladies Guild with Mrs E. Gray as the first President of this united Guild. She is still our hardworking Treasurer. A specially composed hymn "What a Privilege God gives us" was sung at this meeting. That year our Guild also hosted the First Lutheran Women's Convention on 12th April, 1967.

Since those days of rejoicing, the Guild has progressed from strength to strength. Our members are not young in years (the average age would be close to 70 years) but we are young in spirit and endeavour. Our ladies are the Marthas of the Parable but are also the Marys in that they love to listen to the devotions which start each meeting. We have been truly blessed with our

Pastors who give us such inspiring and thought provoking messages and I do not think we are far from the original aims of the Guild as set out by Pastor Linke.

As for the future, I can safely sum up the attitude of the ladies in one word - "Outreach".

We wish to spread our influence and God's love through Guild members to the congregation; to the youth; to the Evening Fellowship; and through all these channels to the people of Albury and surrounding district. To that end we interest ourselves in the Lutheran Rest Home financially and by visitations, we take part in the Meals on Wheels programme; members are active in the U.P.A. (United Protestant Association) Homes in Lavington; we support the Leprosy Mission in Wodonga; we take part in Inter-Church Social Afternoons; stalls in Olive Street and in the last two years have run the Cottage Club for the aged each Monday in St. Luke's Hall.

Present office bearers are:

President: Mrs Elizabeth Bartsch

Secretary: Mrs Margaret Frohling

Treasurer: Mrs Stella Gray

Over the last fifty years of the Guild, God has truly blessed us and to Him be the glory, Praise and Thanks.

Deo Gratias!

Margaret S. Frohling



Ladies Guild Executive 1988

*Mrs Elizabeth Bartsch (President), Mrs Stella Gray (Treasurer),
Miss Esther Simpfendorfer (Assistant Secretary), Mrs Bertha Koschitzke (Assistant Treasurer),
Mrs Inga Krain (Vice-President).*

Absent: Mrs Irma Seidel (Second Vice-President), Mrs Margaret Frohling (Secretary).

Evening Fellowship

To cater for mothers with young children or ladies who are working during the day, a meeting was held on 13th July, 1981 to form an evening group of the women of St. Luke's to enjoy fellowship in study and service. This meeting was held in the manse, hosted by Pastor and Mrs Jaensch, and set the tone for future meetings to be held in private homes.

Seven ladies attended with others indicating interest. Mrs Margaret Barnett was chosen to be the chair-lady, with Mrs Marion Jacob as the secretary-treasurer. It was agreed to work in close fellowship with the regular Ladies Guild.

Some very up-lifting topics have been presented by the Pastors and interesting activities have been held.

This group assists with raising funds for the Lutheran Rest Home by having an annual soup and sandwich luncheon and also by manning a stall at the Rest Home fetes, and by making lamingtons.

Current office bearers are: President: Mrs Helen Gabriel

Secretary/Treasurer: Mrs Yvonne Kotzur.

Sunday School

Until October 1927 Pastor Stolz held Sunday School classes in connection with the services, but then Misses A. Arnold, G. and L. Wiggins and S. Lieschke were appointed as teachers and classes were held fortnightly. These lapsed after a time but at Easter 1934, Pastor Stolz again invited parents to send their children and Miss G. Terlich was appointed as teacher, later assisted by her sister, Miss F. Terlich.

From then the Sunday School has grown considerably and many competent and loyal members have given of their time to nurture the young children of the congregation. Two teams of five teachers rotate on a monthly basis.

Long serving superintendents have been Mr. Charlie Scholz, Mr. Lou Wenke and Miss Lois Simpfordorfer. The present superintendent is Mrs. Dorothy Dunkerton.

Of recent years attendances have decreased but the present enrolment stands at approx. 70 children, even though attendances do not reflect this. Since the purchase of the corner house in 1971 some of the classes are held in the House which has eased the space problem in the hall.

In January 1966 the first Vacation Bible School was held and in 1968, 154 children were enrolled, with the highest attendance on any one day being 133. Fifty three volunteers helped for the two weeks. But after a few years these Vacation Bible Schools were discontinued.

The Sunday School children support various projects through their offerings, including the Sunday School by Mail, Port Macquarie Sunday School, Tree Planting in Mauritania and the Wagga Wagga Lutheran School.

Highlights of the year are the annual picnic, of recent years held at Jindera Lutheran School, and the traditional Christmas Eve Service.

The present teachers are: Mrs Dorothy Dunkerton (Superintendent), Mrs Diana Ortlipp (Treasurer), Miss Diane Rowe, Mrs Verna Wallace, Mrs Pat Salzke, Mrs Kay Ellis, Mrs Helen Gabriel, Mrs Lynne Cox, Mrs Janet Sims and Mr Ron Asquith.



Sunday School Teachers - 1988

*Mrs. Pat Salzke, Mrs. Helen Gabriel, Mrs. Verna Wallace, Mrs. Kay Ellis, Mrs. Janet Sims,
Miss Diane Rowe, Mrs. Lynne Cox, Mrs. Dorothy Dunkerton (Superintendent).*

Absent: Mrs. Diana Ortlipp, Mr. Ron Asquith.

Lutheran Youth

The first meeting of the youth of the congregation was held on 28th May, 1938 when a Lutheran Young People's Society (Y.P.S.) was formed, Mr Harry Cook was the first chairman and Miss Elsie Stanton (now Mrs J. Biar) was the secretary. Harry served for two years and then joined the Army.

The form of the meetings was that a Bible passage was read and discussed, then hymn practice was held, followed by items rendered by the members. Amongst these were 'cello solos by Pastor Linke and piano renditions by Miss Madge Roxburgh.

The annual subscription was one shilling and six pence. Names gleaned from the minute book indicate that the following were amongst the original members: Pastor Linke, Harry and Edna Cook, Mr and Mrs Lou Wenke, Esther Terlich, Percy Terlich, Allan Terlich, Elsie Stanton, Doris Stanton, Dorothy Scholz, Rita Miller, Daisy Rohrlach, Alec Scholz and Madge Roxburgh.

By 1943 a total of twenty members was reached.

Meetings were held in the church, but for special occasions such as twenty-first birthday parties or socials Pastor and Mrs Muetzelfeldt kindly offered the use of the manse in Park Avenue. The society was very grateful for this but they felt that a hall was needed. So in 1945 they began a hall building fund. This culminated with the hall at the rear of the church being dedicated by Pastor Muetzelfeldt on 6th November, 1949.

It is interesting to read of the entertainment and activities of the Young People's Society, during the earlier years.

Items were given at each meeting, mock-conventions and debates were held, socials were held with various other associations such as Jindera - Bethel, Walla Walla, Henty and Alma Park, also Wodonga Luther League and with Methodist, Baptist and Church of England Associations from Albury.

Concerts and Talent Quests were annual events for raising money. Probably a number of us still remember the Saturday afternoon bike rides to the Waterworks as well as the ritual trip to the snow at Mt. Buffalo each winter.

For quite a number of years it was the accepted procedure that the members of the Y.P.S. helped both with the regular cleaning of the church and with the spring-cleaning of it. One year a fine of two shillings was imposed for non-attendance at the spring-cleaning.

Also the members regularly did hospital visiting with both male and female members participating cheerfully.

In 1956 the Youth Society purchased a second-hand duplicator to help in the production of the monthly magazine, Talkabout. Lorna Koetz was the editor, with Roy Galvin and Norman Lieschke sub-editors. Also the Society presented six pencil pine trees that were planted between the church and the manse.

A great occasion was the Australia-wide Youth Assembly held in Albury in August 1958. Jindera-Bethel Society assisted the Albury members with a welcome social, and the Sunday church service was held in the Palais Royal.

After the amalgamation of the two Lutheran churches the name of the society was changed to Lutheran Youth Fellowship. In 1967 the Lavington young folk formed their own fellowship so St. Luke's young people divided into two groups.

The Junior Youth Fellowship catered for the 11 to 15 age group. The first chairman was Graham Spence, vice-chairman Jeanette Verloop, secretary Beverley Scholz, assistant secretary Vicki Klein, and treasurer Jennifer Moore. Attendance at the first meeting was 30.

The first Junior Youth camp was held at the Hume Weir in December 1967 with Pastor Sabel as camp leader assisted by the senior youth.

In 1980 the Junior Youth began having their meetings in private homes with the parents taking responsibility for arranging the programme for each meeting. This system has worked well and at present there are approx. 12 — 18 eager members, who meet regularly under the guidance of Mrs Dorothy Dunkerton. They participate in such activities as treasure-hunts, barbeques, hikes and sausage sizzles.

The Senior Youth Fellowship began with 22 members. Chairman was V. Abelite, vice chairman John Schmidt, secretary Maria Jacob, assistant secretary Monica Heinrichs and treasurer Ron Paech. Attendance at the first meeting was 22 but soon this dwindled considerably and in the July 1972 Lutheran Light there is a report stating that 9 of the more enthusiastic members are trying hard to get the Albury-Lavington group on its feet. For a few years attendances again rose to around 20 including non-Lutherans and such activities as car rallies (won on one occasion by the only girl driver), progressive teas, ten-pin bowling, scrabble championships, boat-rides, disco at Walla Walla and a football challenge with Wangaratta youth took place.

The Senior Youth assisted the congregation by painting the fence of the corner property and again we read of them helping with the church spring-cleaning for a short period.

In 1979 Mr Ian Lange became part-time parish worker and his help with the youth was appreciated. Once again the Senior youth were struggling to keep up the attendance. And on 18th May, 1983 the sudden death of Stephen Neale brought great sorrow to the Fellowship as well as to all members of the congregation. Stephen was vice-president at the time of his death and had been very enthusiastic in youth activities. A Memorial Library has been formed in memory of him. In 1987 a Gap Worker (Giraffe Associate Programme) Mr Neville Hermann from Victoria was appointed to work part-time with the Albury Youth for one year and his presence revitalized the meetings.

Attendance still is disappointing but those who take part are very dedicated and enthusiastic.

The present executive consists of Fiona Dunkerton, Nigel and Simon Severin, David McCracken, Katrina Laughton and Tanya Grabow.

May these young folk, both Seniors and Juniors, continue to honour their Lord by gathering together in Christian Fellowship.



Senior Youth Executive - 1988

Katrina Laughton, Janine Friedrich, Fiona Dunkerton, Tanya Grabow.

Absent: Nigel Severin, Simon Severin, David McCracken.

Music in the Church

Right from when services first were held in Albury, St. Luke's has been privileged in having had a number of well-qualified organists to provide the music for the worship services.

When the congregation was officially formed in 1927, Mr F. Schnelle was elected as pianist and Mr Wiesner was in charge of the choir. Soon after, Mrs Annemarie Stolz assisted with the playing and in 1930 Mrs Ada Koetz was elected as an additional pianist.

In 1939, after the building of the church, Mrs Koetz gave a demonstration playing of a second-hand organ offered by Mr Harms, and this instrument was then purchased for £35.

On 6th December, 1959 a new Miller Electronic Organ was dedicated by Pastor Muetzelfeldt and this was replaced in 1967 with a Conn Rhapsody Organ, which was donated anonymously. Mr W. Etscheid, headmaster of the Henty Lutheran School, was the guest organist for the dedication on 26th November, 1967.

In 1977 a piano for the hall was purchased, with the Ladies Guild donating more than half of the cost.

Long serving organists have been Mrs Ada Koetz, Miss Lorna Koetz, Mrs Ivy Terlich and Miss Ora Simpfendorfer.

The present organists are Mr Trevor Severin, Mrs Coral Gale, Miss Ivy Salzke, Mrs Ivy Terlich, Miss Ora Simpfendorfer and Miss Joanne Gale. Another group, Mrs Edna Galvin, Miss Ora Simpfendorfer, Mrs Margaret Frohling, Miss Debbie Wallace and Miss Lois Simpfendorfer provide the music for the Lutheran Rest Home services.

The choir unfortunately has had a rather intermittent performance. From performing the Hallelujah Chorus with Mr Sam Singe as conductor it dwindled until in 1946 Mr Clive Paech was asked to re-form the choir and act as conductor. Then in 1967, after the amalgamation of the two Lutheran churches a resolution was passed that a committee be elected to establish a choir with Mr Bryan Paech as conductor. And in 1977 it was started once again with Pastor Norman Jaensch as conductor, and at the present time Mrs Helen Lockwood and Mrs Edna Galvin gather a few singers together for special occasions.

A Children's Choir was formed in 1970. Twenty young singers gathered under the guidance of Mrs. Vera Briese and Mrs Edna Galvin. And recently Mrs. Helen Lockwood and Mrs. Coral Gale have again organised a children's choir and a band to play for the contemporary services.

May we all continue to sing joyfully to the Lord.

Mission Workers

The following members of St. Luke's entered service in the various Mission fields of the Lutheran Church of Australia.

- 1952 Ruth Simpfendorfer (Scheer) as a nurse at Hermannsburg N.T.
- 1953 Esther Simpfendorfer as a teacher at Hermannsburg, N.T. and later Welfare Worker at Alice Springs.
- 1959 Bryan Paech as book-keeper at Hermannsburg N.T.
- 1959 Vida Simpfendorfer (Faulkner) as clerk at Lae, New Guinea.
- 1961 Grace Kotzur (Henderson) for domestic service in New Guinea.
- 1964 Marie Simpfendorfer (Hill) as a teacher at Hermannsburg, N.T.
- 1969 Anita Cirulis as a teacher in New Guinea.

- 1970 Alatheia Pietsch as Matron at Katherine Lehmann School for missionary children in New Guinea.
- 1972 Ted and Verlie Lovelock, in New Guinea to assist in training of native personnel in mechanical work.
- 1976 Mark Thiel began a Parish Worker's Course at Lutheran Teachers' College, S.A., after which he served at Port Lincoln, S.A., Yalata Mission, S.A., Aboriginal Community, Thebarton, S.A. and currently is in charge of spiritual work at Areyonga Mission, N.T.



Ordained Ministry

- 1956 Keith Scholz entered Immanuel Seminary and since being ordained in 1960 he has served the church at Gin Gin, Qld., Dalby, Qld., Wangaratta, Vic., Dandenong, Vic., Woodridge-Bethania, Qld., McLaren Vale, S.A. and now Port Macquarie, N.S.W.

Keith Scholz (and son Sam).

Lutheran School Teachers

- 1976 Lynette Thiel began training at Lutheran Teachers' College, Adelaide and then taught at Biloela, Qld., and Ringwood, V. Lutheran Primary Schools. Recently she has toured America with Lutheran Youth Encounter.
- Helen Schutz (Gabriel), prior to joining St. Luke's, taught at Hermannsburg Mission, N.T. and in Lutheran Primary Schools.
- Marie Simpfendorfer (Hill) and Tracy Heinjus (Scully) have also taught at Lutheran kindergartens and Primary Schools.

Lutheran World Federation

St. Luke's has provided staff for the unique department of Lutheran World Federation, with Misses Lorna Koetz and Ora Simpfendorfer and Mrs Margaret Bruveris working in the office for many years. And by coming into their positions as Australian Directors of L.W.F., Mr Brian Neldner and Mr Sid Bartsch have both been a considerable asset to St. Luke's.

Church Officials and Committees

in 1988

Chairman:
Vice-chairman:
Secretary:
Treasurer:
Assistant Treasurer:

Mr Roy Galvin
Mr George Krain
Miss Edna Barber
Miss Jean Roennfeldt
Miss Edna Barber



Church Council – 1988

Mr. Roy Galvin, Mr. Edgar Nelson, Miss Jean Roennfeldt, Mr. George Krain and Miss Edna Barber.

ELDERS:

Mr Mack Burdack
Mr Edgar Nelson
Mr Allan Seidel

Mr Given Friedrich
Mr Brian Walter
Mr Ian Kotzur



Church Elders – 1988

Mr. Allan Seidel, Mr. Edgar Nelson (Chairman), Mr. Brian Walter, Mr. Ian Kotzur and Mr. Given Friedrich

LAY-READERS:

Mr Mack Burdack

Mr Ken Scholz

Mr Leo Nelson

CONGREGATIONAL LIFE COMMITTEE:

Mrs Bette Franke

Mrs Heidi Laughton

Mr Ian Kotzur

Mrs Marion Jacob

Mrs Joyce Neale

Mr Jim Kernaghan

WELFARE COMMITTEE:

Mr Mack Burdack

Mr Leo Nelson

Mr Darryl Gabriel

Peter and Annette Widdison

Mrs Heather Heinjus

Miss Lois Simpfendorfer

Martin and Heather Schilg

SOCIAL ACTIVITIES COMMITTEE:

Mr Geoff McFarland

Mrs Dorothy McFarland

Mrs Marion Jacob

Mr Leo Nelson

There have been many faithful and devoted office-bearers and workers amongst the members of St. Luke's. We would like to mention many of the families; but one particular name, that of Mr C.W. (Charlie) Scholz, appears right through from when the congregation first was formed until his death in 1968. He held various positions including treasurer, secretary, trustee and Sunday School teacher.

This has been followed by his son, Ken, also filling a number of positions over many years including assistant secretary, treasurer, trustee, elder and lay-reader. Ken has also assisted in the publication of this history.

Mr Chris Koetz with his wife, Ada, and family, Lorna, Peter and Valerie, also contributed in many ways towards St. Luke's, before moving to Wollongong.

And mention must be made of our present chairman, Mr Roy Galvin, who has been involved in numerous church activities right from when he came into St. Luke's in 1955.

To God be the glory,
Great things He has done!

Praise the Lord!
Praise the Lord, O my soul!
Psalm 146:1

Trinity Lutheran Church

OF THE EVANGELICAL LUTHERAN CHURCH OF AUSTRALIA

SWIFT STREET, ALBURY.



Pastor Rudolph

In recognition of those members who transferred from Trinity Congregation to St. Luke's after the amalgamation of the E.L.C.A. and the U.E.L.C.A. we give a brief history of Trinity Church.

The first services in Albury were conducted in the early 1920's by Pastor E.D. Eckert, who was in charge of St. John's Church at Jindera.

Mrs Frieda Friedrich and Mrs Vera Briese, now members of St. Luke's, remember that these services were held in Malcolm's Hall, Kiewa Street; and that the Jindera choir, of which they were members, attended the services to assist with the singing.

On the arrival in 1927 of Pastor Ph. Rudolph many changes took place. A parsonage was purchased in Olive Street, Albury.

Coming from South Australia to a town which had no organised congregation, Pastor Rudolph and his wife worked together until in September 1928 they had completed negotiations and took over the Congregational Church in Swift Street. It was renovated and new furniture installed.

Earlier, in March 1928 a congregation had been organised and regular services commenced. But it was a private syndicate of mission-minded members of St. John's Church at Jindera, that made possible the purchase of both the church and the manse.

After 28 memory-packed years as minister of Albury, Jindera, Wodonga and Happy Valley (now Glenroy) congregations, Pastor Rudolph retired in 1955 and he and his wife left to reside in Adelaide.

Pastor T.P. Harms came as locum tenens until the arrival of Pastor C.W. Appelt who then served Trinity Congregation from 1955 to 1965, when he accepted a call to Glenroy, Victoria.

In 1963 due to a re-alignment Jindera Congregation joined with Burrumbuttock and Gerogery.

Pastor L.P. Altus was the minister from 1965 until May 1966 when, after the amalgamation of the two Lutheran Churches, he accepted a call to Wodonga congregation which had severed connections with Albury. Baptised members of Trinity at that stage numbered approximately 250.

From the minute book we read: "Trinity Lutheran Congregation was officially closed by Rev. W.R. Paech on June 12th, 1966. The text was from Numbers 6: 24-26 - "The Lord bless thee and keep thee; the Lord make His face shine upon thee and be gracious unto thee. The Lord lift up His countenance upon thee and give thee peace."

However Trinity Church was used for regular worship services by the combined congregation whilst extensions were built onto St. Luke's Church.

DISPOSAL OF PROPERTY

The furnishings were dispersed amongst the surrounding congregations - Corowa, Wodonga, Glenroy, Lavington and Albury. The altar and pulpit were given to the church at Bendigo, where Pastor Theo Harms was serving at that time.

However, it was some years before the building and the block of land were finally disposed of. Investigations were made re using the building for a kindergarten but in March 1968 it was agreed to auction the property with a reserve price. The only tender, that of Stradford Motors, was below this so the Trustees of the Lutheran Church of Australia, N.S.W. District, took over the property for \$18,400. The trustees of the Congregation were Messrs E.F.W. Greschke and H.T. Schmidt. Once again, a Jindera family, who were anxious not to see this property lost to the church, loaned the money for the sale.

The dispersal of funds was made on a communicant basis of those who transferred to the other congregations.

Again from the minute book we quote: "28 August, 1968 - from this date Trinity Congregation constitutionally ceases to exist - all books officially closed."

Signed: S. Mibus - Chairman

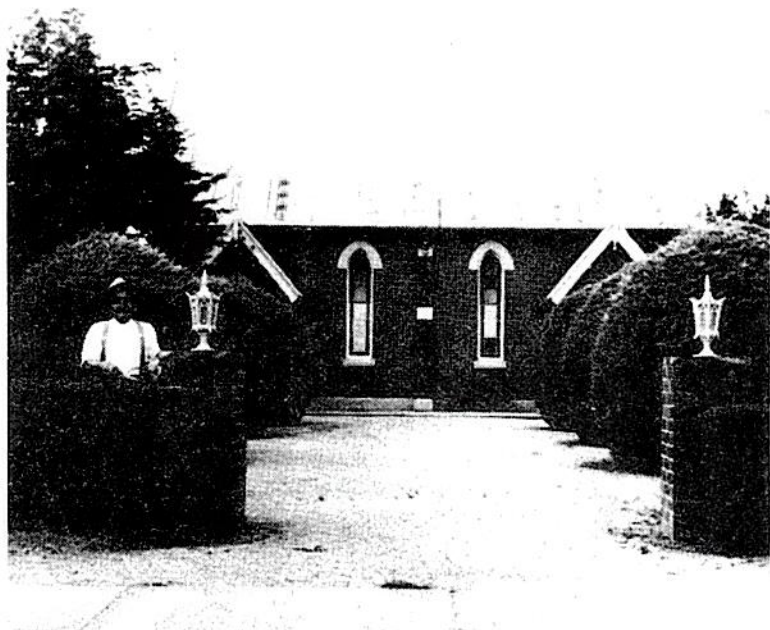
H.T. Schmidt - Secretary

In the meantime the manse of Trinity had been used for the Lavington parish. but in September 1973 it was sold for \$18,500. Half the proceeds of this sale went into the establishment of the new St. Peter's manse at Lavington.

Also in 1973, after investigation there seemed to be no real use, present or future, to which the property in Swift Street could be profitably put, so it was also sold for \$30,000 to Stradford Motors. This money was placed into the Revolving Funds of the N.S.W. District of the Lutheran Church to aid the Mission expansion of the church.

Thus the church building was eventually demolished.

But we give thanks that the spirit of Trinity Congregation continues through the members who transferred to other congregations.



Trinity Church

ACKNOWLEDGEMENTS

Information in this booklet has been obtained from church minute books and publications. Special thanks go to those who contributed articles and to all who assisted in any way.

(Our humble apologies for any errors or omissions.)

