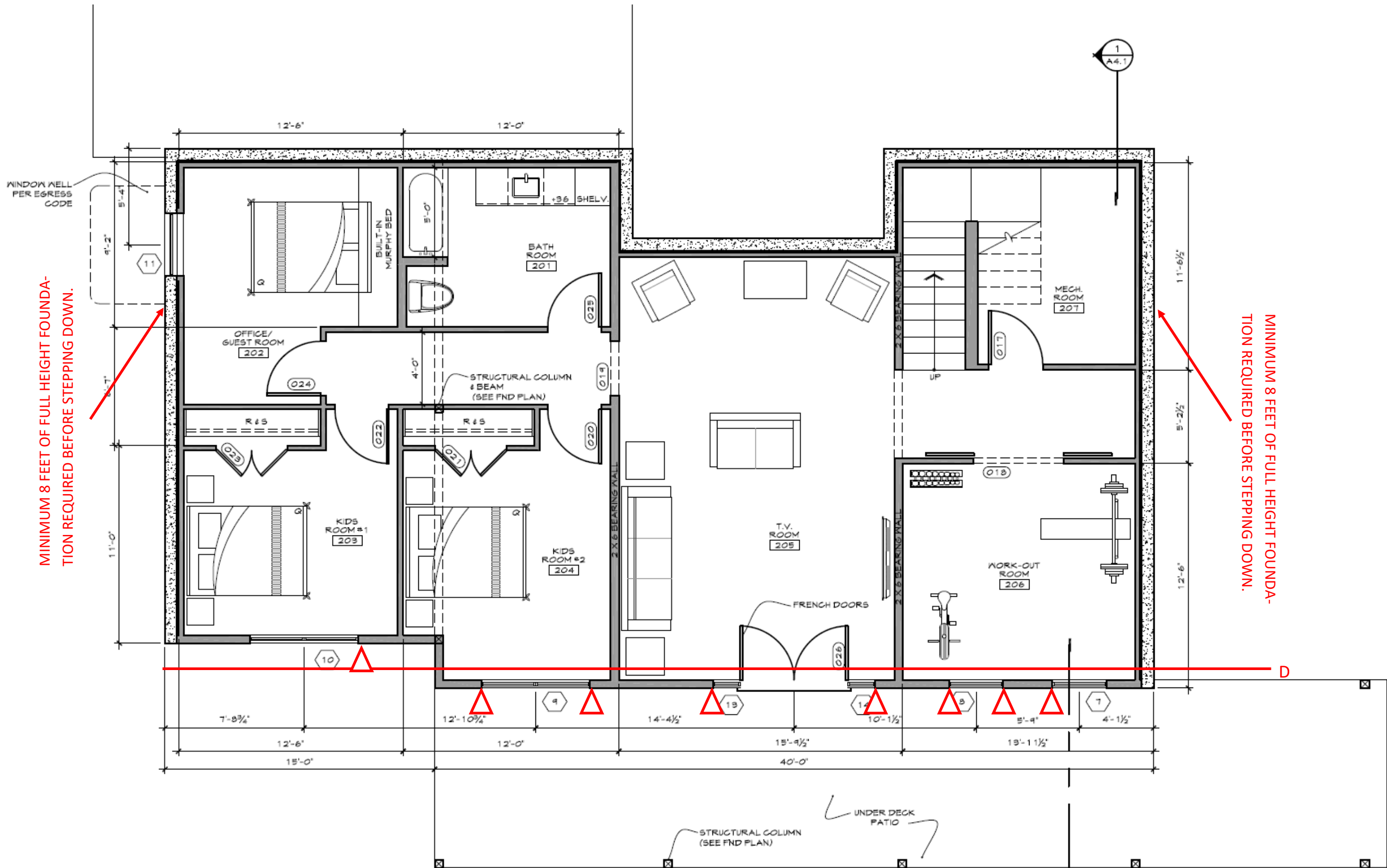


**1** MAIN LEVEL FLOOR PLAN  
SCALE: 1/4"=1'-0"

Project		Date:
Braced Wall Line	Shearwall Notes	
1	OK as drawn	
2	HDU11s where marked into 6X posts, attached to a 1" allthread with nut/washer/nut at the bottom, minimum 18 inch embedment. Increase nailing to 4" o.c. at exterior sheathing edges. Block all horizontal joints with 2X.	
3	Increase nailing to 4" o.c. at exterior sheathing edges. Block all horizontal joints with 2X.	
A	HDU11 at each end where marked into 6X solid corner, attached to a 1" allthread with nut/washer/nut at the bottom, minimum 18 inch embedment. Block all horizontal joints with 2X.	
B	HDU11 at each end where marked into 6X solid corner, attached to a 1" allthread with nut/washer/nut at the bottom, minimum 18 inch embedment. Sheet one side of garage/house common wall w/ 7/16" OSB and increase nailing to 4" o.c. at sheathing edges. Block all horizontal joints with 2X.	
C	Double Simpson MST72 at each marked location (16 total) between floors. Increase nailing to 3" o.c at exterior sheathing joints. Block all horizontal joints with 2X.	
D	HDU8s where marked into 4X posts, attached to a 7/8" allthread with nut/washer/nut at the bottom, minimum 18 inch embedment. Increase nailing to 4" o.c. at exterior sheathing edges. Block all horizontal joints with 2X.	



1 **BASEMENT FLOOR PLAN**  
 A2.1 SCALE: 1/4"=1'-0"

