

Wisdom & Associates, Inc.

PO Box 3413
Kenai, Alaska 99611
907-283-0629

7984 Kenai Spur Highway
Kenai, Alaska 99611

UPC Requirements

The state of Alaska has adopted the Uniform Plumbing Code. This is a list of common issues that we encounter during code inspections. This is not a full list of all requirement in the building code, contact us if you have questions.

312.9 Nail Plates

- Plastic or copper pipe protected within 1" of exposed framing edge
- Minimum 18 gauge plates
- Plates extend 1.5" beyond outside of piping

312.10 Sleeves

- Piping through concrete or masonry walls or floors must be sleeved

312.10.3 Firewalls

- Annular space around piping passing through fire walls sealed (garage/house common walls)

314.1 Trenches

- Piping cannot be buried parallel to the footing within the "cone of compression"
- Piping must be above 45° from the bottom exterior edges of the footing

402.5 Sanitation Requirements

- Toilets 30" minimum width, 24" in front
- Lavs 24" in front

408.6 Shower Compartments

- Minimum 1024 square inches
- Minimum 30 inch circle
- Minimum 70 inches in height

409.6 Whirlpool Access

- Whirlpool tubs must have removable panel for access

507.2 Seismic

- Seismic categories C, D, E, and F require earthquake strapping, including storage only tanks
- Straps on upper and lower third of tank
- 4" above controls

507.13 Garages

- Appliances in garages, appliances in spaces off of garage that are not part of the dwelling unit
- Burner must be elevated 18" off of the floor
- Appliances protected from vehicular impact

509.8.1 Mechanical Draft Vents

- Mechanical draft vent systems must be at least 3 feet above any forced air inlet within 10 feet
- Must terminate 4 feet below, 4 feet horizontally from, or 1 foot above any openings into the building
- Must be 24 inches above grade

509.8.2 Direct Vent Appliances

- <10,000 BTU/h – 6 inches from openings
- 10,000 < 50,000 BTU/h 9 inches from openings
- >50,000 BTU/h 12 inches from openings
- Must be 24 inches above grade

603.4.4 Connections

- Direct connection between potable water piping and sewer not permitted
- Air gap twice outlet pipe diameter, no less than 1"
- Direct connection to inlet side of trap allowed if vacuum breaker above flood rim level is installed (Dishwasher air gap)

608.4&5 Pressure Relief Valves

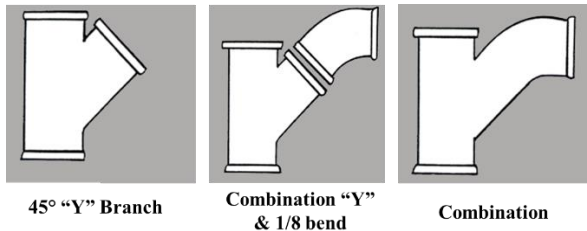
- No part of pipe trapped
- No part of pipe subject to freezing
- No threads on terminal end
- Cannot discharge into drain pan
- Must be equal to size of valve outlet
- Must point down
- Must be rated to the temperature of the system
- Must discharge through an air gap to drainage systems
- Discharge between 6" and 24"
- Discharge cannot cause personal injury or structural damage
- Approved materials: galvanized steel, hard copper, CPVC

706.2 Horizontal Drainage to Vertical Drainage

- 45° wyes
- 60° wyes
- Combination wyes
- Sanitary tee
- Sanitary tapped tee
- Or equivalent
- Not more than one fitting on the same level unless discharge cannot travel across
- Double san tee may be used is largest inlet is 2 pipe sizes smaller than the barrel

706.3 & 4 Horizontal & Vertical Drainage to Horizontal Drainage

- 45° wye branches
- Combination wye and 1/8 bend
- Or equivalent



707.4 Cleanouts

- Upper terminal of each horizontal drainage pipe
- Each run of more than 100 feet
- Changes in direction exceeding 135°

712.2-3 Testing

- Water test - 10' head of water for 15 minutes
- Air test - 5 psi for 15 minutes

905.1-2 Vent Grading

- No drops or sags
- Graded back to drainage piping

905.3 Vent Rise

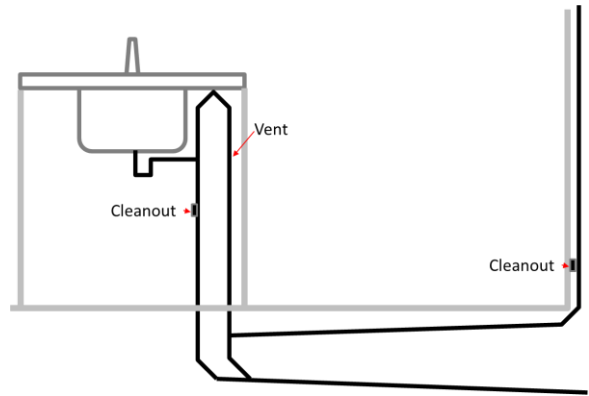
- Must rise 6" above flood rim level before horizontal offset
- If not possible structurally, then drainage fittings must be used

906.7 Frost Closure

- Minimum 2" diameter
- Minimum 10" above roof

909.1 Island Venting

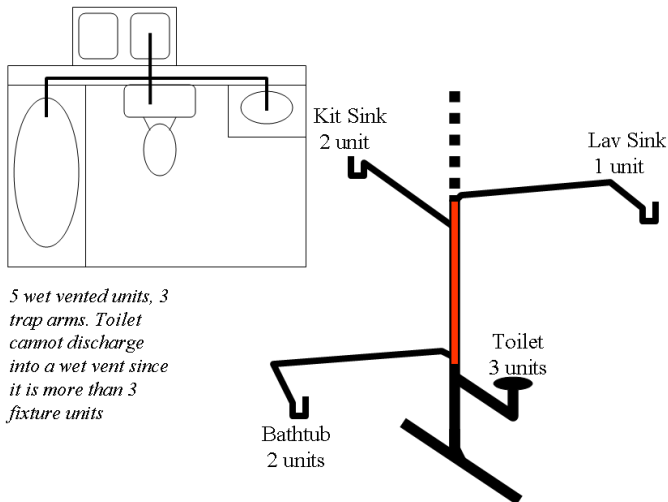
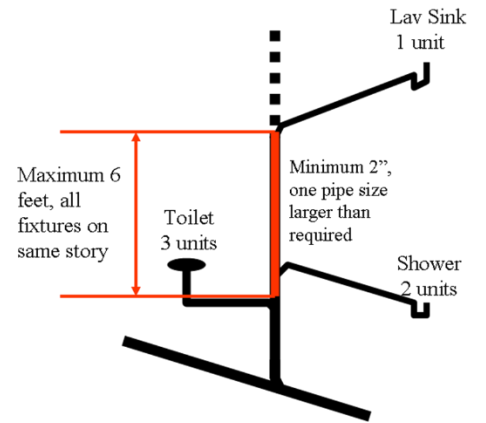
- Only for island fixtures
- Vent extends as high as possible
- Foot vent connects to closest vertical vent stack
- Accessible cleanout in vertical portion of foot vent



908.1-3 Vertical Wet Venting

- Allowed if:
- Fixtures located on the same story
- Maximum 4 - 1 to 2 unit traps
- Developed length less than 6 feet
- Wet vented waste pipe sections 1 pipe size larger
- Wet vented waste pipe sections minimum 2"

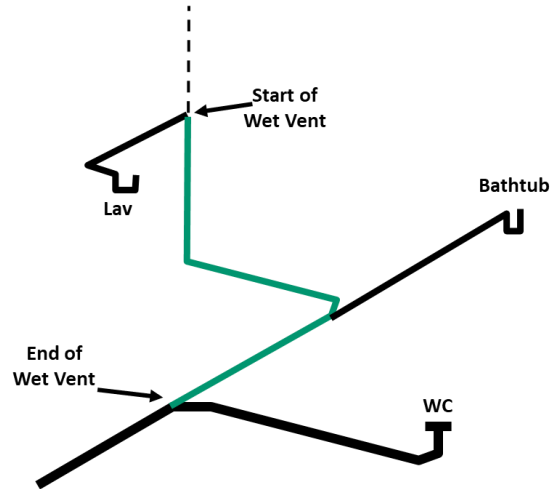
Less than four - one or two unit trap arms discharging into wet vented portion of piping, serving as a vent for a fifth fixture. Toilet is using wet vent, but is not discharging into wet vent.



5 wet vented units, 3 trap arms. Toilet cannot discharge into a wet vent since it is more than 3 fixture units

909.1 Horizontal Wet Vent

- Allowed for bathroom groups if:
- Water closet trap arm downstream
- Only one wet vent fixture above the dry vent
- Minimum 2" for 4 DFUs, 3" for 5 DFUs or more



1003.3 Trap Arm Lengths

Trap Arm Pipe Diameter (inches)	Distance Trap To Vent Minimum (inches)	Length Maximum (inches)
1.25	2.5	30
1.5	3	42
2	4	60
3	6	72
4	8	120
Exceeding 4	2X diameter	120

¹ Maintain 1/4 inch per foot slope
² The developed length between the trap of a water closet or similar fixture (measured from the top of the closet flange to the inner edge of the vent) and its vent shall not exceed 6 feet

1213.3 Gas Outlets

- Secured in place
- Not located behind doors
- Accessible to wrenches without straining pipe
- Minimum 1" unthreaded pipe through ceilings or walls
- Minimum 2" unthreaded pipe through floors or slabs

1210.9 Gas Testing

- Minimum 15 minutes
- Minimum 10 psi

This is not a complete list, please let us know if you have any questions!

Sincerely
 Robert Moss
 Wisdom and Associates, Inc.
 Cell: 907-398-4372