

SPECGUIDE

Products & Technical Information



COMMERCIAL • INDUSTRIAL • RESIDENTIAL
RESTORATION • INFRASTRUCTURE

SpecGuide

CONTENTS

Section	Cleaners/Strippers & Admixtures	
01	Whether you need to remove grease, grime, or other contaminants from your concrete surface, soften and remove concrete buildup from your tools, brighten and rejuvenate existing sealer surfaces , or simply strip away deteriorated layers , SpecChem has a formula. Our family of Cleaners & Strippers includes a variety of products that meet these application needs and more, including low VOC versions. SpecChem accelerating admixtures offer contractors flexibility in the field.	06
Section	Curing Compounds and Cure & Sealers	
02	Curing and cure & seal compounds do more than just enhance the appearance of concrete surfaces. Our line of water-based, solvent-based cures & sealers improve concrete hydration, offer protection, and improve the general durability of concrete surfaces.	08
Section	Decorative & Protective Sealers	
03	Each of our protective sealers are specially formulated to meet a variety of applications and needs . Whatever your needs, SpecChem has engineered a formula to add protection and durability to your exposed aggregate, natural stone, brick, quarry tile, terrazzo, and other concrete surfaces meeting the most stringent VOC regulations .	14
Section	Dry Shake Hardeners & Toppings	
04	A mix of finely graded, non-metallic quartz aggregates, plasticizer and cement binder that integrates into the concrete and produces an abrasion-resistant surface , perfect for lobbies, waiting rooms, showrooms and service centers, factory and warehouse, and any interior or exterior floor benefitting from increased wear resistance . Color options available upon request.	19
Section	Evaporation Retarders	
05	Maintaining surface moisture on concrete floors, slabs, and repairs in extreme and inclement weather conditions can be challenging. SpecChem Evaporation Retarders are designed to comply with ACI 302 and reduce rapid moisture loss, preventing plastic shrinkage and cracking - without affecting the adhesion of curing compounds and other treatments .	21
Section	Form Release Agents	
06	We manufacture an extensive line of release agents and supporting products formulated to improve the release of formwork , reduce concrete buildup on forms and liners, protect formwork against rust, and reduce necessary cleanup.	22
Section	Grouts & Anchoring Cements	
07	Our cement-based, high performance, non-shrink grouts are developed to provide strength and durability in a variety of specialty applications. From general, high-strength, multi-purpose grouting to flowable, non-shrink, precision applications; from metallic grouts to pumpable, wash-out resistant grouts designed for underwater use, SpecChem has a grout formulated to exceed ASTM and CRD standards .	27
Section	Latex Bonding Agents	
08	Our acrylic bonding agents are formulated to provide superior adhesion and increased durability of concrete, masonry, stucco, terrazzo, and Portland cement-sand mixes to horizontal and vertical concrete and more.	30
Section	Liquid Hardeners	
09	Our premium line of liquid hardeners and guards were created to provide the ultimate in densifying, hardening and protection for your concrete surfaces. Floors in factories, warehouses, schools, hospitals, breweries, food processing plants, service garages, and more will last longer, cost less to maintain, and resist dusting for years after application.	31

Section	Paving Curing Compounds	
10	Applications ranging from highways, airports, bridge decks and parking lots to city streets, curbs and gutters, all require curing compounds formulated to cure for strong, durable concrete that meets and exceeds the ASTM C309 Standard Specification.	34
Section	Polishable Concrete Toppings	
11	Self-leveling polished concrete toppings provide amazing aesthetics and unbeatable durability . Add a touch of elegance to any space and create a visually captivating environment with durable, low maintenance surface that leaves a lasting impression for years to come.	37
Section	Polyurea Joint Fillers & Repair	
12	Whether you are filling control joints, or fixing spalls and cracks, in concrete floors, SpecChem's Polyureas provide premium performance for commercial and industrial applications.	41
Section	Repair Mortars	
13	Our system of concrete repair and restoration products is formulated for professionals who are serious about the repair, stabilization, restoration and strengthening of concrete projects. Our full line of professional concrete repair and restoration products features cementitious concrete patching and repair mortars – for horizontal, vertical, and overhead needs, self-leveling underlayments, polishable overlays, epoxies, and more.	43
Section	Self-Leveling Underlayments	
14	Our premium underlayments provide smooth, level surfaces designed for interior applications. These self-leveling products do not require troweling and are suitable for installing various floor coverings like carpet, tile adhesives, and other finishes .	51
Section	Specialty Epoxies	
15	Our performance-driven line of epoxy bonding agents, crack injection and joint control products, specialty epoxy grouts, mortars, and sealers are all based on our desire to engineer formulas that exceed their respective standards and provide the highest quality results .	54
Section	Surface Retarders	
16	Upgrade driveways, patios, walkways, pool decks, or any horizontal surface where you want to reveal the true beauty of decorative aggregate in concrete with SpecChem's Surface Retarders. Our easy-to-use spray-applied products are specially engineered to remove the surface of freshly placed concrete, exposing a remarkable aggregate finish that is both durable and skid-resistant .	61
Section	Tilt-Up Bond Breakers	
17	SpecChem's industry-leading tilt-up bond breaker products are chemically reactive and specifically engineered to provide clean and easy lift of tilt-up panels . Our bond breakers are formulated to leave no residue, stain, or discoloration , and contain no diesel, kerosene, waxes, or silicones.	62
Section	Water Repellents	
18	Moisture is, without a doubt, one of concrete's worst enemies . For interior and exterior above grade concrete and masonry surfaces, protecting against moisture, salts, corrosion, spalling, and deterioration is a top priority . Our 100% reactive penetrating water repellents come in a variety of VOC compliant formulas to protect decks, pavements, parking structures, ramps, bridges, marine platforms, and more.	59
Section	Waterproofing & Damp Proofing	
19	Our Max-A-Guard line of VOC compliant products is specially formulated to patch, repair, and protect asphalt surfaces, and features our premium, DOT approved, 0 VOC asphalt cold patch. Additionally, our asphalt emulsion coatings are designed specifically for waterproofing, damp proofing and protecting surfaces on exterior below grade and between-slab applications.	61

Dear SpecChem Partners,

At SpecChem, we firmly believe that relationships are the foundation of our industry, and we view each of our customers as partners in the industry. Our team is committed to manufacturing the highest quality of concrete chemical products to serve your construction needs and, equally important, we're dedicated to providing you best-in-class customer service in the construction industry.

Our comprehensive range of concrete products allows you to move forward in confidence knowing your partnership provides you with:

- **Customization and Flexibility:** Choose from our wide range of products that match your specific needs, be it, environmental conditions, building materials, or performance specifications.
- **Cross-Market Solutions:** Our products are used on residential, commercial, industrial, DOT & infrastructure, and repair & restoration projects around the globe.
- **System Projects:** We manufacture products designed to work together giving you single source liability on projects.
- **Availability:** Products are produced and shipped from one of our state-of-the-art manufacturing facilities strategically located throughout the country.

Whether you are a distributor, contractor, engineer, or architect, we understand that your reputation hinges on the products you sell, use, and specify.

Thank you for choosing SpecChem and allowing us to be your solution to your concrete chemical needs. We are honored every day to provide construction products that build a better and more sustainable world.

Cheers,



Greg S. Maday,
Chairman & CEO

A handwritten signature in white ink, appearing to read "G. Maday", written in a cursive style.

WE'VE GOT CONCRETE COVERED!

Industrial

We manufacture an extensive line of products to help your concrete surfaces and floors last longer, improve general durability, and cost less to maintain.



Commercial

SpecChem's comprehensive product catalog, including bond breakers, protective sealers, and curing compounds, has everything you need to get the job done right the first time.



Infrastructure

For projects ranging from highways, airports, bridges, and more, SpecChem's curing compounds, asphalt patching, waterproofing, and repair products are DOT approved and VOC compliant.



Residential

From patios, driveways, walkways, to pool decks, SpecChem's line of products has what you need to give your residential concrete the look and finish you want.



Restoration

Our full line of concrete repair and restoration products features epoxies, polishable overlays, self-leveling underlayments, repair mortars, and more.



SPECHEM
Solution to Service

INDUSTRY INVOLVEMENT

At SpecChem, we take our commitment to being an industry leader very seriously. We serve five key concrete markets – commercial, industrial, residential, DOT & infrastructure, and repair & restoration. If there's an industry trade group or association involved with these key market segments – or the industry in general – there's a pretty good chance we're involved. Some of the organizations we participate in and support:





Cleaners/Strippers & Admixtures

Made to remove grease, grime, or other contaminants.



Berry Clean

Berry Clean is a cost effective, natural raspberry scented, cleaner/degreaser concentrate. Berry Clean will effectively remove grease, grime, many types of carpet/tile cutback adhesives, and other contaminants from architectural concrete and other surfaces. Berry Clean will also remove acrylic and resin concrete curing compounds from concrete surfaces. Complies with all national VOC regulations, including SCAQMD/OTC/CA/VA.

Available in 1, 5, or 55 gal units



C-Set

C-Set is an accelerating admixture for portland cement, masonry cement and stucco mortars. C-Set accelerates the hydration of cement resulting in shorter setting times and high early and overall strength.

Available in 1, 5, or 55 gal units



K-Set

K-Set is a non-corrosive, non-chloride accelerating admixture. K-Set accelerates the hydration of cement, resulting in shorter set times and high early strength. K-Set provides improved workability, helps prevent segregation, and is a substantial aid in early stiffening for mortar and stucco mixes. K-Set is an aqueous solution of organic and inorganic compounds that produces rapid heat development within the mortar, protecting it from freezing during its early life at low temperatures.

Available in 1, 5, or 55 gal units



Orange Peel

Orange Peel concentrate is a cost effective, natural citrus solvent, cleaner and degreaser. Orange Peel is an innovative solution for the toughest industrial applications. Orange Peel will effectively remove grease, grime, and other contaminants from architectural concrete.

Available in 1, 5, or 55 gal units



Sealer ReNew

Sealer ReNew is a specially blended high-strength solvent formulated to brighten and rejuvenate existing decorative acrylic sealers. Sealer ReNew can also be used to clean or strip deteriorated sealer and to release moisture blush (whitening) trapped beneath the sealer.

Available in 1, 5, or 55 gal units



Solvent 100

Solvent 100 is a clear, colorless, non-flammable, high-strength solvent formulated specifically as a thinner and clean up material for resin-based compounds.

Available in 1, 5, or 55 gal units



SpecBlast

SpecBlast is a chemically reactive liquid formulated to soften and remove concrete buildup from concrete tools and equipment. SpecBlast is designed to help avoid the damaging effects of sandblasting, bush hammering, and jackhammering hardened concrete from equipment.

Available in 1, 5, or 55 gal units



Xylene

Xylene is a clear, colorless, flammable, high-strength solvent formulated specifically as a thinner and clean up material for resin-based compounds. Xylene has a greater solvency strength (KB Value) than SpecChem Solvent 100 or mineral spirits.

Available in 1, 5, or 55 gal units

SAFE AND EFFECTIVE



Looking for a high-quality cleaner and degreaser that *meets the stringent VOC guidelines for SCAQMD/OTC/CA/VA?*

With a VOC content of less than 25 grams per liter, **Berry Clean** is perfect for removing adhesives and other tough contaminants from your concrete surfaces, while remaining safe and effective, even in the most regulated areas.



Curing Compounds and Cure & Sealers

Formulated to improve hydration, durability, and offer protection.



Crystal Rez

Crystal Rez is a clear, dissipating, resin water-based emulsion curing compound for use on freshly finished horizontal and vertical concrete surfaces. Crystal Rez is formulated to provide an effective curing membrane that will dry to a clear (non-yellowing) membrane. Crystal Rez will provide a more cost effective alternative to cure & seals without the unsightly yellow/amber appearance of other dissipating resins. May contribute to **LEED credits. ASTM C309 Type 1 and 1-D, Class A & B** compliant.

Available in 5 or 55 gal units



Cure & Seal 25

Cure & Seal 25 is a VOC compliant, non-yellowing, acrylic polymer engineered to cure, seal, harden, and dustproof freshly placed concrete and improve the wearability and durability of aged concrete surfaces. Cure & Seal 25 provides a tough glossy film that is resistant to abrasion and common staining materials, reduces clean-up costs, brightens floors, and improves concrete's resistance against de-icing salts. **ASTM C309, Type 1, classes A & B** and **ASTM C1315 Class A** compliant.

Available in 5 or 55 gal units



Cure & Seal 25 EX

Cure & Seal 25 EX is a VOC compliant, non-yellowing, acrylic polymer engineered to cure, seal, harden, and dustproof freshly placed concrete and improve the wearability and durability of aged concrete surfaces. Cure & Seal 25 EX is formulated with a unique solvent blend allowing fast-drying, solvent-based performance along with VOC compliance in the **OTC/LADCO/MRPO** regions. **ASTM C309, Type 1, Class A & B** and **ASTM C1315 Class A** compliant.

Available in 5 or 55 gal units



Cure & Seal 25 UV

Cure & Seal 25 UV is a VOC compliant, acrylic non-yellowing polymer engineered to cure, seal, harden, and dustproof freshly placed concrete and improve the wearability and durability of aged concrete surfaces. Cure & Seal 25 UV is formulated to provide maximum color stability in a high-gloss finish. Cure & Seal 25 UV is stable under ultra-violet light and is suitable for both exterior and interior use. **ASTM C309, Type 1, Class A & B** and **ASTM C1315 Class A, Type 1** compliant.

Available in 5 or 55 gal units



Cure & Seal 25 UV EX

Cure & Seal 25 UV EX is a VOC compliant, non-yellowing, acrylic polymer engineered to cure, seal, harden, and dustproof freshly placed concrete and improve the wearability and durability of aged concrete surfaces. Cure & Seal 25 UV EX is formulated with a unique solvent blend allowing fast-drying, solvent-base performance along with VOC compliance in the **OTC/LADCO/MRPO** regions. **ASTM C309, Type 1, Class A & B** and **ASTM C1315 Class A** compliant.

Available in 5 or 55 gal units



Cure & Seal 30

Cure & Seal 30 is a high-solids, VOC compliant, acrylic polymer engineered to cure, seal, harden, and dustproof freshly placed concrete and improve the wearability and durability of aged concrete surfaces. Cure & Seal 30 provides a tough, glossy film that is resistant to abrasion and common staining materials, reduces clean up costs, brightens floors, and improves concrete's resistance against de-icing salts. **ASTM C309, Type 1, Class A & B** and **ASTM C1315, Class A** compliant.

Available in 5 or 55 gal units

Industry Knowledge



WHAT IS ASTM C309?

Standard Specification for Liquid Membrane-Forming Compounds for Curing Concrete

ASTM C309 is the most common concrete curing specification in use today. It covers liquid membrane-forming compounds suitable for application to concrete surfaces to reduce the loss of water during the early-hardening period. According to ASTM.org, ASTM C309 states that the curing compound must form a membrane that has moisture retention properties equaling 0.55 Kg/M2 in 72 hours when applied at 200 square feet per gallon.

The physical appearance is described by three types, and the solids characterized by two classes:

Type 1 - clear or translucent, without dye.

Type 1-D – clear or translucent, with fugitive dye.

Type 2 – white pigmented.

Class A – no restriction on vehicle solids in the curing compound.

Class B – vehicle solids restricted to all resin material.

Exclusion: Sodium Silicate based curing compounds are excluded.

Drying time: The liquid membrane-forming compound shall be dry to the touch in not more than 4 hours.



Cure & Seal 30 EX

Cure & Seal 30 EX is a high-solids, VOC compliant, acrylic polymer engineered to cure, seal, harden, and dustproof freshly placed concrete and improve the wearability and durability of aged concrete surfaces. Cure & Seal 30 EX is formulated with a unique solvent blend allowing fast-drying, solvent-based performance along with VOC compliance in the **OTC/LADCO/MRPO** regions. **ASTM C309, Type 1, Class A & B** and **ASTM C1315, Class A** compliant.

Available in 5 or 55 gal units



Cure & Seal WB

Cure & Seal WB is a water-based, non-yellowing, VOC compliant acrylic polymer engineered to cure, seal, harden, and dustproof freshly placed concrete and improve the wearability and durability of aged concrete surfaces. May contribute to **LEED credits**. **ASTM C309, Type 1, Class A & B** and **ASTM C1315** compliant.

Available in 5 or 55 gal units



Cure & Seal WB 25

Cure & Seal WB 25 is a high-solids, water-based, non-yellowing, VOC compliant, acrylic polymer engineered to cure, seal, harden, and dustproof freshly placed concrete and improve the wearability and durability of aged concrete surfaces. Cure & Seal WB 25 provides a tough, glossy film that is resistant to abrasion and common staining material, prevents the adhesion of cementitious droppings, and brightens floors. **ASTM C309, Type 1, Class A & B** and **ASTM C1315 Type 1, Class A** compliant.

Available in 5 or 55 gal units



Cure & Seal WB 30

Cure & Seal WB 30 is a high-solids water-based, VOC compliant acrylic polymer engineered to cure, seal, harden, and dustproof freshly placed concrete and improve the wearability and durability of aged concrete surfaces. Cure & Seal WB 30 provides a tough glossy film that is resistant to abrasion and common staining material, prevents the adhesion of cementitious droppings, and brightens floors. **ASTM C309, Type 1, Class A & B** and **ASTM C1315 Type 1, Class A** compliant.

Available in 5 or 55 gal units



Cure Shield

Cure Shield is a unique solvent-based blend of silane and pure, non-yellowing, acrylic copolymers designed to cure, seal, harden, and dustproof fresh concrete and provide additional protection to existing concrete. In addition to forming an effective film-forming curing and sealing compound, it also contains silane. Silane penetrates the fresh concrete and provides protection against spalling and deterioration of concrete structures caused by de-icing salts. **ASTM C309, Type 1, Class B** and **ASTM C1315 Type 1, Class A & B** compliant.

Available in 5 or 55 gal units



Cure Shield WB

Cure Shield WB is a unique water-based blend of silane and pure non-yellowing acrylic copolymers designed to cure, seal, harden and dustproof fresh concrete and provide additional protection to existing concrete. In addition to forming an effective film-forming curing and sealing compound, it also contains silane. Silane penetrates the fresh concrete and provides protection against spalling and deterioration of concrete structures caused by de-icing salts. **ASTM C309, Type 1, Class B** and **ASTM C1315 Type 1, Class A & B** compliant.

Available in 5 or 55 gal units



Cure Shield EX

Cure Shield EX is a unique solvent-based blend of silane and pure, non-yellowing, acrylic copolymers designed to cure, seal, harden, and dustproof fresh concrete and provide additional protection to existing concrete. In addition to creating an effective film-forming curing and sealing compound, it also contains silane. Silane penetrates the fresh concrete and provides protection against spalling and deterioration of concrete structures caused by de-icing salts. **ASTM C309, Type 1, Class B** and **ASTM C1315 Type 1, Class A & B** compliant.

Available in 5 or 55 gal units



E-Cure®

E-Cure® is a clear concrete curing compound developed using innovative technology to cure concrete as well as resolve compatibility issues related to flooring adhesives. E-Cure® is a spray-applied concrete cure, hardener, and dustproof. E-Cure® penetrates and forms a temporary membrane to cure, densify, harden, and dustproof concrete, and is essential for maximum strength development. Meets the moisture retention requirements of **ASTM C309 Type 1 and 1-D, Class A & B** on hard-troweled concrete surfaces. May contribute to **LEED credits**.

Available in 5 or 55 gal units

Industry Knowledge

WHAT IS ASTM C1315?

ASTM C1315 replaces TTC-0800 as the curing and sealing specification for the industry.

This specification covers the performance requirements for membrane-forming liquids suitable for use as curing compounds and sealers for fresh and hardened concrete. Each membrane should have good alkali resistance, acid resistance, adhesion-promoting qualities, and resistance to degradation by UV light. The materials are limited to clear or translucent and white pigmented materials, all of which are classified into non-yellowing, moderately yellowing, or yellows or darkens unrestrictedly.

Type 1 - clear or translucent.

Type 2 - white pigmented.

Class A - non-yellowing, Gardner Color Standard No. 1

Class B - Moderate yellowing, Gardner Color Standard No. 3

Class C - Severe darkening and yellowing.

Minimum Solids Content: Type 1 and 2 are both a minimum of 25%



SC Cure 500

SC Cure 500 is a technologically advanced concrete curing compound formulated to cure hard-troweled concrete that is expected to be treated with a lithium silicate hardener/densifier, such as LithSeal SC. SC Cure 500 penetrates and forms a temporary membrane to cure, densify, harden and dustproof concrete, and is essential for maximum strength development. Meets the moisture retention requirements of **ASTM C309 Type 1 and 1-D, Class A & B** on hard-troweled concrete surfaces. May contribute to **LEED credits**.

Available in 5 or 55 gal units



SpecRez

SpecRez is a water-based dissipating resin-based emulsion curing compound for use on freshly finished horizontal and vertical concrete surfaces. SpecRez is formulated to provide an effective curing membrane that will begin to dissipate after exposure to sunlight, weathering and/or traffic. May contribute to **LEED credits. ASTM C309 Type 1 and 1-D, Class A & B** compliant.

Available in 5 or 55 gal units



PROJECT HIGHLIGHT



American Royal HQ | Kansas City, KS

SpecStrip, SC Multi-Purpose Grout, Cure & Seal WB, and SpecFilm

The American Royal Headquarters in Kansas City, KS, poised to be a landmark 390-thousand-square-foot facility for the American Royal BBQ, embodies the essence of collaboration and technical precision, facilitated by SpecChem's product suite. Through the strategic application of SpecStrip for formwork, SC Multi-Purpose Grout for structural integrity, Cure Seal WB for sealing, and SpecFilm as an evaporation retardant, the project successfully navigated the complexities of large-scale construction.

This endeavor not only highlights SpecChem's dedication to delivering high-quality construction solutions but also their role in bringing to life a project that will stand as a testament to innovative construction and community spirit.

WELCOME TO THE GOLD STANDARD

The Highest Quality Premium Concrete Chemicals



The Industry's Gold Standard for *quality and innovation* in concrete curing compounds.

E-Cure® is the most technologically innovative product in the *last 30 years* of concrete curing compounds. *Nothing* on the market cures, hardens, dustproofs, and deals with floor adhesive problems like SpecChem's E-Cure®.

0 VOCs | ASTM C309 Type 1D Class A&B compliant | USDA Accepted | NSF/ANSI 61 Certified

www.specchem.com | 816.968.5600

Decorative & Protective Sealers

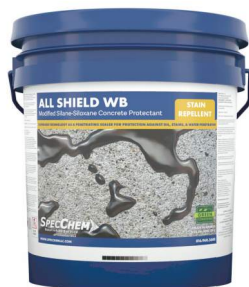
Specially formulated to meet a variety of applications and needs.



All Shield EX

All Shield EX is an exempt solvent, low VOC, synthetic modified, silane-siloxane concrete protectant. This clear, penetrating, breathable protectant is designed for use on interior/exterior, horizontal/vertical concrete, natural or synthetic stone surfaces to resist oil, water, food stains, and many other liquid contaminants.

Available in 1, 5 or 55 gal units



All Shield WB

All Shield WB is a low VOC, waterborne, synthetic modified, silane-siloxane concrete protectant. This clear, penetrating, breathable protectant is designed for use on interior and exterior concrete, natural or synthetic stone surfaces to resist water, oil, food stains, and many other liquid contaminants. All Shield WB penetrates the surface and bonds directly with the substrate, which results in a surface that is highly-resistant to moisture, staining and de-icing salts. VOC compliant in the **OTC/LADCO/MRPO** regions.

Available in 1, 5 or 55 gal units



Aqua Shine

Aqua Shine is a water-based, methacrylate cure and sealer developed for interior and exterior applications, such as exposed aggregate, natural stone, brick, quarry tile, terrazzo, and other concrete surfaces. This non-yellowing, low odor, durable sealer enhances the appearance of all treated surfaces with a wet look, satin sheen. Aqua Shine protects sealed surfaces from the damaging effects of de-icing salts, and acts as a binder to minimize aggregate pop-out.

Available in 1, 5, or 55 gal units



Crystal Shine

(Available in High Solids)

Crystal Shine is a lacquer sealer developed for interior and exterior applications to bring out the radiance and luster of exposed aggregate and other decorative concrete surfaces with a durable protective finish. Crystal Shine is ideal for stained concrete, exposed aggregate slabs, walkways, swimming pool decks, and walls. Crystal Shine is formulated with a unique solvent blend allowing fast-drying, solvent-based performance along with VOC compliance in the **OTC/LADCO/MRPO/SCAQMD** regions.

Available in 1, 5, or 55 gal units



Crystal Shine Matte

Crystal Shine Matte is a lacquer sealer developed for interior and exterior applications to bring out the radiance and luster of exposed aggregate and other decorative concrete surfaces with a durable protective coating that produces a subtle, satin "matte" finish. Crystal Shine Matte is ideal for stained concrete, exposed aggregate slabs, walkways, swimming pool decks and walls. Crystal Shine Matte is formulated with a unique solvent blend allowing fast-drying, solvent-based performance along with VOC compliance in the **OTC/LADCO/MRPO/SCAQMD** regions.

Available in 1, 5, or 55 gal units



Deco Shine

Deco Shine is a methacrylate cure and sealer developed specifically for exterior applications, including exposed aggregate and other decorative concrete surfaces. Deco Shine provides a clear, protective coating that brings out the radiance and luster of all natural aggregate and preserves a long lasting, durable finish.

Available in 1, 5, or 55 gal units



Deco Shine Matte

Deco Shine Matte is a methacrylate cure and sealer developed specifically for exterior applications, including exposed aggregate and other decorative concrete surfaces. Deco Shine Matte provides a clear, protective coating that produces a subtle, satin "matte" finish that highlights the color and texture of surfaces without excessive shine. Deco Shine Matte is ideal for stained concrete, exposed aggregate slabs, walkways, swimming pool decks, and walls.

Available in 1, 5, or 55 gal units



Surface Grip

Surface Grip is a finely ground, slip-resistant polymer additive designed specifically to improve the slip resistance of film forming sealers. Surface Grip can be added to all SpecChem and most other manufacturer's water and solvent-based film-forming sealers. It is ideal for use on surfaces where water or moisture can accumulate, such as pool decks, garage floors, driveways, patios, walkways, and other smooth surfaces.

3.2 oz. or 15 oz. bottles

ENGINEERED TO PROTECT

The Highest Quality Concrete Chemicals

SPEC[®]CHEM
Solution to Service



SpecChem's line of decorative and water-based sealers is specially engineered to protect your new and existing concrete, masonry surfaces, decks, pavements, and more.

Emphasizing radiance and luster of exposed aggregate and other decorative concrete surfaces with a durable protective finish.



Surface Shine

Surface Shine is a transparent, high-gloss, non-yellowing acrylic polymer engineered as a cure and seal specifically for exterior surfaces such as exposed aggregate, natural stone, brick, quarry tile, terrazzo, and other concrete surfaces. It is also suitable for interior applications. This non-yellowing, durable sealer enhances the appearance of all treated surfaces with a high-gloss sheen.

Available in 5 or 55 gal units



Surface Shine Brown

Surface Shine Brown is a VOC compliant acrylic polymer engineered to cure, seal, harden, and dustproof freshly placed concrete and improve the wearability and durability of aged concrete surfaces. Surface Shine Brown is a light brown pigmented acrylic sealer that dries to a medium to light brown finish and enhances and tints the cement paste of Merrimack Brown exposed aggregate surfaces.

Available in 5 or 55 gal units



Surface Shine Brown EX

Surface Shine Brown EX is a VOC compliant brown pigmented acrylic polymer engineered to cure, seal, harden, and dustproof freshly placed concrete and improve the wearability and durability of aged concrete surfaces. Surface Shine Brown EX is a light brown pigmented sealer that enhances and tints the cement paste of Merrimack Brown exposed aggregate surfaces.

Available in 5 gal units



Surface Shine Gray

Surface Shine Gray is a VOC compliant acrylic polymer engineered to cure, seal, harden, and dustproof freshly placed concrete and improve the wearability and durability of aged concrete surfaces. Surface Shine Gray is a light gray pigmented acrylic sealer that dries to a medium to light gray finish.

Available in 5 or 55 gal units



Surface Shine Gray EX

Surface Shine Gray EX is a VOC compliant gray pigmented acrylic polymer engineered to cure, seal, harden, and dustproof freshly placed concrete and improve the wearability and durability of aged concrete surfaces. Surface Shine Gray EX is formulated with a unique solvent blend allowing fast-drying, solvent-based performance along with VOC compliance in the **OTC/LADCO/MRPO** regions.

Available in 5 gal units



Surface Shine EX

Surface Shine EX is a VOC compliant, high-gloss, non-yellowing acrylic polymer engineered as a cure and seal specifically for exterior surfaces such as exposed aggregate, natural stone, brick, quarry tile, terrazzo, and other concrete surfaces. Surface Shine EX is formulated with a unique solvent blend allowing fast-drying, solvent-based performance along with VOC compliance in the **OTC/LADCO/MRPO** regions.

Available in 5 or 55 gal units



Surface Shine WB

Surface Shine WB is a high-solids, water-based, non-yellowing acrylic polymer engineered as a sealer specifically for exterior surfaces such as exposed aggregate, natural stone, brick, quarry tile, terrazzo, and other concrete surfaces. It is also suitable for interior applications. This non-yellowing, low odor, durable sealer enhances the appearance of all treated surfaces with a high-gloss sheen.

Available in 5 or 55 gal units

ABOUT SPECHEM

SpecChem R&D

With a state-of-the-art laboratory based in one of our Kansas City plants and quality control labs in every plant around the country, our research and development and quality control teams are on top of everything, from ensuring every batch of product we ship meets industry standards to exploring new and exciting products to meet your demands.

Our investment in research and development is one of our key differentiators in establishing SpecChem as a best-in-class manufacturer. On-going updates to our laboratory and quality control facilities, combined with some of the most knowledgeable and experienced minds in the industry, help ensure that we are doing more than just serving our customers – we're fostering innovation in the industry.

Dry Shake Hardeners & Toppings

Designed to increased wear resistance on heavy traffic floors.



Quartz Floor Hardener

Quartz Floor Hardener is a mixture of finely graded non-metallic quartz aggregates, plasticizer, and cement binder. It is an economical concrete floor hardener recommended for both interior and exterior use. When applied at the proper point in the concrete setting cycle, Quartz Floor Hardener is worked into the concrete to become an integral part of the floor to provide a surface which is highly resistant to abrasion. **ACI 302, ACI 305, ACI 306** compliant. Available in the following colors; Light Reflective, Tile Red, Nile Green, French Gray, Battleship Gray.

Available in 50 lb. bags



SpecPlate Floor Topping

SpecPlate Floor Topping is an industrial metallic aggregate floor topping which provides heavy duty abrasion and impact resistance to existing or new concrete floors. SpecPlate Floor Topping combines clean, graded, iron aggregate with special cements and admixtures to increase abrasion resistance up to 8 times more than 4000 psi concrete.

Available in 50 lb. bags as well as 3,000 lb. super sacks



SpecPlate Hardener

SpecPlate Hardener is a well graded blend of metallic aggregates, plasticizer and cement binder. It provides maximum abrasion-resistance to interior concrete floors. When incorporated into fresh concrete slabs, SpecPlate Hardener will provide a surface which is highly resistant to abrasion, impact and point loading even in areas subject to frequent moisture and water exposure. SpecPlate Hardener, mixed as a mortar, is also used to construct iron armored joints. SpecPlate Hardener is available in a natural concrete color.

Available in 50 lb. bags



SpecPlate NOX

SpecPlate NOX is a well graded blend of nonoxidizing metallic aggregates, plasticizer and cement binder. It provides maximum abrasion-resistance to interior concrete floors. When incorporated into fresh concrete slabs, SpecPlate NOX will provide a surface which is highly resistant to abrasion, impact and point loading even in areas subject to frequent moisture and water exposure. SpecPlate NOX, mixed as a mortar, is also used to construct iron armored joints. SpecPlate NOX is available in a natural Concrete Gray and a Light Reflective color.

Available in 50 lb. bags



PROJECT HIGHLIGHT

COTEAU MINING FACILITY

Freedom Mine | Beulah, ND

SpecPlate Hardener NOX, SpecFilm, IntraFilm, and E-Cure®.

In this project, our products proved instrumental in maintaining the structural integrity of the largest lignite mine in the United States - Coteau Mining Facility's Freedom Mine in Beulah, North Dakota. The contractor used SpecPlate Hardener NOX, SpecFilm, IntraFilm, and E-Cure®.

The Freedom Mine, a critical lignite coal mine that provides different blends of coal to three different customers, needed an advanced solution to handle the wear and tear caused by steel wheel dozers. Our SpecPlate Hardener NOX, known for its superior impact resistance, was used over standard mineral-based dry shake hardeners or cementitious concrete to reinforce the concrete surface.

During placement, SpecFilm was applied to ensure superior quality. IntraFilm was utilized as a finishing aid when the contractor was integrating SpecPlate Hardener NOX into the concrete surface, ensuring a smooth, durable finish. Finally, E-Cure® was used for effective curing, sealing in the quality and strength of the concrete.

This project highlights SpecChem's dedication to providing high-quality, industry-leading concrete construction materials that can meet the diverse needs of various industrial applications.



Evaporation Retarders

Designed to reduce moisture loss and prevent shrinkage and cracking.



IntraFilm

IntraFilm is a reactive colloidal silica densifier and finishing aid that lubricates freshly placed concrete for faster and easier finishing and prolonged workability in adverse conditions, such as high temperatures, high wind or low humidity.

Available in 1, 5, or 55 gal units



IntraFilm Concentrate

IntraFilm Concentrate when diluted 4 to 1 (water to concentrate) is a reactive colloidal silica densifier and finishing aid that lubricates freshly placed concrete for faster and easier finishing and prolonged workability in adverse conditions, such as high temperatures, high wind or low humidity.

Available in 1, 5, or 55 gal units



SpecFilm

SpecFilm is designed to be used as an evaporation retardant and finishing aid on concrete flatwork of all types. When sprayed over fresh concrete, SpecFilm forms a thin, continuous film which prevents rapid moisture loss from the concrete surface. SpecFilm is especially effective when concreting operations must be performed in direct sun, wind, high temperatures, or low relative humidity.

Available in 1, 5, or 55 gal units



SpecFilm Concentrate

SpecFilm Concentrate is an economical concentrate that can be diluted with potable water up to a 9-to-1 ratio, providing a very effective evaporation retardant and finishing aid for concrete flatwork. Once diluted and sprayed over fresh concrete, SpecFilm forms a thin, continuous film which prevents rapid moisture loss from the concrete surface.

Available in 1, 5, or 55 gal units



INTRAFILM

ADVANCED COLLOIDAL SILICA CONCRETE FINISHING AID

Faster Finishing, Improved Surface Strength, Prolonged Workability.

Facilitates easier and faster finishing while improving the concrete's durability, and compressive strength, and reduces permeability.





Form Release Agents

Products that improve the release of your formwork.



Bio Strip WB

Bio Strip WB is a 100% natural, biodegradable, petroleum-free, chemically reactive release agent, ideal for sensitive environmental situations such as bridge formwork over rivers and streams or potable water reservoirs. Bio Strip WB provides quick, easy release and leaves an architectural bondable concrete surface.

Available in 5, 55, and 275 gal units



Bio Strip WB Concentrate

Bio Strip WB Concentrate is a 100% biodegradable, chemical release agent emulsion concentrate that, when properly diluted with water, (4-to-1) provides a positive release ideal for sensitive environmental situations such as bridge formwork over rivers and streams or potable water reservoirs. Bio Strip WB Concentrate provides quick, easy release on wood, steel, aluminum, and elastomeric liners and leaves an architectural bondable concrete surface.

Available in 5, 55, and 275 gal units



Deco Liquid Release

Deco Liquid Release is a colorless liquid release formulated and recommended for use with decorative, elastomeric concrete texturing mats. It forms a lubricating barrier that prolongs the life of the imprinting tools by decreasing the friction between the mats and the concrete.

Available in 5, 55, and 275 gal units



Dry-Deck WB

Dry-Deck WB dries to form a durable, clear, waxy film which chemically reacts with the concrete to produce a smooth, architectural concrete finish. Dry-Deck WB provides quick, easy release and leaves an architectural bondable concrete surface.

Available in 5, 55, and 275 gal units



EZ Clean & Release

A ready-to-use highly-reactive mixture that, when properly applied to concrete forms with concrete buildup, will soften the hardened concrete and “self-clean” as the forms are stripped.

Available in 5, 55, and 275 gal units



Form Seasoning WB

Form Seasoning WB is a water-based treatment for new aluminum forms. It oxidizes the elemental aluminum on the surface of new aluminum forms to properly season and prepare them for use. Once seasoned, use a quality reactive form release agent like SpecStrip to produce a clean release.

Available in 5, 55, and 275 gal units



Precast 80

Precast 80 is a chemically reactive, fast-drying mineral oil based, concrete release agent specially engineered to positively prevent bonding of the concrete to forms in precast and shop use applications. Precast 80 prevents rust and leaves no residue. Contains no diesel, waxes or silicones.

Available in 5, 55, and 275 gal units



SpecStrip

(Available in Ultra Low VOC)

SpecStrip is a chemically reactive mineral oil based concrete release agent specially engineered to positively prevent bonding of the concrete to forms and form liners, and contains no waxes or silicones. SpecStrip is made to improve the release of formwork, reduce concrete buildup on formwork and liners, reduce cleaning of formwork, prevent rust on forms, and reduce stains or discoloration.

Available in 5, 55, and 275 gal units

SIMPLE STEPS TO THE ALUMINIUM FORMING SYSTEM

1 Season

Form Seasoning WB

Form Seasoning WB is a water-based treatment for new aluminum forms. It oxidizes the elemental aluminum on the surface of new aluminum forms to properly season and prepare them for use.



2 Prevent

SpecStrip

SpecStrip is a chemically reactive release agent specially engineered to positively prevent bonding of the concrete to forms and form liners.



3 Release

TriAct

TriAct is a concentrated, highly-reactive petroleum mixture that, when properly diluted, can be used as a reactive form release agent, an aluminum form "seasoning" agent, and a softener and maintenance coating.



4 Remove

SpecBlast

A chemically reactive liquid formulated to soften and remove concrete buildup from concrete tools and equipment. SpecBlast is designed to help avoid the damaging effects of sandblasting, bushhammering and jackhammering hardened concrete from equipment.



SAFE AND EFFECTIVE



Looking for a low VOC form release agent that contributes to LEED credits?

Our green-conscious **Bio Strip WB** is our 100% natural, organic, chemically reactive release agent, and is ideal for sensitive environmental situations such as bridge formwork over rivers and streams or potable water reservoirs. **Bio Strip WB** provides a quick and easy release, leaving an architectural bondable surface with no residue. And with a VOC content of less than 20 grams per liter, **Bio Strip WB** meets the stringent emissions requirements for OTC and SCAQMD.



SpecStrip Plus

SpecStrip Plus is a premium chemically reactive mineral oil based, concrete release agent designed to positively prevent bonding of the concrete to wood, steel, and aluminum forms. SpecStrip Plus contains no diesel, kerosene, waxes, or silicones. SpecStrip Plus offers superior performance, improving release of formwork, reducing concrete buildup on formwork, and prevents rust on forms. Leaves no residue or stains.

Available in 5, 55, and 275 gal units



SpecStrip Supreme

SpecStrip Supreme is a highly refined chemically reactive mineral oil based, concrete release agent specially engineered to positively prevent bonding of the concrete to forms and form liners, protect forms from rust, reduce concrete buildup on formwork and liners, and leave no residue or stains. SpecStrip Supreme contains no diesel, kerosene, waxes or silicones.

Available in 5, 55, and 275 gal units



SpecStrip 100 VOC

SpecStrip VOC 100 is a highly refined, chemically reactive mineral oil based, concrete release agent specially engineered to positively prevent bonding of the concrete to forms and form liners while complying with the most stringent VOC regulations, including SCAQMD. When properly applied, SpecStrip VOC 100 will not leave any residue or stain on the concrete, producing a smooth, architectural concrete surface ready for subsequent coatings. **SCAQMD** compliant.

Available in 5, 55, and 275 gal units



SpecStrip WB

SpecStrip WB is a reactive water-based, emulsified mineral oil release agent for all types of concrete forms. Forms treated with SpecStrip WB release easily, minimizing the number of bug holes. SpecStrip WB will not damage styrene bead or form liners, and leaves a coating on steel forms that inhibits rust. May contribute to **LEED credits**.

Available in 5, 55, and 275 gal units



TriAct

TriAct is a concentrated, highly reactive mineral oil based, concrete mixture that, when properly diluted, can be used as a reactive form release agent, an aluminum form "seasoning" agent, or a concrete softener and maintenance coating. This versatility reduces the need to inventory multiple products.

Available in 5, 55, and 275 gal units

Grouts & Anchoring Cement

Providing strength and durability in a variety of specialty applications.



SC Metallic Grout

SC Metallic Grout is a non-shrink metallic cement-based grout designed for industrial applications subjected to dynamic and repetitive loading. SC Metallic Grout does not contain chloride and is formulated for a wide variety of grouting applications, from drypack to fluid. **ASTM C1107, Grade A, B & C** and **CRD C-621 Grade A, B & C** compliant.

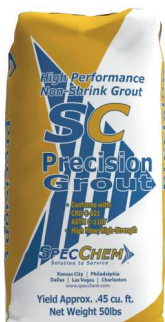
Available in 50 lb. bags



SC Multi-Purpose Grout

SC Multi-Purpose Grout is a non-shrink, non-metallic multi-purpose cement-based grout. SC Multi-Purpose Grout is formulated for a wide variety of grouting applications, from damp pack to flowable through a controlled, positive expansion. **ASTM C1107, Grade A, B & C** and **CRD C-621 Grade A, B & C** compliant.

Available in 50 lb. bags



SC Precision Grout

SC Precision Grout is a non-shrink, non-metallic, high-flow, cement-based grout. SC Precision Grout is formulated for a wide variety of grouting applications, from plastic to fluid through a controlled, positive expansion. Designed to provide effective load bearing for high-flow precision grouting applications. **ASTM C1107, Grade A, B & C** and **CRD C-621 Grade A, B & C** compliant.

Available in 50 lb. bags



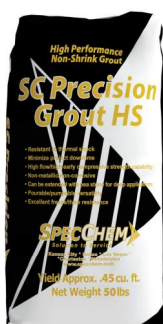
Panama Canal

SC Multi-Purpose Grout, SpecPoxy 3000

The \$5.25 Billion Panama Canal expansion project doubled the capacity of the canal, increasing both the number of ships and the size of ships that could pass through. Our non-shrink, non-metallic, DOT approved SC Multi-Purpose Grout and our ASTM 881 compliant, hi-mod, SpecPoxy 3000 were submitted and approved for this project. SpecPoxy 3000 was used to bond steel plates to concrete structures, while our SC Multi-Purpose Grout was used to grout lighting standards.



PROJECT HIGHLIGHT



SC Precision Grout HS

A non-shrink, non-metallic, cementitious grout that provides high early and ultimate compressive strength, over 16,000 psi, throughout a variety of applications. The unique formula, when mixed with water, creates a grout that is flowable and pumpable. Designed to provide effective load bearing for high-strength precision grouting applications such as compressors, heavy equipment foundations and tank bases. **ASTM C1107, Grade A, B & C** and **CRD C-621 Grade A, B & C** compliant.

Available in 50 lb. bags



UW Grout

UW Grout is a pumpable, underwater cement-based non-shrink grout for use on underwater repairs such as pile restoration. UW Grout is designed for underwater use in tidal zones, in applications requiring a non-shrink, non-metallic, wash-out resistant grout in thicknesses from 1/2" up to several inches. UW Grout is specially formulated for minimal wash-out and is salt-water resistant. **CRD C-621** compliant.

Available in 50 lb. bags

Industry Knowledge



WHAT IS ASTM C1107?

This specification covers packaged dry, hydraulic cement grout (non-shrink) intended for use under applied load where a change in height below initial placement height is to be avoided. Grouts covered are composed of hydraulic cement, fine aggregate, and other ingredients. They require only the addition of mixing water for use.

SUPER POR-ROK® & POR-ROK®

LEADING THE INDUSTRY

Anchoring cements with almost unlimited field applications



- Ideal for patching floors & walls
- Patches cracks in concrete structures
- Great for caulking foundations/wall voids
- No rodding, chaining or vibrating

Specchem.com

SPECHEM
Solution to Service

816.968.5600



Por-Rok®

Por-Rok® Anchoring Cement is used in the anchoring of heavy machinery, railings, guard rails, banisters, repairing of cracks on damaged concrete substrate. It is a non-shrink, hydraulic, controlled expansion cement in a ready to use preparation. Water is added at the job site to provide a pourable, durable anchoring or patching compound. Por-Rok® Anchoring Cement has almost unlimited field applications.

Available in 50 lb. bags and 5 lb. pails



Super Por-Rok®

Super Por-Rok® Anchoring Cement is used in the anchoring of heavy machinery, railings, guard rails, banisters, and in the repair of cracks on damaged concrete substrate. It is a non-shrink, hydraulic, controlled expansion cement in a ready to use preparation. Water is added at the job site to provide a pourable, durable anchoring or patching compound. Super Por-Rok® Anchoring Cement has almost unlimited field applications.

Available in 50 lb. bags and 5 lb. pails



Latex Bonding Agents

Providing superior adhesion and increased durability.



PlasterBond

PlasterBond is a rewettable PVA latex bonding agent designed especially for interior/ exterior bonding of fresh plaster in patching, plastering and topping applications. Recommended for interior and/or exterior use not subjected to constant moisture, hydrostatic pressure or continuous water saturation.

Available in 1, 5, or 55 gal units



SpecPrime

SpecPrime is a ready-to-use, rewettable, tinted primer which bonds new concrete and SpecChem underlayments to horizontal concrete or other sound surfaces. Recommended for interior and dry applications only. *Specifically designed as a primer for SpecFlow.*

Available in 1, 5, or 55 gal units



SpecWeld

SpecWeld is a ready-to-use, rewettable polyvinyl acetate (PVA) emulsion admixture and bonding agent which bonds new concrete, underlayments, masonry, stucco, terrazzo, and Portland cement/sand mixes to horizontal and vertical concrete surfaces. Recommended for interior and/or exterior use not subjected to constant moisture, hydrostatic pressure or continuous water saturation. **ASTM C932 and ASTM C1059, Type 1** compliant.

Available in 1, 5, or 55 gal units



StuccoBond

StuccoBond is a non-rewettable copolymer latex bonding agent designed especially for bonding of fresh concrete, stucco, mortar, or plaster in patching, plastering and topping applications.

Available in 1, 5, or 55 gal units



Strong Bond

Strong Bond is an acrylic admixture and bonding agent designed to improve the adhesion and durability of concrete, masonry, stucco, terrazzo, and Portland cement/ sand mixes to horizontal and vertical concrete and other surfaces. May contribute to **LEED credits. ASTM C1042, Type 2, and ASTM C1059, Type 2** compliant.

Available in 1, 5, or 55 gal units



Liquid Hardeners

Products for densifying, hardening and protecting your concrete surfaces.



Cure Hard

Cure Hard is a spray-applied concrete cure, hardener, and dustproof. Cure Hard deeply penetrates concrete surfaces to densify, seal, harden, and dustproof concrete and Portland cement-based material surfaces to help them achieve maximum abrasion resistance without altering the natural appearance of the concrete.

Available in 5 or 55 gal units



LithSeal Lite

LithSeal Lite is an economical lithium silicate sealer/densifier for concrete surfaces. LithSeal Lite deeply penetrates and reacts with cured concrete. This reaction produces a calcium silicate hydrate within the concrete pores. Treated surfaces will remain breathable, reduce porosity, reduce dusting, reduce water permeability, and increase abrasion resistance. When properly applied, LithSeal Lite will not leave the whitish blush characteristic of other sodium silicate products.

Available in 5 or 55 gal units



LithSeal SC

LithSeal SC is a premium lithium silicate sealer/densifier for concrete surfaces. LithSeal SC deeply penetrates and reacts with cured concrete. This reaction produces a calcium silicate hydrate within the concrete pores. Treated surfaces will remain breathable, reduce porosity, reduce dusting, reduce water permeability, and increase abrasion resistance. When properly applied, LithSeal SC will not leave the whitish blush characteristic of other sodium silicate products.

Available in 5 or 55 gal units



SpecGuard

SpecGuard is a multi-component, water-based polymeric protectant that improves the appearance and durability of concrete floors. SpecGuard incorporates a cross-linking nano-technology which aids penetration and adhesion, creating a tough, stain-resistant coating. SpecGuard also contains UV absorbers that enable it to protect colored or dyed concrete against UV degradation.

Available in 1, 5, or 55 gal units



Spec-O-Lith

Spec-O-Lith is a water-based solution of fluorosilicate, formulated to harden and dustproof concrete floors and improve the wearing characteristics of new or aged concrete and terrazzo. It provides a chemically hardened surface with increased resistance to water, chemicals (acids, alkalis, etc.), grease, and oil absorption. Spec-O-Lith is especially effective in strengthening weak, soft, or dusting concrete surfaces.

Available in 5 or 55 gal units



SpecHard-Intraseal

SpecHard-Intraseal is a proprietary, colorless siliconate solution that increases the wear surface strength of concrete floors subjected to pedestrian and vehicle traffic. SpecHard-Intraseal penetrates concrete surfaces to seal, densify, and harden. SpecHard-Intraseal floors last longer, cost less to maintain, are safe to use, and are guaranteed to resist dusting for years after application.

Available in 5 or 55 gal units



PROJECT HIGHLIGHT

KC Current Stadium | Kansas City, MO

E-Cure®, SpecStrip, SC Multi-Purpose Grout, SpecFilm, and Cure & Seal WB

SpecChem is proud to have contributed essential construction chemicals to the pioneering CPKC Stadium, a \$117-million facility dedicated to the National Women's Soccer League (NWSL) team, Kansas City Current. Announced in 2021, this project at Berkley Riverfront Park marks a significant investment in women's sports. SpecChem products like E-Cure®, SpecStrip, SC Multi-Purpose Grout, SpecFilm, and Cure & Seal WB played vital roles in ensuring durability and quality throughout the construction process. Our involvement underlines our commitment to supporting landmark projects that enhance community and sports development.

Liquid Hardeners

The Importance of Proper Concrete Curing in Residential Concrete Construction



Keith Fleming,
Eastern Regional Sales Manager,
Concrete Industry Expert

When it comes to residential concrete, proper curing is a crucial step in ensuring its strength, durability, and overall quality. Neglecting this step can result in a range of negative outcomes that can harm both the homeowner and the concrete contractor.

Hazards of not Curing Concrete

One of the main consequences of not curing concrete is that it can lead to surface cracks and crazing. Concrete is made up of water and cement, which react and harden over time. Proper curing helps to retain the moisture within the concrete and slow down the hardening process, giving it time to settle and strengthen. Without curing, the surface will dry too quickly, causing the surface to shrink and crack.

In addition to surface cracks, not curing concrete can also lead to poor abrasion resistance and staining. Curing helps to produce a dense and well-sealed surface, which is more resistant to wear and tear. Without curing, the surface will be porous and susceptible to staining, making it difficult to maintain the appearance of the concrete.

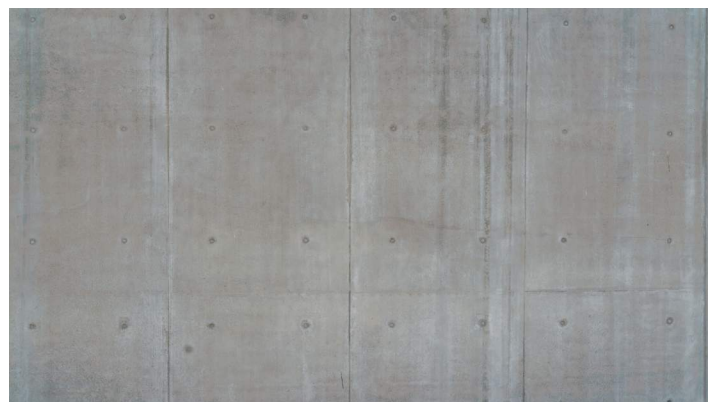
Another major issue with not curing concrete is reduced strength and durability. Curing helps to develop the concrete's full strength and durability, which is critical for its longevity. Without curing, the abrasion resistance of the concrete surface may be compromised, leading to dusting and poor durability.



Finally, not curing concrete can also impact its appearance. Concrete that is not cured properly will have a dull, chalky appearance, making it unappealing and unattractive. This can lead to lower resale values and a decrease in overall property value.

Why it's Important

In conclusion, proper curing is an essential step in ensuring that residential concrete is strong, durable, and attractive. Neglecting this step can result in a range of negative consequences that can harm both the homeowner and the concrete contractor. To ensure the best possible outcome, it is recommended to use a high-quality cure & seal product and follow the manufacturer's instructions carefully.



SPECCHEM
Solution to Service

SPECPROS

For more informative
articles like this one, visit
specchem.com/resources





Paving Curing Compounds

Curing Compounds for highways, airports, parking lots, and more.



Pave Cure AMS

Pave Cure AMS is a high-solids white pigmented poly alpha-methylstyrene (AMS) concrete curing compound. When properly applied, Pave Cure AMS forms a continuous membrane that controls curing for strong and durable concrete. The white pigment reflects the sun's rays to help keep the concrete surface cooler and to prevent excessive heat buildup. Pave Cure AMS provides maximum retention for the most stringent concrete curing specifications. **ASTM C309, Type 2, Class A & B** and **ASTM C1315, Type 2** compliant. **DOT Approved.**

Available in 5, 55, or 275 gal units



Pave Cure CW

Pave Cure CW is a high-solids water-based clear wax concrete curing compound. When properly applied, Pave Cure CW forms a continuous membrane that controls curing for strong and durable concrete. Pave Cure CW is available in both clear and clear with dye. **ASTM C309, Type 1 and 1-D, Class A** compliant.

Available in 5, 55, or 275 gal units



Pave Cure Rez

Pave Cure Rez is a high-solids dissipating resin-based concrete curing compound. When properly applied, Pave Cure Rez forms a continuous membrane that controls curing for strong and durable concrete. Pave Cure Rez is ideal for application on exterior, horizontal surfaces such as highways, airports, street, and curb paving applications where proper curing and membrane dissipation is required. **ASTM C309, Type 1 and 1-D, Class A & B** compliant.

Available in 5 or 55 gal units



Pave Cure Rez White

Pave Cure Rez White is a high-solids water-based, resin-based white pigmented concrete curing compound. When properly applied, Pave Cure Rez White forms a continuous membrane that controls curing for strong and durable concrete. The white pigment reflects the sun's rays to help keep the concrete surface cooler and to prevent excessive heat buildup. **ASTM C309, Type 2, Class A & B** compliant.

Available in 5 or 55 gal units



PROJECT HIGHLIGHT



JFK Airport

Pave Cure Rez White, SpecStrip, SpecFilm

To ease traffic congestion and accommodate today's larger aircraft at one of the nation's busiest airports, the Port Authority of New York and New Jersey elected to reconstruct their largest runway, the 14,572 ft. 13R-31L, one of the longest commercial runways in the world. We were called on to provide an eco-friendly, VOC compliant curing solution that met the stringent specifications of NYDOT, ASTM, and the FAA. Nearly 90,000 gallons of Pave Cure Rez White was spray applied during the four months of construction.

Additionally, SpecFilm, an evaporation retardant, was used to protect the freshly placed concrete from accelerated surface water loss, and SpecStrip, a VOC compliant form release agent was utilized to provide clean, efficient form separation.



Pave Cure WW

Pave Cure WW is a high-solids, wax and water-based white pigmented concrete curing compound. When properly applied, Pave Cure WW forms a continuous membrane that controls curing for strong and durable concrete. The white pigment reflects the sun's rays to help keep the concrete surface cooler and to prevent excessive heat buildup. Pave Cure WW is ideal for application on exterior horizontal surfaces such as highways, airports, street, and curb paving applications where proper curing is required. **ASTM C309, Type 2, Class A** compliant. **DOT Approved.**

Available in 5 or 55 gal units



Pave Cure WW-300

Pave Cure WW-300 is a high-solids wax and water-based white pigmented concrete curing compound. Pave Cure WW-300 forms a continuous membrane that controls curing for strong and durable concrete. The white pigment reflects the sun's rays to help keep the concrete surface cooler and to prevent excessive heat buildup. **ASTM C309, Type 2, Class A, and CRD C300** compliant.

Available in 5 or 55 gal units



SpecCity White

SpecCity White is a white pigmented concrete curing compound. When properly applied, SpecCity White forms a continuous membrane that controls curing for strong and durable concrete. The white pigment reflects the sun's rays to help keep the concrete surface cooler and to prevent excessive heat buildup. SpecCity White is ideal for application on exterior horizontal surfaces such as street and curb paving applications when proper curing is required. **ASTM C309, Type 2, Class A** compliant.

Available in 5 or 55 gal units

CONNECT WITH US



Polishable Concrete Toppings

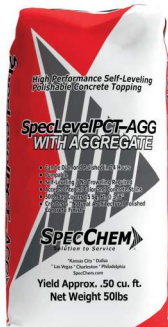
Formulated to enhance and refine the appearance of your concrete surfaces.



SpecLevel PCT

SpecLevel PCT is a cement-based, self-leveling polishable concrete topping designed for interior and exterior use. SpecLevel PCT produces a dense hard surface that can be diamond polished in as little as 24 hours. Mix SpecLevel PCT with water, pour, or pump, and it will seek its own level to produce a smooth, hard wearable surface.

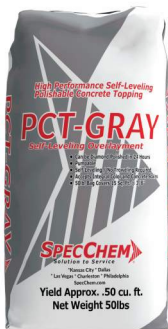
Available in 50 lb. bags



SpecLevel PCT AGG

SpecLevel PCT-AGG is a cement-based, self-leveling polishable concrete topping pre-extended with a special aggregate that when polished, creates an architectural natural polished concrete finish. SpecLevel PCT-AGG produces a dense hard surface that can be diamond polished in as little as 24 hours.

Available in 50 lb. bags



SpecLevel PCT Gray

SpecLevel PCT-GRAY is a cement-based, self-leveling polishable concrete topping that when polished, creates a consistent gray architectural finish. SpecLevel PCT-GRAY produces a dense hard surface that can be diamond polished in as little as 24 hours.

Available in 50 lb. bags

PLEASE VISIT OUR SITE FOR DETAILED INSTRUCTIONS TO DOWNLOAD THE APP

<https://app.specchem.com>



INSTALL
THE NEW AND IMPROVED
SPECHEM APP

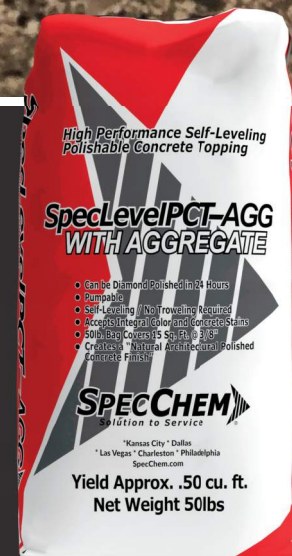




SPECLEVEL PCT-AGG

The premier choice for creating polished concrete surfaces. This pre-extended self-leveling polishable concrete topping produces a smooth, tough, and durable finish that is easy to use, quick to install, and self-leveling.

Formulated with a special aggregate that creates a natural concrete polished finish when polished. It's ideal for high-load rubber wheeled traffic, requiring a minimum thickness of 1/2", and can be applied in thicknesses from 3/8" to 1.5". It bonds strongly to the substrate and is normally walkable in 3 to 4 hours.



Available in 50 lb. bags

SpecChem's Polishable Concrete Toppings:

The Future of Concrete Flooring



Nick Carroll,
Upper Midwest
Regional Sales Manager,
Concrete Industry Expert

In the dynamic world of concrete construction, aesthetics and functionality are two vitally important aspects of concrete flooring. As distributors, contractors, architects, and engineers already know, achieving a consistent, visually appealing finish on a durable surface can sometimes be challenging but crucial for customers. Enter SpecChem's polishable concrete toppings—a game changer that marries the rugged reliability of concrete with the sophistication of polished finishes. From upscale retail spaces to expansive warehouses, the demand for such seamless overlays has been steadily rising, and for a good reason. In this deep dive, we'll explore SpecChem products, their distinct advantages, and why they've become the choice for industry professionals seeking both beauty and brawn in their flooring solutions.

SpecChem's Polishable Concrete Toppings

Spec Level PCT Gray – This is a base gray overlay.

Spec Level PCT – Offers a salt and pepper finish.

Spec Level PCT with Aggregate (PCT-AGG) –

A terrazzo-like finish with larger aggregate

While each of SpecChem's polishable concrete toppings brings its own set of advantages to the table, there's one product that has particularly caught the attention of the industry and deserves a closer look. SpecLevel PCT-AGG, with its distinct larger stone mix and versatility, stands out not only in our lineup but also in the wider market. Given its skyrocketing popularity and the unique value it offers, it's only fitting that we delve deeper into what makes the PCT-AGG so special and why it's rapidly becoming the preferred choice for many.



Spotlight on SpecLevel PCT-AGG: Revolutionizing Concrete Overlays

SpecLevel PCT-AGG comes with larger stone in the mix, simulating the look of polished concrete. It's especially useful for warehouse repairs, where the objective is to match the surrounding existing concrete. For instance, when flooring in a building is removed, often what's left is an unsightly concrete surface.

The solution? SpecLevel PCT-AGG. Unlike inconsistent ready-mix concrete, a premixed bag product ensures a consistent finish. This means no uneven patches or areas devoid of stone. It's for this reason that upscale retail areas like Tesla dealerships and Lululemon shops are veering towards polished overlays. These overlays aren't just aesthetically consistent, but they're also low maintenance and long-lasting.

Extended Workability

SpecLevel PCT products offer an extended working time of 5-10 minutes compared to other polishable concrete toppings. During the summer, when temperatures often soar to 90 degrees, having an additional five to ten minutes on our product can make the difference between a successful project and a potential failure. This is a significant selling point, and many field experts value this feature.

How SpecLevel PCT Reduces Labor Costs and Boosts Efficiency

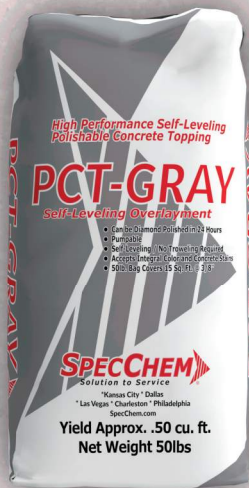
SpecLevel PCT also helps contractors save time and money. Many overlays harden quickly and reach higher PSI levels, making them challenging to cut. SpecLevel PCT hardens at a more controlled rate, gradually attaining a high PSI. This offers greater workability during the polishing process. Some contractors are able to start polishing with a 60-80 metal bond when diamond polishing. Eliminating a step in the polishing process leads to substantial savings in labor costs. In regions with high labor rates like Chicago, San Francisco, and Los Angeles, this becomes an even more compelling selling point.



SPECPROS

For more informative
articles like this one, visit
specchem.com/resources





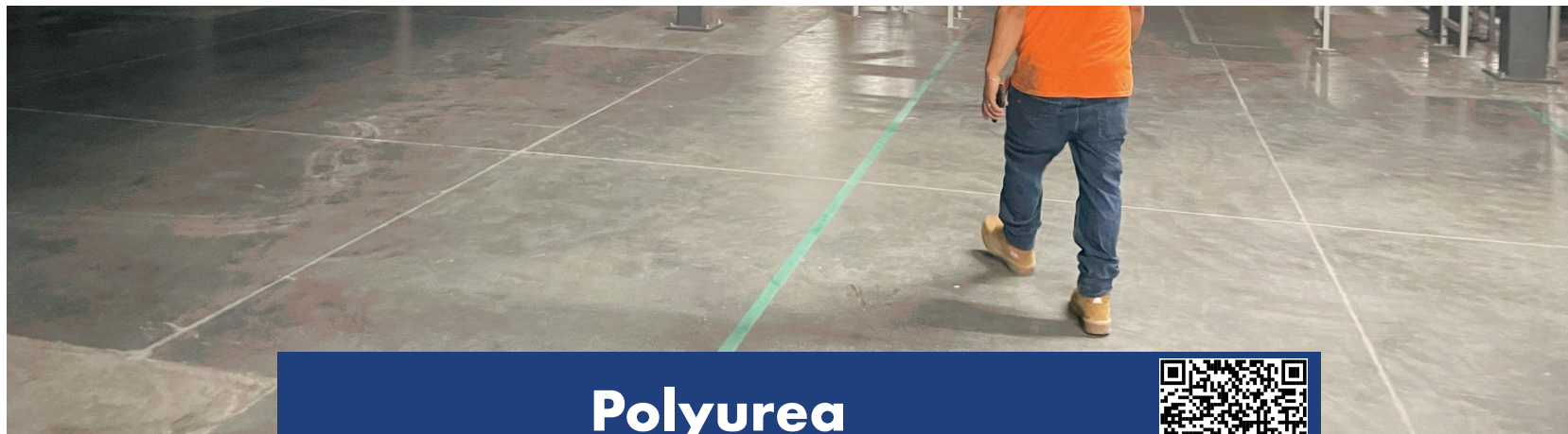
SPECLEVEL PCT-GRAY



SPECLEVEL PCT



SPECLEVEL PCT-AGG



Polyurea

Specialty joint fillers and concrete repair technology



Poly Fix®

Poly Fix® is a high-strength, two-component, ultra-low viscosity hybrid polyurethane concrete repair binder. Poly Fix® can be used to penetrate hairline cracks or, mixed with dry sand, to patch and repair concrete spalls or control joints. Poly Fix®'s water-like consistency also makes it an excellent crack healer/sealer for deteriorated concrete surfaces. **USDA accepted.**

Available in 22 oz. dual cartridges as well as 2 and 10 gal units



Rapid Flex 90

Rapid Flex 90 is a high durometer, 100% solids, two component, UV resistant, semi-rigid, rapid-curing, polyurea for filling control and construction joints in heavy duty industrial concrete floors. Rapid Flex 90 allows for joints to be shaved quickly for fast turnaround. Rapid Flex 90 is designed for use in compliance with ACI 302, section 4.10 recommendations for joint fillers used in saw cut/control joints with a Shore A Durometer of 90.

Available in 22 oz. dual cartridges as well as 10 gal units



Rapid Flex CJ

Rapid Flex CJ is a 100% solids, two-component, fast-setting UV-resistant, semi-rigid, rapid-curing, polyurea for filling control and construction joints in industrial concrete floors. Rapid Flex CJ allows for joints to be shaved quickly for fast turnaround. Rapid Flex CJ can also be used for the repair of damaged or spalled joint nosing and cracks. **ACI 302, section 4.10** compliant.

Available in 22 oz. dual cartridges as well as 10 gal units



Spec CJ Guard

A water-based blend of film-forming polymers that prevents staining of concrete due to overfill of epoxy or polyurea joint fillers. When applied to concrete adjacent to floor joints prior to filling, Spec CJ Guard dries to form a clear, glossy film that seals and protects the surface.

Available in Available in 1, 5, or 55 gal units

Rapid Flex

Colorant System



Warm Stone
Gray

Standard
Gray

Sage

Superior
Bronze

Cobble
Brown

Grizzly
Gray

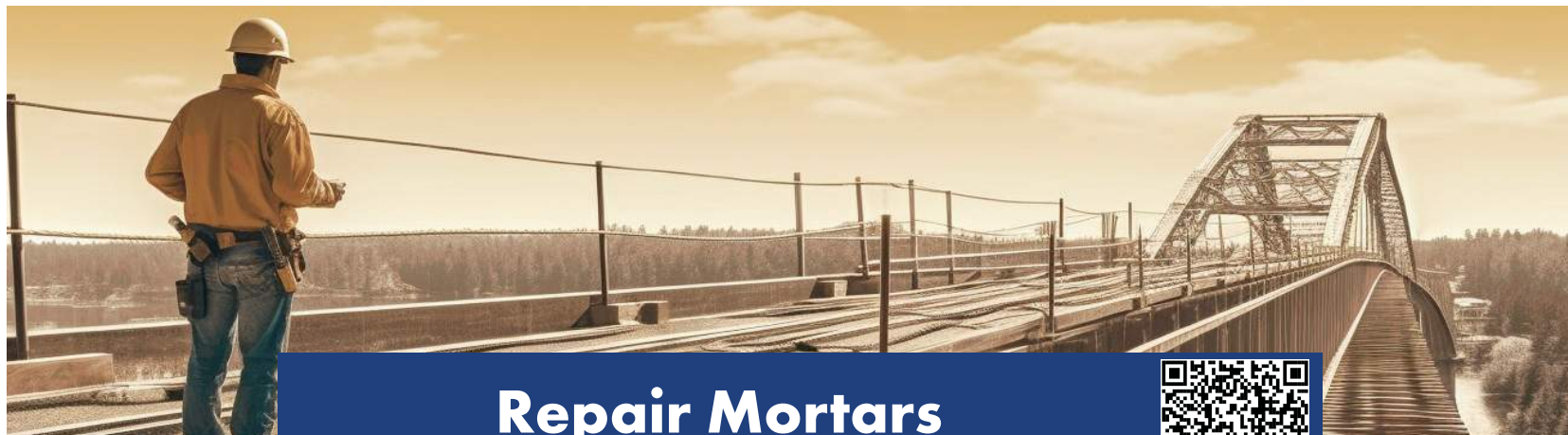
Rapid Flex CJ & Rapid Flex 90 – Control Joint Fillers

Our Rapid Curing, Semi-rigid Polyurea Control Joint Filler is now available in different colors.

Rapid Flex Colorant System is a concentrated pigment pack designed to pigment SpecChem's two-component polyurea control joint fillers. The Rapid Flex Colorant System simply mixes into a neutral base, providing custom colors for filling control joints on architectural colored and polished concrete floors. Our control joint color system offers the convenience of multiple colors without the high cost of extensive inventory.

**Compatible with both Rapid Flex CJ & Rapid Flex 90 Polyurea Control Joint Fillers.*





Repair Mortars

Formulated for repair, stabilization, and restoration of your concrete.



Duo Patch

Duo Patch is a two-component, polymer-modified concrete repair mortar with integral corrosion inhibitor for use in horizontal, form and pour, and when mixed to a stiffer consistency, vertical and overhead applications. Duo Patch offers superior durability in industrial warehouse, parking deck, and roadway applications subject to heavy loads and abrasion.

Available in 50 lb. bags



Final Finish™

Final Finish™ is a one-component, rapid-hardening, polymer-modified concrete resurfacing mortar for smoothing, resurfacing, rubbing, and restoring concrete surfaces. Sandless for ultra-fine repairs, Final Finish™ offers a unique long pot life, with rapid-hardening performance on the substrate to minimize waste and labor. Final Finish™ offers superior durability for all interior and exterior, horizontal, vertical, and overhead concrete applications.

Available in 40 lb. bags and 15 lb. pails



OverCrete

OverCrete is a one-component, polymer-modified concrete repair / resurfacing mortar for smoothing, resurfacing, and restoring concrete surfaces. OverCrete offers superior durability for all interior and exterior concrete applications.

Available in 40 lb. bags or pails



RepCon® 928

RepCon® 928 is a single-component, polymer-modified, fiber-reinforced, rapid-setting concrete repair mortar with corrosion inhibitor for use on concrete floors, highway pavements, bridge decks, and other applications requiring early resumption of traffic or use. RepCon® 928 incorporates the latest in polymer technology offering superior durability, performance, and ease of application without liquid activators for horizontal and vertical form and pour applications. **ASTM C928** compliant.

Available in 50 lb. bags



RepCon® 928 FS

RepCon® 928 FS is a very rapid-setting, polymer-modified, fiber-reinforced concrete repair mortar with corrosion inhibitor for use on concrete floors, highway pavements, bridge decks, and other applications requiring early resumption of traffic or use. RepCon® 928 FS incorporates the latest in polymer technology offering superior durability, performance, and ease of application without liquid activators for horizontal and vertical form and pour applications. **ASTM C928** compliant.

Available in 50 lb. bags



RepCon® H

RepCon® H is a single-component, polymer-modified, fiber-reinforced concrete repair mortar with integral corrosion inhibitor for use in a variety of screed or trowel-down horizontal repair applications. RepCon® H incorporates the latest in polymer technology, offering superior durability, performance and ease of application in industrial, commercial, and infrastructure applications. **ASTM C928** compliant.

Available in 50 lb. bags



RepCon® H-350

RepCon® H-350 is a single-component, polymer-modified, fiber-reinforced concrete repair mortar with integral corrosion inhibitor for use in a variety of screed, trowel-down or form and pour repair applications. RepCon® H-350 incorporates the latest in polymer technology offering superior durability, performance, and ease of application in industrial, commercial, and infrastructure applications. **ASTM C928** compliant.

Available in 50 lb. bags



RepCon® UW Mortar

RepCon® UW Mortar is a single-component, polymer-modified, fiber-reinforced concrete repair mortar for use in underwater hand-applied concrete repair applications. RepCon® UW Mortar is designed **only** for underwater use in tidal zones in applications from 1/2" up to several inches. RepCon® UW Mortar is specially formulated for minimal wash-out in salt-water, and is chloride and sulfate-resistant.

Available in 50 lb. bags



RepCon® V/O

RepCon® V/O is a single-component, polymer-modified, fiber-reinforced concrete repair mortar with integral corrosion inhibitor for use in a variety of vertical and overhead repair applications. RepCon® V/O incorporates the latest in polymer technology, offering superior durability, performance and ease of application in industrial, commercial, and infrastructure (DOT) applications.

Available in 50 lb. bags

SIMPLE STEPS TO THE GENERAL SURFACE PREP

STEP

1

Locate area to be repaired. Hammer sounding or chain drag are generally used when locating delamination.

STEP

2

Remove deteriorated concrete using acceptable methods. Surfaces of existing concrete expected to receive the repair material must be sound, clean, and free of bond inhibiting materials. An ideal sound surface is one of adequate compressive strength, free of any defects, with aggregate bonded to cement matrix.

STEP

3

Prepare surface repair boundaries to prevent feather edged conditions. This is generally done by saw cutting the perimeter to recess the edge.

STEP

4

Clean the surface of any exposed reinforcing steel and the existing concrete. Surface cleaning is critical to achieve an adequate bond between the repair and the existing concrete.

STEP

5

The moisture level of the existing concrete is critical to achieving a solid bond. An excessively dry substrate may absorb too much water from the repair material. Excessive moisture may clog the pores and prevent absorption of the repair material. SSD "saturated surface dry" or damp concrete is ideal prior to placing repair material.



SC Foundation Coating

SC Foundation Coating is a polymer-modified, cement-based waterproofing coating formulated to provide superior water-resistant concrete and masonry substrates. SC Foundation Coating is designed to waterproof the exterior surface of below grade concrete and masonry. SC Foundation Coating closes the internal voids in the substrate, but still allows full breathability.

Available in 50 lb. bags



PROJECT HIGHLIGHT



Westrock Coffee | Conway, AR

LithSeal SC

SpecChem, renowned for their top-notch products, partnered with the proficient team at Command Concrete for a substantial project in Conway, Arkansas. Covering an impressive 750,000 square feet, this project showcases their expertise in industrial flooring.

With the application of SpecChem's key solutions, including E-Cure, LithSeal SC, SpecTilt WB, and Rapid Flex 90, the project unfolded seamlessly. Command Concrete's skillful execution, combined with these high-quality products, resulted in an outstanding outcome that exceeded expectations. The final product is a highly durable industrial floor, an exemplar of quality that will undoubtedly leave lasting mark in the industry. This project is another commendable achievement for SpecChem and a testament to the collective excellence of the team.



SpecPatch Light

SpecPatch Light is a light gray colored, polymer-modified concrete repair mortar for concrete floors, walls, precast, tilt-up, and masonry surfaces. SpecPatch Light can be used for horizontal and vertical applications to provide a durable repair that can be shaped by shaving or sanding.

Available in 50 lb. bags



SpecPatch 5

SpecPatch 5 is a general purpose, polymer-modified, **fast-setting** concrete repair mortar for concrete floors, walls, precast, tilt-up, and masonry surfaces. SpecPatch 5 can be used for horizontal and vertical applications to provide a durable repair that can be shaped by shaving or sanding.

Available in 50 lb. bags



SpecPatch 15

SpecPatch 15 is a general purpose, polymer-modified concrete repair mortar for concrete floors, walls, precast, tilt-up, and masonry surfaces. SpecPatch 15 can be used for horizontal and vertical applications to provide a durable repair that can be shaped by shaving or sanding, and sets in approximately 15 minutes.

Available in 50 lb. bags



SpecPatch 30

SpecPatch 30 is a general purpose, polymer-modified concrete repair mortar for concrete floors, walls, precast, tilt-up, and masonry surfaces. SpecPatch 30 can be used for horizontal and vertical applications to provide a durable repair that can be shaped by shaving or sanding.

Available in 50 lb. bags



SpecPlug

SpecPlug is a durable, fast-setting hydraulic cement mortar that stops flowing water through holes and cracks in concrete and masonry surfaces. SpecPlug will not shrink or oxidize.

Available in 50 lb. bags or pails

WHAT IS ASTM C928?

This specification covers packaged, dry, cementitious mortar or concrete materials for rapid repairs to hardened hydraulic-cement concrete pavements and structures.

Materials that contain organic compounds, such as bitumens, epoxy resins, and polyesters, as the principal binder are not included. Packaged, dry, concrete material contains aggregate of which at least 5% by mass of the total mixture is retained. Packaged, dry, mortar material contains aggregate of which less than 5% by mass of the total mixture is retained.

Aqueous solutions, aqueous emulsions or dispersions may be included as components of the packaged materials. Aggregates must be included as a component of the packaged materials. Both packaged dry concrete and mortar shall be mechanically mixed with the use of a mixing liquid.

Different test methods shall be performed in order to determine the following properties: compressive strength, length change, scaling resistance, and slant shear bond strength.

Industry Knowledge



Super SpecPlug

Super SpecPlug is a durable, super fast-setting hydraulic cement mortar that stops flowing water through holes and cracks in concrete and masonry surfaces. Super SpecPlug **sets in 90 seconds** and will not shrink or oxidize.

Available in 50 lb. bags or pails



SpecPrep SB

SpecPrep SB is a three-component, long open time, cement/epoxy bonding adhesive and anti-corrosion rebar coating. SpecPrep SB offers up to a 24 hour open time and a structural bond for fresh concrete or repair mortars to existing concrete. SpecPrep SB also provides an anti-corrosion, protective coating for steel rebar in concrete restoration. SpecPrep SB will resist penetration of water and chlorides but will not form a vapor barrier after cure.

Available in 1 or 3.75 gal units



SpecRock

SpecRock is a one-component, waterproof, non-shrinking, Portland cement-based anchoring cement that sets hard in 12-15 minutes. It expands as it sets and locks into the surrounding concrete.

Available in 50 lb. pails



SpecShot Plus

SpecShot Plus is a fiber-reinforced shotcrete mortar for use in a variety of vertical and overhead repair applications. SpecShot Plus incorporates the latest in fiber technology, offering superior durability, performance and ease of application in industrial, commercial, and infrastructure (DOT) applications. SpecShot Plus can be applied by dry shotcrete (gunite) method or by mixing with water in a wet mix method.

Available in 50, 80, or 3000 lb. bags



SpecSmooth

SpecSmooth is a one-component, polymer-modified concrete repair and resurfacing mortar for smoothing, resurfacing, rubbing, and restoring concrete surfaces. SpecSmooth offers superior durability for all interior and exterior, vertical, overhead, and horizontal concrete applications. Ideal for repairs from a feather edge up to 1/4", SpecSmooth can also be used as a skim patch or trowel-down underlayment for horizontal repairs subject to light traffic.

Available in 50 lb. bags



Total Patch

Total Patch is a very rapid-setting, multi-purpose, concrete repair mortar for use on concrete floors, highway pavements, and other applications requiring high early strength and early resumption of traffic or use.

Available in 50 lb. bags



Aqua Plug

Por-Rok Aqua Plug's instant setting can be achieved in 2-3 minutes to stop pressure leaks in concrete and masonry surfaces. This rapid set allows Aqua Plug to bond mechanically and chemically to saturate surfaces.

Available in 50 lb. pails



Pro Plug 45

Pro Plug 45 is a hydraulic cement formula designed to set at three (3) times the speed of ordinary quick set plug. Instant setting can be achieved in 45 seconds to stop pressure leaks in concrete and masonry surfaces. This rapid set allows Pro Plug 45 to bond mechanically and chemically to saturate surfaces.

Available in 50 lb. pails



PROJECT HIGHLIGHT



18th Street Expressway | Kansas City, MO

SpecChem's RepCon® 928, SpecFilm RTU, and Pave Cure Rez.

SpecChem's RepCon® 928, SpecFilm RTU, and Pave Cure Rez products were used to repair and restore the 18th Street Expressway, a crucial freeway in Kansas City, Kansas. This project, undertaken by Comanche Concrete, involved tearing out large areas on the expressway and executing 4-inch patches.

RepCon® 928 was mixed with pea gravel in a bulk auger mixer to create a robust repair material. SpecFilm RTU was applied as an evaporation retarder to counteract rapid moisture loss due to windy conditions, ensuring a controlled curing process. The Pave Cure Rez was then used as a curing compound over RepCon® 928, following guidelines given by KDOT & SpecChem, reinforcing the quality of the repair work.

The 18th Street Expressway, which connects Interstate 35 to Interstate 70/U.S. Route 24/U.S. Route 40, is a vital transportation artery in Kansas City, and our products played a key role in restoring its structural integrity. This project underscores SpecChem's commitment to providing reliable, high-performance concrete repair solutions for infrastructure development and restoration projects across the nation.

Self-Leveling Underlayments

Formulated compounds designed to create a smooth and level surface.



Sleek 1000 SLU

Sleek 1000 SLU is a cement-based, non-shrinking, self-leveling floor underlayment designed for interior use. This single-component product produces a smooth subfloor that can be feather edged and is compatible with adhesives for carpet and tile. Just mix Sleek 1000 SLU with water, pour or pump, and it will seek its own level to produce a smooth, flat hard surface.

Available in 50 lb. bags



SpecFlow

SpecFlow is a cement-based, non-shrinking, self-leveling floor underlayment designed for interior use. This single-component product produces a smooth subfloor that will accept floor coverings in as little as 12-18 hours after installation. Just mix SpecFlow with water, pour or pump, and it will seek its own level to produce a smooth, flat, hard surface.

Available in 50 lb. bags



SpecPrime

SpecPrime is a ready-to-use, rewettable, tinted primer which bonds new concrete and SpecChem underlayments to horizontal concrete or other sound surfaces. Recommended for interior and dry applications only. *Specifically designed as a primer for SpecFlow.*

Available in 1, 5, or 55 gal units



MVM Prime 5000

MVM Prime 5000 is a two-component, 100% solids epoxy moisture barrier system designed to effectively stop moisture vapor related problems on concrete prior to installing SpecChem underlayments or overlayments.

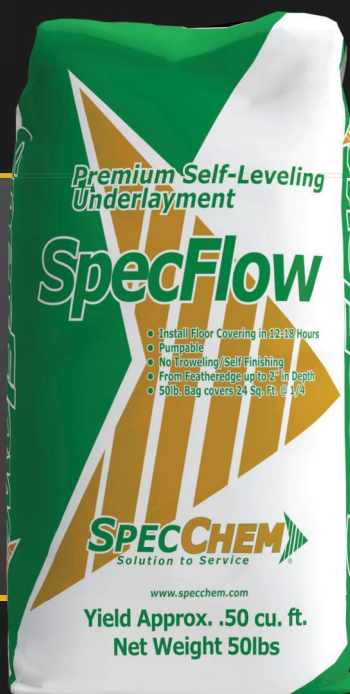
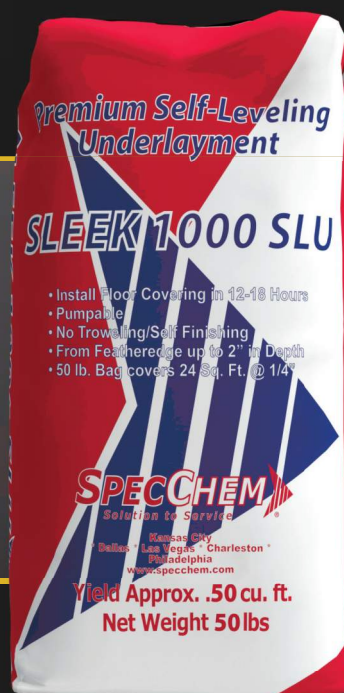
Available in 1, 5, or 55 gal units



SLEEK 1000 SLU

SELF-LEVELING UNDERLAYMENT

- ✓ CAN BE FEATHEREDGED WITHOUT FEAR OF CHIPPING OR SPALLING
- ✓ CAN BE PUMPED
- ✓ PRODUCES A SMOOTH, BLEMISH-FREE SURFACE
- ✓ REQUIRING NO GRINDING OR SANDING
- ✓ SELF-LEVELING, REQUIRES NO TROWEL



SPECFLOW

SELF-LEVELING FLOOR UNDERLAYMENT

92-95 BAGS AT 1/2" PER 1,000 SQ. FT.

- ✓ CAN BE PUMPED
- ✓ SELF-LEVELING, REQUIRING NO TROWEL
- ✓ SMOOTH, BLEMISH-FREE SURFACE, REQUIRING NO GRINDING
- ✓ CAN BE FEATHEREDGED WITHOUT FEAR OF CHIPPING OR SPALLING
- ✓ FLOW TIME OF 20 MINUTES AT 70°





Experience THE ULTIMATE Highest Quality Epoxies

Epoxy Product Selection Chart

PRODUCT	ASTM C-881	Use Category	Features	Gel Time *	Recommended Use
SPECPOXY 500 Bonding Crack injection	Grade 1 Types I, II, IV, V Class B, C	Bonding agent, injection resin	Ultra-Low Viscosity High Modulus	25 min. in mass 1 hr in thin film	A two component, very low viscosity, moisture insensitive, high modulus, structural epoxy for bonding concrete, steel and wood. Gravity feed or pressure injection crack repairs. Anchoring bolts, dowels and reinforcing bar.
SPECPOXY 1000 Bonding Crack injection	Grade 1 Types I, II, IV, V Class B, C	Bonding agent, injection resin	Low Viscosity High Modulus	30 min. in mass 1 hr in thin film	Structural fine crack injection repair for: .007 - .020in/ .18 - .51 mm Binder for grout and mortar. Structural bonding of fresh to hardened & old to old concrete
SPECPOXY 2000 Bonding & Corrosion Inhibiting	Grade 2 Types I, II, IV, V Class B, C	Bonding agent, injection resin	Medium Viscosity High Modulus	30 min. in mass 1 hr in thin film	Structural bonding of fresh to hardened & old to old concrete. Structural crack repair for .007 - .030in/.18-.76mm. Structural adhesive for concrete, metal, wood, etc
SPECPOXY 3000 Anchoring Bonding	Grade 3 Types I, II, IV, V Class B, C	Non-sag, thixotropic nonabrasive, injectable, anchoring gel	High viscosity, non-sag, easy to mix	30 min. in mass 1 hr in thin film	Chemical anchoring, cap seal & port setting epoxy. Structural crack repair for .030-.060in/.76-1.5 mm. Blind injection where backside cap sealing is not practical. Structural grouting, anchoring, pinning overhead patching, mating irregular surfaces
SPECPOXY 3000 FS Anchoring Bonding	Grade 3 Types I, II*, IV, V* Class A, B, C	Non-sag, thixotropic nonabrasive, injectable, anchoring gel	Fast setting, high viscosity, non-sag gel, easy to mix	5-10 min in mass 1 hr thin film	Chemical anchoring, cap seal & port setting epoxy. Structural crack repair for .030-.060 in/ .76-1.5 mm. Blind injection where backside cap sealing is not practical. Structural grouting, anchoring, pinning overhead patching, bonding irregular surfaces
SPECPOXY BINDER Binder/Adhesive	Grade 1 Type III Class B, C	Low modulus moisture tolerant epoxy binder/ adhesive	Low modulus epoxy binder adhesive	45 Min. in mass	A skid resistant epoxy binder adhesive for overlays that can be easily blended with aggregates for mortar repairs.
SPECPOXY CJ Control Joint Filling	NA	Semi-rigid control joint filler	Semi-rigid shaves easily, fast, pourable	30 Min. in mass	Filling and sealing saw-cut control joints Not for expansion joints
RAPID FLEX CJ Control Joint Filling	NA	Semi-rigid control joint filler	Fast setting, UV stable, concrete gray color	30-40 seconds	Filling and sealing interior control joints Not for expansion joints. Interior crack repair.
SPECPOXY GROUT Machine Grouting	NA	Epoxy machine grout and general purpose grout	High strength, good oil and chemical resistance	3.5 hr in mass	Precision alignment of compressors and machinery. Grouting under sole plates. Crane rail grouting. Applications subjected to dynamic loads.
SPECPOXY SEALER Sealer	NA	Penetrating Epoxy Sealer	70% solids, two component, low viscosity sealer	Pot life 35 min.<4 hrs this film	Bridge decks/parking decks, auto/truck repair bays, concrete crack healer and dustproofer, concrete subjected to chemical mild attack, manufacturing plants, floor restoration
SPECPOXY COATING Coating	NA	High-build epoxy coating	100% solids two component, high performance floor coating system	Pot life 40-50 min. Foot traffic in 24 hours. Wheel traffic in 48 hours	Food processing plants, auto/truck repair bays, warehouse floors, chemical plants, manufacturing plants, floor restoration projects
SPECPREP SB Anti-Corrosion Bonding Agent	NA	Long open time, cement/epoxy bonding adhesive and rebar coating	Bonds fresh concrete, bonds steel to concrete, VOC compliant/ Solvent free	1 hour	Used for bonding fresh concrete to hardened concrete, bonding steel to fresh concrete, anti-corrosion coating for steel reinforcement, and is easy to apply by spray or brush.

Specialty Epoxies

Control Joint Filler & Concrete Repair.



Spec CJ Guard

A water-based blend of film-forming polymers that prevents staining of concrete due to overfill of epoxy or polyurea joint fillers. When applied to concrete adjacent to floor joints prior to filling, Spec CJ Guard dries to form a clear, glossy film that seals and protects the surface.

Available in Available in 1, 5, or 55 gal units



SpecPoxy 500

SpecPoxy 500 is a two-component, very low viscosity, moisture insensitive, high modulus, structural epoxy bonding adhesive and crack injection resin. SpecPoxy 500 is 100% solids, solvent free, low odor, and high-strength. **ASTM C881, Type I, II, IV, and V, Grade 1, Classes B & C** compliant.

Available in 15 oz. dual cartridges as well as 1, 3 or 15 gal units



SpecPoxy 1000

SpecPoxy 1000 is a two-component, low viscosity, moisture insensitive, high modulus, structural epoxy bonding adhesive and crack injection resin. SpecPoxy 1000 is 100% solids, solvent free, low odor, and high-strength. **ASTM C881, Type I, II, IV, and V, Grade 1, Classes B & C** compliant.

Available in 15 oz. dual cartridges as well as 1, 3 or 15 gal units

PLEASE VISIT OUR SITE FOR DETAILED INSTRUCTIONS TO DOWNLOAD THE APP

<https://app.specchem.com>



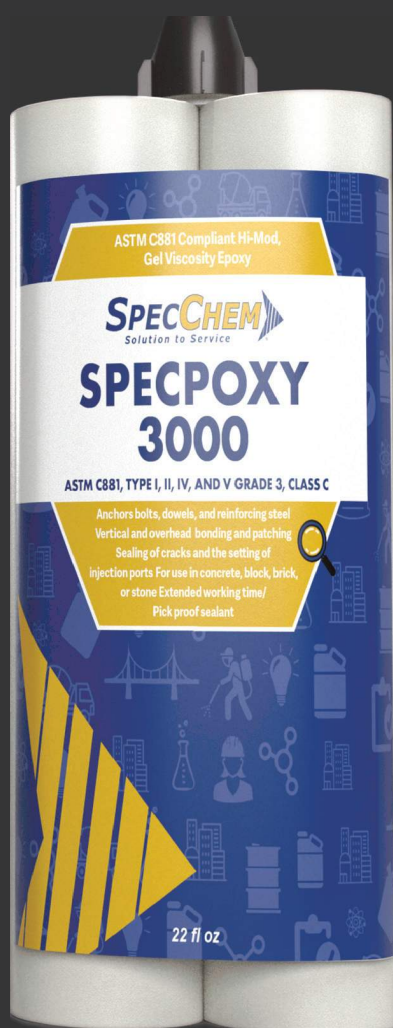
INSTALL
THE NEW AND IMPROVED
SPECHEM APP





HIGHEST QUALITY
PRODUCTS IN THE INDUSTRY

SPECPOXY 3000

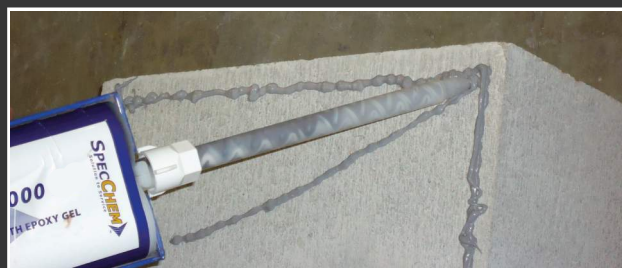


SPECPOXY 3000

SpecPoxxy 3000 is a two-component, moisture insensitive, high modulus, structural epoxy bonding gel.


SpecPoxxy 3000 is 100% solids, solvent-free, low odor, high-strength, and non-sag. VOC content = 0 grams/liter.

- Extended working time
- Vertical and overhead structural bonding and patching
- For use in concrete, block, brick, or stone
- Sealing of cracks and the setting of injection ports
- Anchors bolts, dowels, and reinforcing steel



SCAN TO LEARN
MORE ABOUT
SPECPOXY 3000

Contact Us For More Information.

 **816-968-5600**



SpecPoxy 2000

SpecPoxy 2000 is a two-component, multi-purpose, high modulus, moisture tolerant epoxy bonding adhesive that meets the requirements of ASTM C881. SpecPoxy 2000 is a 100% solids, solvent free, medium viscosity bonder. **ASTM C881, Type I, II, IV, and V, Grade 2, Classes B & C** compliant.

Available in 22 oz. dual cartridges as well as 1, 2 or 10 gal units



SpecPoxy 2000 LPL

SpecPoxy 2000 LPL is a two-component, long pot life, multi-purpose, high modulus, moisture tolerant epoxy bonding adhesive that meets the requirements of ASTM C881 and is an ideal product for bonded overlays. **ASTM C881, Type I, II, IV, and V, Grade 2, Classes B & C** compliant.

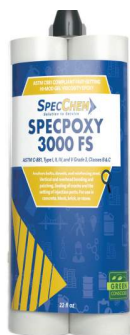
Available in 1, 3 or 15 gal units



SpecPoxy 3000

SpecPoxy 3000 is a two-component, moisture insensitive, high modulus, structural epoxy bonding gel. SpecPoxy 3000 is 100% solids, solvent-free, low odor, high-strength, and non-sag. SpecPoxy 3000 is great for vertical and structural bonding and patching, sealing of cracks and the setting of injection ports, and anchoring bolts, dowels, and reinforcing steel. **ASTM C881, Type I, II, IV, and V, Grade 3, Class C** compliant.

Available in 22 oz. dual cartridges as well as 1, 2 or 10 gal units



SpecPoxy 3000 FS

SpecPoxy 3000 FS is a fast-setting, two-component, moisture insensitive, high modulus, structural epoxy bonding gel. SpecPoxy 3000 FS is 100% solids, solvent free, low odor, high-strength, and non-sag. **ASTM C881, Type I, II, IV, and V, Grade 3, Classes B & C** compliant.

Available in 22 oz. dual cartridges as well as 1, 2 or 10 gal units



SpecPoxy Binder

SpecPoxy Binder is a two-component, multi-purpose, low modulus, moisture tolerant epoxy binder adhesive that meets the requirements of **ASTM C881**. This solvent-free, low viscosity bonder is shock absorbent and more flexible to sustain movement resulting from thermal changes. **ASTM C881, Type III, Grade 1, Classes B & C** compliant.

Available in 1, 2, or 10 gal units



PROJECT HIGHLIGHT



International Airport: Kansas City, MO

SpecPoxy 3000 FS, E-Cure®, Cure & Seal 25, Orange Peel, SC Multi-Purpose Grout

The KCI Airport expansion, Kansas City's largest single infrastructure project with a budget of \$1.5 billion and covering over 1 million square feet, extensively utilized SpecChem's innovative products—SpecPoxy 3000 FS, E-Cure, Cure & Seal 25, Orange Peel, and SC Multi-Purpose Grout. These SpecChem solutions were pivotal in overcoming construction challenges, facilitating rapid bonding, effective curing, durable sealing, efficient stripping, and robust grouting.

SpecChem's involvement in this significant project not only underscores their dedication to providing top-tier construction materials but also showcases their capacity to significantly contribute to the success of monumental projects. The effective application of SpecChem products throughout the KCI Airport expansion is a clear demonstration of their industry leadership and commitment to advancing construction technology, ensuring the project's standing as a benchmark for future infrastructure developments.

WHAT IS ASTM C881?

This specification covers two-component, epoxy-resin bonding systems for application to Portland cement concrete, which are able to cure under humid conditions and bond to damp surfaces.

Type 1 - Non-load bearing, bonding hardened concrete to hardened concrete.

Type 2 - Non-load bearing, bonding fresh concrete to hardened concrete.

Type 3 - Bonding skid-resistant materials to traffic bearing surfaces.

Type 4 - Loading bearing, bonding hardened concrete to hardened concrete.

Type 5 - Loading bearing, bonding fresh concrete to hardened concrete.

Grade 1 - Low viscosity (water-motor oil)

Grade 2 - Medium viscosity (syrup-honey)

Grade 3 - Gel (peanut butter-caulk)

Class A - Application temperature <40°F

Class B - Application temperature 40-60°F

Class C - Application temperature >60°F

Industry Knowledge



SpecPox CJ

SpecPox CJ is a two-component, semi-rigid epoxy for filling control and construction joints in industrial concrete floors. This product supports the joint edges and reduces spalling of the edges caused by wheel traffic. SpecPox CJ is useful for contraction/construction joints that are cut or formed. SpecPox CJ may be used for the repair of damaged or spalled joint nosing and cracks. **ACI 302, section 4.10** compliant.

Available in 2 or 10 gal units



SpecPox Coating

SpecPox Coating is a two-component, high-performance epoxy coating system designed to provide concrete and steel surfaces with excellent abrasion resistance in combination with protection against chemical attack. These outstanding properties are further enhanced by the availability of a selection of semi-gloss colors or clear for superior aesthetic benefits.

Available in 3 or 15 gal units

SAFE AND EFFECTIVE



SpecPox Binder and SpecPox Coating are both environmentally friendly, VOC compliant products specially engineered to bind and blend as well as provide concrete and steel surfaces with excellent abrasion resistance in combination with protection against chemical attack – these outstanding properties are further enhanced by the availability of a selection of semi-gloss colors for superior aesthetic benefits. Both of our *SpecPox* products are ideal, green-conscious, and low VOC options when adhesive binder or coating are needed.



SpecPoxy Grout

SpecPoxy Grout is a specially formulated three-component, 100% solids, high-strength, low exotherm epoxy grout. The system combines a high-strength epoxy resin and curing agent with a specially engineered blend of graded aggregates. The special aggregate blend provides excellent flow and uniform distribution throughout the high-strength epoxy matrix. Also available in high strength.

Available in .5 or 2 cubic foot units



SpecPoxy Mortar

SpecPoxy Mortar is a three-component, 100% solids, multi-purpose, epoxy mortar. The system combines a high-quality epoxy binder with an engineered blend of graded aggregates. Specifically engineered to provide superior trowelability, compressive/tensile strength, impact, and chemical resistance for use in industrial and commercial applications such as warehouse floors, ramps, loading docks, and rebuilding joint nosings.

Available in .5 or 1 cubic foot units



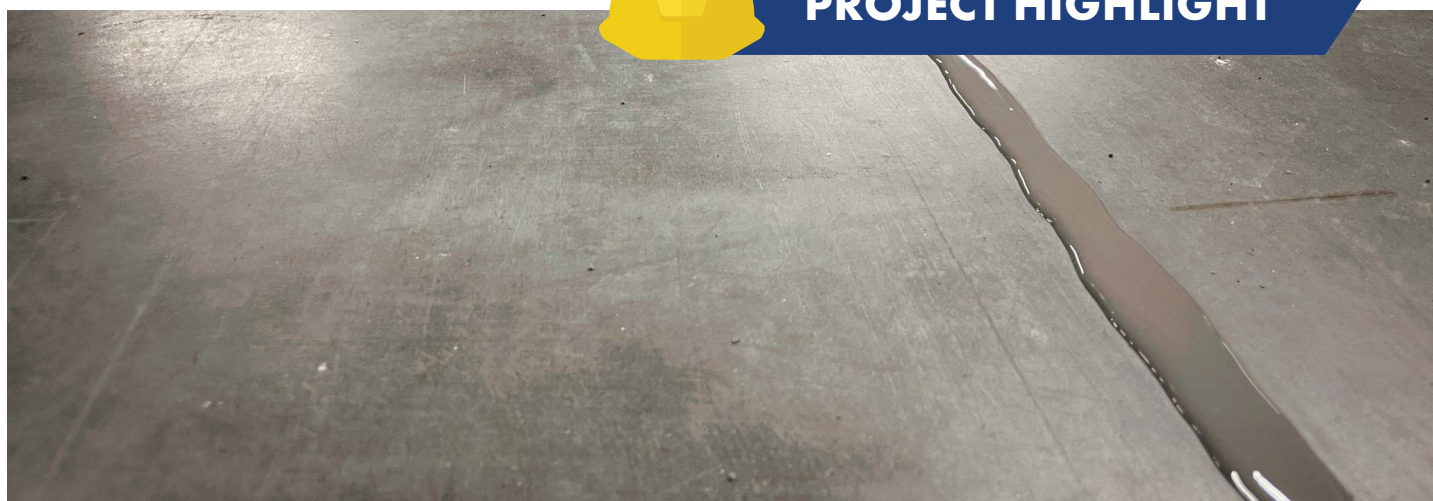
SpecPoxy Sealer

SpecPoxy Sealer is a high-solids, two-component low viscosity penetrating epoxy sealer designed to protect new and existing concrete against de-icing salts and chemical attack. SpecPoxy Sealer penetrates into the concrete pores to form a sub-surface seal to resist the penetration of liquids contaminants, chloride ions, and chemical penetration. Its low viscosity also provides an excellent crack healer/sealer to many deteriorated concrete surfaces.

Available in 2, 10, or 110 gal units



PROJECT HIGHLIGHT



Yazoo Mills

SpecPoxy Binder, SpecPoxy Mortar, Poly Fix, and Rapid Flex CJ

This Yazoo Mills loading rehab project was a success with the help of SpecChem's comprehensive offering for the repair and restoration of warehouse and industrial floors and floor joints. The products used in this project included SpecPoxy Binder, which was broadcast and used as a seal coat, SpecPoxy Mortar, Poly Fix, and Rapid Flex CJ for repairs. These products were expertly applied, resulting in a durable and long-lasting solution for the loading dock area.

WHEN STRENGTH MATTERS



From a 5.5-acre retractable roof to 19 million+ pound retractable fields, SpecChem's *high strength* epoxy grout products are **strong, reliable, and built to bear** the kinds of loads that make them an easy - and *optimal* - choice for the **biggest, toughest** jobs in the industry.



Surface Retarders

Designed to expose an aggregate finish from fresh concrete.



SpecEtch

SpecEtch is a spray-applied, chemical surface retarder specially engineered to expose the underlying aggregate of freshly placed horizontal concrete. SpecEtch comes ready-to-use, is non-flammable, and will not alter the color of the aggregate or concrete. SpecEtch has a typical etch of 3/8".

Available in 5 or 55 gal units



SpecEtch Deep

SpecEtch Deep is a spray-applied, chemical surface retarder specially engineered to expose the underlying aggregate of freshly placed horizontal concrete. SpecEtch Deep comes ready-to-use, and is easy to apply. SpecEtch Deep is non-flammable, VOC compliant, and has a typical etch of 5/8".

Available in 5 or 55 gal units



Versa Etch

Versa Etch is a state of the art, water-based concrete surface retarder that does not require plastic covering to protect the surface. Versa Etch is available in 7 standard depths of etch, from a very light acid wash up to 5/8" in depth for your decorative applications.



Available in 5 or 55 gal units



Versa Etch Extender

Versa Etch Extender is a VOC compliant, water-based, coating designed to be used with Versa Etch Surface Retarders. When properly applied, Versa Etch Extender will help create a uniform etched surface and will extend the removal time of Versa Etch several hours depending on application conditions.

Available in 5 or 55 gal units



Tilt-Up Bond Breakers

Industry-leading tilt-up bond breaker products.



SpecChem tilt-up bond breakers are chemically reactive and specially engineered to provide a clean, easy lift of tilt-up panels. They contain no diesel, kerosene, waxes, or silicones.



CleanLift 20/20

CleanLift 20/20 is a chemically reactive water-based tilt-up cure/bond breaker specially engineered to provide a clean, easy lift of tilt-up panels and meet the moisture retention of ASTM C309. CleanLift 20/20 contains no diesel, kerosene, waxes or silicones, and is formulated to be more identifiable on the casting bed.

Available in 5 or 55 gal units



SpecTilt 100

SpecTilt 100 is a chemically reactive, solvent-based tilt-up bond breaker specially engineered to provide a clean, easy lift of tilt-up panels. SpecTilt 100 contains no diesel, kerosene, waxes, or silicones. SpecTilt 100 allows clean panels to lift easier, leaves no resin stains, is chemically reactive, and leaves no residue.

Available in 5 or 55 gal units



SpecTilt EX

SpecTilt EX is a chemically reactive tilt-up bond breaker specially engineered to provide a clean, easy lift of tilt-up panels. SpecTilt EX is formulated with a unique solvent blend for fast-drying, solvent-based performance along with VOC compliance in the OTC/LADCO/MRPO regions.

Available in 5 or 55 gal units



SpecTilt WB

SpecTilt WB is a chemically reactive, water-based tilt-up cure/bond breaker specially engineered to provide a clean, easy lift of tilt-up panels, and meet the moisture retention of ASTM C309. SpecTilt WB contains no diesel, kerosene, waxes, or silicones.

Available in 5 or 55 gal units



PROJECT HIGHLIGHT



BridgeWay Station: Mauldin, SC

SpecTilt WB, OverCrete

SpecChem played a key role in Mauldin, South Carolina's BridgeWay Station development, spanning 400,000 square feet. SpecTilt WB ensured flawless execution of tilt-up wall panels, while OverCrete transformed walls with an inviting hue. This project highlights SpecChem's commitment to quality and sustainability. Awarded a TCA Tilt-Up Achievement Award, SpecTilt WB offers clean panel lifts and VOC compliance, while OverCrete provides durability and ease of application.

SIMPLE STEPS TO THE TILT-UP SYSTEM

1 Prevent SpecFilm

SpecFilm is designed to be used as an evaporation retardant and finishing aid on concrete flatwork of all types. When sprayed over fresh concrete, SpecFilm forms a thin, continuous film which prevents rapid moisture loss from the concrete surface.



2 Lift SpecTilt WB

SpecTilt WB is chemically reactive tilt-up cure and bond breaker specially engineered to provide a clean, easy lift of tilt-up panels.



3 Clean Orange Peel

Orange Peel concentrate is a cost effective, natural citrus solvent, cleaner and degreaser. Orange Peel is an innovative cleaning solution for the toughest industrial applications.



4 Seal SpecHard

SpecHard is a proprietary, colorless chemical solution that increases the wear surface strength of concrete floors subjected to pedestrian and vehicle traffic. SpecHard penetrates concrete surfaces to seal, densify and harden.



5 Fill Rapid Flex CJ or SpecPoxy CJ

Our control joint fillers are both engineered to offer strength and protection for your control and construction joints in industrial concrete floors. Both are two-component products, coming in a semi-rigid epoxy or a rapid-curing, fast-setting polyurea.



Water Repellents

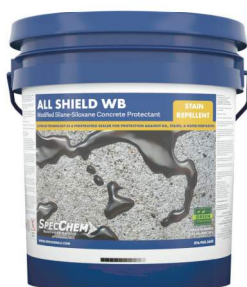
100% reactive penetrating water repellents.



All Shield EX

All Shield EX is an exempt solvent, low VOC, synthetic modified, silane-siloxane concrete protectant. This clear, penetrating, breathable protectant is designed for use on interior/exterior, horizontal/vertical concrete, natural or synthetic stone surfaces to resist oil, water, food stains, and many other liquid contaminants.

Available in 1, 5 or 55 gal units



All Shield WB

All Shield WB is a low VOC, waterborne, synthetic modified, silane-siloxane concrete protectant. This clear, penetrating, breathable protectant is designed for use on interior and exterior concrete, natural or synthetic stone surfaces to resist water, oil, food stains, and many other liquid contaminants. All Shield WB penetrates the surface and bonds directly with the substrate, which results in a surface that is highly-resistant to moisture, staining and de-icing salts. VOC compliant in the **OTC/LADCO/MRPO** regions.

Available in 1, 5 or 55 gal units



SpecShield SB

SpecShield SB is a 100% reactive, solvent-based silane-siloxane sealer. This clear, penetrating, breathable water repellent is designed for use on interior and exterior above grade concrete or masonry surfaces. SpecShield SB penetrates the surface and bonds directly with the substrate, which results in a surface that is highly-resistant to both moisture and salt.

Available in 5 or 55 gal units



SpecShield WB

SpecShield WB is a 100% reactive, waterborne silane-siloxane sealer. This clear, penetrating, breathable water repellent is designed for use on interior and exterior above grade concrete or masonry surfaces. SpecShield WB penetrates the surface and bonds directly with the substrate, which results in a surface that is highly-resistant to both moisture and salt.

Available in 5 or 55 gal units



SpecSilane 20 WB

SpecSilane 20 WB is a 20% solids, 100% reactive, waterborne silane sealer. This clear, penetrating, breathable water repellent is designed for use on interior and exterior above grade concrete or masonry surfaces. SpecSilane 20 WB penetrates the surface and bonds directly with the substrate, which results in a surface that is highly-resistant to both moisture and salt.

Available in 5 or 55 gal units



SpecSilane 40

SpecSilane 40 is a 40% solids, 100% reactive, silane sealer. This clear, penetrating, breathable water repellent is designed for use on interior and exterior above grade concrete or masonry surfaces. SpecSilane 40 penetrates the surface and bonds directly with the substrate, which results in a surface that is highly-resistant to both moisture and salt.

Available in 5 or 55 gal units



SpecSilane 40 WB

SpecSilane 40 WB is a 40% solids, 100% reactive, waterborne silane sealer. This clear, penetrating, breathable water repellent is designed for use on interior and exterior above grade concrete or masonry surfaces. SpecSilane 40 WB penetrates the surface and bonds directly with the substrate, which results in a surface that is highly-resistant to both moisture and salt.

Available in 5 or 55 gal units



SpecSilane 100

SpecSilane 100 is a 100% solids, 100% reactive, silane sealer. This clear, penetrating, breathable water repellent is designed for use on interior and exterior above grade concrete or masonry surfaces. SpecSilane 100 penetrates the surface and bonds directly with the substrate, which results in a surface that is highly-resistant to both moisture and salt.

Available in 5 or 55 gal units



Waterproofing & Damp Proofing

Designed to patch, repair, protect, waterproofing, damp proofing and protecting asphalt surfaces.



Max-A-Patch ACP®

Max-A-Patch ACP is a high-quality, pre-mixed, all-weather, permanent asphalt cold patch. An optimal choice for all types of pavement repair jobs, such as dangerous potholes, wide cracks, or ruts, Max-A-Patch ACP is ready and open to traffic within minutes in any type of weather.

Available in 50 lb. bags



Max-A-Seal Asphalt Paint

Max-A-Seal Asphalt Paint is a quick drying, high gloss, bituminous, corrosion resistant asphalt paint and offers one coat coverage with full resistance to water, acids, alkalis, electrolysis, and natural elements.

Available in 5, 55, 275 gal units



Max-A-Seal DP®

Max-A-Seal DP is a non-fibred emulsion coating designed to meet **ASTM D1227**, Type III specification. This material is an asphalt emulsion with selected colloids to formulate a damp proofing coating that resists water penetration while allowing moisture vapor to escape.

Available in 5, 55, 275 gal units



Max-A-Tack TTC®

Max-A-Tack TTC is an anionic trackless tack coat emulsion that is used primarily as a tack coat. This product can also be diluted 10% with water and used as a fog seal. Max-A-Tack TTC is manufactured to meet applicable state specifications.

Available in 5, 55, 275 gal & bulk units



Max-A-Seal WP®

Max-A-Seal WP is an anionic emulsion that is latex modified. This material is an emulsion with colloids and polymers to formulate a waterproofing coating. Max-A-Seal WP can be used for exterior below grade or between slab application.

Available in 5, 55, 275 gal & bulk units



**PATCH. REPAIR.
PROTECT.**



ASPHALT PATCHING, WATERPROOFING & DAMP PROOFING

Our Max-A-Guard line of VOC compliant products is specially formulated to **patch, repair, and protect asphalt** surfaces, and features our premium, DOT approved, 0 VOC asphalt cold patch. Additionally, our asphalt emulsion coatings are designed specifically for **waterproofing, damp proofing and protecting surfaces** on exterior below grade and between-slab applications.

ENGINEERED TO
REPEL



The Highest Quality Concrete Chemicals

SPECCHEM 
Solution to Service



**The Industry Standard for *toughness* and
protection of your concrete surfaces.**

SpecShield WB - uniquely engineered to provide a surface that is *impermeable* to moisture and salt. Clear, penetrating, breathable water repellent - *nothing* repels moisture and *protects* your concrete surfaces - fresh or existing - like SpecChem's SpecShield WB.

Protect your investment. Get the Ultimate.

www.specchem.com | 816.968.5600

SPECMASTERS

INDUSTRY BEST-IN-CLASS TRAINING



If you've ever been to one of our SpecMasters sessions, you already know that we provide exceptional value to the industry in the form of our best-in-class training programs. We host annual 2-3 day programs in our 7,600-sq. foot training facility, where distributors from all over the country and internationally come and enjoy interactive, hands-on product, application and industry information in an exciting and engaging environment.

We also host numerous ad-hoc product and application demos year-round for distributors, contractors, and trade associations in this facility, as well as product demos, job site visits, and lunch & learns all over the country, designed to educate distributors, contractors, and the specification community.

You think SpecChem training is a fit for you and your organization? Contact your SpecChem sales representative, or drop us a note online at SpecChem.com to see how we can help empower your organization.



Chemical Products Training



Cementitious Products Training



Speciality Products Training



VIRTUAL TRAINING

Our comprehensive online SpecMasters program is meant to mirror our highly-regarded SpecMasters program held annually in Kansas City – not to replace it, but to create something more accessible to those with busier schedules.

Packed with the latest tools, resources, presentations, and video content to further your understanding of the technology, application, and how to sell our products. Offering multiple different courses - chemical products, cementitious products, specialty products, and sales product training - SpecMasters is the most extensive training for concrete construction building materials in the industry.

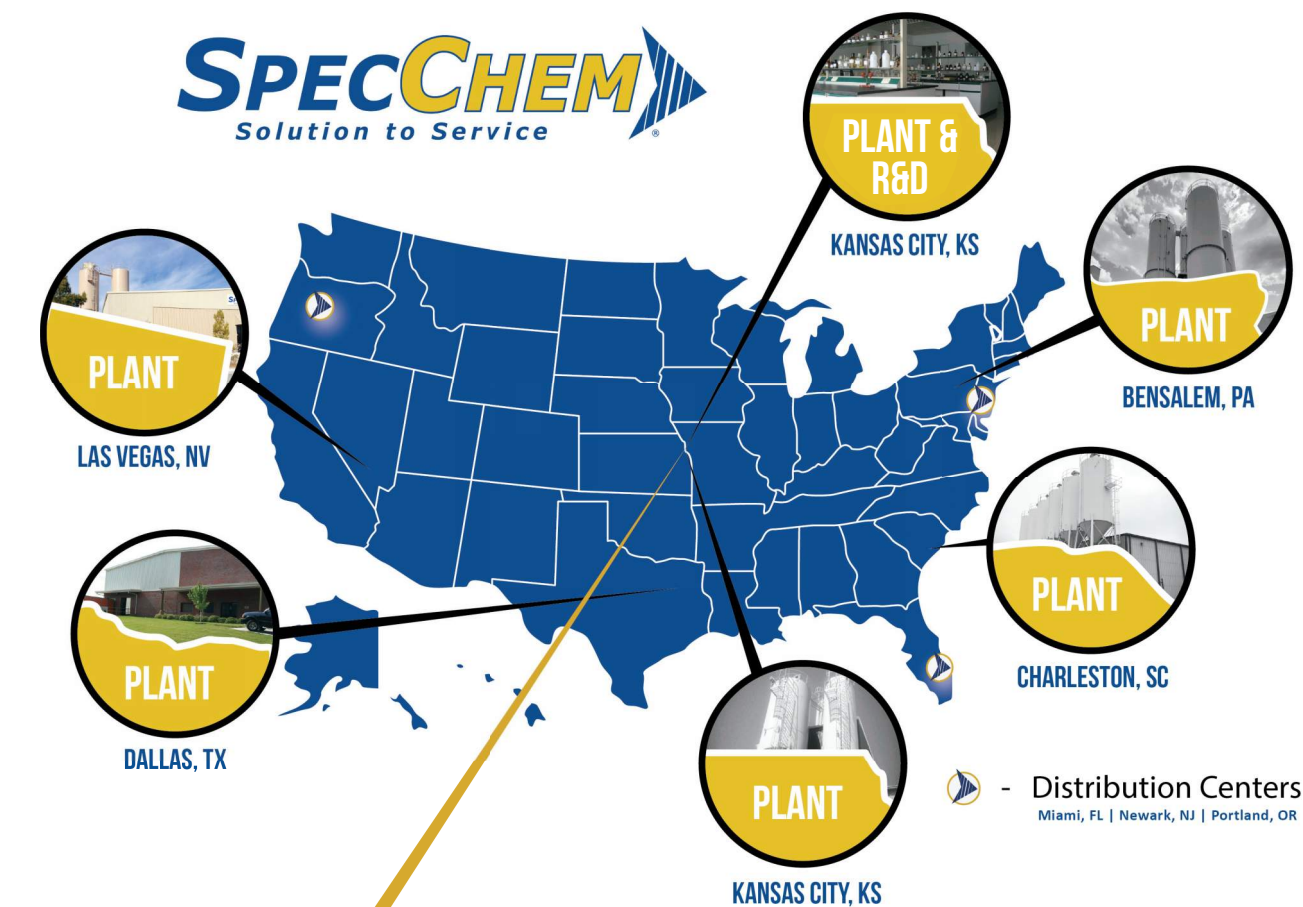
The ultimate goal is to empower you to add more value, sell more products, with more confidence, and get more familiar with SpecChem and our line of products.

NATIONWIDE DISTRIBUTION, SALES, AND SUPPORT

We maintain six state-of-the-art manufacturing plants strategically located to serve all major markets, ensuring cost-effective and on-time shipping to every major market in the continental United States.

With regional sales offices and a national sales force serving every major market in the country, we've built a nationwide distribution model that allows us to provide best-in-class products, top-rated customer service & support, and – by leveraging location-based raw materials advantages – competitive pricing.

Contact your SpecChem sales representative, or drop us a note online at SpecChem.com for distribution in your area.



Baltimore

Kansas City, MO

Located in the heart of downtown Kansas City, the historical, six-story Lowe & Campbell building has been part of an \$18 million renovation and serves as the headquarters for SpecChem.



Sunshine

Kansas City, KS

Nestled just minutes away from our Richmond plant in Kansas City, our recently acquired storage building is a strategic addition to our operations. This facility safeguards our inventory and mitigates potential supply chain disruptions, reinforcing our commitment to seamless product availability.



Richmond

Kansas City, KS

Richmond, only minutes away from our Baltimore headquarters location, has the distinction of being our first plant, and of being capable of producing any of our liquid chemical products and epoxies. Richmond also houses our laboratory and our R&D team, along with our 7,600 square foot training facility.



Chopper

Harleyville, SC

Chopper is a 70,000-square-foot comprehensive manufacturing plant/warehouse. Located in the heart of the Southeast, it caters to the eastern seaboard. The addition of four new tanks increases our liquid manufacturing capacity and allows us to provide our customers with faster lead times and more cost-effective freight rates.



Bunker

Edwardsville, KS

Another Kansas City-based manufacturing plant, Bunker handles primarily cementitious products. Bunker's strategic location, just off of the Kansas River, offers us an unique competitive edge. Our immediate access to key raw materials - some of the best sand in the country for use in high-strength grouts, structural repair mortars, and other cementitious materials - gives us an incomparable advantage in terms of logistics.



Star

Farmersville, TX

This state-of-the-art manufacturing plant, located just north of Dallas, is also strategically located to leverage logistical advantages. Proximity to raw materials suppliers, and general location - allowing for wide geographic coverage - give us yet another competitive advantage when it comes to keeping prices competitive and getting product to customers on time.



Sinatra

Las Vegas, NV

Serving the Southwest, Sinatra is one of our manufacturing plants. Sinatra produces a wide variety of SpecChem products, including a full line of cementitious, epoxy, and liquid technologies. This plant is also strategically located in the Southwest to effectively serve the West Coast.



Liberty

Bensalem, PA

Liberty, our newest plant not only adds a strategically located sixth manufacturing plant to SpecChem's footprint, but also adds a tremendous amount of experienced industry professionals to the SpecChem team. The Pennsylvania-based manufacturing plant is our largest producer of high-performance cementitious building products.

Product Category	SpecChem	Euclid/Tamms	BASF	SIKA	
Cleaners & Strippers					
	Berry Clean				
	Orange Peel	Euco Clean & Strip	Citrus Degreaser		
	Sealer ReNew				
	Solvent 100				
	SpecBlast	Concrete Blaster			
Curing Compounds and Cure & Sealers					
	Crystal Rez				
	Cure & Seal 25	Diamond Clear, Rez Seal, Super RezSeal	MasterKure CC 250 SB		
	Cure & Seal 25 EX				
	Cure & Seal 25 UV	Luster Seal 300, Super Diamond Clear	MasterKure CC 250 SB		
	Cure & Seal 25 UV EX				
	Cure & Seal 25 UV EX				
	Cure & Seal 30		MasterKure CC 300 SB		
	Cure & Seal 30 EX				
	Cure & Seal EX				
	Cure & Seal WB	Aqua-Cure VOX, Diamond Clear VOX	MasterKure CC 160 WB		
	Cure & Seal WB 25	Super Aqua-Cure VOX, Super Diamond Clear VOX			
	Cure & Seal WB 30				
	Cure Shield				
	Cure Shield EX				
	Cure Shield WB				
	E-Cure®				
	PolyCure				
	SC Cure 500				
	SpecRez	Kurez DR VOX, Kurez 100			
Decorative & Protective Sealers					
	All Shield EX				
	All Shield WB				
	Aqua Shine	Lusterseal 300 WB, Everclear VOX			
	Crystal Shine	Everclear 350			
	Crystal Shine Matte				
	Deco Shine	Ever Clear			
	Deco Shine Brown EX				
	Deco Shine Matte				
	SC Multi-Purpose Sealer				
	Surface Grip				
	Surface Shine	Luster Seal, Diamond Clear		Aggribrite VOC	
	Surface Shine Brown				
	Surface Shine Brown EX				
	Surface Shine EX	Luster Seal 350, Super Diamond Clear 350		Aggribrite VOC	
	Surface Shine Gray				
	Surface Shine Gray EX				
	Surface Shine WB				

PRODUCT COMPARISON

	W.R. Meadows.	Dayton	Misc.	Misc.	Misc.
		J-48	(NX) BioClean	L&M Citrex	Vexcon MoistureBloc Floor Cleaner & Strip
			Prosoco 600	Vexcon Certi-Vex Concrete Remover	
				Crystal Rez	
	CS-309-25	J-20, J-22	L&M Dress & Seal 25	ChemMasters Spray-Cure & Seal 25	TK-Kure & Seal 1315
				Cure & Seal 25 EX	
	CS-309-35, Tiah, Decra-Seal	J-22UV, J-25	L&M LumiSeal Plus	ChemMasters Traz 25	Lambert Corp. Exposit 5B
				Cure & Seal 25 UV EX	
	CS-309-30, Decra-Seal	J-23, J-25	(NX) Cure & Seal 1315 A	L&M Dress & Seal 30	Certi-Vex Gloss Sealer FT
	VOCOMP-20	J-18, J-19	(GS) Multi-Purpose Sealer	(NX) Cure & Seal 120 E, L&M Dress & Seal WB	Lambert Corp. Glazecote 20
	VOCOMP-30	J-19, J-22 WB, Cure & Seal 1315 EF	(NX) Cure & Seal 250 E	L&M Dress & Seal WB 25, Chemical Lumiseal WB Plus	V-Seal Industra-Gloss 350
			ChemMasters Silencure-A		
			ChemMasters Silencure-SRT		
	1100-Clear	J9 - A, Clear Cure VOC J-7WB	L & M Cure R, W-2, Vexcon Certi-Vex Envio RC 1000	Anti-Hydro Curing Compound #2 WP WB, Lambert Aqua Kure Clear	ChemMasters Safe-Cure 1000, Nox-Crete Res Cure DH 100
		Ultra Seal EF	(GS) "Wet Look II" Sealer	(NX) Sparkl-Seal E	(S) CureSeal - W
	Expo-Gloss OTC		(GS) Wet Lacquer 2000		
	Decra-seal	J-25	(GS) Original Wet Lacquer	(NX) Sparkl-Seal	(S) CureSeal - S
			(S) CureSeal - S Matte		
	Tiah	J-24	(NX) Nox-Carb		
	Tiah	J-24	(NX) Nox-Carb		

Product Category	SpecChem	Euclid/Tamms	BASF	SIKA	
Dry Shake Hardeners					
	Quartz Floor Hardener	Surflex	MasterTop 100		
	SpecPlate	Eucoplate HD			
	SpecPlate NOX	Euco Diamond Plate			
	SpecPlate Topping	Super Euco Top			
Evaporation Retardant					
	IntraFilm				
	SpecFilm Concentrate	Eucobar	MasterKure ER 50 Sika Film	Sika Film	
	SpecFilm RTU				
Form Release Agents & Form Treatment					
	Bio Strip WB	Form-EZE Natural			
	Deco Liquid Release				
	Dry Deck WB				
	Dry-Deck WB				
	EZ Clean & Release				
	Form Seasoning WB				
	Precast 80				
	SpecStrip	Form Shield Pure	Cast-Off		
	SpecStrip Plus	FormShield G			
	SpecStrip Supreme	Crystal Release VOC			
	SpecStrip Ultra Blue				
	SpecStrip VOC 100				
	SpecStrip WB	FormShield WB			
	TriAct				
	V-Release				
Grouts & Anchoring Cement					
	Por-Rok				
	Por-Rok Concrete Patch				
	SC Metallic Grout	NS Metallic Grout	Embeco 885		
	SC Multi-Purpose Grout	NS Grout/NC Grout	MB Construction Grout, MasterFlow 713, MasterFlow 555	SikaGrout 212	
	SC Precision Grout	Hi-Flow Grout	MasterFlow 928	SikaGrout 328	
	SC Precision Grout HS		Masterflow 4316	SikaGrout 428FS	
	SpecPoxo Grout				
	SpecPoxo Grout HS				
	SpecRock				
	Super Por-Rok				
	UW Grout	Tremie Grout		SikaGrout UW	
Latex Bonding Agent					
	Plaster Bond				
	SpecPrep 5B	Duralprep AC		Sika Armatec 110	
	SpecPrime				
	SpecWeld	EucoWeld, Tammsweld	Eco Weld		
	Strong Bond	Flex-con, Akkro-7t	MasterEmaco A660	Sika Latex Acrylic, Sika Latex R	
	Stucco Bond	EucoWeld 2.0			

PRODUCT COMPARISON

	W.R. Meadows.	Dayton	Misc.	Misc.	Misc.
		Quartz Tuff	Quartzplate FF	US Spec Dense Top	Anti-Hydro S-Q Hardener
			Day1		
	Evapre	J-74, Aquafilm Conc	L&M E-Con	TK-Tri-Film 2120	LambcoSkin
	Evapre-RTU	Aquafilm, J-74 RTU			
		J-4 Bio, J-1EF, Farm Fresh XL	Crete-Lease BioTru	NoxCrete Bio-Nox	
			NoxCrete PCE		
			NoxCrete Form Clean		
			Crete-Lease 880	NoxCrete RA-10, RA-10 250	
	Duogard, Duogard Citrus, Duogard NE	J-1, J-1-A	Cresset 727, Cresset Super Strip 60, Kaufman FormKote OTC	L&M E-Z Strip, Debond, ChemMasters Release	NoxCrete Chembeton 250, Lambert Form Release 88 VOC
		J-2			
	Duogard Plus	J-3	Crete-Lease 880 VOC	NoxCrete Form Coating 250, Plus	L&M DeBond Gold
			Western Blue Ribbon	NoxCrete Aluminox	
	Duogard II				Lamberts Corp. Form Release WB
			NoxCrete Deactivator		
			Ameristar QuikRok	Hartline Rocktite	
		Dayton Metallic Grout	Anti-Hydro Apxandcrete	ChemMasters Met-OX Grout	
	SG-86, CG-86	#1107	CTS MP Grout	L&M Duragrout	Lambert Vibrapruf #11, Quikcrete Precision Grout, Five Star Grout
	588	High Performance Grout, SureGrip High Performance Grout	Five Star Fluid 100 Grout	L&M Crystex	
			Five Star Strength Grout		
			US Concrete Products HP Underwater Grout	Vexcon Certi-Vex Grout UW, Kaufman UW Grout	Five Star High Strength UW Grout
			Lanco CB-900	Lambert Acryl Bond	
	Everweld	J-41	Larsen's Weld Crete	L&M Everweld	TK-Tri-Bond, Kaufman Sure Weld
	Acryl-Loc	J-40	L&M Everbond, Mapei Planicrete AC	TK-Liquid Bonding Agent 225, Kaufman Sure Bond	US Concrete Products HP Bondit
			Lambert 932 Link	Lanco CB-1000	

Product Category	SpecChem	Euclid/Tamms	BASF	SIKA	
Liquid Hardener					
	Cure Hard	Eucosil	MasterKure HD 110 WB		
	LithSeal Lite	Ultrasil LI+			
	LithSeal SC				
	SpecGuard	Ultra Guard			
	SpecHard-Intraseal	Euco Diamond Hard	MasterKure HD 210 WB		
	Spec-O-Lith	SurfHard	Lapidolith, HD 300WB		
Paving Curing Compounds					
	Pave Cure AMS				
	Pave Cure CW				
	Pave Cure Rez	Kurez DR VOX, Kurez R 100			
	Pave Cure Rez White				
	Pave Cure WW	Kurez VOX White Pigmented			
	Pave Cure WW-300				
	SpecCity White				
Polishable Concrete Toppings					
	SpecLevel PCT				
	SpecLevel PCT-AGG				
	SpecLevel PCT Grey				
Polyureas					
	Poly Fix	Quikstitch			
	Rapid Flex 90				
	Rapid Flex C.J	Euco QWIKjoint UVR		Sika Loadflex 524 EZ	
Repair Mortars					
	Duo Patch	Tammspatch II, DuraTop Flowable Mortar	Sonopatch 300	Sika Top 111 and 122 Plus	
	Final Finish	Tammscrete		Sika Smooth	
	Overcrete				
	OverCrete Coarse	Euco Recover			
	OverCrete Fine	Thin Top Supreme			
	Por-Rok Aqua Plug				
	Pro Plug 45				
	RepCon 928	Versaspeed LS	Master Emaco 10-61	Sikaquick 1000	
	RepCon 928 FS	Versaspeed		Sikaquick 2500	
	RepCon H	Concrete Top Supreme	MasterEmaco R310 CL, Emaco 566	Sika Set Mortar	
	RepCon H-350				
	RepCon UW Mortar	Speed Crete Blue Line	Master Emaco 10-60		
	RepCon V/O	Verticoat Supreme, Verticoat, V-100	Master Emaco N425, Sonopatch 200	Sika Top 123 Plus, Sikaquick VOH	
	RevCrete	Thin-Top Supreme, Euco Recover		SikaLevel SkimCoat	
	SC Concrete Finish				
	SC Foundation Coating				
	Sleek 1000 SLU				
	SpecCrete Plus SCC				
	SpecFlow	Flo-Top, Super Flo-Top		Sika Level 125	
	SpecPatch 15	Speed Crete Red Line		Sika Repair 223, Sika Quick VOH	
	SpecPatch 30	Eucopatch, Thin Patch	MasterEmaco N 425, Sonopatch TC	Sika Repair 222	
	SpecPatch 5	Speed Crete Red Line			
	SpecPatch Light	Speed Crete Red Line			
	SpecPlug	Speed Plug	BASF Masterseal 590 (Waterplug)	Sikaset Plug	
	SpecPrep 5B				
	SpecRock	Euco Rock	MasterFlow 110AN		
	SpecShot Plus				
	SpecSmooth	Tammscrete			
	Super SpecPlug				
	Total Patch				

PRODUCT COMPARISON

	W.R. Meadows.	Dayton	Misc.	Misc.	Misc.
	Med-Cure	J-13	L&M Chem Hard, Lambert Guardseal	L&M Cure, Kaufman Silicure	ChemMasters Chemisil, Nox-Crete Bro-Cure
	Liqui-Hard Ultra	Pentra Hard-Densifier	ConSolideck LS CS	NoxCrete Duro-Nox LSC	
			ConSolideck LS, NoxCrete Duronox HSC	L&M Lion Hard, Divergent Pentrasil NL	Mapei Mapecrete™ Hard LI
		Pentra-Hard Guard	(NX) DuroPolish Plus	TK-LS Hard N Guard Lithium Silicate Blend	Prosoco LS Guard
	Liqui-Hard	J-17	Ashford Formula	(NX) DuroNox	L&M Seal Hard
			Lambert Corp. Solidus®	Vexcon StarSeal PS Clear	
	2250				
	1100-Clear	Clear Resin Cure	(RP) Clear Water Resin	L&M Cure R	TK-DC WB Dissipating Cure 2519
	1200-White	White Resin Cure	(RP) White Water Resin	L&M Cure R-2	
	1600-White	White Wax Cure	(RP) White Water Wax	(NX) DOT Road Cure WW	L&M Cure W
		J9-A	(NX) CityCure WW		
			Rapid Set TRU Self Leveling	Ardex PC-T	
			Tru PC		
			Tru Gray		
			Metzger McGuire Rapid Refloor	Roadware 10 Minute Mender	Ardex Ardifix
				Metzger McGuire Edge Pro 90	
			VersaFlex SL 85, 88 / Adhesives Technology Crackbond JF 311	Metzger/McGuire RS 88	Ardex Ardiseal Rapid Plus
	Meadow-Patch T2	Special Patch	Ardex CD	Vexcon Certi-Vex Patch	Lyons PatchCrete
			Rapid Set Wunderflox, Ardex TWP	NoxCrete Panel Patch	Pro Spec Feather Edge
			Mapei Mapecem Quikpatch	Ardex CD	Lambert Renew Coat Broom
				Ardex CD Fine	Lambert Renew Coat Trowel
	Futura 45		Rapid Set DOT Repair Mix, Five Star Structural Concrete	Cement All CTS Rapid Set	Vexcon Certi-Vex Rapid Patch
		Dayton HD-50	Five Star Hwy Patch		
	Futura 15	Polyfast	EMACO 566	US Spec H2	Conproco Conpro Set, Quick Shot
			Five Star Products Structural Concrete: Underwater HP	Vexcon Certi-Vex Patch UW	
		Permapatch V/O	Ardex B20, Mapei Plantiop X, XS	CTS Mortar Mix, Five Star Structural V/O	Rapid Set V/O Repair Mix
			Rapid Set Skim coat	Ardex CD Fine and Coarse	Vexcon Certi-Vex All Patch
			Bostik Level 1		
			Ardex K15, LU 100, K10, V1200	Rapid Set LevelFlor, Laticrete Drytek Levelex, SilPro Silflo 220	Mapei Ultraplan Easy, Novoplan Easy, Self Leveling Plus
			Ardex OVP, SKM, CP	Lyons Cast Patch, HB Fuller Blendcrete	L&M Duracrete
	Meadow-Patch 20, T-1	Recrete, Thin Resurfacer	Lyons Pave Crete	L&M Duracrete, HB Fuller Blendcrete	Ardex GPS, Ardex CP, Rapid Set Cement All
			Rapid Set Cement All	US Concrete Products US Thin Patch V/O 103	US Spec Quickset 20
	Meadow-Patch T1			HB Fuller Blendcrete	Kaufman Hi Cap
	Meadow-Plug		L&M Duraplug	Lambert Lambco® Plug	Lyons Plug-Crete
	Speed-E-Roc	Anchor All, Anchoring Cement	Super Por Rock, Ameristar Quik Rok	Quikrete Anchoring Cement Exterior Use	Lyons Flow-Rock
		Architectural Finish	US Spec 3-2-1	Ardex OVP™, TWP™	
			SilPro TDQ	CTS Cement All	

Product Category	SpecChem	Euclid/Tamms	BASF	SIKA	
Self-Leveling Underlayments					
	Sleek 1000 SLU				
	SpecFlow	Flo-Top, Super Flo-Top		Sika Level 125	
Specialty Epoxies					
	MVM Prime 5000				
	Spec CJ Guard				
	SpecPoxy 1000	Dural #452 LV	MasterInject 1701	Sikadur Hi Mod 35	
	SpecPoxy 2000	Dural #452 MV	MasterEmaco ADH 330	Sikadur Hi Mod 32	
	SpecPoxy 2000 LPL				
	SpecPoxy 3000	Dural #452 Gel	MasterEmaco ADH 335	Sikadur Hi Mod 31	
	SpecPoxy 3000 FS	Dural Fast Set Gel	Rapid Gel	Sikadur Hi Mod 33	
	SpecPoxy 500	Dural 50	MasterEmaco P 160	Sikadur 51	
	SpecPoxy Accelerator				
	SpecPoxy Binder	Flexolith	MasterSeal 350	Sikadur 22	
	SpecPoxy C.J.	Euco 700	MasterSeal CR 335, 190	Sikadur 51 SL	
	SpecPoxy CJ				
	SpecPoxy Coating	Durakote 240	MasterTop 1213	Sikafloor 261, Sikagard 62	
	SpecPoxy Grout	E-3F, E-3G, E-3HP, Polygrout	MasterFlow 648 CP	Sikadur 42	
	SpecPoxy Grout HS				
	SpecPoxy Mortar	Duralflex Fastpatch		Sikadur 43, Patch-Pak	
	SpecPoxy Sealer	Dural 50 LM	MasterFlow GP, MasterEmaco P 160		
Surface Retarders					
	SpecEtch	Concrete Surface Retarder S		Rugasol S	
	SpecEtch Deep				
	Versa Etch				
Tilt-Up Bond Breakers					
	Clean Lift 20/20				
	SpecTilt 100				
	SpecTilt EX				
	SpecTilt WB				
Water Repellents					
	All Shield EX				
	All Shield WB				
	SpecShield EX				
	SpecShield SB				
	SpecShield WB	Weather-Guard, ChemStop WB, Baracade WB 244	White Roc 10 WB		
	SpecShield WB Extra				
	SpecSilane 100	Baracade Silane 100C			
	SpecSilane 20 WB				
	SpecSilane 20WB				
	SpecSilane 40				
	SpecSilane 40 WB				
	SpecSilane 40WB	Baracade Silane 40	Masterprotect H-400		

PRODUCT COMPARISON

	W.R. Meadows.	Dayton	Misc.	Misc.	Misc.
			Bostik Level 1		
			Ardex K15, LU 100, K10, V1200	Rapid Set LevelFlor, Laticecrete Drytek Levelex, SilPro Silflo 220	Mapei Ultraplan Easy, Novoplan Easy, Self Leveling Plus
	Rezi-Weld LV	J-56	Concressive 1375, Kaufman Surepoxy HMLV	(AT) Crackbond LR 321	TK-Epoxy Patch 211
	Rezi-Weld 1000	J-58, Pro Poxy 204	Concressive LPL, Kaufman Surepoxy HM	(AT) Ultrabond 2100	TK-EPO 2000 Bonding Agent
	Rezi-weld Gel Paste	J-50, Pro-Poxy 300	Concressive 1444, Kaufman Surepoxy HM Gel	(AT) Ultrabond 2300	Quikrete DOT Anchoring Epoxy
	Rezi-Weld Gel Paste	J-51 FS, Pro-Poxy 300 Fast	(AT) Ultrabond 1300	TK-Epoxy Crack Filler 9000	DeNeef Denepox Rapid Gel
		Pro Poxy 40 LV LM			
			TK-Epoxy Bridge Deck Overlay 2109	Poly-Carb, Inc, Mark-151.6, 154 Safe- T-Grid, 163	
	Rezi-Weld Flex	J-52, Pro-Flex	Metzger McGuire MM-80	Tennant Eco-EJF System	Metzger-McGuire MM-80, MM80P
		J-37	ChemMasters Duraguard 120	Tennant Eco-CEP	Vexcon PowerCoat Epoxy HD
	Rezi-Weld 3/2	J-55, Pro-Poxy 2000 NS, Five Star Epoxy Grout	L&M EpogROUT 758	Vexcon Certi-Vex Epoxy Grout 100	Kaufman K-Pro, , Five Star DP Epoxy Grout
		Sure Patch, Pro-Poxy 2500	Anti-Hydro Silica Epoxy Topping #140	Metzger/McGuire Armor-Hard	Lambert Corp. Epiweld® 9-N-7
		Pro-Poxy 50-1	TK-Bridge Deck & Crack Sealer 2110	DeNeef Denepox I-40	Five Star Products Rapid Surface Repair R-60
	Top Stop	Top Cast	TK-Concrete Surface Retarder 6000	Vexcon StarSeal Envio Set	
		Top Cast			
		J-6, Super Maxi Tilt	Silcoseal 100/Silcoseal Classic		
		J-6 LVOC	Silcoseal LVOC		
		J-6 WB, Maxi-Tilt E	Silcoseal 2000F/Silcoseal Select		
				Prosoco SLX-100	Ameripolish SR-2
		J-26 WB	(GS) Natural Look	L&M AquaPel	Sillocks Plus Silpro
		Evonik Protectosil BHN	Protectosil Chemtrete BSM 400	Vexcon Certi-Vex Penseal 244 100	
		J-29A	TK-590-100		Pecora KlereSeal® 9100S
	Deck-O-Shield	J-29	L&M AquaPel Plus-Matches our SpecShield WB Extra	ChemMasters Aquanil Plus	Anti-Hydro Airdox 20

**Your Partner in the Concrete
Construction Industry.**

SPECICHEM PRODUCT INDEX

Cleaners, Strippers & Admixtures

Berry Clean	Raspberry scented solvent/cleaner/degreaser	P. 06, 07
C-Set	Calcium chloride accelerating admixture	P. 06
K-Set	Non-corrosive, non-chloride masonry accelerating admixture	P. 06
Orange Peel	Citrus-based solvent & degreaser	P. 06, 57, 64
Sealer ReNew	High-strength deblushing solvent/cleaner	P. 07
Solvent 100	High-strength solvent cleaner	P. 07
SpecBlast	Biodegradable cleaner to remove hardened concrete from forms, tools, etc.	P. 07, 25
Xylene	High-strength solvent cleaner for resin-based compounds	P. 07

Curing Compounds and Cure & Sealers

Crystal Rez	Clear, water-based dissipating resin cure	P. 08
Cure & Seal 25	25% solids solvent-based cure & seal	P. 08, 57
Cure & Seal 25 EX	25% solids, low VOC, solvent-based cure & seal	P. 08
Cure & Seal 25 UV	25% solids solvent-based cure & seal	P. 09
Cure & Seal 25 UV EX	25% solids, low VOC, solvent-based cure & seal	P. 09
Cure & Seal 30	30% solids solvent-based cure & seal	P. 09
Cure & Seal 30 EX	30% solids, low VOC, solvent-based cure & seal	P. 10, 12
Cure & Seal WB	Water-based cure & seal	P. 10, 12, 32
Cure & Seal WB 25	25% solids water-based cure & seal	P. 10
Cure & Seal WB 30	30% solids water-based cure & seal	P. 12, 19
Cure Shield	One step, silane solvent-based cure & seal	P. 10
Cure Shield WB	Water-based cure & seal	p. 11
Cure Shield EX	One step, low VOC Cure & Seal containing silane	P. 11
E-Cure®	Clear concrete curing compound	P. 11, 13, 20, 32, 46, 57
SC Cure 500	Lithium-based concrete curing compound	P. 12
SpecRez	Water-based dissipating resin cure	P. 12

Decorative & Protective Sealers

Aqua Shine	High-solids, water-based, methacrylate sealer	P. 14
Crystal Shine	High-gloss, methacrylate, lacquer sealer	P. 15
Crystal Shine Matte	Matte finish protective exterior sealer	P. 15
Deco Shine	Premium gloss, high durability exterior methacrylate sealer	P. 15, 16
Deco Shine Matte	Matte finish protective exterior methacrylate sealer	P. 15
Surface Grip	Slip-resistant additive	P. 15
Surface Shine	High-gloss acrylic sealer (ASTM C1315 Class A)	P. 17
Surface Shine Brown	Single package, ready-to-use, brown pigmented sealing system	P. 17
Surface Shine Brown EX	25% solids low VOC solvent-based pigmented cure & seal (ASTM C309)	P. 17
Surface Shine Gray	Single package, ready-to-use, gray pigmented sealing system	P. 17

Surface Shine Gray EX	25% solids low VOC solvent-based pigmented cure & seal (ASTM C309)	P. 17
Surface Shine EX	High-gloss, low VOC acrylic sealer (ASTM C1315 Class A)	P. 18
Surface Shine WB	High-solids water-based acrylic sealer (ASTM C1315 Class A)	P. 18

Dry Shake Hardeners & Toppings

Quartz Floor Hardener	Non-metallic, quartz, dry shake floor hardener	P. 19
SpecPlate Floor Topping	Metallic floor topping	P. 19
SpecPlate Hardener	Metallic dry-shake floor hardener	P. 19, 20
SpecPlate NOX	Non-Oxidizing metallic dry-shake floor hardener	P. 19, 20

Evaporation Retarders

IntraFilm	Evaporation retardant & finishing aid	P. 20, 21, 22
IntraFilm Concentrate	Concentrated evaporation retardant & finishing aid	P. 21
SpecFilm Concentrate	Concentrated evaporation retardant & finishing aid	P. 20, 21
SpecFilm RTU	Evaporation retardant & finishing aid	P. 21, 32, 35, 50, 64

Form Release Agents

Bio Strip WB	100% biodegradable water-based form release agent	P. 23, 25
Bio Strip WB Concentrate	100% biodegradable water-based form release concentrate	P. 22
Deco Liquid Release	Root beer scented release agent for decorative stamps	P. 22
Dry-Deck WB	Water-based architectural form release agent (drying-type)	P. 24
EZ Clean & Release	Self cleaning highly-reactive petroleum mix	P. 24
Form Seasoning WB	Water-based aluminum form seasoning treatment	P. 24, 25
Precast 80	Fast-drying premium reactive form release	P. 24
SpecStrip	General purpose reactive form release agent	P. 24, 25, 35
SpecStrip Plus	Low odor premium reactive form release agent	P. 26
SpecStrip Supreme	Clear premium reactive form release agent	P. 26
SpecStrip VOC 100	Low VOC premium reactive form release agent	P. 26
SpecStrip WB	Water-based general purpose reactive form release agent	P. 26
TriAct	Multi-purpose form treatment concentrate	P. 25, 26

Grouts & Anchoring Cements

SC Metallic Grout	High-strength, non-shrink, metallic grout (meets ASTM C1107)	P. 27
SC Multi-Purpose Grout	Non-shrink, non-metallic construction grout (meets ASTM C1107)	P. 12, 27, 28, 32, 57
SC Precision Grout	High flow/high-strength, non-shrink, non-metallic grout (meets ASTM C1107)	P. 27
SC Precision Grout HS	High performance/high-strength grout	P. 28
UW Grout	Underwater cementitious grout	P. 28
Por-Rok	Premium gypsum based anchoring cement	P. 29
Super Por-Rok	Premium cement based anchoring cement	P. 29

SPECICHEM PRODUCT INDEX

Latex Bonding Agents

PlasterBond	Rewettable latex bonding agent	P. 30
SpecPrime	Re-emulsifiable underlayment primer for SpecFlow	P. 30, 51
SpecWeld	Rewettable acrylic bonding agent	P. 30
StuccoBond	Non-rewettable latex bonding agent and admixtures	P. 30
Strong Bond	Acrylic bonding agent and admixture	P. 30

Liquid Hardeners

Cure Hard	Sodium silicate cure & dustproofer	P. 31
LithSeal Lite	Low-solids lithium silicate concrete sealer/densifier	P. 31, 51
LithSeal SC	Lithium silicate concrete sealer/densifier	P. 31, 46
SpecGuard	High-gloss concrete protectant/polish	P. 31
Spec-O-Lith	Water-based, liquid fluorosilicate hardener concentrate	P. 32
SpecHard-Intraseal	Siliconate sealer/densifier	P. 32

Paving Curing Compounds

Pave Cure AMS	High-solids white pigmented poly alpha-methylstyrene curing compound	P. 34
Pave Cure CW	Water-based, clear wax membrane curing compound (DOT)	P. 34
Pave Cure Rez	Water-emulsified, resin-based curing compound (DOT)	P. 34, 50
Pave Cure Rez White	White pigmented, water-emulsified resin-based curing compound (DOT)	P. 35, 50
Pave Cure WW	Water-based, white pigmented wax membrane curing compound (DOT)	P. 36
Pave Cure WW - 300	High-solids, white pigmented, wax-based concrete curing compound	P. 36
SpecCity White	White pigmented, water-based wax curing compound (Non-DOT)	P. 36

Polishable Concrete Toppings

SpecLevel PCT	Self-leveling polishable concrete topping	P. 37, 39
SpecLevel PCT AGG	Self-leveling polishable concrete topping	P. 37, 38, 39
SpecLevel PCT Gray	Self-leveling polishable concrete topping	P. 37, 39

Polyurea Joint Fillers & Repair

Poly Fix®	Ultra-low viscosity polymer concrete repair binder	P. 41, 59
Rapid Flex 90	Rapid-curing, semi-rigid polyurea control joint filler	P. 41, 42, 46
Rapid Flex CJ	Rapid-curing, semi-rigid polyurea control joint filler	P. 41, 42, 53, 59, 64
Spec CJ Guard	Water-based, control joint filler stain protectant	P. 41, 54

Repair Mortars

Aqua Plug	Rapid Setting Cement Based Hydraulic Cement	P. 49
Duo Patch	Two-component, polymer-modified concrete repair mortar	P. 43
Final Finish™	Ultra-fine, rapid-hardening/polymer-modified/concrete resurfacer	P. 43
OverCrete	Polymer-modified concrete repair/resurfacing mortar	P. 43, 63
Pro Plug 45	Rapid Setting Cement Based Hydraulic Cement	P. 49
RepCon® 928 & FS	Rapid-hardening, single-component, fiber-reinforced, structural repair mortar	P. 43, 44, 46
RepCon® H	Single-component, fiber-reinforced, polymer-modified concrete repair mortar	P. 44
RepCon® H-350	Single-component, polymer-modified concrete repair mortar with corrosion inhibitor	P. 44
RepCon® UW Mortar	Fiber-reinforced underwater hand pack repair mortar	P. 44
RepCon® V/O	Single-component, fiber-reinforced, polymer-modified concrete repair mortar	P. 44
SC Foundation Coating	Polymer-modified, cement-based waterproofing coating	P. 46
Sleek 1000 SLU	Premium self-leveling underlayment	P. 51, 52
SpecFlow	Premium self-leveling cement-based underlayment	P. 51, 52
SpecPatch 15 & 30	General purpose concrete repair mortar	P. 47
SpecPatch 5	Fast-setting, general purpose concrete repair mortar	P. 47
SpecPatch Light	Light gray colored, fast-setting concrete repair mortar	P. 47
SpecPlug/Super SpecPlug	Fast-setting hydraulic cement designed to stop active water leaks	P. 47, 48
SpecPrep SB	Structural concrete bonding agent/anti-corrosion reinforcement coating	P. 48, 53
SpecRock	Non-shrink, fast-setting, pourable anchoring cement	P. 48
SpecShot Plus	Fiber-reinforced micro silica shotcrete	P. 49
SpecSmooth	Polymer-modified concrete repair/resurfacing mortar for thin applications	P. 49
Total Patch	Rapid-setting multi-purpose concrete repair mortar	P. 49

Self-Leveling Underlayments

Sleek 1000 SLU	Premium self-leveling underlayment	P. 51, 52
SpecFlow	Premium self-leveling underlayment	P. 51, 52
SpecPrime	Re-emulsifiable underlayment primer for Specflow	P. 30, 51
MVM Prime 5000	Alkali-resistant, epoxy moisture control barrier / primer	P. 51

Specialty Epoxies

Spec CJ Guard	Water-based blind of film-forming polymers	P. 41, 54
SpecPoxy 500	ASTM C881 compliant hi-mod, ultra-low viscosity epoxy bonding adhesive	P. 53, 54
SpecPoxy 1000	ASTM C881 compliant hi-mod, low viscosity epoxy	P. 53, 56
SpecPoxy 2000	ASTM C881 compliant hi-mod, medium viscosity epoxy	P. 53, 56
SpecPoxy 2000 LPL	ASTM C881 compliant hi-mod, LPL, medium viscosity epoxy	P. 56
SpecPoxy 3000	ASTM C881 compliant hi-mod, gel viscosity epoxy	P. 28, 53, 55, 56
SpecPoxy 3000 FS	Fast-setting ASTM C881 compliant hi-mod, gel viscosity epoxy	P. 53, 56

SPECICHEM PRODUCT INDEX

SpecPoxy Binder	ASTM C881 compliant low-mod, epoxy binder/adhesive	P. 53, 56, 58, 59
SpecPoxy CJ	100% solids, semi-rigid epoxy control joint filler	P. 53, 58, 64
SpecPoxy Coating	100% solids, high-build epoxy coating	P. 53, 58
SpecPoxy Grout/HS	High-strength epoxy grout	P. 53, 59
SpecPoxy Mortar	Three-component, 100% solids, multi-purpose, epoxy mortar	P. 59
SpecPoxy Sealer	70% solids penetrating epoxy sealer	P. 53, 59

Surface Retarders

SpecEtch	Horizontal surface retarder	P. 61
SpecEtch Deep	Horizontal deep surface retarder	P. 61
Versa Etch	Architectural Concrete Surface Retarder	P. 61
Versa Etch Extender	Architectural Concrete Surface Retarder	P. 61

Tilt-Up Bond Breakers

CleanLift 20/20	Premium reactive water-based tilt-up cure/bond breaker	P. 56
SpecTilt 100	Premium reactive solvent-based tilt-up bond breaker	P. 56
SpecTilt EX	Quick-drying, low VOC solvent-based bond breaker	P. 57
SpecTilt WB	Premium reactive water-based bond breaker	P. 63, 64

Water Repellents

All Shield EX	Modified Oleophobic Penetrating Concrete Protectant	P. 14, 65
All Shield WB	Modified silane-siloxane concrete protectant	P. 14, 65
SpecShield SB	Silane-Siloxane solvent-based penetrating water repellent	P. 65
SpecShield WB	Silane-Siloxane water-based penetrating sealer	P. 66
SpecSilane 20 WB	20% solids, water-based deep penetrating sealer	P. 66
SpecSilane 40	40% solids VOC compliant penetrating silane sealer	P. 66
SpecSilane 40 WB	40% solids, water-based deep penetrating sealer	P. 66
SpecSilane 100	100% solids, deep penetrating silane sealer	P. 66

Waterproofing & Damp Proofing

Max-A-Patch ACP	High-quality, pre-mixed, all-weather, permanent asphalt cold patch	P. 67, 68
Max-A-Seal DP	Non-fibered emulsion coating (meets ASTM D1127)	P. 67, 68
Max-A-Seal WP	Anionic emulsion, latex modified emulsion	P. 67, 68
Max-A-Seal Asphalt Paint	Quick drying, high gloss, bituminous, corrosion resistant asphalt paint	P. 67, 68
Max-A-Tack TTC	Anionic trackless tack coat emulsion, used primarily as a tack coat	P. 67, 68

WELCOME TO THE *Gold* STANDARD

The Highest Quality Concrete Chemicals

SPEC[®]CHEM
Solution to Service



**We provide the most technologically innovative products
in the concrete building materials market.**

Nothing in the industry provides quality, performance and value like our full line of liquid chemical technologies, our wide range of epoxy products, and our comprehensive line of cementitious grouts, repair mortars, underlayments and overlayments, and asphalt patching and repair, waterproofing, and damp proofing products.

www.specchem.com | 816.968.5600

CORE VALUES

Company **LEAD THE INDUSTRY**

Trust Leadership
Respect Quality

Team **DEVELOP TALENT**

Fun Honesty
Passion Accountability
Community Commitment

Customer **CUSTOMER FOR LIFE**

Commitment Loyalty
Profitability Best in Class



SpecGuide
Version 7.0

SPEC-CHEM 
Solution to Service
1511 Baltimore Ave., Suite 600
Kansas City, MO 64108
P. 816-968-5600
F. 816-561-4029
www.specchem.com