

MERRIMACK COMMERCE CENTER

FLEX SPACE FOR LEASE

4,850 SF - 19,400 SF



683 Daniel Webster Highway, Merrimack, NH

Located immediately off of Exit 12 in Merrimack, NH, the John Flatley Company is developing a 150-acre mixed-use development site, now offering a brand new, class A flex building for lease, with office space up front and warehouse space in the back. In addition to the site featuring a new 336-unit Gilbert Crossing apartment complex, it offers nearby retail amenities on DW Highway, and sits only two miles from the Manchester-Boston Regional Airport and Bedford/Manchester amenities.

Unit Breakdown:

Building A:	SF:
Suite 105	4,850 SF*
Suite 106	4,850 SF*
Suite 107	4,850 SF*
Suite 108	4,850 SF*

**Contiguous up to 19,400 SF*

Property Details:

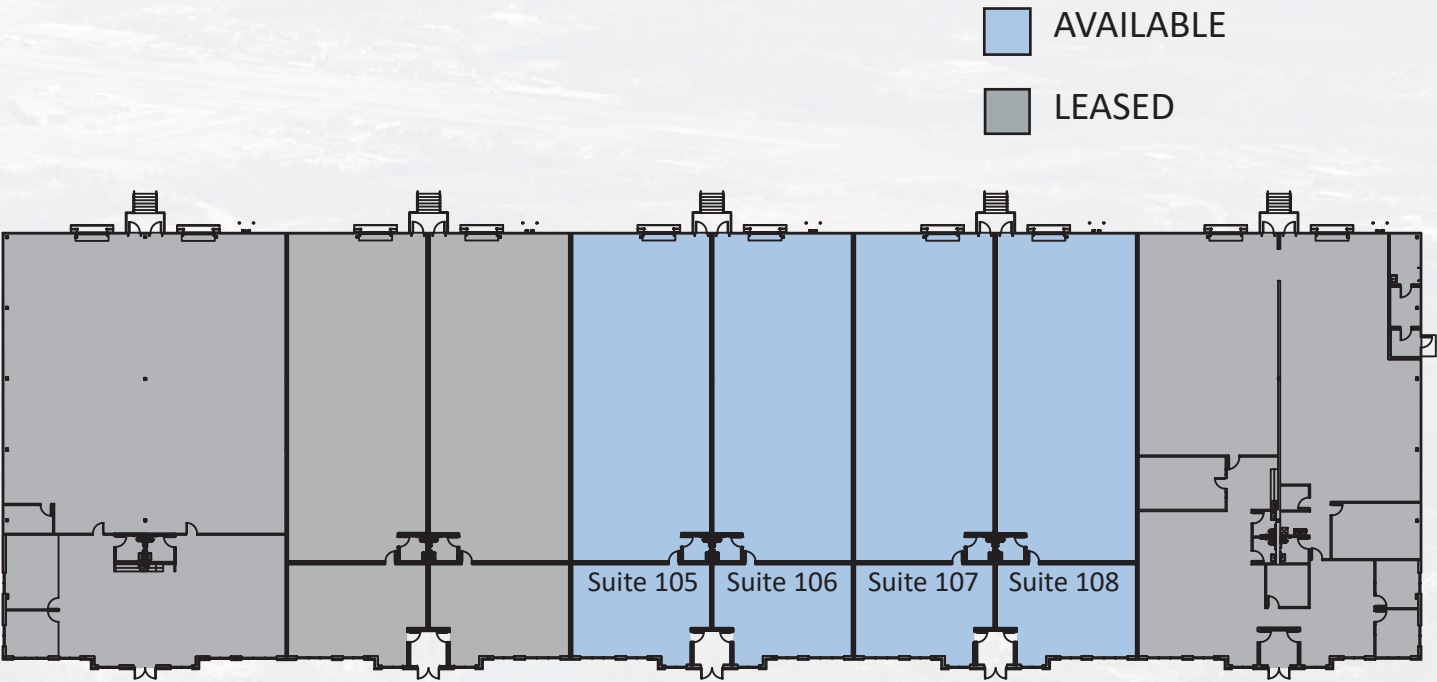
- Units range from 4,350 SF to 4,850 SF, which can be combined to 48,000 SF
- Units developed with finished open office space, a restroom, warehouse space, and loading dock
- Individually metered for electrical & gas
- Ceiling height: 20'
- Insulated metal pedals with store fronts
- Fully adhered rubber membrane roof
- 200 amp 3 phase
- 5" concrete slab in warehouse
- 4" concrete slab in office

SEE WHAT IS IN THE AREA:

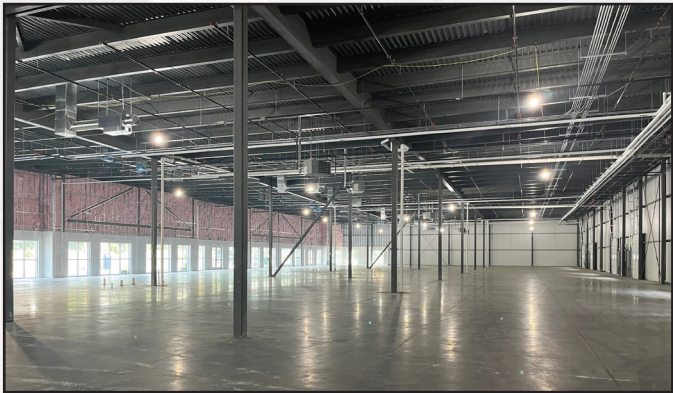
- Gilbert Crossing Apartments
- Manchester-Boston Regional Airport
- Whole Foods, Target, Dunkin' Donuts
- Thirsty Moose Taphouse
- Budweiser Brewery Experience
- Holiday Inn, Homewood Suites
- 20 minutes from Gateway Hills, Nashua
- The Homestead Restaurant & Tavern



Floor Plans:



BUILDING A



LOWE'S

PRESSED
CAFE

**WHOLE
FOODS
MARKET**



**MARKET
BASKET**
"MORE FOR YOUR DOLLAR"

**THE MALL OF
NEW HAMPSHIRE**
A SIMON MALL

**HOMWOOD
SUITES**
Hilton

Manchester-Boston
REGIONAL AIRPORT



Exit 13

F.E. Everett Turnpike

Daniel Webster Highway

FUTURE DEVELOPMENT SITE



DUNKIN'
Walgreens



the common man

**MERRIMACK
PREMIUM OUTLETS**
A SIMON CENTER



Gilbert
CROSSING
APARTMENTS

JOHNFLATLEY
Company

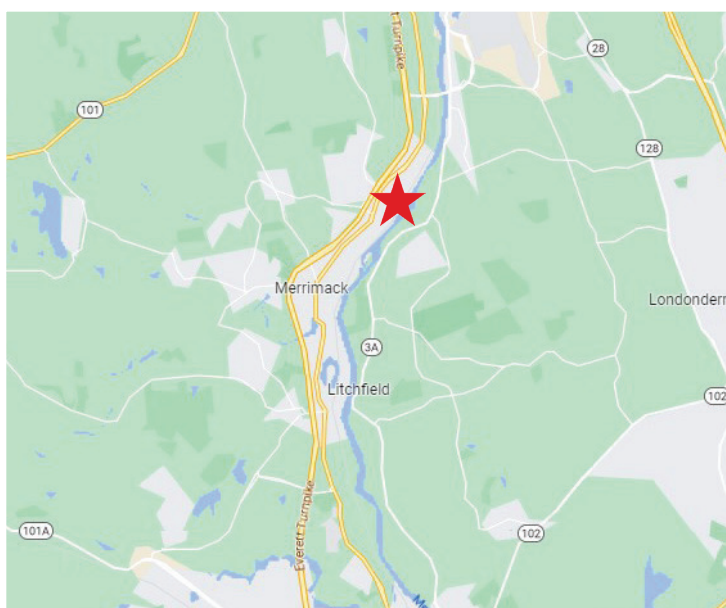
**For more information,
or to schedule a tour, please contact:**

Tom Maregni

Direct 781.917.5306

Office 781.380.7731

thomas.maregni@johnflatleyco.com



Corporate Headquarters | 45 Dan Rd, Suite 320, Canton, MA 02021 | 781.380.7731
www.johnflatleyco.com | info@johnflatleyco.com