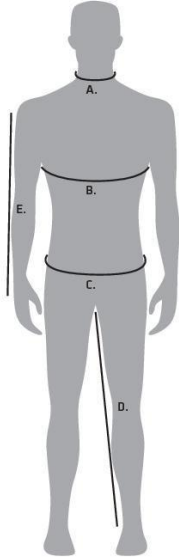


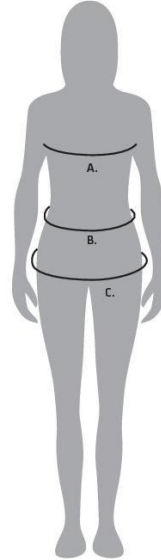
BODY AND GARMENT SIZE GUIDES

Benchmark Fitting Guide for Men



- A. NECK**
The measurement is taken around the neck, at the collar level.
- B. CHEST**
The measurement is taken around the fullest part of the upper chest, keeping the tape under the arms and around the shoulder blades.
- C. WAIST**
The measurement is taken around the waist, keeping one finger between the tape and the body, for a comfortable fit.
- D. INSEAM**
Measure from the top of the inner pant leg seam (the crotch) to the opening at the bottom of the pant leg.
- E. SLEEVE**
Measure the length from the top stitching on the shoulder to the bottom of the wrist. Be careful not to measure too high above the wrist.

Benchmark Fitting Guide for Women



- A. BUST**
The measurement is taken around the fullest part of the bust, keeping the tape under the arms and around the shoulder blades.
- B. WAIST**
The measurement is taken around the waist, keeping one finger between the tape and the body, for a comfortable fit.
- C. HIPS**
The measurement is taken around the fullest part of the hips, while standing naturally (approximately 22 cm down from the waist).

MENS JACKETS

SIZE	TO FIT CHEST	SLEEVE
92/XS	87cm	64.5cm
97/S	92cm	65.5cm
102/M	97cm	66.5cm
107/L	102cm	67.5cm
112/XL	107cm	68.5cm
117/2XL	112cm	69cm
122/3XL	117cm	69.5cm
127/4XL	122cm	70cm

MENS SHIRTS

SIZE	COLLAR	TO FIT CHEST	LONG SLEEVE	SHORT SLEEVE
38/S	38cm	86/88cm	62cm	25cm
39/M	39cm	90/92cm	62.5cm	25cm
40/M	40cm	94/96cm	63cm	25cm
41/L	41cm	98/100cm	63.5cm	26cm
42/L	42cm	102/104cm	64cm	26cm
43/XL	43cm	106/108cm	64.5cm	26cm
44/XL	44cm	110/112cm	65cm	27cm
46/2XL	46cm	118/120cm	66cm	27cm
48/3XL-4XL	48cm	126/128cm	67cm	28cm
50/5XL	50cm	134/136cm	68cm	28cm

MENS PANTS

SIZE	TO FIT WAIST	INLEG LENGTH
77	77/30	84
82	82/32	84
87	87/34	84
92	92/36	84
97	97/38	84
102	102/40	84
107	107/42	84
112	112/44	84
117	117/46	84

M7630 SIZE CONVERSION

SIZE	TO FIT LADIES SIZE
XS	12
S	14
M	16
L	18
XL	20
2XL	22
3XL	24
4XL	26
5XL	28

M9370 SIZE CONVERSION

SIZE	TO FIT LADIES SIZE
XS/77/30	12
S/82/32	14
M/87/34	16
L/92/36	18
XL/97/38	20
2XL/102/40	22
3XL/107/42	24
4XL/112/44	26
5XL/117/46	28

LADIES TOPS

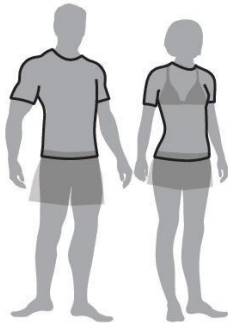
SIZE	TO FIT CHEST	TO FIT WAIST
6	77/80	66/68
8/XS	82/85	71/73
10/S	87/90	76/78
12/M	92/95	81/83
14/L	97/100	86/88
16/XL	102/105	91/93
18/XL	107/110	96/98
20/2XL	112/115	101/103
22/3XL	117/120	106/108
24/3XL	122/125	111/113
26	127/130	116/118
28	132/135	121/123
30	137/140	126/128

LADIES BOTTOMS

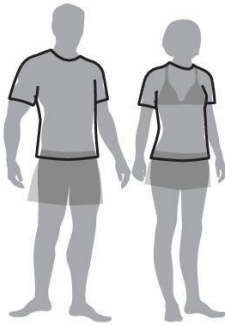
SIZE	TO FIT WAIST	TO FIT HIP
6	66/68	86/89
8	71/73	91/94
10	76/78	96/99
12	81/83	101/104
14	86/88	106/109
16	91/93	111/114
18	96/98	116/119
20	101/103	121/124
22	106/108	126/129
24	111/113	131/134
26	116/118	136/139

FIND YOUR BEST SIZE FIT

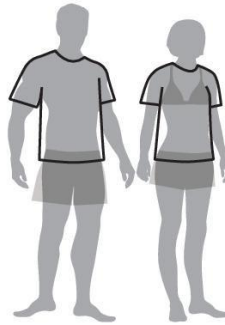
Finding a fit that suits your body is very important. It not only helps in comfort but also makes you look great. Use below chart to choose the correct fit that suits your style or flatter your body shape.



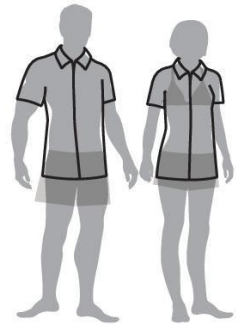
SLIM FIT
This Fit is shaped to the body. To get a semi-fitted look you may buy one size up



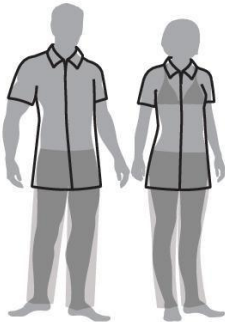
MODERN FIT
This Fit follows the shape of the body and provides ease for movement



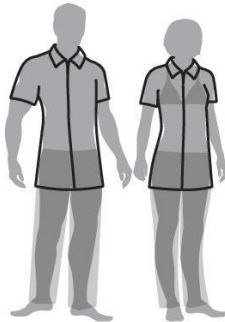
EASY FIT
This is a Fit with extra ease for movement. The garment falls free from the body



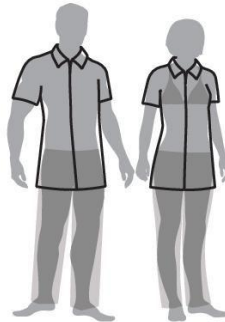
CLASSIC FIT
Follows the shape of body and provides ease for movement, shirt can be tucked into pants or wear out



TAILORED FIT
Follows the shape of body and provides ease for movement, extra length provided to cover the back when bend down. The garment falls free from the body



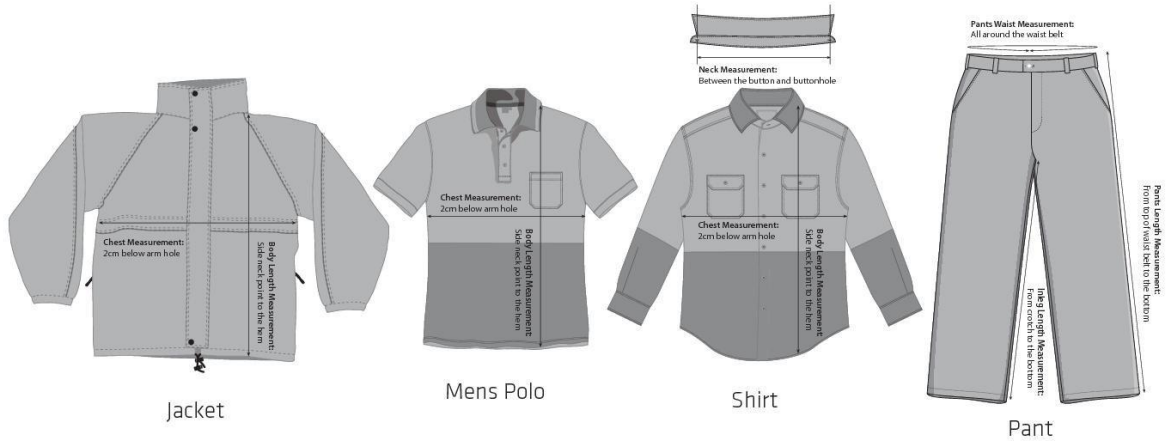
MID-TAILORED FIT
Slightly slimmer than the Tailored-Fit, creating a more tapered shape over the body.



REGULAR FIT
Follows the shape of body and provides ease for movement, extra length provided to cover the back when bend down. The garment falls free from the body



SEMI-FITTED
Garment is gently shaped following the body contour. Compatible with most body shapes.



Please note: Our factories use the most modern and sophisticated machinery to ensure a perfect make and look for all our garments each time. Whilst all effort is made to achieve the exact standards for all our garments each time but it's because of the human content in the manufacturing process that sometime a garment may have a slight sizing variability. We are confident in bringing this range to you and know that the high quality of our products will continue to impress. Specification measurements in this catalogue relate to the garment dimensions and not body measurements.