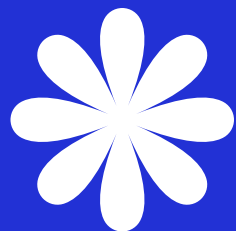


*5 hours of  
Professional  
Development*

The Greater Boston Early Educators Network in collaboration with  
Roxbury Community College  
will host

# Babies & Toddlers Conference



*"Nurturing Beginnings, Creating Powerful Futures"*

Roxbury Community College  
1234 Columbus Ave  
Roxbury, MA

1  
November

INFO & REGISTRATION  
617-522-0881

*5 hours of  
Professional  
Development*

# Conference Schedule

Workshops  
in  
English &  
Spanish

8:30-9:00 am Registration, Exhibits & Light Breakfast

9:00-10:00 am Keynote Presentation by Ant Toombs

10:15-12:15 pm Morning Workshops

12:15-1:15 pm Lunch & Exhibits

1:30-3:30 pm Afternoon Workshops

3:30-4:00 pm (Optional) Sharing reflections and next steps  
*A light breakfast and lunch will be provided.*

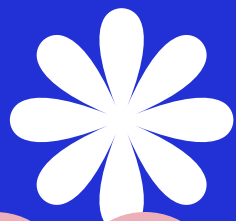




## Registration & Fees



- **Early Bird Rate: until October 10th -\$65 each**
- **Regular Rate: October 11-October 30th -\$75 each**
- **Groups of 4 or more from one center or a group of 4 or more FCC providers-\$65 each**
- **Some partial scholarships available please contact Katy Gobeil-[gbeenetwork@gmail.com](mailto:gbeenetwork@gmail.com)**



*5 hours of  
Professional  
Development*





# **Keynote Speaker** **Anthony (Ant) Toombs Sr.** **"The Power of a Playful Mindset"**

In the earliest years of life, every moment matters and so does every adult. This uplifting keynote invites early childhood educators, infant and toddler professionals, and leaders to rediscover the transformative power of optimism and play. When adults approach their work with joy, curiosity, and emotional presence, they create environments where children feel safe, connected, and ready to thrive. Through powerful stories, humor, and insights from over 30 years of fieldwork, Playmaker Project Guides illuminate how a playful mindset isn't just good for kids, it's essential for the grownups who care for them. Participants will leave recharged, reconnected to their purpose, and equipped with practical tools to build healing-centered spaces where children and the adults who support them can heal, learn, and thrive.







# About the Keynote Speaker Anthony (Ant) Toombs Sr.

Anthony (Ant) Toombs Sr. is a Founding Member, Growth & Expansion Strategist with The Life is Good Playmaker Project, a nonprofit organization with a mission to spread the power of optimism to help kids heal through play.

Throughout his 17+ years with The Playmaker Project Ant has partnered with thousands of childhood professionals across the United States and Haiti to help create more safe, loving and joyful environments for kids to engage, connect, and explore.

Ant (along with the entire Playmaker team) believes that when children grow to see the good in themselves, the good in others and the good in their world - their social, emotional, and cognitive superpowers emerge. However, for the seeds of optimism to take root, they must be nurtured. Sadly, in toxically stressful environments that can result from poverty, violence and illness, the seeds of optimism often die. Ant is an inspirational and passionate speaker whose lessons help his audience access their own playfulness, energy and creativity to reach their full potential.

Ant has committed his career to growing the good and supporting the childhood professionals, that The LiGPP call Playmakers – those men and women who dedicate their lives to helping kids heal through play.





# Morning Workshops 10:15-12:15

## ***A-1. Let's have fun reading to babies – The fundamentals of pre-literacy for infants and toddlers! -Rosemary Montero Hernandez***

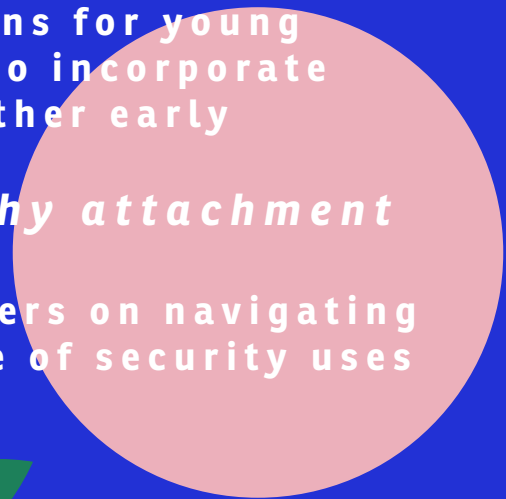
Early language and pre-literacy skills are learned best through everyday moments with young children through reading books, talking, laughing and playing together. Children learn language when you talk to them and they communicate back to you. By hearing stories, reading and singing songs to the young learner. In this workshop, we will explore the fundamental pillars of early literacy to set children for success in reading!

## ***A-2. Teaching Emotional Intelligence: The Power of Feelings in Early Childhood Education.-Becca Leibowitz Taber***

Can infants and toddlers really be taught "emotional intelligence"? (Spoiler alert: Yes!) In this workshop, participants will learn what "emotional intelligence" means for young children, explore why it matters so much, and identify a myriad of ways to incorporate social-emotional learning into the daily routines of their classroom or other early childhood setting.

## ***A-3. Introduction to Circle of Security! The importance of healthy attachment between caregiver and child. -Janilia John***

I will provide a introduction about circle of security and educate caregivers on navigating challenging behaviors with their children or children in their care. Circle of security uses the attachment theory to supports relational health.





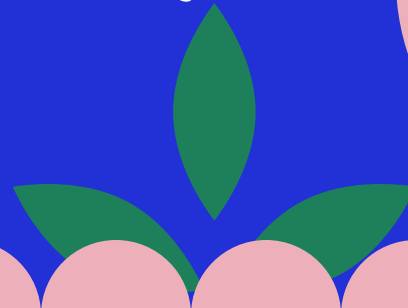
# Morning Workshops 10:15-12:15



***A-4. Authentically Partnering with Families of Infants & Toddlers.-Margaret Olem***  
Using the Pyramid Model (a framework of evidence-based practices for supporting healthy social and emotional development in young children) as our guide, this session will explore how family engagement and connection can look at each tier of the model - promotion, prevention, and intervention. Participants will share and reflect upon current family engagement strategies and leave with concrete ideas for some robust efforts toward true partnership with the families of children in their care.

***A-5. Piecitos pequeños, Caminos grandes: Cuidado Informado por el Trauma para la Primera Infancia en Contextos de Desplazamiento y Migración.-Priscilla Rodriguez***

Este taller explora cómo el trauma, la migración y el desplazamiento impactan a los bebés y niños pequeños, especialmente en contextos de inmigración y cuidado temporal (foster care). Los participantes aprenderán cómo el estrés temprano se manifiesta en el comportamiento, cómo apoyar la autorregulación compartida (co-regulación), y cómo crear entornos seguros y culturalmente sensibles que promuevan la sanación, la confianza y la conexión para nuestros niños más pequeños y los cuidadores que los sostienen.

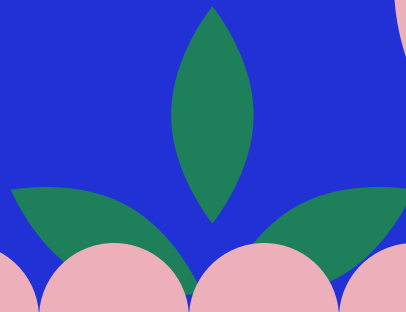
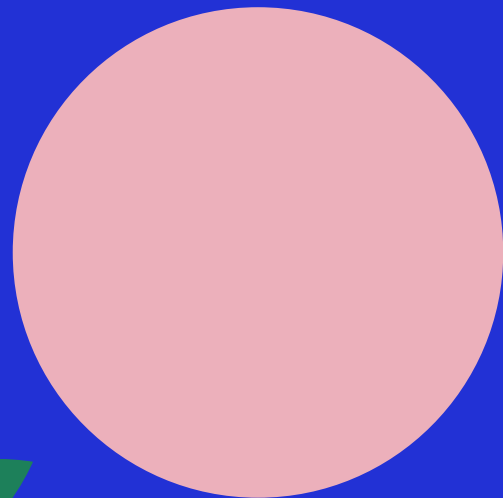




# Morning Workshops 10:15-12:15

*A-6. Anti-bias 101 The top ten principles to get you thinking differently. - Victor Bradley*

In this session, I will offer tools to address specific circumstances as they relate to the topics of gender, racism, classism, and activism. I will teach you how to effectively use the resources offered to proactively and positively engage in developmentally appropriate initiatives. Everyone will have an opportunity to ask questions and learn strategies to do this vital anti-bias/anti-racist work. I will provide support and resources for navigating challenging conversations with young people, parents, and faculty.





# Afternoon Workshops 1:30-3:30



## ***P-1. STEAM Adventures for Infants and Toddlers. -Rita Rzezuski***

Discover how to nurture curiosity and early learning through age-appropriate Science, Technology, Engineering, Arts, and Math experiences. This interactive workshop introduces simple, engaging STEAM activities specifically designed for infants and toddlers at various developmental stages.

Join us to explore hands-on sensory experiences, cause-and-effect discoveries, and creative explorations that build the foundation for future learning. You'll leave with practical, easy-to-implement ideas that support brain development while making everyday moments more meaningful and fun.

## ***P-2. Put on your oxygen mask first: Navigating the emotions of infants and toddlers.-Steffi Wright***

Participants will build their understanding of social emotional development in children birth to 3, with emphasis on how to support their own emotions as they help children navigate theirs. An interactive experience that will include some mindful movement and other self-regulation techniques.







# Afternoon Workshops 1:30-3:30

## ***P-3. Move and Groove with Babies and Toddlers to Promote Growth, Joy and Skill Development.-Anna Adler***

Music, singing and movement are essential tools for early childhood classrooms and the growth and development of infants and toddlers. In this workshop, participants will deepen their understanding for the many uses of music and movement. We will discuss how music strengthens young children's brain development, social connections, small and gross motor skills, and promotes early literacy skills. We will review familiar songs and learn new ones that delight babies and toddlers including finger plays, songs with movement, active songs, lullabies, and chants. We will connect with the joy of music to bring this energy into our work.

## ***P-4. Infants and Toddlers hands on training in Science and Technology, Reading, Art, and finally Math.-Katey Grossman***

Dive into a hands-on workshop that will ignite your Curiosity and spark innovative thinking. You will explore strategies for supporting scientific thinking. You will leave with new knowledge, practical skills and ideas for enhancing your curriculum and network and finally have Fun!





# Afternoon Workshops 1:30-3:30

## *P-5. Construyendo un aula comunitaria: cultivando la conexión, la colaboración y el cuidado.-Maridel Perdomo*

Descubre cómo crear un entorno propicio para la primera infancia que entusiasme a los niños, acoja a las familias e inspire a los educadores a cultivar el amor por el aprendizaje y un sentido de pertenencia para todos.

Este taller interactivo ofrece estrategias prácticas para fortalecer las relaciones entre niños, educadores y cuidadores. Saldremos con la motivación y la energía necesarias para construir una comunidad única, en la que todos los miembros participen activamente.

Exploramos ideas inspiradoras para crear un entorno enriquecedor donde cada niño, educador y cuidador sienta conexión y pertenencia. También aprenderemos herramientas para establecer relaciones significativas, diseñar espacios de aprendizaje inclusivos y generar una cultura que refuerce el sentido de comunidad.



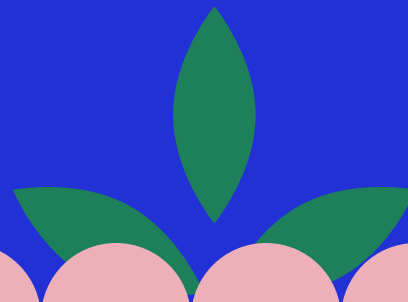


# Afternoon Workshops 1:30-3:30

## *P-6. Babies R Us: Social-Emotional Development for Young Children.-Rosemary Montero Hernandez*

Social-emotional development lays the foundation for lifelong learning, healthy relationships, and emotional well-being. In the earliest years of life, children begin to form secure attachments, express emotions, develop trust, and learn how to navigate the world around them. Early childhood educators play a vital role in helping infants and toddlers feel safe, seen, and supported as they build the emotional and social skills they will carry into later childhood.

In this interactive workshop, participants will explore the stages of social-emotional development in young children, understand the role of responsive care giving, and gain practical strategies for supporting emotional expression, regulation, and connection in everyday routines and interactions.





# Conference Registration information

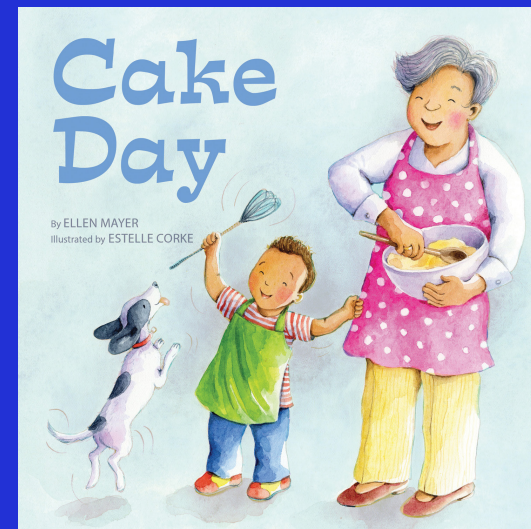
For questions please contact [gbeenetwork@gmail.com](mailto:gbeenetwork@gmail.com) or 617-522-0881.

Click on the link below to register or scan the QR code.

<https://lp.constantcontactpages.com/ev/reg/ezrtzba/lp/0b4b659e-eff8-49a7-9c84-c26c3fde1918>



Children's book  
author Ellen  
Mayer will be in  
attendance  
signing and  
selling her  
books!





# General Conference information

Directions to Roxbury Community College

1234 Columbus Ave, Roxbury, MA

## Trains

From Downtown Boston take Orange Line toward Forest Hills. Get off at the Roxbury Crossing station. The College is located across the street on Columbus Avenue.

## Buses - Columbus Avenue

22 - Ashmont Station - Ruggles Station via Jackson Square (schedule)

29 - Mattapan Station - Ruggles Station via Jackson Square (schedule)

66 - Harvard Station - Dudley Station via Allston & Brookline Village (schedule)

Buses - Malcom X. Boulevard (Reggie Lewis Center stop - the College is located across the street on Columbus Avenue)

23 - Ashmont Station - Ruggles Station via Dudley Square (schedule)

28 - Mattapan Station - Ruggles Station via Dudley Square (schedule)

## Parking

Parking is FREE! Visitors can park in spaces in Lot #1 or Lot #2 that are not designated as employee parking.

---

GBEEN provides a forum through which individuals can gather and discuss issues vital to those who work on behalf of children and families. Although GBEEN encourages the exchange of diverse opinions, the ideas presented do not necessarily reflect GBEEN's official position. GBEEN assumes no responsibility for any statement of fact or opinion presented at this conference, nor does the acceptance of advertising or exhibits imply endorsements of any products or services by GBEEN.

Photographs will be taken during the conference and may appear on the GBEEN website/social media.

