



Finedoor UK LLP, Hunslet Works, Pepper Road, Leeds, LS10 2RU
Telephone: +44 (0) 113 252 7601
Fax: +44 (0) 113 252 7603

E-mail: info@finedoor.co
Web: finedooruk.co

Adhesives	*
Steel Backed Elements and Tiles	*
Rubber Screen Media	*
Polyurethane Screen Media	*
Spray Bar Systems and Accessories	*
Dust Encapsulation	*
Conveyor Accessories	*
Wash Barrel Linings and Trommels	*
Mill Linings	*



Finedoor UK LLP, Hunslet Works, Pepper Road, Leeds, LS10 2RU
 Telephone: +44 (0) 113 252 7601 E-mail: info@finedoor.co
 Fax: +44 (0) 113 252 7603 Web: finedooruk.co

A
B
R
A
S
I
O
N

R
E
S
I
S
T
A
N
T

R
U
B
B
E
R

S
H
E
E
T



Finedoor UK LLP, Hunslet Works, Pepper Road, Leeds, LS10 2RU

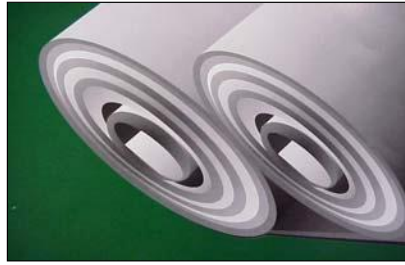
Telephone: +44 (0) 113 252 7601

E-mail: info@finedoor.co

Fax: +44 (0) 113 252 7603

Web: finedooruk.co

Abrasion Resistant Rubber Sheet



Product	Hardness	Colour	Din	Application
Perfect 35	35	Red	60	Slurry handling and wet abrasion. Very high abrasion resistance. Cyclone and chute linings. Available plain or with bonding layer.
Perfect 40	40	Yellow	80	Good abrasion resistance. Used for general lining work. Chute and Hopper Lining. Sand and Gravel and Coal Preparation. Available plain or with bonding layer.
Perfect 60	60	Black	75	Highly abrasion and impact resistant. Used in Barrel linings, truck bodies and impact areas. Available plain or with bonding layer.
Perfect 60 Alu	60	Black	75	High abrasion resistant rubber with a 0.8mm thick hot vulcanised aluminium backing for mechanical fixing and extra strength.
Perfect 65 1 ply	65	Black	75	High abrasion resistant rubber with a fabric backing hot vulcanised to one face for extra strength.

Other Abrasion Resistant Rubber Sheets available to suit
varying applications please enquire.



Finedoor UK LLP, Hunslet Works, Pepper Road, Leeds, LS10 2RU

Telephone: +44 (0) 113 252 7601

E-mail: info@finedoor.co

Fax: +44 (0) 113 252 7603

Web: finedooruk.co

Abrasion Resistant Rubber Data

Rubber Type	Compound	SG	Hardness Shore A +/- 5	Tensile strength N/cm2	Elongation at Break %	Abrasion mm3 /5N Din 53516	Colour	Thickness	Widths
Perfect 35	Natural	0.96	35	180	750	60	Red	3,4,5,6,8,10,12,15,20, 25,30	1500
Perfect 35 Bonding layer	Natural	0.96	35	180	750	60	Red	6,8,10,12,15,20	1500
Perfect 40	Natural	0.96	40	200	700	80	Yellow	3,4,5,6,8,10,12,15,20,25,30	1500
Perfect 40 Bonding layer	Natural	0.96	40	200	700	80	Yellow	6,8,10,12,15,20,25,30	1500
Criblex 45	Natural	1.1	45	120	500	120	Red	3,4,5,6,8,10,12,15,20,25,30	1500
Criblex 45 Bonding layer	Natural	1.1	45	120	500	120	Red	6,8,10,12,15,20,25,30	1500
Criblex 50	Natural	1.2	50	60	350	120	Black	6,8,10,12,15,20,25,30	1500
Perfect 50	Natural	1.2	50	200	500	80	Blue	6,8,10,12,15,20	1500
Criblex 60	Natural	1.15	60	140	450	90	Black	3,4,5,6,8,10,12,15,20, 25,30,40, 50,60,70,80,90, 100	1500
Perfect 60 Bonding layer	Natural	1.13	60	160	450	75	Black	6,8,10,12,15,20,25,30	1500
Perfect 60 SV	Natural	1.15	60	180	450	55	Black	6,8,10,12,15,20,25,30	1500
Perfect 60 SV Bonding layer	Natural	1.15	60	180	450	55	Black	6,8,10,12,15,20,25,30	1500
Criblex 80	Natural	1.2	82	170	400	100	Black	8,10,15,20,25,30,35, 40,50	1500
Perfect Food Grade	Nitrile	1.13	60	160	675	140	White	6,8,10,12,15,20	1500
Perfect Fire Retardant	SBR	1.14	63	180	400	85	Black	6,8,10,12,15,20	1500
Perfect Oil Resistant	Nitrile	1.18	70	160	600	120	Black	6,8,10,12,15,20	1500
Perfect 80/60	1/3 Criblex 80 2/3 Perfect 60							10,15,20,25,30,35,40, 50	1500
Perfect Sandwich	Outside Perfect 60 Inside Criblex 45							15,20,25,30	1500
Perfect Diamond Bonding layer	Natural	1.13	60	160	450	75	Black	8,10,12,15	1500
Perfect Alu	Natural	1.15	60	160	450	75	Black	10,15,20,25,30	1250
Perfect 65 1 ply	Natural	1.13	65	160	450	75	Black	6,8,10,12,15,20,25,30	1500

Finedoor UK LLP, Hunslet Works, Pepper Road, Leeds, LS10 2RU

Telephone: +44 (0) 113 252 7601

Fax: +44 (0) 113 252 7603

E-mail: info@finedoor.co

Web: finedooruk.co

A
D
H
E
S
I
V
E
S



Finedoor UK LLP, Hunslet Works, Pepper Road, Leeds, LS10 2RU

Telephone: +44 (0) 113 252 7601

E-mail: info@finedoor.co

Fax: +44 (0) 113 252 7603

Web: finedooruk.co

Adhesives and Primer



Cold Vulcanising adhesive systems for rubber to rubber and rubber to metal bonding.

Can be used with rubber sheets with bonding layer, buffed surface or fabric finish.

TRS 2002 N - Black - non flammable

TRS 2002 N tin	1 KG	Hardener TRS 2002 M - bottle	40 Gr
TRS 2002 N can	5 KG	Hardener TRS 2002 M - tin	275 Gr

TRS 4004 N - Black - Chlorinated solvent free

TRS 4004 N tin	1 KG	Hardener TRS 4004 M - bottle	40 Gr
TRS 4004 N can	5 KG	Hardener TRS 4004 M - tin	275 Gr

TRS Metal Primer

Metal primer tin	750 Gr
------------------	--------



Finedoor UK LLP, Hunslet Works, Pepper Road, Leeds, LS10 2RU

Telephone: +44 (0) 113 252 7601

E-mail: info@finedoor.co

Fax: +44 (0) 113 252 7603

Web: finedooruk.co

S
T
E
E
L

B
A
C
K
E
D

E
L
E
M
E
N
T
S

A
N
D

T
I
L
E
S



Finedoor UK LLP, Hunslet Works, Pepper Road, Leeds, LS10 2RU

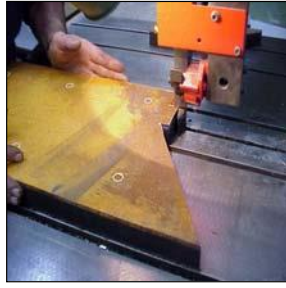
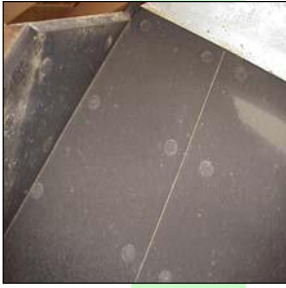
Telephone: +44 (0) 113 252 7601

E-mail: info@finedoor.co

Fax: +44 (0) 113 252 7603

Web: finedooruk.co

Steel Backed Elements



Steel backed rubber lining elements incorporate a highly abrasion resistant Perfect 60 compound moulded onto a mild steel backing plate. Ideal for a wide range of lining applications from sand and gravel chutes to dump truck liners. The DIN abrasion figure of 75 makes it one of the most abrasion resistant products on the market.

Plates can be drilled and counterbored for bolt fixing, where access to the rear of the chute or hopper is not possible fixing by stud welding is recommended.

A full cutting and drilling service is available fax drawing for quotation.

Thickness (rubber+steel)	Plate size	
10+3	1500 x 3000	
12+3	1500 x 3000	
15+3	1500 x 3000 or 1000 x 2000	
20+3	1500 x 3000 or 1000 x 2000	
25+3	1500 x 3000 or 1000 x 2000	
25+5	1500 x 3000 or 1000 x 2000	
30+5	1500 x 3000 or 1000 x 2000	
35+5	1500 x 3000 or 1000 x 2000	
45+5	1500 x 3000 or 1000 x 2000	
50+5	1500 x 3000 or 1000 x 2000	
75+5	1000 x 2000	
95+5	1000 x 2000	
125+5	1000 x 2000	
155+5	1000 x 2000	



Finedoor UK LLP, Hunslet Works, Pepper Road, Leeds, LS10 2RU

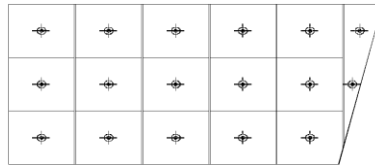
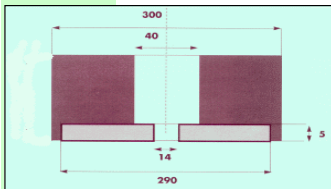
Telephone: +44 (0) 113 252 7601

E-mail: info@finedoor.co

Fax: +44 (0) 113 252 7603

Web: finedooruk.co

Tiles



The problem of stockholding different steel backed liner plates for different chutes and hopper configurations can be greatly reduced by using steel backed tiles. The 300mm square tiles with one recessed hole to suit 12mm dia bolts can be stocked and easily used in a wide range of applications.

Localised wear can be replaced easily and handling problems are eliminated as even the thickest tile (100mm) only weighs 13.5 kg.

The tiles are hot vulcanised from 60 shore hardness compound with a very high DIN abrasion resistance of 80.

Tiles all incorporate a 5mm steel backing and can be cut on a bandsaw or with an angle grinder and knife. This enables plates to be fitted into chute and hopper angles.

Alternatively we can supply pre cut and drilled steel backed elements to fit more complex shapes.

Thicknesses: 25, 30, 35, 40, 50, 60, 80, 100mm



Finedoor UK LLP, Hunslet Works, Pepper Road, Leeds, LS10 2RU

Telephone: +44 (0) 113 252 7601

E-mail: info@finedoor.co

Fax: +44 (0) 113 252 7603

Web: finedooruk.co

R
U
B
B
E
R

S
C
R
E
E
N

M
E
D
I
A



Finedoor UK LLP, Hunslet Works, Pepper Road, Leeds, LS10 2RU

Telephone: +44 (0) 113 252 7601

Fax: +44 (0) 113 252 7603

E-mail: info@finedoor.co

Web: finedooruk.co

Rubber Tensioned Screen Panels



Rubbertend tensioned screen panels are a fabric reinforced rubber screen cloth that provide a cost effective alternative to woven wire or punched steel plate.

Thickenesses range from 3mm to 50mm and offer a variety of slotted, round or square apertures ranging from 4mm to 160mm configured to meet your specific screening requirements.

In addition to extended wear life and associated savings in downtime and maintenance reduced noise levels can also be obtained.



A range of centre clamps, rubber covered side hooks and capping rubber are also available.



Finedoor UK LLP, Hunslet Works, Pepper Road, Leeds, LS10 2RU

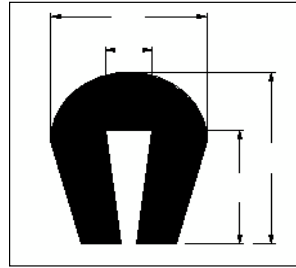
Telephone: +44 (0) 113 252 7601

E-mail: info@finedoor.co

Fax: +44 (0) 113 252 7603

Web: finedooruk.co

Capping Rubber



Type	A	B	C	D
0	30	12	38	28
1	30	12	50	35
2	35	12	60	40
3	40	12	75	50
9	30	9	40	25
12	40	12	50	33

Type 0,1,2&3 Standard roll length 25 metres

Type 9&12 Standard roll length 50 metres

Finedoor UK LLP, Hunslet Works, Pepper Road, Leeds, LS10 2RU

Telephone: +44 (0) 113 252 7601

E-mail: info@finedoor.co

Fax: +44 (0) 113 252 7603

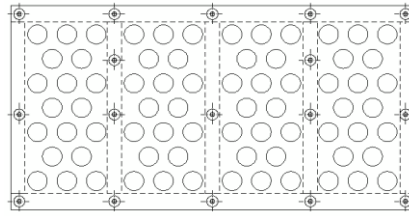
Web: finedooruk.co

Flexcord & Supercord Screen Panels

FLEXCORD

A hot vulcanised screen panel with an integral steel frame and reinforced with fabric plies.

Thickness available from 20 to 80mm
Punched apertures from 20 to 150mm
in square round or slot.



Installation onto existing screen frame by means of through bolts.

SUPERCORD

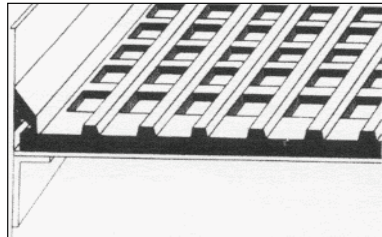


Perfect 60 rubber screen panels for primary screening. The panels are moulded with a fully self supporting frame and textile plies.

Apertures in the size range 15 to 150mm are moulded into the panel. The design of the hole has a relieving taper to ensure material passes through without pegging.

Panels can be moulded with carrier bars on the top surface to ensure more efficient screening and extended lifetime.

A full range of clamping bars and side protection plates are available.



Finedoor UK LLP, Hunslet Works, Pepper Road, Leeds, LS10 2RU

Telephone: +44 (0) 113 252 7601

E-mail: info@finedoor.co

Fax: +44 (0) 113 252 7603

Web: finedooruk.co

P
O
L
Y
E
U
R
E
T
H
A
N
E

S
C
R
E
E
N

M
E
D
I
A



Finedoor UK LLP, Hunslet Works, Pepper Road, Leeds, LS10 2RU

Telephone: +44 (0) 113 252 7601

E-mail: info@finedoor.co

Fax: +44 (0) 113 252 7603

Web: finedooruk.co

SCS Modular Screening System



SCS Polyurethane modules are manufactured from very high grade, cut and wear resistant polyurethanes of various types.

These are hand cast to ensure higher abrasion resistance

The three main grades are 90 Shore, red for wet applications, 83A Shore, blue for dry screening and a specialist 65 Shore, deep red soft polyurethane for dust and similar difficult applications.

There is a very extensive range of apertures to cater for most applications including slots for both dewatering and sizing applications.



The self supporting modular panels are generally 315 and 305 in any length required . The most popular size is 735/750 x 315.

Installation is by means of side protection and centre clamping bars with a simple wedge and pin fixing system. This ensures ease of installation on lower decks.



Finedoor UK LLP, Hunslet Works, Pepper Road, Leeds, LS10 2RU

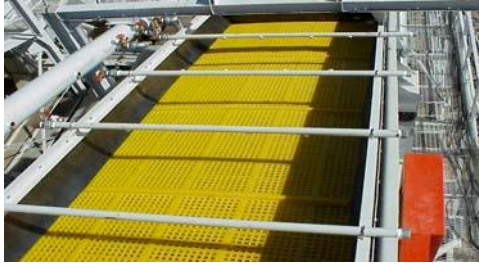
Telephone: +44 (0) 113 252 7601

E-mail: info@finedoor.co

Fax: +44 (0) 113 252 7603

Web: finedooruk.co

Polytend Tensioned Screen Panels



Longitudinally and transversely tensioned screen panels in exceptionally abrasion resistant MBC Polyurethane. Reinforced with embedded steel cables attached to tension hooks.

Apertures : Square or rectangular from 3.2 to 115mm.

Available in 85, 60 or 35 Shore A hardness Polyurethane to suit the differing materials and operating conditions.



Advantages:

- Exceptional abrasion resistance for long service life
- Moulded apertures and differing hardnesses to prevent pegging and blinding
- Steel cable reinforcement for high strength
- Blank areas moulded above longitudinal supports to reduce wear from rear
- Polyurethane protection extends right into the bend of the hook
- Extensive aperture range.



Finedoor UK LLP, Hunslet Works, Pepper Road, Leeds, LS10 2RU
Telephone: +44 (0) 113 252 7601 E-mail: info@finedoor.co
Fax: +44 (0) 113 252 7603 Web: finedooruk.co

Polyclean Tensioned Screen Panels



Longitudinally and transversely tensioned screen panels
in 35 Shore A hardness Polyurethane.

With very good anti blinding and sticking properties.

Reinforced with embedded steel cables attached to tension hooks.

A range of square and rectangular aperture sizes are available.

Advantages:

Moulded apertures and soft polyurethane to prevent pegging and blinding

Steel cable reinforcement for high strength

Blank areas moulded above longitudinal supports to reduce wear from rear

Polyurethane protection extends right into the bend of the hook

Extensive aperture range



Finedoor UK LLP, Hunslet Works, Pepper Road, Leeds, LS10 2RU

Telephone: +44 (0) 113 252 7601

E-mail: info@finedoor.co

Fax: +44 (0) 113 252 7603

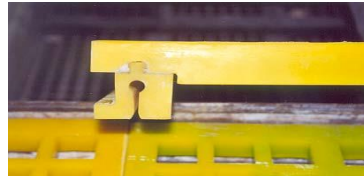
Web: finedooruk.co

Polystep Screen Polyurethane Panels



A range of polyurethane screen panels are available which can be fitted onto "step" type screen frames.

A specially designed adapter is fitted onto the existing framework. The Polyurethane panel hammers securely on to the adaptor



Complete screen surfaces can be replaced, or a trial line of panels down the length of the screen can be fitted. It is not possible to fit trial rows across the width of the screen.

Panel sizes are 300 x 620mm with apertures from 3.2 to 115mm.

Panels are available in 3 different hardnesses, 85,60 and 35 depending upon the application.



Finedoor UK LLP, Hunslet Works, Pepper Road, Leeds, LS10 2RU

Telephone: +44 (0) 113 252 7601

E-mail: info@finedoor.co

Fax: +44 (0) 113 252 7603

Web: finedooruk.co

Polyclip Modular Screen System

The Polyclip modular system has a number of unique advantages.

Uses existing subframe

The mounting bars (seen right) can be supplied in a format to fit all existing modular screen frames thereby eliminating the need for expensive screen frame changes.



Easy Installation

The fixing clip is installed with a hammer and requires only lateral force. This makes installation and replacement simple, even on multi deck screens where there is **limited space**

Efficient Screening

The fixing clip acts as a built in deflector ensuring that all material is diverted onto the screening surface ensuring the most efficient screening.



Aperture sizes

A full range of square and rectangular apertures are available from 3.2mm to 115mm square and dewatering slots from 0.2mm to 1mm x 11mm.

Polyclip panels are manufactured from a polyurethane elastomer formulated to have **very high abrasion resistance in both wet and dry applications.**



Finedoor UK LLP, Hunslet Works, Pepper Road, Leeds, LS10 2RU

Telephone: +44 (0) 113 252 7601

E-mail: info@finedoor.co

Fax: +44 (0) 113 252 7603

Web: finedooruk.co

Polyurethane Screen Panels

There are a wide variety of designs of modular screen panel systems available. Clip systems, plank systems, pin systems and step systems to name a few.



Finedoor are able to supply a range of high quality polyurethane screen media which can fit directly or by the means of inexpensive adapters onto most modular screen support frames.

With 3 different hardness compounds to suit varying feed and operating conditions and a full range of square aperture sizes from 3.2 to 115mm and slots from 0.2mm wide we are well equipped to provide a cost effective solution to your screening problems.



Finedoor UK LLP, Hunslet Works, Pepper Road, Leeds, LS10 2RU

Telephone: +44 (0) 113 252 7601

E-mail: info@finedoor.co

Fax: +44 (0) 113 252 7603

Web: finedooruk.co

S
P
R
A
Y

B
A
R

S
Y
S
T
E
M
S

A
N
D

A
C
C
E
S
S
O
R
I
E
S



Finedoor UK LLP, Hunslet Works, Pepper Road, Leeds, LS10 2RU

Telephone: +44 (0) 113 252 7601

Fax: +44 (0) 113 252 7603

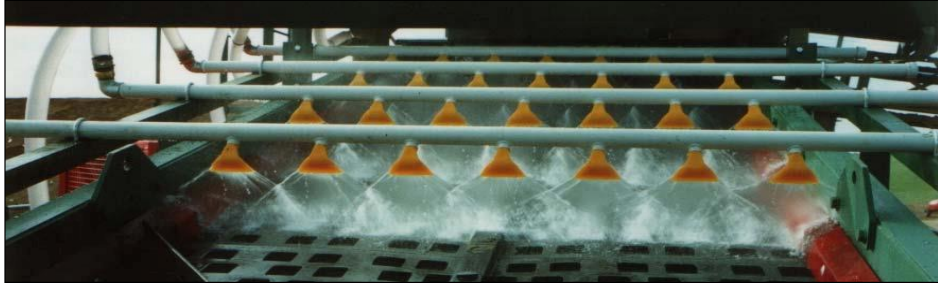
E-mail: info@finedoor.co

Web: finedooruk.co

Spray Bar Systems & Accessories



Spray bar systems designed to suit both single and multi deck screens.



Polyurethane covers can be supplied to protect spray bars and prolong life.

Water consumption in litres per minute for each size of spray nozzle.

Pressure	5mm	7mm	9mm	11.5mm
1.0	14.0	28.0	44.0	52.3
1.5	15.6	33.5	53.3	65.7
2.0	19.3	39.0	62.7	79.1
2.5	22.0	44.5	72.0	92.5
3.0	24.6	50.0	81.4	106.0
3.5	27.3	55.5	90.8	119.4
4.0	30.0	61.0	100.1	132.8



Finedoor UK LLP, Hunslet Works, Pepper Road, Leeds, LS10 2RU

Telephone: +44 (0) 113 252 7601

E-mail: info@finedoor.co

Fax: +44 (0) 113 252 7603

Web: finedooruk.co

D
U
S
T

E
N
C
A
P
S
U
L
A
T
I
O
N



Finedoor UK LLP, Hunslet Works, Pepper Road, Leeds, LS10 2RU

Telephone: +44 (0) 113 252 7601

E-mail: info@finedoor.co

Fax: +44 (0) 113 252 7603

Web: finedooruk.co

Dust Encapsulation

DUST CONTROL

To comply with Dust Control requirements we can supply complete Dust Encapsulation Systems, either with High Temperature flexible rubber or complete Steel Enclosure.



STEEL ENCLOSURE

The Steel Enclosure is fabricated from folded and welded plate, with sufficient access via removable doors to allow maintenance to the screen or for Screen Mesh changes
Access Doors are fitted with Quick Release Catches and also have High Temperature Dust Seals

RUBBER ENCAPSULATION

The Rubber Encapsulation is fitted with Knock on Strips, onto Factory fitted steel beading all round the Screen.
It is necessary for the corresponding beads to be installed on the Fixed Screen Chutes and Canopy over the Screen.



SPARE PARTS

Knock on Strip
Radius Bend
Encapsulation Rubber Sheet
Encapsulation Fabric Sheet



Finedoor UK LLP, Hunslet Works, Pepper Road, Leeds, LS10 2RU

Telephone: +44 (0) 113 252 7601

Fax: +44 (0) 113 252 7603

E-mail: info@finedoor.co

Web: finedooruk.co

C
O
N
V
E
Y
O
R

A
C
C
E
S
S
O
R
I
E
S



Finedoor UK LLP, Hunslet Works, Pepper Road, Leeds, LS10 2RU

Telephone: +44 (0) 113 252 7601

E-mail: info@finedoor.co

Fax: +44 (0) 113 252 7603

Web: finedooruk.co

Impact Bars & Slider Plates

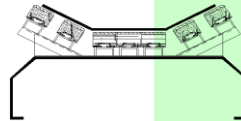
Impact Bars

Impact Bars are designed to take the place of impact rollers at loading and transfer points on conveyors. They are bolted in place onto a specially constructed frame and eliminate the danger of damage to the belt caused by sticking or worn rollers.



The bars support the belt along its length preventing the danger of sagging between rollers and therefore eliminating belt spillage. The 10mm thick UHMWP top surface ensures long wear life.

Width	Height	Length
75	50	1220 or 1500
75	75	1220 or 1500
75	100	1220 or 1500
100	50	1220 or 1500
100	75	1220 or 1500
100	100	1220 or 1500

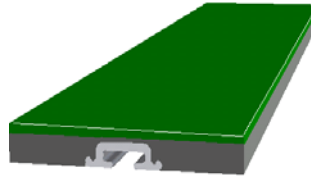


Slider Plates

In applications where there is little or no impact but support of the belt edges is required, slider plates are used.

These are 1200mm long x 28mm thick and have a 10mm thick UHMWP top.

Three widths are available 200,250 and 300mm



Skirting Rubber



Our standard Perfect 50 skirting rubber is a top quality rubber with high abrasion resistance and tensile strength. Available in 20 metre rolls 10mm thick in either 150 or 200mm widths.

A range of rubber compounds for skirting rubber to suit applications from quarrying to the food industry are available to order.

Perfect Sandwich belt scraping rubber, Perfect 60 sandwiching Criblex 45. Available in 10 metre rolls 25mm thick by 150mm wide.

A full range of other conveyor accessories are available including Belt scrapers, Drum Lagging, Impact bars, Slider plates.



Finedoor UK LLP, Hunslet Works, Pepper Road, Leeds, LS10 2RU

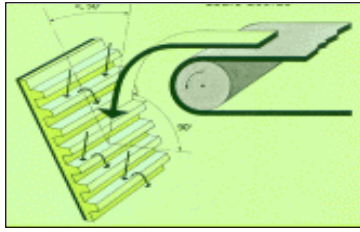
Telephone: +44 (0) 113 252 7601

Fax: +44 (0) 113 252 7603

E-mail: info@finedoor.co

Web: finedooruk.co

Profile Elements



Profile elements are designed to alter the angle of impact of stone onto the liner in order to achieve an impingement angle as close to 90 degrees as possible.

A 90 degree angle ensures that rubber can use its resilience to absorb impact and thus combat abrasion.

Profile elements are manufactured using Perfect 60 compound which has been formulated to give extremely high abrasion resistance and can be used to achieve long lifetimes in the harshest environments.

Thickness	Widths	Lengths	
45	500, 750, 1000	1000, 1500, 2000	
55	500, 750, 1000	1000, 1500, 2000	
80	500, 750, 1000	1000, 1500, 2000	
105	500, 750, 1000	1000, 1500, 2000	
130	500, 750, 1000	1000, 1500, 2000	

Available with or without steel backing

Steel backed plates incorporate 5mm steel in the total thickness.

A cutting to size, drilling and counterboring service is available.
Fax a drawing for a Quotation.



Finedoor UK LLP, Hunslet Works, Pepper Road, Leeds, LS10 2RU

Telephone: +44 (0) 113 252 7601

E-mail: info@finedoor.co

Fax: +44 (0) 113 252 7603

Web: finedooruk.co

Pulley Lagging

Pulley Lagging

Perfect 60ML is a diamond pattern pulley lagging with an adhesive bonding layer on the back face. The rubber compound has exceptional wear resistance to ensure long service life.

Thickness 8,10,12 and 15mm
Roll size 1500mm x 10metres

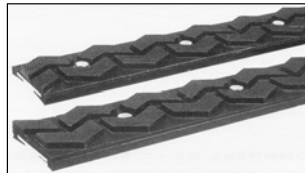


Pulley Bars



Pulley bars are manufactured from a high wear resistant rubber. The special arrow pattern is designed to ensure high friction between belt and drum even in wet conditions. The pulley bars are bolted to the pulley with self threading screws which means there is no need to remove the pulley or belt when lagging or replacing.

Bar size
1400mm long x 71mm wide x 20mm thick



Flexi Lagging

Flexi lagging is bolted to the drum along its leading edge. This allows the lagging to be fitted with the drum in situ. It also allows the lagging to flex which gives it a self cleaning property. The nodule pattern gives very high traction and, combined with our Perfect 60 compound, exceptional lifetime. Pad size 1200mm long x 300mm wide x 18mm thick.



Finedoor UK LLP, Hunslet Works, Pepper Road, Leeds, LS10 2RU

Telephone: +44 (0) 113 252 7601

E-mail: info@finedoor.co

Fax: +44 (0) 113 252 7603

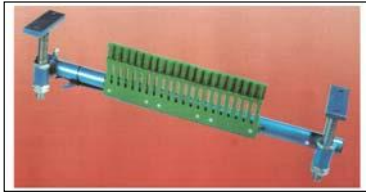
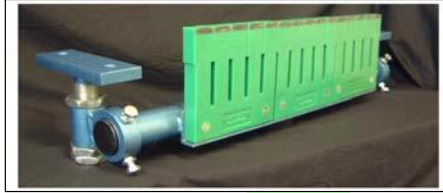
Web: finedooruk.co

Conveyor Belt Scraper

Finedoor offer a range of belt scrapers and accessories to suit most applications

Flat Belt Scraper

Flat Belt Scraper with Patented "finger system" works on both vulcanised and clip joint belts. Flexible fixing system allows installation in any position from snub drum backwards. Low cost maintenance and spares.



Chevron Belt Scraper

Chevron Belt Scraper with Patented "finger system" works on both vulcanised and clip joint belts. Flexible fixing system allows installation in any position from snub drum backwards. Low cost maintenance and spares.

A selection of belt scraping rubber is available in 10 Mt. Rolls.

Perfect Sandwich belt scraping rubber,
Perfect 60 sandwiching Criblex 45 - 25mm thick x 150mm wide.

Perfect 60 Plain - 25mm thick x 150mm wide.



Finedoor UK LLP, Hunslet Works, Pepper Road, Leeds, LS10 2RU

Telephone: +44 (0) 113 252 7601

E-mail: info@finedoor.co

Fax: +44 (0) 113 252 7603

Web: finedooruk.co

W
A
S
H
I
N
G

B
A
R
R
E
L

L
I
N
I
N
G
S

A
N
D

T
R
O
M
M
E
L
S



Finedoor UK LLP, Hunslet Works, Pepper Road, Leeds, LS10 2RU

Telephone: +44 (0) 113 252 7601

E-mail: info@finedoor.co

Fax: +44 (0) 113 252 7603

Web: finedooruk.co

Washing Barrel Linings & Trommels



A full range of products for lining of washing and scrubber barrels. Lifter bars are moulded with an aluminium clamping rail which accepts industry standard drop forged "T" bolts.

Shell and head plates can be moulded to the required radius or fabricated from steel backed rubber and rolled. "Perfect Alu and Perfect 65 one ply are sheet materials backed with Aluminium or fabric and can be used to fabricate shell plates.

All these rubber compounds have a DIN abrasion figure of 75 making them leaders in abrasion resistance.

Discharge Trommels and Screens

Complete discharge trommels and screens in Polyurethane or Rubber panels can be supplied with a variety of apertures.



Finedoor UK LLP, Hunslet Works, Pepper Road, Leeds, LS10 2RU

Telephone: +44 (0) 113 252 7601

E-mail: info@finedoor.co

Fax: +44 (0) 113 252 7603

Web: finedooruk.co

M
I
L
L

L
I
N
I
N
G
S



Finedoor UK LLP, Hunslet Works, Pepper Road, Leeds, LS10 2RU

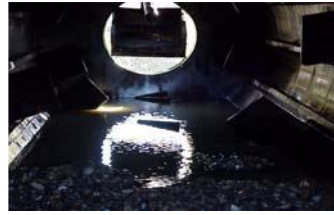
Telephone: +44 (0) 113 252 7601

Fax: +44 (0) 113 252 7603

E-mail: info@finedoor.co

Web: finedooruk.co

Mill Linings & Lifter Bars



Lining components for Mills and Washing barrels are made from a specially formulated rubber compound with very high abrasion and impact resistance.

They are used in a wide variety of industries such as mines, quarries, sand and gravel, ceramic industry, sugar, steel... Linings can be supplied for all types of mills (ball, rod, and pebble) and in all types of design.



A full range of plates and lifter bars specifically designed for mill and washing barrel linings are available.

Linings are designed to fit all types of mills:

Autogenous and semi-autogenous

Ball and Pebble Mills

Continuous, Overflow discharge, Grate Discharge,
Multiple Discharge, Multiple Compartments, Batch

Rod Mills

Continuous, Overflow Discharge, End Discharge Ports,
Central Discharge Ports

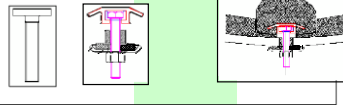
Rubber Compound

In mills, wear is caused by a combination of 3 factors, corrosion, impact and abrasion. We have specific rubber compounds to combat these combinations of factors.

Whilst the performance of the design, the compound, the manufacturing, the speed of delivery and the competence of our installation team can be demonstrated the performance of the lining itself is also very important. After studying the milling parameters: size and type of feed material, mill charge, size and speed of mill, we can, normally without changing these parameters, replace a steel lining with a rubber lining.

A lining correctly designed will not cause a capacity reduction. In fact by selecting the correct type, spacing and height of lifters relative to the speed of the mill we can ensure an optimal capacity and performance from the mill.

Simple fixing system:
Using standard bolts and an adapter or drop forged «T» bolts running in an aluminium rail the lifter bars clamp in the shell plates simply and securely



Finedoor UK LLP, Hunslet Works, Pepper Road, Leeds, LS10 2RU

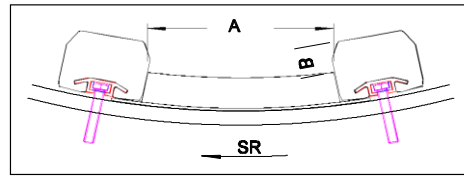
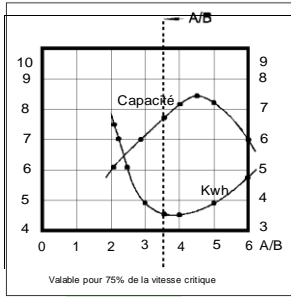
Telephone: +44 (0) 113 252 7601

E-mail: info@finedoor.co

Fax: +44 (0) 113 252 7603

Web: finedooruk.co

Mill Linings & Lifter Bars

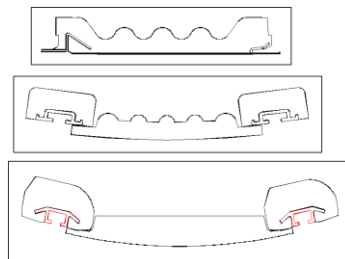
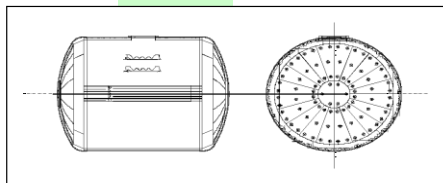


SELECTING A RUBBER LINING:

The wide variety of lining elements allows many types of configuration both technical and commercial. We can offer a lining design that offers one of the following.

Maximum Capacity Long Life and Normal Capacity Maximum Life Time

Economics: for the ceramic industry we offer a lining system which is installed very simply by welding. The economy of the lining is by virtue of the integrated lifter bar and plate design which allows a very simple and quick installation, a very long lifetime and a capacity far greater than with a sillex lining.



Installation of a mill lining:

Compared with steel or sillex, rubber linings are, lighter, and quicker to install. (The first installation may require extra time if the shell needs to be drilled). Downtime is reduced and thus the availability of the mill is increased improving the profitability of the milling operation.

Reduction in noise level

Legislation in the workplace against noise is becoming increasingly important. The use of rubber linings by absorbing impact reduces the problems of noise and abrasion.



Finedoor UK LLP, Hunslet Works, Pepper Road, Leeds, LS10 2RU
 Telephone: +44 (0) 113 252 7601 E-mail: info@finedoor.co
 Fax: +44 (0) 113 252 7603 Web: finedooruk.co