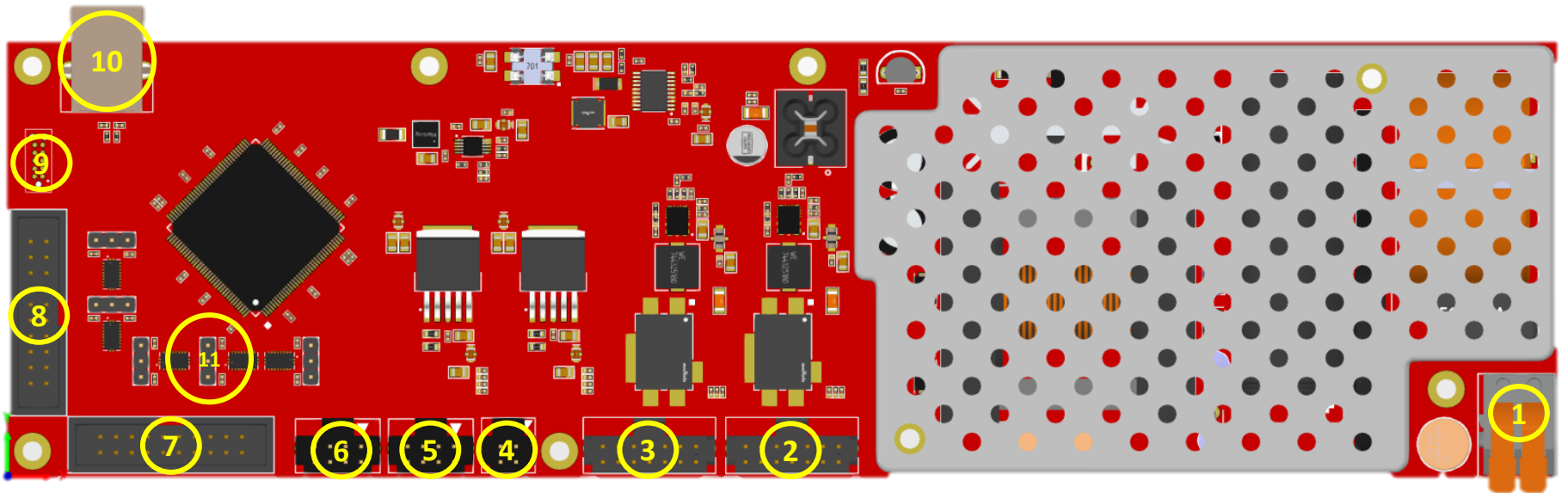


XIPC40-UNI95W

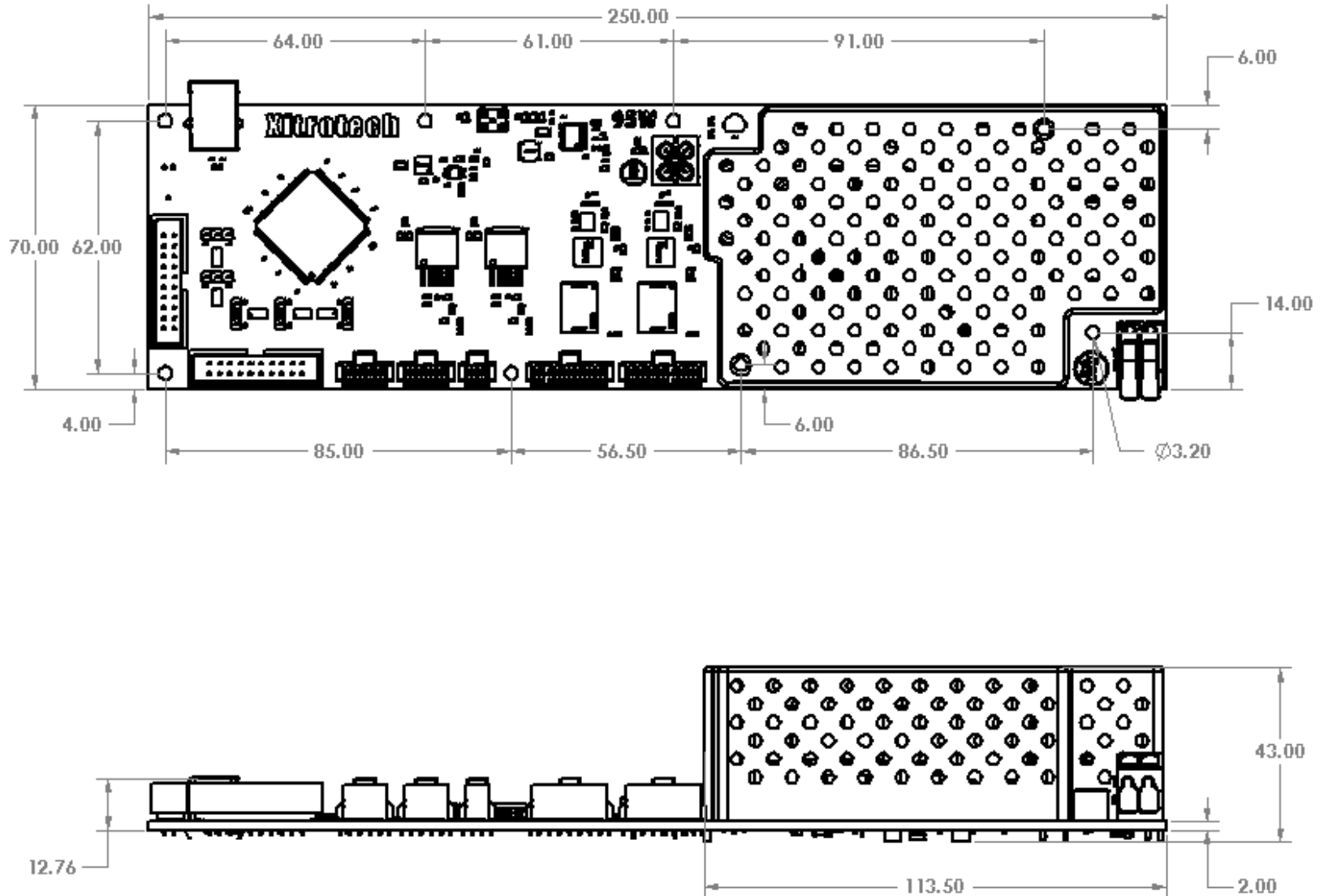
Key Features:

- Power Input: AC 85 ~ 264
- Max Power: 95W
- Ultra Low EMI
- Power Output: 2 x 10 Port $+5.65\text{ V} \pm 0.1\text{ V}$ / 6 Amp Per Channel, 2 x 6 Port $-5\text{ V} \pm 0.1\text{ V}$ / 1 Amp Per Channel, $+12\text{ V} \pm 0.1\text{ V}$ / 1 Amp, $-12\text{ V} \pm 0.1\text{ V}$ / 2 Amp
- Overcurrent Protection And Overtemperature Protection
- Controller: ARM Cortex M3 / JTAG
- Control I/O : GPIO, SPI, ADC, RS232, I2C / Selectable: 3.3 or 5 Volt
- USB Port
- Temp Monitoring
- Can Be Used In 2U Units And Above



1. Universal AC Input
2. Channel1 +5.65 V Output
3. Channel2 +5.65 V Output
4. +12 V & -12 V Output
5. Channel1 -5 V Output
6. Channel2 -5 V Output
7. Channel1 Control I/O
8. Channel2 Control I/O
9. MCU JTAG
- 10.USB
- 11.Jumper To Adjust I/O Voltage (3.3 V or 5 V)

Outline Dimensions



Dimensions are in (mm). Tolerances: $\pm .02$ mm

Note:

1. Case material: Aluminum

To obtain price, delivery, or to place an order contact sales@xitrotech.com

www.xitrotech.com