



# X-Class Price List

Effective from November 2017

**Mercedes-Benz**

Vans. Born to run.









# X-Class. First of a new kind.

As the first ever pickup from a premium manufacturer, the X-Class stands apart from the rest. It's a rugged, all-terrain pickup that's equally well suited to modern urban lifestyles. It's ideal for work or play. It's the first of a new kind.

The X-Class pushes the boundaries of the classic pickup – offering comfort, design, safety and connectivity in addition to an impressive load capacity of over 1,000kg and a towing capability of up to 3,500kg. There's more than enough space for all your tools and work materials – or your sports and leisure gear. The choice is yours.

The vehicle's tough performance is complemented with a ride quality that makes daily driving a pleasure. And with numerous options and accessories to choose from, you can make the X-Class your own. See for yourself over the following pages, where you'll find a comprehensive breakdown of everything available.

**Contact your local Dealer  
to book a test drive.**

➤ <b>List prices</b>	<b>5</b>	➤ <b>Wheels</b>	<b>14</b>
X-Class 220 d 4MATIC	5	➤ <b>Exterior Colours</b>	<b>17</b>
X-Class 250 d 4MATIC	5	Non-metallic Paints	17
➤ <b>Standard equipment</b>	<b>7</b>	Metallic Paints	17
Communications and In-vehicle Entertainment	7	➤ <b>Interior Colours and Materials</b>	<b>18</b>
Exterior	7	➤ <b>Combination Options</b>	<b>20</b>
Interior	8	Non-metallic Paints	20
Safety and Driver Assistance	9	Metallic Paints	20
Steering, Chassis and Powertrain	9	➤ <b>Technical data</b>	<b>22</b>
➤ <b>Optional Packages</b>	<b>11</b>		
Comfort Package	11		
Smoker Package	11		
Style Package	11		
Parking Package	11		
Plus Package	11		
Winter Package	11		
➤ <b>Optional equipment</b>	<b>13</b>		
Steering, Chassis and Powertrain	13		
Interior	13		
Communications and In-vehicle Entertainment	13		
Tyres	13		







# X-Class Pricing

Engine	Bodystyle	Model line	Transmission	CO <sub>2</sub> emissions, g/km	Basic list price, excl. VAT	Basic list price, incl. VAT
<b>X 220 d 4MATIC</b> Diesel, in-line, 4-cylinder with common-rail and turbocharger, 2298cc,163hp (120kW), Euro 6	Doublecab Pickup	Line PURE	6-speed manual	200	£27,310	£32,772
	Doublecab Pickup	Line PROGRESSIVE	6-speed manual	200	£28,510	£34,212
<b>X 250 d 4MATIC</b> Diesel, in-line, 4-cylinder with common-rail and twin-stage turbocharger, 2298cc,190hp (140kW), Euro 6	Doublecab Pickup	Line PROGRESSIVE	7-speed automatic	207	£30,510	£36,612
	Doublecab Pickup	Line POWER	7-speed automatic	207	£34,100	£40,920

Model and option List Price are quoted ex-factory and exclude VAT unless otherwise stated. A standard delivery charge of £600 excluding VAT will be added to model prices quoted in this price list. All model prices include standard finish paint choice. The right is reserved to alter specification and vary prices without notice. The availability of options may depend on the chosen base vehicle and other optional equipment specified, and should be confirmed with your Mercedes-Benz Dealer prior to order placement. Mercedes-Benz Vans UK Ltd, Tongwell, Milton Keynes, MK15 8BA







# X-Class standard equipment

## Communications and In-vehicle Entertainment

	PURE Line	PROGRESSIVE Line	POWER Line
Audio 20 CD infotainment system with 7-inch high definition screen, rotary controller with touchpad, Bluetooth® audio and media interface	●	●	●
DAB digital radio	●	●	●
Pre-wiring for Garmin MAP PILOT®	●	●	●
KEYLESS GO	-	-	●
Mercedes me Connect – Standard Services Including emergency call system 'eCall', accident recovery, breakdown and maintenance management	●	●	●
Reverse Camera	●	●	●
8-speaker sound system	-	●	●
Basic speaker system, 2-way, front and rear	●	-	-
Integrated radio aerial	●	●	●

## Exterior

	PURE Line	PROGRESSIVE Line	POWER Line
Painted bumpers with simulated under guard in matt black	-	●	-
Painted bumpers with simulated under guard in chrome	-	-	●
Rear bumper with integrated step	●	-	-
Rear bumper in chrome with integrated step	-	-	●
Fog lights	●	●	-
Fog lights with chrome surround	-	-	●
Aluminium door sills featuring 'Mercedes-Benz' lettering	-	●	●
Chrome door handles	-	●	●
Shoulder line trim strips in chrome	-	-	●
Halogen headlights	●	●	-
LED high-performance headlights with cleaning system	-	□	●
LED tail-lights	-	□	●
LED load area lighting	●	●	●
Tie-down loops in load area (4)	●	●	●
Load securing rail system	□	●	●
Electrically adjustable exterior mirrors	●	●	●
Heated exterior mirrors	-	●	●
Electrically folding exterior mirrors	-	-	●
Towing hook, rear	●	●	●
Electrical auxiliary heating	●	●	●
Radiator grille with matt black finish	●	-	-



Interior	PURE Line	PROGRESSIVE Line	POWER Line
Driver's seat, manually adjustable	●	-	-
Driver's seat, 8-way electrically adjustable	-	□	●
Co-driver's seat, manually adjustable	●	-	-
Co-driver's seat, 8-way electrically adjustable	-	□	●
Lumbar adjustment, driver and co-driver	-	□	●
Tunja black fabric upholstery	●	-	-
Black fabric upholstery	-	●	-
ARTICO leather with DINAMICA microfiber upholstery	-	□	●
Dashboard in ARTICO leather with topstitching	-	-	●
Dashboard in grained black	●	●	-
Interior trim, aluminium	-	-	●
Instrument dials with round covers	-	●	●
Centre console with large storage compartment, armrest and cup holder	●	●	●
Stowage net for co-driver foot well	-	□	●
Air Conditioning, semi-automatic	●	●	-
THERMOTRONIC automatic climate control	-	□	●
Automatic dimming interior mirror with integrated compass function	-	●	●
Illuminated sun visors on the driver's and co-driver's side	-	●	●
Lighting for the front foot well and exit lamps	-	●	●
High-gloss black details in air vents	●	-	-
Chrome air vents	-	●	●
Heat insulation for windscreen, with filter band	-	●	●

Interior	PURE Line	PROGRESSIVE Line	POWER Line
Aluminium style interior trim	-	-	●
i-Size and ISOFIX with Top Tether child restraint system for the outer rear seats	●	●	●
Plastic flooring	●	-	-
Carpet flooring	-	●	●
12V power outlet	●	●	●



Safety and Driver Assistance	PURE Line	PROGRESSIVE Line	POWER Line
Driver and co-driver's airbags	●	●	●
Driver and co-driver's thorax airbags	●	●	●
Window airbags, A-D pillar	●	●	●
Knee airbag, driver	●	●	●
Active Brake Assist (autonomous emergency braking, radar type)	●	●	●
Lane Keeping Assist	●	●	●
Traffic Sign Assist	●	●	●
eCall automatic emergency response	●	●	●
Electronic Stability Programme	●	●	●
Trailer Stability Assist	◇	◇	◇
Daytime Running Lights	●	●	●
Hill Start Assist	●	●	●
Tyre Pressure Monitoring System (TPMS)	●	●	●
Seatbelt reminder and automatic co-driver airbag deactivation	●	●	●
Third brake light, LED	●	●	●
Comfort turn signal, 3-flashes	●	●	●
First Aid kit and warning triangle (EC compliant)	●	●	●
Automatic windscreen wipers	-	●	●
Rain sensor	-	●	●

Steering, Chassis and Powertrain	PURE Line	PROGRESSIVE Line	POWER Line
7-speed automatic transmission (Standard for 250d)	●	●	●
6-speed manual transmission (Standard for 220d)	●	●	●
4MATIC selectable all-wheel drive with low-range and drive selection mode	●	●	●
Double wishbone front suspension	●	●	●
Multi-link rear suspension	●	●	●
Cruise control	●	●	●
Instrument cluster with colour display	●	●	●
Multifunction steering wheel, manually adjustable	●	●	●
Leather steering wheel with chrome highlights	-	●	●
Leather gear shift lever and handbrake lever	-	●	●
17-litre AdBlue® tank capacity	●	●	●
Selective Catalytic Reduction technology with Diesel Particulate Filter	●	●	●
Emissions standard Euro 6	●	●	●
Comfort Suspension	●	●	●
Summer Tyres	●	●	●
Spare wheel	●	●	●







# X-Class Optional Packages

Option	Notes	Option code	PURE Line	PROGRESSIVE Line	POWER Line	Basic list price, excl. VAT	Basic list price, incl. VAT
Comfort Package	Includes: Driver's seat, 8-way electrically adjustable (SF1); Co-driver's seat, 8-way electrically adjustable (SF2); Lumbar adjustment, driver and co-driver (SE4); THERMOTRONIC automatic climate control (HH4); ARTICO leather with DINAMICA microfiber upholstery (S1H); Storage net for co-driver footwell (V5E)	F2R	–	○	–	£1,235.00	£1,482.00
Smoker Package	Includes: Ashtray for cup holder and lighter in 12V socket	V85	○	○	○	£30.00	£36.00
Style Package	Includes: Privacy Glass, black (W70); Electric rear window (W85); Running boards, left and right (T1A); Roof rails, anodised (D14); 19-inch Six-twin-spoke light-alloy wheels (R1E)	F2S	–	–	○	£1,345.00	£1,614.00
Style Package	Includes: LED High-performance headlights, static type, with LED daytime running lights (LG7); LED tail-lights (L22); Privacy Glass, black (W70); Running boards, left and right (T1A); Roof rails, anodised (D14); 18-inch Six-twin-spoke light-alloy wheels (R1C)	F2S	–	○	–	£2,190.00	£2,628.00
Parking Package	Includes: PARKTRONIC parking sensors (EZ8); 360° camera (JS1). Networked cameras in front grille, wing mirrors and tailgate capture a 360° bird's-eye view of vehicle's immediate surroundings to assist in avoiding obstacles and pedestrians when parking	EZ6	–	○	○	£570.00	£708.00
Plus Package	Includes: PARKTRONIC parking sensors (EZ8); Load rail securing system (VV2)	F2Q	○	–	–	£700.00	£840.00
Winter Package	Includes: Heated Seats (H15); Washer fluid jets, heated (F2F)	F2W	○	○	○	£340.00	£408.00












# X-Class Optional Equipment

Notes		Option code	PURE Line	PROGRESSIVE Line	POWER Line	Basic list price, excl. VAT	Basic list price, incl. VAT
<b>Steering, Chassis and Powertrain</b>							
Differential lock, rear axle	Enhances off-road driving capabilities in mud, sand or snow or any other situation where traction may be lost	A71	○	○	○	£495.00	£594.00
Increased ground clearance	Improves off-road driving capabilities and contributes to a more striking all-terrain style appearance. The ride-height of the vehicle is raised by 20mm by increased spring length	C2B	○	○	○	£220.00	£264.00
Tow bar	Installation of a ridged type tow bar. Also includes Electrical connection (E57)	Q22	○	○	○	£440.00	£528.00
Upgraded Alternator	Installation of a 14V / 250A alternator	M60	–	○	○	£205.00	£246.00
<b>Interior</b>							
Leather interior, black	Includes seat upholstery in high-grade leather with stitching in alpaca grey	S1G	–	–	○	£890.00	£1,074.00
Leather interior, nut brown	Includes seat upholstery in high-grade leather with stitching in black	S1B	–	–	○	£890.00	£1,074.00
Wood grain style interior trim	Installation of a grained wood style trim piece	F2K	–	–	○	£225.00	£270.00
Black roof liner		VD7	–	○	○	£215.00	£258.00
<b>Communications and In-vehicle Entertainment</b>							
COMAND Online Navigation1	8.4-inch high-resolution colour display, hard disk drive (HDD) navigation with 3D map display, Live Traffic Information and LINGUATRONIC voice control.	EJ9	–	○	○	£2,225.00	£2,670.00
Live Traffic Information	Included COMAND Online Navigation. Optional for vehicles equipped with Garmin MAP PILOT® Navigation	EY2	◇	◇	◇	£0.00	£0.00
<b>Tyres</b>							
All Season / Winter tyres	Not available in conjunction with 19-inch light alloy wheels. Only available for certain models.	RM0	◇	◇	◇	£130.00	£156.00
Winter tyres	Not available in conjunction with 19-inch light alloy wheels. Only available for certain models.	RM1	◇	◇	◇	£130.00	£156.00
Metallic Paint			○	○	○	£510.00	£612.00

# X-Class Wheels

Option	Notes	Option code		PURE Line	PROGRESSIVE Line	POWER Line	Basic list price, excl. VAT	Basic list price, incl. VAT
19-inch multi-spoke light-alloy wheel (4), tremolite grey 225/55 tyres	Not available until April 2018	R1F		-	○	○	£895.00 PROGRESSIVE	£1,074.00 PROGRESSIVE
							£485.00 POWER	£582.00 POWER
19-inch six-twin-spoke light-alloy wheel (4), bi-colour 225/55 tyres	Also available as part of the Style Package for POWER Line models	R1E		-	○	○	£895.00 PROGRESSIVE	£1,074.00 PROGRESSIVE
							£485.00 POWER	£582.00 POWER
18-inch five-twin-spoke light-alloy wheel (4), bi-colour 225/60 tyres	Not available until April 2018	R1D		-	○	○	£570.00 PROGRESSIVE	£684.00 PROGRESSIVE
							£160.00 POWER	£192.00 POWER
18-inch six-twin-spoke light-alloy wheel (4), himalaya grey 225/60 tyres	Also available as part of the Style Package for PROGRSSIVE Line models	R1C		-	○	●	£405.00 PROGRESSIVE	£486.00 PROGRESSIVE



Option	Notes	Option code		PURE Line	PROGRESSIVE Line	POWER Line	Basic list price, excl. VAT	Basic list price, incl. VAT
17-inch six-twin-spoke light-alloy wheel (4), bi-colour 255/65 tyres	Not available until April 2018	R1B		○	○	-	£570.00 PURE	£684.00 PURE
							£160.00 PROGRESSIVE	£192.00 PROGRESSIVE
17-inch six-twin-spoke light-alloy wheel (4), vanadium silver 255/65 tyres		R1A		○	●	-	£405.00 PURE	£486.00 PURE
17-inch steel wheel (4)				●	-	-		







# Exterior Colours

## Non-metallic Paints

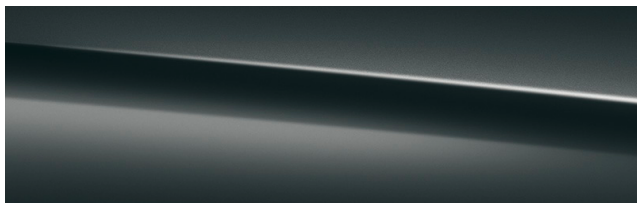
Standard<sup>1</sup>



3142 danakil red



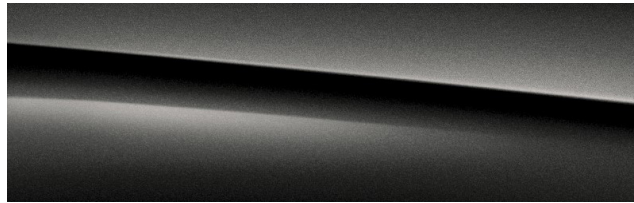
9139 chisana white



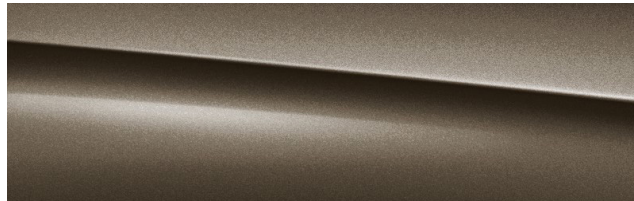
6580 granite green

## Metallic Paints

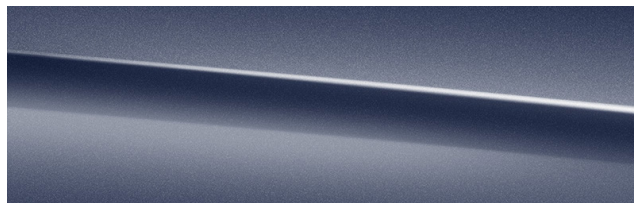
Optional<sup>1,2</sup>



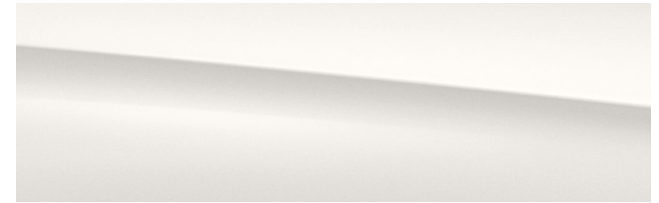
9291 kabara black



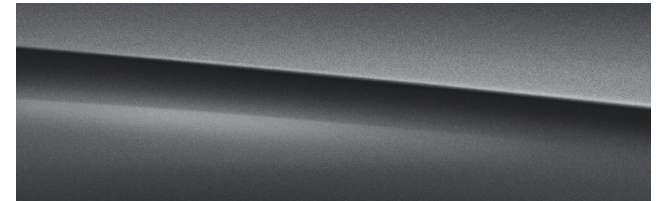
1288 axinit bronze



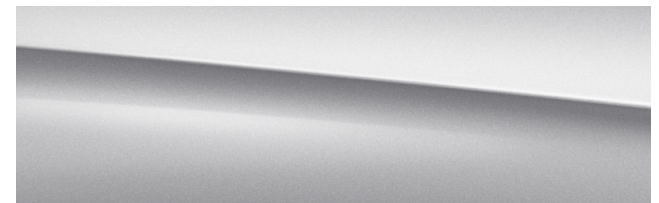
5890 cavansite blue



9389 bering white



7259 rock grey



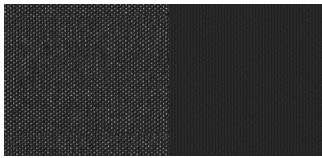
9988 diamond silver

<sup>1</sup>Due to limitations of on-screen colour representation, paint colours shown here may not be completely representative of a finished vehicle. <sup>2</sup>At extra cost.



# Interior Colours and Materials

**Black fabric**  
Standard for Line-PROGRESSIVE  
and Line-PURE



Black (S1F/S1E)

**ARTICO leather<sup>1</sup> /DINAMICA  
microfiber**  
Standard for Line-POWER



Black ARTICO/DINAMICA (S1H)

**Leather, black**  
Optional for Line-POWER



Black Leather (S1G)

**Leather, coloured**  
Optional for Line-POWER

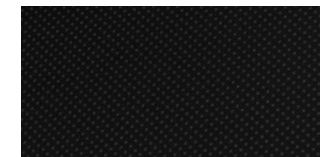


Nut brown Leather (J1C)

**Trims for dashboard**



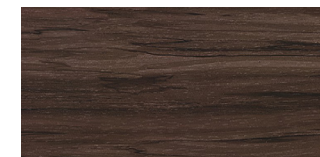
Black Grained (not coded)



Black high-gloss (F2L)

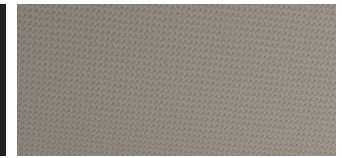


Aluminium (F2J)



Wood (F2K)

**Roof linings**



Macchiato beige (VD4)



Black (VD7)

<sup>1</sup>Due to limitations of on-screen colour representation, paint and trim colours shown here may not be completely representative of a finished vehicle. <sup>2</sup>At extra cost.

# Interior Colours and Materials

Seat upholstery	Line-PROGRESSIVE	Line-PROGRESSIVE	Line-POWER	Line-POWER	Line-POWER
	Black fabric Standard for Line-PROGRESSIVE and Line-PURE	ARTICO leather <sup>1</sup> /DINAMICA microfiber	ARTICO leather <sup>1</sup> /DINAMICA microfiber	Black Leather (S1G)	Nut brown leather (J1C)
Contrast stitching	n/a	n/a	Alpaca grey	Alpaca grey	Black
Main colour	Black grained	Black grained	Black grained	Black grained	Black grained
Secondary colour	Black grained	Black grained	Artificial leather with topstitching, black	Artificial leather with topstitching, black	Artificial leather with topstitching, brown
Styling elements	Black, high-gloss	Silver shadow	Silver shadow	Silver shadow	Silver shadow
Steering wheel and gear lever	Black grained	Leather	Leather	Leather	Leather

<sup>1</sup>Due to limitations of on-screen colour representation, paint and trim colours shown here may not be completely representative of a finished vehicle. <sup>2</sup>At extra cost.



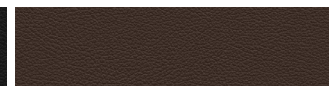
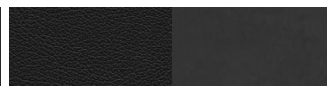
# Combination Options

**Black fabric**  
Standard for Line-PROGRESSIVE  
and Line-PURE

**ARTICO leather<sup>1</sup> / DINAMICA  
microfiber**  
Standard for Line-POWER

**Leather, black**  
Optional for Line-POWER

**Leather, coloured**  
Optional for Line-POWER



## Non-metallic Paints

Standard<sup>1</sup>

3142 danakil red		●	●	●	◇
9139 chisana white		●	●	●	●
6580 granite green		●	●	●	○

## Metallic Paints

Optional<sup>1,2</sup>

9291 kabara black		●	●	●	●
9389 bering white		●	●	●	●
1288 axinit bronze		●	●	●	●
7259 rock grey		●	●	●	◇
5890 cavansite blue		●	●	●	○
9988 diamond silver		●	●	●	◇

● Recommended   ○ Possible   ◇ Not recommended   – Not available

<sup>1</sup>Due to limitations of on-screen colour representation, paint and trim colours shown here may not be completely representative of a finished vehicle. <sup>2</sup>At extra cost.







# Technical data

## Manual transmission

Low height with eco stop/start

### X 220 d 4MATIC

Number of cylinders/Arrangement	4/in-line
Displacement in cm <sup>3</sup>	2298
Rated output <sup>1</sup> in PS (kW) at rpm	163 (120)/3750
Maximum torque <sup>1</sup> in Nm at rpm	403/1500-2500
Transmission	6-speed manual transmission
Acceleration from 0-62 mph in s	12.9
Top speed ca. in mp/h	105
Standard tyres <sup>2</sup>	255/65 R17
<b>Fuel consumption<sup>1,3</sup> in mpg</b>	
Urban	34.9
Extra-urban	38.7
Combined	37.2
CO2-emissions <sup>1</sup> in g/km combined	200
Useable load area inside Platform [m <sup>2</sup> ]	2.48
Turning circle diameter (wall to wall) in m	13.4
Unladen weight <sup>4,5</sup> in kg	2213
Payload in kg	1087
Total weight in kg	3300
Trailer load in kg braked/unbraked	3500/750
Total weight towing mode in kg	6130

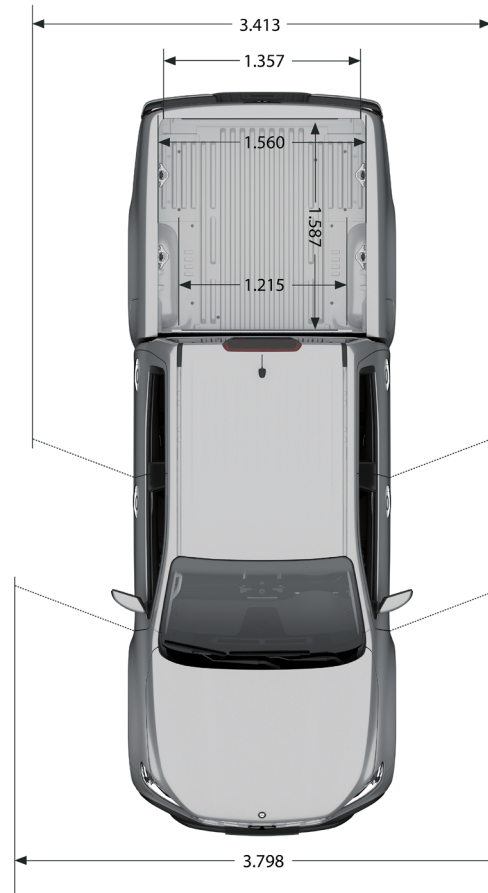
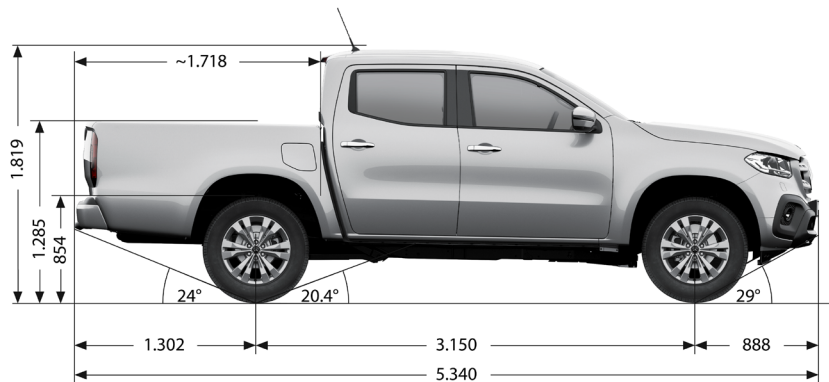
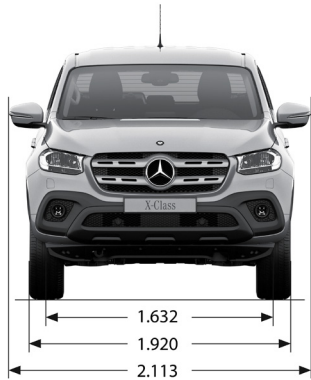
## Automatic transmission

### X 250 d 4MATIC

Number of cylinders/Arrangement	4/in-line
Displacement in cm <sup>3</sup>	2298
Rated output <sup>1</sup> in PS (kW) at rpm	190 (140)/3750
Maximum torque <sup>1</sup> in Nm at rpm	450/1500-2500
Transmission	7-speed Automatic transmission
Acceleration from 0-62 mph in s	11.8
Top speed ca. in mp/h	109
Standard tyres <sup>2</sup>	255/65 R17
<b>Fuel consumption<sup>1,3</sup> in mpg</b>	
Urban	29.4
Extra-urban	40.9
Combined	35.8
CO2-emissions <sup>1</sup> in g/km combined	207
Useable load area inside Platform [m <sup>2</sup> ]	2.48
Turning circle diameter (wall to wall) in m	13.4
Unladen weight <sup>4,5</sup> in kg	2234
Payload in kg	1066
Total weight in kg	3300
Trailer load in kg braked/unbraked	3500/750
Total weight towing mode in kg	6130

<sup>1</sup> The stated values have been determined according to the respective measuring method (according to Regulation (EC) No 715/2007, as amended). Note: The information does not refer to a single vehicle and is not part of the offer, but serves solely for purposes of comparison between the different vehicle types. CO2 emissions resulting from the production and supply of fuel or other energy sources are not taken into account when CO2 emissions are determined in accordance with Directive 1999/94 / EC. <sup>2</sup> Further tyre sizes available as an option. <sup>3</sup> Tank capacity for all engines as standard approx. 73 l. Reserve approx. 10 l. Tank content AdBlue®: approx. 17 l. <sup>4</sup> Information in accordance with Regulation (EU) 1230/2012 in the version valid at the time of printing. (With driver 75 kg, all operating fluids and 90% tank filling.) <sup>5</sup> The real consumption values are, a, depending on the vehicle weight and the selected equipment. For further information please contact your Mercedes-Benz sales representative. Original accessories (eg roof rims, hardtops, etc.) can have relevant vehicle characteristics such as weight, rolling and air resistance, and have an influence on the values of consumption and driving performance in addition to traffic and weather conditions. Further technical data can be found at [www.mercedes-benz.de](http://www.mercedes-benz.de)

# Technical data







**Terms and Conditions** Vehicle and option availability and combinations may be subject to change since this price list was issued. Model and option List Price are quoted ex-factory and exclude VAT unless otherwise stated. A standard delivery charge of £600 excluding VAT will be added to model prices quoted in this price list. All model prices include standard finish paint choice. The right is reserved to alter specification and vary prices without notice. The availability of options may depend on the chosen base vehicle and other optional equipment specified, and should be confirmed with your Mercedes-Benz Dealer prior to order placement. Mercedes-Benz Vans UK Ltd, Tongwell, Milton Keynes, MK15 8BA

**Mercedes-Benz**  
The best or nothing.

