

Catholic High School
Primary 4 Science 2019
Weighted Assessment 1

Name: _____ ()

MARKS	15
-------	----

Class: Pri 4 _____

Date: 1 March 2019

Parent's Signature: _____

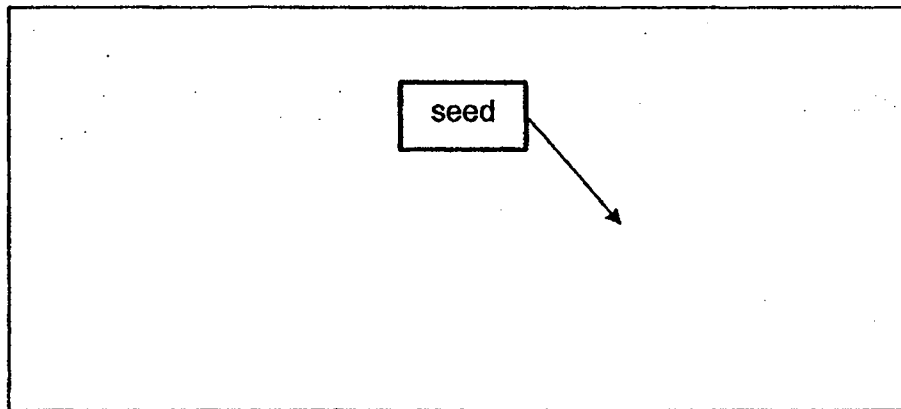
1. Completion of the Grow a Bean Plant Activity (Teacher to fill in) [3]
-

Based on the Grow a Bean Plant activity which you have completed, answer questions 2 and 3.

2. (a) Which part of the bean grew first? [1]

- (b) Give a reason why your answer in part (a) grew first. [1]

3. (a) Draw the life cycle of the bean plant in the space below. One of the stages has been drawn for you. [2]



- (b) When does the bean plant start to make its own food? [1]

SCORE	8
-------	---

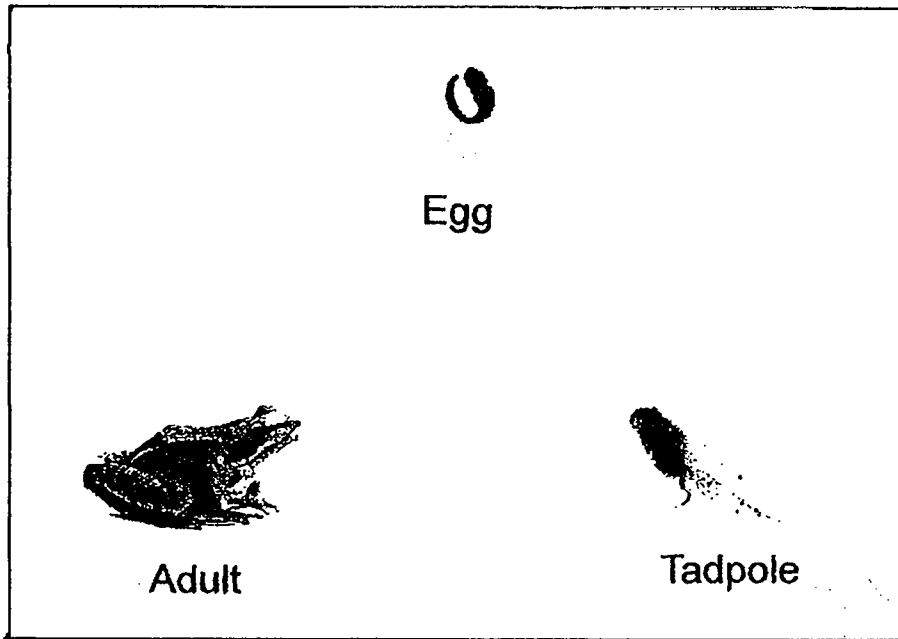
4. The table below shows some characteristics of the life cycle of a mosquito. [2]
Name the stage(s) in the space provided.

	Characteristics	Stage(s)
(i)	Moults several times as it grows.	
(ii)	Stops eating but continues to grow.	

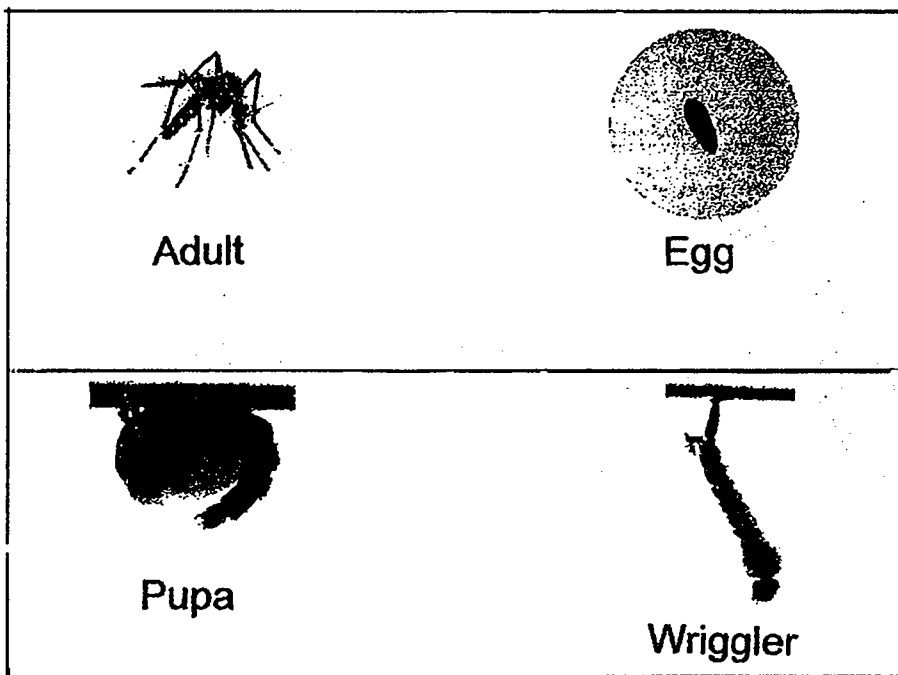
5. Why do some animals, like the frog, lay many eggs? [1]

SCORE	3
-------	---

6. (a) Cut out the given pictures of the stages in the life cycle of a frog. Using the pictures, complete the life cycle of a frog in the space below. [2]



- (b) Cut out the given pictures of the stages in the life cycle of a mosquito. Using the pictures, complete the life cycle of a mosquito in the space below. [2]



SCORE	4
-------	---

[SgTestPaper.com](#) | [P6](#) | [P5](#) | [P4](#) | [P3](#) | [P2](#) | [P1](#) |
[ENGLISH](#) | [MATHS](#) | [SCIENCE](#) | [CHINESE](#) |
[TAMIL](#) | [2019](#) | [2018](#) | [2017](#) | [2016](#) |
[PAST WORKSHEETS](#) | [SG MATH](#) |
[ENGLISH COMPOSITION](#) |
[ASSESSMENT BOOKS](#) |



Free Downloads

SgTest Papers

- [Primary 6](#)
- [Primary 5](#)
- [Primary 4](#)
- [Primary 3](#)
- [Primary 2](#)
- [Primary 1](#)

Top School Test Papers

- [Nanyang](#)
- [Raffles](#)
- [Rosyth](#)
- [Tao Nan](#)
- [CHIJ St Nicholas](#)
- [Red Swastika](#)

Free Weekly Worksheet Subscription

[Model English Composition samples for Primary School](#)

[2018 & Earlier Worksheets](#)

[One-Click Download of All 2019 P6 papers](#)

[One-Click Download of All 2019 P5 papers](#)

[One-Click Download of All 2019 P4 papers](#)

Click on the links to go to the pages

SCHOOL : CATHOLIC HIGH PRIMARY SCHOOL

LEVEL : PRIMARY 4

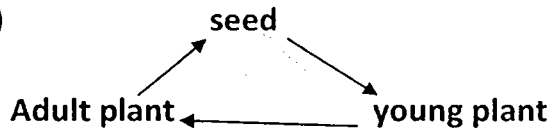
SUBJECT : SCIENCE

TERM : 2019 CA1

2)a)The roots.

b)The plant need to absorb water and mineral salts.

3)a)



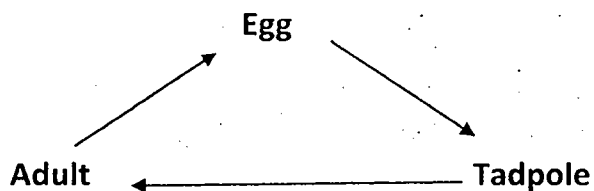
b)When the first true leaves appears.

4)i)wiggler

ii)pupa

5)To ensure some of the eggs hatch and develop into adults.

6)a)



b)

