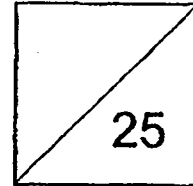


HENRY PARK PRIMARY SCHOOL
TERM REVIEW 2019
PRIMARY 4 SCIENCE



Name: _____ () Date: _____

Class: Pr 4 _____ Parent's Signature: _____

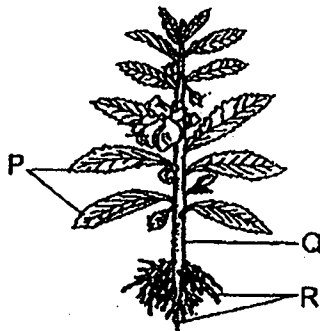
Duration: 40 minutes

Section A: Multiple-Choice Questions (14 marks)

For each question from 1 to 7, four options are given. One of them is the correct answer. Make your choice (1, 2, 3 or 4) and write the correct answer (1, 2, 3 or 4) in the table provided.

Q1	Q2	Q3	Q4	Q5	Q6	Q7

1. The diagram below shows a plant with different parts.



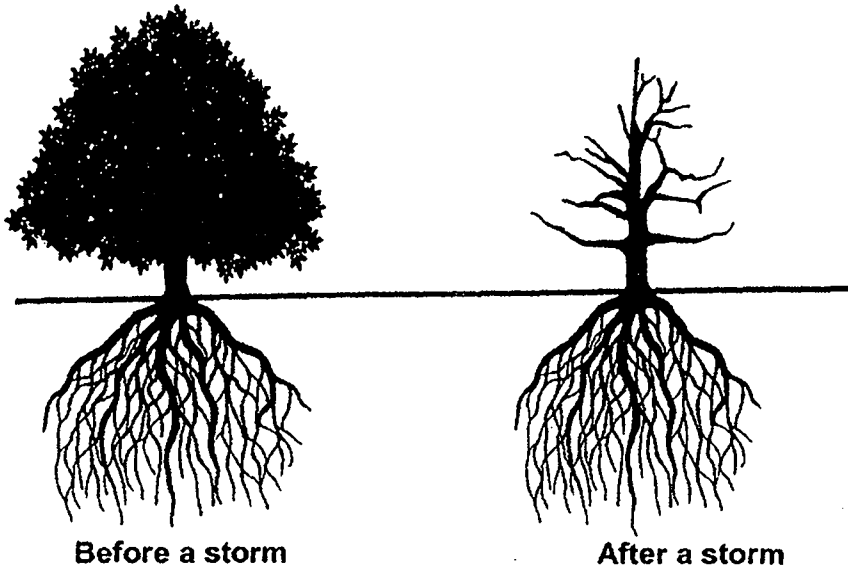
These parts can perform the following functions:

- A Reproduce new plants.
- B Make food for the plant.
- C Take in and give out gases.
- D Absorb water and minerals.

Which of the following **best** describes the function of P?

- (1) A only
- (2) A and B only
- (3) B and C only
- (4) A, C and D only

2. The diagrams below show a tree before and after a storm.



3 students explained why the tree remained standing and did not topple after the storm.

Jane: The roots held the tree firmly to the ground.

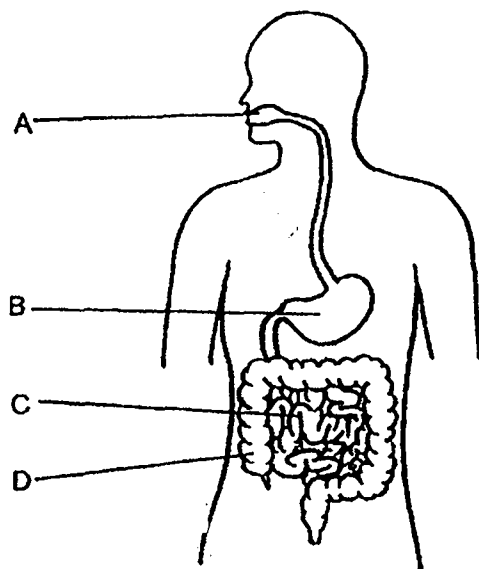
Samy: The leaves on the tree blocked the wind.

Ming: The tree had a strong and thick stem.

Which of the following student(s) has / have made the correct explanation?

- (1) Jane only
- (2) Ming only
- (3) Samy and Ming only
- (4) Jane, Samy and Ming only

3. The diagram below shows four organs in our human digestive system.

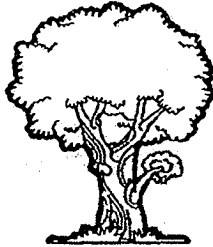


In which of the following organs is digestion completed?

- (1) A
- (2) B
- (3) C
- (4) D

4. Look at organisms X and Y below.

Organism X



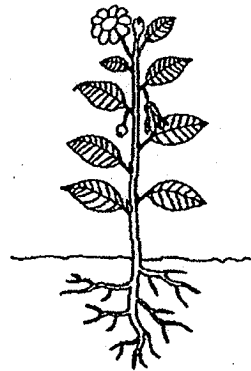
Organism Y



Which one of the following correctly shows the difference between the two organisms?

	Organism X	Organism Y
(1)	Can reproduce	Cannot reproduce
(2)	Can respond to changes	Cannot respond to changes
(3)	Unable to grow	Able to grow
(4)	Cannot move from one place to another on its own	Can move from one place to another on its own

5. Study at the two plants shown below.

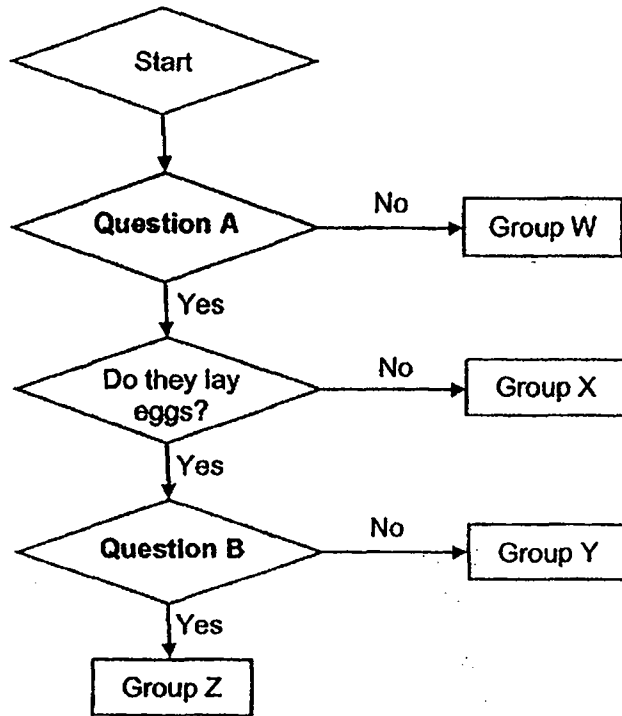


Which statement(s) about the similarity between the two plants is / are correct?

- A Both plants can bear fruits.
- B Both plants can make their own food.
- C Both plants can reproduce from seed.

- (1) A only
- (2) B only
- (3) A and B only
- (4) B and C only

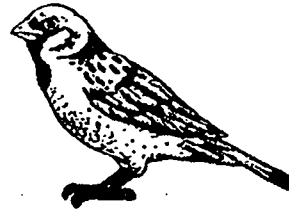
6. The flowchart below shows how some animals are grouped.



Animals G and H as shown in the diagram below are placed in Group Y.



Animal G

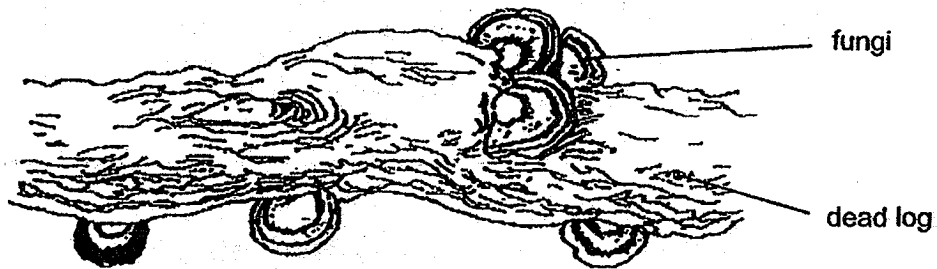


Animal H

What of the following questions A and B are correct?

	Question A	Question B
(1)	Do they have wings?	Do they produce milk for their young?
(2)	Do they produce milk for their young?	Do they have wings?
(3)	Do they have wings?	Do they have feathers?
(4)	Do they have feathers?	Do they have wings?

7. The picture below shows some fungi growing on a dead log.



The following are possible reasons why fungi grows on the dead log.

- A Provides food for fungi.
- B Helps fungi to make food.
- C Moves it from place to place.

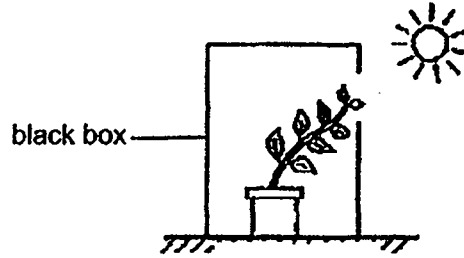
Which of the following is / are the correct reason(s) why the dead log is important to the fungi?

- (1) A only
- (2) C only
- (3) B and C only
- (4) A, B and C only

Section B: Open-Ended Questions (11 marks)

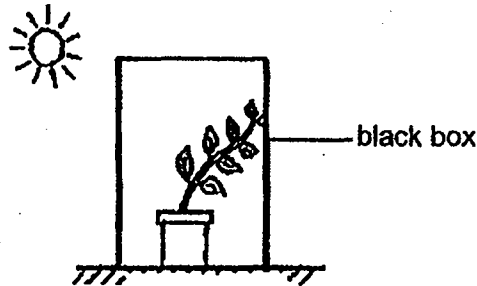
For questions 8 to 12, write your answers in the spaces provided.

8. Plant A was placed in a black box with an opening as shown below. After 2 weeks, Plant A bent towards the opening of the box.



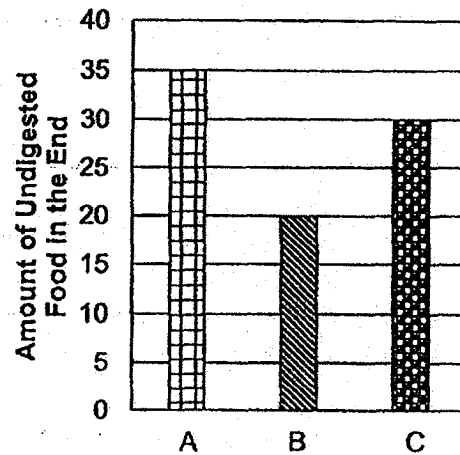
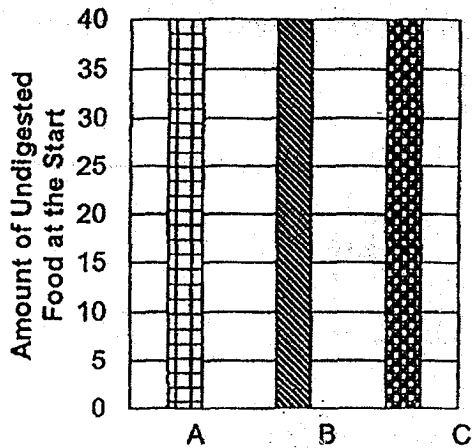
- (a) Explain why plant A bent towards the opening of the box. [1]

Ling removed plant A from the first black box. She placed it in another black box without an opening as shown below.



- (b) What would you observe about plant A after 2 weeks? [1]

9. The graphs below shows the changes in the amount of three different types of undigested food, A, B and C in our digestive system at the start and end of a period of time.



- (a) Based on the information given in the graphs, which type of undigested food was easiest to digest? [1]

- (b) Explain your answer in (a). [1]

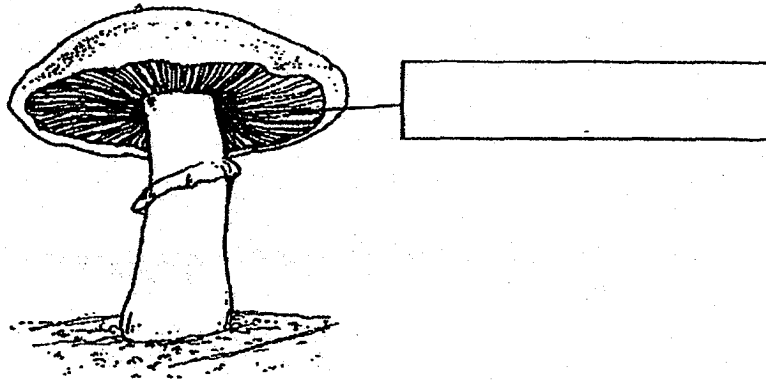
10. The table below shows the characteristics of 4 animals, A, B, C and D.
(✓) means the animal has the characteristic and (x) means it does not.

Animal	Has fins	Has hair on its body	Lay eggs	Live in water
A	x	✓	✓	x
B	✓	✓	x	x
C	✓	x	✓	✓
D	x	✓	x	✓

- (a) Based on the information given in the table, name one difference between animal A and animal D. [1]

- (b) Based on the information given in the table, give one similarity between animal B and animal C. [1]

11. The diagram below shows Organism A.

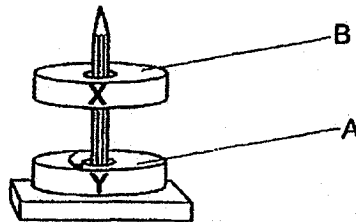


Organism A

(a) Label the part shown above. Write your answer in the box provided. [1]

(b) Why is organism A not a plant? [1]

12. The diagram below shows Magnet X and Magnet Y. They are put through a wooden pencil. Magnet X floated above Magnet Y.



- (a) A is the south pole of the Magnet Y. What is pole B of Magnet X? [1]

- (b) Claire removed Magnet X and turned it around. Pole B is now facing Pole A. Would Magnet X still float above Magnet Y as shown in the picture above? Explain why. [2]

[SgTestPaper.com](#) | [P6](#) | [P5](#) | [P4](#) | [P3](#) | [P2](#) | [P1](#) |
[ENGLISH](#) | [MATHS](#) | [SCIENCE](#) | [CHINESE](#) |
[TAMIL](#) | [2019](#) | [2018](#) | [2017](#) | [2016](#) |
[PAST WORKSHEETS](#) | [SG MATH](#) |
[ENGLISH COMPOSITION](#) |
[ASSESSMENT BOOKS](#) |



Free Downloads

SgTest Papers

- [Primary 6](#)
- [Primary 5](#)
- [Primary 4](#)
- [Primary 3](#)
- [Primary 2](#)
- [Primary 1](#)

Top School Test Papers

- [Nanyang](#)
- [Raffles](#)
- [Rosyth](#)
- [Tao Nan](#)
- [CHIJ St Nicholas](#)
- [Red Swastika](#)

Free Weekly Worksheet Subscription

[Model English Composition samples for Primary School](#)

[2018 & Earlier Worksheets](#)

[One-Click Download of All 2019 P6 papers](#)
[One-Click Download of All 2019 P5 papers](#)
[One-Click Download of All 2019 P4 papers](#)

Click on the links to go to the pages

SCHOOL : HENRY PARK PRIMARY SCHOOL

LEVEL : PRIMARY 4

SUBJECT : SCIENCE

TERM : 2019 CA1

SECTION A

Q 1	Q2	Q3	Q4	Q5	Q6	Q7
3	1	3	4	2	1	1

SECTION B

Q8)	a)The plant bends to get receive obtain sunlight / light to make food. b)Plant A would die. There is no sunlight in the black box so the plant cannot make food and it will starve to death.
Q9)	a)Type food B. b)Among the three types of food, type food B digested the fastest.
Q10)	a)Animal A lays eggs but animal D does not lay eggs. b)Both animals have fins.
Q11)	a)spores b)Organism A is not a plant because it cannot make its own food but plants can make its own food.
Q12)	a)The pole B of the magnet is north. b)It will not be still floating above Magnet Y as shown in the picture because north and south pole with attract instead of repel.

